

Inspection Photos

12/18/2017

Operator: OILFIELD SALVAGE & SERVICE CO -
65550

Location ID: 453292

Inspection Doc. Number: 682502970
Adams County, CO

Aaron Trujillo
NE Reclamation Specialist
COGCC

Inspection Photos
Operator: OILFIELD SALVAGE & SERVICE CO - 65550
Location ID: 453292



Photo 1: Photo taken from the northwest end of the fenced reclamation area (on slope), facing east. Photo shows straw wattles BMPs have not been installed in accordance to good engineering practices. Previous inspections required operator to perform reclamation and ensure erosion controls are implemented to stabilize the seeded soil. Photo shows the disturbance area appears to have been seeded (striations in soil suggest a no-till seed drill was used), however no erosion/stabilization controls appear to have been implemented to stabilize the seeded soil per the corrective action. This has allowed stormwater degradation to continue on the location.



Photo 2: Photo taken from the northwest end of the fenced reclamation area (on slope), facing south. SEE COMMENTS UNDER PHOTO 1



Photo 3: Photo taken from within the disturbance area on the slope, facing northeast. Photo shows straw wattles BMPs have not been installed in accordance to good engineering practices. Photo also shows the disturbance area appears to have been seeded (striations in soil suggest a no-till seed drill was used), however no erosion controls were implemented to stabilize the seeded soil per the corrective action.



Photo 4: Photo taken from within the disturbance area on the slope, facing northeast. Photo shows that no erosion controls were implemented to stabilize the seeded soil, allowing erosion degradation to continue (yellow arrow). Photo also shows straw wattles BMPs have not been installed in accordance to good engineering practices, and stormwater has cut underneath the BMP (red arrow).



Photo 5: Photo shows straw wattles BMPs have not been installed in accordance to good engineering practices. Straw wattles are a stormwater ponding BMP that is required to be trenched below grade and backfilled in order to work in proper functioning condition.



Photo 6: Photo taken from within the disturbance area on the slope, facing south. Photo shows that no erosion controls were implemented to stabilize the seeded soil, allowing erosion degradation to continue (yellow arrow).

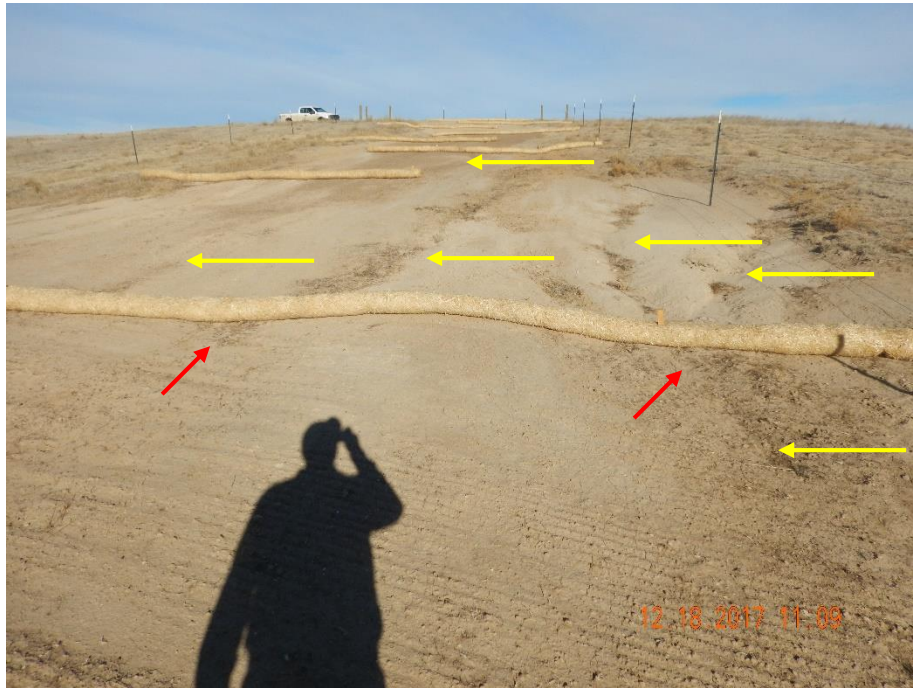


Photo 7: Photo taken from the southern portion of the fenced disturbance, facing north. Photo shows that no erosion controls were implemented to stabilize the seeded soil, allowing erosion degradation to continue (yellow arrow). Photo also shows straw wattles BMPs have not been installed in accordance to good engineering practices, and stormwater has cut underneath the BMP (red arrow).



Photo 8: Photo taken from within the disturbance area on the slope, facing north. Photo shows that no erosion controls were implemented to stabilize the seeded soil, allowing erosion degradation to continue (yellow arrow). Photo also shows straw wattles BMPs have not been installed in accordance to good engineering practices, and stormwater has cut underneath the BMP (red arrow).