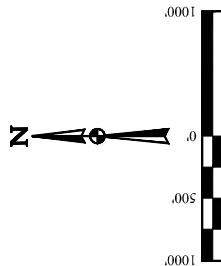


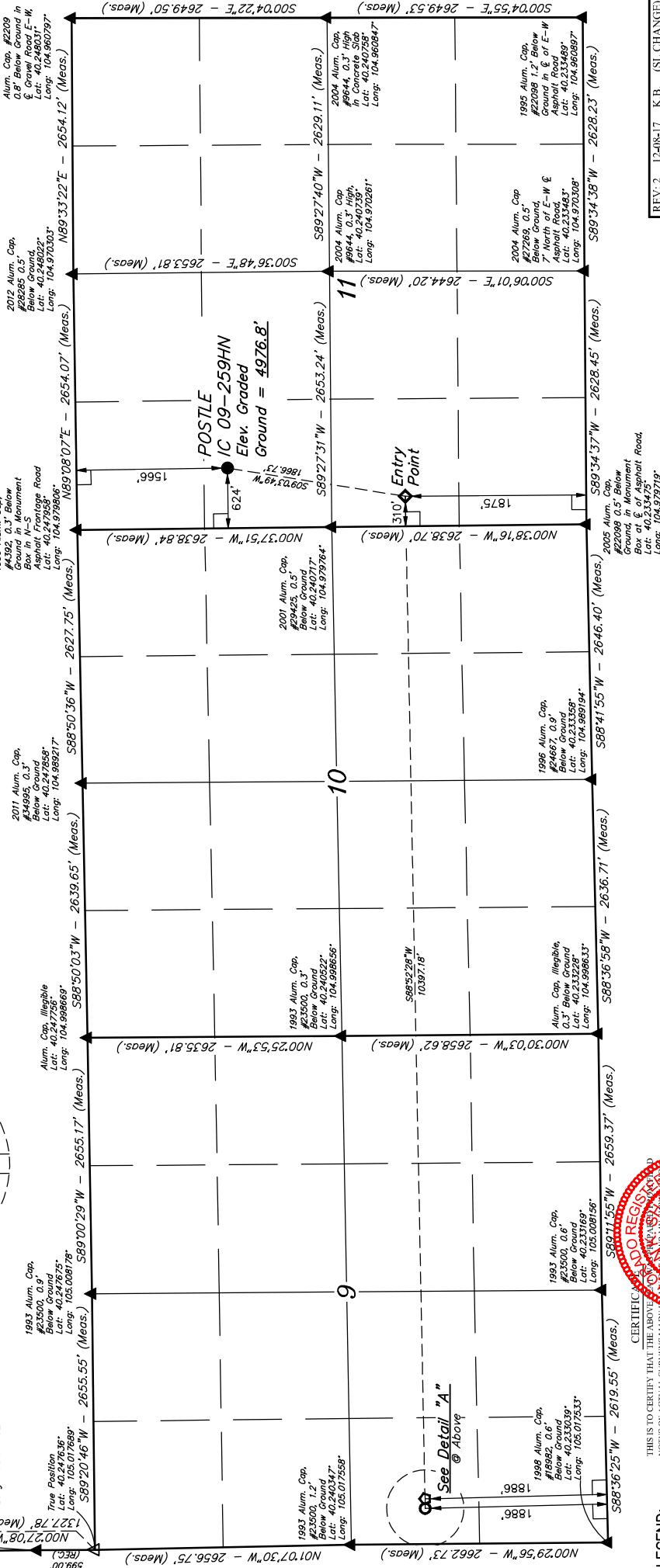
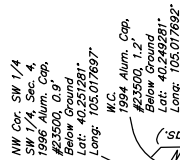
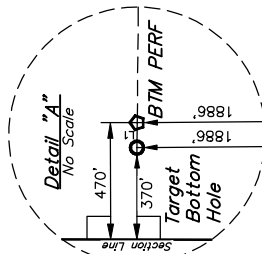
GREAT WESTERN OPERATING COMPANY

POSTLE IC 09-259HN
SW 1/4 NW 1/4, SECTION 11, T3N, R68W, 6th P.M.
WELD COUNTY, COLORADO

BASIS OF BEARINGS
BASIS OF BEARINGS IS A G.P.S. OBSERVATION
BASIS OF ELEVATION
USGS COOPERATIVE BASE NETWORK CONTROL STATION,
DESIGNATION "VERMILYEA" NGDS DATA SHEET LISTS THE
NAVD 88 ELEVATION AS BEING 5026 FEET



LINE TABLE		
LINE	DIRECTION	LENGTH
L1	S88°52'28"W	100.01'



REGISTERED LAND SURVEYOR
REGISTRATION NO. 28285
STATE OF TEXAS
JAN 17 2017

THIS IS TO CERTIFY THAT THE
NOTES OF ACTUAL SURVEY
AND THAT THE SAME ARE
KNOWLEDGE AND BELIEF.

LEGEND:

- = 90° SYMBOL
- = PROPOSED WELLHEAD.
- = TARGET BOTTOM HOLE.
- ◇ = ENTRY POINT.
- ◆ = BTM PERF.
- ▲ = SECTION CORNERS LOCATED. (NAD 83)
- △ = SECTION CORNERS RE-ESTABLISHED.
(Not Set on Ground.) (NAD 83)

REV: 2 12-08-17 K.B. (SL CHANGE)

PDOP = 1.3



JINTAH
ENGINEERING & LAND SURVEYING

SURVEYED BY	CHAD M
DRAWN BY	1

WELL LO

NAD 83 (SURFACE LOCATION)		NAD 83 (ENTRY POINT)		NAD 83 (BTM PERF)		NAD 83 (TARGET BOTTOM HOLE)	
LATITUDE = 40° 43' 27.3" N	(104.23675)	LATITUDE = 40° 41' 19.04" N	(104.23862)	LATITUDE = 40° 41' 7.66" N	(104.23839)	LATITUDE = 40° 40' 43.8236" N	(104.238236)
LONGITUDE = 104° 38' 39.16" E	(104.977545)	LONGITUDE = 104° 38' 43.11" E	(104.97862)	LONGITUDE = 105° 00' 57.12" E	(105.015867)	LONGITUDE = 105° 00' 58.41" E	(105.016225)
NAD 27 (SURFACE LOCATION)		NAD 27 (ENTRY POINT)		NAD 27 (BTM PERF)		NAD 27 (TARGET BOTTOM HOLE)	
LATITUDE = 40° 43' 27.29" N	(104.23691)	LATITUDE = 40° 41' 19.10" N	(104.238639)	LATITUDE = 40° 41' 17.72" N	(104.238256)	LATITUDE = 40° 41' 17.70" N	(104.238250)
LONGITUDE = 104° 38' 37.24" E	(104.977011)	LONGITUDE = 104° 38' 41.19" E	(104.978108)	LONGITUDE = 105° 00' 55.20" E	(105.015333)	LONGITUDE = 105° 00' 56.49" E	(105.015692)