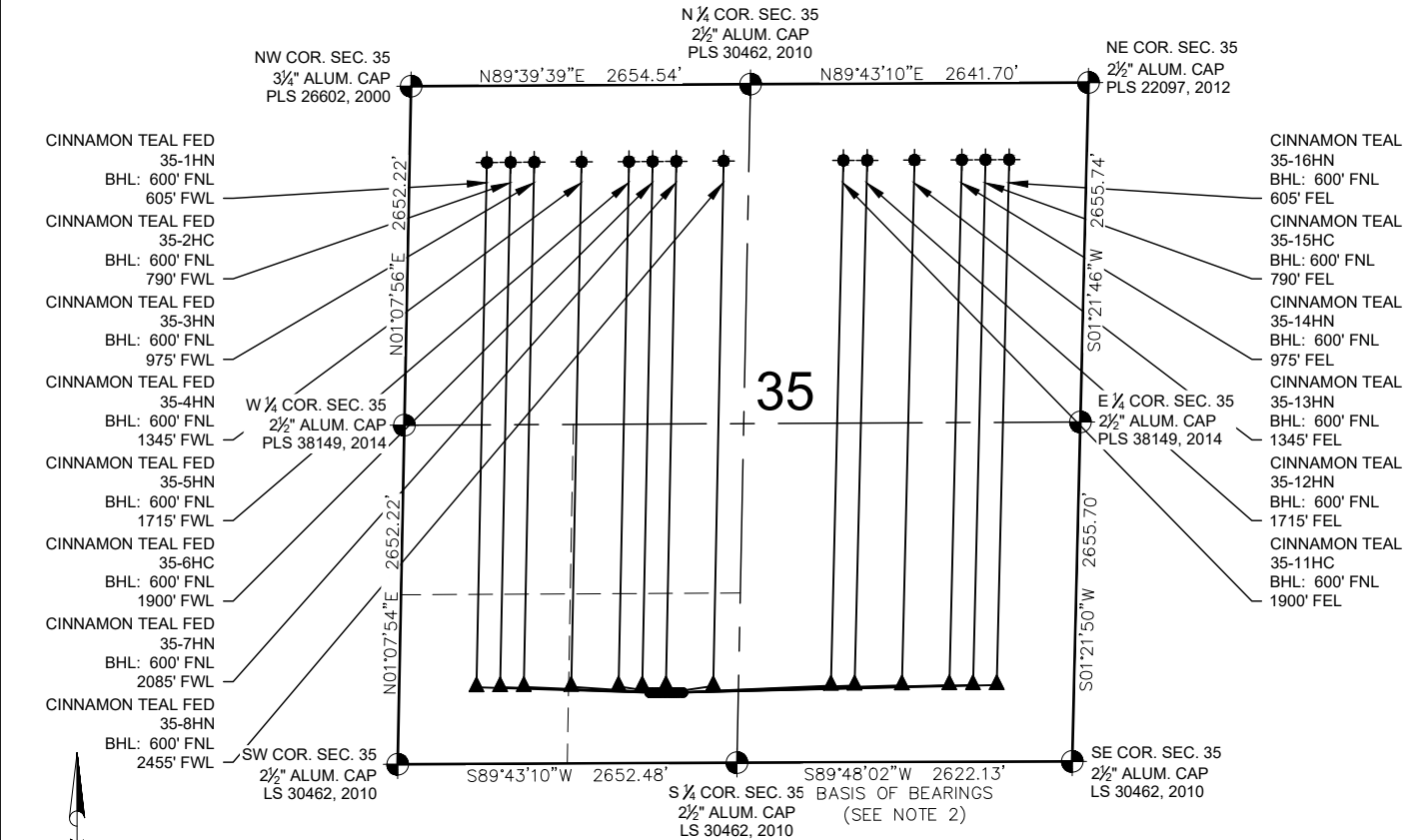


# CINNAMON TEAL PAD MULTI-WELL PLAN



## NOTES:

- CINNAMON TEAL FED 35-1HN TO BE AT 550' FSL & 1960' FWL.  
BOTTOM HOLE AT 600' FNL & 605' FWL, SEC. 35, T8N, R60W.
- CINNAMON TEAL FED 35-2HC TO BE AT 550' FSL & 1980' FWL.  
BOTTOM HOLE AT 600' FNL & 790' FWL, SEC. 35, T8N, R60W.
- CINNAMON TEAL FED 35-3HN TO BE AT 550' FSL & 2000' FWL.  
BOTTOM HOLE AT 600' FNL & 975' FWL, SEC. 35, T8N, R60W.
- CINNAMON TEAL FED 35-4HN TO BE AT 550' FSL & 2020' FWL.  
BOTTOM HOLE AT 600' FNL & 1345' FWL, SEC. 35, T8N, R60W.
- CINNAMON TEAL FED 35-5HN TO BE AT 550' FSL & 2040' FWL.  
BOTTOM HOLE AT 600' FNL & 1715' FWL, SEC. 35, T8N, R60W.
- CINNAMON TEAL FED 35-6HC TO BE AT 550' FSL & 2060' FWL.  
BOTTOM HOLE AT 600' FNL & 1900' FWL, SEC. 35, T8N, R60W.
- CINNAMON TEAL FED 35-7HN TO BE AT 550' FSL & 2080' FWL.  
BOTTOM HOLE AT 600' FNL & 2085' FWL, SEC. 35, T8N, R60W.
- CINNAMON TEAL FED 35-8HN TO BE AT 550' FSL & 2100' FWL.  
BOTTOM HOLE AT 600' FNL & 2455' FWL, SEC. 35, T8N, R60W.
- CINNAMON TEAL 35-11HC TO BE AT 550' FSL & 2120' FWL.  
BOTTOM HOLE AT 600' FNL & 1900' FWL, SEC. 35, T8N, R60W.
- CINNAMON TEAL 35-12HN TO BE AT 550' FSL & 2140' FWL.  
BOTTOM HOLE AT 600' FNL & 1715' FWL, SEC. 35, T8N, R60W.
- CINNAMON TEAL 35-13HN TO BE AT 550' FSL & 2160' FWL.  
BOTTOM HOLE AT 600' FNL & 1345' FWL, SEC. 35, T8N, R60W.
- CINNAMON TEAL 35-14HN TO BE AT 550' FSL & 2180' FWL.  
BOTTOM HOLE AT 600' FNL & 975' FWL, SEC. 35, T8N, R60W.
- CINNAMON TEAL 35-15HC TO BE AT 550' FSL & 2199' FWL.  
BOTTOM HOLE AT 600' FNL & 790' FWL, SEC. 35, T8N, R60W.
- CINNAMON TEAL 35-16HN TO BE AT 550' FSL & 2219' FWL.  
BOTTOM HOLE AT 600' FNL & 605' FWL, SEC. 35, T8N, R60W.

## LEGEND

- = EXISTING MONUMENT
- = CALCULATED POSITION
- = PROPOSED WELL
- ◆ = EXISTING WELL
- ▲ = BOTTOM HOLE
- ▲ = LANDING POINT
- BHL = BOTTOM HOLE LOCATION

## NOTES:

1. THIS FIELD SURVEY CONFORMS TO THE MINIMUM STANDARDS SET BY THE C.O.G.C.C., RULE NO. 215
2. BEARINGS ARE BASED ON THE ASSUMPTION THAT THE SOUTH LINE OF THE SOUTHEAST QUARTER OF SECTION 35, BEARS S89°48'02"W BETWEEN THE MONUMENTS SHOWN HEREON.
3. ALL DISTANCES AND BEARINGS SHOWN HEREON ARE GROUND VALUES AS GPS MEASURED IN THE FIELD, WITH TIES TO WELLS MEASURED PERPENDICULAR TO SECTION LINES. THIS LOW DISTORTION PROJECTION (LDP) IS BASED ON THE NORTH AMERICAN DATUM OF 1983, U.S. SURVEY FOOT WITH A LATITUDE ORIGIN OF 40.655085°N, A CENTRAL MERIDIAN LONGITUDE OF 104.086861°W, AND A SCALE FACTOR ON THE CENTRAL MERIDIAN OF 1.000232 (EXACT). THE LDP BASIS OF BEARINGS IS GEODETIC NORTH.
4. FIELD VERIFICATION OF MONUMENTS COMPLETED WITHIN 1 YEAR OF SIGNATURE DATE.