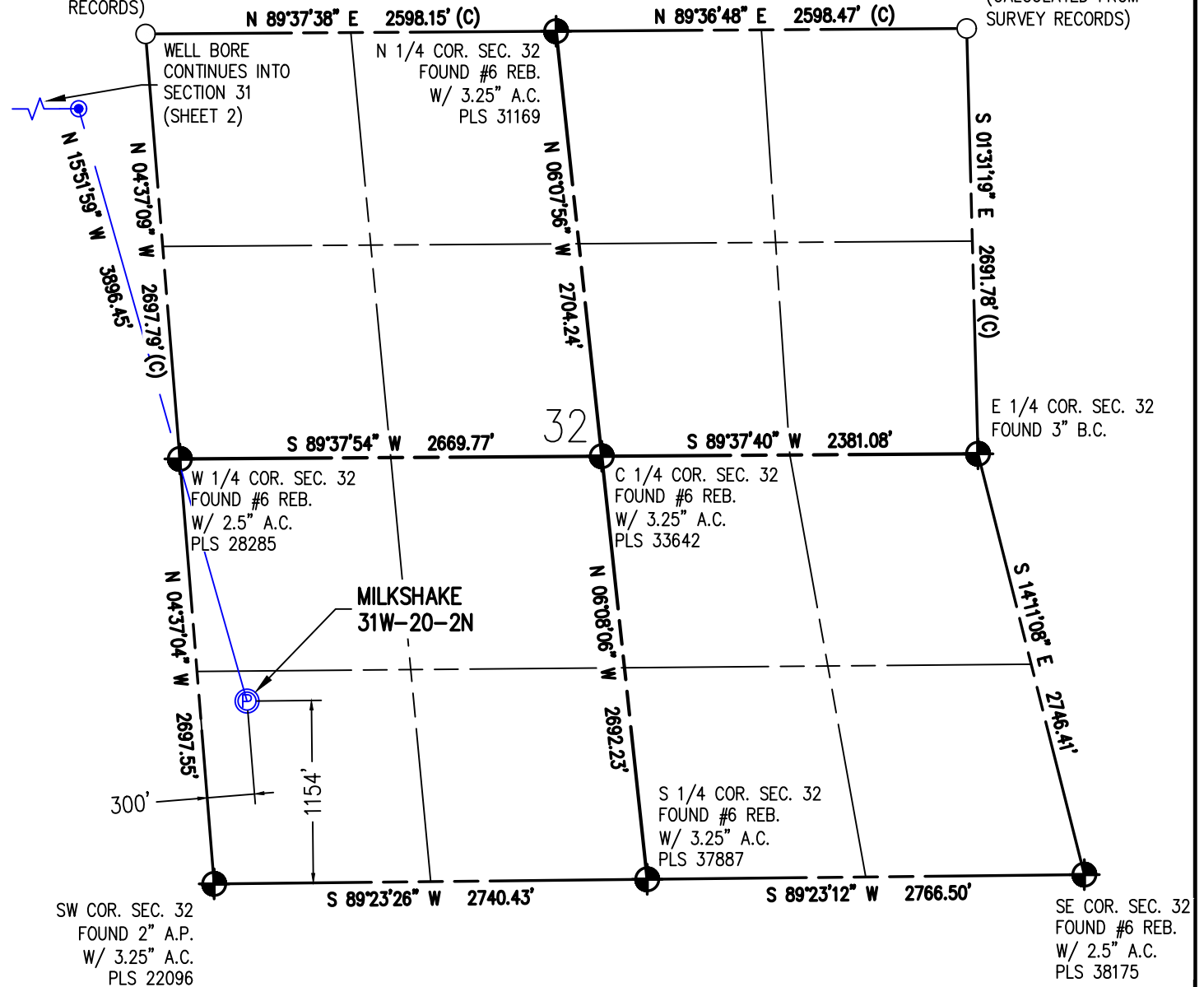


WELL CERTIFICATION EXHIBIT MILKSHAKE 31W-20-2N

SW 1/4 SW 1/4 SEC. 32, T6N, R67W, 6TH P.M.

NW COR. SEC. 32
(CALCULATED
FROM SURVEY
RECORDS)

NE COR. SEC. 32
(CALCULATED FROM
SURVEY RECORDS)



I HEREBY CERTIFY THAT THIS WELL LOCATION CERTIFICATE WAS PREPARED BY ME, OR UNDER MY DIRECT SUPERVISION, THAT THE FIELD WORK WAS COMPLETED ON 3/2/2017, THAT IT IS NOT A LAND SURVEY PLAT OR AN IMPROVEMENT SURVEY PLAT, AND THAT IT IS NOT TO BE RELIED UPON FOR ESTABLISHMENT OF FENCE, BUILDING OR OTHER FUTURE IMPROVEMENT LINES.

AARON A. DEMO
Professional Land Surveyor Registration No. 38285
State of Colorado
FOR AND ON BEHALF OF BASELINE ENGINEERING CORP.

N

0 1000'

SURFACE LOCATION
SEC. 32, T6N, R67W
GROUND ELEVATION = 4948.0'
PDOP = 1.4
LATITUDE = 40.439135°
LONGITUDE = -104.924296°
1154' FSL, 300' FWL
ENTRY POINT LOCATION
SEC. 31, T6N, R67W
LATITUDE = 40.449439°
LONGITUDE = -104.928035°
459' FNL, 460' FEL
BOTTOM HOLE LOCATION
SEC. 36, T6N, R68W
LATITUDE = 40.449466°
LONGITUDE = -104.961755°
348' FNL, 460' FWL

NOTES:

1. INDICATES SECTION CORNER
2. INDICATES CALCULATED CORNER
3. (C) INDICATES CALCULATED DIMENSION
4. ELEVATION BASED ON NAVD88 (GEOID12B)
5. BEARINGS DERIVED FROM COLORADO COORDINATE SYSTEM OF 1983 NORTH ZONE.
6. OPERATOR: JEFF VAN HORN
7. IMPROVEMENTS: SEE LOCATION DRAWING FOR ALL VISIBLE IMPROVEMENTS WITHIN 500' OF DISTURBED AREA.
8. WELL FOOTAGES ARE MEASURED AT RIGHT ANGLES TO THE SECTION LINES.

NEAREST CULTURAL ITEMS:

BUILDING: 836' S
BUILDING UNIT: 1308' S
HIGH OCCUPANCY BUILDING UNIT: 5280'+
DESIGNATED OUTSIDE ACTIVITY AREA: 5280'+
PUBLIC ROAD: WELD COUNTY ROAD 28 1122' S
ABOVE GROUND UTILITY: 1253' S
RAILROAD: 5280'+
PROPERTY LINE: 22' N
SURFACE USE: GRASSLAND
NEAREST EXISTING WELL: 479' N



DRAWN BY	RPM	CHECKED BY	AAD
INITIAL SUBMITTAL	8/18/2017		
REVISED	10/27/2017		
DRAWING SIZE	8.5" X 11"		
JOB NO.	EXT06N67W32-01		
SHEET	1 OF 3		



WELL CERTIFICATION EXHIBIT MILKSHAKE 31W-20-2N

SW 1/4 SW 1/4 SEC. 32, T6N, R67W, 6TH P.M.

NW COR. SEC. 31
FOUND #6 REB.
W/ 2.5" A.C.
PLS 31169

N 1/4 COR. SEC. 31
FOUND #6 REB.
W/ 3.25" A.C.
PLS 22098

NE COR. SEC. 31
(CALCULATED
FROM SURVEY
RECORDS)

WELL BORE
CONTINUES INTO
SECTION 36
(SHEET 3)

ENTRY POINT

WELL BORE
CONTINUES INTO
SECTION 32
(SHEET 1)

W 1/4 COR. SEC. 31
FOUND #6 REB.
W/ 2.5" A.C.
PLS 31169

C 1/4 COR. SEC. 31
(CALCULATED FROM
SURVEY RECORDS)

E 1/4 COR. SEC. 31
FOUND #6 REB.
W/ 2.5" A.C.
PLS 28285

SW COR. SEC. 31
FOUND #6 REB.
NO CAP

S 1/4 COR. SEC. 31
FOUND #6 REB.
W/ 3.25" A.C.
PLS 22098

SE COR. SEC. 31
FOUND 2" A.P.
W/ 3.25" A.C.
PLS 22096

I HEREBY CERTIFY THAT THIS WELL LOCATION CERTIFICATE WAS PREPARED BY ME, OR UNDER MY DIRECT SUPERVISION, THAT THE FIELD WORK WAS COMPLETED ON 3/2/2017, THAT IT IS NOT A LAND SURVEY PLAT OR AN IMPROVEMENT SURVEY PLAT, AND THAT IT IS NOT TO BE RELED UPON FOR ESTABLISHMENT OF FENCE, BUILDING OR OTHER FUTURE IMPROVEMENT LINES.



AARON A. DEMO
Professional Land Surveyor Registration No. 38285
State of Colorado
FOR AND ON BEHALF OF BASELINE ENGINEERING CORP.

N

0 1000'
Scale 1" = 1000' ft

SURFACE LOCATION
SEC. 32, T6N, R67W
GROUND ELEVATION = 4948.0'
PDOP = 1.4
LATITUDE = 40.439135°
LONGITUDE = -104.924296°
1154' FSL, 300' FWL
ENTRY POINT LOCATION
SEC. 31, T6N, R67W
LATITUDE = 40.449439°
LONGITUDE = -104.928035°
459' FNL, 460' FEL
BOTTOM HOLE LOCATION
SEC. 36, T6N, R68W
LATITUDE = 40.449466°
LONGITUDE = -104.961755°
348' FNL, 460' FWL

NOTES:

1.  INDICATES SECTION CORNER
2.  INDICATES CALCULATED CORNER
3. (C) INDICATES CALCULATED DIMENSION
4. ELEVATION BASED ON NAVD88 (GEOID12B)
5. BEARINGS DERIVED FROM COLORADO COORDINATE SYSTEM OF 1983 NORTH ZONE.
6. OPERATOR: JEFF VAN HORN
7. IMPROVEMENTS: SEE LOCATION DRAWING FOR ALL VISIBLE IMPROVEMENTS WITHIN 500' OF DISTURBED AREA.
8. WELL FOOTAGES ARE MEASURED AT RIGHT ANGLES TO THE SECTION LINES.

NEAREST CULTURAL ITEMS:

BUILDING: 836' S
BUILDING UNIT: 1308' S
HIGH OCCUPANCY BUILDING UNIT: 5280'+
DESIGNATED OUTSIDE ACTIVITY AREA: 5280'+
PUBLIC ROAD: WELD COUNTY ROAD 28 1122' S
ABOVE GROUND UTILITY: 1253' S
RAILROAD: 5280'+
PROPERTY LINE: 22' N
SURFACE USE: GRASSLAND,
NEAREST EXISTING WELL: 479' N



DRAWN BY	CHECKED BY
RPM	AAD
INITIAL SUBMITTAL	8/18/2017
REVISED	10/27/2017
DRAWING SIZE	8.5" X 11"
JOB NO.	EXT06N67W32-01
SHEET	2 OF 3

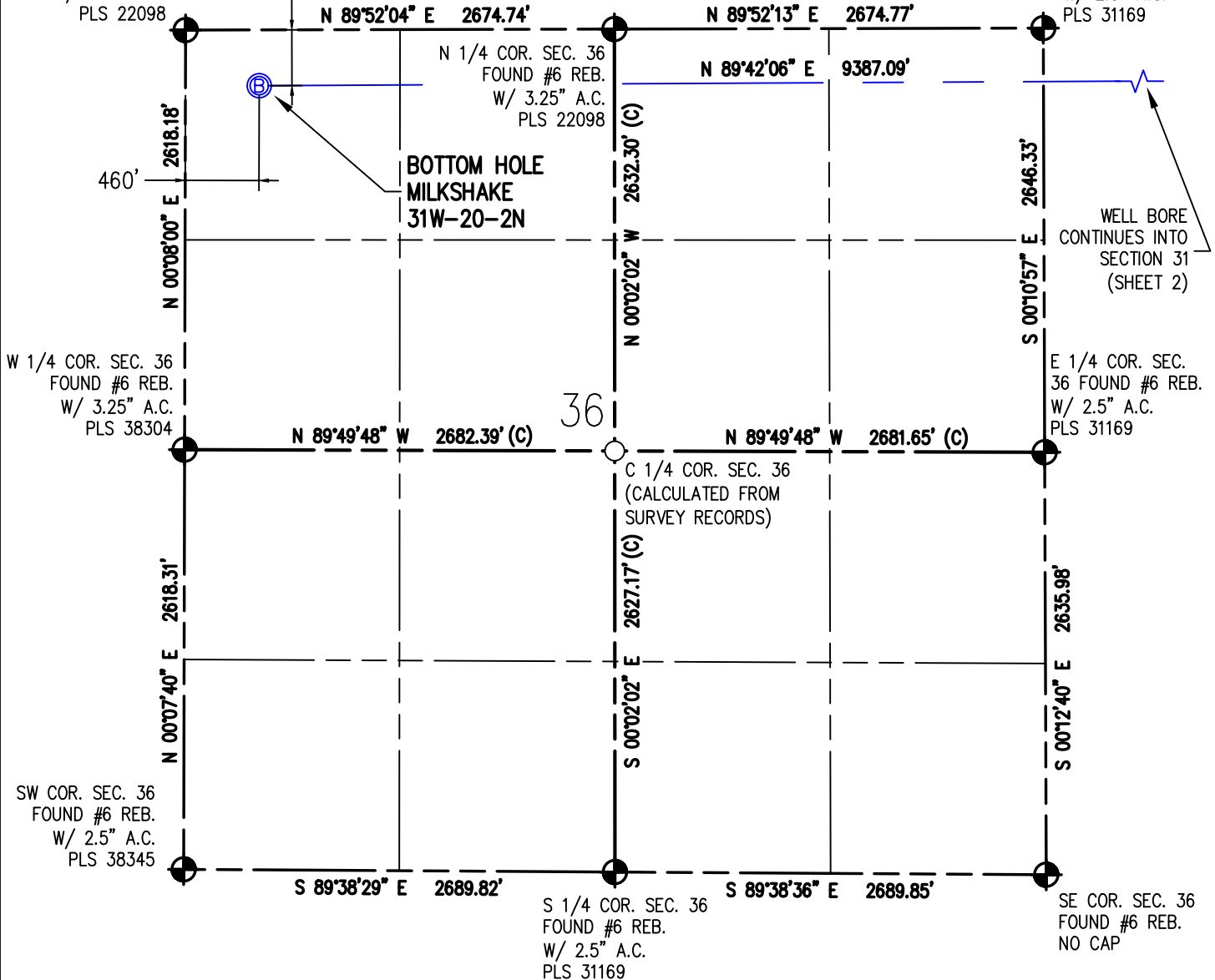


WELL CERTIFICATION EXHIBIT
MILKSHAKE 31W-20-2N

NW COR. SEC. 36
FOUND #6 REB.
W/ 3.25" A.C.
PLS 22098

SW 1/4 SW 1/4 SEC. 32, T6N, R67W, 6TH P.M.

NE COR. SEC. 36
FOUND #6 REB.
W/ 2.5" A.C.
PLS 31169



SW COR. SEC. 36
FOUND #6 REB.
W/ 2.5" A.C.
PLS 38345

I HEREBY CERTIFY THAT THIS WELL LOCATION CERTIFICATE WAS PREPARED BY ME, OR UNDER MY DIRECT SUPERVISION, THAT THE FIELD WORK WAS COMPLETED ON 3/2/2017, THAT IT IS NOT A LAND SURVEY PLAT OR AN IMPROVEMENT SURVEY PLAT, AND THAT IT IS NOT TO BE RELIED UPON FOR ESTABLISHMENT OF FENCE, BUILDING OR OTHER FUTURE IMPROVEMENT LINES.

AARON A. DEMO
Professional Land Surveyor Registration No. 38285
State of Colorado
FOR AND ON BEHALF OF BASELINE ENGINEERING CORP.

S 1/4 COR. SEC. 36
FOUND #6 REB.
W/ 2.5" A.C.
PLS 31169

SE COR. SEC. 36
FOUND #6 REB.
NO CAP

SURFACE LOCATION
SEC. 32, T6N, R67W
GROUND ELEVATION = 4948.0'
PDOP = 1.4
LATITUDE = 40.439135°
LONGITUDE = -104.924296°
1154' FSL, 300' FWL
ENTRY POINT LOCATION
SEC. 31, T6N, R67W
LATITUDE = 40.449439°
LONGITUDE = -104.928035°
459' FNL, 460' FEL
BOTTOM HOLE LOCATION
SEC. 36, T6N, R68W
LATITUDE = 40.449466°
LONGITUDE = -104.961755°
348' FNL, 460' FWL

NOTES:

1. INDICATES SECTION CORNER
2. INDICATES CALCULATED CORNER
3. (C) INDICATES CALCULATED DIMENSION
4. ELEVATION BASED ON NAVD88 (GEOID12B)
5. BEARINGS DERIVED FROM COLORADO COORDINATE SYSTEM OF 1983 NORTH ZONE.
6. OPERATOR: JEFF VAN HORN
7. IMPROVEMENTS: SEE LOCATION DRAWING FOR ALL VISIBLE IMPROVEMENTS WITHIN 500' OF DISTURBED AREA.
8. WELL FOOTAGES ARE MEASURED AT RIGHT ANGLES TO THE SECTION LINES.

NEAREST CULTURAL ITEMS:

BUILDING: 836' S
BUILDING UNIT: 1308' S
HIGH OCCUPANCY BUILDING UNIT: 5280'+
DESIGNATED OUTSIDE ACTIVITY AREA: 5280'+
PUBLIC ROAD: WELD COUNTY ROAD 28 1122' S
ABOVE GROUND UTILITY: 1253' S
RAILROAD: 5280'+
PROPERTY LINE: 22' N
SURFACE USE: GRASSLAND
NEAREST EXISTING WELL: 479' N

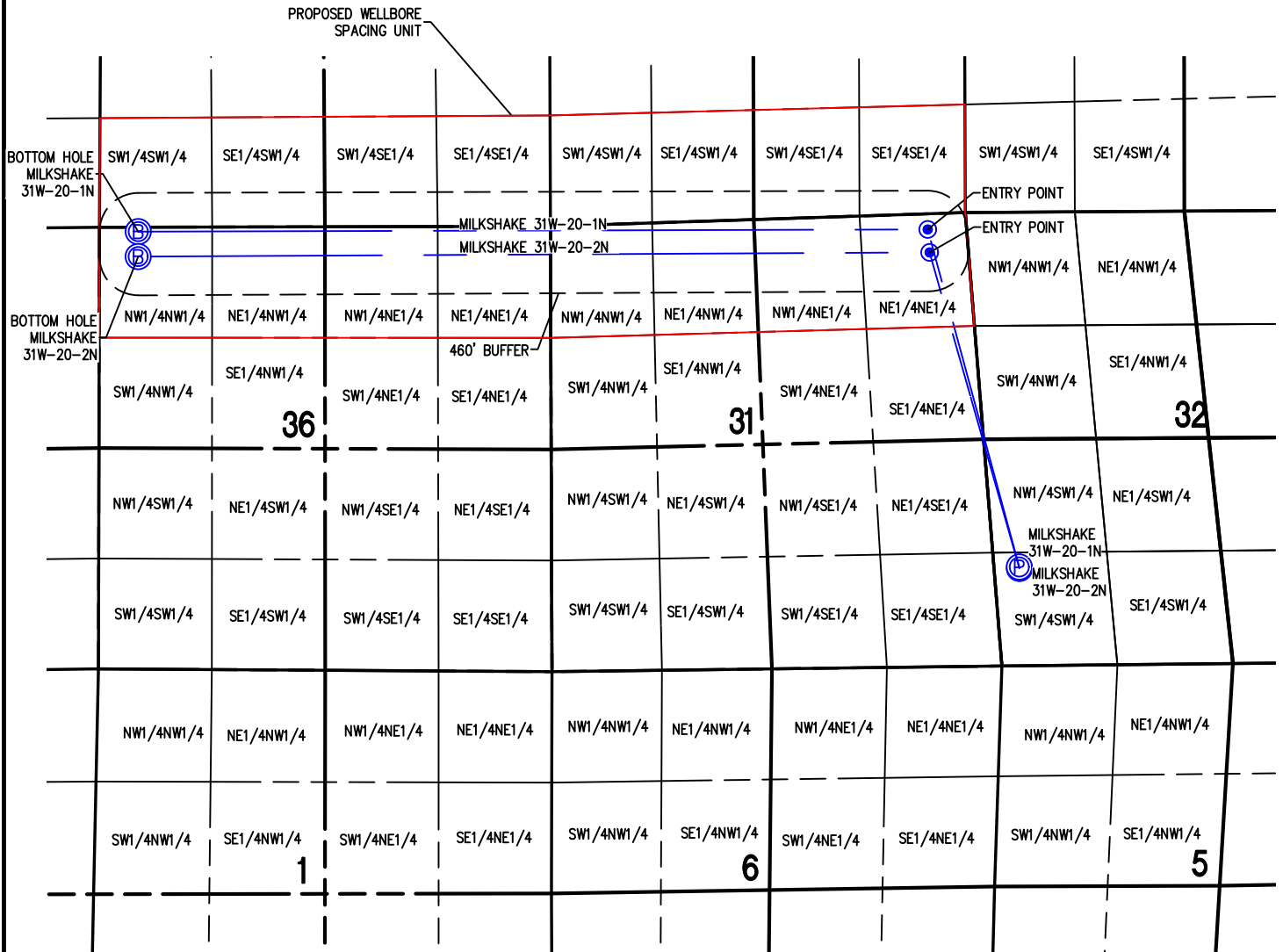


DRAWN BY	RPM
CHECKED BY	AAD
INITIAL SUBMITTAL	8/18/2017
REVISED	10/27/2017
DRAWING SIZE	8.5" X 11"
JOB NO.	EXT06N67W32-01
SHEET	3 of 3

BASELINE
Engineering - Planning - Surveying
4007 S. LINCOLN AVENUE, SUITE 405 • LOVELAND, COLORADO 80537
P: 970.353.7800 • F: 970.353.7801 • www.baselinecorp.com

WELL CERTIFICATION EXHIBIT WELL BORE SPACING UNIT

SW 1/4 SW 1/4 SEC. 32, T6N, R67W, 6TH P.M.



MILKSHAKE 31W-20-1N

SURFACE LOCATION

SEC. 32, T6N, R67W
LATITUDE = 40.439184°
LONGITUDE = -104.924301°
1172' FSL, 300' FWL

ENTRY POINT LOCATION

SEC. 31, T6N, R67W
LATITUDE = 40.450188°
LONGITUDE = -104.928108°
186' FNL, 460' FEL

BOTTOM HOLE LOCATION

SEC. 36, T6N, R68W
LATITUDE = 40.450277°
LONGITUDE = -104.961747°
53' FNL, 460' FWL

MILKSHAKE 31W-20-2N

SURFACE LOCATION

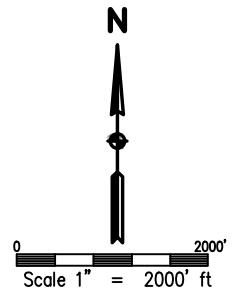
SEC. 32, T6N, R67W
LATITUDE = 40.439135°
LONGITUDE = -104.924296°
1154' FSL, 300' FWL

ENTRY POINT LOCATION

SEC. 31, T6N, R67W
LATITUDE = 40.449439°
LONGITUDE = -104.928035°
459' FNL, 460' FEL

BOTTOM HOLE LOCATION

SEC. 36, T6N, R68W
LATITUDE = 40.449466°
LONGITUDE = -104.961755°
348' FNL, 460' FWL



NOTES:

- THIS SKETCH DOES NOT REPRESENT A BOUNDARY SURVEY
- THE DATUM FOR THE LATITUDES AND LONGITUDES ON THIS SKETCH IS NAD83



DRAWN BY	RPM	CHECKED BY	AAD
INITIAL SUBMITTAL	8/18/2017		
REVISED	10/27/2017		
DRAWING SIZE	8.5" X 11"		
JOB NO.	EXT06N67W32-01		
SHEET	1 OF 2		

BASELINE
Engineering - Planning - Surveying

4007 S. LINCOLN AVENUE, SUITE 405 - LOVELAND, COLORADO 80537
P: 970.353.7800 - F: 970.353.7801 - www.baselinecorp.com