

# **BISON OIL & GAS II, LLC**

**WELD COUNTY, COLORADO (NAD 83)**

**NE NW SEC. 6 T8N R60W 6th P.M.**

**HUNT FED 8-60 6A-31-30-7**

**ORIGINAL WELLBORE**

**28 November, 2017**

**Plan: PROPOSAL #1**

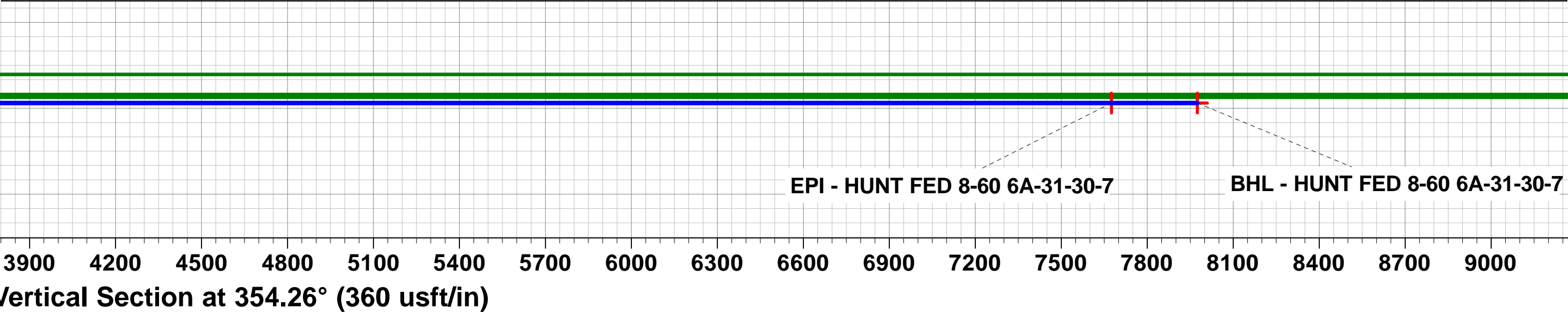
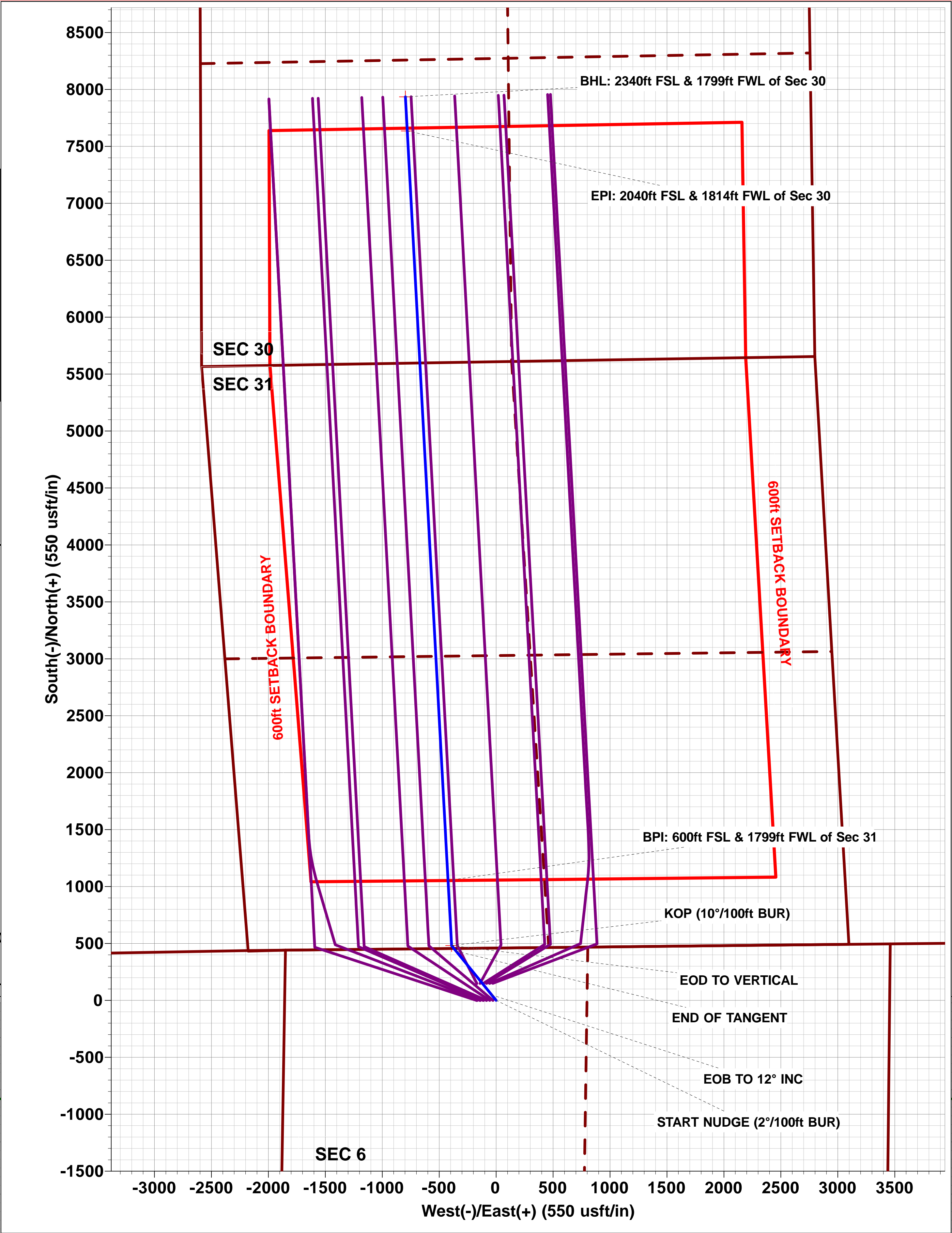
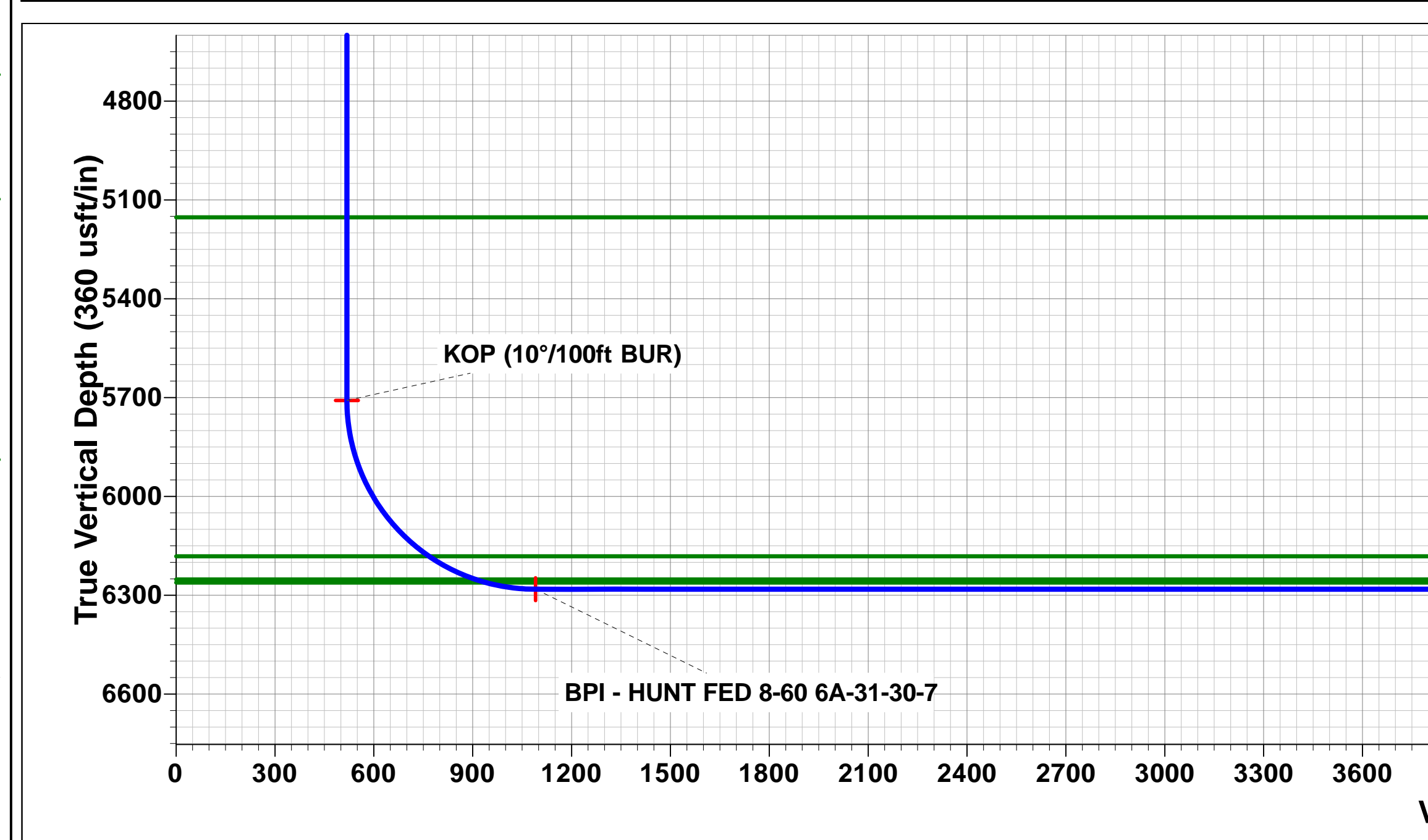
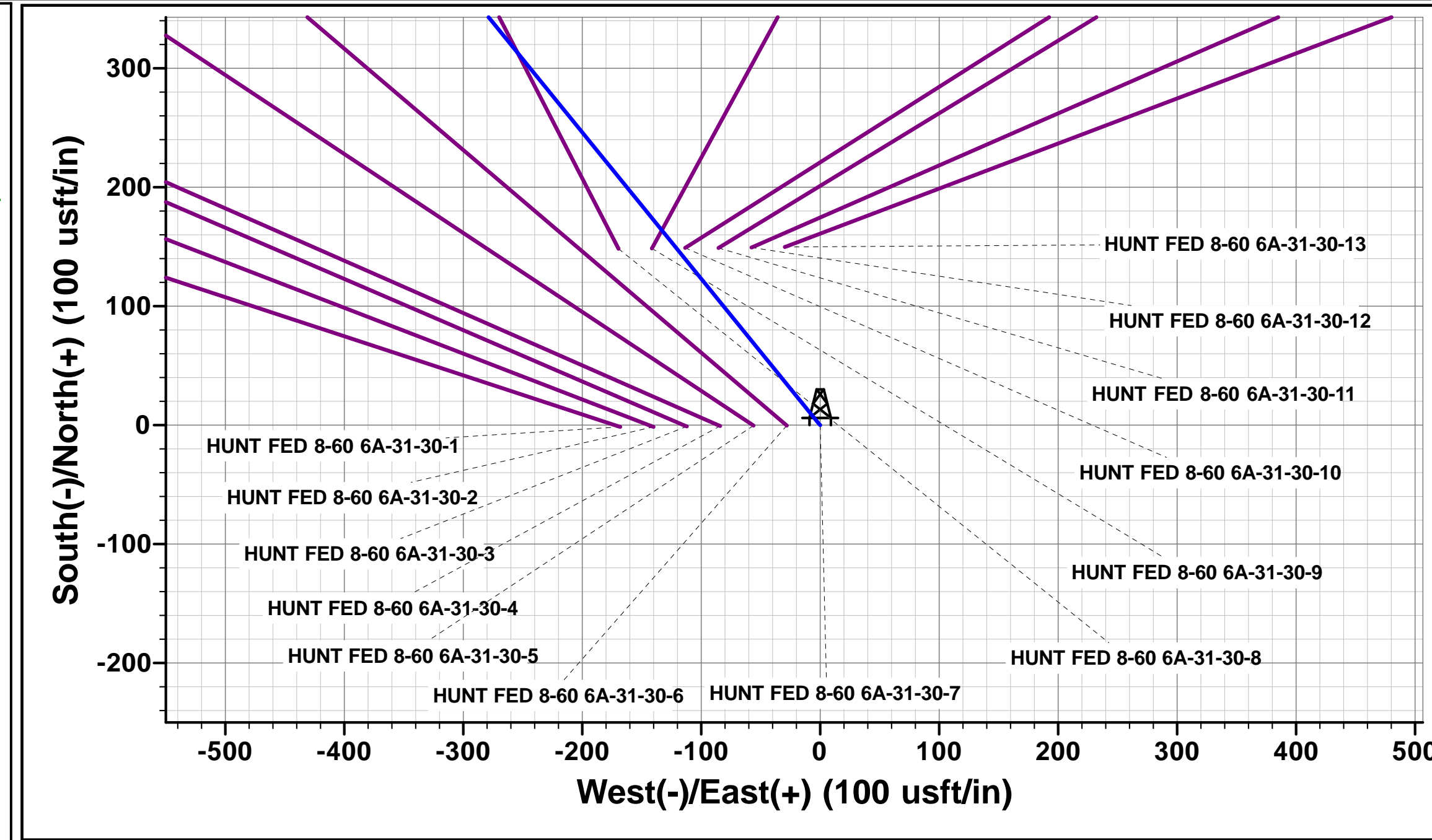
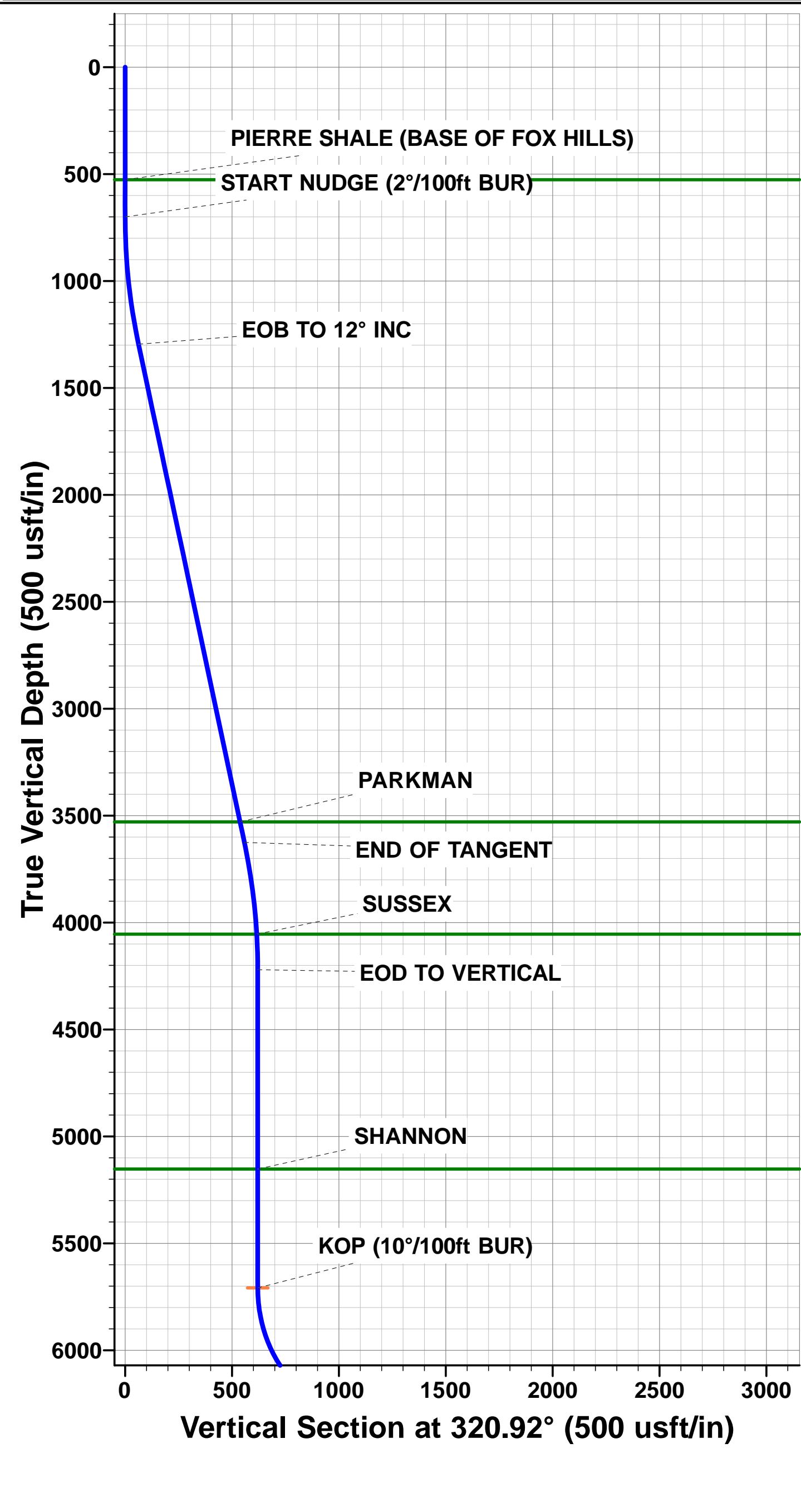




Project: WELD COUNTY, COLORADO (NAD 83)  
Site: NE NW SEC. 6 T8N R60W 6th P.M.  
Well: HUNT FED 8-60 6A-31-30-7  
Wellbore: ORIGINAL WELLBORE  
Design: PROPOSAL #1

ANNOTATIONS										PROPOSED LOCAL COORDINATES:  SHL: 459ft FNL & 1858ft FWL Sec 6  BPI : 600ft FSL & 1799ft FWL Sec 31  EPI: 2040ft FSL & 1814ft FWL Sec 30  BHL: 2340ft FSL & 1799ft FWL of Sec 30
TVD	MD	Inc	Azi	+N/-S	+E/-W	VSect	Dep	Annotation		
0.00	0.00	0.00	0.00	0.00	0.00	0.00	0.00	SHL: 459ft FNL & 1858ft FWL of Sec 6		
700.00	700.00	0.00	0.00	0.00	0.00	0.00	0.00	START NUDGE (2°/100ft BUR)		
1295.62	1300.00	12.00	320.92	48.59	-39.47	52.29	62.60	EOB TO 12° INC		
3625.18	3681.60	12.00	320.92	432.95	-351.65	465.92	557.76	END OF TANGENT		
4220.80	4281.60	0.00	0.00	481.54	-391.12	518.21	620.37	EOD TO VERTICAL		
5708.74	5769.54	0.00	0.00	481.54	-391.12	518.21	620.37	KOP (10°/100ft BUR)		
6281.70	6669.54	90.00	356.88	1053.65	-422.30	1090.58	1193.33	BPI: 600ft FSL & 1799ft FWL of Sec 31		
6281.70	13260.95	90.00	356.89	7635.31	-780.61	7675.10	7784.74	EPI: 2040ft FSL & 1814ft FWL of Sec 30		
6281.70	13561.24	90.00	356.87	7935.16	-796.96	7975.08	8085.03	BHL: 2340ft FSL & 1799ft FWL of Sec 30		

WELLBORE TARGET DETAILS (LAT/LONG)					
Name	TVD	+N/-S	+E/-W	Latitude	Longitude
KOP - HUNT FED 8-60 6A-31-30-7	5708.74	481.54	-391.12	40.698625	-104.138003
BHL - HUNT FED 8-60 6A-31-30-7	6281.70	7935.16	-796.96	40.719083	-104.139467
BPI - HUNT FED 8-60 6A-31-30-7	6281.70	1053.65	-422.30	40.700195	-104.138115
EPI - HUNT FED 8-60 6A-31-30-7	6281.70	7635.31	-780.61	40.718260	-104.139408



# Planning Report



<b>Database:</b>	EDM 5000.1 Single User Db	<b>Local Co-ordinate Reference:</b>	Well HUNT FED 8-60 6A-31-30-7
<b>Company:</b>	BISON OIL & GAS II, LLC	<b>TVD Reference:</b>	KB-EST @ 4946.70usft (Original Well Elev)
<b>Project:</b>	WELD COUNTY, COLORADO (NAD 83)	<b>MD Reference:</b>	KB-EST @ 4946.70usft (Original Well Elev)
<b>Site:</b>	NE NW SEC. 6 T8N R60W 6th P.M.	<b>North Reference:</b>	True
<b>Well:</b>	HUNT FED 8-60 6A-31-30-7	<b>Survey Calculation Method:</b>	Minimum Curvature
<b>Wellbore:</b>	ORIGINAL WELLBORE		
<b>Design:</b>	PROPOSAL #1		

<b>Project</b>	WELD COUNTY, COLORADO (NAD 83)		
<b>Map System:</b>	US State Plane 1983	<b>System Datum:</b>	Mean Sea Level
<b>Geo Datum:</b>	North American Datum 1983		
<b>Map Zone:</b>	Colorado Northern Zone		Using geodetic scale factor

<b>Site</b>	NE NW SEC. 6 T8N R60W 6th P.M.		
<b>Site Position:</b>		<b>Northing:</b>	1,499,148.34 usft
<b>From:</b>	Lat/Long	<b>Easting:</b>	3,378,394.93 usft
<b>Position Uncertainty:</b>	0.00 usft	<b>Slot Radius:</b>	1.10000ft
		<b>Latitude:</b>	40.695562
		<b>Longitude:</b>	-104.135358
		<b>Grid Convergence:</b>	0.88 °

<b>Well</b>	HUNT FED 8-60 6A-31-30-7		
<b>Well Position</b>	<b>+N/-S</b>	634.29 usft	<b>Northing:</b>
	<b>+E/-W</b>	-342.18 usft	<b>Easting:</b>
<b>Position Uncertainty</b>		0.00 usft	<b>Wellhead Elevation:</b>
			usft
			<b>Latitude:</b>
			40.697303
			<b>Longitude:</b>
			-104.136592
			<b>Ground Level:</b>
			4,921.70 usft

<b>Wellbore</b>	ORIGINAL WELLBORE				
<b>Magnetics</b>	<b>Model Name</b>	<b>Sample Date</b>	<b>Declination (°)</b>	<b>Dip Angle (°)</b>	<b>Field Strength (nT)</b>
	IGRF2015	28/11/2017	7.85	67.17	52,558

<b>Design</b>	PROPOSAL #1			
<b>Audit Notes:</b>				
<b>Version:</b>	<b>Phase:</b>	PROTOTYPE	<b>Tie On Depth:</b>	0.00
<b>Vertical Section:</b>	<b>Depth From (TVD) (usft)</b>	<b>+N/-S (usft)</b>	<b>+E/-W (usft)</b>	<b>Direction (°)</b>
	6,281.70	0.00	0.00	354.26

<b>Plan Sections</b>											
MD (usft)	Inc (°)	Azi (°)	Vertical Depth	SS (usft)	+N/-S (usft)	+E/-W (usft)	Dogleg Rate (°/100usf)	Build Rate (°/100usf)	Turn Rate (°/100usf)	TFO (°)	Target
0.00	0.00	0.00	0.00	-4,946.70	0.00	0.00	0.00	0.00	0.00	0.00	
700.00	0.00	0.00	700.00	-4,246.70	0.00	0.00	0.00	0.00	0.00	0.00	
1,300.00	12.00	320.92	1,295.62	-3,651.08	48.59	-39.47	2.00	2.00	0.00	320.92	
3,681.60	12.00	320.92	3,625.18	-1,321.52	432.95	-351.65	0.00	0.00	0.00	0.00	
4,281.60	0.00	0.00	4,220.80	-725.90	481.54	-391.12	2.00	-2.00	0.00	180.00	
5,769.54	0.00	0.00	5,708.74	762.04	481.54	-391.12	0.00	0.00	0.00	0.00	KOP - HUNT FED 8
6,669.54	90.00	356.88	6,281.70	1,335.00	1,053.65	-422.30	10.00	10.00	-0.35	356.88	BPI - HUNT FED 8-
13,260.95	90.00	356.89	6,281.70	1,335.00	7,635.31	-780.61	0.00	0.00	0.00	88.34	EPI - HUNT FED 8-
13,561.24	90.00	356.87	6,281.70	1,335.00	7,935.16	-796.96	0.00	0.00	0.00	-90.75	BHL - HUNT FED 8

## Planning Report



<b>Database:</b>	EDM 5000.1 Single User Db	<b>Local Co-ordinate Reference:</b>	Well HUNT FED 8-60 6A-31-30-7
<b>Company:</b>	BISON OIL & GAS II, LLC	<b>TVD Reference:</b>	KB-EST @ 4946.70usft (Original Well Elev)
<b>Project:</b>	WELD COUNTY, COLORADO (NAD 83)	<b>MD Reference:</b>	KB-EST @ 4946.70usft (Original Well Elev)
<b>Site:</b>	NE NW SEC. 6 T8N R60W 6th P.M.	<b>North Reference:</b>	True
<b>Well:</b>	HUNT FED 8-60 6A-31-30-7	<b>Survey Calculation Method:</b>	Minimum Curvature
<b>Wellbore:</b>	ORIGINAL WELLBORE		
<b>Design:</b>	PROPOSAL #1		

## Planned Survey

MD (usft)	Inc (°)	Azi (°)	TVD (usft)	SS (usft)	+N/-S (usft)	+E/-W (usft)	Vertical Section (usft)	Dogleg Rate (°/100usft)	Build Rate (°/100usft)	Turn Rate (°/100usft)
<b>SHL: 459ft FNL &amp; 185ft FWL of Sec 6</b>										
0.00	0.00	0.00	0.00	4,946.70	0.00	0.00	0.00	0.00	0.00	0.00
100.00	0.00	0.00	100.00	4,846.70	0.00	0.00	0.00	0.00	0.00	0.00
200.00	0.00	0.00	200.00	4,746.70	0.00	0.00	0.00	0.00	0.00	0.00
300.00	0.00	0.00	300.00	4,646.70	0.00	0.00	0.00	0.00	0.00	0.00
400.00	0.00	0.00	400.00	4,546.70	0.00	0.00	0.00	0.00	0.00	0.00
500.00	0.00	0.00	500.00	4,446.70	0.00	0.00	0.00	0.00	0.00	0.00
<b>PIERRE SHALE (BASE OF FOX HILLS)</b>										
526.70	0.00	0.00	526.70	4,420.00	0.00	0.00	0.00	0.00	0.00	0.00
600.00	0.00	0.00	600.00	4,346.70	0.00	0.00	0.00	0.00	0.00	0.00
<b>START NUDGE (2°/100ft BUR)</b>										
700.00	0.00	0.00	700.00	4,246.70	0.00	0.00	0.00	0.00	0.00	0.00
800.00	2.00	320.92	799.98	4,146.72	1.35	-1.10	1.46	2.00	2.00	0.00
900.00	4.00	320.92	899.84	4,046.86	5.42	-4.40	5.83	2.00	2.00	0.00
1,000.00	6.00	320.92	999.45	3,947.25	12.18	-9.89	13.11	2.00	2.00	0.00
1,100.00	8.00	320.92	1,098.70	3,848.00	21.64	-17.58	23.29	2.00	2.00	0.00
1,200.00	10.00	320.92	1,197.47	3,749.23	33.78	-27.44	36.36	2.00	2.00	0.00
<b>EOB TO 12° INC</b>										
1,300.00	12.00	320.92	1,295.62	3,651.08	48.59	-39.47	52.29	2.00	2.00	0.00
1,400.00	12.00	320.92	1,393.44	3,553.26	64.73	-52.58	69.66	0.00	0.00	0.00
1,500.00	12.00	320.92	1,491.25	3,455.45	80.87	-65.68	87.03	0.00	0.00	0.00
1,600.00	12.00	320.92	1,589.07	3,357.63	97.01	-78.79	104.40	0.00	0.00	0.00
1,700.00	12.00	320.92	1,686.88	3,259.82	113.15	-91.90	121.76	0.00	0.00	0.00
1,800.00	12.00	320.92	1,784.70	3,162.00	129.29	-105.01	139.13	0.00	0.00	0.00
1,900.00	12.00	320.92	1,882.51	3,064.19	145.42	-118.12	156.50	0.00	0.00	0.00
2,000.00	12.00	320.92	1,980.33	2,966.37	161.56	-131.23	173.87	0.00	0.00	0.00
2,100.00	12.00	320.92	2,078.14	2,868.56	177.70	-144.33	191.23	0.00	0.00	0.00
2,200.00	12.00	320.92	2,175.96	2,770.74	193.84	-157.44	208.60	0.00	0.00	0.00
2,300.00	12.00	320.92	2,273.77	2,672.93	209.98	-170.55	225.97	0.00	0.00	0.00
2,400.00	12.00	320.92	2,371.59	2,575.11	226.12	-183.66	243.34	0.00	0.00	0.00
2,500.00	12.00	320.92	2,469.40	2,477.30	242.25	-196.77	260.71	0.00	0.00	0.00
2,600.00	12.00	320.92	2,567.22	2,379.48	258.39	-209.87	278.07	0.00	0.00	0.00
2,700.00	12.00	320.92	2,665.03	2,281.67	274.53	-222.98	295.44	0.00	0.00	0.00
2,800.00	12.00	320.92	2,762.84	2,183.86	290.67	-236.09	312.81	0.00	0.00	0.00
2,900.00	12.00	320.92	2,860.66	2,086.04	306.81	-249.20	330.18	0.00	0.00	0.00
3,000.00	12.00	320.92	2,958.47	1,988.23	322.95	-262.31	347.54	0.00	0.00	0.00
3,100.00	12.00	320.92	3,056.29	1,890.41	339.09	-275.41	364.91	0.00	0.00	0.00
3,200.00	12.00	320.92	3,154.10	1,792.60	355.22	-288.52	382.28	0.00	0.00	0.00
3,300.00	12.00	320.92	3,251.92	1,694.78	371.36	-301.63	399.65	0.00	0.00	0.00
3,400.00	12.00	320.92	3,349.73	1,596.97	387.50	-314.74	417.01	0.00	0.00	0.00
3,500.00	12.00	320.92	3,447.55	1,499.15	403.64	-327.85	434.38	0.00	0.00	0.00
<b>PARKMAN</b>										
3,583.99	12.00	320.92	3,529.70	1,417.00	417.19	-338.86	448.97	0.00	0.00	0.00
3,600.00	12.00	320.92	3,545.36	1,401.34	419.78	-340.96	451.75	0.00	0.00	0.00
<b>END OF TANGENT</b>										
3,681.60	12.00	320.92	3,625.18	1,321.52	432.95	-351.65	465.92	0.00	0.00	0.00
3,700.00	11.63	320.92	3,643.19	1,303.51	435.87	-354.03	469.07	2.00	-2.00	0.00
3,800.00	9.63	320.92	3,741.47	1,205.23	450.19	-365.66	484.48	2.00	-2.00	0.00
3,900.00	7.63	320.92	3,840.33	1,106.37	461.84	-375.12	497.02	2.00	-2.00	0.00
4,000.00	5.63	320.92	3,939.66	1,007.04	470.81	-382.40	506.66	2.00	-2.00	0.00
4,100.00	3.63	320.92	4,039.32	907.38	477.07	-387.49	513.41	2.00	-2.00	0.00
<b>SUSSEX</b>										
4,115.40	3.32	320.92	4,054.70	892.00	477.80	-388.08	514.19	2.00	-2.00	0.00



# Planning Report



<b>Database:</b>	EDM 5000.1 Single User Db	<b>Local Co-ordinate Reference:</b>	Well HUNT FED 8-60 6A-31-30-7
<b>Company:</b>	BISON OIL & GAS II, LLC	<b>TVD Reference:</b>	KB-EST @ 4946.70usft (Original Well Elev)
<b>Project:</b>	WELD COUNTY, COLORADO (NAD 83)	<b>MD Reference:</b>	KB-EST @ 4946.70usft (Original Well Elev)
<b>Site:</b>	NE NW SEC. 6 T8N R60W 6th P.M.	<b>North Reference:</b>	True
<b>Well:</b>	HUNT FED 8-60 6A-31-30-7	<b>Survey Calculation Method:</b>	Minimum Curvature
<b>Wellbore:</b>	ORIGINAL WELLBORE		
<b>Design:</b>	PROPOSAL #1		

Planned Survey										
MD (usft)	Inc (°)	Azi (°)	TVD (usft)	SS (usft)	+N/-S (usft)	+E/-W (usft)	Vertical Section (usft)	Dogleg Rate (°/100usft)	Build Rate (°/100usft)	Turn Rate (°/100usft)
4,200.00	1.63	320.92	4,139.21	807.49	480.64	-390.39	517.24	2.00	-2.00	0.00
<b>EOD TO VERTICAL</b>										
4,281.60	0.00	0.00	4,220.80	725.90	481.54	-391.12	518.21	2.00	-2.00	0.00
4,300.00	0.00	0.00	4,239.20	707.50	481.54	-391.12	518.21	0.00	0.00	0.00
4,400.00	0.00	0.00	4,339.20	607.50	481.54	-391.12	518.21	0.00	0.00	0.00
4,500.00	0.00	0.00	4,439.20	507.50	481.54	-391.12	518.21	0.00	0.00	0.00
4,600.00	0.00	0.00	4,539.20	407.50	481.54	-391.12	518.21	0.00	0.00	0.00
4,700.00	0.00	0.00	4,639.20	307.50	481.54	-391.12	518.21	0.00	0.00	0.00
4,800.00	0.00	0.00	4,739.20	207.50	481.54	-391.12	518.21	0.00	0.00	0.00
4,900.00	0.00	0.00	4,839.20	107.50	481.54	-391.12	518.21	0.00	0.00	0.00
5,000.00	0.00	0.00	4,939.20	7.50	481.54	-391.12	518.21	0.00	0.00	0.00
5,100.00	0.00	0.00	5,039.20	-92.50	481.54	-391.12	518.21	0.00	0.00	0.00
5,200.00	0.00	0.00	5,139.20	-192.50	481.54	-391.12	518.21	0.00	0.00	0.00
<b>SHANNON</b>										
5,213.50	0.00	0.00	5,152.70	-206.00	481.54	-391.12	518.21	0.00	0.00	0.00
5,300.00	0.00	0.00	5,239.20	-292.50	481.54	-391.12	518.21	0.00	0.00	0.00
5,400.00	0.00	0.00	5,339.20	-392.50	481.54	-391.12	518.21	0.00	0.00	0.00
5,500.00	0.00	0.00	5,439.20	-492.50	481.54	-391.12	518.21	0.00	0.00	0.00
5,600.00	0.00	0.00	5,539.20	-592.50	481.54	-391.12	518.21	0.00	0.00	0.00
5,700.00	0.00	0.00	5,639.20	-692.50	481.54	-391.12	518.21	0.00	0.00	0.00
<b>KOP (10°/100ft BUR)</b>										
5,769.54	0.00	0.00	5,708.74	-762.04	481.54	-391.12	518.21	0.00	0.00	0.00
5,800.00	3.05	356.88	5,739.19	-792.49	482.35	-391.16	519.02	10.00	10.00	0.00
5,900.00	13.05	356.88	5,838.08	-891.38	496.31	-391.92	532.99	10.00	10.00	0.00
6,000.00	23.05	356.88	5,933.04	-986.34	527.20	-393.61	563.90	10.00	10.00	0.00
6,100.00	33.05	356.88	6,021.18	-1,074.48	574.09	-396.16	610.80	10.00	10.00	0.00
6,200.00	43.05	356.88	6,099.83	-1,153.13	635.55	-399.51	672.29	10.00	10.00	0.00
6,300.00	53.05	356.88	6,166.60	-1,219.90	709.71	-403.56	746.49	10.00	10.00	0.00
<b>SHARON SPRINGS SHALE</b>										
6,325.90	55.64	356.88	6,181.70	-1,235.00	730.72	-404.70	767.51	10.00	10.00	0.00
6,400.00	63.05	356.88	6,219.46	-1,272.76	794.33	-408.17	831.14	10.00	10.00	0.00
<b>NIOBRARA FORMATION</b>										
6,483.31	71.38	356.88	6,251.70	-1,305.00	870.95	-412.34	907.80	10.00	10.00	0.00
6,500.00	73.05	356.88	6,256.80	-1,310.10	886.82	-413.21	923.67	10.00	10.00	0.00
<b>NIOBRARA A CHALK</b>										
6,517.71	74.82	356.88	6,261.70	-1,315.00	903.81	-414.13	940.67	10.00	10.00	0.00
6,600.00	83.05	356.88	6,277.49	-1,330.79	984.38	-418.52	1,021.28	10.00	10.00	0.00
<b>BPI: 600ft FSL &amp; 1799ft FWL of Sec 31</b>										
6,669.54	90.00	356.88	6,281.70	-1,335.00	1,053.65	-422.30	1,090.58	10.00	10.00	0.00
6,700.00	90.00	356.88	6,281.70	-1,335.00	1,084.06	-423.96	1,121.01	0.00	0.00	0.00
6,800.00	90.00	356.88	6,281.70	-1,335.00	1,183.92	-429.40	1,220.90	0.00	0.00	0.00
6,900.00	90.00	356.88	6,281.70	-1,335.00	1,283.77	-434.84	1,320.80	0.00	0.00	0.00
7,000.00	90.00	356.88	6,281.70	-1,335.00	1,383.62	-440.28	1,420.69	0.00	0.00	0.00
7,100.00	90.00	356.88	6,281.70	-1,335.00	1,483.47	-445.72	1,520.59	0.00	0.00	0.00
7,200.00	90.00	356.88	6,281.70	-1,335.00	1,583.32	-451.16	1,620.48	0.00	0.00	0.00
7,300.00	90.00	356.88	6,281.70	-1,335.00	1,683.18	-456.61	1,720.38	0.00	0.00	0.00
7,400.00	90.00	356.88	6,281.70	-1,335.00	1,783.03	-462.05	1,820.28	0.00	0.00	0.00
7,500.00	90.00	356.88	6,281.70	-1,335.00	1,882.88	-467.49	1,920.17	0.00	0.00	0.00
7,600.00	90.00	356.88	6,281.70	-1,335.00	1,982.73	-472.93	2,020.07	0.00	0.00	0.00
7,700.00	90.00	356.88	6,281.70	-1,335.00	2,082.58	-478.37	2,119.96	0.00	0.00	0.00
7,800.00	90.00	356.88	6,281.70	-1,335.00	2,182.44	-483.81	2,219.86	0.00	0.00	0.00
7,900.00	90.00	356.88	6,281.70	-1,335.00	2,282.29	-489.25	2,319.75	0.00	0.00	0.00
8,000.00	90.00	356.88	6,281.70	-1,335.00	2,382.14	-494.69	2,419.65	0.00	0.00	0.00

# Planning Report



<b>Database:</b>	EDM 5000.1 Single User Db	<b>Local Co-ordinate Reference:</b>	Well HUNT FED 8-60 6A-31-30-7
<b>Company:</b>	BISON OIL & GAS II, LLC	<b>TVD Reference:</b>	KB-EST @ 4946.70usft (Original Well Elev)
<b>Project:</b>	WELD COUNTY, COLORADO (NAD 83)	<b>MD Reference:</b>	KB-EST @ 4946.70usft (Original Well Elev)
<b>Site:</b>	NE NW SEC. 6 T8N R60W 6th P.M.	<b>North Reference:</b>	True
<b>Well:</b>	HUNT FED 8-60 6A-31-30-7	<b>Survey Calculation Method:</b>	Minimum Curvature
<b>Wellbore:</b>	ORIGINAL WELLBORE		
<b>Design:</b>	PROPOSAL #1		

Planned Survey										
MD (usft)	Inc (°)	Azi (°)	TVD (usft)	SS (usft)	+N/-S (usft)	+E/-W (usft)	Vertical Section (usft)	Dogleg Rate (°/100usft)	Build Rate (°/100usft)	Turn Rate (°/100usft)
8,100.00	90.00	356.88	6,281.70	-1,335.00	2,481.99	-500.13	2,519.55	0.00	0.00	0.00
8,200.00	90.00	356.88	6,281.70	-1,335.00	2,581.84	-505.57	2,619.44	0.00	0.00	0.00
8,300.00	90.00	356.88	6,281.70	-1,335.00	2,681.70	-511.00	2,719.34	0.00	0.00	0.00
8,400.00	90.00	356.88	6,281.70	-1,335.00	2,781.55	-516.44	2,819.23	0.00	0.00	0.00
8,500.00	90.00	356.88	6,281.70	-1,335.00	2,881.40	-521.88	2,919.13	0.00	0.00	0.00
8,600.00	90.00	356.88	6,281.70	-1,335.00	2,981.25	-527.32	3,019.02	0.00	0.00	0.00
8,700.00	90.00	356.88	6,281.70	-1,335.00	3,081.10	-532.76	3,118.92	0.00	0.00	0.00
8,800.00	90.00	356.88	6,281.70	-1,335.00	3,180.96	-538.20	3,218.82	0.00	0.00	0.00
8,900.00	90.00	356.88	6,281.70	-1,335.00	3,280.81	-543.64	3,318.71	0.00	0.00	0.00
9,000.00	90.00	356.88	6,281.70	-1,335.00	3,380.66	-549.07	3,418.61	0.00	0.00	0.00
9,100.00	90.00	356.88	6,281.70	-1,335.00	3,480.51	-554.51	3,518.50	0.00	0.00	0.00
9,200.00	90.00	356.88	6,281.70	-1,335.00	3,580.36	-559.95	3,618.40	0.00	0.00	0.00
9,300.00	90.00	356.88	6,281.70	-1,335.00	3,680.22	-565.39	3,718.29	0.00	0.00	0.00
9,400.00	90.00	356.88	6,281.70	-1,335.00	3,780.07	-570.82	3,818.19	0.00	0.00	0.00
9,500.00	90.00	356.88	6,281.70	-1,335.00	3,879.92	-576.26	3,918.08	0.00	0.00	0.00
9,600.00	90.00	356.88	6,281.70	-1,335.00	3,979.77	-581.70	4,017.98	0.00	0.00	0.00
9,700.00	90.00	356.88	6,281.70	-1,335.00	4,079.62	-587.13	4,117.88	0.00	0.00	0.00
9,800.00	90.00	356.88	6,281.70	-1,335.00	4,179.48	-592.57	4,217.77	0.00	0.00	0.00
9,900.00	90.00	356.88	6,281.70	-1,335.00	4,279.33	-598.01	4,317.67	0.00	0.00	0.00
10,000.00	90.00	356.88	6,281.70	-1,335.00	4,379.18	-603.44	4,417.56	0.00	0.00	0.00
10,100.00	90.00	356.88	6,281.70	-1,335.00	4,479.03	-608.88	4,517.46	0.00	0.00	0.00
10,200.00	90.00	356.88	6,281.70	-1,335.00	4,578.88	-614.31	4,617.35	0.00	0.00	0.00
10,300.00	90.00	356.88	6,281.70	-1,335.00	4,678.74	-619.75	4,717.25	0.00	0.00	0.00
10,400.00	90.00	356.88	6,281.70	-1,335.00	4,778.59	-625.19	4,817.14	0.00	0.00	0.00
10,500.00	90.00	356.88	6,281.70	-1,335.00	4,878.44	-630.62	4,917.04	0.00	0.00	0.00
10,600.00	90.00	356.88	6,281.70	-1,335.00	4,978.29	-636.06	5,016.94	0.00	0.00	0.00
10,700.00	90.00	356.88	6,281.70	-1,335.00	5,078.15	-641.49	5,116.83	0.00	0.00	0.00
10,800.00	90.00	356.88	6,281.70	-1,335.00	5,178.00	-646.92	5,216.73	0.00	0.00	0.00
10,900.00	90.00	356.88	6,281.70	-1,335.00	5,277.85	-652.36	5,316.62	0.00	0.00	0.00
11,000.00	90.00	356.88	6,281.70	-1,335.00	5,377.70	-657.79	5,416.52	0.00	0.00	0.00
11,100.00	90.00	356.88	6,281.70	-1,335.00	5,477.55	-663.23	5,516.41	0.00	0.00	0.00
11,200.00	90.00	356.89	6,281.70	-1,335.00	5,577.41	-668.66	5,616.31	0.00	0.00	0.00
11,300.00	90.00	356.89	6,281.70	-1,335.00	5,677.26	-674.10	5,716.20	0.00	0.00	0.00
11,400.00	90.00	356.89	6,281.70	-1,335.00	5,777.11	-679.53	5,816.10	0.00	0.00	0.00
11,500.00	90.00	356.89	6,281.70	-1,335.00	5,876.96	-684.96	5,915.99	0.00	0.00	0.00
11,600.00	90.00	356.89	6,281.70	-1,335.00	5,976.82	-690.40	6,015.89	0.00	0.00	0.00
11,700.00	90.00	356.89	6,281.70	-1,335.00	6,076.67	-695.83	6,115.79	0.00	0.00	0.00
11,800.00	90.00	356.89	6,281.70	-1,335.00	6,176.52	-701.26	6,215.68	0.00	0.00	0.00
11,900.00	90.00	356.89	6,281.70	-1,335.00	6,276.37	-706.69	6,315.58	0.00	0.00	0.00
12,000.00	90.00	356.89	6,281.70	-1,335.00	6,376.23	-712.13	6,415.47	0.00	0.00	0.00
12,100.00	90.00	356.89	6,281.70	-1,335.00	6,476.08	-717.56	6,515.37	0.00	0.00	0.00
12,200.00	90.00	356.89	6,281.70	-1,335.00	6,575.93	-722.99	6,615.26	0.00	0.00	0.00
12,300.00	90.00	356.89	6,281.70	-1,335.00	6,675.78	-728.42	6,715.16	0.00	0.00	0.00
12,400.00	90.00	356.89	6,281.70	-1,335.00	6,775.63	-733.86	6,815.05	0.00	0.00	0.00
12,500.00	90.00	356.89	6,281.70	-1,335.00	6,875.49	-739.29	6,914.95	0.00	0.00	0.00
12,600.00	90.00	356.89	6,281.70	-1,335.00	6,975.34	-744.72	7,014.84	0.00	0.00	0.00
12,700.00	90.00	356.89	6,281.70	-1,335.00	7,075.19	-750.15	7,114.74	0.00	0.00	0.00
12,800.00	90.00	356.89	6,281.70	-1,335.00	7,175.04	-755.58	7,214.63	0.00	0.00	0.00
12,900.00	90.00	356.89	6,281.70	-1,335.00	7,274.90	-761.01	7,314.53	0.00	0.00	0.00
13,000.00	90.00	356.89	6,281.70	-1,335.00	7,374.75	-766.44	7,414.42	0.00	0.00	0.00
13,100.00	90.00	356.89	6,281.70	-1,335.00	7,474.60	-771.87	7,514.32	0.00	0.00	0.00
13,200.00	90.00	356.89	6,281.70	-1,335.00	7,574.45	-777.30	7,614.22	0.00	0.00	0.00
<b>EPI: 2040ft FSL &amp; 1814ft FWL of Sec 30</b>										
<b>13,260.95</b>	<b>90.00</b>	<b>356.89</b>	<b>6,281.70</b>	<b>-1,335.00</b>	<b>7,635.31</b>	<b>-780.61</b>	<b>7,675.10</b>	<b>0.00</b>	<b>0.00</b>	<b>0.00</b>

<b>Database:</b>	EDM 5000.1 Single User Db	<b>Local Co-ordinate Reference:</b>	Well HUNT FED 8-60 6A-31-30-7
<b>Company:</b>	BISON OIL & GAS II, LLC	<b>TVD Reference:</b>	KB-EST @ 4946.70usft (Original Well Elev)
<b>Project:</b>	WELD COUNTY, COLORADO (NAD 83)	<b>MD Reference:</b>	KB-EST @ 4946.70usft (Original Well Elev)
<b>Site:</b>	NE NW SEC. 6 T8N R60W 6th P.M.	<b>North Reference:</b>	True
<b>Well:</b>	HUNT FED 8-60 6A-31-30-7	<b>Survey Calculation Method:</b>	Minimum Curvature
<b>Wellbore:</b>	ORIGINAL WELLBORE		
<b>Design:</b>	PROPOSAL #1		

## Planned Survey

MD (usft)	Inc (°)	Azi (°)	TVD (usft)	SS (usft)	+N/-S (usft)	+E/-W (usft)	Vertical Section (usft)	Dogleg Rate (°/100usft)	Build Rate (°/100usft)	Turn Rate (°/100usft)
13,300.00	90.00	356.89	6,281.70	-1,335.00	7,674.31	-782.73	7,714.11	0.00	0.00	0.00
13,400.00	90.00	356.88	6,281.70	-1,335.00	7,774.16	-788.17	7,814.01	0.00	0.00	0.00
13,500.00	90.00	356.88	6,281.70	-1,335.00	7,874.01	-793.62	7,913.90	0.00	0.00	0.00
<b>BHL: 2340ft FSL &amp; 1799ft FWL of Sec 30</b>										
<b>13,561.24</b>	<b>90.00</b>	<b>356.87</b>	<b>6,281.70</b>	<b>-1,335.00</b>	<b>7,935.16</b>	<b>-796.96</b>	<b>7,975.08</b>	<b>0.00</b>	<b>0.00</b>	<b>0.00</b>

## Formations

MD (usft)	TVD (usft)	Name	Lithology	Dip (°)	Dip Direction (°)
526.70	526.70	PIERRE SHALE (BASE OF FOX HI			
3,583.99	3,529.70	PARKMAN			
4,115.40	4,054.70	SUSSEX			
5,213.50	5,152.70	SHANNON			
6,325.90	6,181.70	SHARON SPRINGS SHALE			
6,483.31	6,251.70	NIOBRARA FORMATION			
6,517.71	6,261.70	NIOBRARA A CHALK			

## Plan Annotations

MD (usft)	TVD (usft)	Local Coordinates		Comment
		+N/-S (usft)	+E/-W (usft)	
0.00	0.00	0.00	0.00	SHL: 459ft FNL & 1858ft FWL of Sec 6
700.00	700.00	0.00	0.00	START NUDGE (2°/100ft BUR)
1,300.00	1,295.62	48.59	-39.47	EOB TO 12° INC
3,681.60	3,625.18	432.95	-351.65	END OF TANGENT
4,281.60	4,220.80	481.54	-391.12	EOD TO VERTICAL
5,769.54	5,708.74	481.54	-391.12	KOP (10°/100ft BUR)
6,669.54	6,281.70	1,053.65	-422.30	BPI: 600ft FSL & 1799ft FWL of Sec 31
13,260.95	6,281.70	7,635.31	-780.61	EPI: 2040ft FSL & 1814ft FWL of Sec 30
13,561.24	6,281.70	7,935.16	-796.96	BHL: 2340ft FSL & 1799ft FWL of Sec 30