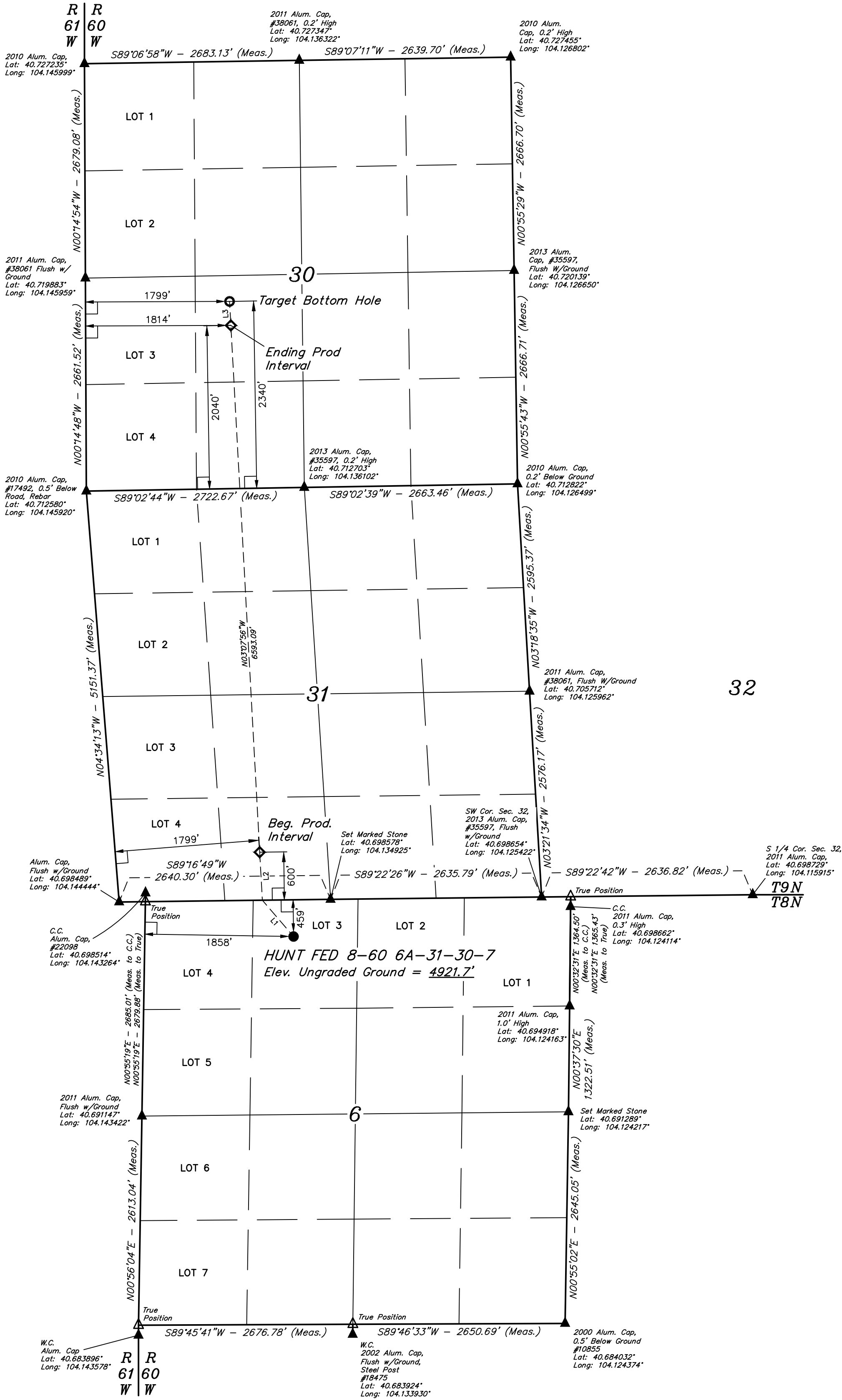


LEGEND:

- 90° SYMBOL
- PROPOSED WELLHEAD.
- PRODUCTION INTERVAL.
- TARGET BOTTOM HOLE.
- SECTION CORNERS LOCATED. (NAD 83)
- SECTION CORNERS RE-ESTABLISHED. (Not Set on Ground.) (NAD 83)

T8N, R60W, 6th P.M.

LINE TABLE		
LINE	DIRECTION	LENGTH
L1	N40°39'34"W	598.50'
L2	N03°07'56"W	600.53'
L3	N03°07'56"W	300.22'



SURFACE LOCATION 459' FNL 1858' FWL	BEG. PROD. INTERVAL 600' FSL 1799' FWL	ENDING PROD. INTERVAL 2040' FSL 1814' FWL	TARGET BOTTOM HOLE 2340' FSL 1799' FWL
NAD 83 (SURFACE LOCATION)	NAD 83 (BEG. PROD. INTERVAL)	NAD 83 (ENDING PROD. INTERVAL)	NAD 83 (TARGET BOTTOM HOLE)
LATITUDE = 40°41'50.29" (40.697303)	LATITUDE = 40°42'00.70" (40.700195)	LATITUDE = 40°43'05.74" (40.718260)	LATITUDE = 40°43'08.70" (40.719083)
LONGITUDE = 104°08'11.73" (104.136592)	LONGITUDE = 104°08'17.21" (104.138115)	LONGITUDE = 104°08'21.87" (104.139408)	LONGITUDE = 104°08'22.08" (104.139467)
NAD 27 (SURFACE LOCATION)	NAD 27 (BEG. PROD. INTERVAL)	NAD 27 (ENDING PROD. INTERVAL)	NAD 27 (TARGET BOTTOM HOLE)
LATITUDE = 40°41'50.34" (40.697318)	LATITUDE = 40°42'00.75" (40.700209)	LATITUDE = 40°43'05.79" (40.718275)	LATITUDE = 40°43'08.75" (40.719097)
LONGITUDE = 104°08'09.92" (104.136088)	LONGITUDE = 104°08'15.40" (104.137611)	LONGITUDE = 104°08'20.05" (104.138904)	LONGITUDE = 104°08'20.27" (104.138963)
STATE PLANE NAD 83 (CO. NORTH)	STATE PLANE NAD 83 (CO. NORTH)	STATE PLANE NAD 83 (CO. NORTH)	STATE PLANE NAD 83 (CO. NORTH)
N: 1499777.33 E: 3378043.04	N: 1500824.22 E: 3377604.54	N: 1507399.65 E: 3377145.24	N: 1507699.06 E: 3377124.32
STATE PLANE NAD 27 (CO. NORTH)	STATE PLANE NAD 27 (CO. NORTH)	STATE PLANE NAD 27 (CO. NORTH)	STATE PLANE NAD 27 (CO. NORTH)
N: 499776.05 E: 2378192.80	N: 500822.94 E: 2377754.28	N: 507398.25 E: 2377294.87	N: 507697.65 E: 2377273.95

**BASIS OF BEARINGS**  
BASIS OF BEARINGS IS A G.P.S. OBSERVATION

**BASIS OF ELEVATION**  
SPOT ELEVATION LOCATED AT THE NORTHEAST CORNER OF SECTION 2, T9N, R61W, 6th P.M., TAKEN FROM THE GROVER SOUTH, QUADRANGLE, COLORADO, WELD COUNTY, 7.5 MINUTE QUAD (TOPOGRAPHICAL MAP) PUBLISHED BY THE UNITED STATES DEPARTMENT OF THE INTERIOR, GEOLOGICAL SURVEY. SAID ELEVATION IS MARKED AS BEING 5043 FEET.

**UELS, LLC**  
Corporate Office \* 85 South 200 East  
Vernal, UT 84078 \* (435) 789-1017



CERTIFICATE OF RECORD  
THIS IS TO CERTIFY THAT THE ABOVE SURVEY WAS CONDUCTED IN ACCORDANCE WITH THE REQUIREMENTS OF THE COLORADO SURVEYING ACT, AND THAT THE SAME ARE TRUE AND CORRECT TO THE BEST OF MY KNOWLEDGE AND BELIEF.



**BISON OIL & GAS II**

HUNT FED 8-60 6A-31-30-7  
LOT 3, SECTION 6, T8N, R60W, 6th P.M.  
WELD COUNTY, COLORADO

SURVEYED BY	JAMES FRESHWATER	10-27-17	SCALE
DRAWN BY	D.COX	10-31-17	1" = 1000'

**WELL LOCATION PLAT**