



SRC ENERGY

**Operator:** SRC Energy  
**Well Name:** Hergert 8-33  
**Legal:** SWSW, Section 8, Township 6N, Range 66W  
**Location:** Weld County, CO  
**API:** 05-123-22692

Deepest Water Well  
Within 1 Mile = 675'





## Wellbore History

Spud Date: 3/15/2005  
Surf Csg: 8.625", 24# @ 813' – 560 sx  
Prod Csg: 4.5", 11.6# @ 7395' – 150 sx  
S.C. 1.1: 0'-4000' – 596 sx  
TOC: 6300' (CBL) & 0' (CALC)  
Perfs: NBRR: 7054'-7074'  
CODL: 7245'-7262'

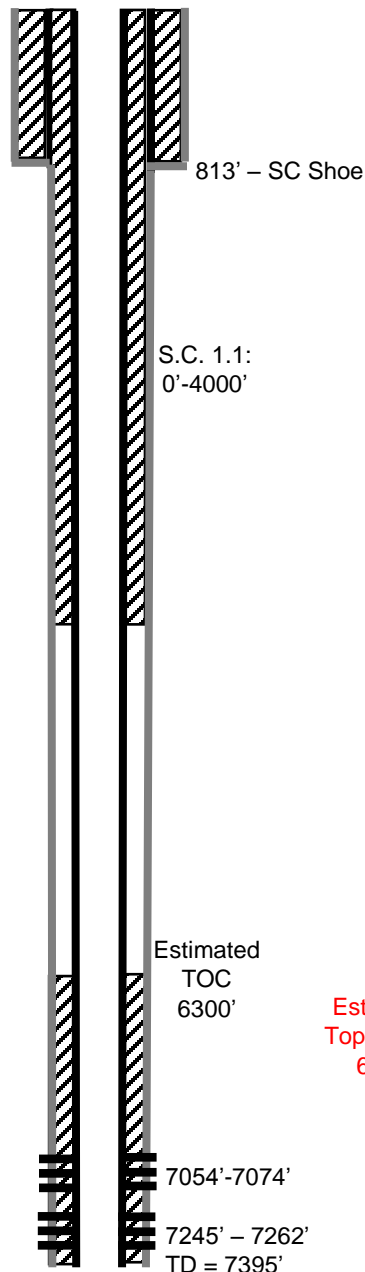
## P&A Procedure

Set CIBP @ 6979'  
Run CBL, ensure adequate remedial cement  
Set 26 sx on top of CIBP (267' plug)  
Set 29 sx @ 3800' (300' plug)  
Pmp 95 sx @ 1000' to surface

## Key

-  Existing Cement Coverage
-  CICR
-  Cement Pumped
-  CIBP

## Current



## Proposed

