



SRC ENERGY

Operator: SRC Energy
Well Name: Bucklen 12-31
Legal: NWSW, Section 31, Township 6N, Range 65W
Location: Weld County, CO
API: 05-123-12620

Deepest Water Well
Within 1 Mile = 123'





Wellbore History

Spud Date: 9/11/1985
Surf Csg: 8.625", 24# @ 337' – 260 sx
Prod Csg: 4.5", 11.6# @ 7180' – 220 sx
S.C. 1.1: 518'-1610' – 444 sx
TOC: 6130' (CBL) & 518' (CBL)
Perfs: NBRR: 6771'-6984'
CODL: 7072'-7086'

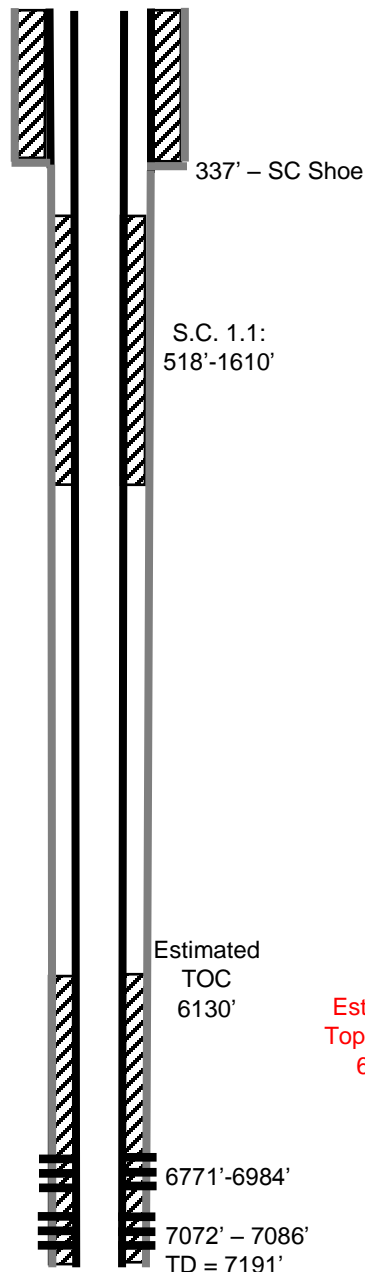
P&A Procedure

Set CIBP @ 6696'
Set 13 sx on top of CIBP (127' plug)
Set 29 sx @ 1500' (300' plug)
Cut casing @ 450'
Pmp 192 sx @ 500' to surface

Key

-  Existing Cement Coverage
-  CICR
-  Cement Pumped
-  CIBP

Current



Proposed

