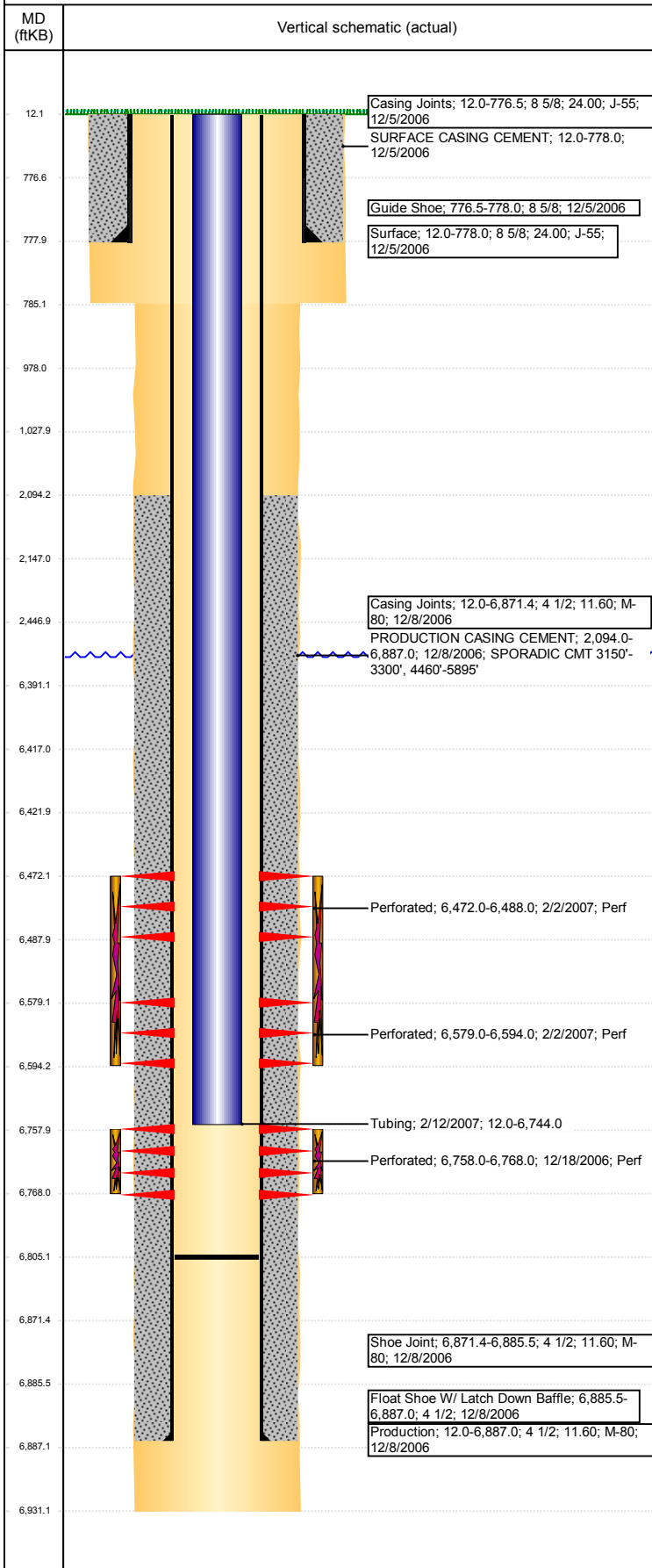


**Well Name: THRALL USX AA19-11**

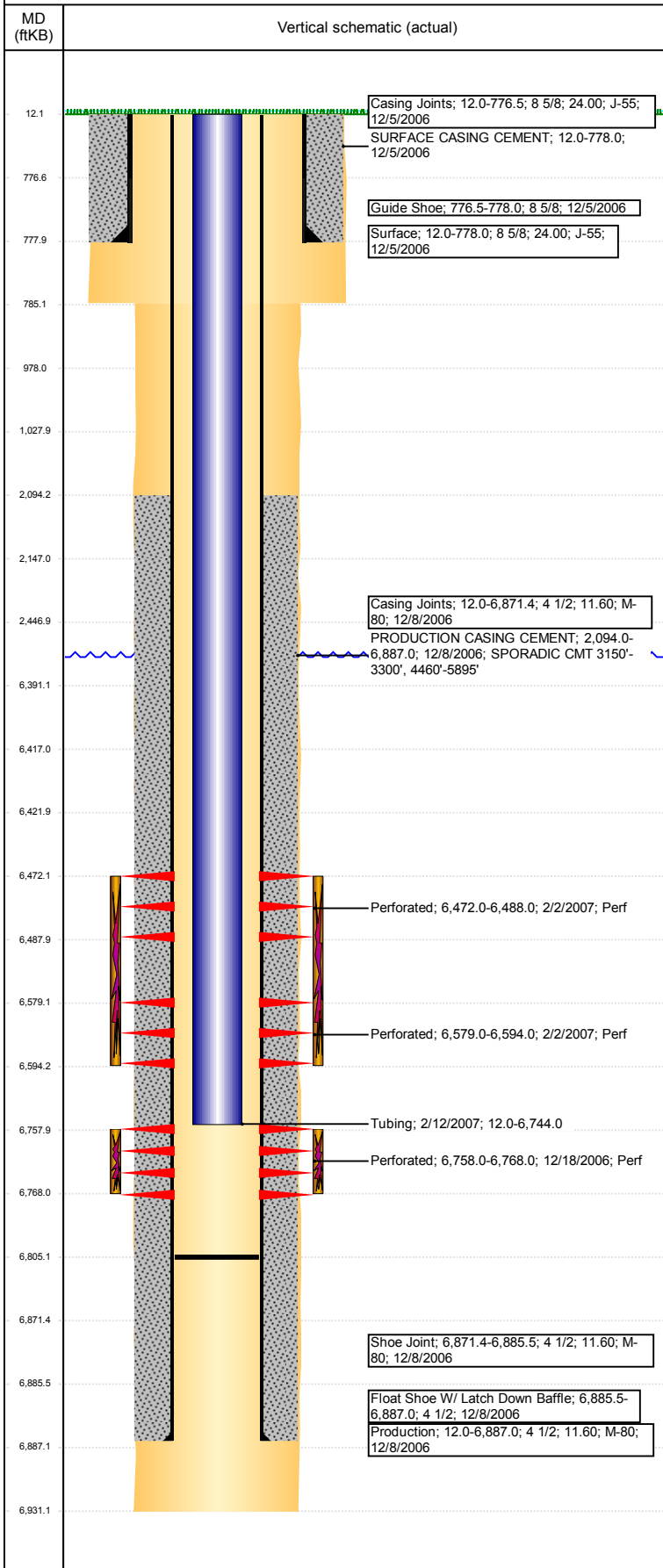
VERTICAL - ORIGINAL HOLE, 12/15/2017 10:33:56 AM



Well Header						
API 05-123-27051	Business Unit DJ BASIN		District 15		Well Config VERTICAL	
Original KB Elevation (ft) 4,662	KB - GL / MSL (ftKB) 12.00		Spud Date 12/4/2006		P & A Date	
Comment DISCREPANCY IN TD: DRILLERS DPTH 6914'/ LOGGERS DPTH 6931'						
Directions To Well						
Congressional Location						
Quarter 3 NE	Quarter 4 SW	Section 19	Township 6	Twnshp N/S Dir N	Range 63	Range E/W Dir W
Bottom Hole Location						
North-South Distance (ft)		From N or S Line		East-West Distance (ft)		From E or W Line
Plug Back Total Depths						
Date	Depth (ftKB)	Method		Com		
12/5/2006	6,871.8	CASING TALLY		FLOAT SHOE W/LATCH DOWN BAFFLE		
12/13/2006	6,879.0	CASED HOLE LOG		DEPTH LOGGER ON CBL		
2/8/2007	6,805.0	TAG		C/O TO 6805'		
Wellbore Sections						
Section Des		Size (in)		Act Top, MD (ftKB)		Act Btm, MD (ftKB)
SURFACE		12 1/4		12		785
PRODUCTION		7 7/8		785		6,931
Zone Statuses						
Zone Name	Status Date	Status	Fluid Type	Job	Prod Method	
NIOBRARA	2/23/2007	PR		DRILLING/CO...		
CODELL	2/23/2007	PR		DRILLING/CO...		
Casing Strings						
Surface, 778.0ftKB						
Casing Description Surface	Run Date 12/5/2006	OD (in) 8 5/8	Wt/Len (l...) 24.00	Grade J-55	Top, MD (ft...) 12.0	MD (ftKB) 778.0
Production, 6,887.0ftKB						
Casing Description Production	Run Date 12/8/2006	OD (in) 4 1/2	Wt/Len (l...) 11.60	Grade M-80	Top, MD (ft...) 12.0	MD (ftKB) 6,887.0
Cement						
Description				Top Depth (ftKB)		Bottom Depth (ftKB)
SURFACE CASING CEMENT				12.0		778.0
Description				Top Depth (ftKB)		Bottom Depth (ftKB)
PRODUCTION CASING CEMENT				2,094.0		6,887.0
Description				Top Depth (ftKB)		Bottom Depth (ftKB)
Dump Bail				6,391.0		6,417.0
Description				Top Depth (ftKB)		Bottom Depth (ftKB)
Balance Plug				2,147.0		2,447.0
Description				Top Depth (ftKB)		Bottom Depth (ftKB)
Shoe Plug				12.0		978.0
Description				Top Depth (ftKB)		Bottom Depth (ftKB)
Shoe Plug				978.0		1,028.0
Tubing Strings						
Tubing Description Tubing	Run Date 2/12/2007	String... 2 3/8	ID (in)	Wt (lb/ft) 4.70	Grade J-55	Len (ft) 6,732.00
Set De...						
Tubing Components						
Item Des	OD (in)	Wt (lb/ft)	Grade	Jts	Len (ft)	Btm (ftKB)
EUE 8rd Tubing	2 3/8	4.70	J-55	206	6,730.40	6,742.4
Notched collar	2 3/8				1.60	6,744.0
Btm (TVD) (ftKB)						
Other In Hole						
Run Date	Des			OD (in)	Top (ftKB)	Btm (ftKB)
12/14/2017	Cast Iron Bridge Plug			3.99	6,417.0	6,422.0
Logs						
Date	Type				Top, MD (ftKB)	Btm, MD (ftKB)
12/8/2006	COMPENSATED DENSITY				2,500.0	6,911.0
12/8/2006	INDUCTION				12.0	6,931.0
12/13/2006	CBL/CCL/GR				1,940.0	6,874.0
10/2/2015	GYRO				10.0	2,200.0
Perforation Data						
Linked Zone	Bnch/St g	Sum of Entered Shot Total	Top (ftKB)		Btm (ftKB)	Date
NIOBRARA, ORIGINAL HOLE	A	96	6,472.00		6,488.00	2/2/2007

**Well Name: THRALL USX AA19-11**

VERTICAL - ORIGINAL HOLE, 12/15/2017 10:33:56 AM



Perforation Data					
Linked Zone	Bnch/St g	Sum of Entered Shot Total	Top (ftKB)	Btm (ftKB)	Date
NIOBRARA, ORIGINAL HOLE	B	90	6,579.00	6,594.00	2/2/2007
CODELL, ORIGINAL HOLE		40	6,758.00	6,768.00	12/18/2006
Total (Sum)		226			
Stimulation Intervals					
Start Date 2/2/2007		Primary Job Type DRILLING/COMPLETION - ORIGINAL			
Technical Result		Tech Result Details		Tech Result Note	
Comment					
Start Date 2/2/2007		Primary Job Type DRILLING/COMPLETION - ORIGINAL			
Technical Result		Tech Result Details		Tech Result Note	
Comment					