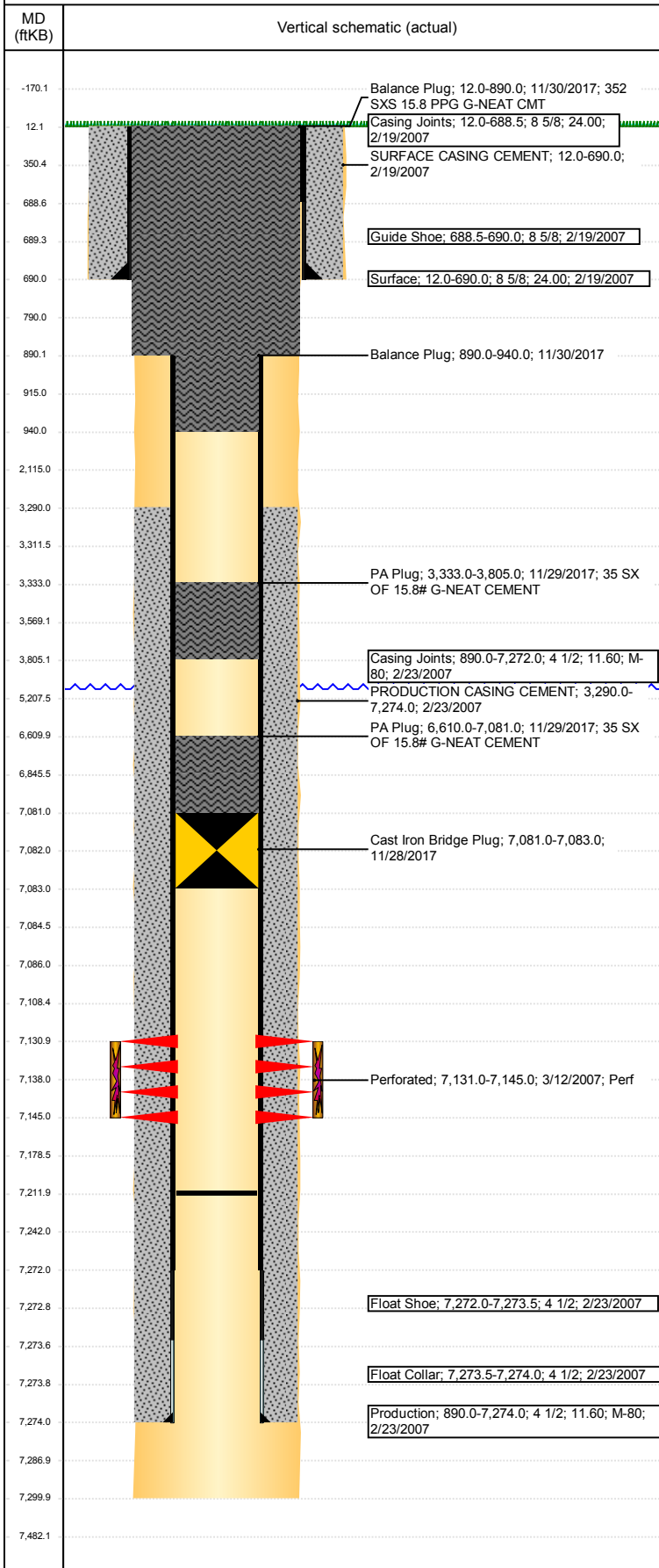


**Well Name: BOOTH USX EE25-23**

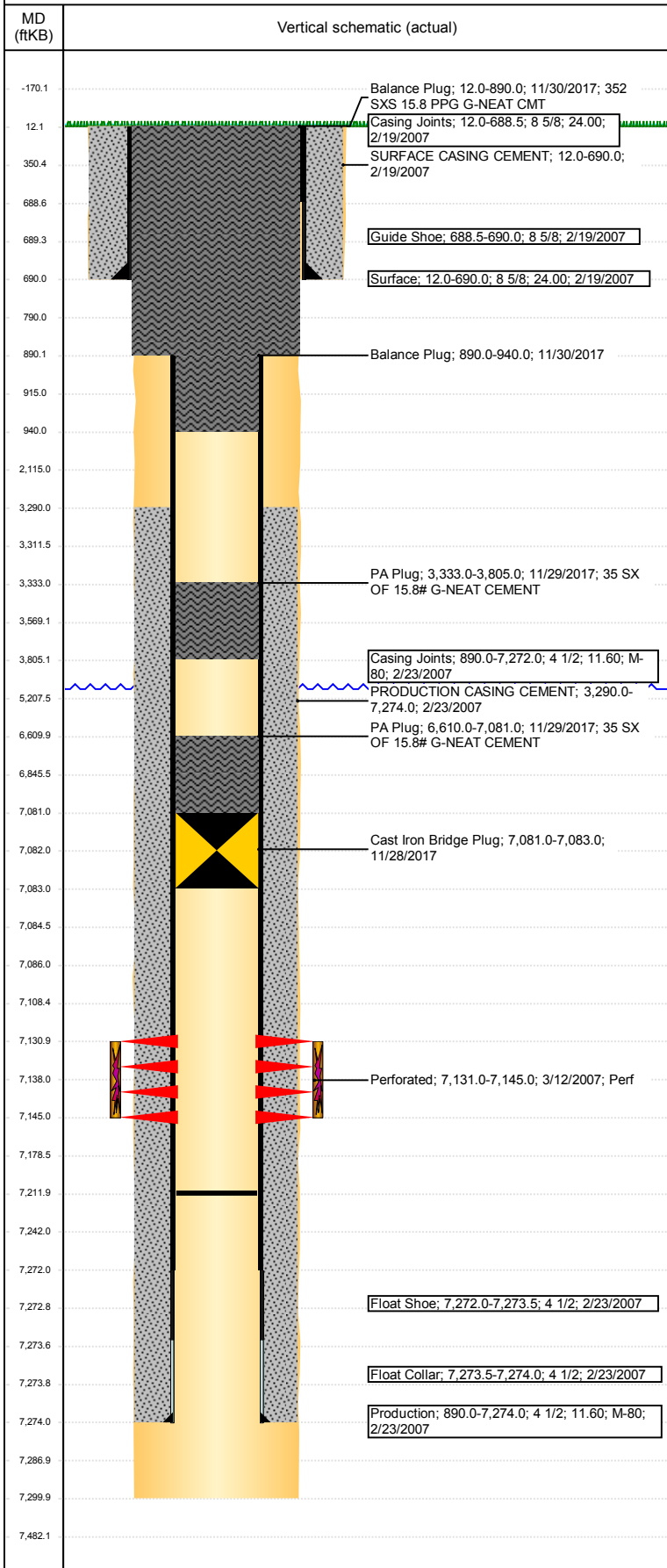
VERTICAL - ORIGINAL HOLE, 12/6/2017 3:55:45 PM



Well Header							
API 05-123-24718		Business Unit DJ BASIN		District 15		Well Config VERTICAL	
Original KB Elevation (ft) 4,862		KB - GL / MSL (ftKB) 12.00		Spud Date 2/19/2007		P & A Date 11/30/2017	
Comment							
Directions To Well							
Congressional Location							
Quarter 3 SE	Quarter 4 SE	Section 25	Township 7	Twonshp N/S Dir N	Range 65	Range E/W Dir W	
Bottom Hole Location							
North-South Distance (ft)		From N or S Line		East-West Distance (ft)		From E or W Line	
Plug Back Total Depths							
Date	Depth (ftKB)	Method			Com		
2/23/2007	7,258.0	CASING TALLY			TOP OF FLOAT COLLAR		
3/2/2007	7,212.0	CASED HOLE LOG			DEPTH LOGGER ON CBL		
Wellbore Sections							
Section Des		Size (in)		Act Top, MD (ftKB)		Act Btm, MD (ftKB)	
SURFACE		12 1/4		12		690	
PRODUCTION		7 7/8		690		7,300	
Zone Statuses							
Zone Name	Status Date	Status	Fluid Type	Job	Prod Method		
CODELL	4/9/2007	PR		DRILLING/CO...	Flowing		
CODELL	11/28/2017	P&A		ABANDON WE...			
Casing Strings							
Surface, 690.0ftKB							
Casing Description	Run Date	OD (in)	Wt/Len (l...	Grade	Top, MD (ft...	MD (ftKB)	
Surface	2/19/2007	8 5/8	24.00		12.0	690.0	
Production, 7,274.0ftKB							
Casing Description	Run Date	OD (in)	Wt/Len (l...	Grade	Top, MD (ft...	MD (ftKB)	
Production	2/23/2007	4 1/2	11.60	M-80	12.0	7,274.0	
Cement							
Description				Top Depth (ftKB)		Bottom Depth (ftKB)	
SURFACE CASING CEMENT				12.0		690.0	
Description				Top Depth (ftKB)		Bottom Depth (ftKB)	
PRODUCTION CASING CEMENT				3,290.0		7,274.0	
Description				Top Depth (ftKB)		Bottom Depth (ftKB)	
PA Plug				6,610.0		7,081.0	
Description				Top Depth (ftKB)		Bottom Depth (ftKB)	
PA Plug				3,333.0		3,805.0	
Description				Top Depth (ftKB)		Bottom Depth (ftKB)	
Balance Plug				890.0		940.0	
Description				Top Depth (ftKB)		Bottom Depth (ftKB)	
Balance Plug				12.0		890.0	
Tubing Strings							
Tubing Description	Run Date	String...	ID (in)	Wt (lb/ft)	Grade	Len (ft)	Set De...
Tubing - Production	3/12/2007	2 3/8	2.00	4.70	J-55	7,103.70	
Tubing Components							
Item Des	OD (in)	Wt (lb/ft)	Grade	Jts	Len (ft)	Btm (ftKB)	Btm (TVD) (ftKB)
Tubing	2 3/8	4.70	J-55	231	7,101.70	7,113.7	
Notched collar	2 3/8				1.50	7,115.2	
Pump Seating	2 3/8	1.10			0.50	7,115.7	
Nipple							
Other In Hole							
Run Date	Des			OD (in)	Top (ftKB)	Btm (ftKB)	
8/17/2017	Cast Iron Bridge Plug			3.99	7,081.0	7,086.0	
11/28/2017	Cast Iron Bridge Plug			3.99	7,081.0	7,083.0	
Logs							
Date	Type				Top, MD (ftKB)	Btm, MD (ftKB)	
2/23/2007	COMPENSATED DENSITY				2,600.0	7,267.0	
2/23/2007	INDUCTION				690.0	7,287.0	
3/2/2007	CEMENT BOND				3,200.0	7,211.0	
10/25/2017	GYRO				12.0	7,000.0	

**Well Name: BOOTH USX EE25-23**

VERTICAL - ORIGINAL HOLE, 12/6/2017 3:55:46 PM



Perforation Data					
Linked Zone	Bnch/St g	Sum of Entered Shot Total	Top (ftKB)	Btm (ftKB)	Date
CODELL, ORIGINAL HOLE		56	7,131.00	7,145.00	3/12/2007
Total (Sum)		56			
Stimulation Intervals					
Start Date 3/23/2007		Primary Job Type DRILLING/COMPLETION - ORIGINAL			
Technical Result		Tech Result Details		Tech Result Note	
Comment CODELL					