

HALLIBURTON

iCem[®] Service

TERRA ENERGY PARTNERS

For: Terra

Date: Wednesday, October 04, 2017

GM 323-4 Surface

API#05-045-23506

Sincerely,
Grand Junction Cement Engineering

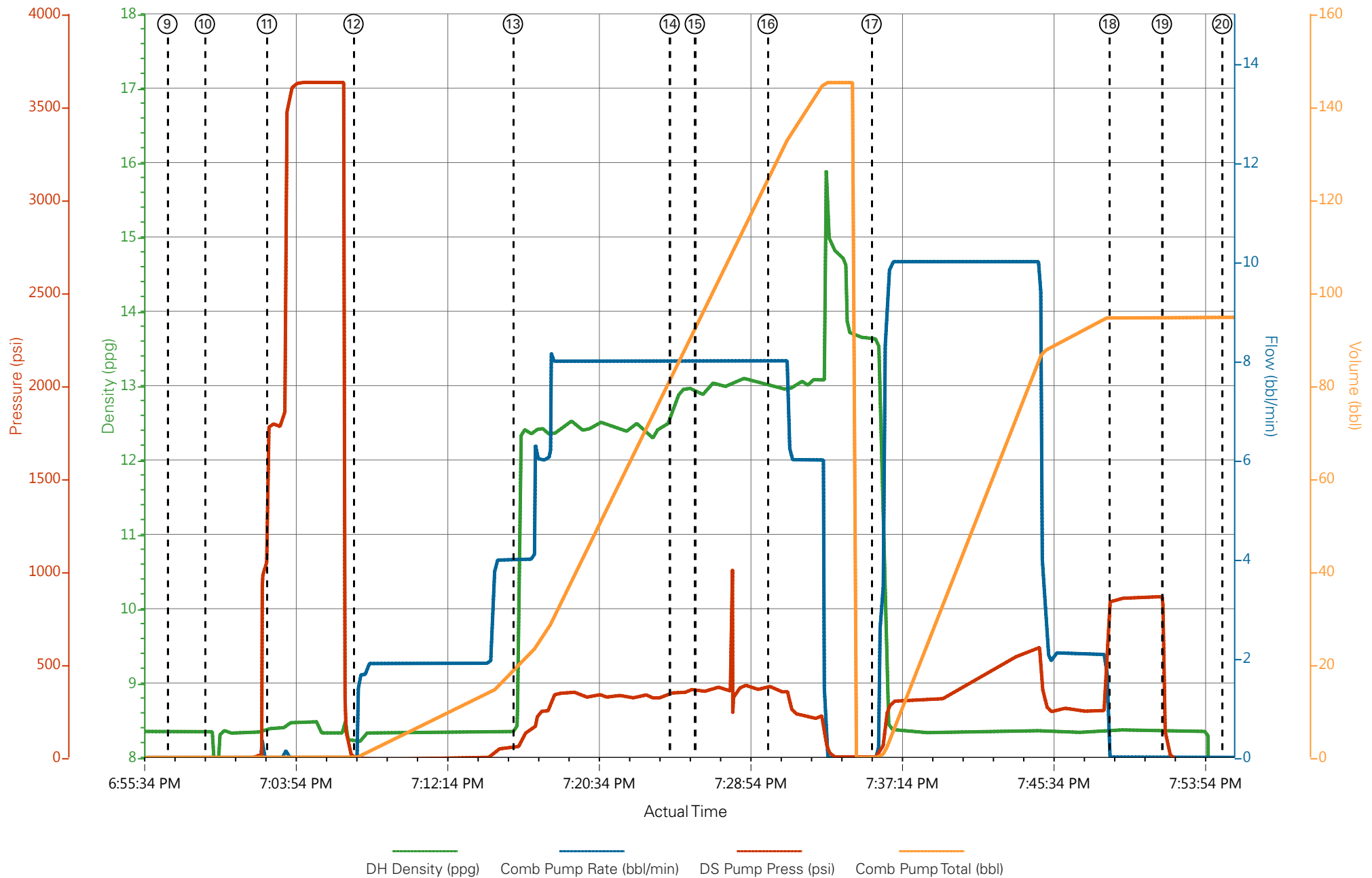
2.0 Real-Time Job Summary

2.1 Job Event Log

Type	Seq. No.	Graph Label	Date	Time	Source	Downhole Density (ppg)	Combined Pump Rate (bbl/min)	Driv-Side Pump Pressure (psi)	Combined Pump Total (bbl)	Comments
Event	1	Call Out	10/4/2017	13:00:00	USER					CALL OUT @ 1300 REQUESTED ON LOCATION @ 1800
Event	2	Pre-Convoy Safety Meeting	10/4/2017	16:00:00	USER					
Event	3	Crew Leave Yard	10/4/2017	16:30:00	USER					1 Elite, 1 660, 1 pickup
Event	4	Arrive At Loc	10/4/2017	17:45:00	USER					RIG ON BOTTOM WITH CASING, WORKORDER SIGNED
Event	5	Assessment Of Location Safety Meeting	10/4/2017	18:00:00	USER					JSA completed - Customer offered/received SDS - water test pH 7.0, CI Under 200, temp 58 degrees
Event	6	Pre-Rig Up Safety Meeting	10/4/2017	18:10:00	USER					
Event	7	Rig-up Lines	10/4/2017	18:15:00	USER					ONE HARD LINE TO RIG FLOOR, BULK TRUCK TO PUMP, AND H2O HOSE TO WATER TANK
Event	8	Pre-Job Safety Meeting	10/4/2017	18:20:00	USER					ALL HES, ALL RIG PERSONEL, AND CUSTOMER REP
Event	9	Start Job	10/4/2017	18:57:00	COM7					TD 1274', TP 1264', 13.5" OH, 9 5/8" CSG, 41' SJ, 9.3 PPG MUD
Event	10	FILL LINES	10/4/2017	18:59:03	COM7	8.33	2	30	3	FRESH WATER
Event	11	Test Lines	10/4/2017	19:02:28	COM7			3680		HELD PRESSURE FOR 3 MIN NO LEAKS
Event	12	Pump Spacer 1	10/4/2017	19:07:13	COM7	8.33	4	180	18	20 BBL FRESH WATER SPACER
Event	13	Pump Lead Cement	10/4/2017	19:16:00	COM7	12.3	8	400	57.2	135 SKS 12.3PPG, 2.38 YEILD, 13.77 GAL/SK
Event	14	Pump Tail Cement	10/4/2017	19:24:37	COM7	12.8	8	430	65.8	175 SKS 12.8PPG, 2.38 YEILD, 11.78 GAL/SK
Event	15	SHUT DOWN	10/4/2017	19:26:00	USER					
Event	16	DROP TOP PLUG	10/4/2017	19:30:00	USER					SWAP IRON TO TOP PORT OF CEMENT HEAD TO POSITIVE DISPLACE PLUG

Event	17	Pump Displacement	10/4/2017	19:35:43	COM7	8.33	10	600		FRESH WATER
Event	18	Bump Plug	10/4/2017	19:48:47	USER	8.33	2	870	96.6	PLUG BUMPED @ 270 PSI BROUGHT UP TO 870 PSI
Event	19	Check Floats	10/4/2017	19:51:40	USER					.5 BBL BACK TO TRUCK FLOATS HELD
Event	20	END JOB	10/4/2017	19:55:00	USER					GOOD RETURNS THROUGHOUT JOB 18 BBL OF CEMENT TO SURFACE
Event	21	Pre-Rig Down Safety Meeting	10/4/2017	19:58:13	USER					
Event	22	Pre-Convoy Safety Meeting	10/4/2017	20:36:54	USER					
Event	23	CREW LEAVE LOCATION	10/4/2017	21:00:00	USER					THANK YOU FOR USING HALLIBURTON CHRIS MARTINEZ AND CREW

GM 323-4 9 5/8" SURFACE



① Call Out n/a;n/a;n/a;n/a	⑤ Assessment Of Location Safety Meeting n/a;n/a;n/a;n/a	⑨ Start Job 8.35;0;-1;0	⑬ Pump Lead Cement 8.34;4;48;19.3	⑰ Pump Displacement 13.63;0
② Pre-Convoy Safety Meeting n/a;n/a;n/a;n/a	⑥ Pre-Rig Up Safety Meeting 0.01;0;209;0	⑩ FILL LINES 8.35;0;-1;0	⑭ Pump Tail Cement 12.66;8;354;82.5	⑱ Bump Plug 8.37;0;846;94.7
③ Crew Leave Yard n/a;n/a;n/a;n/a	⑦ Rig-up Lines 0.02;0;202;0	⑪ Test Lines 8.4;0;1794;0	⑮ SHUT DOWN 12.91;8;370;93.6	⑲ Check Floats 8.35;0;123;94.7
④ Arrive At Loc n/a;n/a;n/a;n/a	⑧ Pre-Job Safety Meeting 0.02;0;203;0	⑫ Pump Spacer 1 8.23;0;-8;0	⑯ DROPTOP PLUG 13.01;8;373;125.7	⑳ END JOB -0.13;0;-16;94.7

GM 323-4 9 5/8" SURFACE

