

HALLIBURTON

iCem[®] Service

TEP ROCKY MOUNTAIN LLC

For: Terra

Date: Sunday, October 08, 2017

GM 323-4 Production

API#05-045-23506

Sincerely,
Grand Junction Cement Engineering

2.0 Real-Time Job Summary

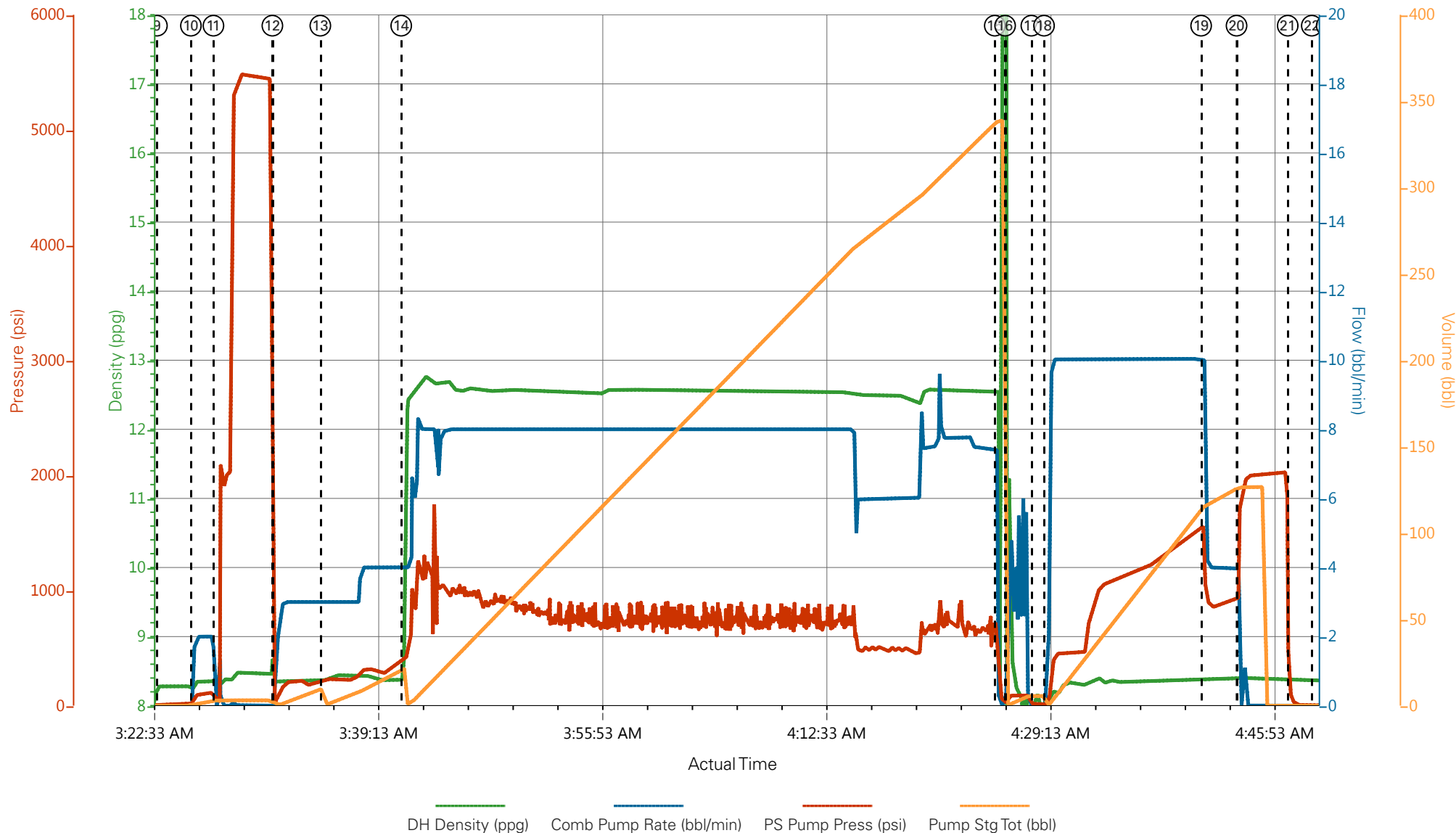
2.1 Job Event Log

| Type | Seq. No. | Graph Label | Date | Time | Source | DH Density (ppg) | Comb Pump Rate (bbl/min) | PS Pump Press (psi) | Pump Stg Tot (bbl) | Comments |
|-------|----------|---------------------------------------|-----------|----------|--------|---------------------|-----------------------------|------------------------|-----------------------|----------------------------------------------------------------------------------------------------------------------------------------------------------------------------------------|
| Event | 1 | Call Out | 10/7/2017 | 15:00:00 | USER | | | | | ELITE #8, REQUESTED ON LOCATION TIME 2100 |
| Event | 2 | Pre-Convoy Safety Meeting | 10/7/2017 | 17:00:00 | USER | | | | | ALL HES EMPLOYEES |
| Event | 3 | Arrive At Loc | 10/7/2017 | 19:00:00 | USER | | | | | ARRIVED ON LOCATION 2 HOURS EARLY, RIG RUNNING CASING |
| Event | 4 | Meet With Company Rep | 10/7/2017 | 19:15:00 | USER | | | | | COMPANY REP OFFERED SDS / WATER TEST: TEMP: 53 PH: 7 CHLORIDES: 0 |
| Event | 5 | Assessment Of Location Safety Meeting | 10/7/2017 | 19:55:00 | USER | | | | | ALL HES EMPLOYEES |
| Event | 6 | Pre-Rig Up Safety Meeting | 10/7/2017 | 20:00:00 | USER | | | | | ALL HES EMPLOYEES |
| Event | 7 | Rig-Up Equipment | 10/7/2017 | 20:05:00 | USER | | | | | 1 HT-400 PUMP TRUCK 1 660 BULK TRUCK 1 SILO 1 F-550 PICKUP |
| Event | 8 | Pre-Job Safety Meeting | 10/7/2017 | 23:45:00 | USER | | | | | ALL HES EMPLOYEES AND RIG CREW RIG LOST RETURNS WHEN THE Y LANDED CSG. RIG THEN CIRCULATED 2 BOTTOMS UP ONCE THEY REGAINED RETURNS PRIOR TO THE JOB @ 465 GPM GAS @ 200 PRIOR STARTING |
| Event | 9 | Start Job | 10/8/2017 | 03:23:00 | COM5 | | | | | TD 7785', TP 7779.63', SJ 30.3', SURFACE SHOE AT 1274', CASING 4.5" 11.6# P110, OH: 8.75", MUD WEIGHT 9.9 PPG. |
| Event | 10 | Prime Lines | 10/8/2017 | 03:25:31 | USER | 8.33 | 2.0 | 150 | 3.0 | PRIME LINES WITH 3 BBLS FRESH WATER |
| Event | 11 | Test Lines | 10/8/2017 | 03:27:12 | COM5 | 8.33 | 0.0 | 5500 | 3.0 | 5500 PSI. PRESSURE HELD. |
| Event | 12 | Pump Fresh Water Spacer | 10/8/2017 | 03:31:35 | COM5 | 8.33 | 3.0 | 235 | 10 | PUMP 10 BBL FRESH WATER SPACER |
| Event | 13 | Pump Mud Flush III Spacer | 10/8/2017 | 03:35:09 | COM5 | 8.4 | 4.0 | 380 | 20 | PUMP 20 BBL MUD FLUSH II SPACER |
| Event | 14 | Pump Cement | 10/8/2017 | 03:41:10 | COM5 | 12.5 | 8.0 | 1200 | 309 | 885 SKS. 12.5 PPG, 1.96 YIELD, 9.38 GAL/SK, CEMENT WEIGHT |

VERIFIED VIA PRESSURIZED MUD SCALES

| | | | | | | | | | | |
|-------|----|-----------------------------|-----------|----------|------|------|------|------|-------|--------------------------------------------------------------------------------------------------------------------------------------------------------------------|
| Event | 15 | Shutdown | 10/8/2017 | 04:25:18 | USER | | | | | SHUTDOWN TO CLEAN PUMPS AND LINES |
| Event | 16 | Clean Lines | 10/8/2017 | 04:26:04 | COM5 | 8.33 | | | 10 | CLEAN PUMPS AND LINES TO WASH UP TROUGH |
| Event | 17 | Drop Top Plug | 10/8/2017 | 04:28:02 | COM5 | | | | | PLUG AWAY NO PROBLEMS USED POSITIVE DISPLACEMENT. COMPANY REP PROVIDED LATCHDOWN PLUG |
| Event | 18 | Pump Displacement | 10/8/2017 | 04:28:58 | COM5 | 8.4 | 10.0 | 1575 | 120.1 | 1 GAL MMCR 3#S BE-6 12 BAGS KCL, FRESH WATER DISPLACEMENT |
| Event | 19 | Slow Rate | 10/8/2017 | 04:40:39 | USER | 8.4 | 4.0 | 950 | 110 | SLOW RATE TO BUMP PLUG |
| Event | 20 | Bump Plug | 10/8/2017 | 04:43:17 | COM5 | 8.4 | 4.0 | 2028 | 120.1 | PSI BEFORE BUMPING PLUG @ 950 BUMPED PLUG UP TO 2028 PSI |
| Event | 21 | Check Floats | 10/8/2017 | 04:47:06 | USER | | | | | FLOATS HELD - 1 BBL BACK TO DISPLACEMENT TANKS |
| Event | 22 | End Job | 10/8/2017 | 04:48:53 | COM5 | | | | | LOST RETURNS WITH 150 BBLS OF CEMENT PUMPED AND DIDNT REGAIN RETURNS UNTIL 50 BBLS PUMPED ON DISPLACEMENT - LOST APPROX 200 BBLS. PIPE RECIPROCATED THROUGHOUT JOB |
| Event | 23 | Pre-Rig Down Safety Meeting | 10/8/2017 | 04:50:00 | USER | | | | | ALL HES EMPLOYEES |
| Event | 24 | Rig-Down Equipment | 10/8/2017 | 04:55:00 | USER | | | | | |
| Event | 25 | Pre-Convoy Safety Meeting | 10/8/2017 | 05:50:00 | USER | | | | | ALL HES EMPLOYEES |
| Event | 26 | Crew Leave Location | 10/8/2017 | 06:00:00 | USER | | | | | THANK YOU FOR USING HALLIBURTON CEMENT, DUSTIN SMITH AND CREW |

TEP - GM 323-4 - 4 1/2 PRODUCTION



- | | | | | |
|-----------------------------------------|---------------------------|-----------------------------|--------------------------------|------------------------------|
| ① Call Out | ⑦ Rig-Up Equipment | ⑬ Pump Mud Flush III Spacer | ⑲ Slow Rate | 25 Pre-Convoy Safety Meeting |
| ② Pre-Convoy Safety Meeting | ⑧ Pre-Job Safety Meeting | ⑭ Pump Cement | 20 Bump Plug | 26 Crew Leave Location |
| ③ Arrive At Loc | ⑨ Start Job | ⑮ Shutdown | 21 Check Floats | |
| ④ Meet With Company Rep | ⑩ Prime Lines | ⑯ Clean Lines | 22 End Job | |
| ⑤ Assessment Of Location Safety Meeting | ⑪ Test Lines | ⑰ Drop Top Plug | 23 Pre-Rig Down Safety Meeting | |
| ⑥ Pre-Rig Up Safety Meeting | ⑫ Pump Fresh Water Spacer | ⑱ Pump Displacement | 24 Rig-Down Equipment | |

▼ **HALLIBURTON** | iCem® Service

Created: 2017-10-07 15:24:58, Version: 4.2.393

Edit

Customer: TEP ROCKY MOUNTAIN LLC
Representative: GARRETT WADE

Job Date: 10/7/2017 10:19:59 PM
Sales Order #: 0904349551

Well: GM 323-4
ELITE# 8: DUSTIN SMITH / TRAVIS BROWN

TEP - GM 323-4 - 4 1/2 PRODUCTION

