



		(in)			(in)		(ft)	(ft)	(ft)	(ft)		(in)
1	1	7.875	PDC	2.00	Steerable	6400.00	12192.00	1887.00	12232.00	2017-09-30 12:12	2017-10-02 10:49	38.42

Crew

Name	Arrive Wellsite	Depart Wellsite	Name	Arrive Wellsite	Depart Wellsite	Name	Arrive Wellsite	Depart Wellsite
John Mason	2017-09-30	2017-10-02	Teni Onafowokan	2017-09-30	2017-10-02			

Mud Properties Record

Date / Time	Run No.	Measured Depth (ft)	Mud Type	Density (ppg)	Viscosity (cP)	pH	Fluid Loss (cm3)	Oil / Water	Source	Total Chlorides (ppm)	K+ (%)
2017-09-30 05:48	1	1887.00	Diesel-Oil Based Mud	9.6	21	N/A	N/A	73.1/26.9	Active Pit	34000	0.00
2017-09-30 19:28	1	3959.77	Diesel-Oil Based Mud	9.3	20	N/A	N/A	74/26	Active Pit	32819	0.00
2017-10-01 21:13	1	9163.98	Diesel-Oil Based Mud	9.0	18	N/A	N/A	73.3/26.7	Active Pit	30888	0.00

Equipment and Service Data

Run No.	Tool	Serial Number	Measurement	Sensor Offset (ft)	Bit Offset (ft)	Max O.D. (in)	Min I.D. (in)
1	NaviGamma	12041109	Gamma (single)	9.55	40.09	6.500	3.250
1	NaviGamma	13225709	VSS	12.97	43.51	6.500	3.250
1	NaviGamma	13225709	Directional (mag)	12.97	43.51	6.500	3.250

Service and Tool Mnemonics

Mnemonic	Name	Description
GAM	NaviGamma	Probe Based Gamma Module, NaviTrak Platform

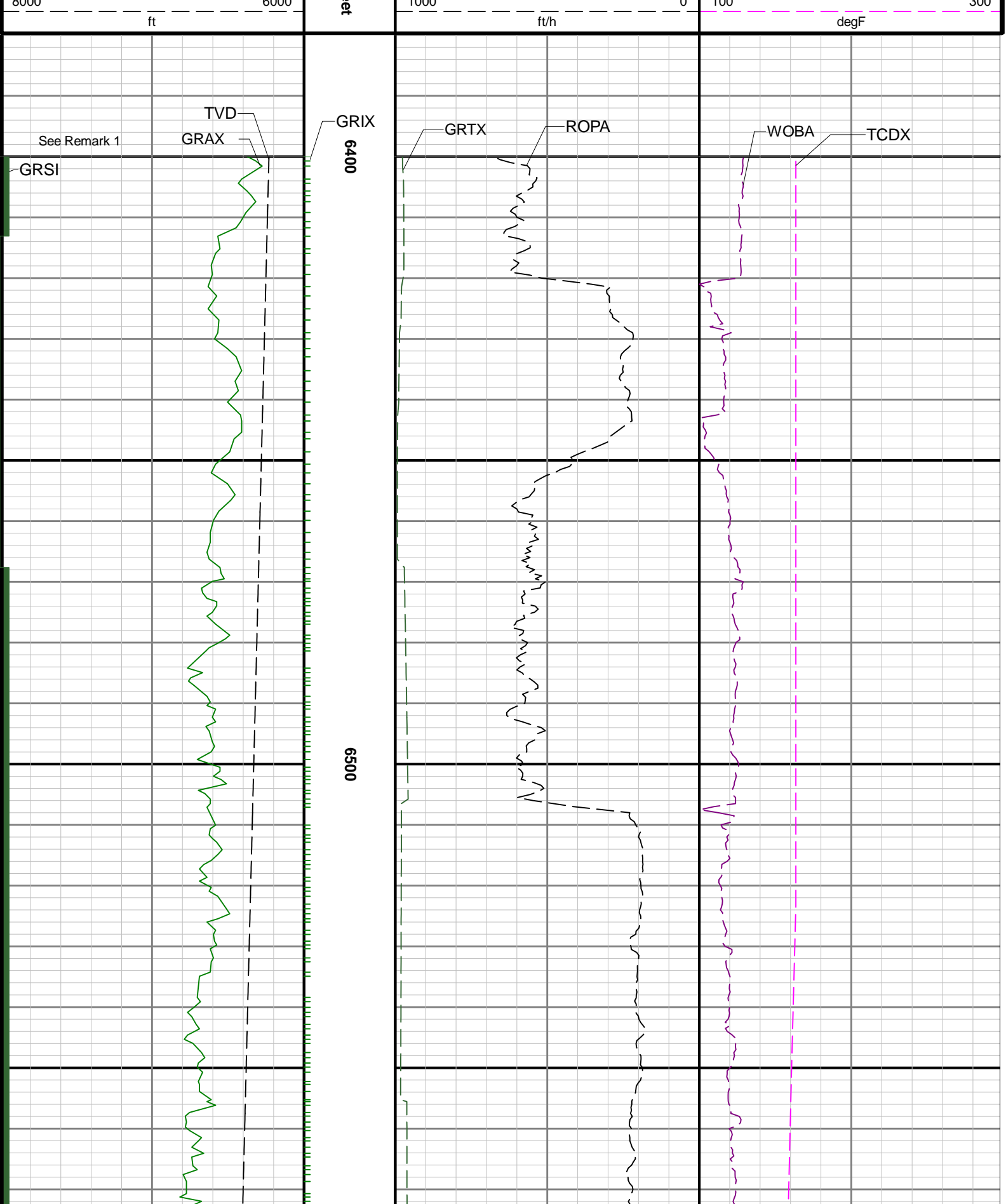
Comments

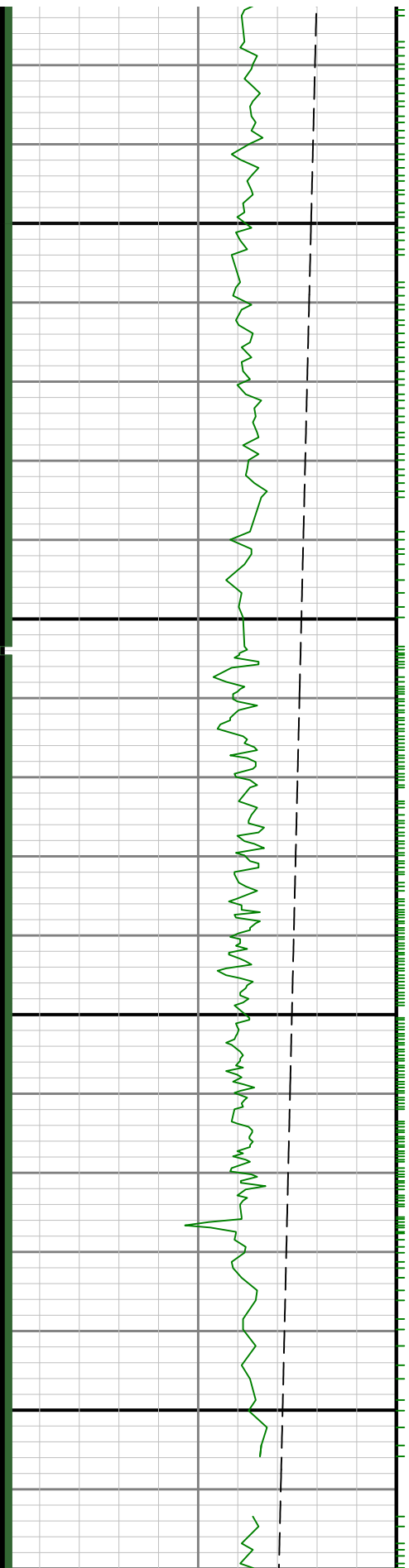
1	Depth measurements were obtained from a depth control system not supplied or operated by Baker Hughes. Due to the lack of control by Baker Hughes logging engineers, depth calibrations and measurements could not be independently verified.
2	A sliding indicator is shown to the left edge of track 1 as a heavy line. The indicator has been depth-shifted to the Gamma Ray sensor offset to correspond with Gamma Ray data acquired while sliding.
3	Baker Hughes run 1 utilized 6.50 inch NaviGamma services (Gamma Ray and Directional) behind a 7 7/8 inch bit and steerable assembly from 1887 to 12232 feet MD (1836 to 7105 feet TVD).
4	Numerous gaps are present throughout the log due to surveying while on bottom drilling ahead.
5	Gamma Ray (GRAX) scale is presented 0 to 200 API per customer request.

Remarks

Number	Measured Depth (ft)	Hole Section (in)	Run No.	Remark
1	6400.00	7.875	1	Baker Hughes logging services began 6400 feet MD (6230 feet TVD) per customer request.
2	12200.00	7.875	1	The interval from 12192 to 12232 feet MD (7105 feet TVD) was not logged due to sensor to bit offset at end of well TD.

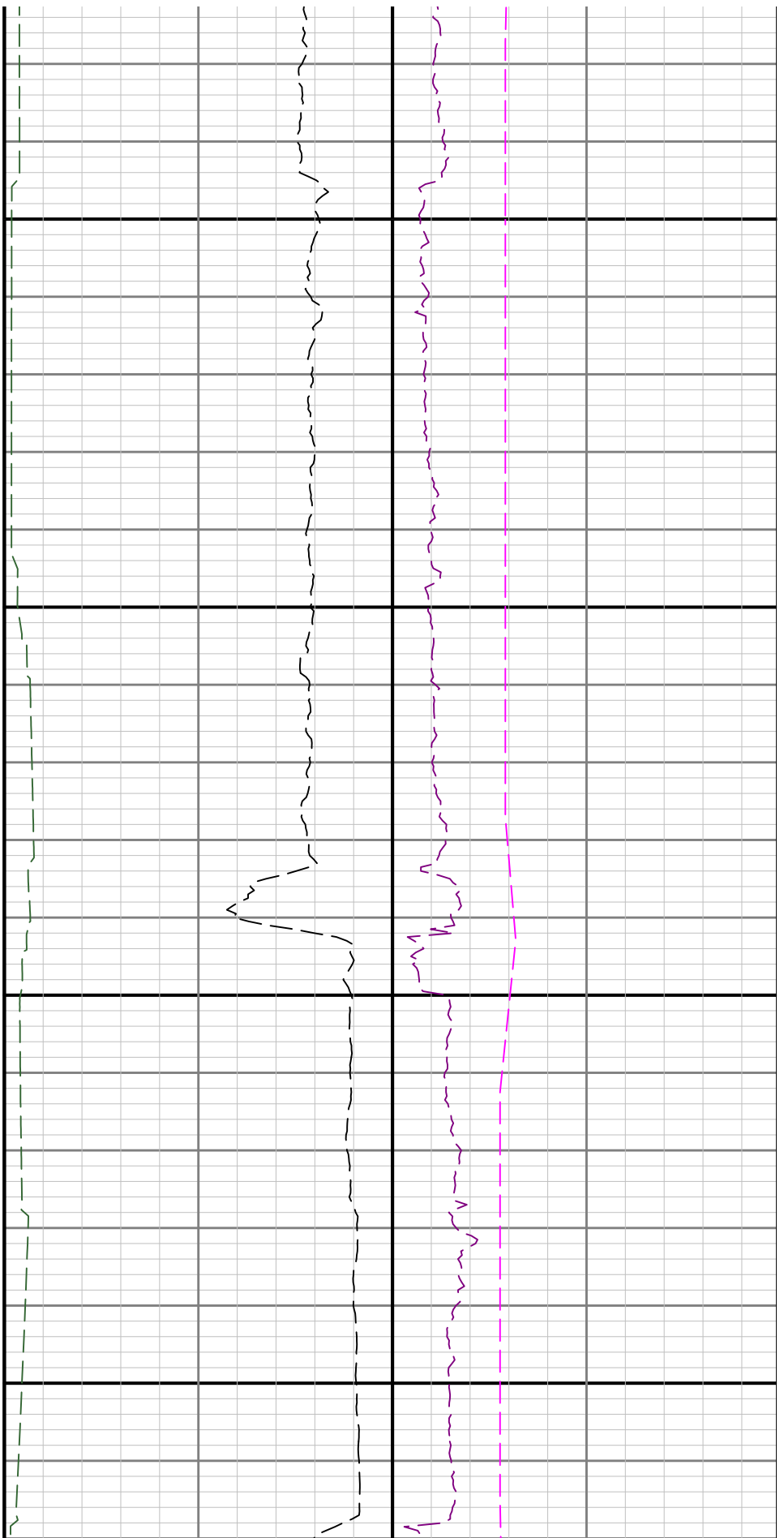
Gamma Ray - Apparent 0.5 ft Average [GRAX]		MD 1:240 feet	Gamma Time Since Drilled [GRTX]		Weight On Bit, Average 1 ft Average [WOBA]	
0	200		0	600	0	100
API			min		klb	
True Vertical Depth [TVD]			Depth Averaged ROP 3 ft Average [ROPA]		Downhole Temperature [TCDX]	
8000	6000		1000	0	100	300

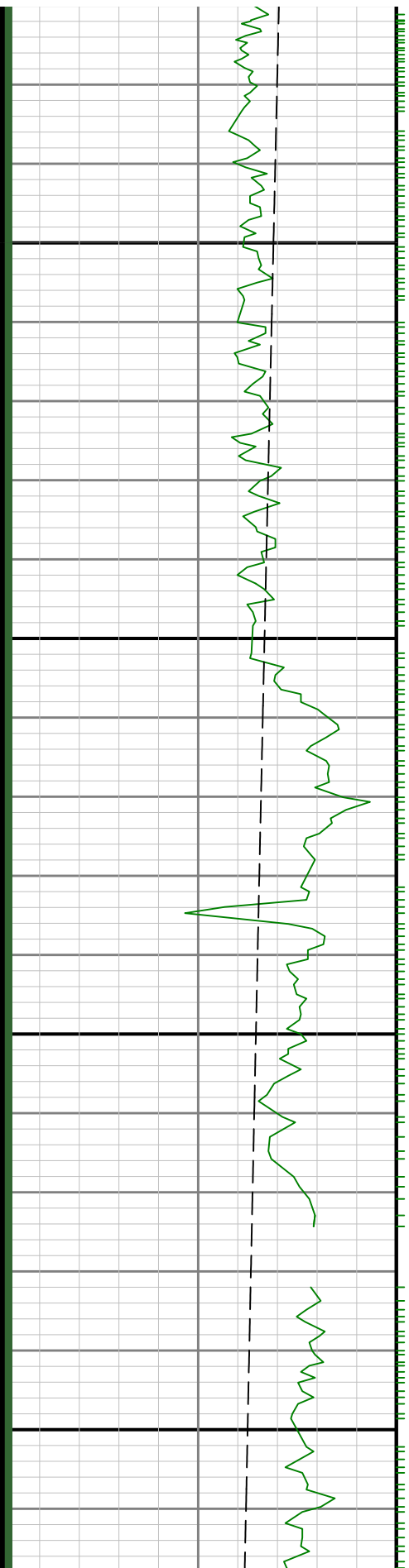




0099

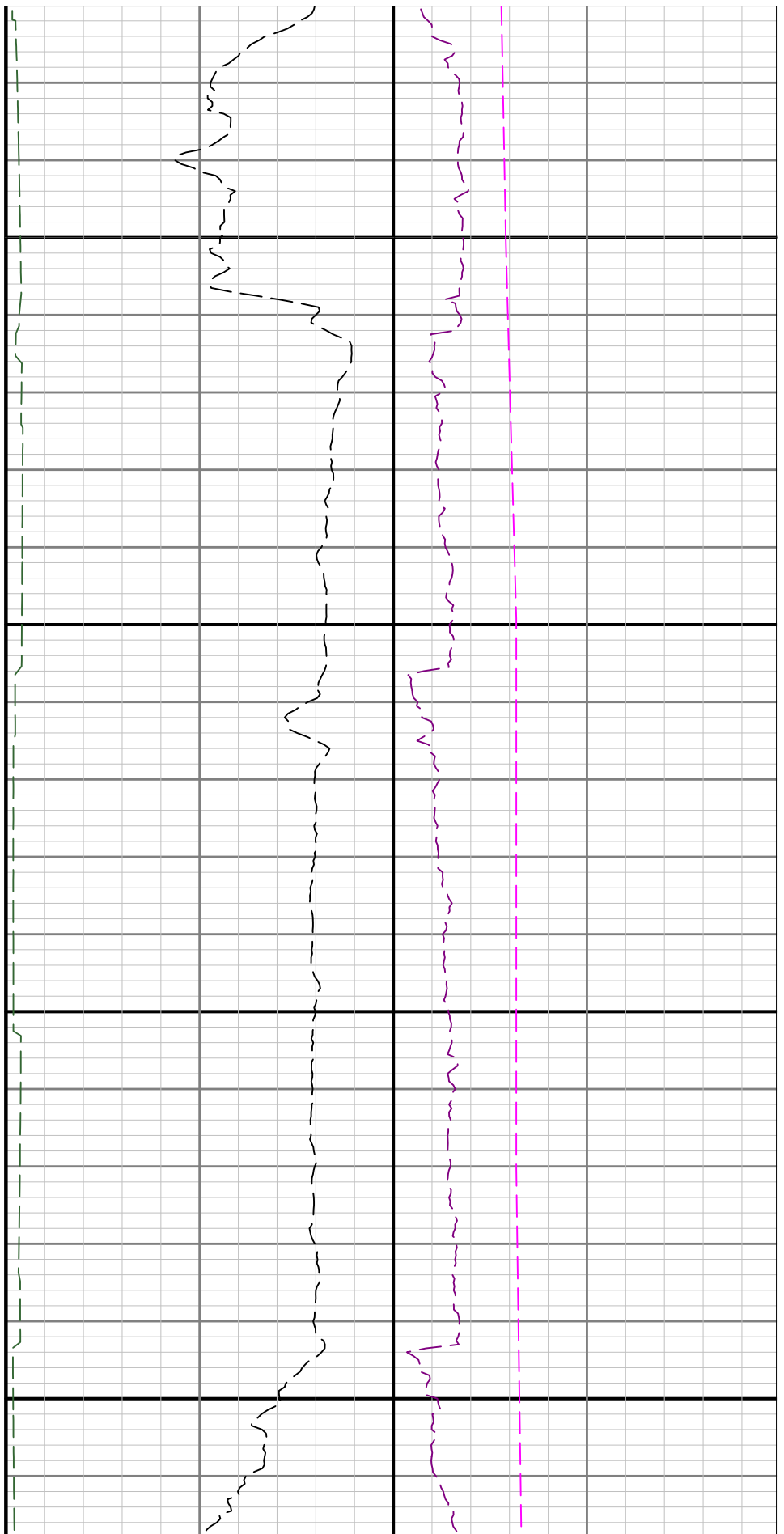
6700

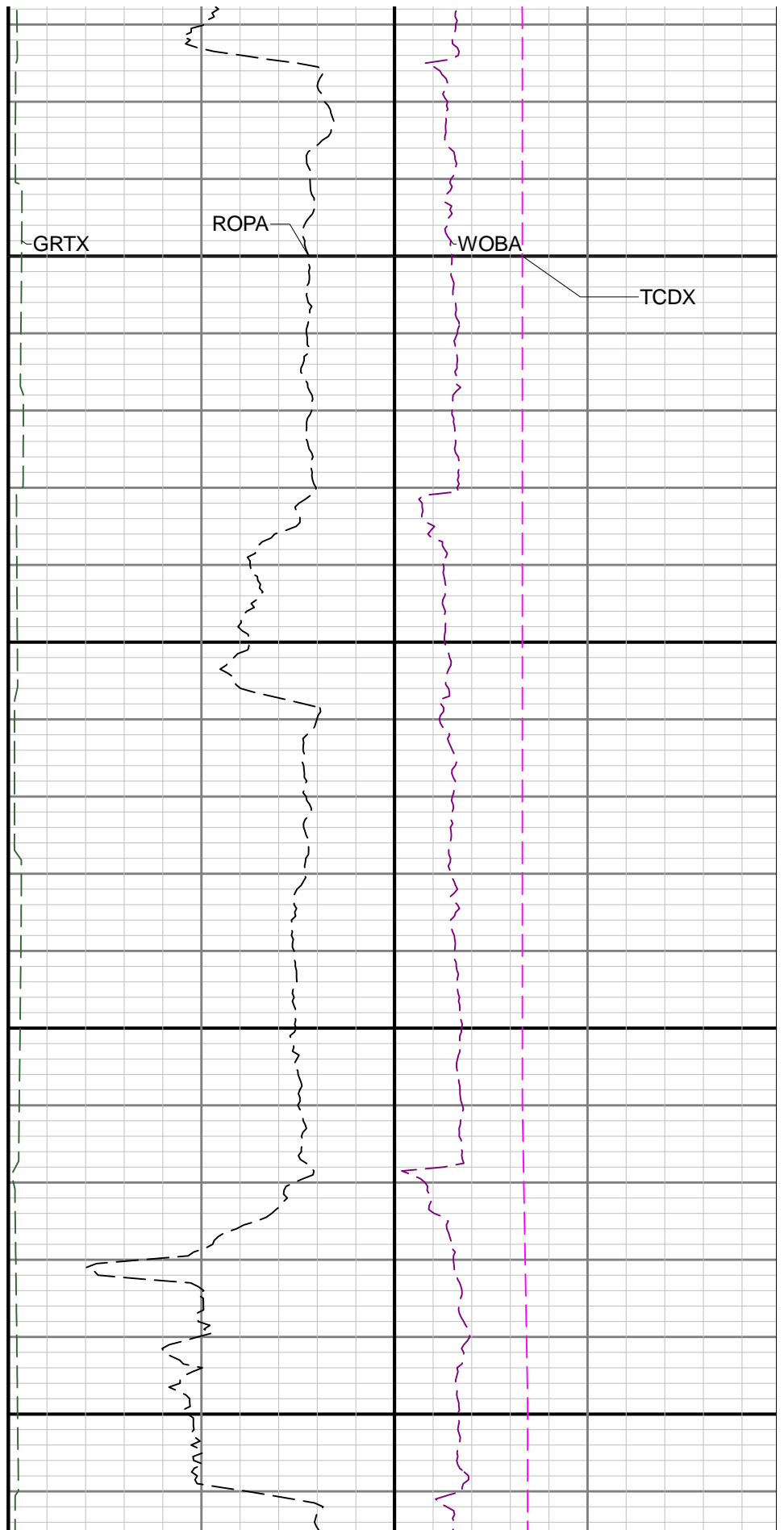
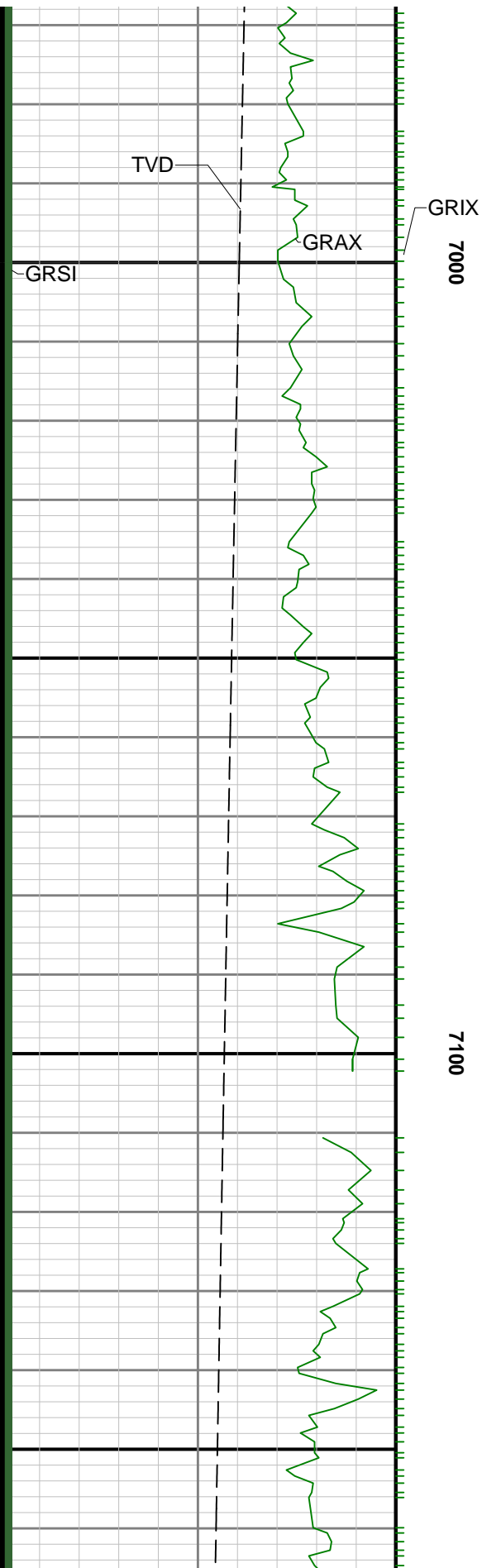


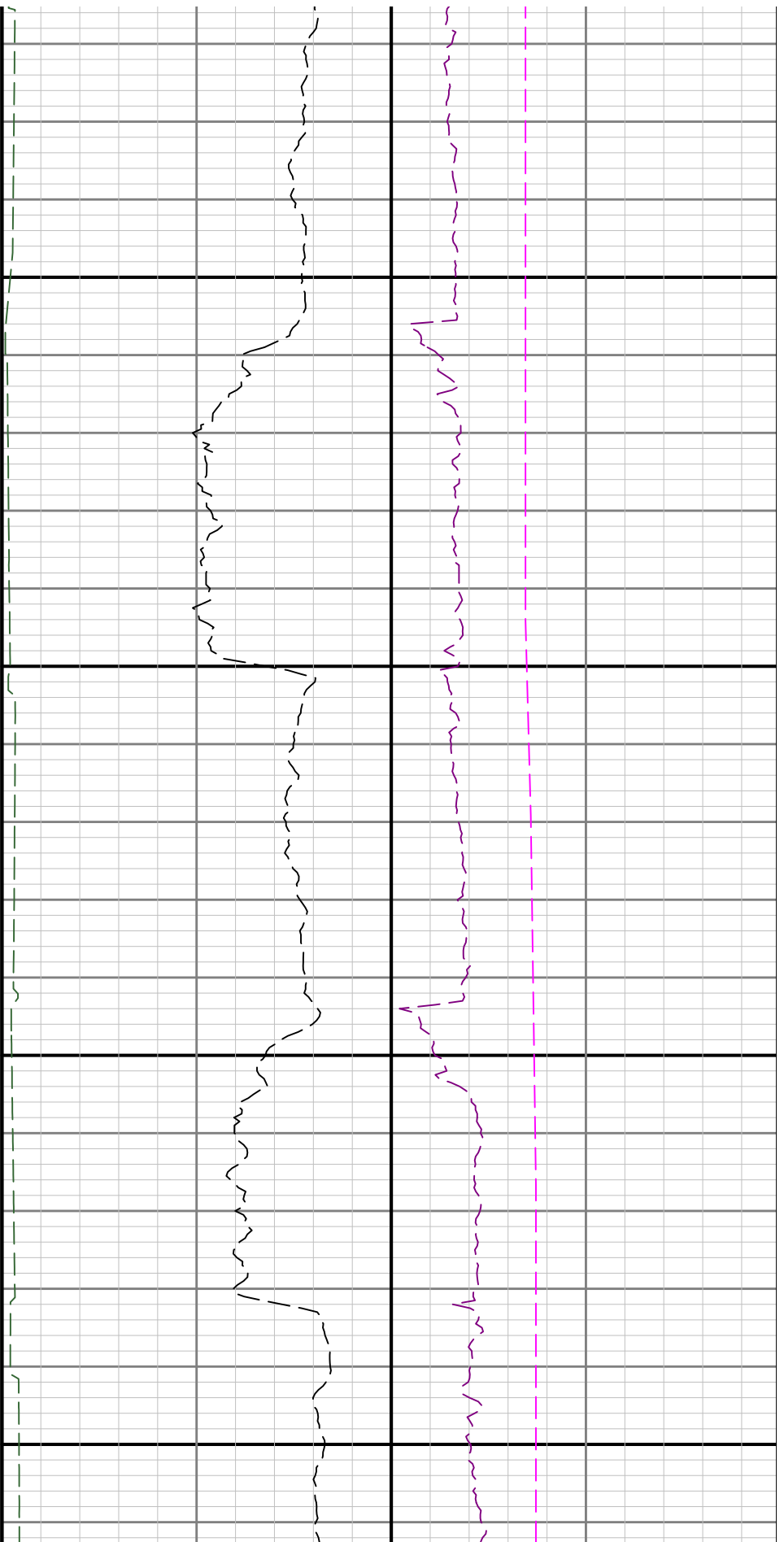


0069

0089

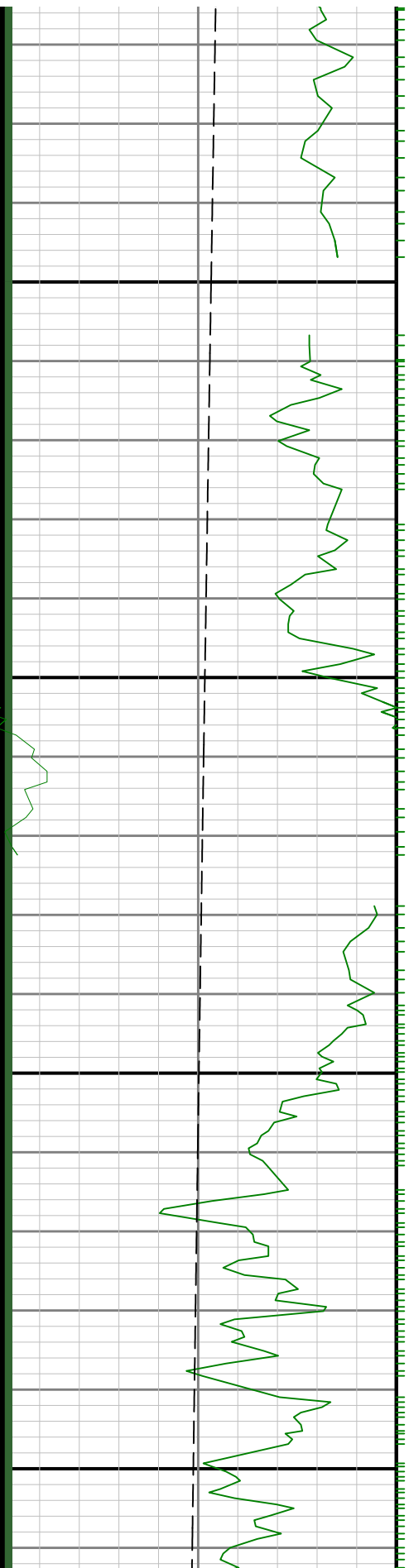


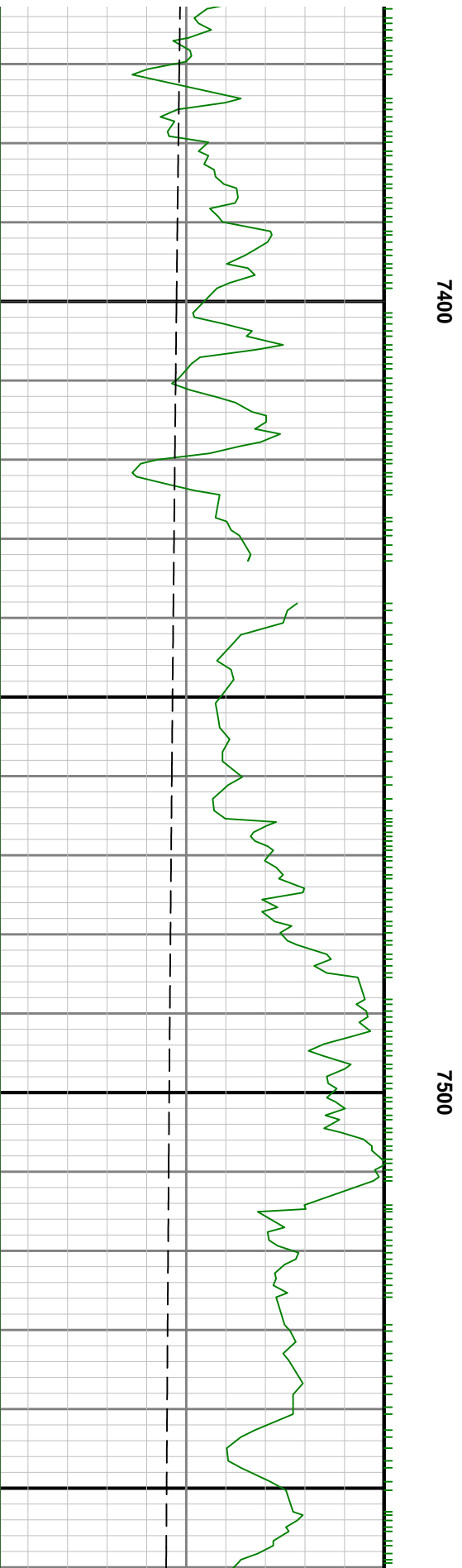
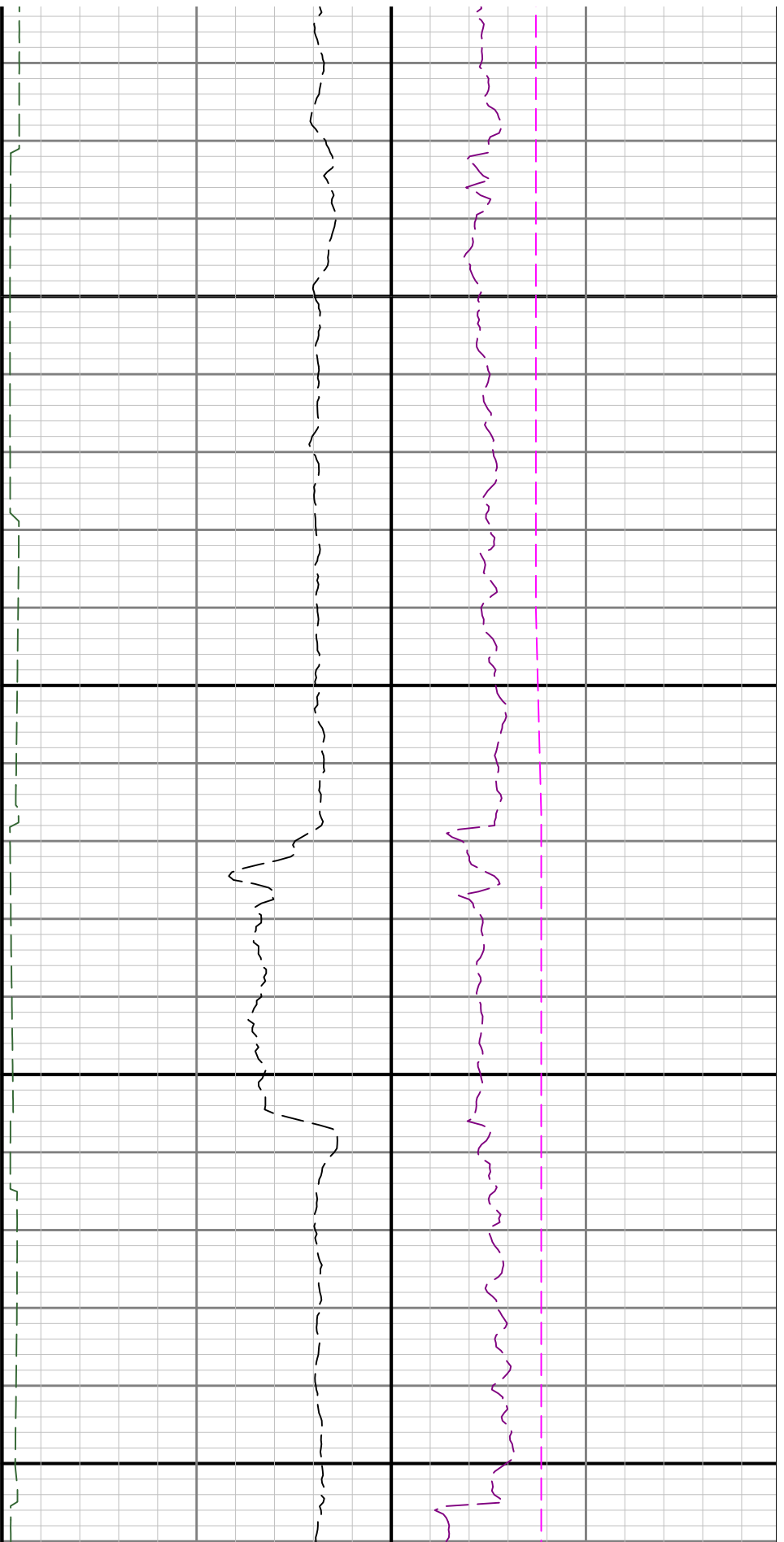




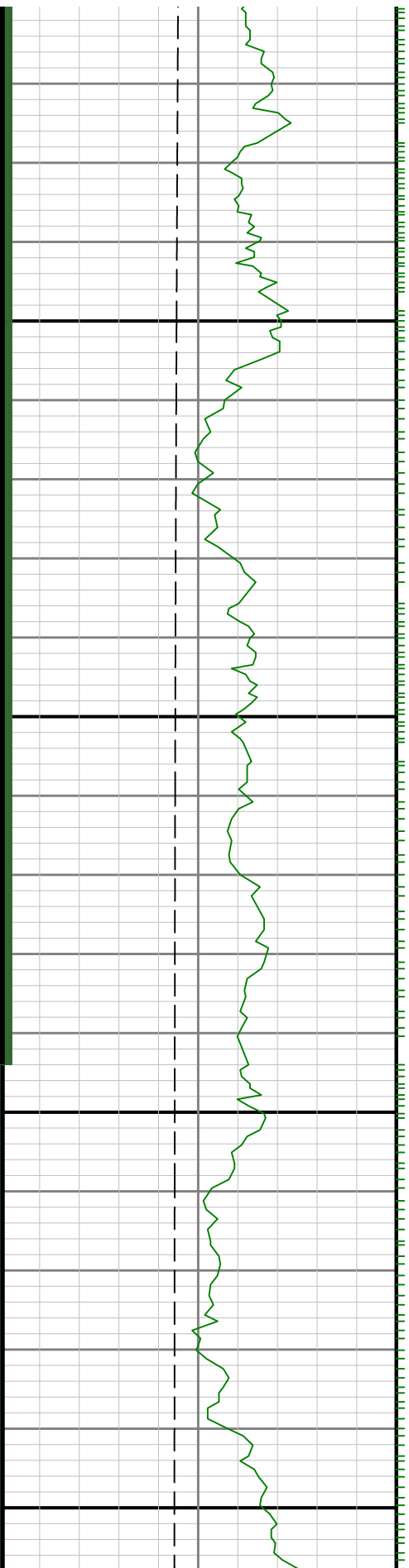
7200

7300



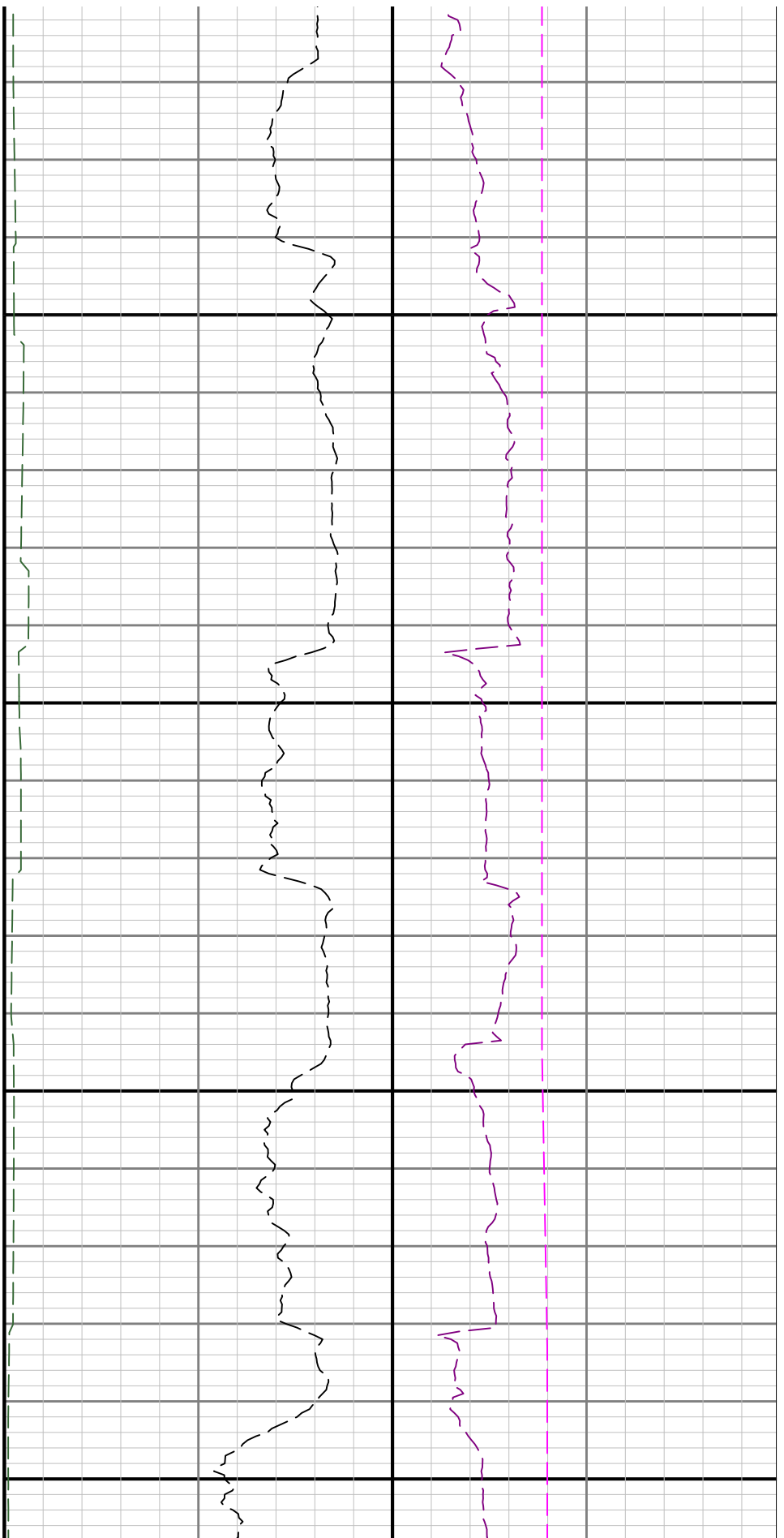


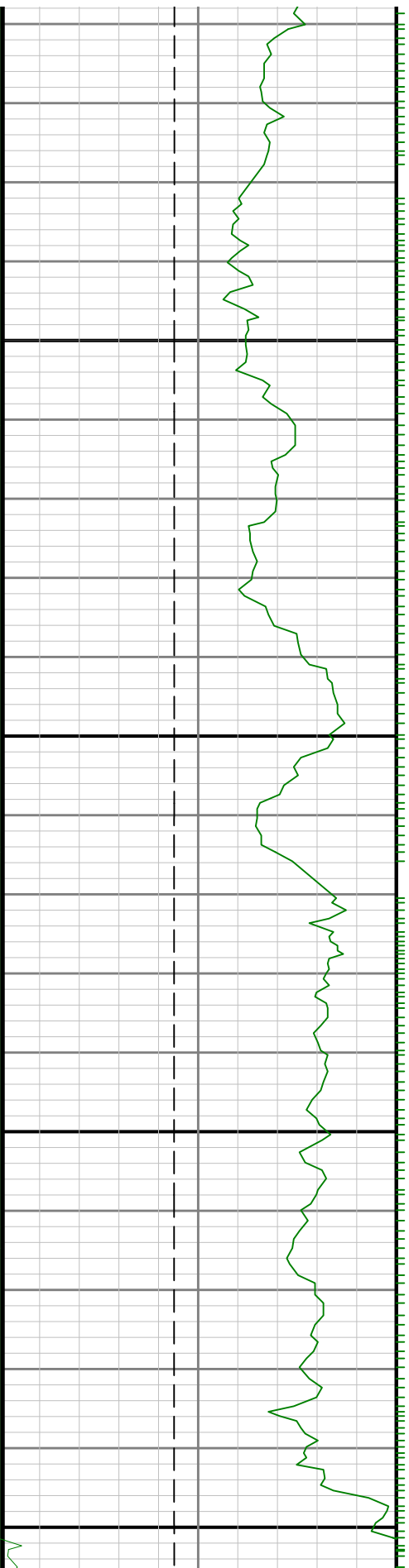




7600

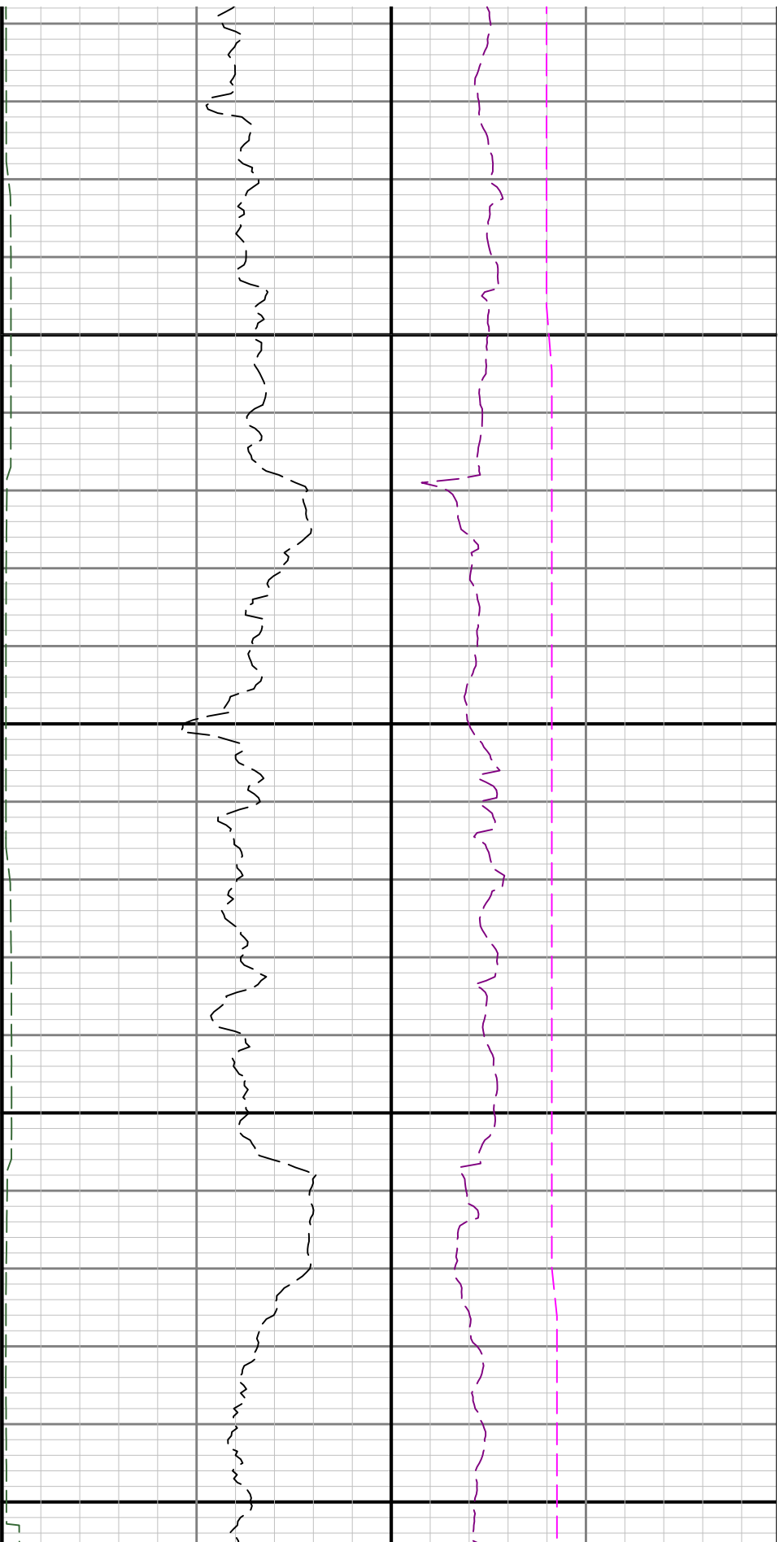
7700

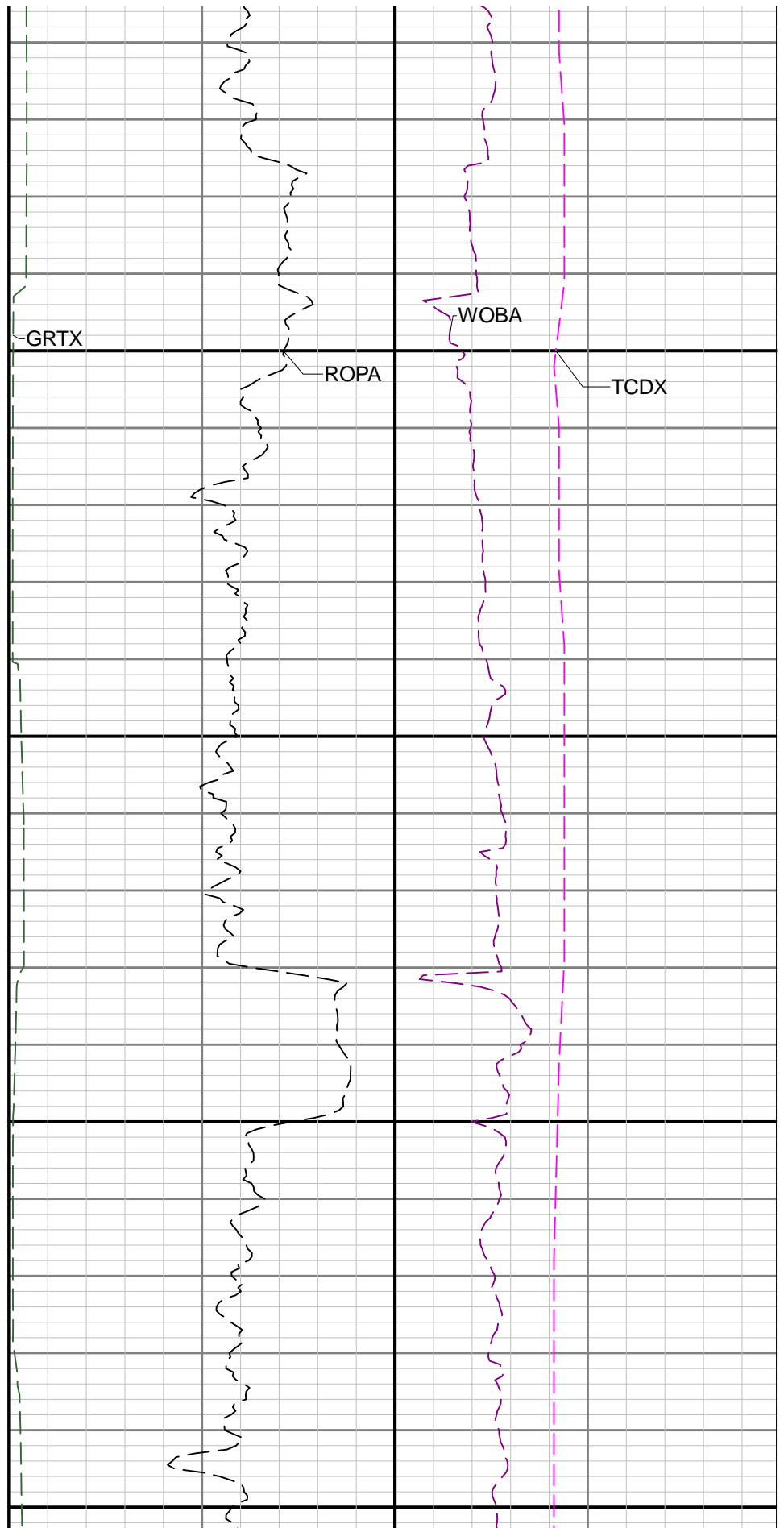
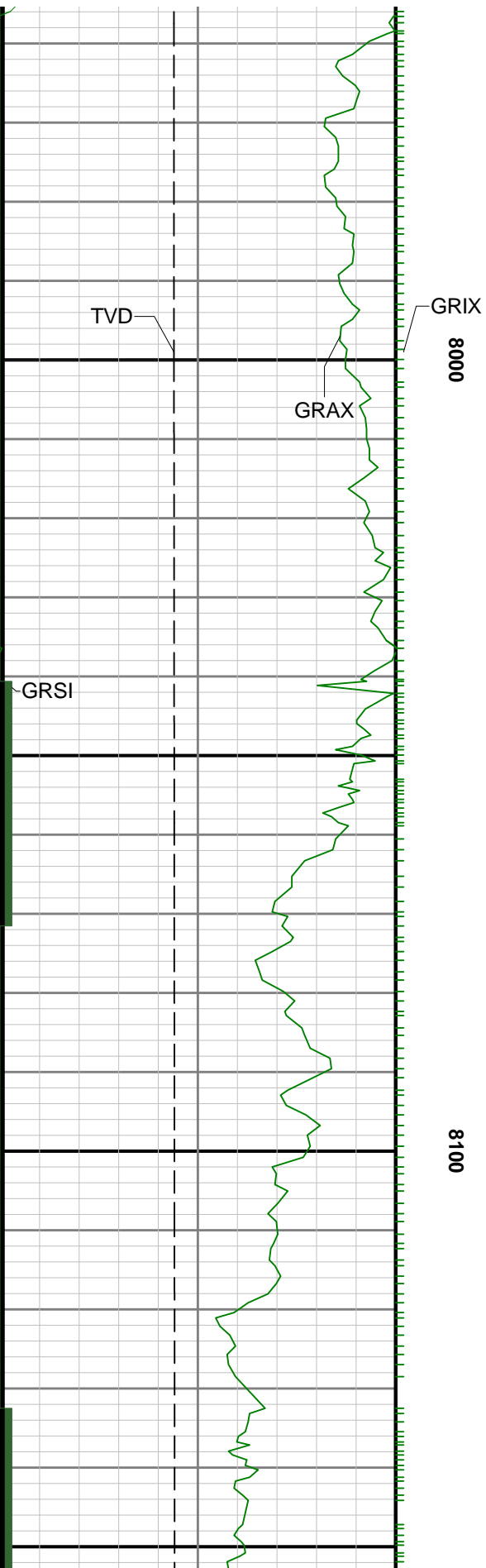


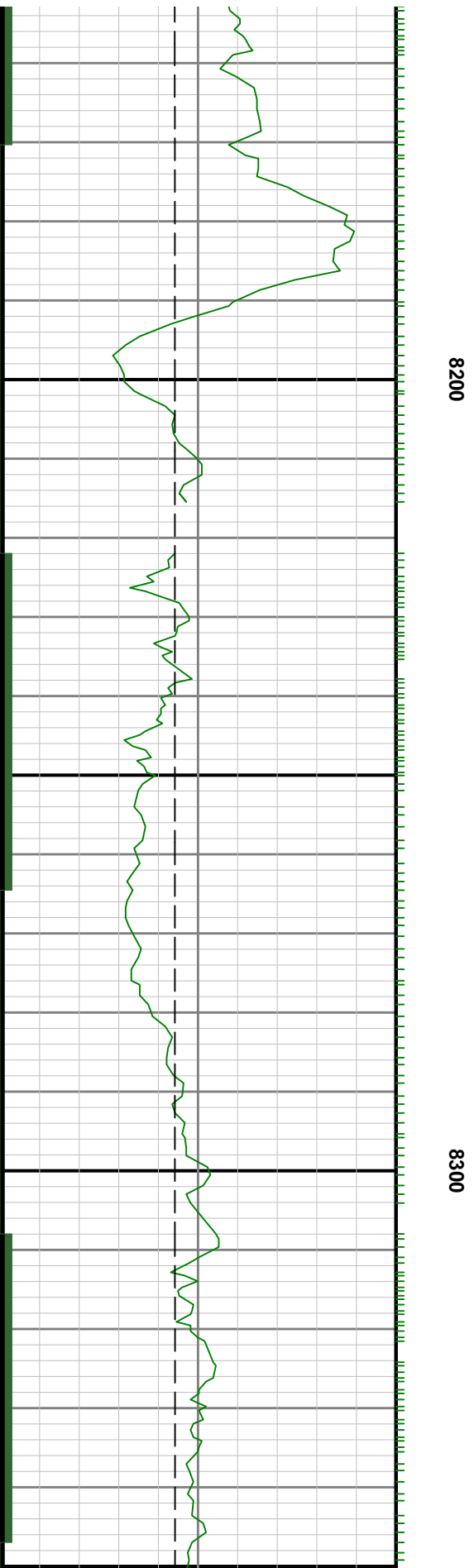
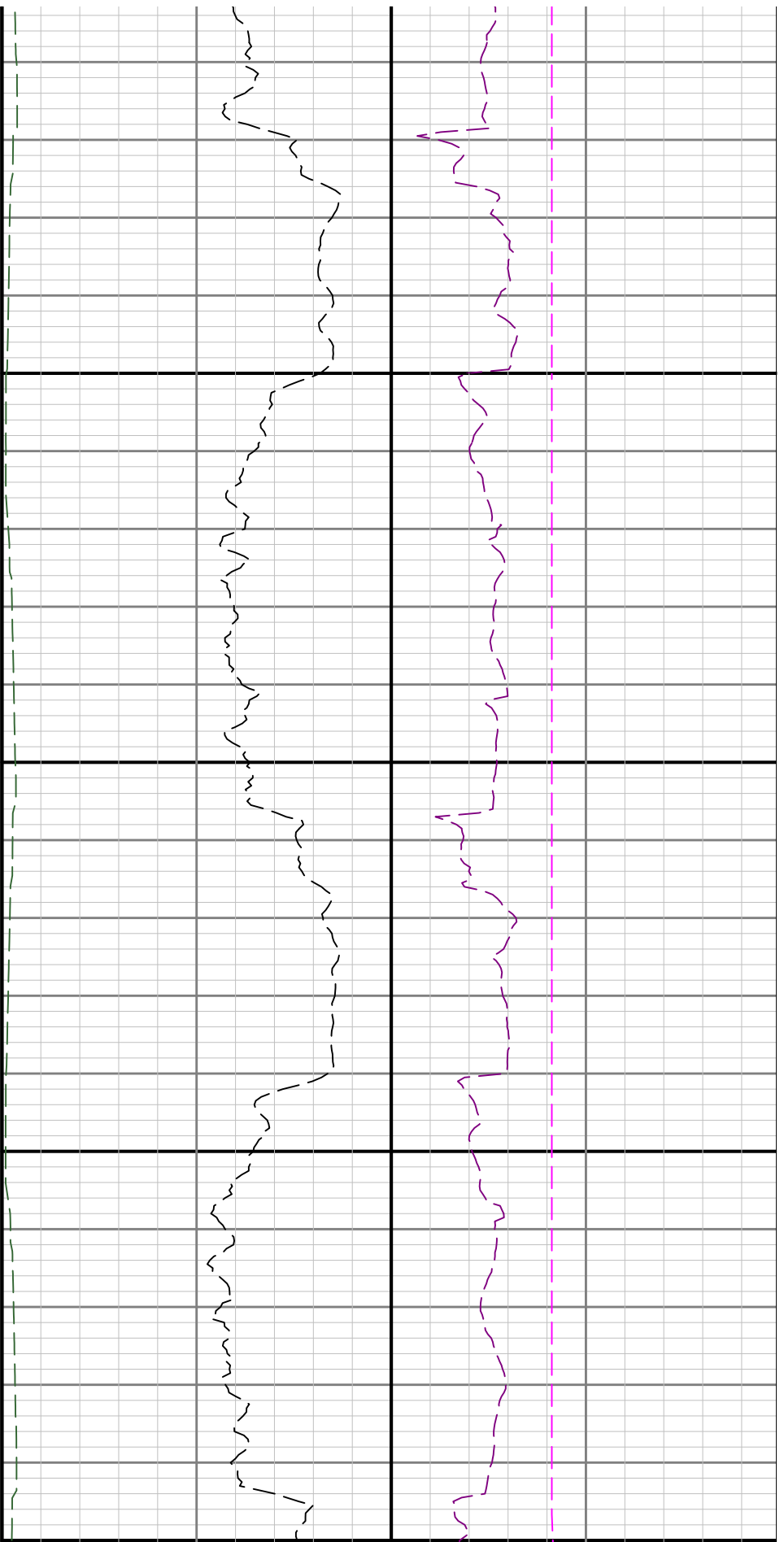


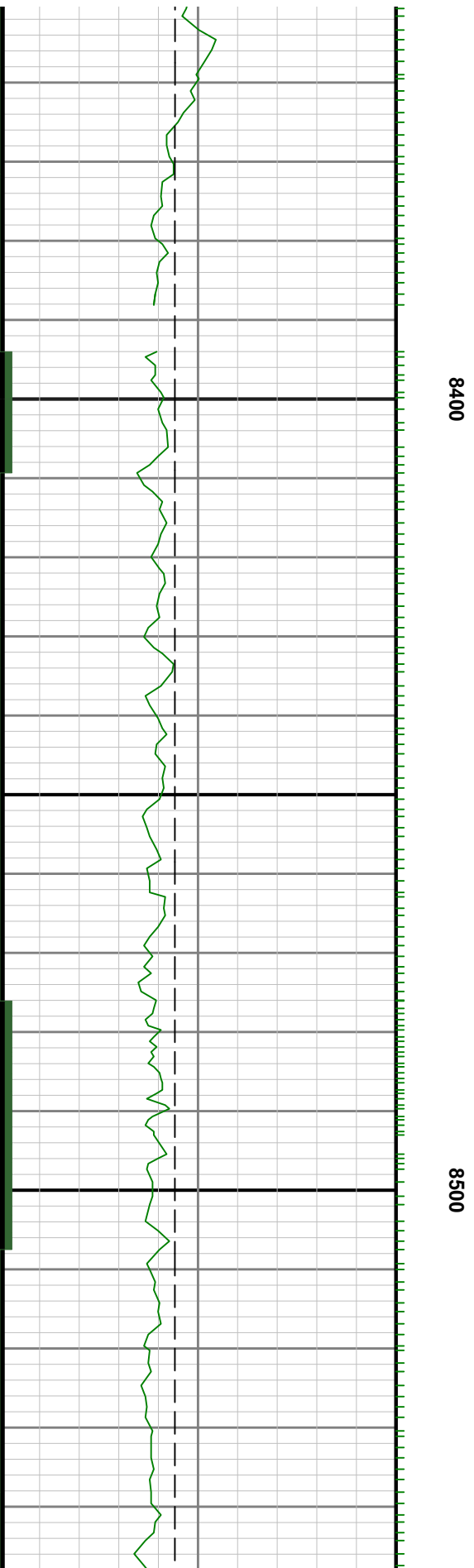
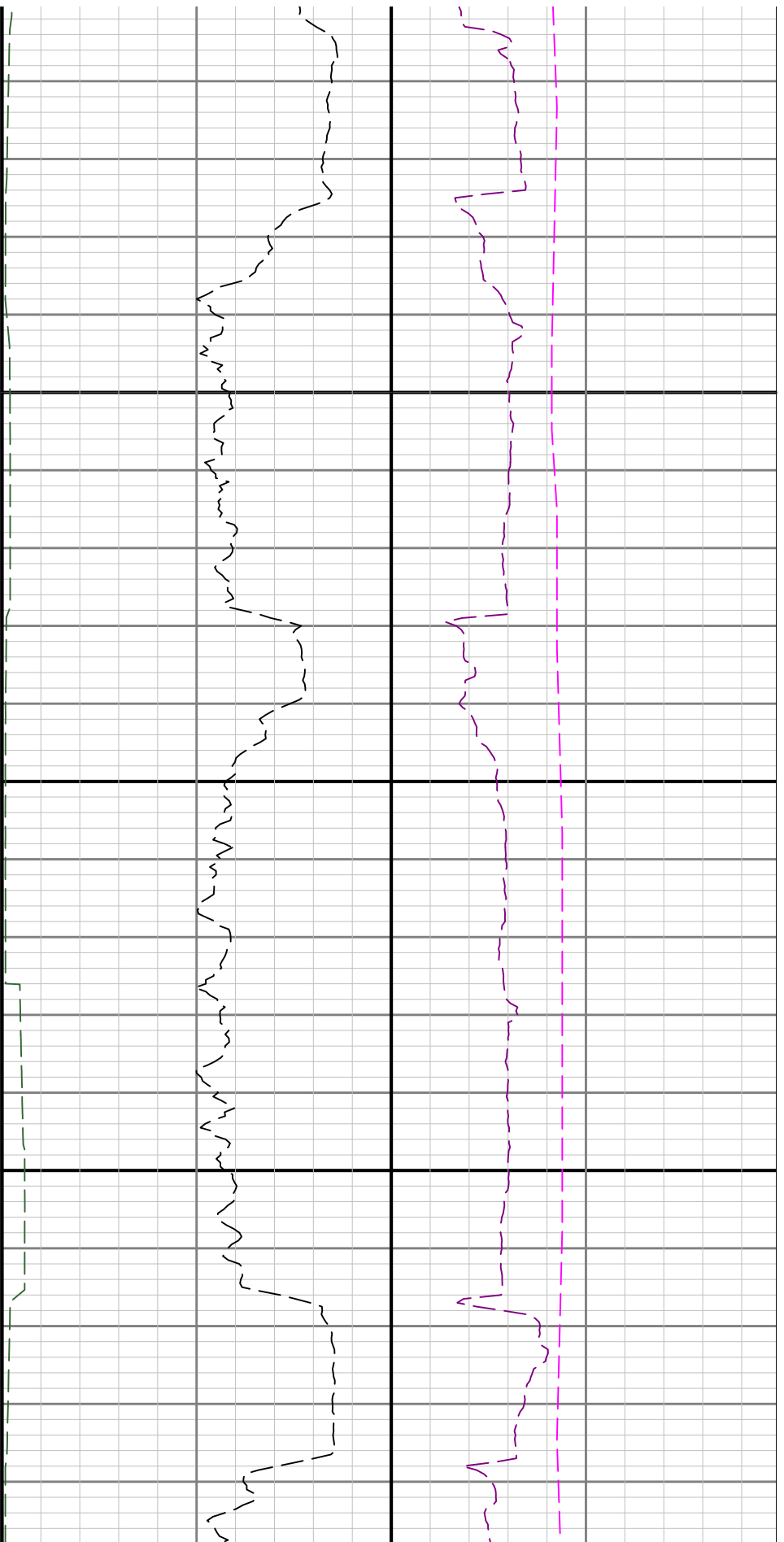
7800

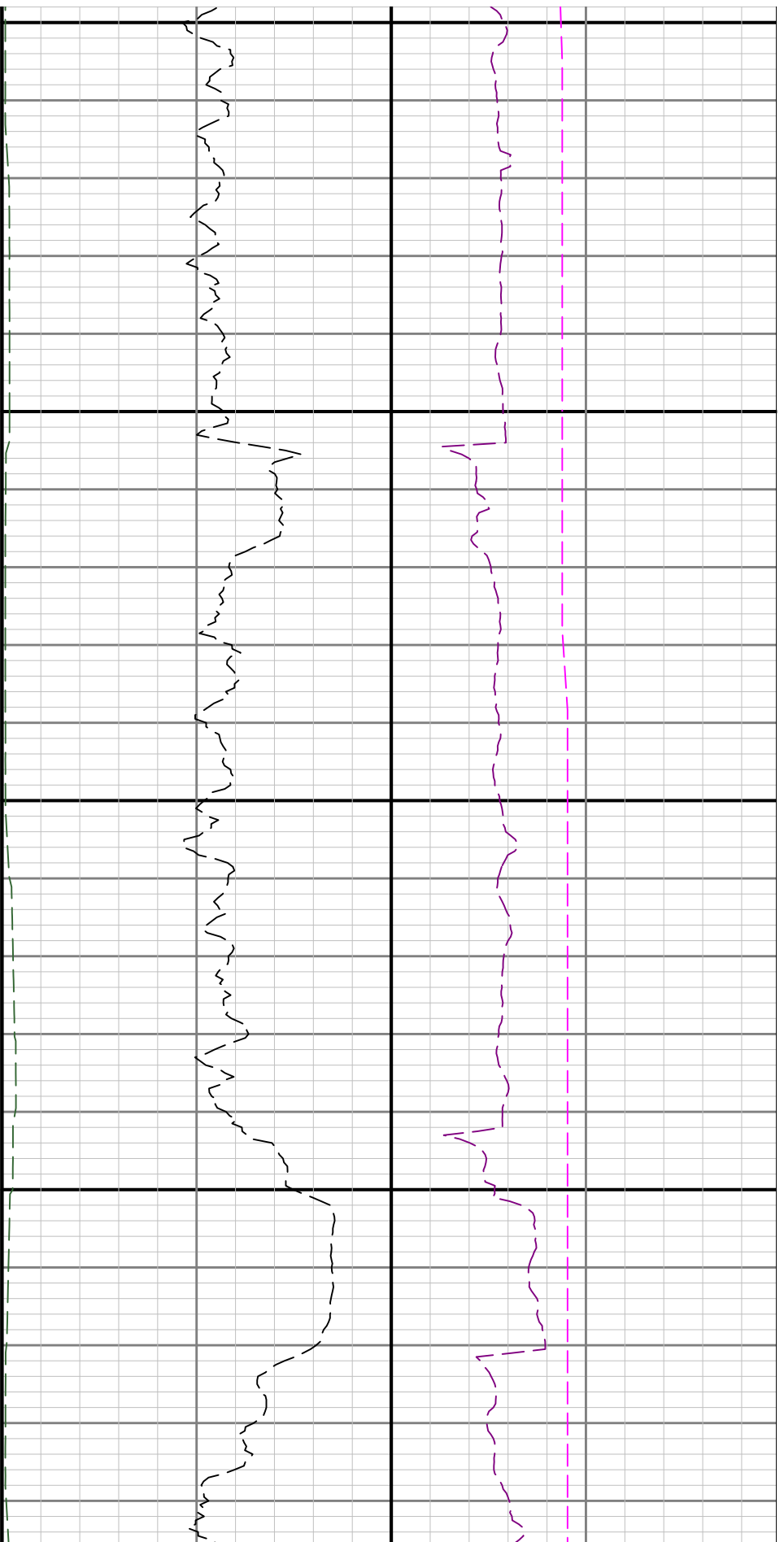
7900





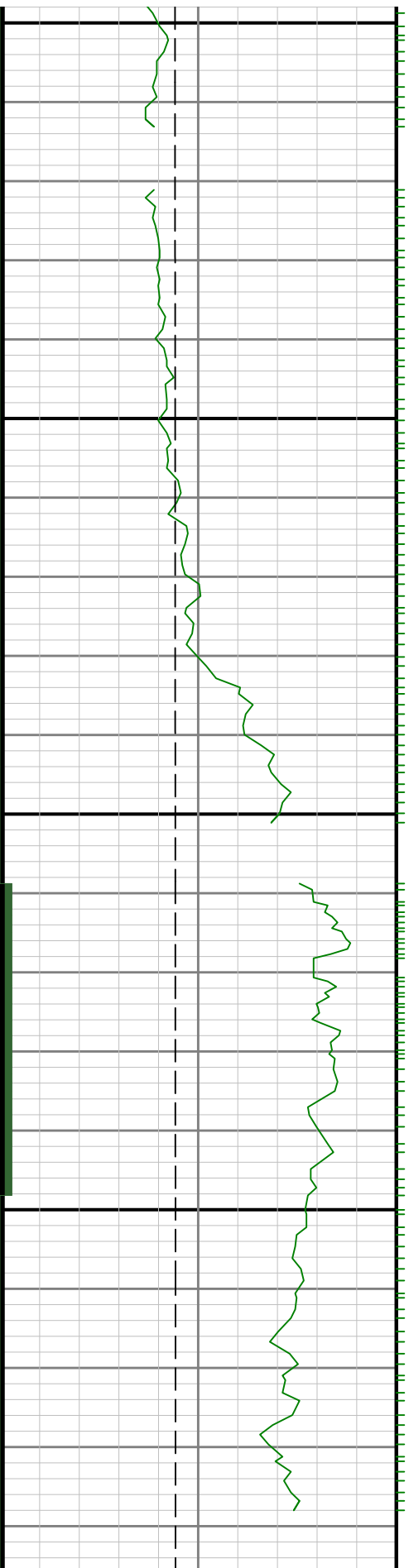


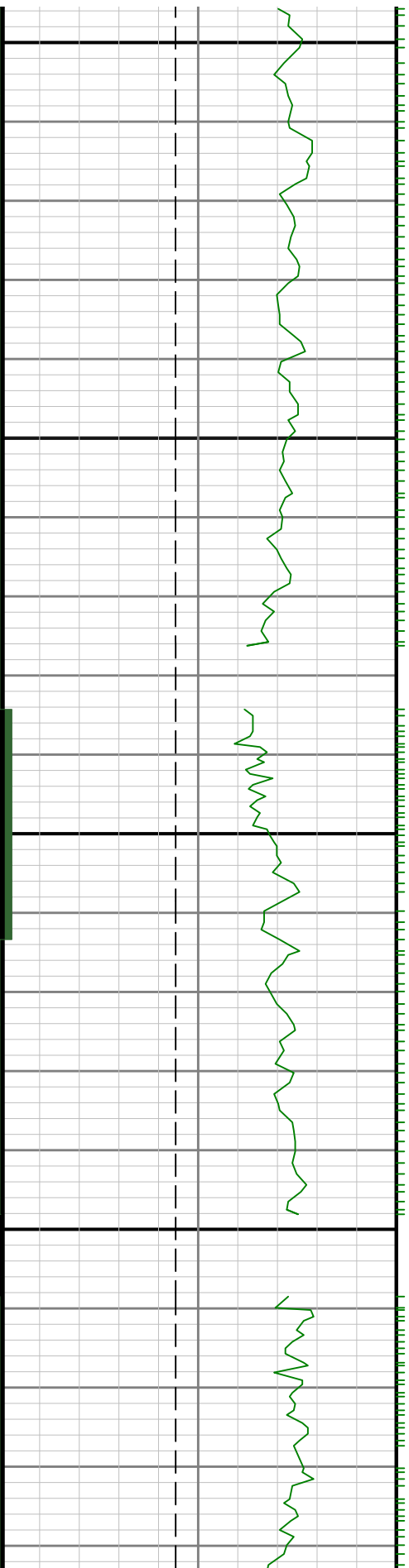




0098

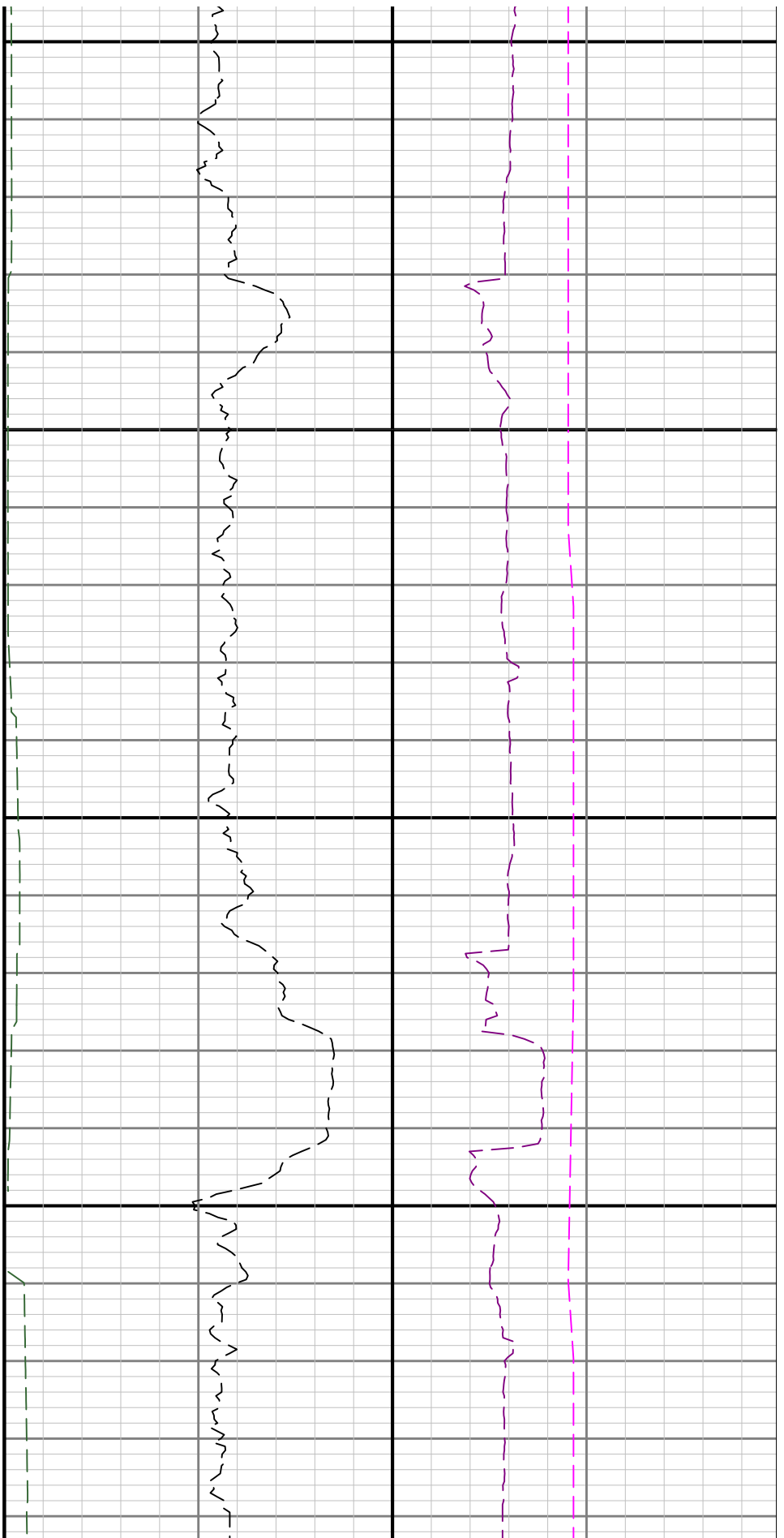
8700

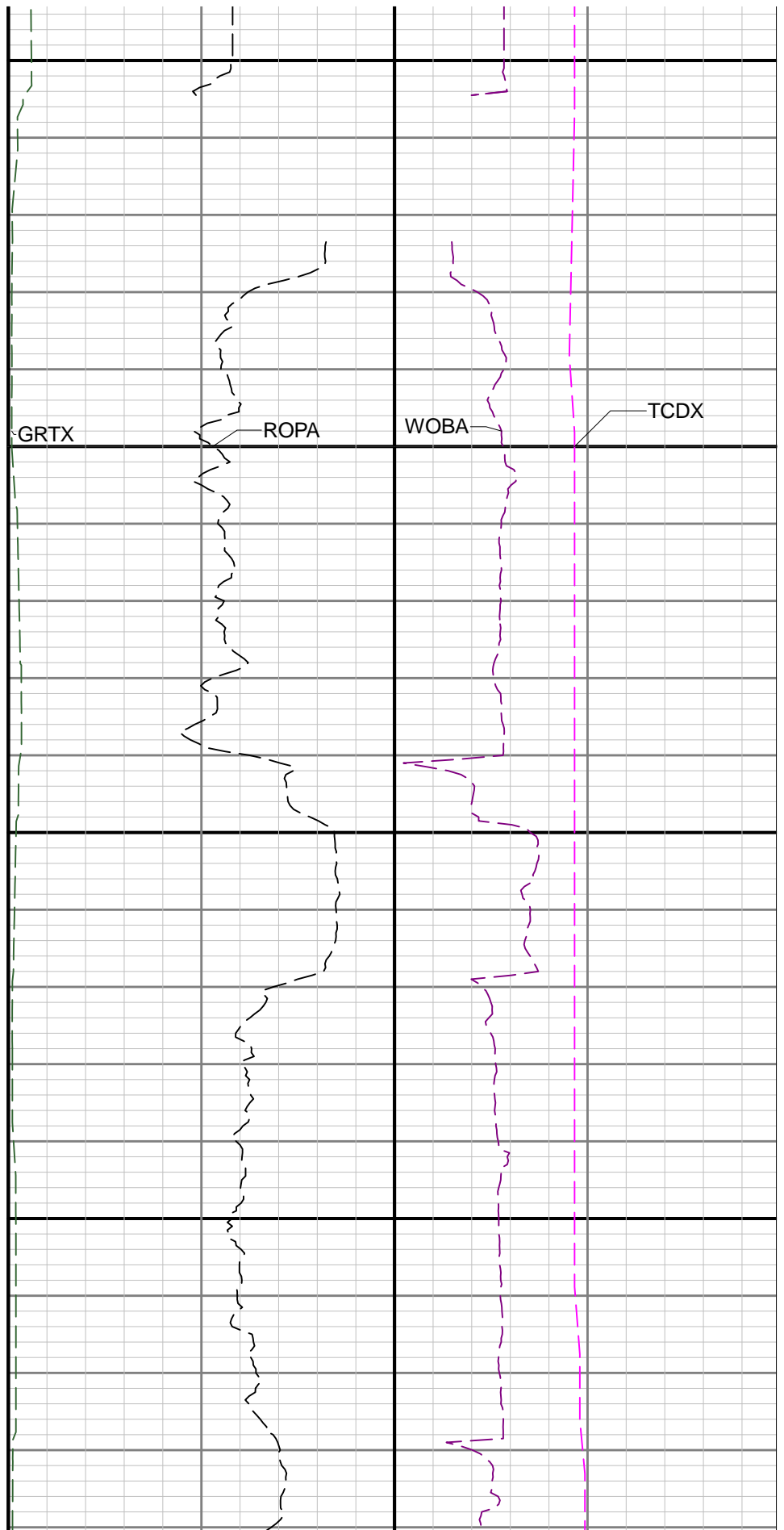
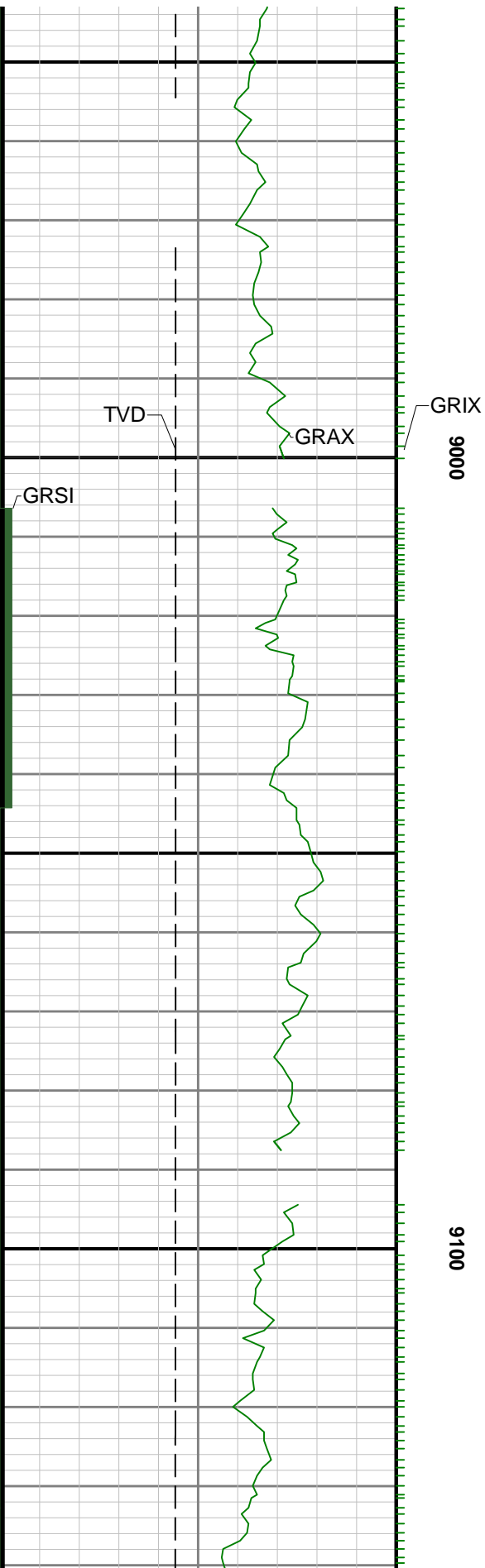




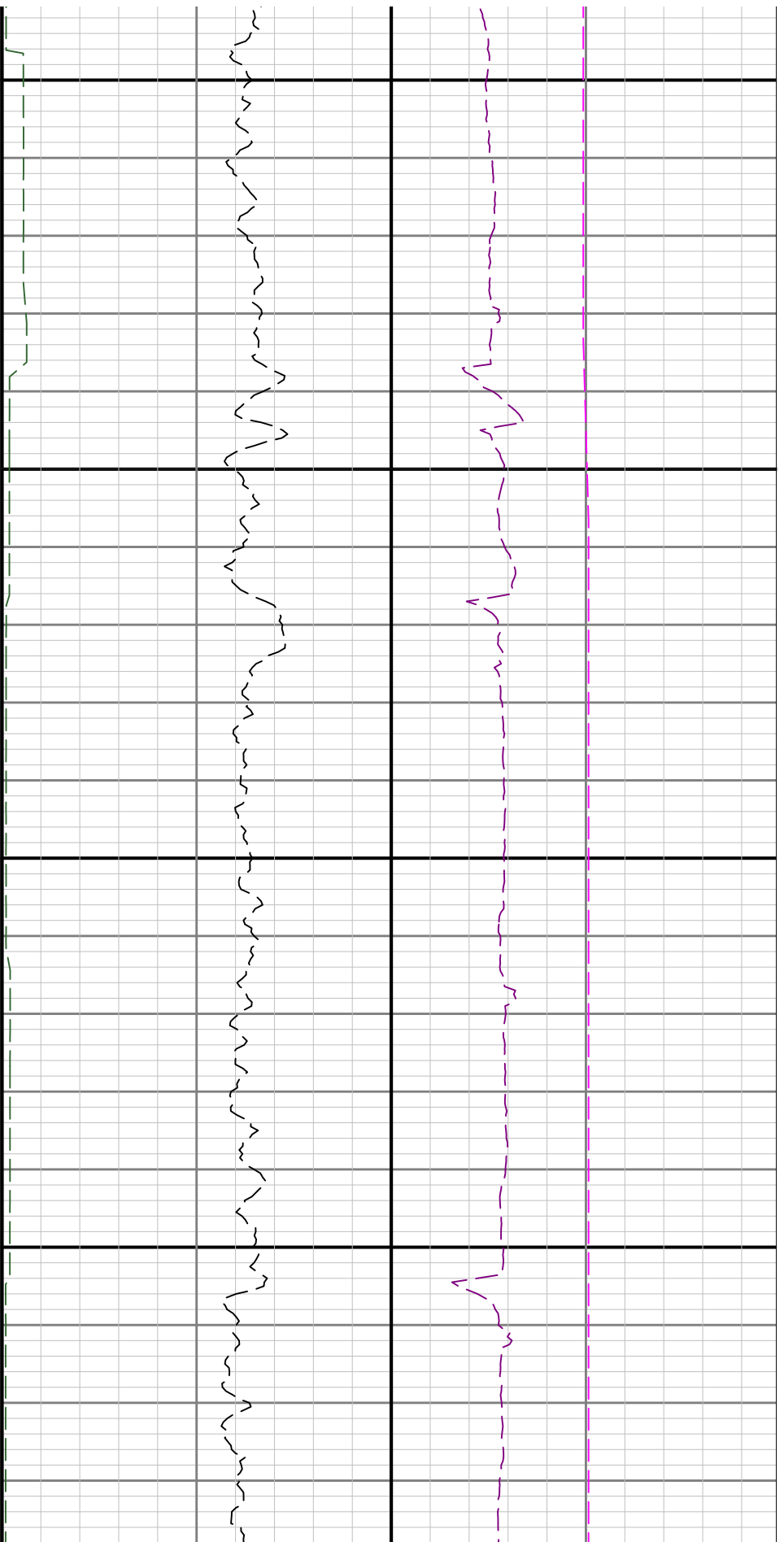
0088

0068



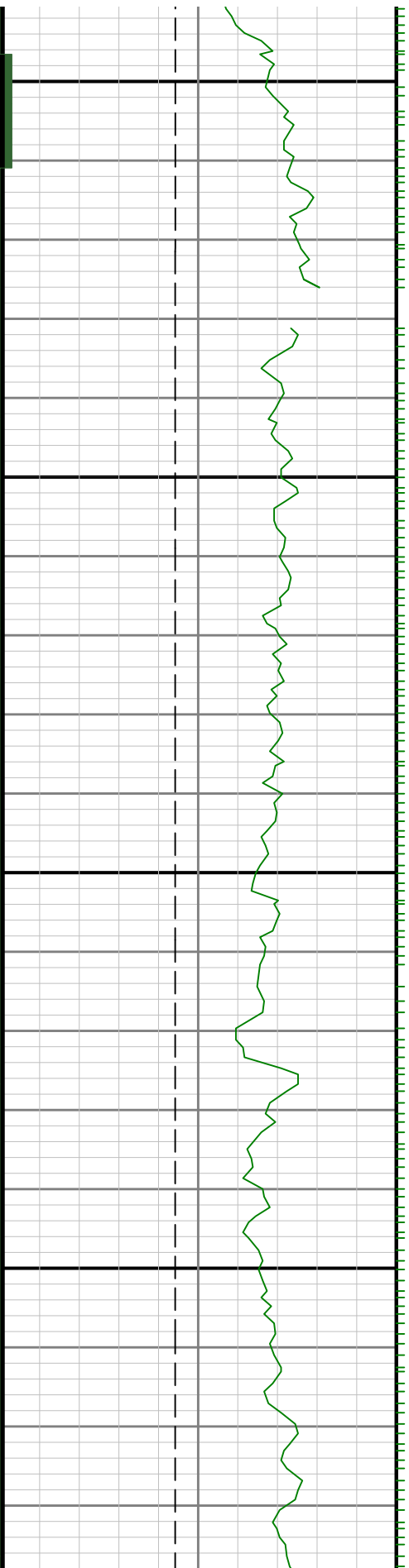


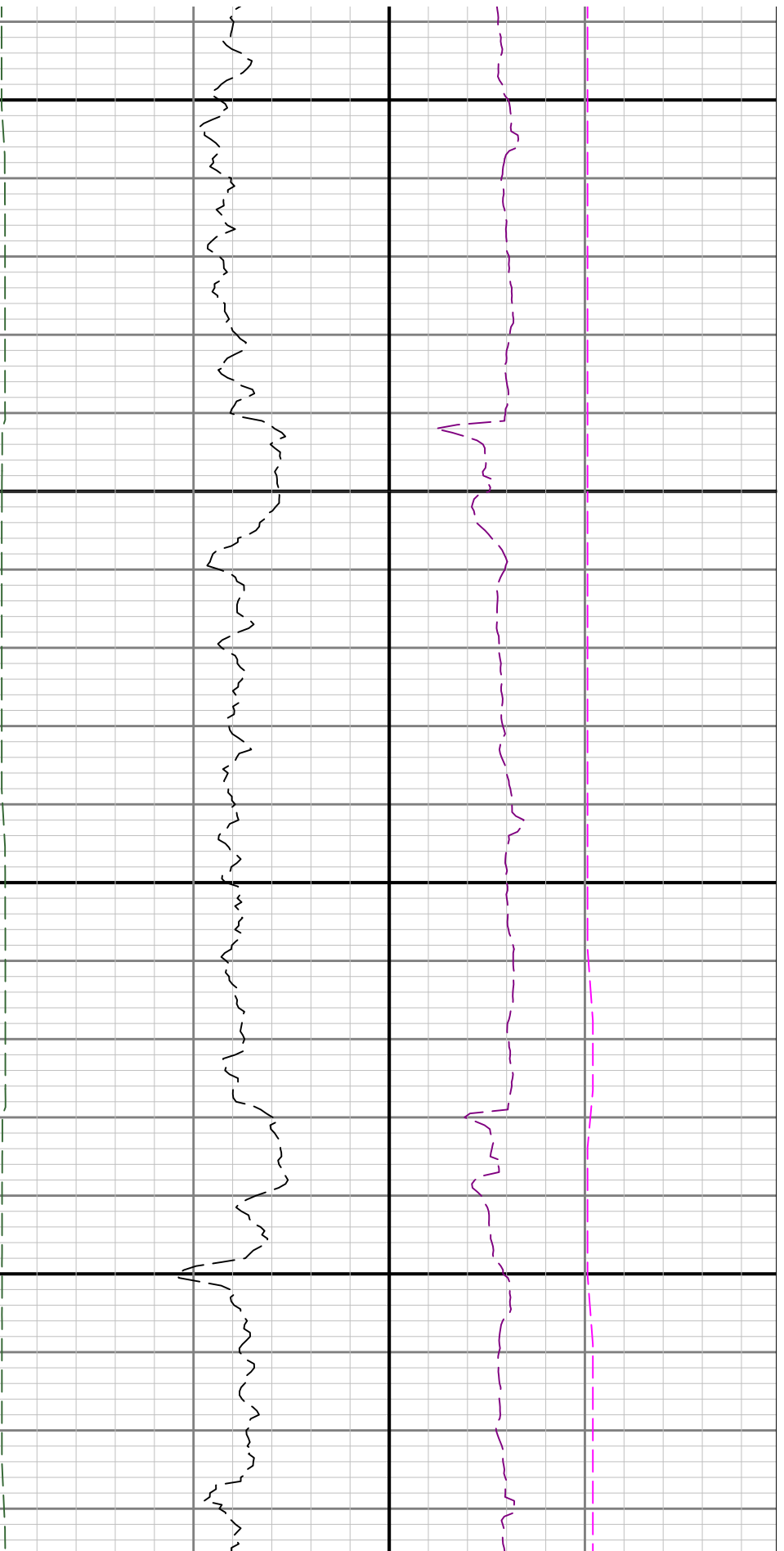




9200

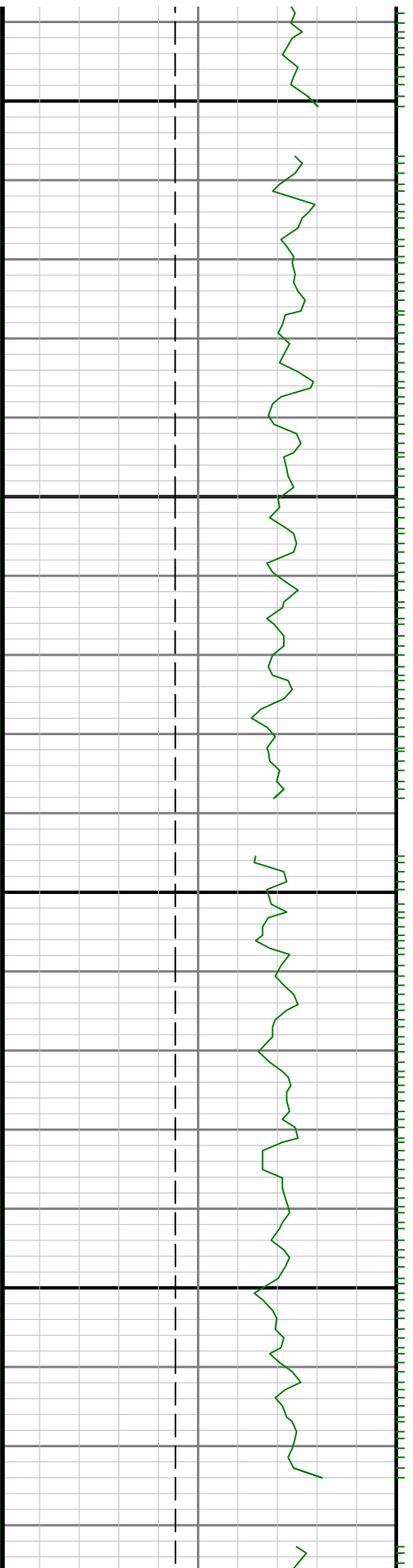
9300

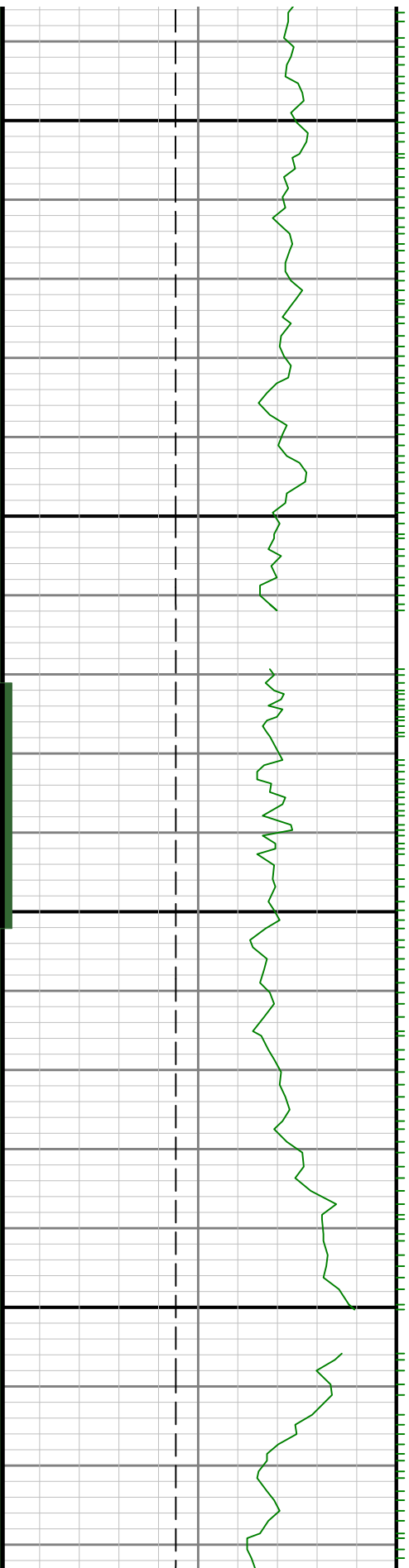




9400

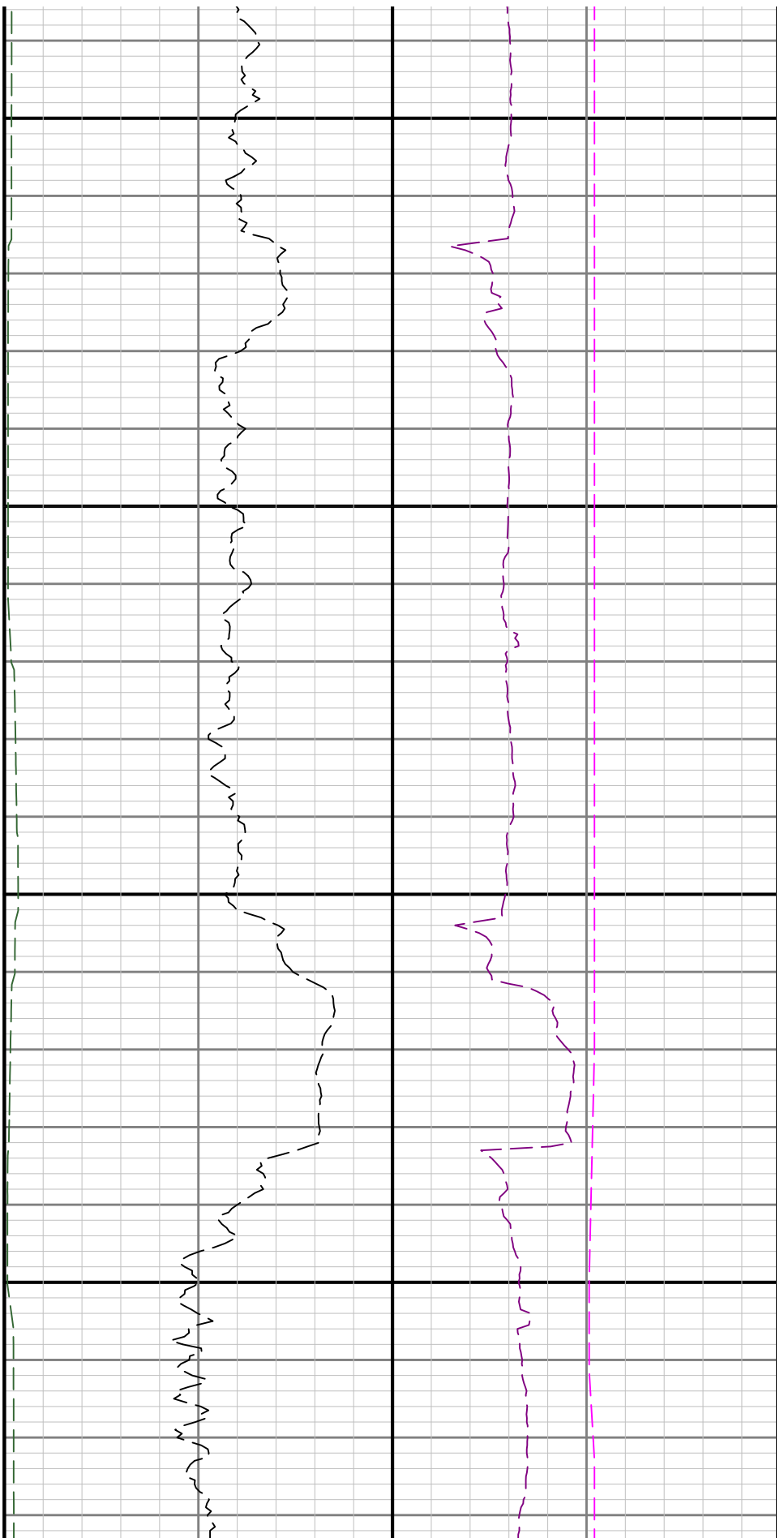
9500

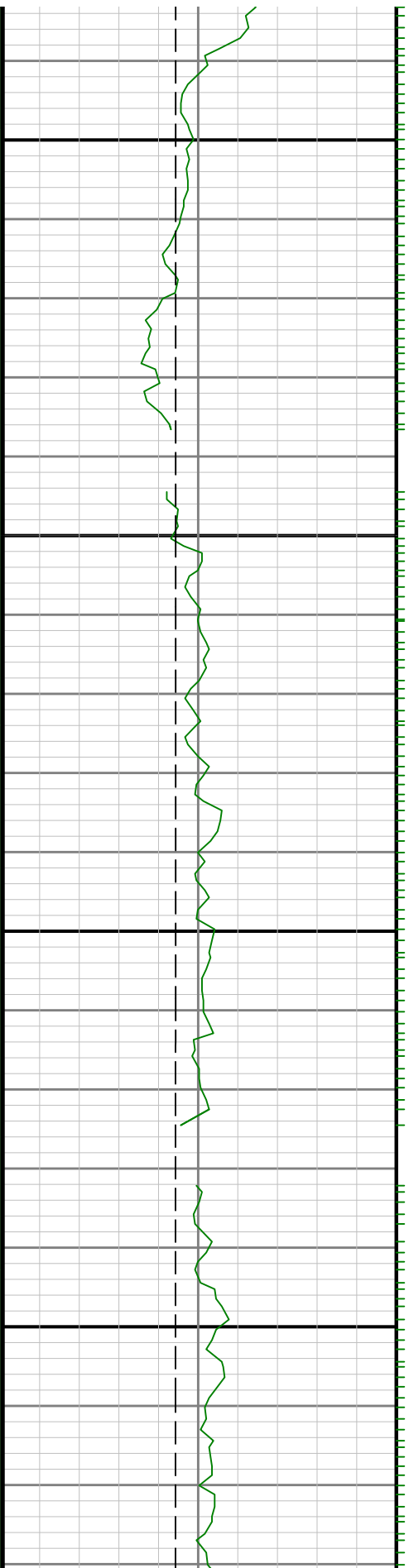




0060

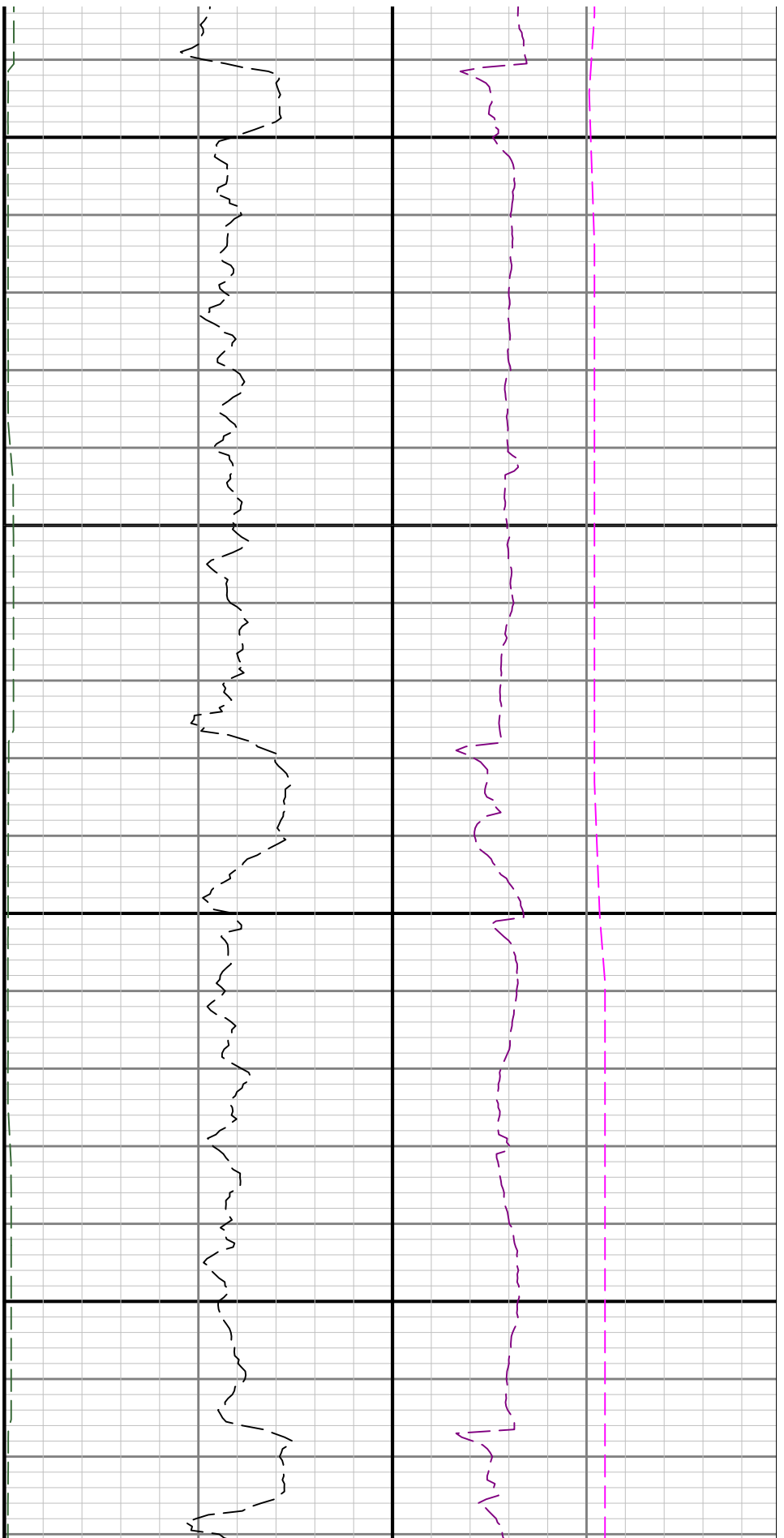
9700

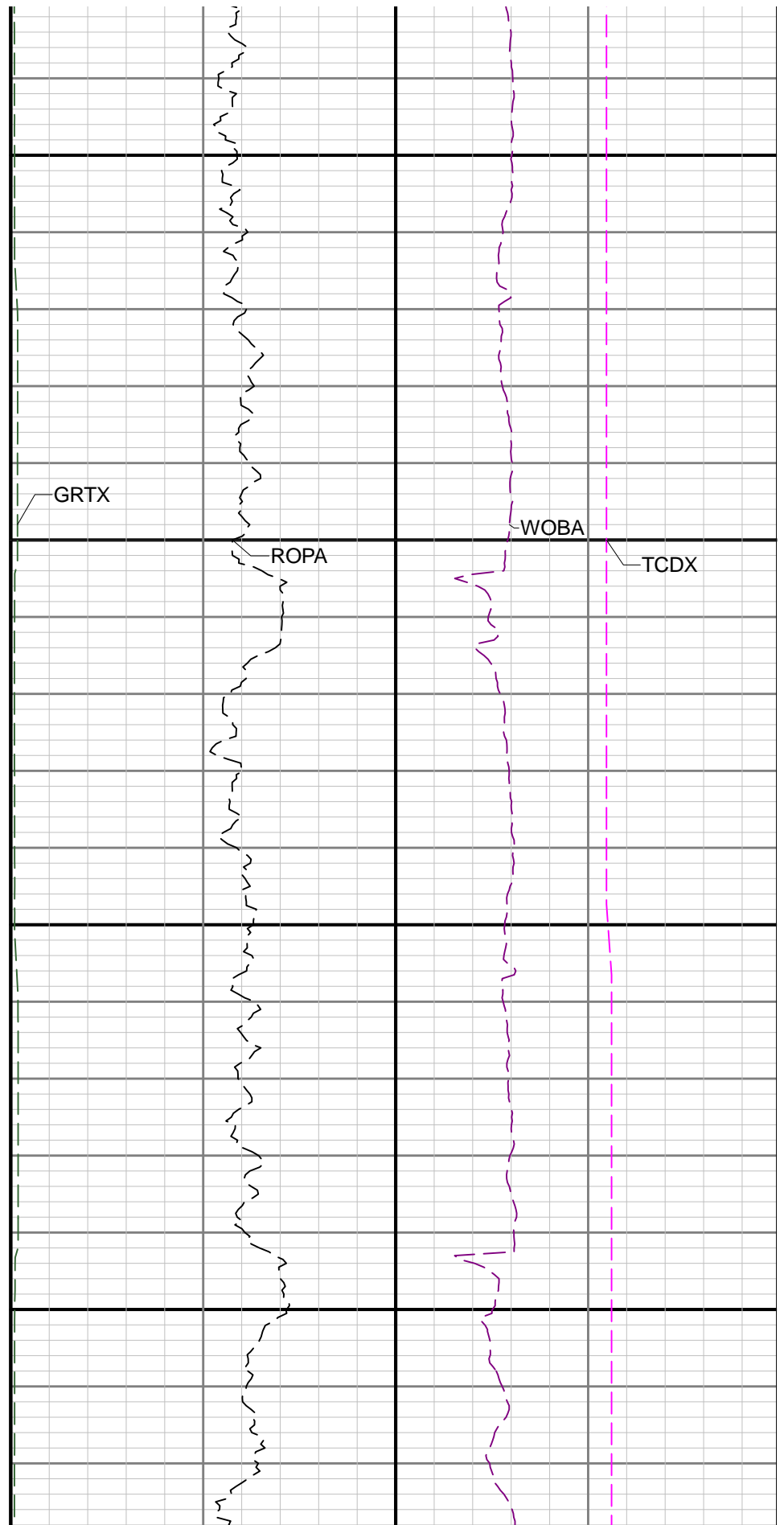
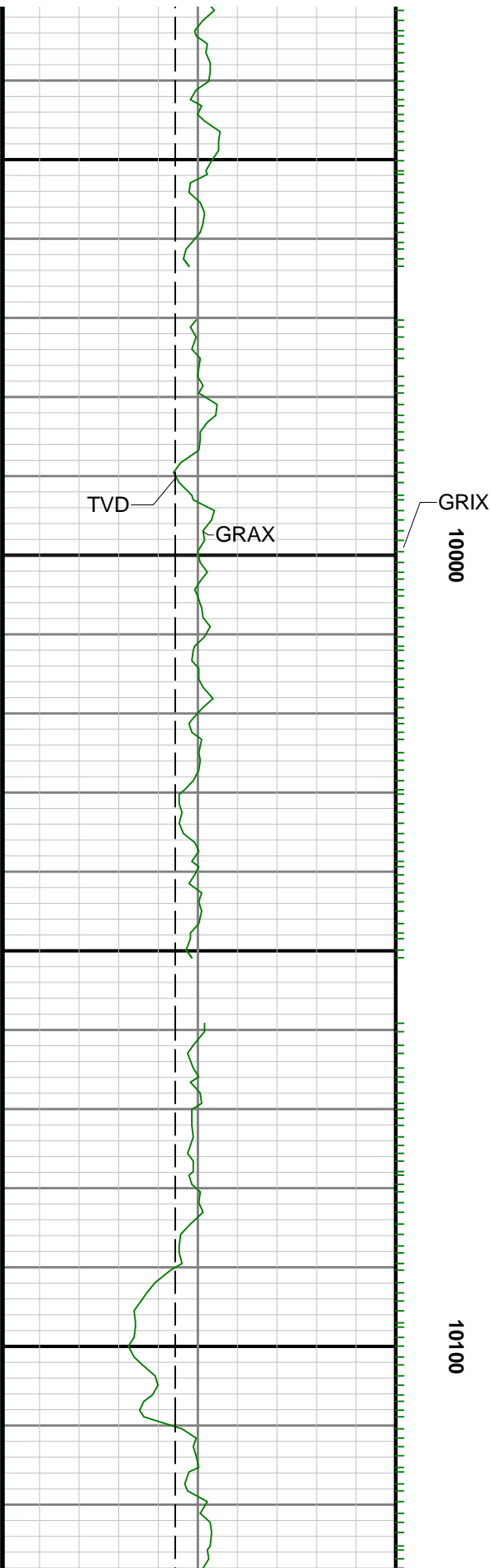


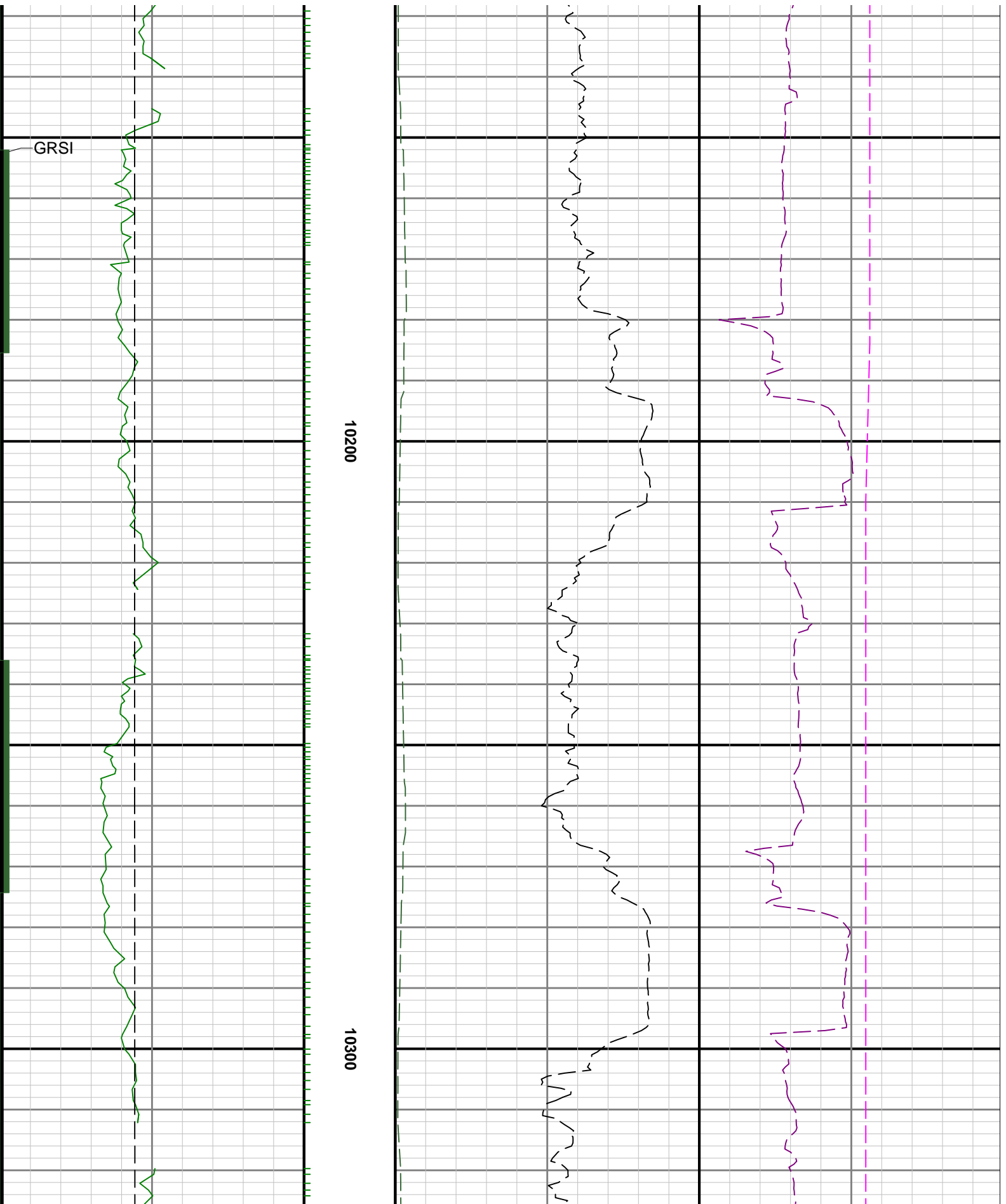


9900

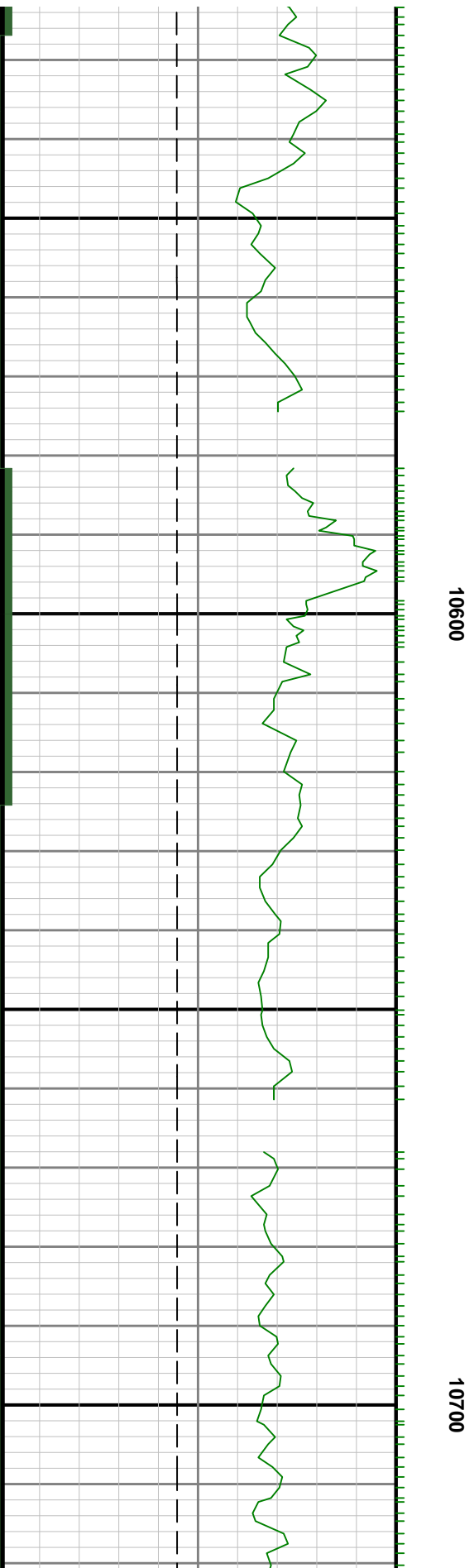
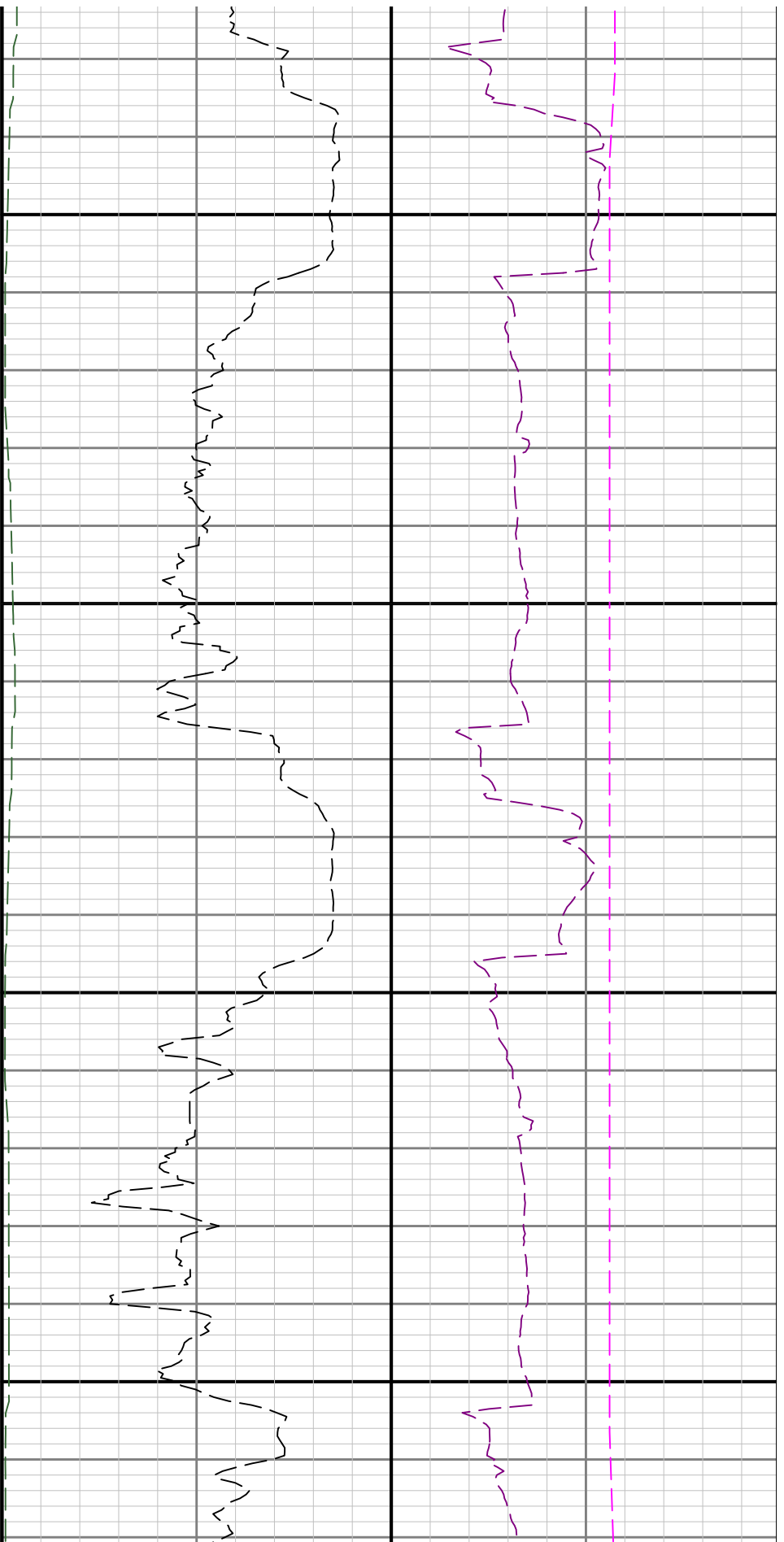
0086



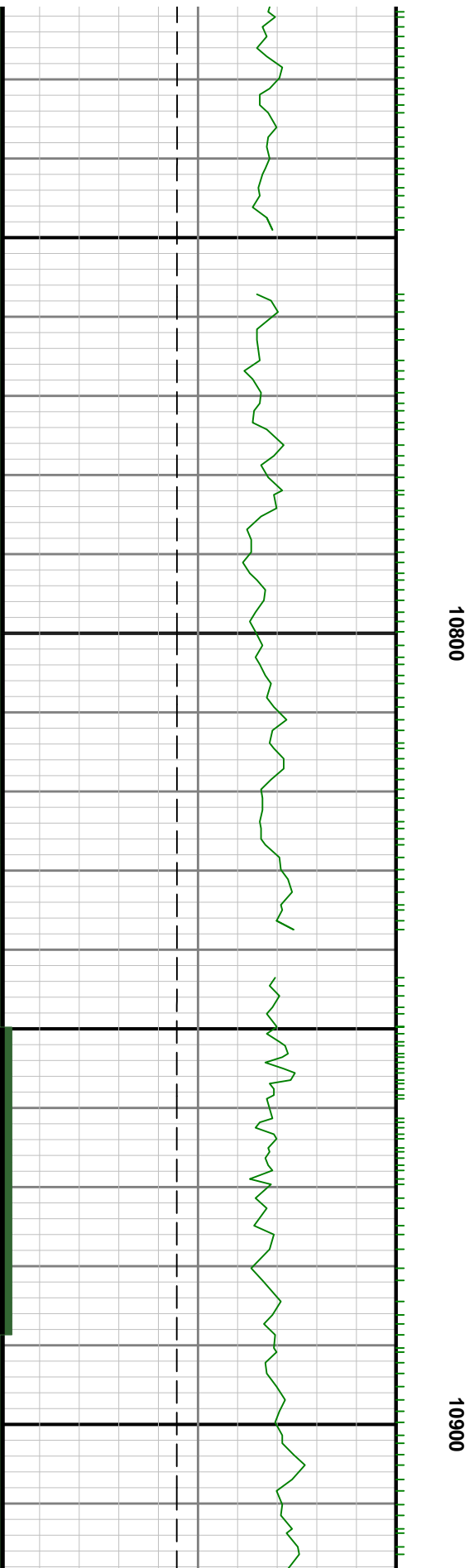
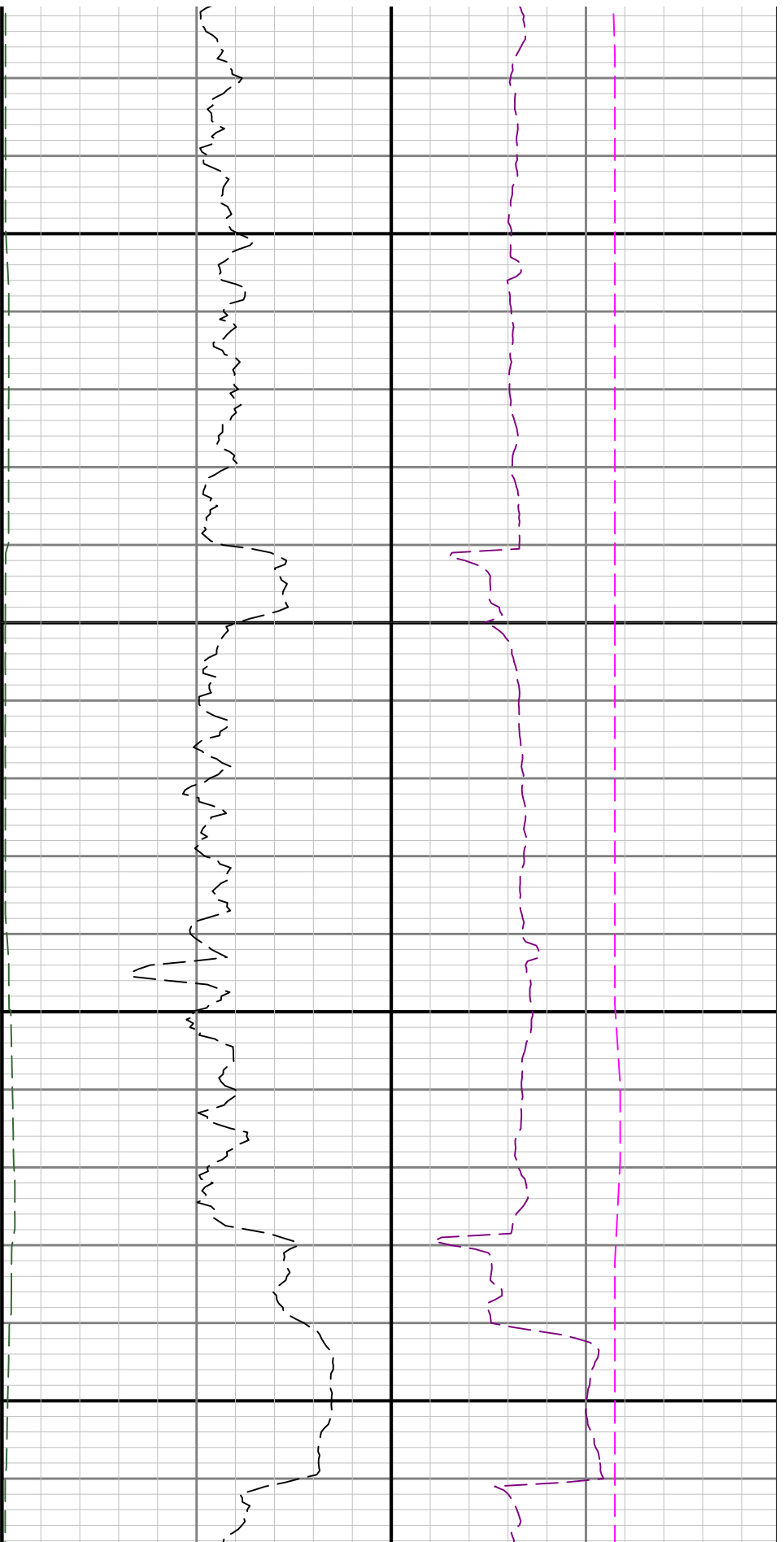


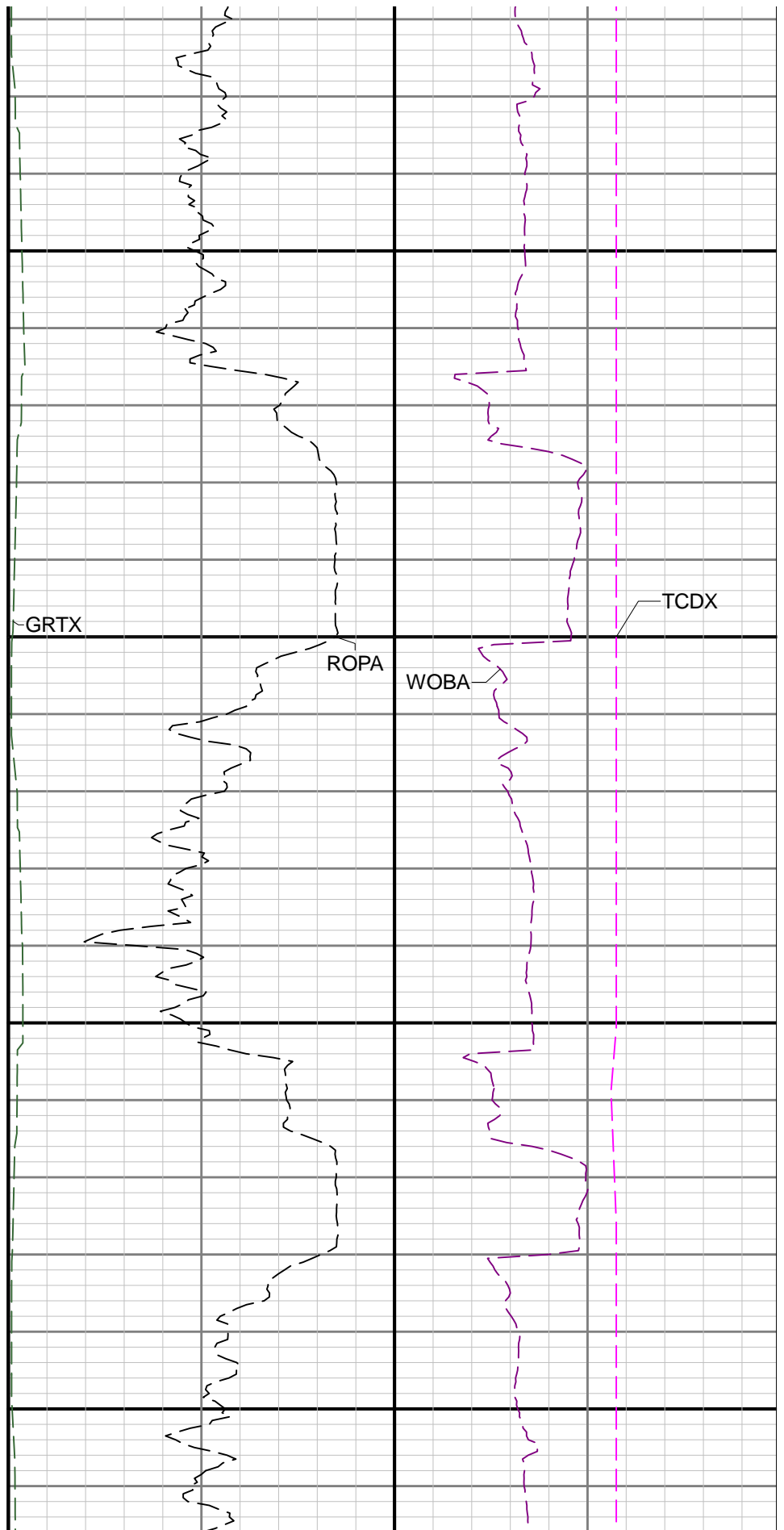
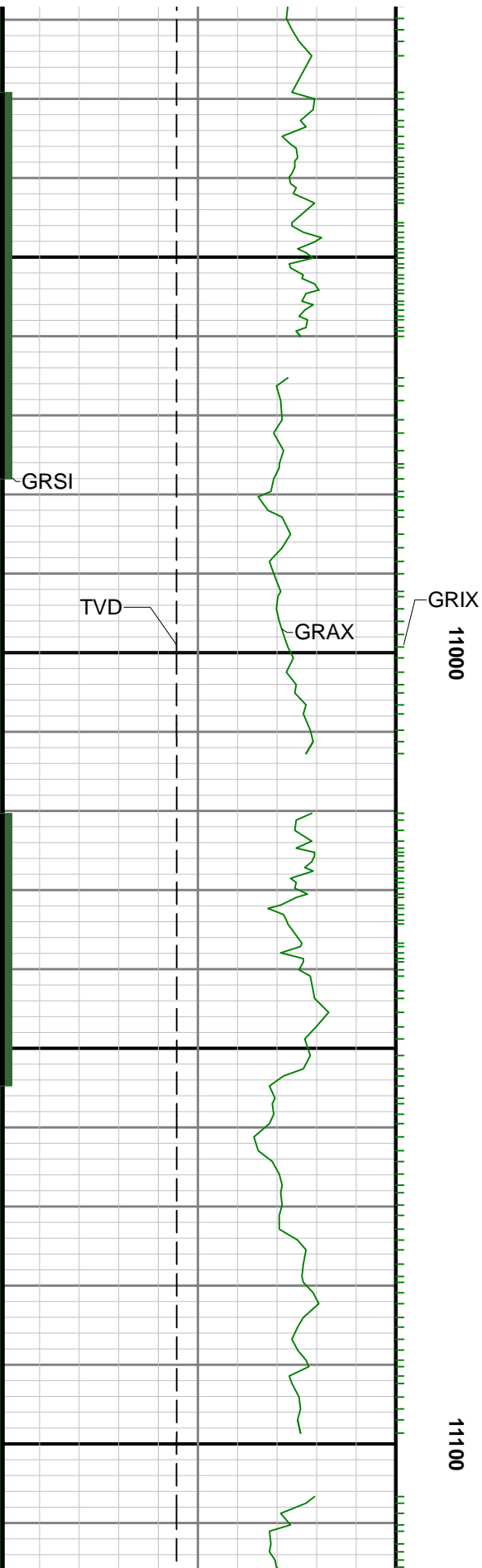


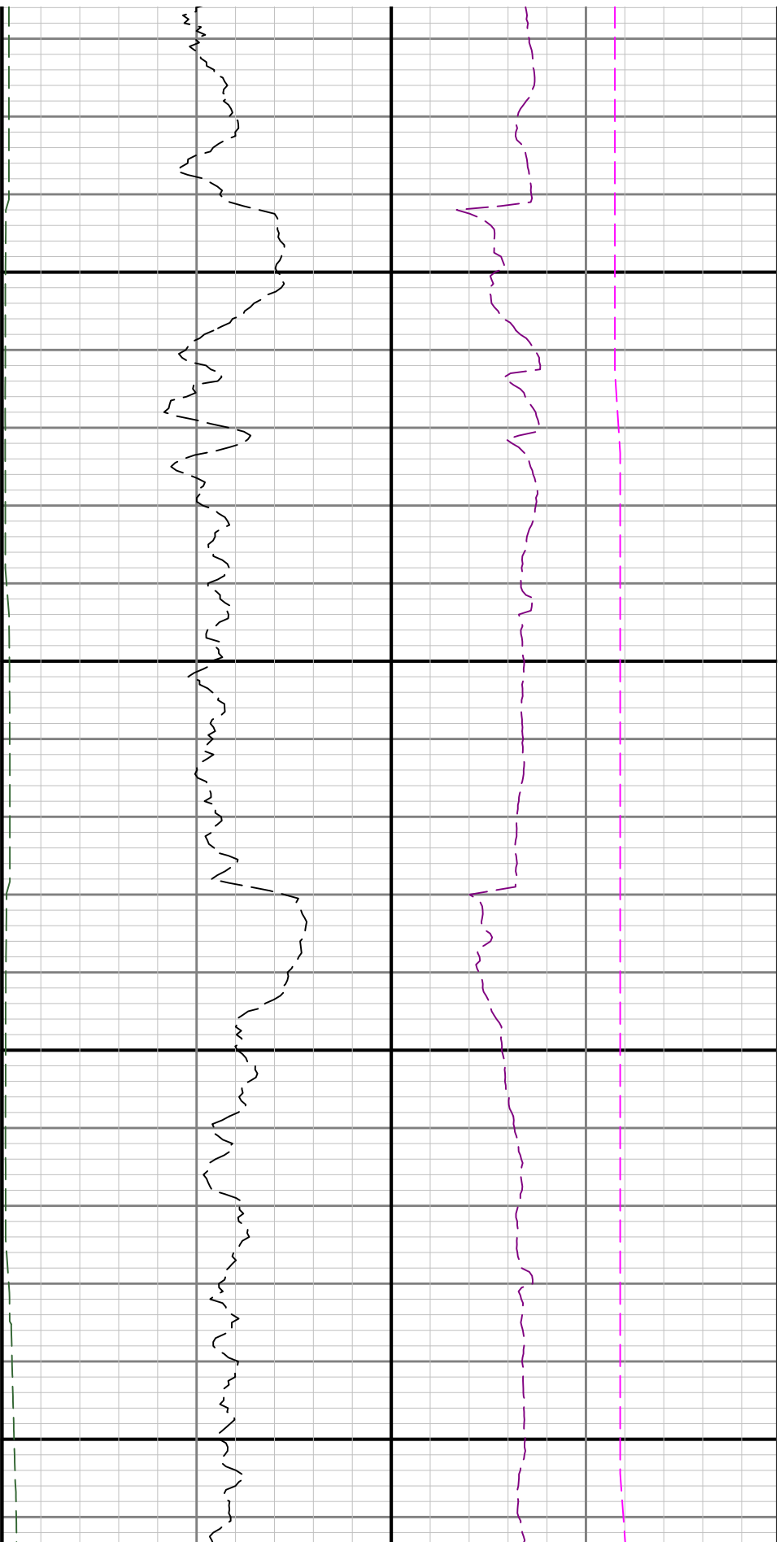






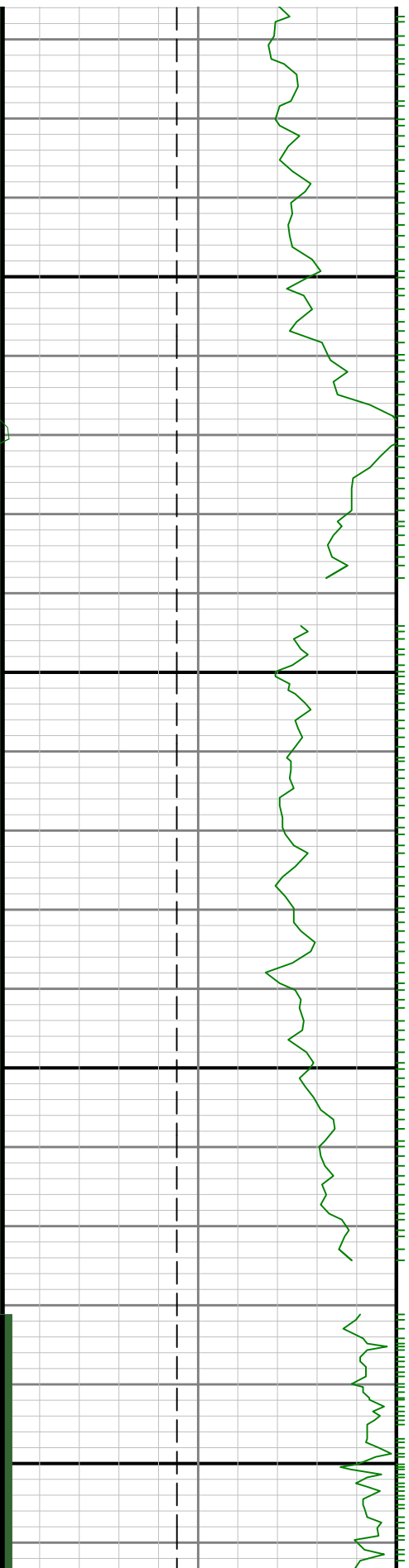


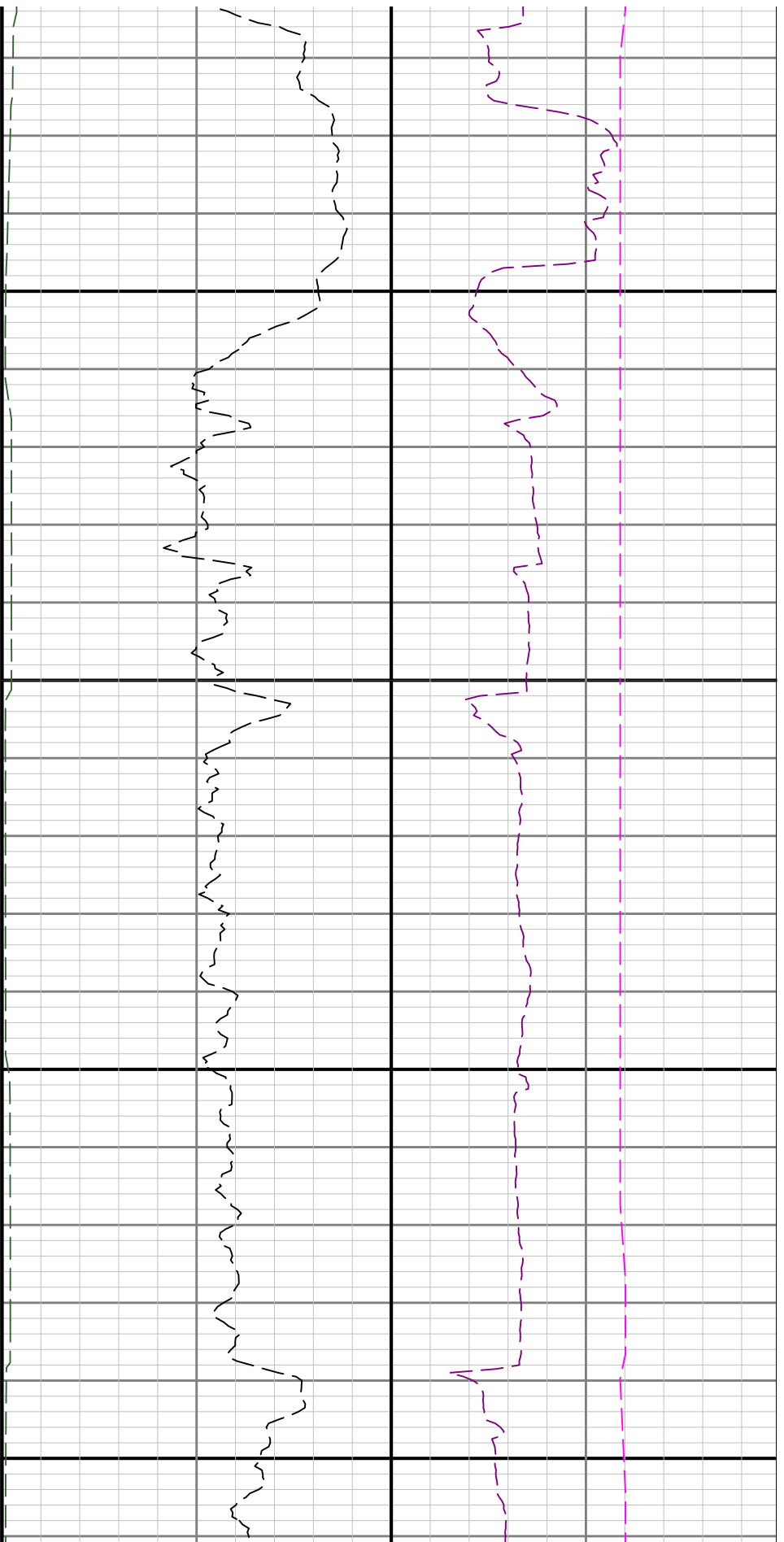




11200

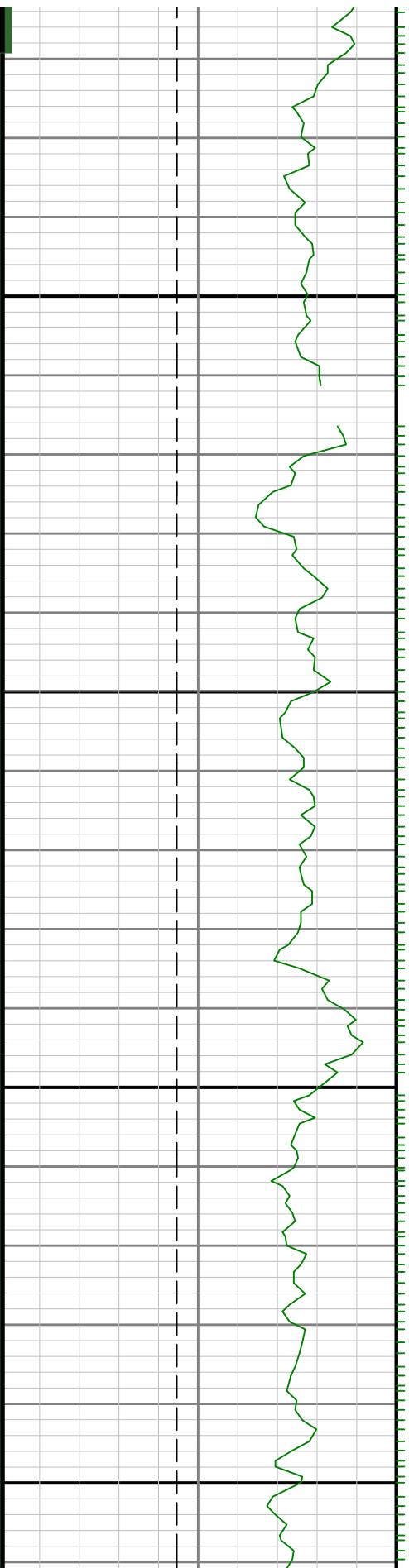
11300

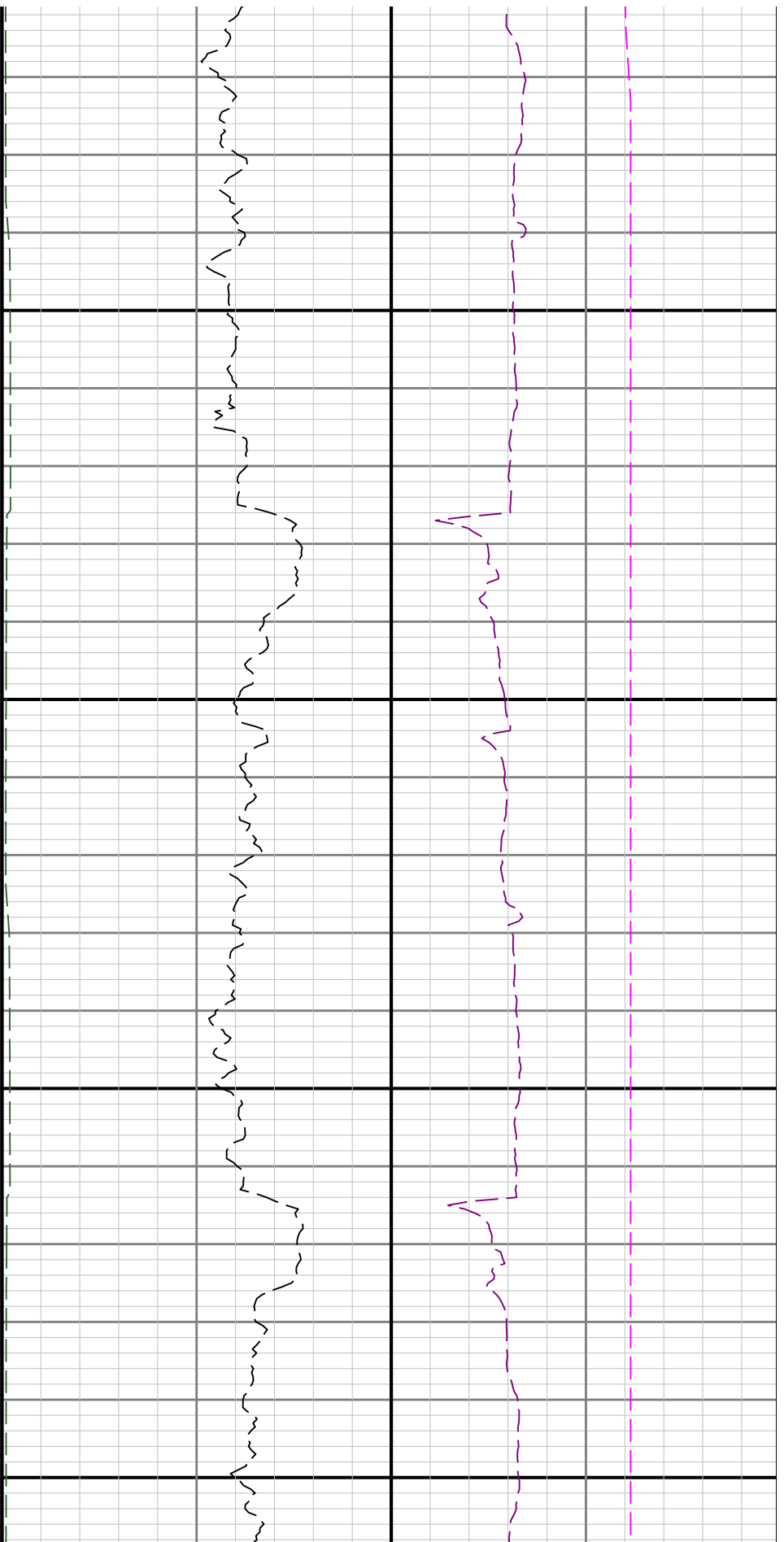




11400

11500





11600

11700

