

HALLIBURTON

iCem[®] Service

TERRA ENERGY PARTNERS

For: TERRA

Date: Saturday, October 21, 2017

GM 513-4 Surface PJR

API #: 05-045-23507

Sincerely,

Grand Junction Engineering Team

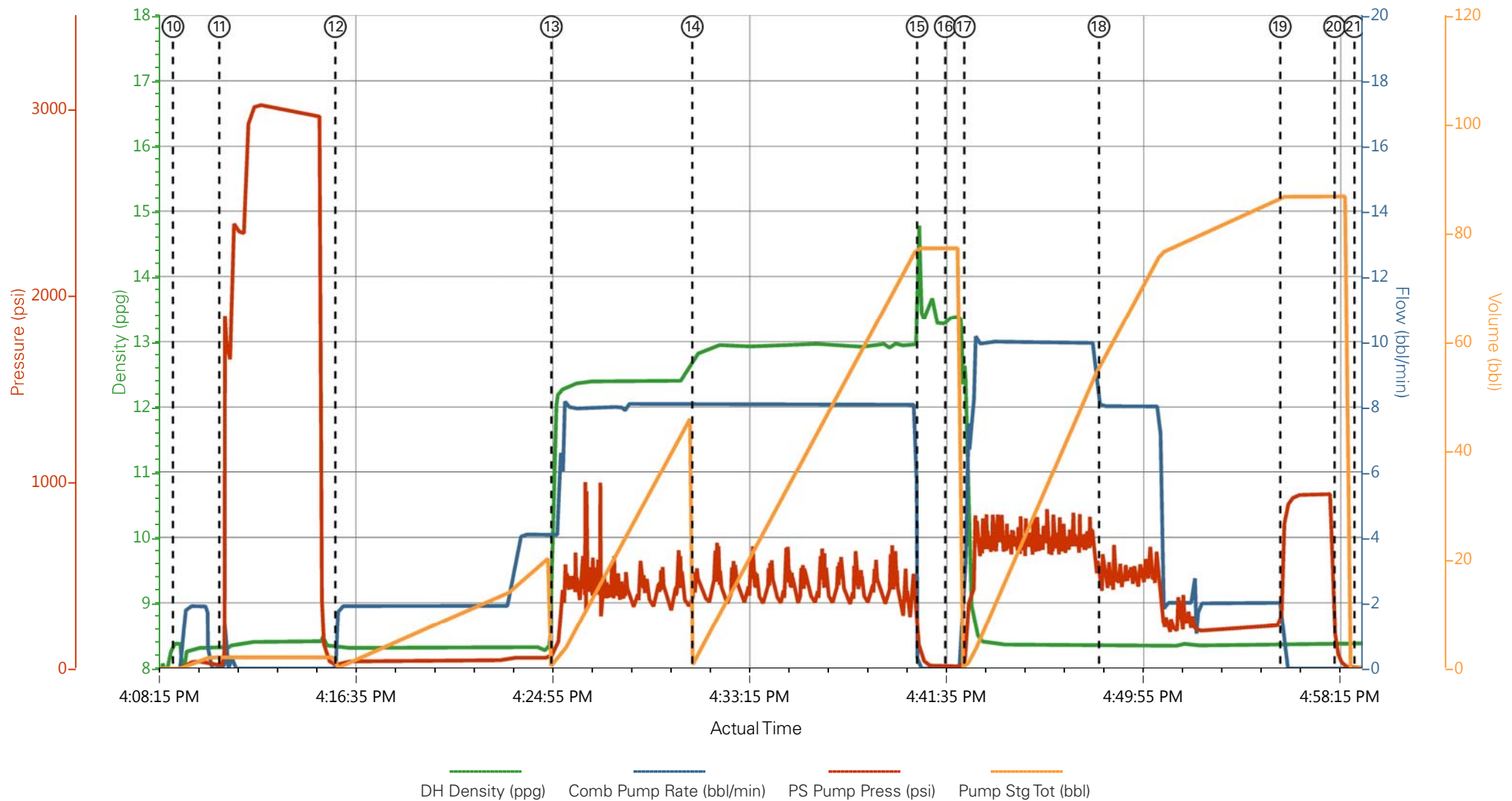
2.0 Real-Time Job Summary

2.1 Job Event Log

Type	Seq. No.	Graph Label	Date	Time	Source	DH Density (ppg)	Comb Pump Rate (bbl/min)	PS Pump Press (psi)	Pump Stg Tot (bbl)	Comments
Event	1	Call Out	10/21/2017	08:30:00	USER					
Event	2	Pre-Convoy Safety Meeting	10/21/2017	10:40:00	USER					
Event	3	Crew Leave Yard	10/21/2017	10:45:00	USER					
Event	4	Arrive At Loc	10/21/2017	12:00:00	USER					
Event	5	Assessment Of Location Safety Meeting	10/21/2017	12:05:00	USER					
Event	6	Spot Equipment	10/21/2017	12:10:00	USER					
Event	7	Pre-Rig Up Safety Meeting	10/21/2017	12:25:00	USER					
Event	8	Rig-Up Equipment	10/21/2017	12:30:00	USER					
Event	9	Pre-Job Safety Meeting	10/21/2017	14:00:00	USER					TD 1032', TP 1025.5', SJ 44.8', MUD 9.2 PPG, 9 5/8" CASING IN 13 1/2" OPEN HOLE, WATER TEMP 59, PH 6.4, CHLORIDES 0, SULFATES <200, POTASSIUM 450
Event	10	Start Job	10/21/2017	16:09:00	COM5					
Event	11	Test Lines	10/21/2017	16:10:58	COM5			3000.00		TEST LINES TO 3000 PSI

Event	12	Pump Spacer 1	10/21/2017	16:15:52	COM5	8.33	2.00	42.00	20.00	10 BBL FRESH WATER @ 8.33 PPG, 50 PSI
Event	13	Pump Lead Cement	10/21/2017	16:25:01	COM5	12.30	8.00	380.00	42.4	100 SKS @12.3 PPG, 2.38 YLD, 13.77 GAL/SK H2O REQ, 380 PSI
Event	14	Pump Tail Cement	10/21/2017	16:30:59	COM5	12.80	8.00	400.00	65.8	175 SKS @ 12.8 PPG, 2.11 YLD, 11.78 GAL/SK H2O REQ, 400PSI
Event	15	Shutdown	10/21/2017	16:40:29	USER					
Event	16	Drop Top Plug	10/21/2017	16:41:41	COM5					PLUG AWAY
Event	17	Pump Displacement	10/21/2017	16:42:29	COM5	8.33	10.00	600.00	77.2	77.2 BBLS FRESH WATER, 600 PSI
Event	18	Slow Rate	10/21/2017	16:48:11	USER	8.33	2.00	210.00	67.0	SLOW RATE @ 67 BBL AWAY TO 2 BBL/MIN
Event	19	Bump Plug	10/21/2017	16:55:51	COM5	8.33	2.00	717.00	77.2	PLUG BUMPED
Event	20	Check Floats	10/21/2017	16:58:09	USER					FLOATS HELD, 1/2 BBL BACK
Event	21	End Job	10/21/2017	16:59:00	COM5					GOOD CIRCULATION THROUGHOUT JOB, PIPE LEFT STATIC, 40 LBS SUGAR USED, NO ADD HOURS CHARGED
Event	22	Pre-Rig Down Safety Meeting	10/21/2017	17:15:00	USER					
Event	23	Rig-Down Equipment	10/21/2017	17:20:00	USER					THANK YOU FOR CHOOSING HALLIBURTON CEMENTING OF GRAND JUNCTION, CO -
Event	24	Pre-Convoy Safety Meeting	10/21/2017	18:00:00	USER					ANTHONY ANDREWS AND CREW
Event	25	Crew Leave Location	10/21/2017	18:05:00	USER					

TEP - GM 513-4 - 9 5/8 SURFACE CASING



- | | | | |
|---|--------------------------|---------------------|--------------------------------|
| ① Call Out | ⑧ Rig-Up Equipment | ⑮ Shutdown | 22 Pre-Rig Down Safety Meeting |
| ② Pre-Convoy Safety Meeting | ⑨ Pre-Job Safety Meeting | ⑯ Drop Top Plug | 23 Rig-Down Equipment |
| ③ Crew Leave Yard | ⑩ Start Job | ⑰ Pump Displacement | 24 Pre-Convoy Safety Meeting |
| ④ Arrive At Loc | ⑪ Test Lines | ⑱ Slow Rate | 25 Crew Leave Location |
| ⑤ Assessment Of Location Safety Meeting | ⑫ Pump Spacer 1 | ⑲ Bump Plug | |
| ⑥ Spot Equipment | ⑬ Pump Lead Cement | 20 Check Floats | |
| ⑦ Pre-Rig Up Safety Meeting | ⑭ Pump Tail Cement | 21 End Job | |

▼ **HALLIBURTON** | iCem[®] Service

Created: 2017-10-21 13:07:44, Version: 4.2.393

Edit

Customer : TEP ROCKY MOUNTAIN LLC-EBUS

Job Date : 10/21/2017 1:08:16 PM

Well : GM 513-4

Representative : CRAIG BORGSTEDE

Sales Order # : 904382717

ELITE 8 : TRAVIS BROWN / ANTHONY ANDREWS

TEP - GM 513-4 - 9 5/8 SURFACE CASING

