

Photo#1:

Overview of Location from Entry to Southwest.



December 7, 2017



COLORADO
Oil & Gas Conservation
Commission
Department of Natural Resources

Inspection Photos: Laramie Cascade Creek Loc#324314

Photo#2:

Overview of Location from West end of Pad to East.



December 7, 2017



COLORADO
Oil & Gas Conservation
Commission
Department of Natural Resources

Inspection Photos: Laramie Cascade Creek Loc#324314

Photo#3:

Aerial Google Earth view of Location.



December 7, 2017



COLORADO
Oil & Gas Conservation
Commission
Department of Natural Resources

Inspection Photos: Laramie Cascade Creek Loc#324314

Photo#4:

One of two Drains located at West edge of Pad; showing installation at top of Pad & flexible Pipe that conveys SW to bottom of Fill Slope; BMPs not properly Installed. Red line indicates erosion of Fill Slope .

Photo#5:



December 7, 2017

Photo#6:

One of two Drains located at West edge of Pad; showing installation at top of Pad & flexible Pipe that conveys SW to bottom of Fill Slope; BMPs not properly Installed per Good Engineering Practices.

Photo#7:

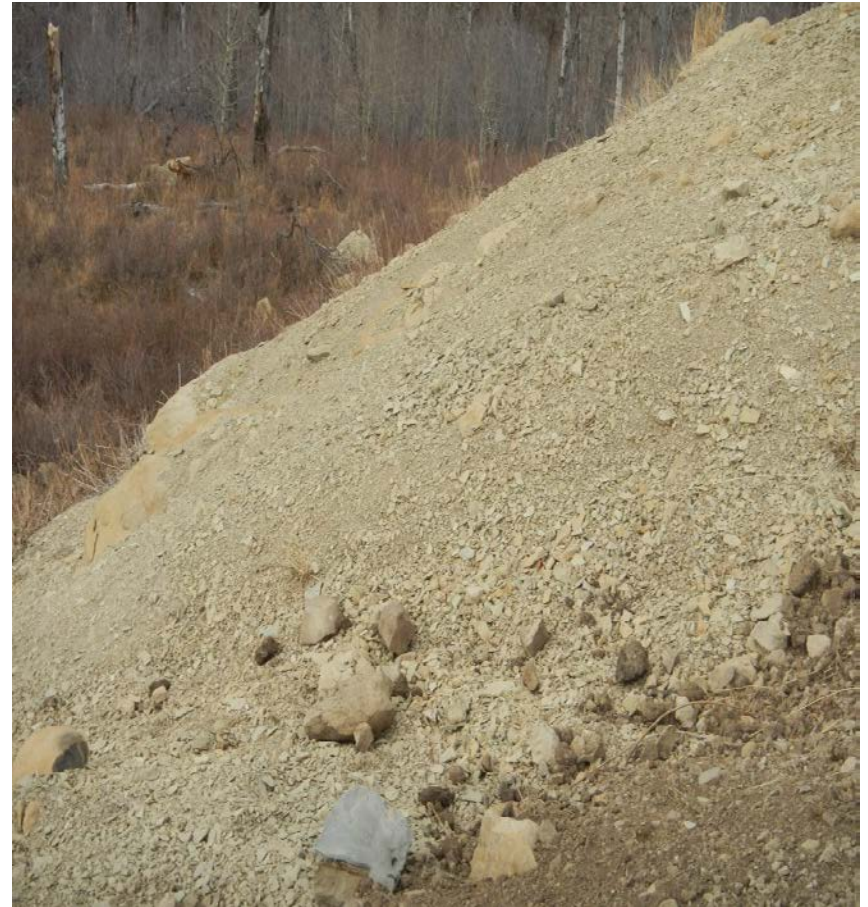


December 7, 2017

Photo#8:

Photo#9:

Views of Unstabilized overly Steep Fill Slopes.



December 7, 2017



COLORADO
Oil & Gas Conservation
Commission
Department of Natural Resources

Inspection Photos: Laramie Cascade Creek Loc#324314

Photo#10:

Cut Slope side of Access Road up at steeper section, has Sediment Migration occurring.

Photo#11:



December 7, 2017