

GOODWELL PERFORATORS

GREELEY COLORADO

SONIC CEMENT BOND

FILING NO.

COMPANY PRIMA OIL AND GAS COMPANY

WELL KNRUB #5-12

FIELD WITTENBERG

COUNTY WELD

STATE CO

LOCATION NW NE

OTHER SERVICE

PERF

SEC 5

TWP 4N

RGE 6SW

PERMANENT DATUM GROUND LEVEL ELEV 4673
LOG MEASURED FROM K.B. 10 FT. ABOVE PERMANENT DATUM
DRILLING MEASURED FROM KELLY BUSHING

ELEVATIONS
KB 4683
DF 4682
GL 4673

DATE 12-02-92

RUN NO. ONE

TYPE LOG GR CBL

DEPTH DRILLER 7174

DEPTH LOGGER 7182

BOTTOM LOGGED INT. 7178

TOP LOGGED INT. 3330

TYPE FLUID IN HOLE WATER

DENSITY

FLUID LEVEL FULL

MAX. HOLE TEMP. 255 F

TRUCK NO. 814

LOCATION GREELEY

RECORDED BY J. BULLARD

WITNESSED BY S. ELMORTHY

BORE HOLE RECORD

CASING RECORD

RUN	BIT	FROM	TO	SIZE	WT.	FROM	TO
ONE	12 1/4	000	322	8 5/8	24	000	322
TWO	7 7/8	322	7174	4 1/2+	12.6	000	T.D.

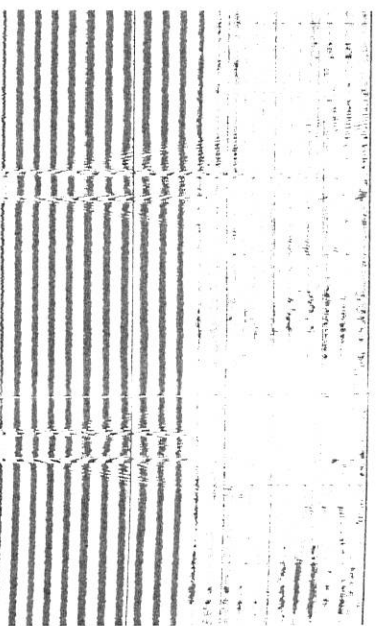
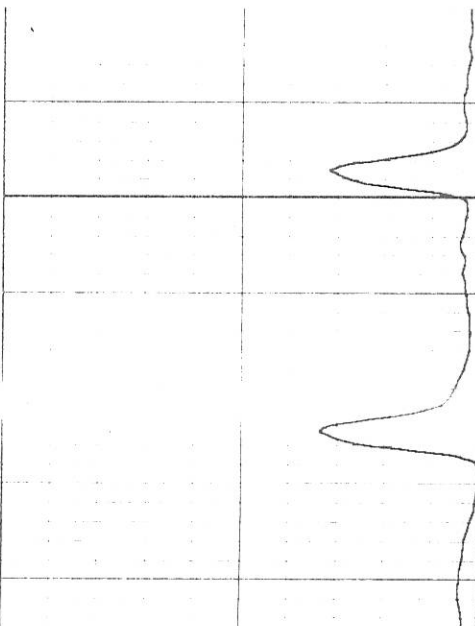
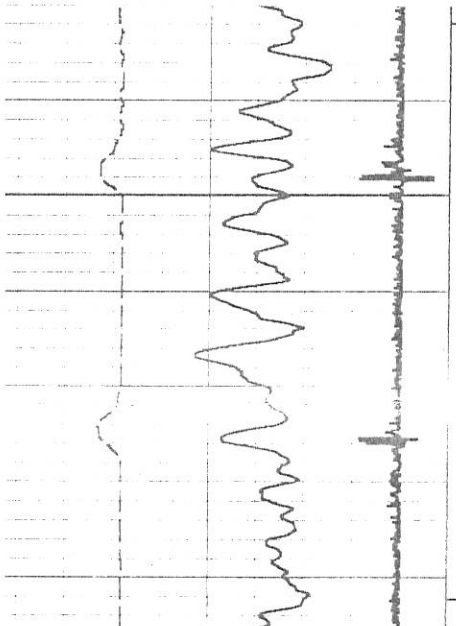
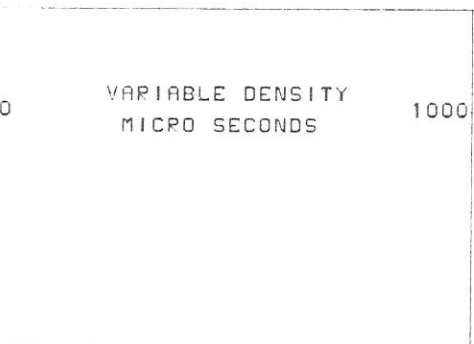
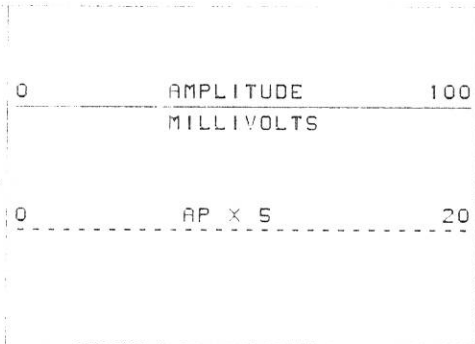
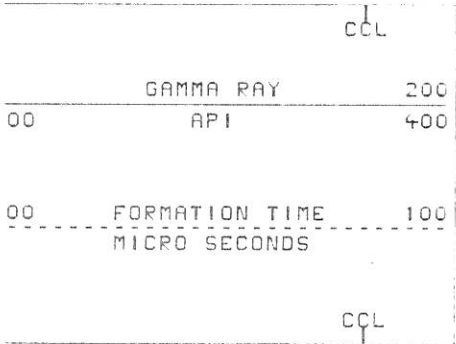
TOOL 2 1/8 COMPROBE SINGLE PECEIVER 3' SPACING

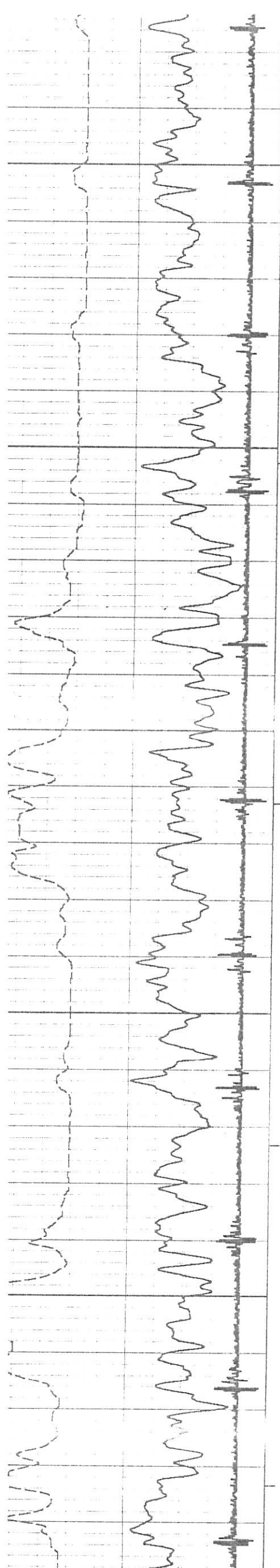
20 KILO HERTZ TRANSITTER AT 4 WATTS OUTPUT

SERIAL NUMBER 122843

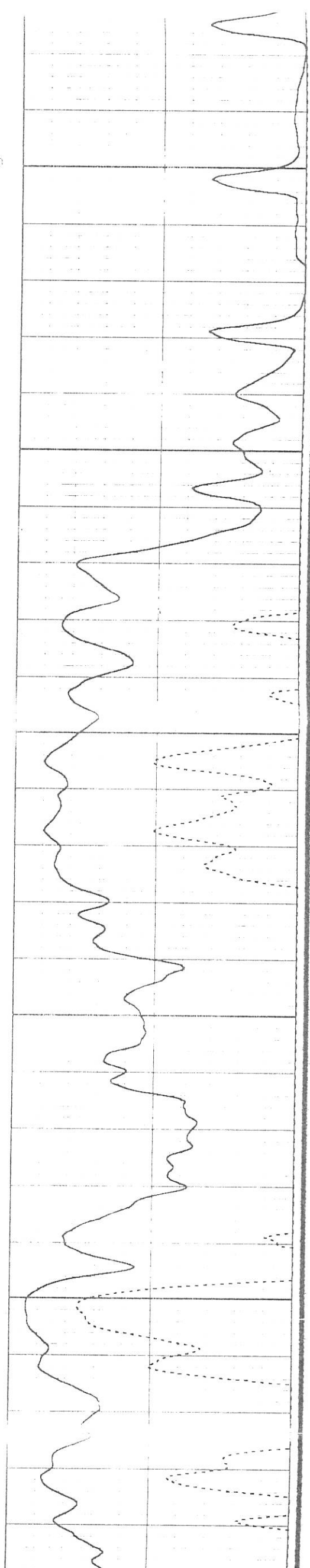
SCINTILLATION GAMMA RAY DETECTOR 1 FT.

THANK YOU FOR CALLING GOODWELL
303 353 5118

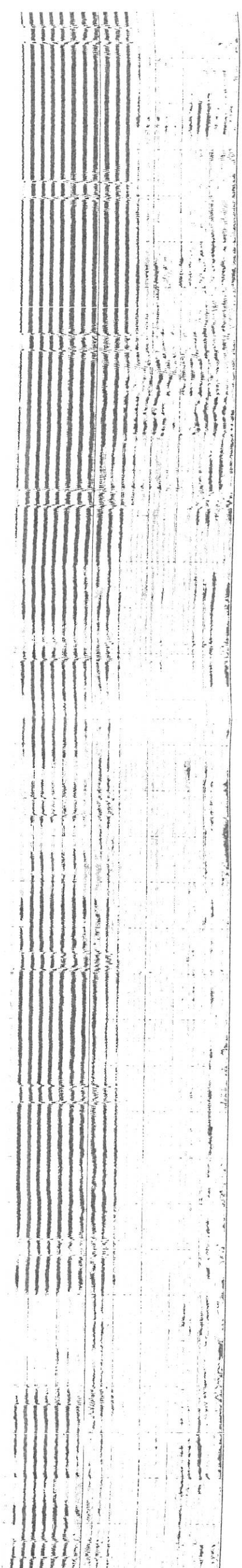


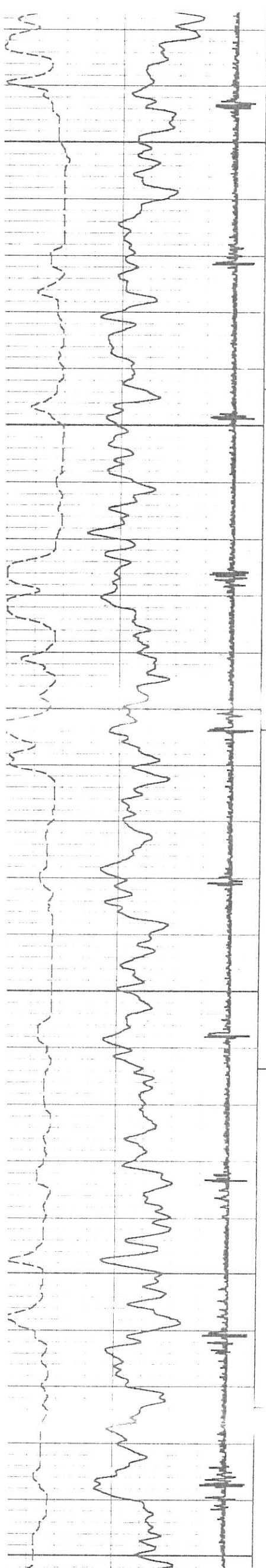


03400



03600

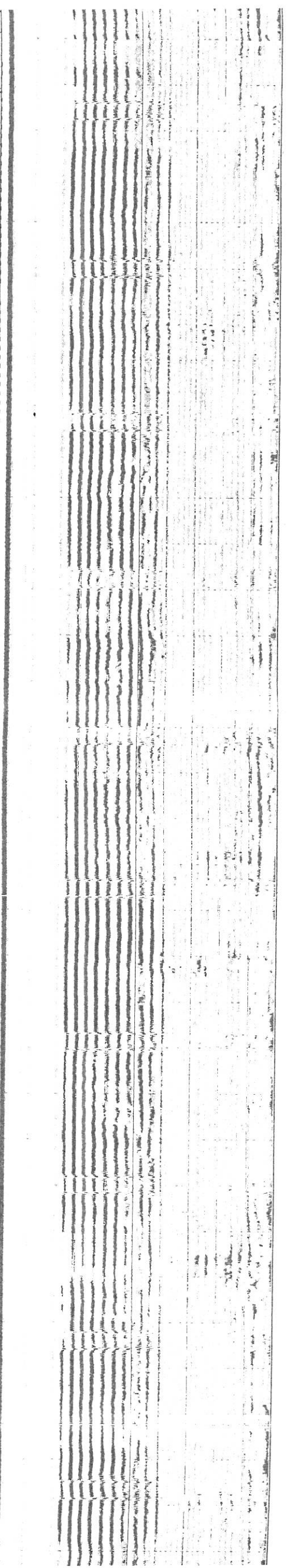
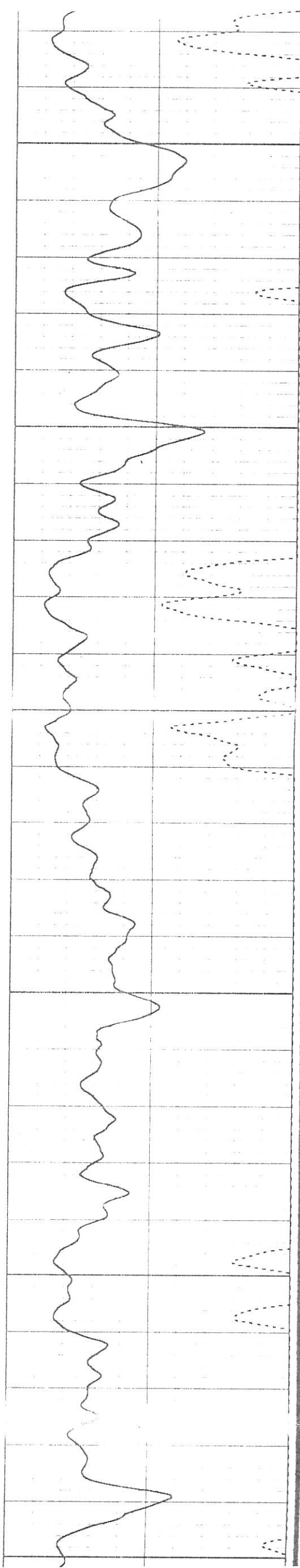


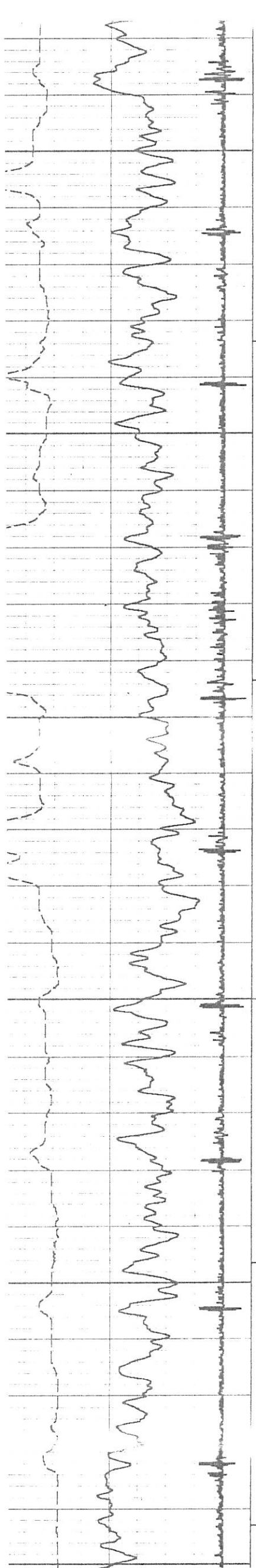


03700

03800

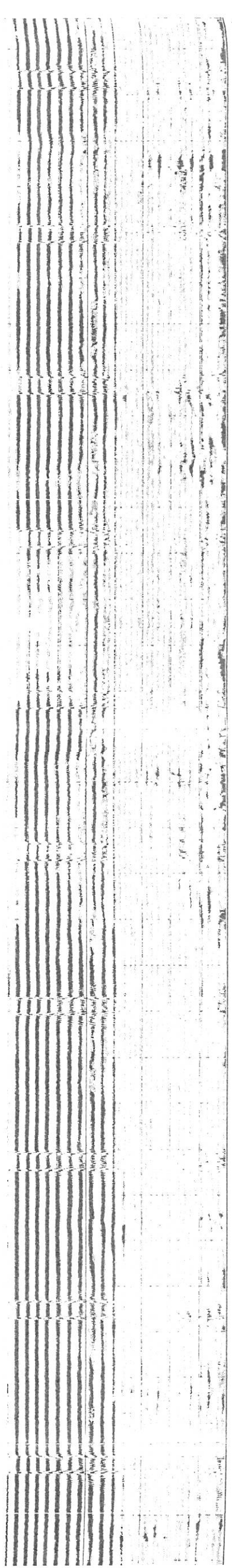
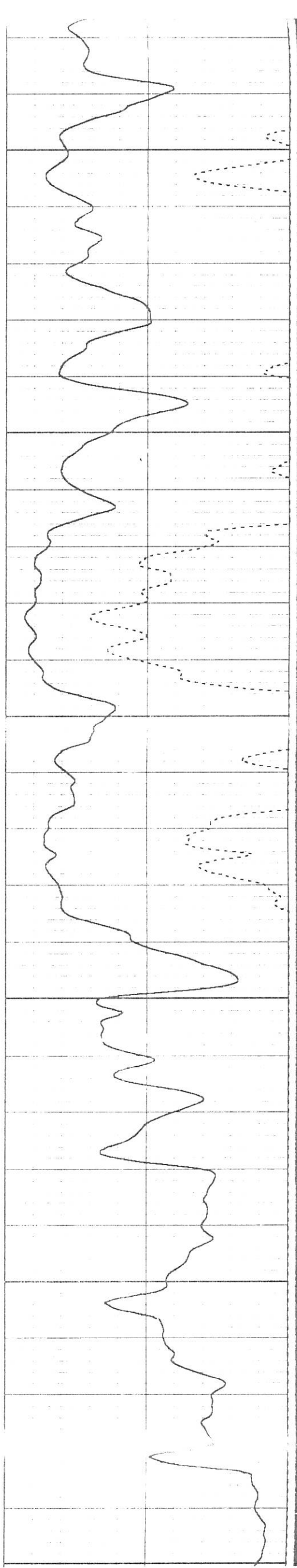
03900

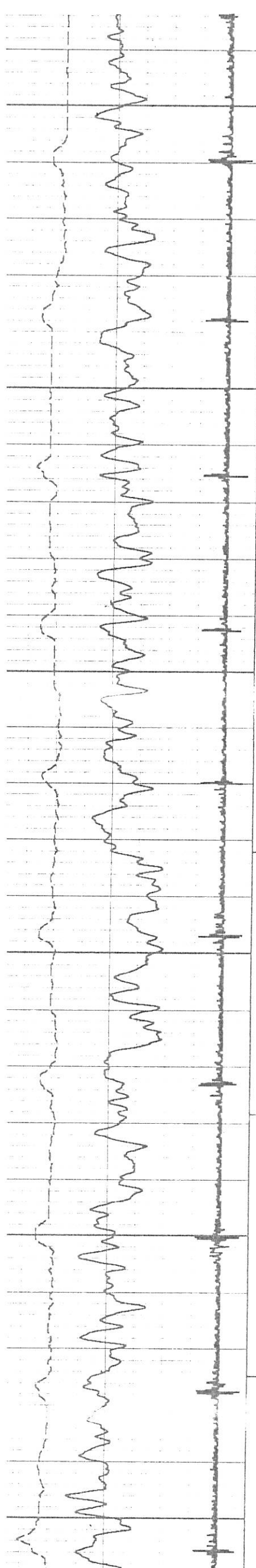




03900

04100

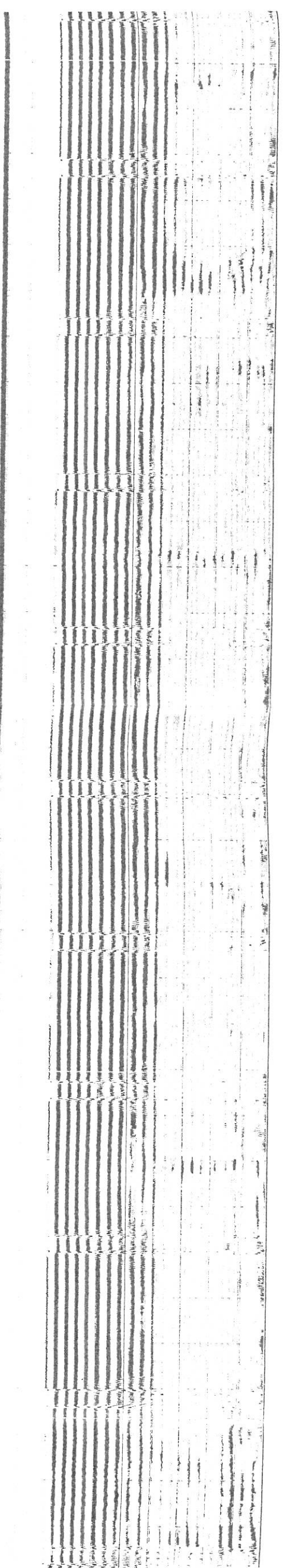
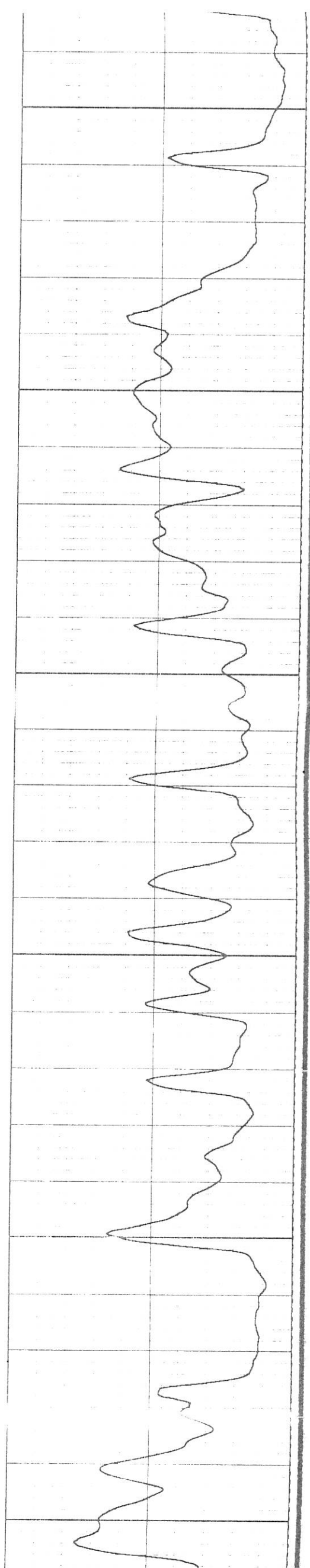


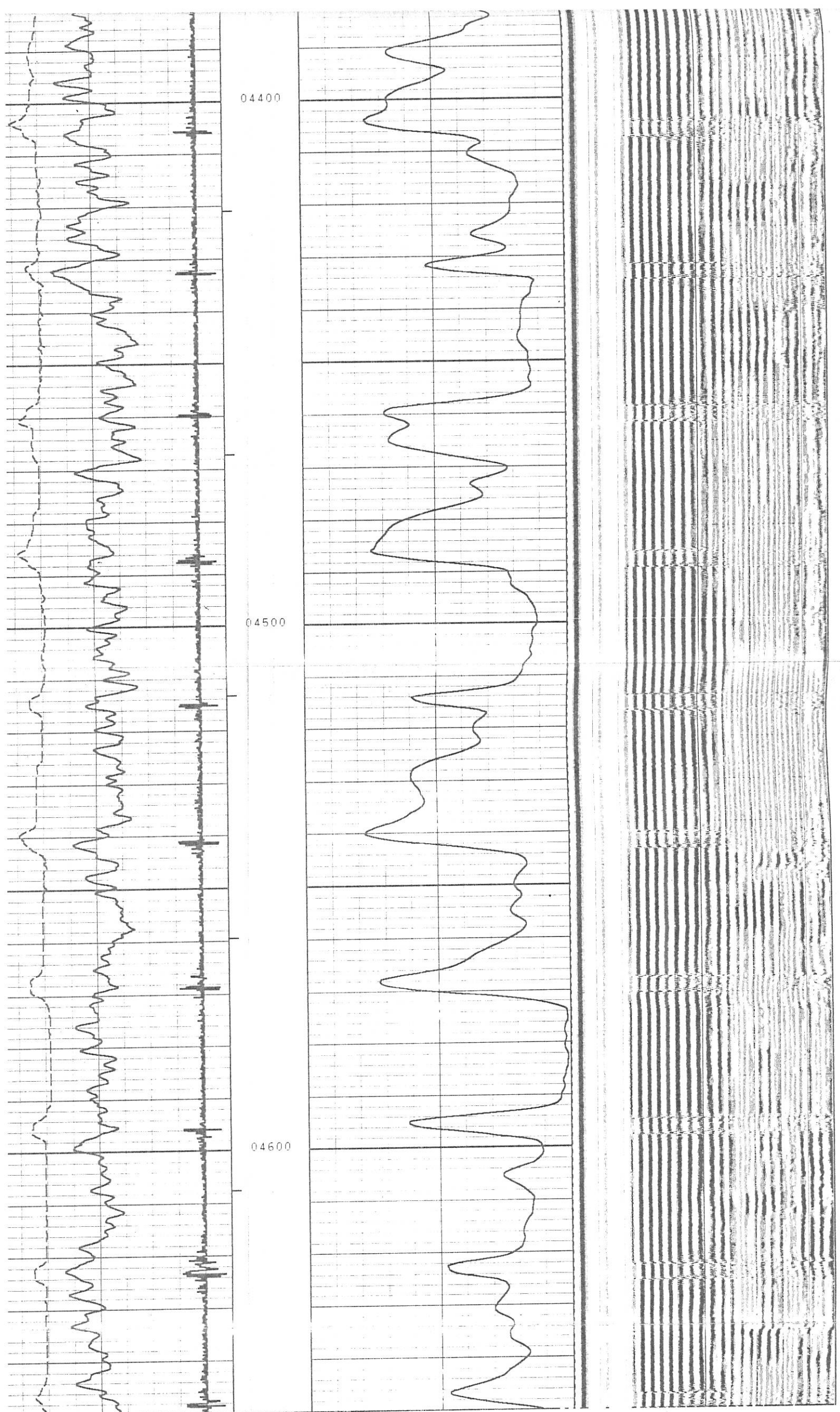


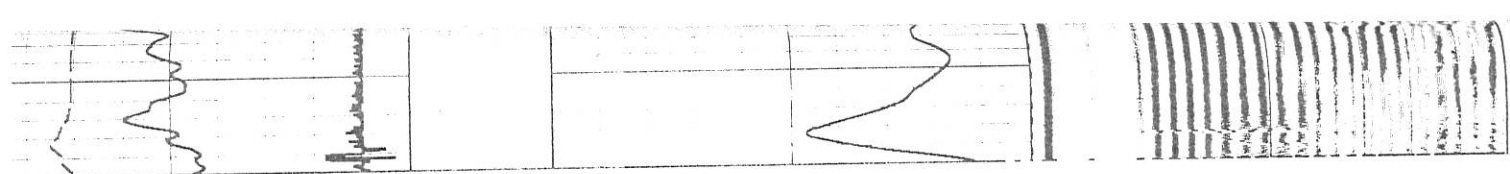
04200

04300

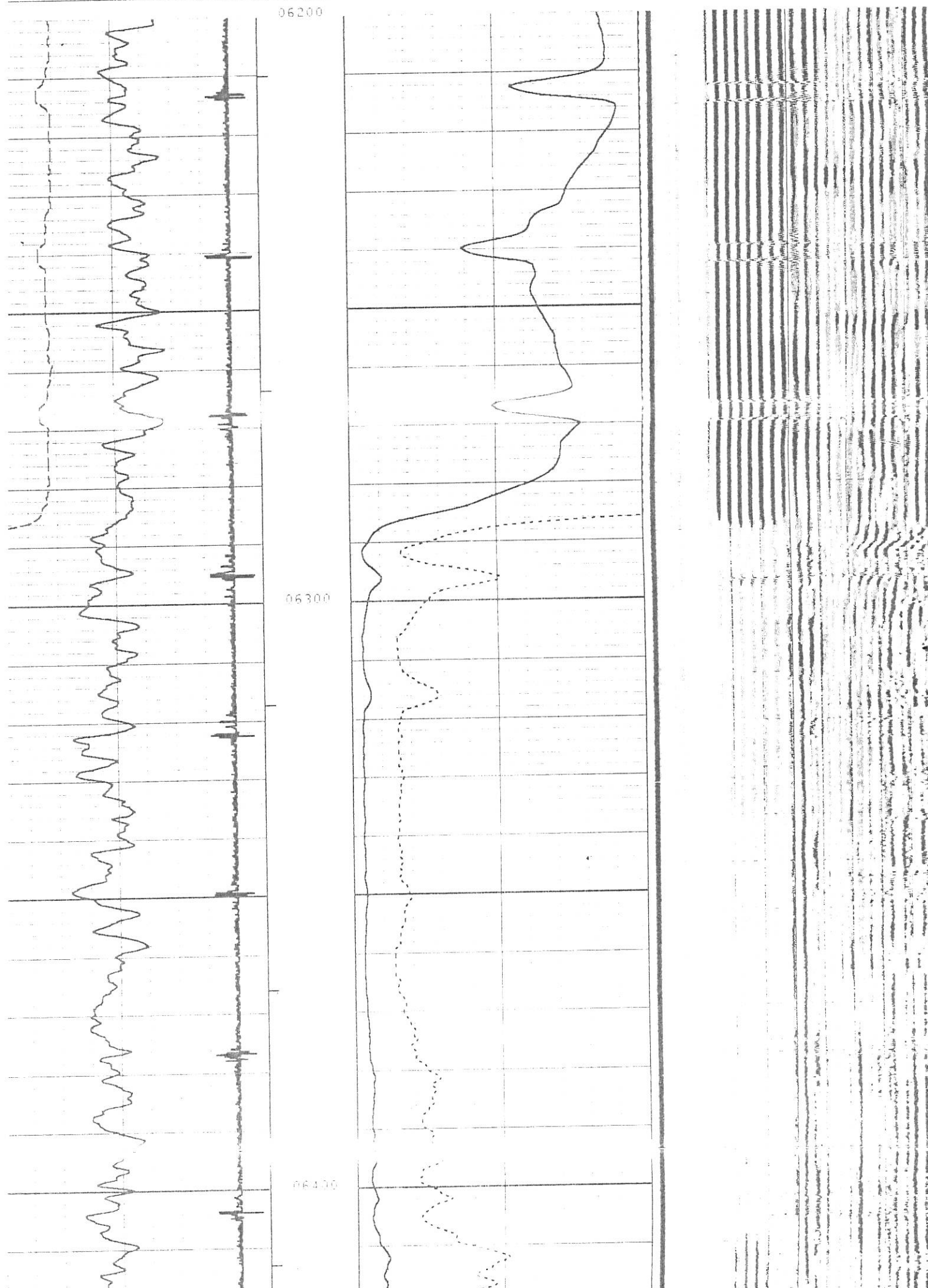
04400

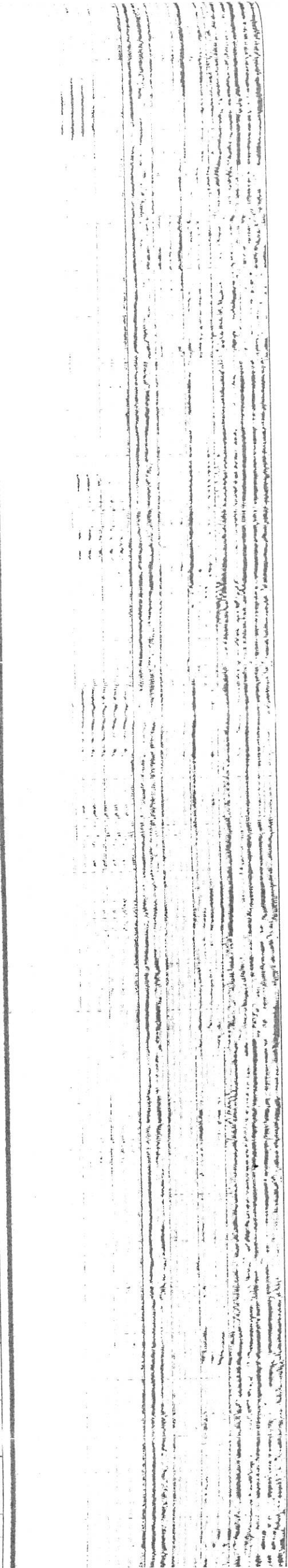
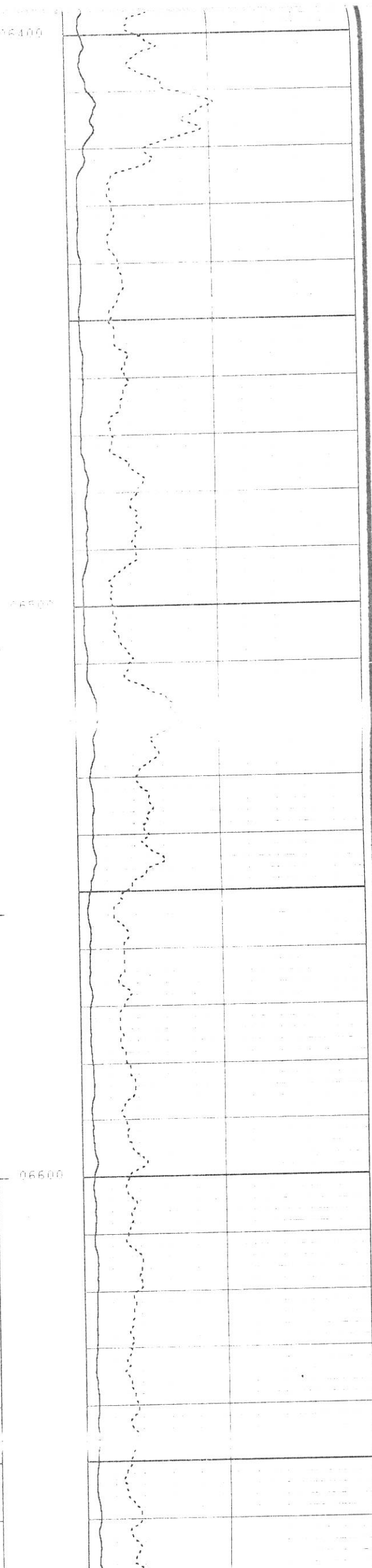
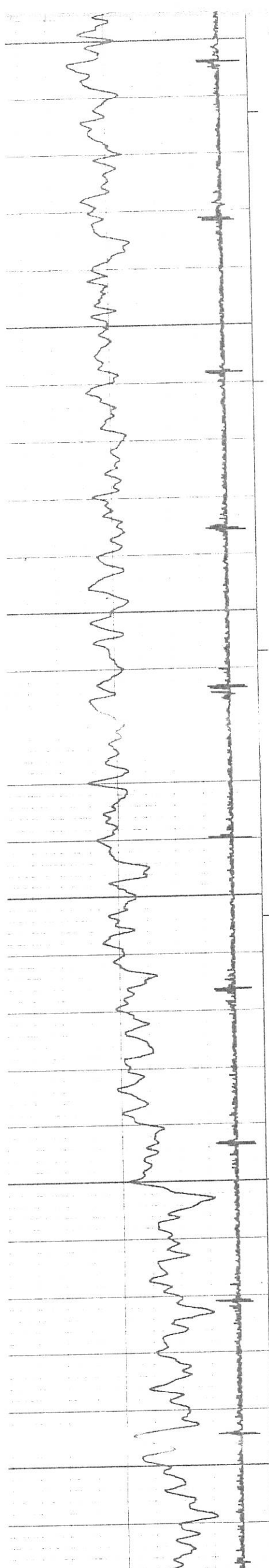


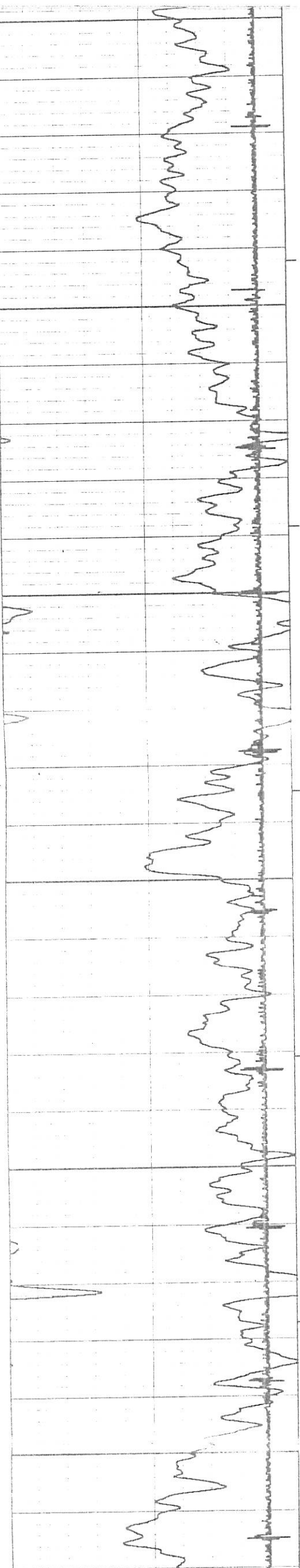




CCL							
GAMMA RAY	200	0	AMPLITUDE	100	0	VARIABLE DENSITY	1000
API	400			MILLIVOLTS		MICRO SECONDS	
FORMATION TIME							
MICRO SECONDS							
CCL							







06700

06800

