



GAMMA RAY / CCL  
CEMENT BOND  
VDL

Company Noble Energy Production Inc.		Well Pollack Haddix 34-1		Field Wattenberg		County Weld		State Colorado	
Company Noble Energy Production Inc.		Well Pollack Haddix 34-1		Field Wattenberg		County Weld		State Colorado	
Location:		SEC 34 TWP 4N RGE 64W		C - SW - NE		Other Services		Elevation	
Permanent Datum		GL		Elevation 4690'		K.B. 4703'		D.F. 4690'	
Log Measured From		KB							
Drilling Measured From		KB							
Date		October 16, 2006							
Run Number		one							
Depth Driller		6995'							
Bottom Logged Interval		5475'							
Top Log Interval		3600'							
Open Hole Size									
Type Fluid		water							
Density / Viscosity									
Max. Recorded Temp.									
Estimated Cement Top		3773'							
Time Well Ready									
Time Logger on Bottom									
Equipment Number		T2 TEK1/TITAN1 TEKCC1							
Location		WCR's 40+57, S3/10, W4/10 Sinto.							
Recorded By		R Meisner							
Witnessed By		Casey Ruppel							
Borehole Record		Tubing Record							
Run Number		From		To		Size		Weight	
Bit		From		To					
Size		Wgt/Ft		Top		Bottom			
Casing Record		Production String		Prot. String		Surface String		4.5"	
Inner									

<<< Fold Here >>>

All interpretations are opinions based on inferences from electrical or other measurements and we cannot and do not guarantee the accuracy or correctness of any interpretation, and we shall not, except in the case of gross or willful negligence on our part, be liable or responsible for any loss, costs, damages, or expenses incurred or sustained by anyone resulting from any interpretation made by any of our officers, agents or employees. These interpretations are also subject to our general terms and conditions set out in our current Price Schedule.

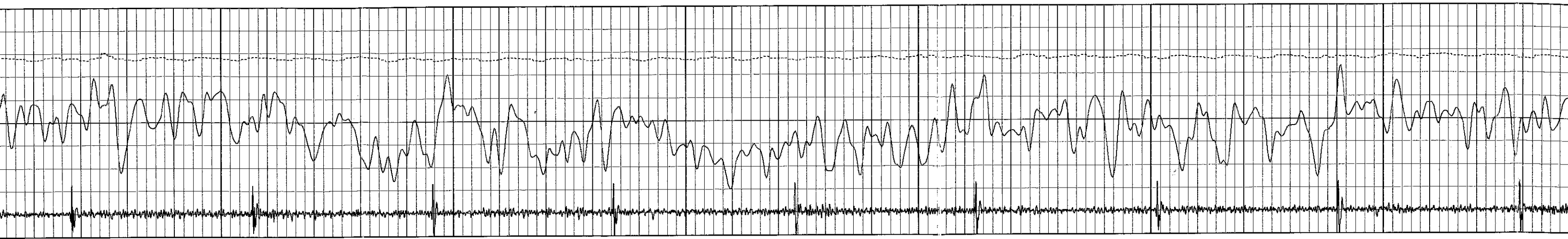
Comments

THANK-YOU FOR USING "NUEX" WIRELINE SERVICES INC. !!!  
STERLING: 970.526.1084 FAX: 970.526.1085  
FORT LUPTON: 970.785.0158 FAX: 970.970.0159

Database File: nobph341.db  
Dataset Pathname: pass1  
Presentation Format: bond  
Dataset Creation: Mon Oct 16 07:22:13 2006 by Log 6.2\_B4  
Charted by: Depth in Feet scaled 1:240

9	CCL	-1	0	Amplitude (Pipe Bond) (mV)	95	300	Variable Density	1200
30	Gamma Ray (GAP)	130	0	Amplified Amplitude (mV)	10			
30	Line Speed (ft/min)	230						

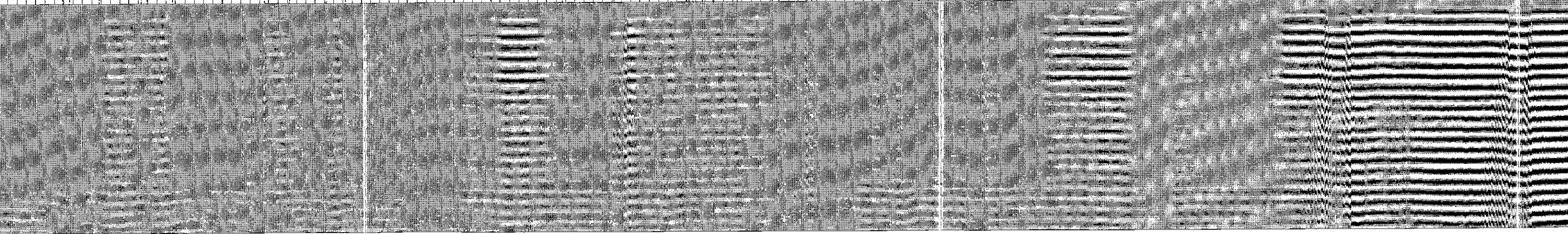
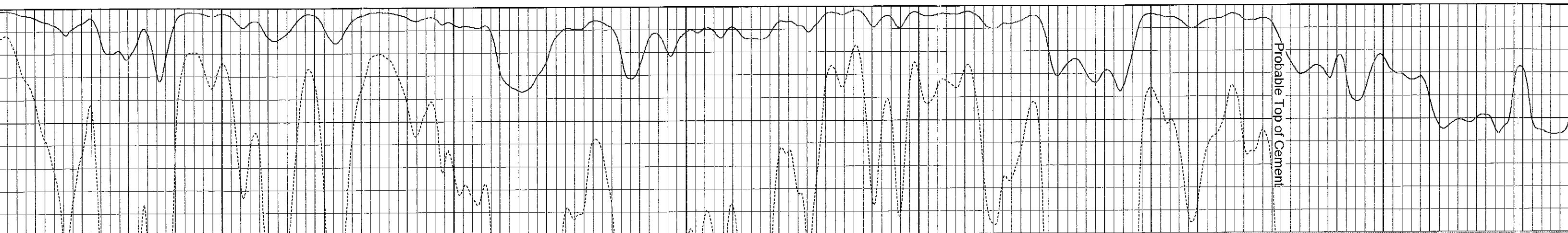


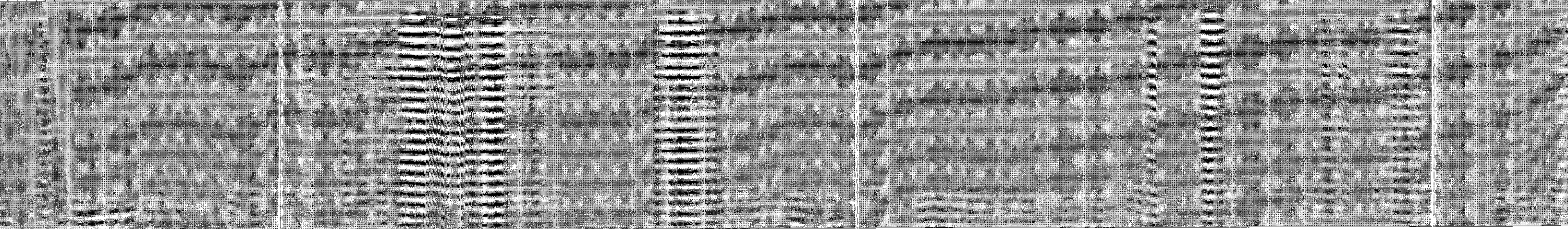
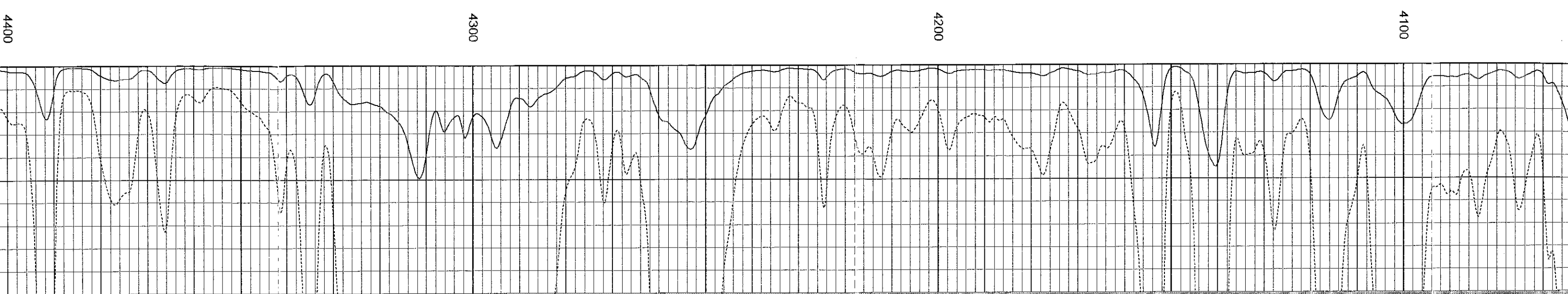
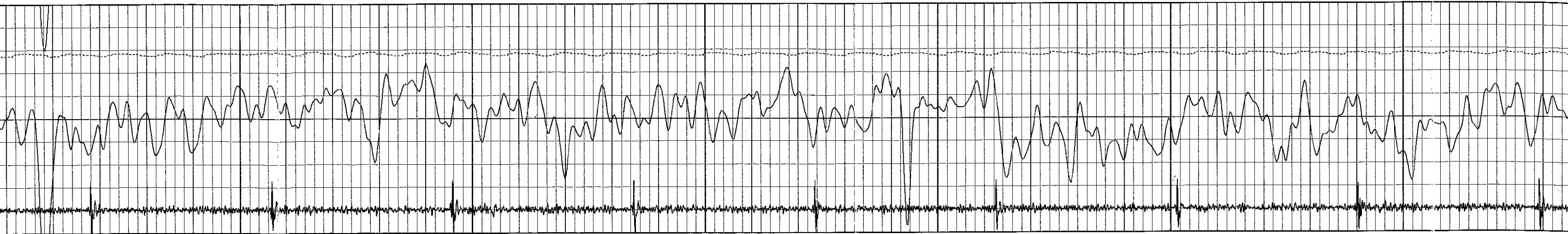


4000

3900

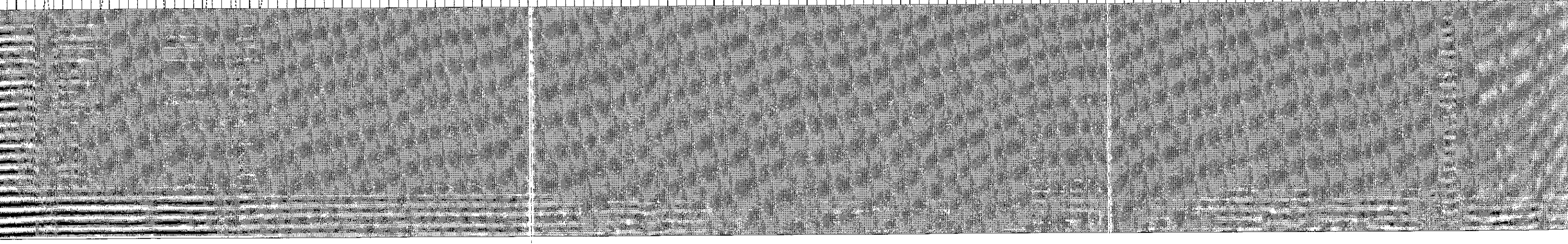
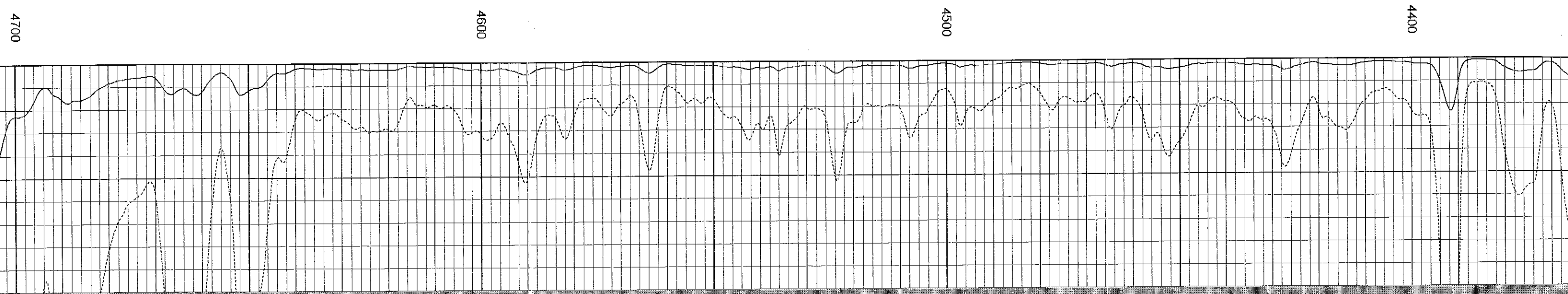
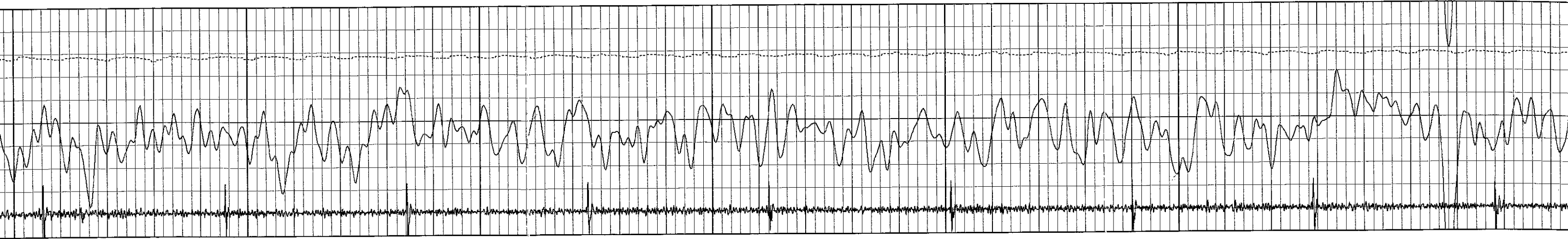
3800





4400 4300 4200 4100



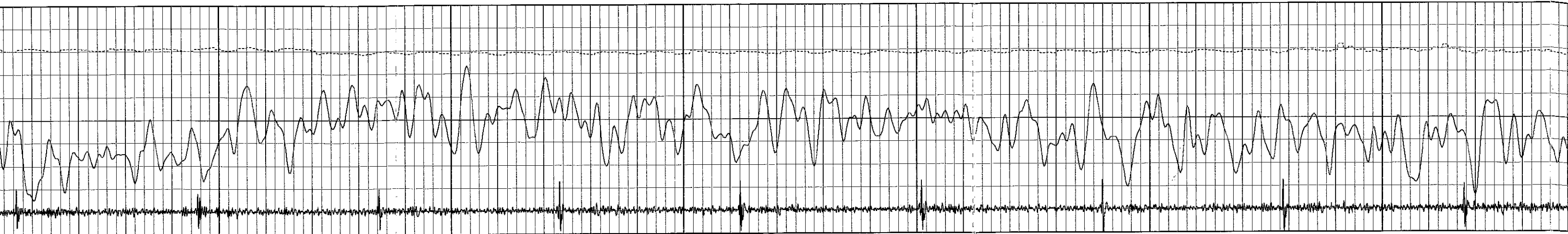


4400

4500

4600

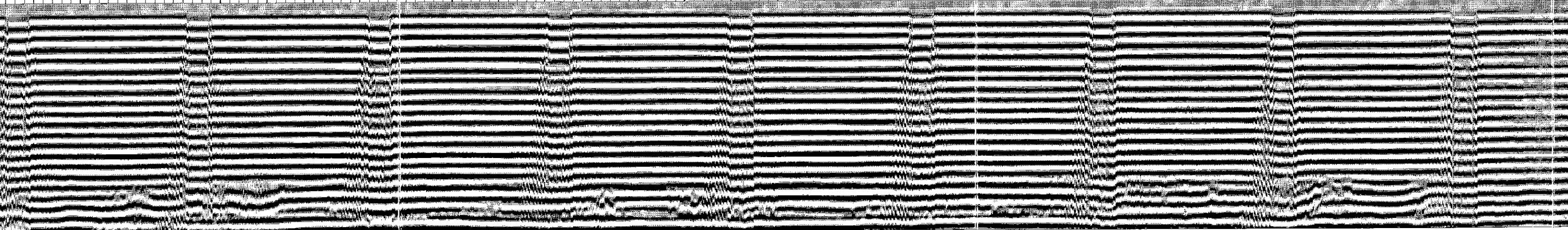
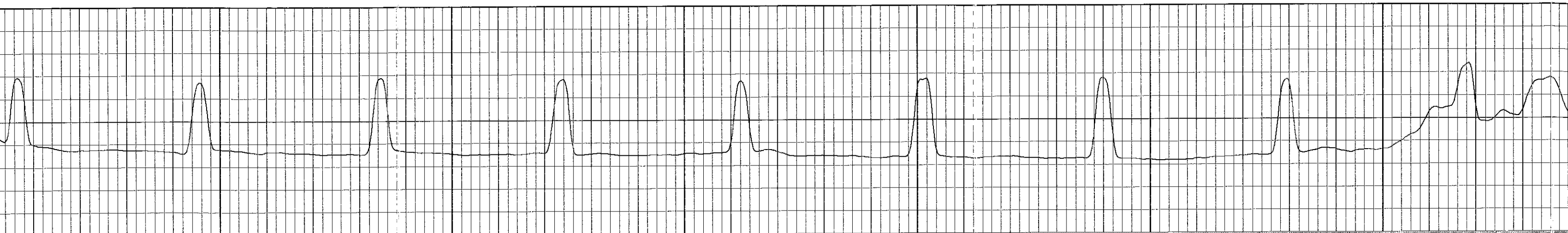
4700

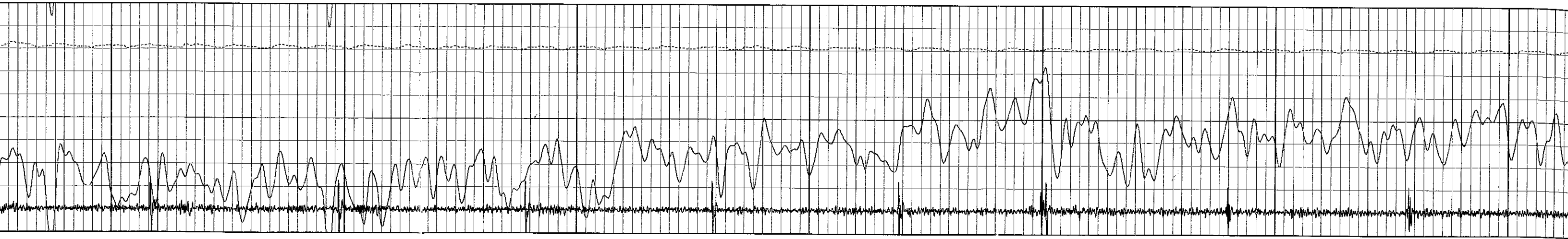


5000

4900

4800



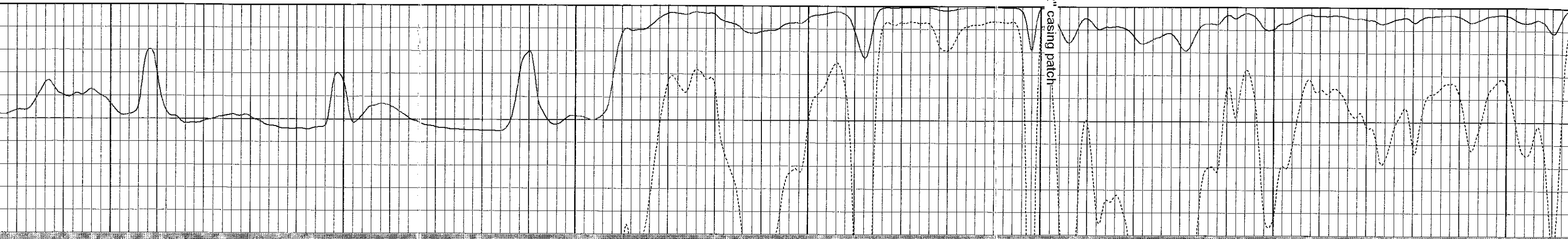


5400

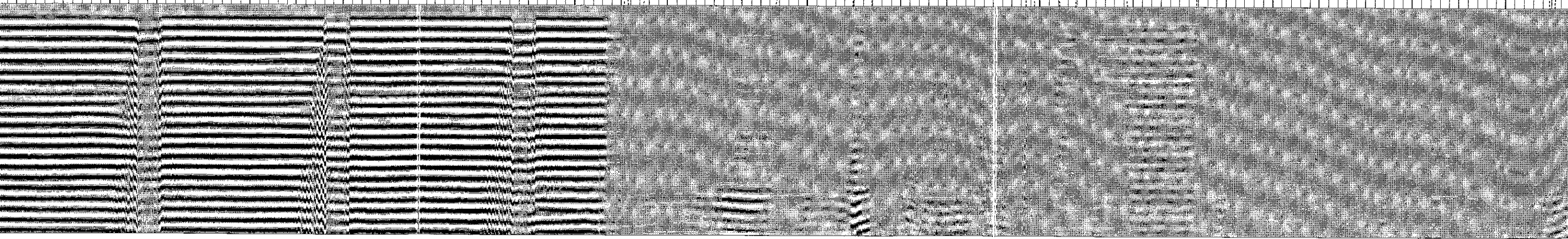
5300

5200

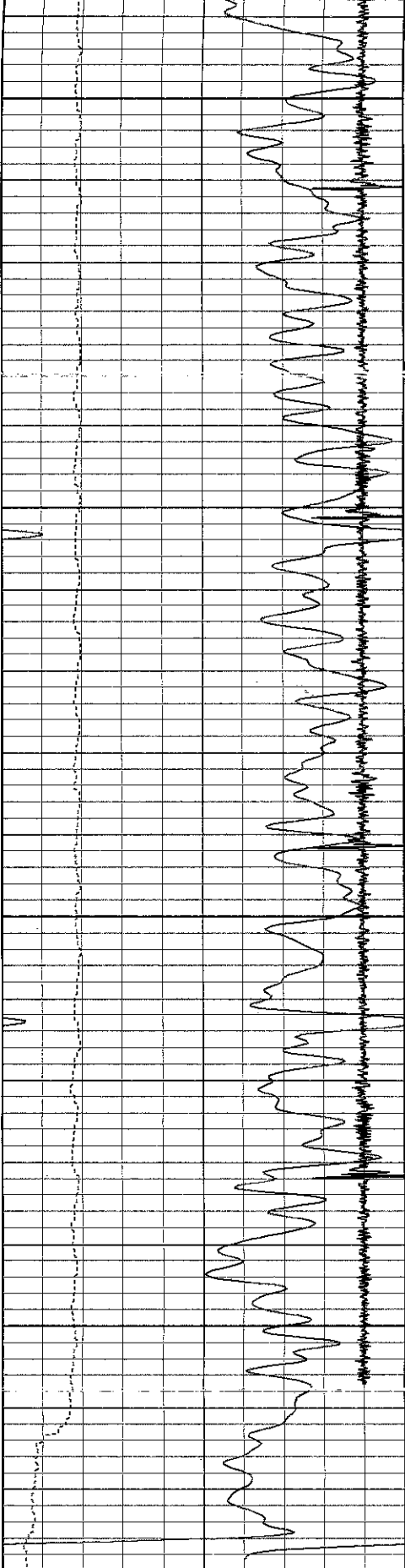
5100



4-1/2" casing patch



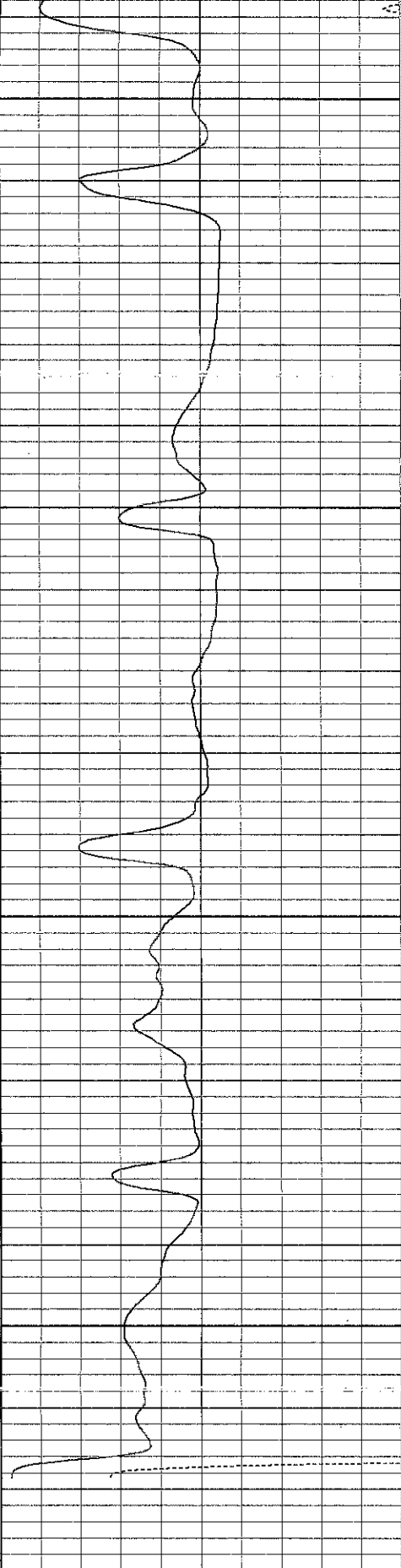




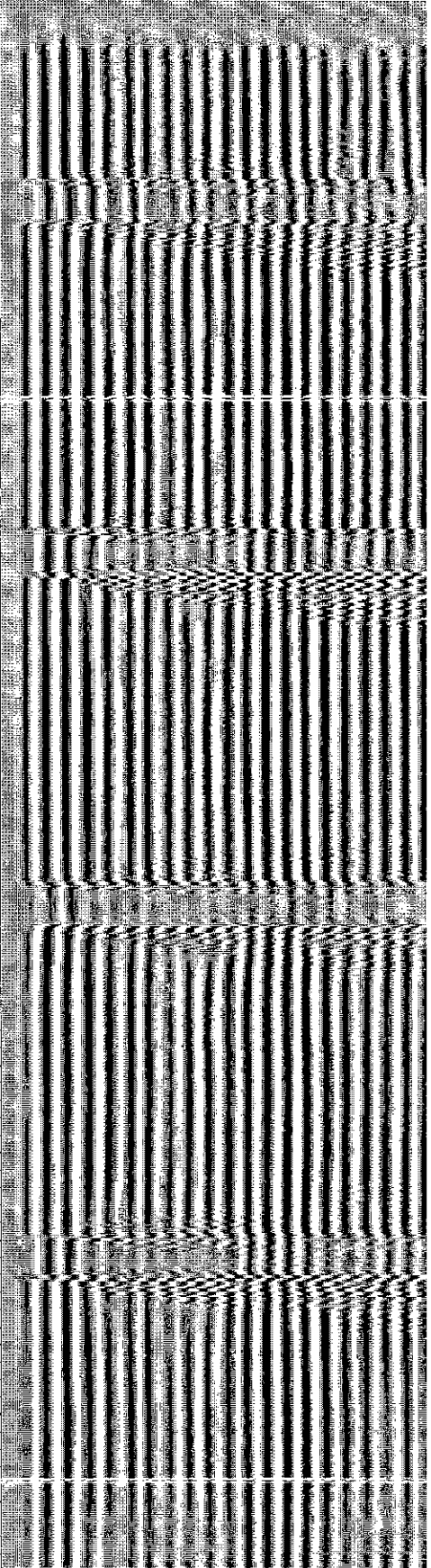
5300

5400

9	CCL	-1
30	Gamma Ray (GAPI)	130
30	Line Speed (ft/min)	230



0	Amplitude (Pipe Bond) (mV)	95
0	Amplified Amplitude (mV)	10



300 Variable Density 1200