

# **US ROCKIES WATTENBERG PLANNING**

**WELD-NAD83-UTMFT13N  
2N-65W-25 Zelda 29-25HZ Pad  
ZELDA 25-10HZ**

**Plan A**

**Plan: Permit Rev-1**

SHL Latitude/Longitude: 40.115728/-104.617118  
Survey Program: MWD+IFR+MSA

## **Standard Planning Report**

**21 August, 2017**

Project: WELD-NAD83-UTMFT13N  
Site: 2N-65W-25 Zelda 29-25HZ Pad  
Well: ZELDA 25-10HZ  
Wellbore: Plan A  
Design: Permit Rev-1

# US ROCKIES WATTENBERG PLANNING

## CASING DETAILS

TVD	MD	Size
1500.00	1523.46	9-5/8
7042.00	7675.24	5-1/2

WELL DETAILS: ZELDA 25-10HZ

GL = 4903'

RKB = 17' @ 4920.00usft (Drilling Rig)

## SECTION DETAILS

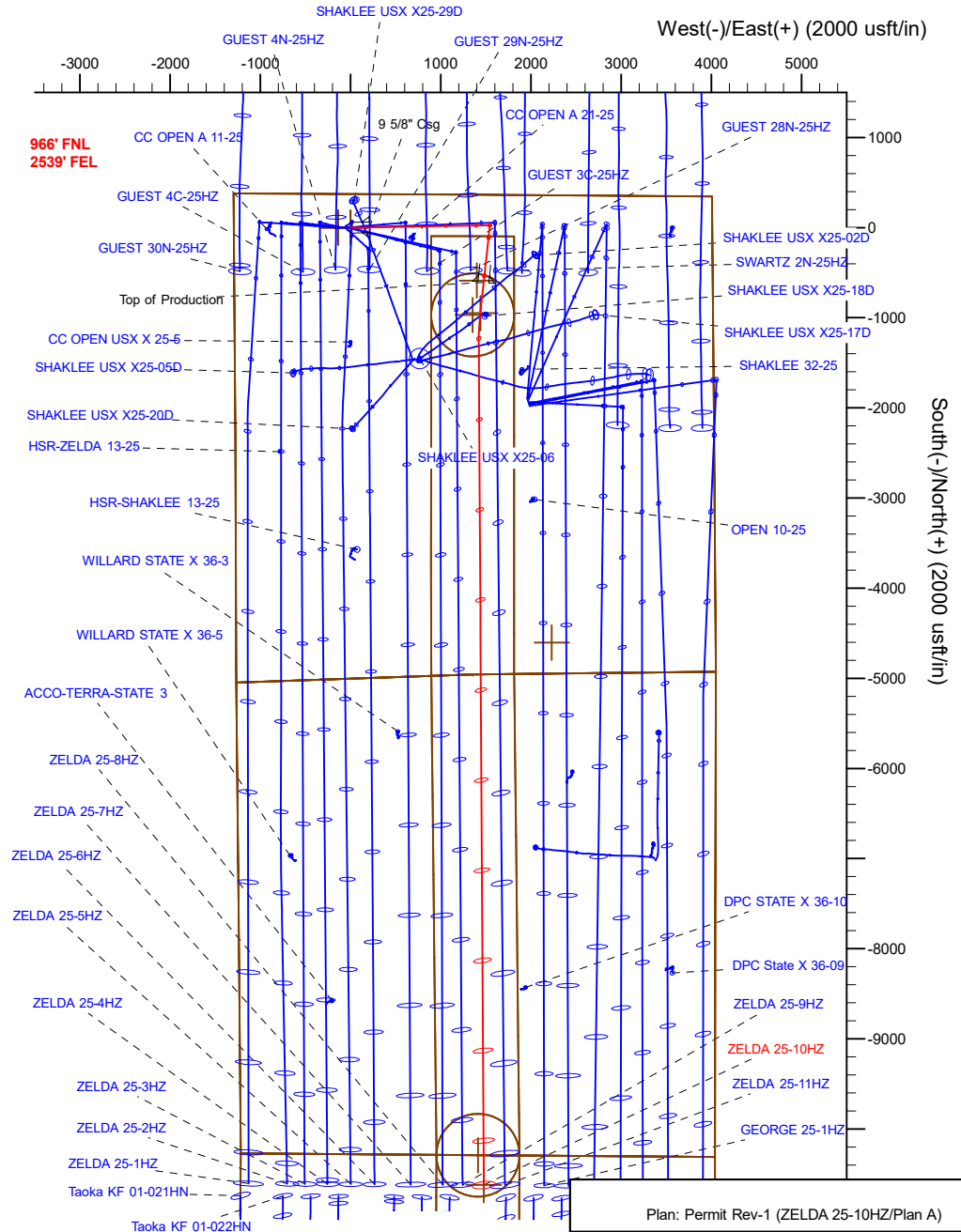
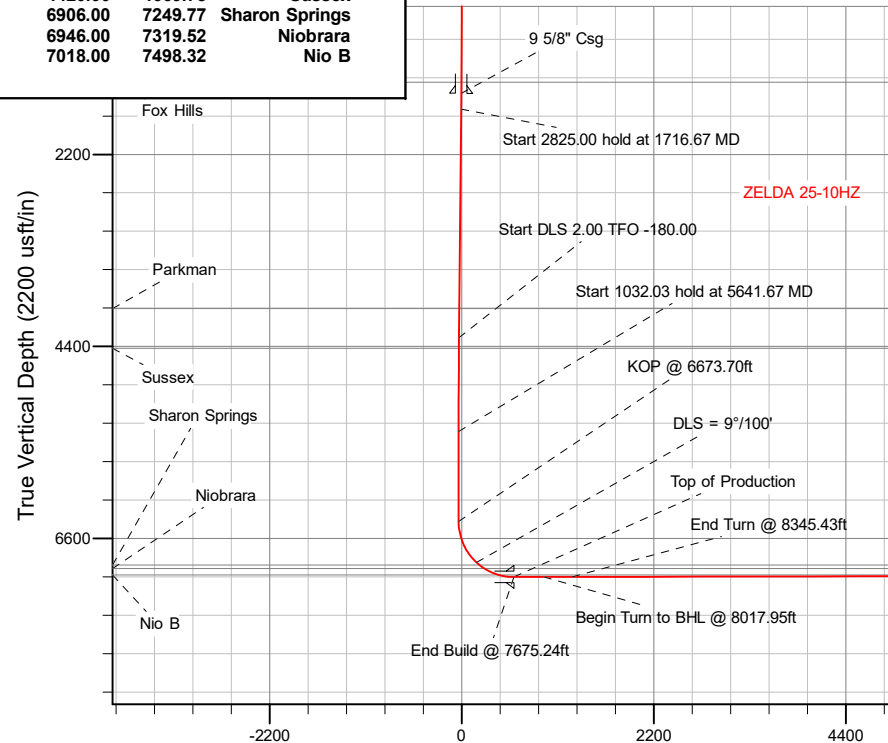
Sec	MD	Inc	Azi	TVD	+N/-S	+E/-W	Dleg	TFace	Vsect	Target
1	0.00	0.00	0.00	0.00	0.00	0.00	0.00	0.00	0.00	
2	250.00	0.00	0.00	250.00	0.00	0.00	0.00	0.00	0.00	
3	1716.67	22.00	89.00	1680.89	4.85	278.09	1.50	89.00	-6.60	
4	4541.67	22.00	89.00	4300.19	23.32	1336.20	0.00	0.00	-31.72	
5	5641.67	0.00	0.00	5373.36	26.96	1544.77	2.00	-180.00	-36.67	
6	6673.70	0.00	0.00	6405.39	26.96	1544.77	0.00	0.00	-36.67	
7	7675.24	90.14	186.21	7042.00	-607.46	1475.73	9.00	186.21	598.17	
8	8017.95	90.14	186.21	7041.17	-948.15	1438.66	0.00	0.00	939.09	ZELDA 25-10HZ_tgt
9	8345.43	90.13	179.66	7040.40	-1275.02	1421.90	2.00	-90.06	1266.06	
10	17691.50	90.13	179.66	7019.00	-10620.91	1477.24	0.00	0.00	10611.42	ZELDA 25-10HZ_BHL

## WELLBORE TARGET DETAILS (LAT/LONG)

Name	TVD	+N/-S	+E/-W	Latitude	Longitude
ZELDA 25-10HZ_SHL	0.00	0.00	0.00	40.115728	-104.617118
ZELDA 25-10HZ_BHL	7019.00	-10620.91	1477.24	40.086562	-104.611836

## FORMATION TOP DETAILS

TVDPath	MDPath	Formation
1372.00	1388.80	Fox Hills
3967.00	4182.31	Parkman
4420.00	4669.78	Sussex
6906.00	7249.77	Sharon Springs
6946.00	7319.52	Niobrara
7018.00	7498.32	Nio B



Plan: Permit Rev-1 (ZELDA 25-10HZ/Plan A)

Created By: \_\_\_\_\_ Date: 8/21/2017  
Reviewed: \_\_\_\_\_ Date: \_\_\_\_\_

## Corporate Planning Report

<b>Database:</b>	PLANNING	<b>Local Co-ordinate Reference:</b>	Well ZELDA 25-10HZ
<b>Company:</b>	US ROCKIES WATTENBERG PLANNING	<b>TVD Reference:</b>	RKB = 17' @ 4920.00usft (Drilling Rig)
<b>Project:</b>	WELD-NAD83-UTMFT13N	<b>MD Reference:</b>	RKB = 17' @ 4920.00usft (Drilling Rig)
<b>Site:</b>	2N-65W-25 Zelda 29-25HZ Pad	<b>North Reference:</b>	True
<b>Well:</b>	ZELDA 25-10HZ	<b>Survey Calculation Method:</b>	Minimum Curvature
<b>Wellbore:</b>	Plan A		
<b>Design:</b>	Permit Rev-1		

<b>Project</b>	WELD-NAD83-UTMFT13N		
<b>Map System:</b>	Universal Transverse Mercator (US Survey Feet)	<b>System Datum:</b>	Mean Sea Level
<b>Geo Datum:</b>	North American Datum 1983		
<b>Map Zone:</b>	Zone 13N (108 W to 102 W)		

Site	2N-65W-25 Zelda 29-25HZ Pad				
Site Position:		Northing:	14,569,106.11 usft	Latitude:	40.115731
From:	Lat/Long	Easting:	1,747,327.27 usft	Longitude:	-104.617600
Position Uncertainty:	0.00 usft	Slot Radius:	13-3/16 "	Grid Convergence:	0.25

Well	ZELDA 25-10HZ					
Well Position	+N-S	-1.09 usft	Northing:	14,569,105.59 usft	Latitude:	40.115728
	+E-W	134.76 usft	Easting:	1,747,462.03 usft	Longitude:	-104.617118
Position Uncertainty		3.28 usft	Wellhead Elevation:		Ground Level:	4,903.00 usft

<b>Wellbore</b>	Plan A				
<b>Magnetics</b>	<b>Model Name</b>	<b>Sample Date</b>	<b>Declination (°)</b>	<b>Dip Angle (°)</b>	<b>Field Strength (nT)</b>
	IGRF2010	8/16/2017	7.93	66.63	52,347.25986421

<b>Design</b>	Permit Rev-1				
<b>Audit Notes:</b>					
<b>Version:</b>		<b>Phase:</b>	PLAN	<b>Tie On Depth:</b>	0.00
<b>Vertical Section:</b>	<b>Depth From (TVD) (usft)</b>	<b>+N/-S (usft)</b>	<b>+E/-W (usft)</b>	<b>Direction (°)</b>	
	0.00	0.00	0.00	180.36	

<b>Plan Survey Tool Program</b>		<b>Date</b>	8/21/2017		
<b>Depth From (usft)</b>	<b>Depth To (usft)</b>	<b>Survey (Wellbore)</b>	<b>Tool Name</b>	<b>Remarks</b>	
1	0.00	1,500.00	Permit Rev-1 (Plan A)	APC_ISCWSA REV 2 MWD+II Fixed:v2:crustal field declinatio	
2	1,500.00	17,691.50	Permit Rev-1 (Plan A)	APC_ISCWSA REV 2 MWD+II Fixed:v2:Rockies, crustal dec +	

## Corporate Planning Report

<b>Database:</b>	PLANNING	<b>Local Co-ordinate Reference:</b>	Well ZELDA 25-10HZ
<b>Company:</b>	US ROCKIES WATTENBERG PLANNING	<b>TVD Reference:</b>	RKB = 17' @ 4920.00usft (Drilling Rig)
<b>Project:</b>	WELD-NAD83-UTMFT13N	<b>MD Reference:</b>	RKB = 17' @ 4920.00usft (Drilling Rig)
<b>Site:</b>	2N-65W-25 Zelda 29-25HZ Pad	<b>North Reference:</b>	True
<b>Well:</b>	ZELDA 25-10HZ	<b>Survey Calculation Method:</b>	Minimum Curvature
<b>Wellbore:</b>	Plan A		
<b>Design:</b>	Permit Rev-1		

Plan Sections										
Measured Depth (usft)	Inclination (°)	Azimuth (°)	Vertical Depth (usft)	+N/-S (usft)	+E/-W (usft)	Dogleg Rate (°/100usft)	Build Rate (°/100usft)	Turn Rate (°/100usft)	TFO (°)	Target
0.00	0.00	0.00	0.00	0.00	0.00	0.00	0.00	0.00	0.00	
250.00	0.00	0.00	250.00	0.00	0.00	0.00	0.00	0.00	0.00	
1,716.67	22.00	89.00	1,680.89	4.85	278.09	1.50	1.50	0.00	89.00	
4,541.67	22.00	89.00	4,300.19	23.32	1,336.20	0.00	0.00	0.00	0.00	
5,641.67	0.00	0.00	5,373.36	26.96	1,544.77	2.00	-2.00	-8.09	-180.00	
6,673.70	0.00	0.00	6,405.39	26.96	1,544.77	0.00	0.00	0.00	0.00	
7,675.24	90.14	186.21	7,042.00	-607.46	1,475.73	9.00	9.00	-17.35	186.21	
8,017.95	90.14	186.21	7,041.17	-948.15	1,438.66	0.00	0.00	0.00	0.00	ZELDA 25-10HZ_tgt
8,345.43	90.13	179.66	7,040.40	-1,275.02	1,421.90	2.00	0.00	-2.00	-90.06	
17,691.50	90.13	179.66	7,019.00	-10,620.91	1,477.24	0.00	0.00	0.00	0.00	ZELDA 25-10HZ_BHL

# Corporate Planning Report

<b>Database:</b>	PLANNING	<b>Local Co-ordinate Reference:</b>	Well ZELDA 25-10HZ
<b>Company:</b>	US ROCKIES WATTENBERG PLANNING	<b>TVD Reference:</b>	RKB = 17' @ 4920.00usft (Drilling Rig)
<b>Project:</b>	WELD-NAD83-UTMFT13N	<b>MD Reference:</b>	RKB = 17' @ 4920.00usft (Drilling Rig)
<b>Site:</b>	2N-65W-25 Zelda 29-25HZ Pad	<b>North Reference:</b>	True
<b>Well:</b>	ZELDA 25-10HZ	<b>Survey Calculation Method:</b>	Minimum Curvature
<b>Wellbore:</b>	Plan A		
<b>Design:</b>	Permit Rev-1		

Planned Survey									
Measured Depth (usft)	Inclination (°)	Azimuth (°)	Vertical Depth (usft)	+N/-S (usft)	+E/-W (usft)	Vertical Section (usft)	Dogleg Rate (°/100usft)	Build Rate (°/100usft)	Turn Rate (°/100usft)
0.00	0.00	0.00	0.00	0.00	0.00	0.00	0.00	0.00	0.00
100.00	0.00	0.00	100.00	0.00	0.00	0.00	0.00	0.00	0.00
200.00	0.00	0.00	200.00	0.00	0.00	0.00	0.00	0.00	0.00
250.00	0.00	0.00	250.00	0.00	0.00	0.00	0.00	0.00	0.00
<b>Start Build 1.50</b>									
300.00	0.75	89.00	300.00	0.01	0.33	-0.01	1.50	1.50	0.00
400.00	2.25	89.00	399.96	0.05	2.94	-0.07	1.50	1.50	0.00
500.00	3.75	89.00	499.82	0.14	8.18	-0.19	1.50	1.50	0.00
600.00	5.25	89.00	599.51	0.28	16.02	-0.38	1.50	1.50	0.00
700.00	6.75	89.00	698.96	0.46	26.47	-0.63	1.50	1.50	0.00
800.00	8.25	89.00	798.10	0.69	39.52	-0.94	1.50	1.50	0.00
900.00	9.75	89.00	896.87	0.96	55.16	-1.31	1.50	1.50	0.00
1,000.00	11.25	89.00	995.19	1.28	73.38	-1.74	1.50	1.50	0.00
1,100.00	12.75	89.00	1,093.00	1.64	94.17	-2.24	1.50	1.50	0.00
1,200.00	14.25	89.00	1,190.24	2.05	117.51	-2.79	1.50	1.50	0.00
1,300.00	15.75	89.00	1,286.83	2.50	143.39	-3.40	1.50	1.50	0.00
1,388.80	17.08	89.00	1,372.00	2.94	168.48	-4.00	1.50	1.50	0.00
<b>Fox Hills</b>									
1,400.00	17.25	89.00	1,382.71	3.00	171.78	-4.08	1.50	1.50	0.00
1,500.00	18.75	89.00	1,477.81	3.54	202.68	-4.81	1.50	1.50	0.00
1,523.46	19.10	89.00	1,500.00	3.67	210.29	-4.99	1.50	1.50	0.00
<b>9 5/8" Csg</b>									
1,600.00	20.25	89.00	1,572.07	4.12	236.06	-5.60	1.50	1.50	0.00
1,700.00	21.75	89.00	1,665.43	4.75	271.89	-6.45	1.50	1.50	0.00
1,716.67	22.00	89.00	1,680.89	4.85	278.09	-6.60	1.50	1.50	0.00
<b>Start 2825.00 hold at 1716.67 MD</b>									
1,800.00	22.00	89.00	1,758.16	5.40	309.31	-7.34	0.00	0.00	0.00
1,900.00	22.00	89.00	1,850.88	6.05	346.76	-8.23	0.00	0.00	0.00
2,000.00	22.00	89.00	1,943.59	6.71	384.22	-9.12	0.00	0.00	0.00
2,100.00	22.00	89.00	2,036.31	7.36	421.67	-10.01	0.00	0.00	0.00
2,200.00	22.00	89.00	2,129.03	8.01	459.13	-10.90	0.00	0.00	0.00
2,300.00	22.00	89.00	2,221.75	8.67	496.58	-11.79	0.00	0.00	0.00
2,400.00	22.00	89.00	2,314.47	9.32	534.04	-12.68	0.00	0.00	0.00
2,500.00	22.00	89.00	2,407.19	9.98	571.49	-13.57	0.00	0.00	0.00
2,600.00	22.00	89.00	2,499.90	10.63	608.95	-14.46	0.00	0.00	0.00
2,700.00	22.00	89.00	2,592.62	11.28	646.40	-15.34	0.00	0.00	0.00
2,800.00	22.00	89.00	2,685.34	11.94	683.86	-16.23	0.00	0.00	0.00
2,900.00	22.00	89.00	2,778.06	12.59	721.31	-17.12	0.00	0.00	0.00
3,000.00	22.00	89.00	2,870.78	13.24	758.77	-18.01	0.00	0.00	0.00
3,100.00	22.00	89.00	2,963.50	13.90	796.22	-18.90	0.00	0.00	0.00
3,200.00	22.00	89.00	3,056.21	14.55	833.68	-19.79	0.00	0.00	0.00
3,300.00	22.00	89.00	3,148.93	15.21	871.13	-20.68	0.00	0.00	0.00
3,400.00	22.00	89.00	3,241.65	15.86	908.59	-21.57	0.00	0.00	0.00
3,500.00	22.00	89.00	3,334.37	16.51	946.04	-22.46	0.00	0.00	0.00
3,600.00	22.00	89.00	3,427.09	17.17	983.50	-23.35	0.00	0.00	0.00
3,700.00	22.00	89.00	3,519.81	17.82	1,020.95	-24.24	0.00	0.00	0.00
3,800.00	22.00	89.00	3,612.52	18.47	1,058.41	-25.12	0.00	0.00	0.00
3,900.00	22.00	89.00	3,705.24	19.13	1,095.86	-26.01	0.00	0.00	0.00
4,000.00	22.00	89.00	3,797.96	19.78	1,133.32	-26.90	0.00	0.00	0.00
4,100.00	22.00	89.00	3,890.68	20.44	1,170.77	-27.79	0.00	0.00	0.00
4,182.31	22.00	89.00	3,967.00	20.97	1,201.60	-28.52	0.00	0.00	0.00
<b>Parkman</b>									
4,200.00	22.00	89.00	3,983.40	21.09	1,208.23	-28.68	0.00	0.00	0.00
4,300.00	22.00	89.00	4,076.12	21.74	1,245.68	-29.57	0.00	0.00	0.00

# Corporate Planning Report

<b>Database:</b>	PLANNING	<b>Local Co-ordinate Reference:</b>	Well ZELDA 25-10HZ
<b>Company:</b>	US ROCKIES WATTENBERG PLANNING	<b>TVD Reference:</b>	RKB = 17' @ 4920.00usft (Drilling Rig)
<b>Project:</b>	WELD-NAD83-UTMFT13N	<b>MD Reference:</b>	RKB = 17' @ 4920.00usft (Drilling Rig)
<b>Site:</b>	2N-65W-25 Zelda 29-25HZ Pad	<b>North Reference:</b>	True
<b>Well:</b>	ZELDA 25-10HZ	<b>Survey Calculation Method:</b>	Minimum Curvature
<b>Wellbore:</b>	Plan A		
<b>Design:</b>	Permit Rev-1		

Planned Survey									
Measured Depth (usft)	Inclination (°)	Azimuth (°)	Vertical Depth (usft)	+N/-S (usft)	+E/-W (usft)	Vertical Section (usft)	Dogleg Rate (°/100usft)	Build Rate (°/100usft)	Turn Rate (°/100usft)
4,400.00	22.00	89.00	4,168.84	22.40	1,283.14	-30.46	0.00	0.00	0.00
4,500.00	22.00	89.00	4,261.55	23.05	1,320.59	-31.35	0.00	0.00	0.00
4,541.67	22.00	89.00	4,300.19	23.32	1,336.20	-31.72	0.00	0.00	0.00
<b>Start DLS 2.00 TFO -180.00</b>									
4,600.00	20.83	89.00	4,354.49	23.70	1,357.49	-32.22	2.00	-2.00	0.00
4,669.78	19.44	89.00	4,420.00	24.11	1,381.51	-32.79	2.00	-2.00	0.00
<b>Sussex</b>									
4,700.00	18.83	89.00	4,448.55	24.29	1,391.42	-33.03	2.00	-2.00	0.00
4,800.00	16.83	89.00	4,543.74	24.82	1,422.03	-33.76	2.00	-2.00	0.00
4,900.00	14.83	89.00	4,639.95	25.30	1,449.31	-34.40	2.00	-2.00	0.00
5,000.00	12.83	89.00	4,737.04	25.72	1,473.22	-34.97	2.00	-2.00	0.00
5,100.00	10.83	89.00	4,834.91	26.07	1,493.72	-35.46	2.00	-2.00	0.00
5,200.00	8.83	89.00	4,933.44	26.37	1,510.79	-35.86	2.00	-2.00	0.00
5,300.00	6.83	89.00	5,032.50	26.61	1,524.42	-36.19	2.00	-2.00	0.00
5,400.00	4.83	89.00	5,131.97	26.79	1,534.58	-36.43	2.00	-2.00	0.00
5,500.00	2.83	89.00	5,231.75	26.90	1,541.27	-36.59	2.00	-2.00	0.00
5,600.00	0.83	89.00	5,331.69	26.96	1,544.47	-36.66	2.00	-2.00	0.00
5,641.67	0.00	0.00	5,373.36	26.96	1,544.77	-36.67	2.00	-2.00	-213.60
<b>Start 1032.03 hold at 5641.67 MD</b>									
5,700.00	0.00	0.00	5,431.69	26.96	1,544.77	-36.67	0.00	0.00	0.00
5,800.00	0.00	0.00	5,531.69	26.96	1,544.77	-36.67	0.00	0.00	0.00
5,900.00	0.00	0.00	5,631.69	26.96	1,544.77	-36.67	0.00	0.00	0.00
6,000.00	0.00	0.00	5,731.69	26.96	1,544.77	-36.67	0.00	0.00	0.00
6,100.00	0.00	0.00	5,831.69	26.96	1,544.77	-36.67	0.00	0.00	0.00
6,200.00	0.00	0.00	5,931.69	26.96	1,544.77	-36.67	0.00	0.00	0.00
6,300.00	0.00	0.00	6,031.69	26.96	1,544.77	-36.67	0.00	0.00	0.00
6,400.00	0.00	0.00	6,131.69	26.96	1,544.77	-36.67	0.00	0.00	0.00
6,500.00	0.00	0.00	6,231.69	26.96	1,544.77	-36.67	0.00	0.00	0.00
6,600.00	0.00	0.00	6,331.69	26.96	1,544.77	-36.67	0.00	0.00	0.00
6,673.70	0.00	0.00	6,405.39	26.96	1,544.77	-36.67	0.00	0.00	0.00
<b>KOP @ 6673.70ft</b>									
6,700.00	2.37	186.21	6,431.68	26.42	1,544.71	-36.13	9.00	9.00	-660.71
6,800.00	11.37	186.21	6,530.86	14.55	1,543.42	-24.25	9.00	9.00	0.00
6,900.00	20.37	186.21	6,626.95	-12.60	1,540.46	2.92	9.00	9.00	0.00
7,000.00	29.37	186.21	6,717.59	-54.37	1,535.92	44.71	9.00	9.00	0.00
7,100.00	38.37	186.21	6,800.54	-109.71	1,529.90	100.09	9.00	9.00	0.00
7,200.00	47.37	186.21	6,873.75	-177.27	1,522.54	167.70	9.00	9.00	0.00
<b>DLS = 9°/100'</b>									
7,249.77	51.85	186.21	6,906.00	-214.95	1,518.44	205.40	9.00	9.00	0.00
<b>Sharon Springs</b>									
7,300.00	56.37	186.21	6,935.44	-255.39	1,514.04	245.87	9.00	9.00	0.00
7,319.52	58.12	186.21	6,946.00	-271.71	1,512.27	262.20	9.00	9.00	0.00
<b>Niobrara</b>									
7,400.00	65.37	186.21	6,984.07	-342.13	1,504.60	332.67	9.00	9.00	0.00
7,498.32	74.22	186.21	7,018.00	-433.77	1,494.63	424.37	9.00	9.00	0.00
<b>Nio B</b>									
7,500.00	74.37	186.21	7,018.46	-435.38	1,494.46	425.98	9.00	9.00	0.00
7,600.00	83.37	186.21	7,037.74	-532.82	1,483.85	523.49	9.00	9.00	0.00
7,675.24	90.14	186.21	7,042.00	-607.45	1,475.73	598.17	9.00	9.00	0.00
<b>End Build @ 7675.24ft - Top of Production</b>									
7,700.00	90.14	186.21	7,041.94	-632.07	1,473.05	622.80	0.00	0.00	0.00
7,800.00	90.14	186.21	7,041.70	-731.48	1,462.24	722.28	0.00	0.00	0.00
7,900.00	90.14	186.21	7,041.46	-830.89	1,451.42	821.76	0.00	0.00	0.00

# Corporate Planning Report

<b>Database:</b>	PLANNING	<b>Local Co-ordinate Reference:</b>	Well ZELDA 25-10HZ
<b>Company:</b>	US ROCKIES WATTENBERG PLANNING	<b>TVD Reference:</b>	RKB = 17' @ 4920.00usft (Drilling Rig)
<b>Project:</b>	WELD-NAD83-UTMFT13N	<b>MD Reference:</b>	RKB = 17' @ 4920.00usft (Drilling Rig)
<b>Site:</b>	2N-65W-25 Zelda 29-25HZ Pad	<b>North Reference:</b>	True
<b>Well:</b>	ZELDA 25-10HZ	<b>Survey Calculation Method:</b>	Minimum Curvature
<b>Wellbore:</b>	Plan A		
<b>Design:</b>	Permit Rev-1		

Planned Survey									
Measured Depth (usft)	Inclination (°)	Azimuth (°)	Vertical Depth (usft)	+N/-S (usft)	+E/-W (usft)	Vertical Section (usft)	Dogleg Rate (°/100usft)	Build Rate (°/100usft)	Turn Rate (°/100usft)
8,000.00	90.14	186.21	7,041.21	-930.31	1,440.60	921.24	0.00	0.00	0.00
8,017.95	90.14	186.21	7,041.17	-948.15	1,438.66	939.09	0.00	0.00	0.00
Begin Turn to BHL @ 8017.95ft									
8,100.00	90.14	184.57	7,040.97	-1,029.84	1,430.95	1,020.82	2.00	0.00	-2.00
8,200.00	90.13	182.57	7,040.73	-1,129.64	1,424.73	1,120.66	2.00	0.00	-2.00
8,300.00	90.13	180.57	7,040.50	-1,229.59	1,421.99	1,220.64	2.00	0.00	-2.00
8,345.43	90.13	179.66	7,040.40	-1,275.02	1,421.90	1,266.06	2.00	0.00	-2.00
End Turn @ 8345.43ft									
8,400.00	90.13	179.66	7,040.27	-1,329.59	1,422.22	1,320.63	0.00	0.00	0.00
8,500.00	90.13	179.66	7,040.04	-1,429.59	1,422.81	1,420.62	0.00	0.00	0.00
8,600.00	90.13	179.66	7,039.81	-1,529.59	1,423.41	1,520.61	0.00	0.00	0.00
8,700.00	90.13	179.66	7,039.58	-1,629.59	1,424.00	1,620.61	0.00	0.00	0.00
8,800.00	90.13	179.66	7,039.36	-1,729.58	1,424.59	1,720.60	0.00	0.00	0.00
8,900.00	90.13	179.66	7,039.13	-1,829.58	1,425.18	1,820.59	0.00	0.00	0.00
9,000.00	90.13	179.66	7,038.90	-1,929.58	1,425.77	1,920.58	0.00	0.00	0.00
9,100.00	90.13	179.66	7,038.67	-2,029.58	1,426.37	2,020.58	0.00	0.00	0.00
9,200.00	90.13	179.66	7,038.44	-2,129.58	1,426.96	2,120.57	0.00	0.00	0.00
9,300.00	90.13	179.66	7,038.21	-2,229.57	1,427.55	2,220.56	0.00	0.00	0.00
9,400.00	90.13	179.66	7,037.98	-2,329.57	1,428.14	2,320.55	0.00	0.00	0.00
9,500.00	90.13	179.66	7,037.75	-2,429.57	1,428.74	2,420.55	0.00	0.00	0.00
9,600.00	90.13	179.66	7,037.52	-2,529.57	1,429.33	2,520.54	0.00	0.00	0.00
9,700.00	90.13	179.66	7,037.30	-2,629.57	1,429.92	2,620.53	0.00	0.00	0.00
9,800.00	90.13	179.66	7,037.07	-2,729.56	1,430.51	2,720.52	0.00	0.00	0.00
9,900.00	90.13	179.66	7,036.84	-2,829.56	1,431.10	2,820.51	0.00	0.00	0.00
10,000.00	90.13	179.66	7,036.61	-2,929.56	1,431.70	2,920.51	0.00	0.00	0.00
10,100.00	90.13	179.66	7,036.38	-3,029.56	1,432.29	3,020.50	0.00	0.00	0.00
10,200.00	90.13	179.66	7,036.15	-3,129.56	1,432.88	3,120.49	0.00	0.00	0.00
10,300.00	90.13	179.66	7,035.92	-3,229.55	1,433.47	3,220.48	0.00	0.00	0.00
10,400.00	90.13	179.66	7,035.69	-3,329.55	1,434.06	3,320.48	0.00	0.00	0.00
10,500.00	90.13	179.66	7,035.46	-3,429.55	1,434.66	3,420.47	0.00	0.00	0.00
10,600.00	90.13	179.66	7,035.24	-3,529.55	1,435.25	3,520.46	0.00	0.00	0.00
10,700.00	90.13	179.66	7,035.01	-3,629.55	1,435.84	3,620.45	0.00	0.00	0.00
10,800.00	90.13	179.66	7,034.78	-3,729.54	1,436.43	3,720.44	0.00	0.00	0.00
10,900.00	90.13	179.66	7,034.55	-3,829.54	1,437.03	3,820.44	0.00	0.00	0.00
11,000.00	90.13	179.66	7,034.32	-3,929.54	1,437.62	3,920.43	0.00	0.00	0.00
11,100.00	90.13	179.66	7,034.09	-4,029.54	1,438.21	4,020.42	0.00	0.00	0.00
11,200.00	90.13	179.66	7,033.86	-4,129.54	1,438.80	4,120.41	0.00	0.00	0.00
11,300.00	90.13	179.66	7,033.63	-4,229.53	1,439.39	4,220.41	0.00	0.00	0.00
11,400.00	90.13	179.66	7,033.40	-4,329.53	1,439.99	4,320.40	0.00	0.00	0.00
11,500.00	90.13	179.66	7,033.17	-4,429.53	1,440.58	4,420.39	0.00	0.00	0.00
11,600.00	90.13	179.66	7,032.95	-4,529.53	1,441.17	4,520.38	0.00	0.00	0.00
11,700.00	90.13	179.66	7,032.72	-4,629.53	1,441.76	4,620.38	0.00	0.00	0.00
11,800.00	90.13	179.66	7,032.49	-4,729.52	1,442.35	4,720.37	0.00	0.00	0.00
11,900.00	90.13	179.66	7,032.26	-4,829.52	1,442.95	4,820.36	0.00	0.00	0.00
12,000.00	90.13	179.66	7,032.03	-4,929.52	1,443.54	4,920.35	0.00	0.00	0.00
12,100.00	90.13	179.66	7,031.80	-5,029.52	1,444.13	5,020.34	0.00	0.00	0.00
12,200.00	90.13	179.66	7,031.57	-5,129.52	1,444.72	5,120.34	0.00	0.00	0.00
12,300.00	90.13	179.66	7,031.34	-5,229.51	1,445.31	5,220.33	0.00	0.00	0.00
12,400.00	90.13	179.66	7,031.11	-5,329.51	1,445.91	5,320.32	0.00	0.00	0.00
12,500.00	90.13	179.66	7,030.89	-5,429.51	1,446.50	5,420.31	0.00	0.00	0.00
12,600.00	90.13	179.66	7,030.66	-5,529.51	1,447.09	5,520.31	0.00	0.00	0.00
12,700.00	90.13	179.66	7,030.43	-5,629.51	1,447.68	5,620.30	0.00	0.00	0.00
12,800.00	90.13	179.66	7,030.20	-5,729.50	1,448.28	5,720.29	0.00	0.00	0.00
12,900.00	90.13	179.66	7,029.97	-5,829.50	1,448.87	5,820.28	0.00	0.00	0.00

# Corporate Planning Report

<b>Database:</b>	PLANNING	<b>Local Co-ordinate Reference:</b>	Well ZELDA 25-10HZ
<b>Company:</b>	US ROCKIES WATTENBERG PLANNING	<b>TVD Reference:</b>	RKB = 17' @ 4920.00usft (Drilling Rig)
<b>Project:</b>	WELD-NAD83-UTMFT13N	<b>MD Reference:</b>	RKB = 17' @ 4920.00usft (Drilling Rig)
<b>Site:</b>	2N-65W-25 Zelda 29-25HZ Pad	<b>North Reference:</b>	True
<b>Well:</b>	ZELDA 25-10HZ	<b>Survey Calculation Method:</b>	Minimum Curvature
<b>Wellbore:</b>	Plan A		
<b>Design:</b>	Permit Rev-1		

Planned Survey									
Measured Depth (usft)	Inclination (°)	Azimuth (°)	Vertical Depth (usft)	+N/-S (usft)	+E/-W (usft)	Vertical Section (usft)	Dogleg Rate (°/100usft)	Build Rate (°/100usft)	Turn Rate (°/100usft)
13,000.00	90.13	179.66	7,029.74	-5,929.50	1,449.46	5,920.28	0.00	0.00	0.00
13,100.00	90.13	179.66	7,029.51	-6,029.50	1,450.05	6,020.27	0.00	0.00	0.00
13,200.00	90.13	179.66	7,029.28	-6,129.50	1,450.64	6,120.26	0.00	0.00	0.00
13,300.00	90.13	179.66	7,029.05	-6,229.49	1,451.24	6,220.25	0.00	0.00	0.00
13,400.00	90.13	179.66	7,028.82	-6,329.49	1,451.83	6,320.24	0.00	0.00	0.00
13,500.00	90.13	179.66	7,028.60	-6,429.49	1,452.42	6,420.24	0.00	0.00	0.00
13,600.00	90.13	179.66	7,028.37	-6,529.49	1,453.01	6,520.23	0.00	0.00	0.00
13,700.00	90.13	179.66	7,028.14	-6,629.49	1,453.60	6,620.22	0.00	0.00	0.00
13,800.00	90.13	179.66	7,027.91	-6,729.48	1,454.20	6,720.21	0.00	0.00	0.00
13,900.00	90.13	179.66	7,027.68	-6,829.48	1,454.79	6,820.21	0.00	0.00	0.00
14,000.00	90.13	179.66	7,027.45	-6,929.48	1,455.38	6,920.20	0.00	0.00	0.00
14,100.00	90.13	179.66	7,027.22	-7,029.48	1,455.97	7,020.19	0.00	0.00	0.00
14,200.00	90.13	179.66	7,026.99	-7,129.48	1,456.57	7,120.18	0.00	0.00	0.00
14,300.00	90.13	179.66	7,026.76	-7,229.47	1,457.16	7,220.18	0.00	0.00	0.00
14,400.00	90.13	179.66	7,026.54	-7,329.47	1,457.75	7,320.17	0.00	0.00	0.00
14,500.00	90.13	179.66	7,026.31	-7,429.47	1,458.34	7,420.16	0.00	0.00	0.00
14,600.00	90.13	179.66	7,026.08	-7,529.47	1,458.93	7,520.15	0.00	0.00	0.00
14,700.00	90.13	179.66	7,025.85	-7,629.47	1,459.53	7,620.14	0.00	0.00	0.00
14,800.00	90.13	179.66	7,025.62	-7,729.46	1,460.12	7,720.14	0.00	0.00	0.00
14,900.00	90.13	179.66	7,025.39	-7,829.46	1,460.71	7,820.13	0.00	0.00	0.00
15,000.00	90.13	179.66	7,025.16	-7,929.46	1,461.30	7,920.12	0.00	0.00	0.00
15,100.00	90.13	179.66	7,024.93	-8,029.46	1,461.89	8,020.11	0.00	0.00	0.00
15,200.00	90.13	179.66	7,024.70	-8,129.46	1,462.49	8,120.11	0.00	0.00	0.00
15,300.00	90.13	179.66	7,024.48	-8,229.45	1,463.08	8,220.10	0.00	0.00	0.00
15,400.00	90.13	179.66	7,024.25	-8,329.45	1,463.67	8,320.09	0.00	0.00	0.00
15,500.00	90.13	179.66	7,024.02	-8,429.45	1,464.26	8,420.08	0.00	0.00	0.00
15,600.00	90.13	179.66	7,023.79	-8,529.45	1,464.86	8,520.07	0.00	0.00	0.00
15,700.00	90.13	179.66	7,023.56	-8,629.45	1,465.45	8,620.07	0.00	0.00	0.00
15,800.00	90.13	179.66	7,023.33	-8,729.44	1,466.04	8,720.06	0.00	0.00	0.00
15,900.00	90.13	179.66	7,023.10	-8,829.44	1,466.63	8,820.05	0.00	0.00	0.00
16,000.00	90.13	179.66	7,022.87	-8,929.44	1,467.22	8,920.04	0.00	0.00	0.00
16,100.00	90.13	179.66	7,022.64	-9,029.44	1,467.82	9,020.04	0.00	0.00	0.00
16,200.00	90.13	179.66	7,022.41	-9,129.44	1,468.41	9,120.03	0.00	0.00	0.00
16,300.00	90.13	179.66	7,022.19	-9,229.43	1,469.00	9,220.02	0.00	0.00	0.00
16,400.00	90.13	179.66	7,021.96	-9,329.43	1,469.59	9,320.01	0.00	0.00	0.00
16,500.00	90.13	179.66	7,021.73	-9,429.43	1,470.18	9,420.01	0.00	0.00	0.00
16,600.00	90.13	179.66	7,021.50	-9,529.43	1,470.78	9,520.00	0.00	0.00	0.00
16,700.00	90.13	179.66	7,021.27	-9,629.43	1,471.37	9,619.99	0.00	0.00	0.00
16,800.00	90.13	179.66	7,021.04	-9,729.42	1,471.96	9,719.98	0.00	0.00	0.00
16,900.00	90.13	179.66	7,020.81	-9,829.42	1,472.55	9,819.97	0.00	0.00	0.00
17,000.00	90.13	179.66	7,020.58	-9,929.42	1,473.15	9,919.97	0.00	0.00	0.00
17,100.00	90.13	179.66	7,020.35	-10,029.42	1,473.74	10,019.96	0.00	0.00	0.00
17,200.00	90.13	179.66	7,020.13	-10,129.41	1,474.33	10,119.95	0.00	0.00	0.00
17,300.00	90.13	179.66	7,019.90	-10,229.41	1,474.92	10,219.94	0.00	0.00	0.00
17,400.00	90.13	179.66	7,019.67	-10,329.41	1,475.51	10,319.94	0.00	0.00	0.00
17,500.00	90.13	179.66	7,019.44	-10,429.41	1,476.11	10,419.93	0.00	0.00	0.00
17,600.00	90.13	179.66	7,019.21	-10,529.41	1,476.70	10,519.92	0.00	0.00	0.00
17,691.50	90.13	179.66	7,019.00	-10,620.91	1,477.24	10,611.41	0.00	0.00	0.00
TD Well @ 17691.50ft									



## Corporate Planning Report

<b>Database:</b>	PLANNING	<b>Local Co-ordinate Reference:</b>	Well ZELDA 25-10HZ
<b>Company:</b>	US ROCKIES WATTENBERG PLANNING	<b>TVD Reference:</b>	RKB = 17' @ 4920.00usft (Drilling Rig)
<b>Project:</b>	WELD-NAD83-UTMFT13N	<b>MD Reference:</b>	RKB = 17' @ 4920.00usft (Drilling Rig)
<b>Site:</b>	2N-65W-25 Zelda 29-25HZ Pad	<b>North Reference:</b>	True
<b>Well:</b>	ZELDA 25-10HZ	<b>Survey Calculation Method:</b>	Minimum Curvature
<b>Wellbore:</b>	Plan A		
<b>Design:</b>	Permit Rev-1		

Casing Points					
Measured Depth (usft)	Vertical Depth (usft)	Name	Casing Diameter (")	Hole Diameter (")	
1,523.46	1,500.00	9 5/8" Csg	9-5/8	13-1/2	
7,675.24	7,042.00	Top of Production	5-1/2	7-7/8	

Formations						
Measured Depth (usft)	Vertical Depth (usft)	Name	Lithology	Dip (°)	Dip Direction (°)	
1,388.80	1,372.00	Fox Hills				
4,182.31	3,967.00	Parkman				
4,669.78	4,420.00	Sussex				
7,249.77	6,906.00	Sharon Springs				
7,319.52	6,946.00	Niobrara				
7,498.32	7,018.00	Nio B				

Plan Annotations					
Measured Depth (usft)	Vertical Depth (usft)	Local Coordinates		Comment	
		+N/-S (usft)	+E/-W (usft)		
250.00	250.00	0.00	0.00	Start Build 1.50	
1,716.67	1,680.89	4.85	278.09	Start 2825.00 hold at 1716.67 MD	
4,541.67	4,300.19	23.32	1,336.20	Start DLS 2.00 TFO -180.00	
5,641.67	5,373.36	26.96	1,544.77	Start 1032.03 hold at 5641.67 MD	
6,673.70	6,405.39	26.96	1,544.77	KOP @ 6673.70ft	
7,200.00	6,873.75	-177.27	1,522.54	DLS = 9°/100'	
7,675.24	7,042.00	-607.45	1,475.73	End Build @ 7675.24ft	
8,017.95	7,041.17	-948.15	1,438.66	Begin Turn to BHL @ 8017.95ft	
8,345.43	7,040.40	-1,275.02	1,421.90	End Turn @ 8345.43ft	
17,691.50	7,019.00	-10,620.91	1,477.24	TD Well @ 17691.50ft	