



Project: Weld County, CO NAD 83
Site: Anschutz Equus Farms 4-62-28_27 SWSW Pad [GOOD]
Well: Anschutz Equus Farms 4-62-29-5764C
Wellbore: OH
Design: OH

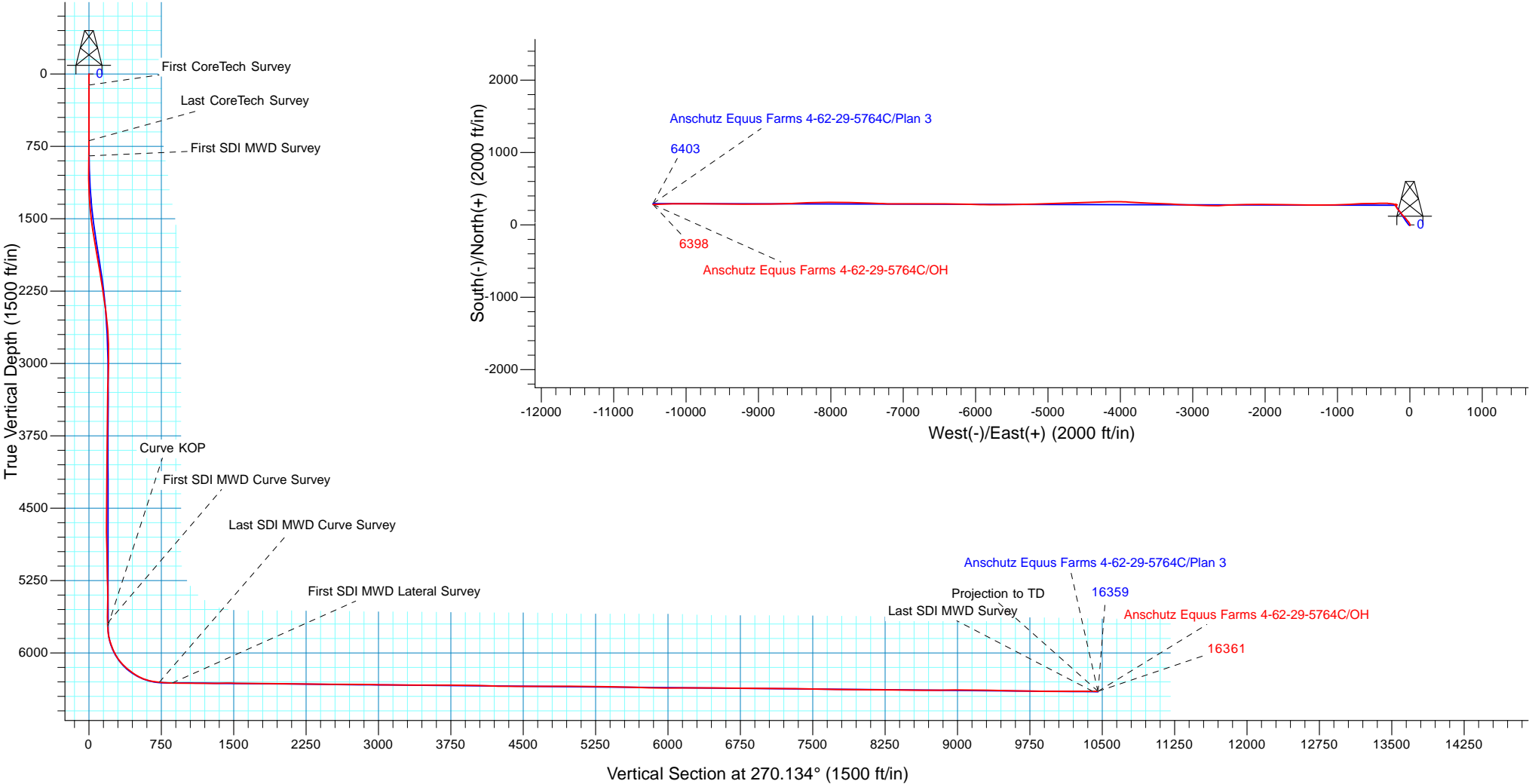


WELL DETAILS: Anschutz Equus Farms 4-62-29-5764C			
GL 4634.9' & KB 16.5' @ 4651.40ft (Cade 24)	4634.90		
Northing	Easting	Latitude	Longitude
1345632.86	3324371.40	40° 16' 34.769 N	104° 20' 14.719 W

Design: OH (Anschutz Equus Farms 4-62-29-5764C/OH)	
Created By: Seth Burstad	Date: 9-27-2017

PROJECT DETAILS: Weld County, CO NAD 83	
Geodetic System:	US State Plane 1983
Datum:	North American Datum 1983
Ellipsoid:	GRS 1980
Zone:	Colorado Northern Zone
System Datum:	Mean Sea Level
Local North:	True

ANNOTATIONS								
TVD	MD	Inc	Azi	+N/-S	+E/-W	Vsect	Departure	Annotation
116.50	116.50	0.23	139.050	-0.18	0.15	-0.15	0.23	First CoreTech Survey
691.46	691.50	0.68	176.800	-6.02	-0.28	0.26	6.22	Last CoreTech Survey
849.92	850.00	2.46	49.820	-4.76	2.37	-2.38	10.56	First SDI MWD Survey
5689.75	5727.00	0.26	264.980	280.87	-192.19	192.85	423.10	First SDI MWD Curve Survey
5727.73	5765.00	2.67	285.457	281.10	-193.13	193.79	425.26	Curve KOP
6304.71	6628.00	85.74	266.120	290.74	-727.56	728.24	960.22	Last SDI MWD Curve Survey
6312.12	6762.00	87.92	267.830	283.68	-861.15	861.81	1094.00	First SDI MWD Lateral Survey
6397.94	16305.00	90.07	267.240	285.01	-10399.43	10400.07	10636.10	Last SDI MWD Survey
6397.87	16361.00	90.07	267.240	282.31	-10455.37	10456.00	10692.10	Projection to TD





Bill Barrett Corporation

Bill Barrett Corp.

Weld County, CO NAD 83

Anschutz Equus Farms 4-62-28_27 SWSW Pad [GOOD]

Anschutz Equus Farms 4-62-29-5764C

OH

Design: OH

Standard Survey Report

27 September, 2017



Scientific Drilling

www.scientificdrilling.com



Company:	Bill Barrett Corp.	Local Co-ordinate Reference:	Well Anschutz Equus Farms 4-62-29-5764C
Project:	Weld County, CO NAD 83	TVD Reference:	GL 4634.9' & KB 16.5' @ 4651.40ft (Cade 24)
Site:	Anschutz Equus Farms 4-62-28_27 SWSW Pad [GOOD]	MD Reference:	GL 4634.9' & KB 16.5' @ 4651.40ft (Cade 24)
Well:	Anschutz Equus Farms 4-62-29-5764C	North Reference:	True
Wellbore:	OH	Survey Calculation Method:	Minimum Curvature
Design:	OH	Database:	Casper District

Project	Weld County, CO NAD 83		
Map System:	US State Plane 1983	System Datum:	Mean Sea Level
Geo Datum:	North American Datum 1983		
Map Zone:	Colorado Northern Zone		

Site	Anschutz Equus Farms 4-62-28_27 SWSW Pad [GOOD]				
Site Position:		Northing:	1,345,937.77 usft	Latitude:	40° 16' 37.790 N
From:	Lat/Long	Easting:	3,324,312.31 usft	Longitude:	104° 20' 15.430 W
Position Uncertainty:	0.00 ft	Slot Radius:	13.200 in	Grid Convergence:	0.75 °

Well	Anschutz Equus Farms 4-62-29-5764C, 245' FSL 306' FWL Sec 28 T4N R62W					
Well Position	+N/-S	0.00 ft	Northing:	1,345,632.87 usft	Latitude:	40° 16' 34.769 N
	+E/-W	0.00 ft	Easting:	3,324,371.41 usft	Longitude:	104° 20' 14.719 W
Position Uncertainty		0.00 ft	Wellhead Elevation:	0.00 ft	Ground Level:	4,634.90 ft

Wellbore	OH					
Magnetics	Model Name	Sample Date	Declination (°)	Dip Angle (°)	Field Strength (nT)	
	HDGM	5/3/2017	8.28	66.95	52,386	
	HDGM	7/18/2017	8.27	66.93	52,361	

Design	OH				
Audit Notes:					
Version:	1.0	Phase:	ACTUAL	Tie On Depth:	0.00
Vertical Section:	Depth From (TVD) (ft)	+N/-S (ft)	+E/-W (ft)	Direction (°)	
	0.00	0.00	0.00	270.134	

Survey Program	Date	9/27/2017			
From (ft)	To (ft)	Survey (Wellbore)	Tool Name	Description	
116.50	691.50	Survey #1 - Surface Gyro (OH)	Standard Keeper	Standard Wireline Keeper ver 1.0.2	
850.00	6,628.00	Survey #2 - Intermediate (OH)	OWSG MWD	OWSG MWD - Standard	
6,762.00	16,361.00	Survey #3 - Lateral (OH)	OWSG MWD	OWSG MWD - Standard	

Survey									
Measured Depth (ft)	Inclination (°)	Azimuth (°)	Vertical Depth (ft)	+N/-S (ft)	+E/-W (ft)	Vertical Section (ft)	Dogleg Rate (°/100ft)	Build Rate (°/100ft)	Turn Rate (°/100ft)
0.00	0.00	0.000	0.00	0.00	0.00	0.00	0.00	0.00	0.00
116.50	0.23	139.050	116.50	-0.18	0.15	-0.15	0.20	0.20	0.00
First CoreTech Survey									
216.50	0.12	191.630	216.50	-0.43	0.26	-0.26	0.18	-0.11	52.58
316.50	0.83	195.720	316.50	-1.23	0.05	-0.05	0.71	0.71	4.09
416.50	0.97	188.940	416.48	-2.76	-0.28	0.27	0.18	0.14	-6.78
516.50	0.65	171.720	516.47	-4.16	-0.33	0.32	0.40	-0.32	-17.22

Company:	Bill Barrett Corp.	Local Co-ordinate Reference:	Well Anschutz Equus Farms 4-62-29-5764C
Project:	Weld County, CO NAD 83	TVD Reference:	GL 4634.9' & KB 16.5' @ 4651.40ft (Cade 24)
Site:	Anschutz Equus Farms 4-62-28_27 SWSW Pad [GOOD]	MD Reference:	GL 4634.9' & KB 16.5' @ 4651.40ft (Cade 24)
Well:	Anschutz Equus Farms 4-62-29-5764C	North Reference:	True
Wellbore:	OH	Survey Calculation Method:	Minimum Curvature
Design:	OH	Database:	Casper District

Survey									
Measured Depth (ft)	Inclination (°)	Azimuth (°)	Vertical Depth (ft)	+N/-S (ft)	+E/-W (ft)	Vertical Section (ft)	Dogleg Rate (°/100ft)	Build Rate (°/100ft)	Turn Rate (°/100ft)
616.50	0.56	183.620	616.47	-5.21	-0.28	0.27	0.15	-0.09	11.90
691.50	0.68	176.800	691.46	-6.02	-0.28	0.26	0.19	0.16	-9.09
Last CoreTech Survey									
850.00	2.46	49.820	849.92	-4.76	2.37	-2.38	1.84	1.12	-80.11
First SDI MWD Survey									
882.00	2.73	49.650	881.89	-3.83	3.48	-3.49	0.84	0.84	-0.53
973.00	1.76	344.960	972.83	-1.08	4.77	-4.77	2.79	-1.07	-71.09
1,064.00	3.78	337.220	1,063.72	3.04	3.24	-3.24	2.25	2.22	-8.51
1,156.00	5.45	335.200	1,155.42	9.80	0.24	-0.21	1.82	1.82	-2.20
1,247.00	5.54	336.790	1,246.00	17.76	-3.31	3.35	0.19	0.10	1.75
1,339.00	8.09	327.910	1,337.34	27.33	-8.50	8.56	2.99	2.77	-9.65
1,430.00	8.88	325.100	1,427.35	38.52	-15.92	16.01	0.98	0.87	-3.09
1,522.00	10.38	318.680	1,518.05	50.57	-25.45	25.57	2.00	1.63	-6.98
1,613.00	13.28	321.400	1,607.11	64.89	-37.39	37.54	3.24	3.19	2.99
1,705.00	15.56	318.940	1,696.20	82.46	-52.09	52.28	2.57	2.48	-2.67
1,796.00	14.42	318.060	1,784.11	100.09	-67.68	67.91	1.28	-1.25	-0.97
1,887.00	13.98	319.120	1,872.33	116.83	-82.45	82.72	0.56	-0.48	1.16
1,979.00	14.25	315.250	1,961.55	133.27	-97.69	98.00	1.07	0.29	-4.21
2,070.00	14.68	324.300	2,049.68	150.59	-112.31	112.66	2.53	0.47	9.95
2,161.00	14.25	321.670	2,137.79	168.74	-125.98	126.38	0.86	-0.47	-2.89
2,253.00	13.81	319.210	2,227.05	185.94	-140.18	140.61	0.81	-0.48	-2.67
2,344.00	13.37	318.330	2,315.50	202.02	-154.27	154.74	0.53	-0.48	-0.97
2,438.00	12.75	325.360	2,407.08	218.68	-167.39	167.90	1.81	-0.66	7.48
2,532.00	11.43	326.590	2,498.99	234.99	-178.42	178.97	1.43	-1.40	1.31
2,626.00	10.55	326.060	2,591.26	249.90	-188.35	188.93	0.94	-0.94	-0.56
2,720.00	8.00	332.130	2,684.03	262.82	-196.21	196.83	2.90	-2.71	6.46
2,813.00	3.87	338.540	2,776.51	271.47	-200.39	201.02	4.49	-4.44	6.89
2,907.00	1.14	347.510	2,870.41	275.34	-201.75	202.40	2.93	-2.90	9.54
3,001.00	1.58	7.550	2,964.39	277.53	-201.78	202.43	0.68	0.47	21.32
3,095.00	1.67	134.020	3,058.37	277.87	-200.63	201.28	3.09	0.10	134.54
3,189.00	2.11	118.900	3,152.32	276.08	-198.13	198.77	0.70	0.47	-16.09
3,283.00	2.37	109.760	3,246.25	274.59	-194.78	195.43	0.47	0.28	-9.72
3,376.00	0.70	108.710	3,339.21	273.75	-192.44	193.08	1.80	-1.80	-1.13
3,470.00	1.06	156.260	3,433.20	272.77	-191.54	192.18	0.83	0.38	50.59
3,564.00	1.49	189.740	3,527.18	270.77	-191.40	192.03	0.90	0.46	35.62
3,659.00	1.58	185.000	3,622.14	268.25	-191.72	192.35	0.16	0.09	-4.99
3,753.00	1.58	72.940	3,716.12	267.34	-190.60	191.22	2.79	0.00	-119.21
3,848.00	1.41	61.690	3,811.09	268.28	-188.32	188.94	0.36	-0.18	-11.84
3,942.00	1.49	17.740	3,905.06	269.99	-186.92	187.56	1.16	0.09	-46.76
4,036.00	1.32	18.090	3,999.04	272.18	-186.22	186.85	0.18	-0.18	0.37
4,130.00	1.23	18.360	4,093.01	274.17	-185.56	186.20	0.10	-0.10	0.29
4,225.00	1.58	18.270	4,187.98	276.38	-184.83	185.48	0.37	0.37	-0.09
4,318.00	1.32	29.960	4,280.95	278.53	-183.89	184.54	0.42	-0.28	12.57

Company:	Bill Barrett Corp.	Local Co-ordinate Reference:	Well Anschutz Equus Farms 4-62-29-5764C
Project:	Weld County, CO NAD 83	TVD Reference:	GL 4634.9' & KB 16.5' @ 4651.40ft (Cade 24)
Site:	Anschutz Equus Farms 4-62-28_27 SWSW Pad [GOOD]	MD Reference:	GL 4634.9' & KB 16.5' @ 4651.40ft (Cade 24)
Well:	Anschutz Equus Farms 4-62-29-5764C	North Reference:	True
Wellbore:	OH	Survey Calculation Method:	Minimum Curvature
Design:	OH	Database:	Casper District

Survey									
Measured Depth (ft)	Inclination (°)	Azimuth (°)	Vertical Depth (ft)	+N/-S (ft)	+E/-W (ft)	Vertical Section (ft)	Dogleg Rate (°/100ft)	Build Rate (°/100ft)	Turn Rate (°/100ft)
4,413.00	0.53	118.820	4,375.95	279.26	-182.96	183.61	1.49	-0.83	93.54
4,507.00	0.88	130.510	4,469.94	278.59	-182.03	182.68	0.40	0.37	12.44
4,601.00	0.88	142.370	4,563.93	277.54	-181.04	181.69	0.19	0.00	12.62
4,695.00	0.88	154.940	4,657.92	276.32	-180.30	180.94	0.20	0.00	13.37
4,788.00	1.14	287.390	4,750.91	275.95	-180.88	181.52	1.99	0.28	142.42
4,882.00	1.49	296.000	4,844.88	276.76	-182.87	183.51	0.43	0.37	9.16
4,976.00	1.32	315.600	4,938.86	278.07	-184.72	185.37	0.54	-0.18	20.85
5,070.00	1.32	307.430	5,032.83	279.50	-186.34	186.99	0.20	0.00	-8.69
5,164.00	1.58	300.050	5,126.80	280.81	-188.32	188.98	0.34	0.28	-7.85
5,258.00	0.97	280.270	5,220.78	281.60	-190.23	190.88	0.79	-0.65	-21.04
5,352.00	1.32	269.460	5,314.76	281.73	-192.09	192.75	0.44	0.37	-11.50
5,445.00	0.62	134.640	5,407.75	281.37	-192.81	193.46	1.95	-0.75	-144.97
5,539.00	0.53	120.930	5,501.75	280.79	-192.07	192.73	0.17	-0.10	-14.59
5,633.00	0.26	318.940	5,595.75	280.73	-191.84	192.49	0.83	-0.29	-172.33
5,727.00	0.26	264.980	5,689.75	280.87	-192.19	192.85	0.25	0.00	-57.40
First SDI MWD Curve Survey									
5,765.00	2.67	285.457	5,727.73	281.10	-193.13	193.79	6.38	6.33	53.89
Curve KOP									
5,821.00	6.24	286.690	5,783.55	282.32	-197.30	197.96	6.38	6.38	2.20
5,914.00	17.06	281.590	5,874.50	286.52	-215.56	216.23	11.68	11.63	-5.48
6,008.00	23.04	279.300	5,962.77	292.27	-247.25	247.93	6.42	6.36	-2.44
6,102.00	32.62	274.120	6,045.81	297.08	-290.78	291.48	10.50	10.19	-5.51
6,195.00	43.70	270.520	6,118.83	299.18	-348.09	348.79	12.15	11.91	-3.87
6,289.00	52.23	268.230	6,181.72	298.32	-417.83	418.53	9.25	9.07	-2.44
6,383.00	58.56	269.810	6,235.08	297.04	-495.15	495.84	6.87	6.73	1.68
6,477.00	71.14	269.200	6,274.95	296.28	-580.06	580.75	13.40	13.38	-0.65
6,571.00	80.55	267.700	6,297.91	293.80	-671.07	671.75	10.13	10.01	-1.60
6,628.00	85.74	266.120	6,304.71	290.74	-727.56	728.24	9.51	9.11	-2.77
Last SDI MWD Curve Survey									
6,762.00	87.92	267.830	6,312.12	283.68	-861.15	861.81	2.07	1.63	1.28
First SDI MWD Lateral Survey									
6,856.00	89.30	268.100	6,314.40	280.35	-955.06	955.72	1.50	1.47	0.29
6,950.00	89.87	269.950	6,315.08	278.75	-1,049.04	1,049.69	2.06	0.61	1.97
7,043.00	90.17	268.640	6,315.05	277.60	-1,142.03	1,142.68	1.45	0.32	-1.41
7,137.00	89.93	268.630	6,314.97	275.36	-1,236.01	1,236.65	0.26	-0.26	-0.01
7,231.00	90.03	270.210	6,315.00	274.41	-1,330.00	1,330.64	1.68	0.11	1.68
7,325.00	90.67	271.400	6,314.43	275.73	-1,423.99	1,424.63	1.44	0.68	1.27
7,419.00	88.86	270.910	6,314.81	277.63	-1,517.96	1,518.61	1.99	-1.93	-0.52
7,513.00	88.89	270.390	6,316.66	278.69	-1,611.94	1,612.59	0.55	0.03	-0.55
7,606.00	90.74	271.230	6,316.96	280.01	-1,704.92	1,705.57	2.18	1.99	0.90
7,700.00	89.53	271.060	6,316.74	281.89	-1,798.90	1,799.56	1.30	-1.29	-0.18
7,794.00	88.69	270.210	6,318.20	282.93	-1,892.88	1,893.54	1.27	-0.89	-0.90
7,889.00	89.26	270.730	6,319.90	283.71	-1,987.86	1,988.52	0.81	0.60	0.55

Company:	Bill Barrett Corp.	Local Co-ordinate Reference:	Well Anschutz Equus Farms 4-62-29-5764C
Project:	Weld County, CO NAD 83	TVD Reference:	GL 4634.9' & KB 16.5' @ 4651.40ft (Cade 24)
Site:	Anschutz Equus Farms 4-62-28_27 SWSW Pad [GOOD]	MD Reference:	GL 4634.9' & KB 16.5' @ 4651.40ft (Cade 24)
Well:	Anschutz Equus Farms 4-62-29-5764C	North Reference:	True
Wellbore:	OH	Survey Calculation Method:	Minimum Curvature
Design:	OH	Database:	Casper District

Survey									
Measured Depth (ft)	Inclination (°)	Azimuth (°)	Vertical Depth (ft)	+N/-S (ft)	+E/-W (ft)	Vertical Section (ft)	Dogleg Rate (°/100ft)	Build Rate (°/100ft)	Turn Rate (°/100ft)
7,982.00	89.60	270.900	6,320.82	285.03	-2,080.85	2,081.51	0.41	0.37	0.18
8,076.00	88.86	267.870	6,322.08	284.02	-2,174.82	2,175.48	3.32	-0.79	-3.22
8,170.00	89.16	268.430	6,323.71	280.99	-2,268.76	2,269.41	0.68	0.32	0.60
8,264.00	90.03	268.770	6,324.37	278.69	-2,362.73	2,363.38	0.99	0.93	0.36
8,358.00	90.07	268.610	6,324.29	276.54	-2,456.71	2,457.35	0.18	0.04	-0.17
8,452.00	89.36	265.760	6,324.76	271.93	-2,550.58	2,551.21	3.12	-0.76	-3.03
8,546.00	88.89	268.500	6,326.19	267.22	-2,644.44	2,645.06	2.96	-0.50	2.91
8,640.00	89.60	271.450	6,327.43	267.18	-2,738.42	2,739.04	3.23	0.76	3.14
8,734.00	89.78	271.570	6,327.94	269.66	-2,832.39	2,833.01	0.23	0.19	0.13
8,827.00	89.19	271.200	6,328.78	271.91	-2,925.36	2,925.99	0.75	-0.63	-0.40
8,921.00	89.19	271.570	6,330.11	274.18	-3,019.32	3,019.95	0.39	0.00	0.39
9,015.00	89.34	273.240	6,331.31	278.12	-3,113.23	3,113.87	1.78	0.16	1.78
9,109.00	89.80	273.130	6,332.02	283.34	-3,207.08	3,207.73	0.50	0.49	-0.12
9,203.00	89.33	273.490	6,332.73	288.77	-3,300.92	3,301.59	0.63	-0.50	0.38
9,297.00	89.56	271.510	6,333.64	292.87	-3,394.82	3,395.50	2.12	0.24	-2.11
9,390.00	89.73	272.390	6,334.22	296.03	-3,487.76	3,488.45	0.96	0.18	0.95
9,484.00	89.70	272.990	6,334.69	300.45	-3,581.66	3,582.35	0.64	-0.03	0.64
9,578.00	89.73	271.740	6,335.15	304.33	-3,675.58	3,676.28	1.33	0.03	-1.33
9,672.00	89.87	273.420	6,335.48	308.56	-3,769.48	3,770.19	1.79	0.15	1.79
9,766.00	90.10	273.770	6,335.51	314.45	-3,863.29	3,864.02	0.45	0.24	0.37
9,860.00	88.37	272.450	6,336.76	319.55	-3,957.14	3,957.88	2.31	-1.84	-1.40
9,954.00	88.02	269.610	6,339.72	321.24	-4,051.07	4,051.81	3.04	-0.37	-3.02
10,048.00	87.99	269.450	6,342.99	320.47	-4,145.01	4,145.74	0.17	-0.03	-0.17
10,142.00	89.60	268.670	6,344.97	318.93	-4,238.97	4,239.70	1.90	1.71	-0.83
10,236.00	89.63	268.760	6,345.60	316.82	-4,332.94	4,333.67	0.10	0.03	0.10
10,330.00	89.70	268.310	6,346.15	314.42	-4,426.91	4,427.63	0.48	0.07	-0.48
10,425.00	89.46	267.830	6,346.85	311.22	-4,521.85	4,522.57	0.56	-0.25	-0.51
10,518.00	89.90	267.450	6,347.37	307.39	-4,614.77	4,615.48	0.63	0.47	-0.41
10,610.00	89.97	267.610	6,347.47	303.42	-4,706.69	4,707.38	0.19	0.08	0.17
10,701.00	90.00	267.700	6,347.50	299.70	-4,797.61	4,798.30	0.10	0.03	0.10
10,793.00	90.13	267.530	6,347.39	295.87	-4,889.53	4,890.21	0.23	0.14	-0.18
10,885.00	89.93	269.030	6,347.34	293.11	-4,981.49	4,982.16	1.64	-0.22	1.63
10,976.00	90.00	268.420	6,347.40	291.08	-5,072.46	5,073.13	0.67	0.08	-0.67
11,067.00	89.49	268.520	6,347.80	288.65	-5,163.43	5,164.09	0.57	-0.56	0.11
11,158.00	90.07	269.210	6,348.15	286.85	-5,254.41	5,255.07	0.99	0.64	0.76
11,250.00	88.42	268.980	6,349.37	285.40	-5,346.39	5,347.04	1.81	-1.79	-0.25
11,341.00	88.31	269.000	6,351.96	283.79	-5,437.34	5,437.99	0.12	-0.12	0.02
11,432.00	88.09	268.620	6,354.82	281.91	-5,528.27	5,528.92	0.48	-0.24	-0.42
11,524.00	88.46	269.500	6,357.59	280.40	-5,620.22	5,620.86	1.04	0.40	0.96
11,615.00	88.32	269.680	6,360.15	279.75	-5,711.18	5,711.82	0.25	-0.15	0.20
11,707.00	89.36	270.220	6,362.01	279.67	-5,803.16	5,803.80	1.27	1.13	0.59
11,798.00	88.69	269.880	6,363.56	279.75	-5,894.15	5,894.78	0.83	-0.74	-0.37
11,890.00	89.50	270.990	6,365.01	280.44	-5,986.13	5,986.77	1.49	0.88	1.21

Company:	Bill Barrett Corp.	Local Co-ordinate Reference:	Well Anschutz Equus Farms 4-62-29-5764C
Project:	Weld County, CO NAD 83	TVD Reference:	GL 4634.9' & KB 16.5' @ 4651.40ft (Cade 24)
Site:	Anschutz Equus Farms 4-62-28_27 SWSW Pad [GOOD]	MD Reference:	GL 4634.9' & KB 16.5' @ 4651.40ft (Cade 24)
Well:	Anschutz Equus Farms 4-62-29-5764C	North Reference:	True
Wellbore:	OH	Survey Calculation Method:	Minimum Curvature
Design:	OH	Database:	Casper District

Survey									
Measured Depth (ft)	Inclination (°)	Azimuth (°)	Vertical Depth (ft)	+N/-S (ft)	+E/-W (ft)	Vertical Section (ft)	Dogleg Rate (°/100ft)	Build Rate (°/100ft)	Turn Rate (°/100ft)
11,981.00	90.67	272.210	6,364.88	282.99	-6,077.09	6,077.74	1.86	1.29	1.34
12,072.00	90.77	272.090	6,363.73	286.40	-6,168.02	6,168.67	0.17	0.11	-0.13
12,164.00	89.87	270.820	6,363.22	288.73	-6,259.98	6,260.64	1.69	-0.98	-1.38
12,255.00	89.87	270.870	6,363.43	290.08	-6,350.97	6,351.64	0.05	0.00	0.05
12,347.00	89.63	270.420	6,363.83	291.11	-6,442.97	6,443.63	0.55	-0.26	-0.49
12,438.00	89.43	270.710	6,364.57	292.01	-6,533.96	6,534.63	0.39	-0.22	0.32
12,529.00	89.50	270.670	6,365.42	293.11	-6,624.95	6,625.62	0.09	0.08	-0.04
12,621.00	89.56	269.220	6,366.18	293.02	-6,716.94	6,717.61	1.58	0.07	-1.58
12,712.00	89.70	269.820	6,366.77	292.25	-6,807.94	6,808.60	0.68	0.15	0.66
12,803.00	89.33	267.090	6,367.54	289.80	-6,898.89	6,899.55	3.03	-0.41	-3.00
12,895.00	89.56	270.540	6,368.43	287.90	-6,990.86	6,991.51	3.76	0.25	3.75
12,986.00	89.16	269.720	6,369.44	288.11	-7,081.85	7,082.50	1.00	-0.44	-0.90
13,077.00	89.60	271.430	6,370.43	289.02	-7,172.84	7,173.49	1.94	0.48	1.88
13,169.00	89.87	274.520	6,370.85	293.79	-7,264.70	7,265.37	3.37	0.29	3.36
13,260.00	88.72	271.870	6,371.97	298.86	-7,355.54	7,356.22	3.17	-1.26	-2.91
13,352.00	88.49	271.790	6,374.21	301.80	-7,447.47	7,448.15	0.26	-0.25	-0.09
13,444.00	88.42	271.090	6,376.69	304.11	-7,539.40	7,540.09	0.76	-0.08	-0.76
13,535.00	89.43	272.670	6,378.40	307.10	-7,630.33	7,631.03	2.06	1.11	1.74
13,626.00	89.26	269.990	6,379.44	309.21	-7,721.30	7,722.00	2.95	-0.19	-2.95
13,717.00	90.77	271.410	6,379.42	310.32	-7,812.28	7,812.99	2.28	1.66	1.56
13,809.00	89.36	270.730	6,379.31	312.04	-7,904.27	7,904.97	1.70	-1.53	-0.74
13,900.00	89.26	269.580	6,380.41	312.29	-7,995.26	7,995.97	1.27	-0.11	-1.26
13,991.00	89.40	269.300	6,381.47	311.40	-8,086.25	8,086.95	0.34	0.15	-0.31
14,082.00	89.50	269.670	6,382.35	310.58	-8,177.24	8,177.94	0.42	0.11	0.41
14,174.00	88.62	267.390	6,383.86	308.22	-8,269.19	8,269.89	2.66	-0.96	-2.48
14,265.00	89.36	267.950	6,385.46	304.52	-8,360.10	8,360.79	1.02	0.81	0.62
14,356.00	89.40	267.110	6,386.45	300.60	-8,451.01	8,451.69	0.92	0.04	-0.92
14,448.00	89.77	268.960	6,387.11	297.44	-8,542.95	8,543.62	2.05	0.40	2.01
14,539.00	89.93	268.670	6,387.35	295.56	-8,633.93	8,634.59	0.36	0.18	-0.32
14,631.00	90.44	268.010	6,387.05	292.90	-8,725.89	8,726.55	0.91	0.55	-0.72
14,721.00	89.80	268.860	6,386.86	290.44	-8,815.85	8,816.51	1.18	-0.71	0.94
14,813.00	91.24	269.730	6,386.03	289.31	-8,907.84	8,908.49	1.83	1.57	0.95
14,905.00	90.71	269.880	6,384.46	288.99	-8,999.82	9,000.47	0.60	-0.58	0.16
14,995.00	89.19	268.990	6,384.54	288.11	-9,089.82	9,090.46	1.96	-1.69	-0.99
15,086.00	89.50	268.990	6,385.58	286.50	-9,180.80	9,181.44	0.34	0.34	0.00
15,177.00	88.42	270.240	6,387.23	285.89	-9,271.78	9,272.42	1.82	-1.19	1.37
15,268.00	88.90	270.770	6,389.36	286.69	-9,362.75	9,363.39	0.79	0.53	0.58
15,360.00	89.36	271.600	6,390.76	288.60	-9,454.71	9,455.36	1.03	0.50	0.90
15,451.00	88.82	271.160	6,392.21	290.79	-9,545.68	9,546.33	0.77	-0.59	-0.48
15,543.00	88.20	269.890	6,394.60	291.63	-9,637.64	9,638.29	1.54	-0.67	-1.38
15,633.00	89.03	270.220	6,396.77	291.72	-9,727.61	9,728.27	0.99	0.92	0.37
15,725.00	89.80	271.180	6,397.71	292.84	-9,819.60	9,820.26	1.34	0.84	1.04

Company:	Bill Barrett Corp.	Local Co-ordinate Reference:	Well Anschutz Equus Farms 4-62-29-5764C
Project:	Weld County, CO NAD 83	TVD Reference:	GL 4634.9' & KB 16.5' @ 4651.40ft (Cade 24)
Site:	Anschutz Equus Farms 4-62-28_27 SWSW Pad [GOOD]	MD Reference:	GL 4634.9' & KB 16.5' @ 4651.40ft (Cade 24)
Well:	Anschutz Equus Farms 4-62-29-5764C	North Reference:	True
Wellbore:	OH	Survey Calculation Method:	Minimum Curvature
Design:	OH	Database:	Casper District

Survey									
Measured Depth (ft)	Inclination (°)	Azimuth (°)	Vertical Depth (ft)	+N/-S (ft)	+E/-W (ft)	Vertical Section (ft)	Dogleg Rate (°/100ft)	Build Rate (°/100ft)	Turn Rate (°/100ft)
15,817.00	89.80	270.080	6,398.03	293.85	-9,911.59	9,912.25	1.20	0.00	-1.20
15,908.00	90.13	270.320	6,398.09	294.17	-10,002.59	10,003.25	0.45	0.36	0.26
16,000.00	90.20	269.690	6,397.82	294.18	-10,094.59	10,095.25	0.69	0.08	-0.68
16,094.00	89.87	268.440	6,397.77	292.64	-10,188.57	10,189.23	1.38	-0.35	-1.33
16,188.00	89.87	268.000	6,397.98	289.72	-10,282.53	10,283.18	0.47	0.00	-0.47
16,282.00	90.13	267.530	6,397.98	286.06	-10,376.46	10,377.10	0.57	0.28	-0.50
16,305.00	90.07	267.240	6,397.94	285.01	-10,399.43	10,400.07	1.29	-0.26	-1.26
Last SDI MWD Survey									
16,361.00	90.07	267.240	6,397.87	282.31	-10,455.37	10,456.00	0.00	0.00	0.00
Projection to TD									

Design Annotations				
Measured Depth (ft)	Vertical Depth (ft)	Local Coordinates		Comment
		+N/-S (ft)	+E/-W (ft)	
116.50	116.50	-0.18	0.15	First CoreTech Survey
691.50	691.46	-6.02	-0.28	Last CoreTech Survey
850.00	849.92	-4.76	2.37	First SDI MWD Survey
5,727.00	5,689.75	280.87	-192.19	First SDI MWD Curve Survey
5,765.00	5,727.73	281.10	-193.13	Curve KOP
6,628.00	6,304.71	290.74	-727.56	Last SDI MWD Curve Survey
6,762.00	6,312.12	283.68	-861.15	First SDI MWD Lateral Survey
16,305.00	6,397.94	285.01	-10,399.43	Last SDI MWD Survey
16,361.00	6,397.87	282.31	-10,455.37	Projection to TD

Checked By: _____ Approved By: _____ Date: _____