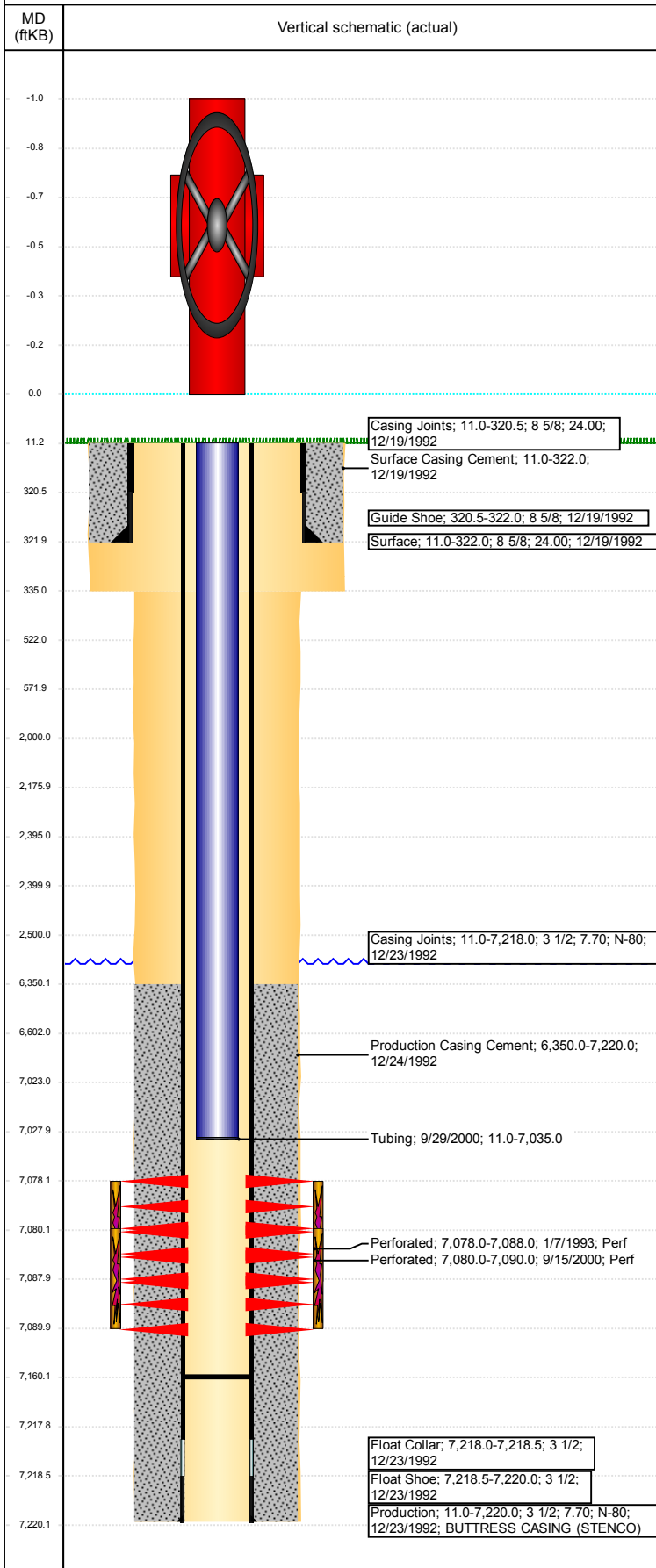


Well Name: SWANSON 29-14

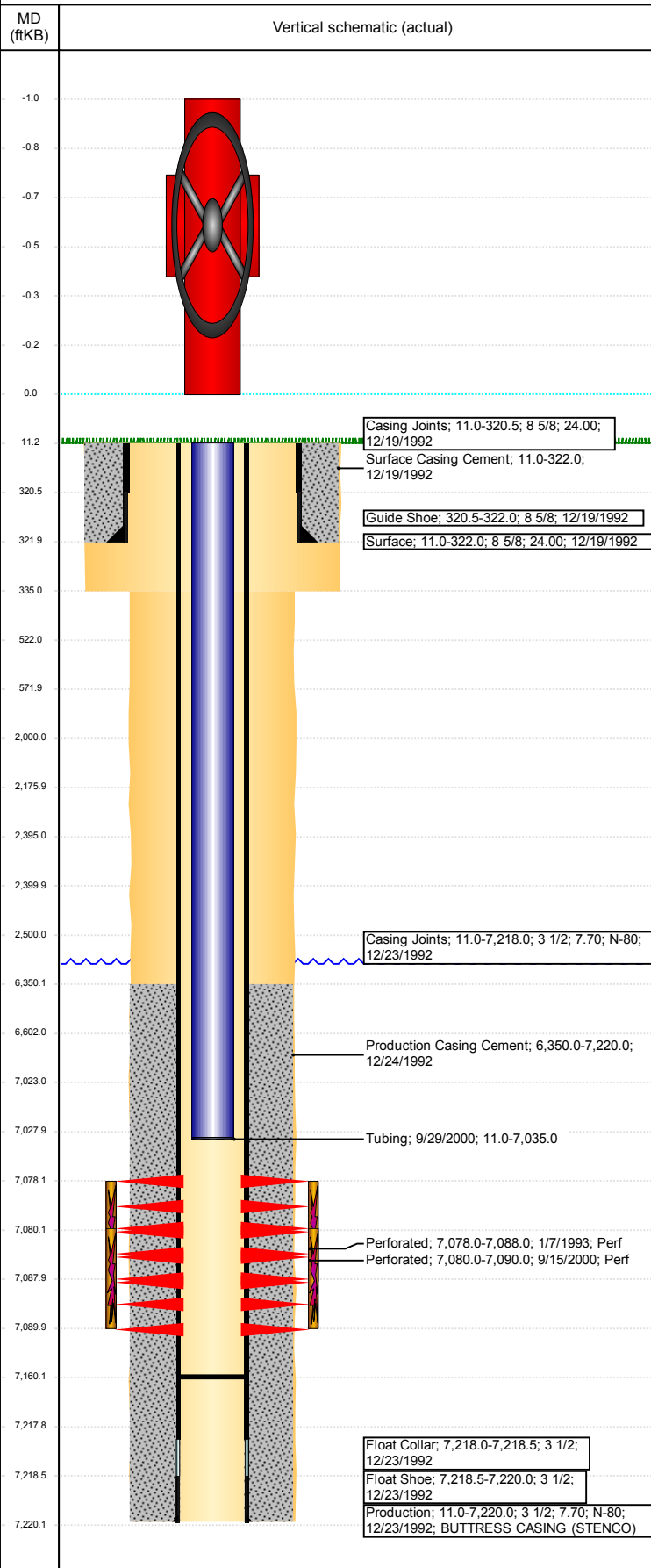
VERTICAL - ORIGINAL HOLE, 12/6/2017 12:23:06 PM



Well Header							
API 05-123-16613	Business Unit DJ BASIN		District 15		Well Config VERTICAL		
Original KB Elevation (ft) 4,737	KB - GL / MSL (ftKB) 11.00		Spud Date 12/18/1992		P & A Date		
Comment							
Directions To Well 29/66 S .8 W .2 N INTO							
Congressional Location							
Quarter 3 SE	Quarter 4 NE	Section 29	Township 6	Twntshp N/S Dir N	Range 66	Range E/W Dir W	
Bottom Hole Location							
North-South Distance (ft)		From N or S Line		East-West Distance (ft)		From E or W Line	
Plug Back Total Depths							
Date	Depth (ftKB)	Method		Com			
12/24/1992	7,189.0	TAG		CALCULATED DURING PROD CEMENT JOB			
1/7/1993	7,160.0			VERIFIED W/RIG TALLY			
Wellbore Sections							
Section Des		Size (in)		Act Top, MD (ftKB)		Act Btm, MD (ftKB)	
SURFACE		12 1/4		11		335	
PRODUCTION		7 7/8		335		7,220	
Zone Statuses							
Zone Name	Status Date	Status	Fluid Type	Job	Prod Method		
CODELL	1/28/1993	PR	Oil		Flowing		
CODELL	10/3/2000	PR	Oil				
CODELL	11/15/2010	PR	Water				
CODELL	12/12/2015	PR					
CODELL	1/28/2016	PR					
Casing Strings							
Surface, 322.0ftKB							
Casing Description Surface	Run Date 12/19/1992	OD (in) 8 5/8	Wt/Len (l...) 24.00	Grade	Top, MD (ft...) 11.0	MD (ftKB) 322.0	
Production, 7,220.0ftKB							
Casing Description Production	Run Date 12/23/1992	OD (in) 3 1/2	Wt/Len (l...) 7.70	Grade N-80	Top, MD (ft...) 11.0	MD (ftKB) 7,220.0	
Cement							
Description Surface Casing Cement				Top Depth (ftKB) 11.0		Bottom Depth (ftKB) 322.0	
Description Production Casing Cement				Top Depth (ftKB) 6,350.0		Bottom Depth (ftKB) 7,220.0	
Description Cement Plug				Top Depth (ftKB) 6,602.0		Bottom Depth (ftKB) 7,023.0	
Description Cement Squeeze				Top Depth (ftKB) 2,000.0		Bottom Depth (ftKB) 2,500.0	
Description Balance Plug				Top Depth (ftKB) 2,400.0		Bottom Depth (ftKB) 2,500.0	
Description Cement Plug				Top Depth (ftKB) 2,176.0		Bottom Depth (ftKB) 2,395.0	
Description Shoe Plug				Top Depth (ftKB) 522.0		Bottom Depth (ftKB) 572.0	
Description Shoe Plug				Top Depth (ftKB) 11.0		Bottom Depth (ftKB) 522.0	
Tubing Strings							
Tubing Description Tubing	Run Date 9/29/2000	String... 2 1/16	ID (in)	Wt (lb/ft)	Grade	Len (ft) 7,024.00	Set De...
Tubing Components							
Item Des	OD (in)	Wt (lb/ft)	Grade	Jts	Len (ft)	Btm (ftKB)	Btm (TVD) (ftKB)
Tubing	2 1/16			214	7,022.50	7,033.5	
Seal Nipple	2 1/16				1.00	7,034.5	
Mule Shoe	2 1/16				0.50	7,035.0	
Other In Hole							
Run Date	Des				OD (in)	Top (ftKB)	Btm (ftKB)
12/4/2017	Cement Retainer				3.086	2,395.0	2,400.0
12/4/2017	Cast Iron Bridge Plug				3.086	7,023.0	7,028.0

Well Name: SWANSON 29-14

VERTICAL - ORIGINAL HOLE, 12/6/2017 12:23:07 PM



Logs			
Date	Type	Top, MD (ftKB)	Btm, MD (ftKB)
12/23/1992	COMPENSATED DENSITY / GR	4,000.0	7,187.0
12/23/1992	DUAL INDUCTION	322.0	7,212.0
12/29/1992	SONIC	6,200.0	7,120.0

Perforation Data					
Linked Zone	Bnch/St g	Sum of Entered Shot Total	Top (ftKB)	Btm (ftKB)	Date
CODELL, ORIGINAL HOLE		0	2,500.00	2,500.00	12/4/2017
CODELL, ORIGINAL HOLE		0	7,078.00	7,088.00	1/7/1993
CODELL, ORIGINAL HOLE		40	7,080.00	7,090.00	9/15/2000
Total (Sum)		40			

Stimulation Intervals		
Start Date 1/8/1993	Primary Job Type DRILLING/COMPLETION - ORIGINAL	
Technical Result	Tech Result Details	Tech Result Note
Comment		

Start Date 9/27/2000	Primary Job Type RECOMPLETION	
Technical Result	Tech Result Details	Tech Result Note
Comment		