

HALLIBURTON

iCem[®] Service

TEP ROCKY MOUNTAIN LLC-EBUS

For: Terra

Date: Thursday, September 14, 2017

SR 432-12 Surface

API#05-045-23295

Sincerely,

Grand Junction Cement Engineering

2.0 Real-Time Job Summary

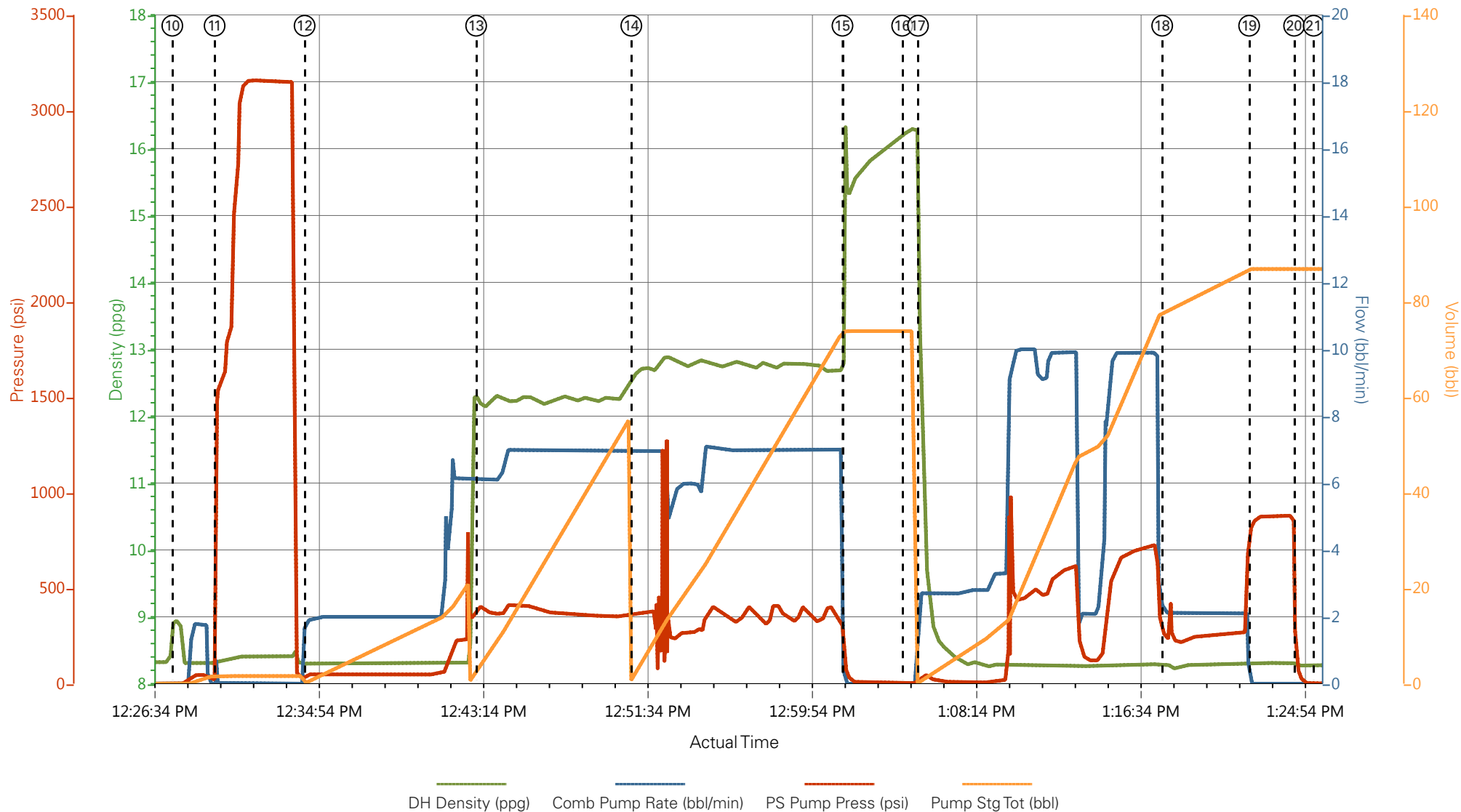
2.1 Job Event Log

Type	Seq. No.	Graph Label	Date	Time	Source	DH Density (ppg)	Comb Pump Rate (bbl/min)	PS Pump Press (psi)	Pump Stg Tot (bbl)	Comments
Event	1	Call Out	9/14/2017	06:30:00	USER					
Event	2	Pre-Convoy Safety Meeting	9/14/2017	07:00:00	USER					
Event	3	Crew Leave Yard	9/14/2017	10:00:00	USER					
Event	4	Arrive At Loc	9/14/2017	11:15:00	USER					
Event	5	Assessment Of Location Safety Meeting	9/14/2017	11:20:00	USER					
Event	6	Spot Equipment	9/14/2017	11:25:00	USER					
Event	7	Pre-Rig Up Safety Meeting	9/14/2017	11:30:00	USER					
Event	8	Rig-Up Equipment	9/14/2017	11:35:00	USER					
Event	9	Pre-Job Safety Meeting	9/14/2017	12:15:00	USER					
Event	10	Start Job	9/14/2017	12:27:37	COM5					TD: 1139 TP: 1132 SJ: 44.1 MW: 9.6 9 5/8" 32.3#/FT CSG IN 13 1/2" OH WATER TEST: PH: 6.5 POTASSIUM: 700 CHLORIDES: 0 SULFATES: <200 TEMP: 64 DEGREES
Event	11	Test Lines	9/14/2017	12:29:46	COM5	8.33	0.00	3000.00	2.0	3000 PSI TEST
Event	12	Pump Spacer 1	9/14/2017	12:34:20	COM5	8.33	4.00	125.00	20.0	FRESH H2O SPACER
Event	13	Pump Lead Cement	9/14/2017	12:43:02	COM5	12.30	7.00	401.00	53.0	125 SKS @ 12.3 PPG 2.38 YLD 13.77 GAL/SK H2O
Event	14	Pump Tail Cement	9/14/2017	12:50:54	COM5	12.80	7.00	366.00	65.8	175 SKS @ 12.8 PPG 2.11 YLD 11.78 GAL/SK H2O
Event	15	Shutdown	9/14/2017	13:01:36	COM5					
Event	16	Drop Top Plug	9/14/2017	13:04:38	COM5					
Event	17	Pump Displacement	9/14/2017	13:05:26	COM5	8.33	10.0	535.00	85.6	FRESH H2O DISPLACEMENT. HAD TO SLOW RATE @

APPROX 45 AWAY DUE TO RIG'S CELLAR PUMP SHUTTING DOWN.

Event	18	Slow Rate	9/14/2017	13:17:49	USER	8.33	2.00	248.00	75.0	
Event	19	Bump Plug	9/14/2017	13:22:13	COM5	8.33	2.00	873.00	85.6	PLUG BUMPED AT CALCULATED DISPLACEMENT
Event	20	Check Floats	9/14/2017	13:24:30	USER					FLOATS HELD
Event	21	End Job	9/14/2017	13:25:30	COM5					
Event	22	Post-Job Safety Meeting (Pre Rig-Down)	9/14/2017	13:30:00	USER					
Event	23	Rig-Down Equipment	9/14/2017	13:35:00	USER					GOOD CIRCULATION THROUGHOUT JOB. PIPE WAS LEFT STATIC THROUGHOUT JOB. CIRCULATED 25 BBL CEMENT TO SURFACE. 30# SUGAR USED, NO ADD HOURS CHARGED
Event	24	Pre-Convoy Safety Meeting	9/14/2017	14:10:00	USER					
Event	25	Crew Leave Location	9/14/2017	14:15:00	USER					THANK YOU FOR CHOOSING HALLIBURTON CEMENTING OF GRAND JUNCTION, COLORADO ANTHONY ANDREWS AND CREW

TEP - SR 432-12 - 9 5/8" SURFACE



- | | | | |
|---|--------------------------|---------------------|---|
| ① Call Out | ⑧ Rig-Up Equipment | ⑮ Shutdown | 22 Post-Job Safety Meeting (Pre Rig-Down) |
| ② Pre-Convoy Safety Meeting | ⑨ Pre-Job Safety Meeting | ⑯ Drop Top Plug | 23 Rig-Down Equipment |
| ③ Crew Leave Yard | ⑩ Start Job | ⑰ Pump Displacement | 24 Pre-Convoy Safety Meeting |
| ④ Arrive At Loc | ⑪ Test Lines | ⑱ Slow Rate | 25 Crew Leave Location |
| ⑤ Assessment Of Location Safety Meeting | ⑫ Pump Spacer 1 | ⑲ Bump Plug | |
| ⑥ Spot Equipment | ⑬ Pump Lead Cement | 20 Check Floats | |
| ⑦ Pre-Rig Up Safety Meeting | ⑭ Pump Tail Cement | 21 End Job | |

▼ **HALLIBURTON** | iCem® Service

Created: 2017-09-14 11:47:31, Version: 4.2.393

Edit

Customer: TEP ROCKY MOUNTAIN LLC-EBUS

Job Date: 9/14/2017 11:48:47 AM

Well: YOUNBERG SR 432-12

Representative: BOBBY BROWN

Sales Order #: 904298026

ELITE 1: JAMES LEIST/ ANTHONY ANDREWS

TEP - SR 432-12 - 9 5/8" SURFACE

