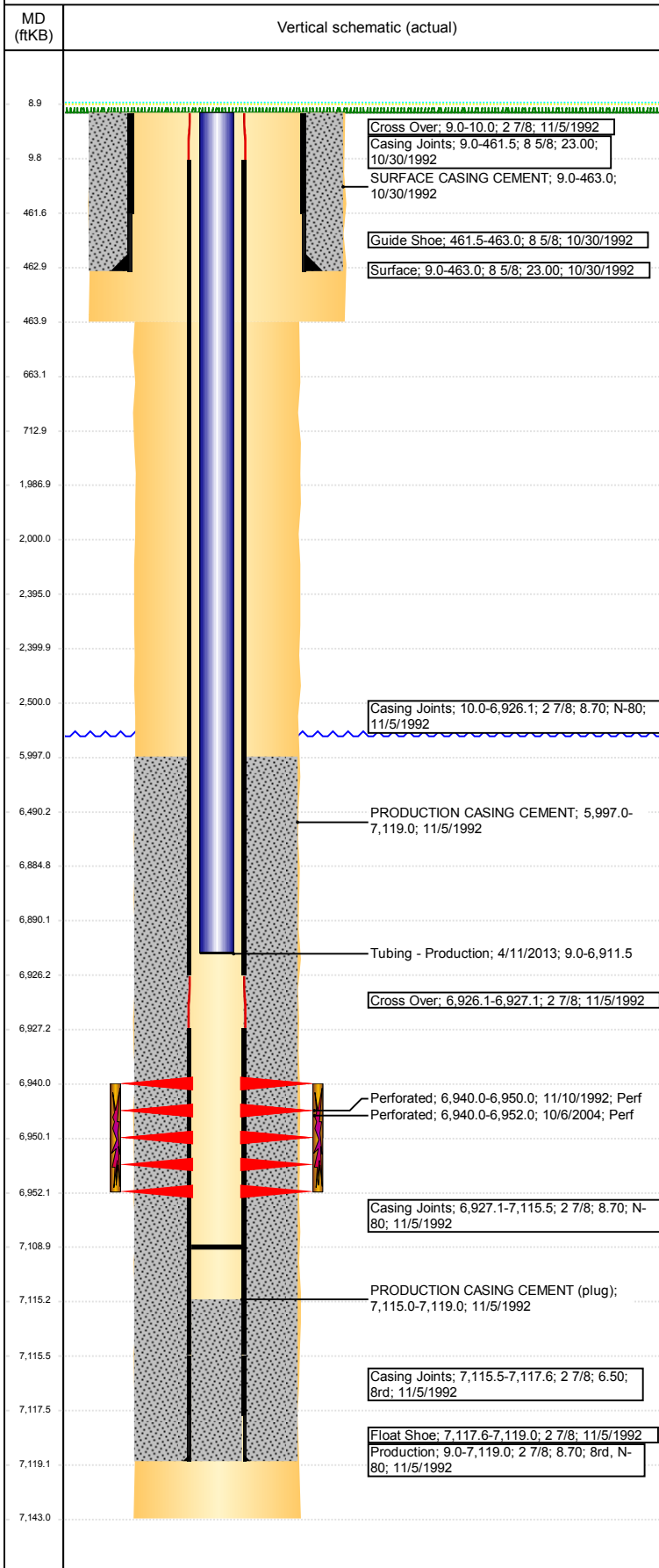


Well Name: WARREN E35-13

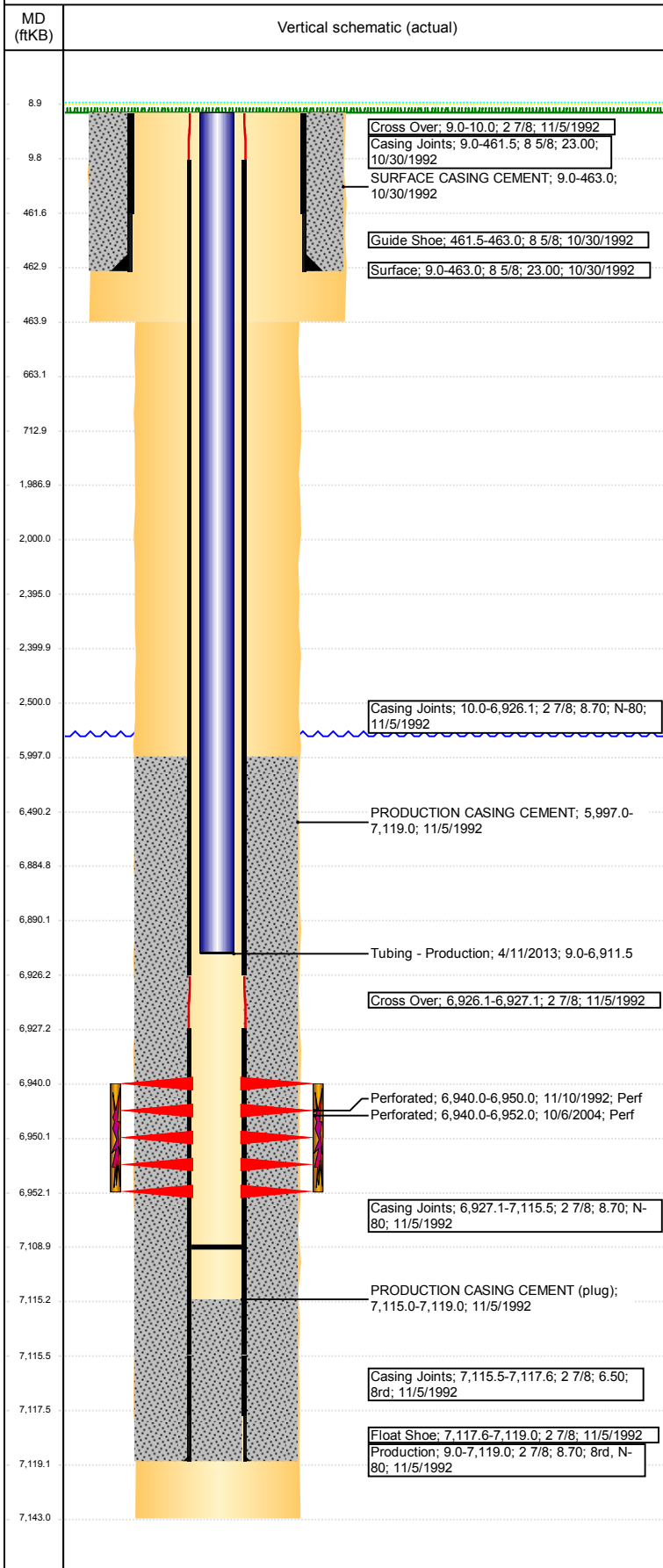
VERTICAL - ORIGINAL HOLE, 12/5/2017 3:47:47 PM



Well Header							
API 05-123-16222	Business Unit DJ BASIN	District 15	Well Config VERTICAL				
Original KB Elevation (ft) 4,666	KB - GL / MSL (ftKB) 9.00	Spud Date 10/23/1992	P & A Date				
Comment							
Directions To Well RD 45 & RD 62, EAST 1/10, NORTH 1/10 INTO.							
Congressional Location							
Quarter 3 SW	Quarter 4 SW	Section 35	Township 6	Twnshp N/S Dir N	Range 65	Range E/W Dir W	
Bottom Hole Location							
North-South Distance (ft)		From N or S Line		East-West Distance (ft)		From E or W Line	
Plug Back Total Depths							
Date	Depth (ftKB)	Method		Com			
11/5/1992	7,115.0	CASING TALLY		FLOAT COLLAR			
11/10/1992	7,097.0	CASED HOLE LOG		DEPTH LOGGER ON CBL			
2/27/2009	7,026.7	TAG		CLEANED OUT FILL TO 7026' KB			
4/11/2013	7,109.0	TAG		WIRELINE TAG			
Wellbore Sections							
Section Des		Size (in)		Act Top, MD (ftKB)		Act Btm, MD (ftKB)	
SURFACE		12 1/4		9		464	
PRODUCTION		7 7/8		464		7,143	
Zone Statuses							
Zone Name	Status Date	Status	Fluid Type	Job	Prod Method		
CODELL	12/10/1992	PR	Gas	DRILLING/CO...	Flowing		
CODELL	10/8/2004	PR	Gas	RE-FRAC, 10/5...			
CODELL	4/6/2010	PR	Water				
CODELL	1/19/2015	PR					
Casing Strings							
Surface, 463.0ftKB							
Casing Description Surface	Run Date 10/30/1992	OD (in) 8 5/8	Wt/Len (l... 23.00	Grade	Top, MD (ft... 9.0	MD (ftKB) 463.0	
Production, 7,119.0ftKB							
Casing Description Production	Run Date 11/5/1992	OD (in) 2 7/8	Wt/Len (l... 8.70	Grade N-80	Top, MD (ft... 9.0	MD (ftKB) 7,119.0	
Cement							
Description SURFACE CASING CEMENT				Top Depth (ftKB) 9.0		Bottom Depth (ftKB) 463.0	
Description PRODUCTION CASING CEMENT				Top Depth (ftKB) 5,997.0		Bottom Depth (ftKB) 7,119.0	
Description Cement Plug				Top Depth (ftKB) 6,490.0		Bottom Depth (ftKB) 6,885.0	
Description Cement Squeeze				Top Depth (ftKB) 2,000.0		Bottom Depth (ftKB) 2,500.0	
Description Balance Plug				Top Depth (ftKB) 2,400.0		Bottom Depth (ftKB) 2,500.0	
Description Cement Plug				Top Depth (ftKB) 1,987.0		Bottom Depth (ftKB) 2,395.0	
Description Shoe Plug				Top Depth (ftKB) 663.0		Bottom Depth (ftKB) 713.0	
Description Shoe Plug				Top Depth (ftKB) 9.0		Bottom Depth (ftKB) 663.0	
Tubing Strings							
Tubing Description Tubing - Production	Run Date 2/27/2009	String... 1.66	ID (in) 1.38	Wt (lb/ft) 2.33	Grade J-55	Len (ft) 6,924.86	Set De...
Tubing Components							
Item Des	OD (in)	Wt (lb/ft)	Grade	Jts	Len (ft)	Btm (ftKB)	Btm (TVD) (ftKB)
Tubing	1.66	2.33	J-55	210	6,923.76	6,930.3	
Seating Nipple w/welded collar	1.66			1	1.10	6,931.4	
Tubing Description Tubing - Production	Run Date 4/11/2013	String... 1.66	ID (in) 1.38	Wt (lb/ft) 2.30	Grade J-55	Len (ft) 6,902.46	Set De...
Tubing Components							
Item Des	OD (in)	Wt (lb/ft)	Grade	Jts	Len (ft)	Btm (ftKB)	Btm (TVD) (ftKB)
Tubing	1.66	2.30	J-55	210	6,901.24	6,910.2	

Well Name: WARREN E35-13

VERTICAL - ORIGINAL HOLE, 12/5/2017 3:47:48 PM



Tubing Components							
Item Des	OD (in)	Wt (lb/ft)	Grade	Jts	Len (ft)	Btm (ftKB)	Btm (TVD) (ftKB)
Notched Seat Nipple	1.66			1	1.22	6,911.5	

Other In Hole					
Run Date	Des	OD (in)	Top (ftKB)	Btm (ftKB)	
4/10/2013	Cast Iron Bridge Plug	2.3	6,885.0	6,890.0	
12/4/2017	Cement Retainer	2.3	2,395.0	2,400.0	

Logs			
Date	Type	Top, MD (ftKB)	Btm, MD (ftKB)
11/5/1992	COMPENSATED DENSITY	3,500.0	7,123.0
11/5/1992	INDUCTION	3,500.0	4,400.0
11/10/1992	CBL/CCL/GR	5,880.0	7,092.0

Perforation Data					
Linked Zone	Bnch/St g	Sum of Entered Shot Total	Top (ftKB)	Btm (ftKB)	Date
CODELL, ORIGINAL HOLE		40	6,940.00	6,950.00	11/10/1992
CODELL, ORIGINAL HOLE		48	6,940.00	6,952.00	10/6/2004
Total (Sum)		88			

Stimulation Intervals		
Start Date	Primary Job Type	
11/11/1992	DRILLING/COMPLETION - ORIGINAL	
Technical Result	Tech Result Details	Tech Result Note
Comment		
Start Date	Primary Job Type	
10/7/2004	RE-FRAC	
Technical Result	Tech Result Details	Tech Result Note
Comment		