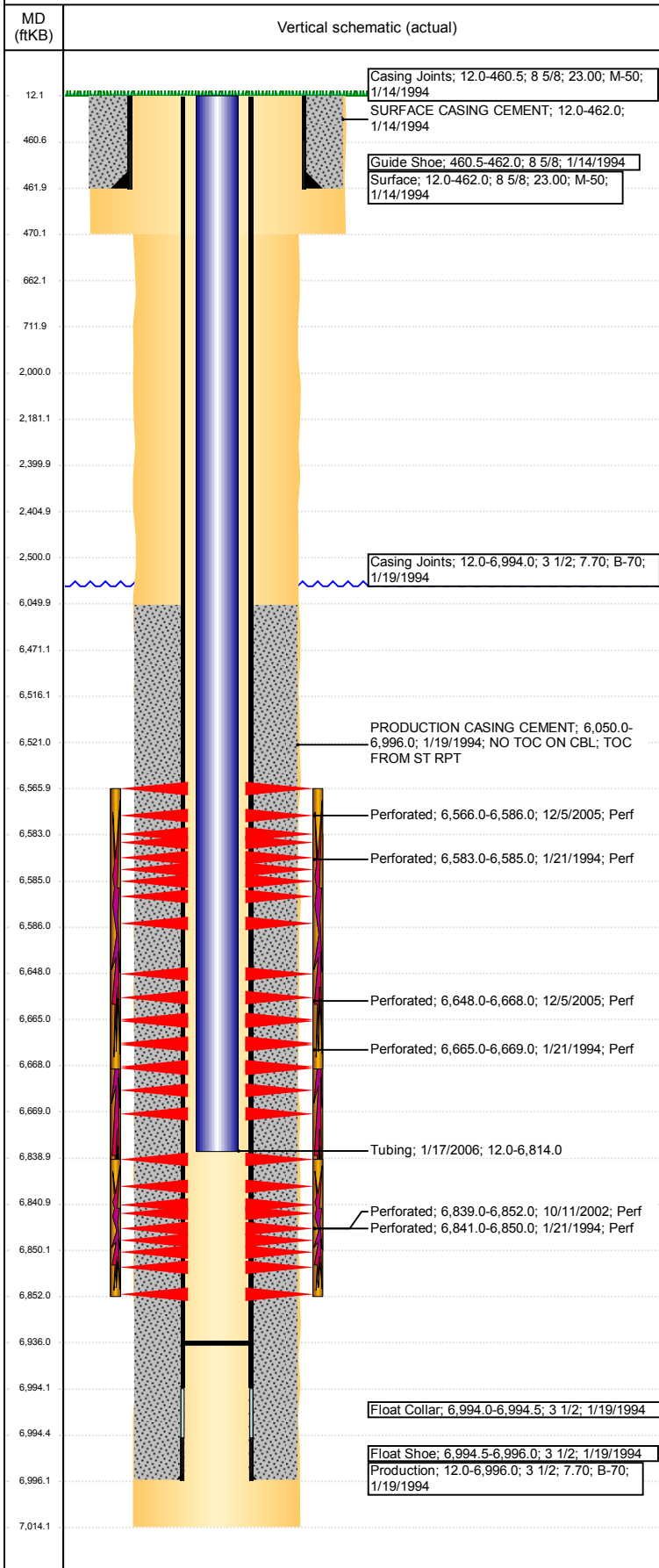


**Well Name: SITZMAN 04-0114**

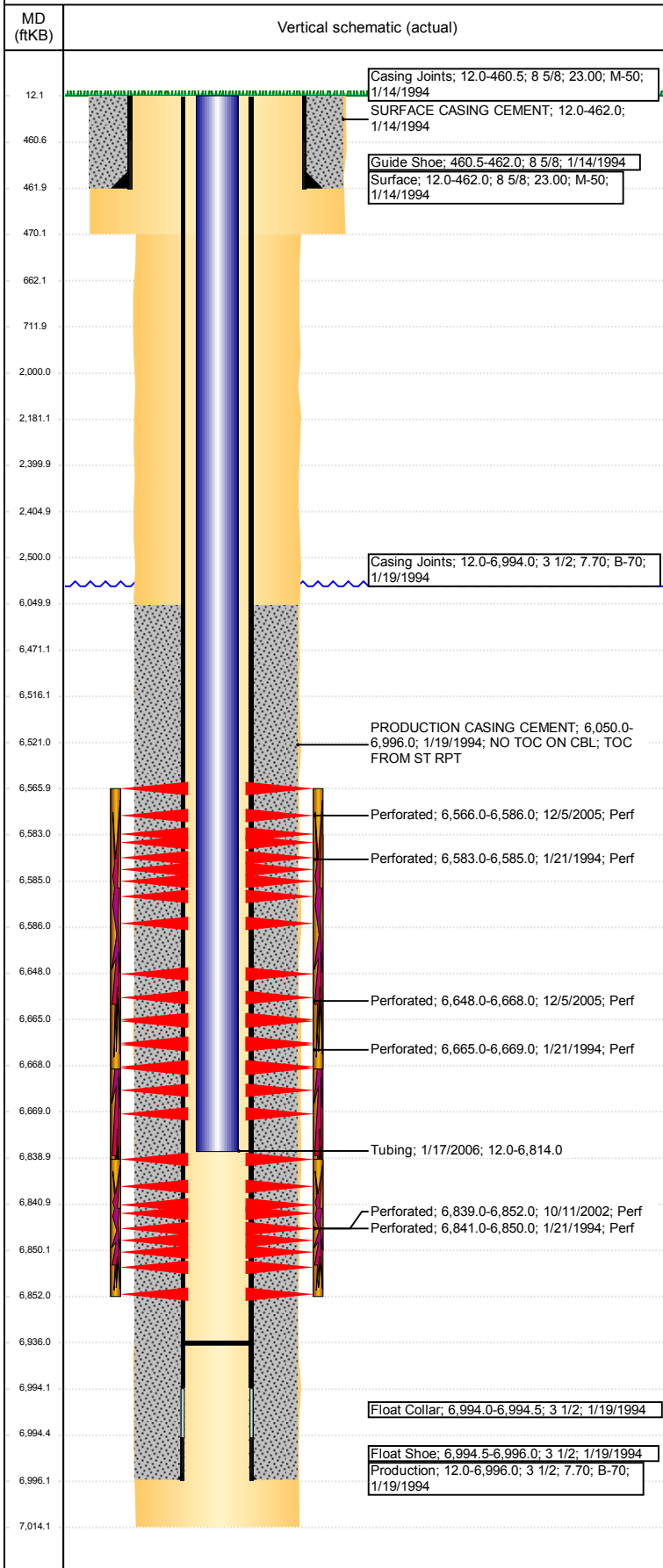
VERTICAL - ORIGINAL HOLE, 12/5/2017 12:06:47 PM



Well Header							
API 05-123-17894		Business Unit DJ BASIN		District 15		Well Config VERTICAL	
Original KB Elevation (ft) 4,698		KB - GL / MSL (ftKB) 12.00		Spud Date 1/14/1994		P & A Date	
Comment							
Directions To Well XRDS BOF 50/55 W.3 E.2 S INTO							
Congressional Location							
Quarter 3 NE	Quarter 4 NE	Section 4	Township 4	Twntshp N/S Dir N	Range 64	Range E/W Dir W	
Bottom Hole Location							
North-South Distance (ft)		From N or S Line		East-West Distance (ft)		From E or W Line	
Plug Back Total Depths							
Date	Depth (ftKB)	Method			Com		
1/21/1994	6,936.0	CASED HOLE LOG			DEPTH LOGGER ON CBL		
1/17/2006	6,936.0	TAG			CLEAN OUT TO LAND TUBING		
Wellbore Sections							
Section Des		Size (in)		Act Top, MD (ftKB)		Act Btm, MD (ftKB)	
SURFACE		12 1/4		12		470	
PRODUCTION		7 7/8		470		7,014	
Zone Statuses							
Zone Name	Status Date	Status	Fluid Type	Job	Prod Method		
NIOBRARA	2/7/1994	PR		DRILLING/CO...			
NIOBRARA	12/22/2005	PR		RE-FRAC, 12/2...			
NIOBRARA	1/19/2006	PR		RE-FRAC, 12/2...			
CODELL	2/7/1994	PR		DRILLING/CO...			
CODELL	10/17/2002	PR		RE-FRAC, 10/1...			
CODELL	12/3/2005	SI		RE-FRAC, 12/2...			
CODELL	1/19/2006	PR		RE-FRAC, 12/2...			
Casing Strings							
Surface, 462.0ftKB							
Casing Description Surface		Run Date 1/14/1994	OD (in) 8 5/8	Wt/Len (l... 23.00	Grade M-50	Top, MD (ft... 12.0	MD (ftKB) 462.0
Production, 6,996.0ftKB							
Casing Description Production		Run Date 1/19/1994	OD (in) 3 1/2	Wt/Len (l... 7.70	Grade B-70	Top, MD (ft... 12.0	MD (ftKB) 6,996.0
Cement							
Description SURFACE CASING CEMENT				Top Depth (ftKB) 12.0		Bottom Depth (ftKB) 462.0	
Description PRODUCTION CASING CEMENT				Top Depth (ftKB) 6,050.0		Bottom Depth (ftKB) 6,996.0	
Description Dump Bail				Top Depth (ftKB) 6,471.0		Bottom Depth (ftKB) 6,516.0	
Description Cement Plug				Top Depth (ftKB) 2,181.0		Bottom Depth (ftKB) 2,400.0	
Description Cement Plug				Top Depth (ftKB) 2,405.0		Bottom Depth (ftKB) 2,500.0	
Description Cement Plug				Top Depth (ftKB) 2,000.0		Bottom Depth (ftKB) 2,500.0	
Description Cement Plug				Top Depth (ftKB) 662.0		Bottom Depth (ftKB) 712.0	
Description Cement Plug				Top Depth (ftKB) 12.0		Bottom Depth (ftKB) 662.0	
Tubing Strings							
Tubing Description Tubing		Run Date 1/17/2006	String ... 2 1/16	ID (in) 1.75	Wt (lb/ft) 3.25	Grade J-55	Len (ft) 6,802.00
Set De...							
Tubing Components							
Item Des	OD (in)	Wt (lb/ft)	Grade	Jts	Len (ft)	Btm (ftKB)	Btm (TVD) (ftKB)
Tubing	2 1/16	3.25	J-55	206	6,800.90	6,812.9	
Notched Seating Nipple	2 1/16				1.10	6,814.0	
Other In Hole							
Run Date	Des				OD (in)	Top (ftKB)	Btm (ftKB)
12/4/2017	Cement Retainer				3	2,400.0	2,405.0
12/4/2017	Cast Iron Bridge Plug				3	6,516.0	6,521.0

**Well Name: SITZMAN 04-0114**

VERTICAL - ORIGINAL HOLE, 12/5/2017 12:06:47 PM



Logs			
Date	Type	Top, MD (ftKB)	Btm, MD (ftKB)
1/19/1994	COMPENSATED DENSITY	4,190.0	7,012.0
1/19/1994	INDUCTION	462.0	7,012.0
1/21/1994	CBL/CCL/GR	6,450.0	6,927.0
2/8/2017	GYRO	0.0	6,700.0

Perforation Data					
Linked Zone	Bnch/St g	Sum of Entered Shot Total	Top (ftKB)	Btm (ftKB)	Date
CODELL, ORIGINAL HOLE		0	2,500.00	2,500.00	12/4/2017
NIOBRARA, ORIGINAL HOLE		120	6,566.00	6,586.00	12/5/2005
NIOBRARA, ORIGINAL HOLE		2	6,583.00	6,585.00	1/21/1994
NIOBRARA, ORIGINAL HOLE		120	6,648.00	6,668.00	12/5/2005
NIOBRARA, ORIGINAL HOLE		4	6,665.00	6,669.00	1/21/1994
CODELL, ORIGINAL HOLE		52	6,839.00	6,852.00	10/11/2002
CODELL, ORIGINAL HOLE		9	6,841.00	6,850.00	1/21/1994
<b>Total (Sum)</b>		<b>307</b>			

Stimulation Intervals		
Start Date	Primary Job Type	
1/24/1994	DRILLING/COMPLETION - ORIGINAL	
Technical Result	Tech Result Details	Tech Result Note
Comment		
Start Date	Primary Job Type	
10/16/2002	RE-FRAC	
Technical Result	Tech Result Details	Tech Result Note
Comment		
Start Date	Primary Job Type	
12/21/2005	RE-FRAC	
Technical Result	Tech Result Details	Tech Result Note
Comment		