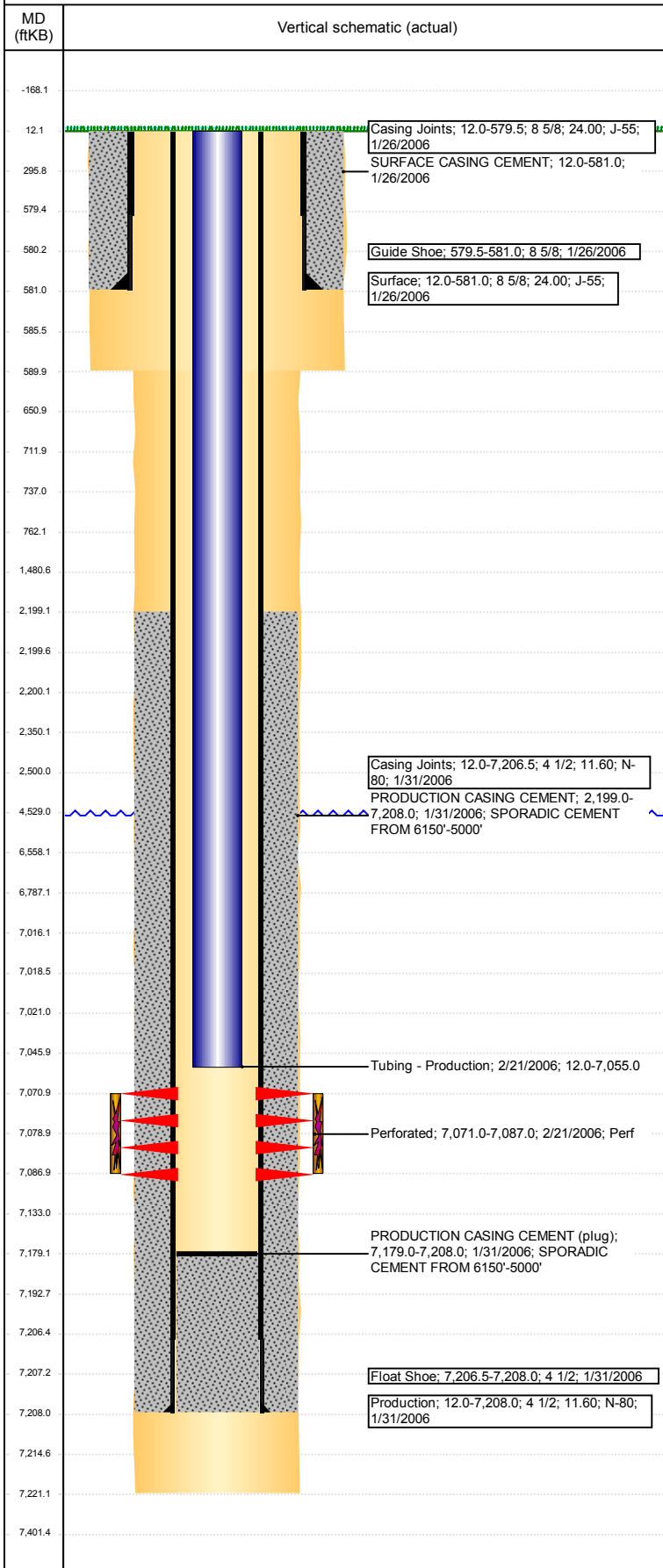


**Well Name: HUNGENBERG E28-11**

VERTICAL - ORIGINAL HOLE, 12/5/2017 12:08:25 PM



Well Header								
API 05-123-23529		Business Unit DJ BASIN		District 15	Well Config VERTICAL			
Original KB Elevation (ft) 4,714		KB - GL / MSL (ftKB) 12.00		Spud Date 1/26/2006		P & A Date		
Comment								
Directions To Well								
Congressional Location								
Quarter 3 NE	Quarter 4 SW	Section 28	Township 6	Twnshp N/S Dir N	Range 65	Range E/W Dir W		
Bottom Hole Location								
North-South Distance (ft) 1,820.0		From N or S Line FSL		East-West Distance (ft) 2,080.0		From E or W Line FWL		
Plug Back Total Depths								
Date	Depth (ftKB)	Method		Com				
1/31/2006	7,193.0	CASING TALLY		GUIDE SHOE W/ BAFFLE				
2/7/2006	7,179.0	CASED HOLE LOG		DEPTH LOGGER ON CBL				
Wellbore Sections								
Section Des		Size (in)	Act Top, MD (ftKB)		Act Btm, MD (ftKB)			
SURFACE		12 1/4	12		590			
PRODUCTION		7 7/8	590		7,221			
Zone Statuses								
Zone Name	Status Date	Status	Fluid Type	Job	Prod Method			
CODELL	3/5/2006	PR	Oil	DRILLING/CO...				
Casing Strings								
Surface, 581.0ftKB								
Casing Description Surface		Run Date 1/26/2006	OD (in) 8 5/8	Wt/Len (l... 24.00	Grade J-55	Top, MD (ft... 12.0	MD (ftKB) 581.0	
Production, 7,208.0ftKB								
Casing Description Production		Run Date 1/31/2006	OD (in) 4 1/2	Wt/Len (l... 11.60	Grade N-80	Top, MD (ft... 12.0	MD (ftKB) 7,208.0	
Cement								
Description SURFACE CASING CEMENT				Top Depth (ftKB) 12.0		Bottom Depth (ftKB) 581.0		
Description PRODUCTION CASING CEMENT				Top Depth (ftKB) 2,199.0		Bottom Depth (ftKB) 7,208.0		
Description Cement Plug				Top Depth (ftKB) 6,558.0		Bottom Depth (ftKB) 7,016.0		
Description Balance Plug				Top Depth (ftKB) 2,200.0		Bottom Depth (ftKB) 2,500.0		
Description Shoe Plug				Top Depth (ftKB) 712.0		Bottom Depth (ftKB) 762.0		
Description Shoe Plug				Top Depth (ftKB) 12.0		Bottom Depth (ftKB) 712.0		
Tubing Strings								
Tubing Description Tubing - Production		Run Date 2/21/2006	String... 2 3/8	ID (in) 2.00	Wt (lb/ft) 4.70	Grade J-55	Len (ft) 7,043.00	Set De...
Tubing Components								
Item Des		OD (in)	Wt (lb/ft)	Grade	Jts	Len (ft)	Btm (ftKB)	Btm (TVD) (ftKB)
Tubing		2 3/8	4.70	J-55	213	7,042.50	7,054.5	
Notched collar		2 3/8			1	0.50	7,055.0	
Other In Hole								
Run Date		Des			OD (in)	Top (ftKB)	Btm (ftKB)	
12/4/2017		Cast Iron Bridge Plug			4	7,016.0	7,021.0	
Logs								
Date		Type				Top, MD (ftKB)	Btm, MD (ftKB)	
1/30/2006		COMPENSATED DENSITY				2,000.0	7,204.0	
1/30/2006		INDUCTION				581.0	7,224.0	
2/7/2006		CBL/CCL/GR				2,100.0	7,178.0	
Perforation Data								
Linked Zone		Bnch/St g	Sum of Entered Shot Total	Top (ftKB)		Btm (ftKB)		Date
CODELL, ORIGINAL HOLE			64	7,071.00		7,087.00		2/21/2006
Total (Sum)			64					

**Well Name: HUNGENBERG E28-11**

VERTICAL - ORIGINAL HOLE, 12/5/2017 12:08:26 PM

## Stimulation Intervals

Start Date 3/3/2006	Primary Job Type DRILLING/COMPLETION - ORIGINAL	
Technical Result	Tech Result Details	Tech Result Note
Comment		

