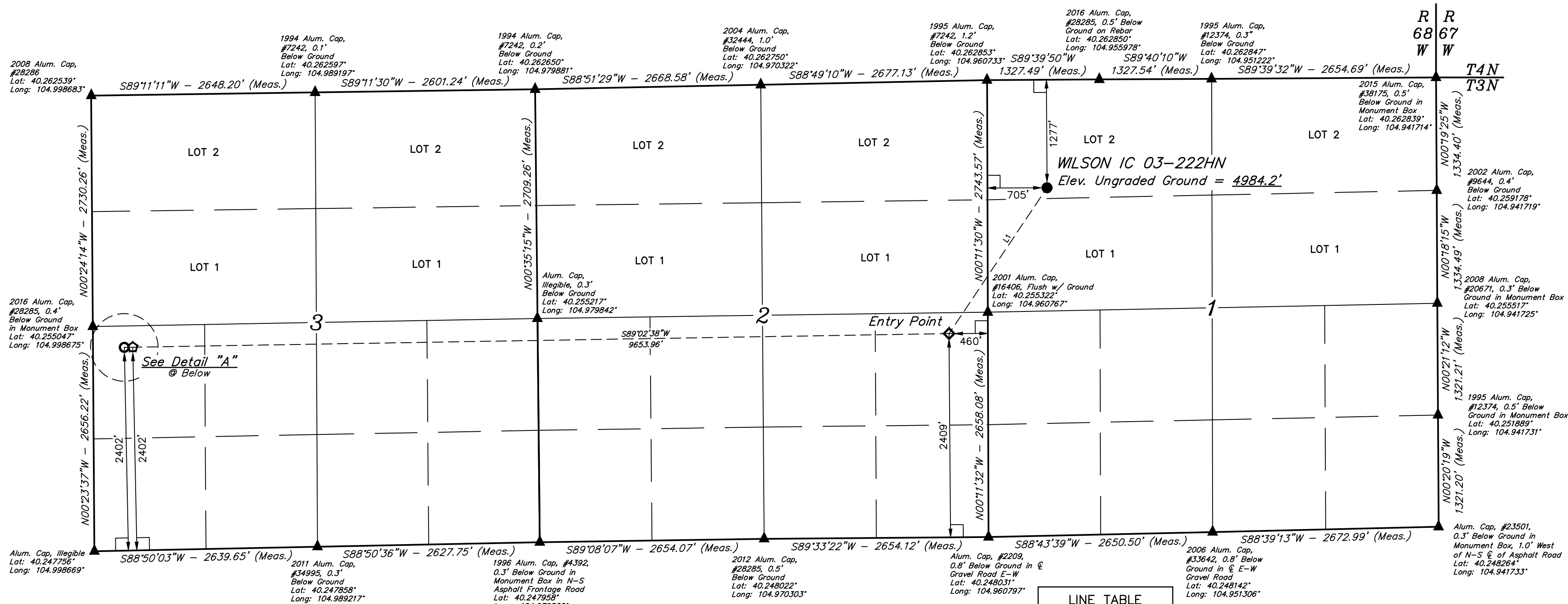
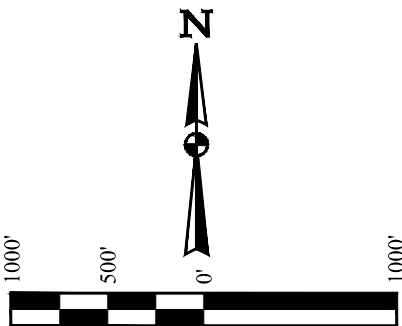


T3N, R68W, 6th P.M.

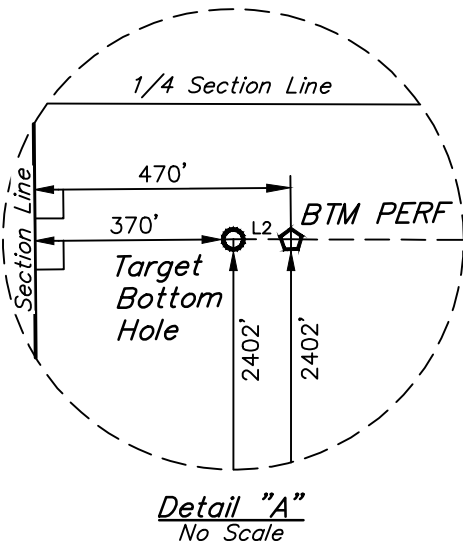
GREAT WESTERN OPERATING COMPANY

WILSON IC 03-222HN  
NW 1/4 NW 1/4, SECTION 1, T3N, R68W, 6th P.M.  
WELD COUNTY, COLORADO

BASIS OF BEARINGS  
BASIS OF BEARINGS IS A G.P.S. OBSERVATION  
BASIS OF ELEVATION  
USGS COOPERATIVE BASE NETWORK CONTROL STATION,  
DESIGNATION 'VERMILYEA'. NGS DATA SHEET LISTS THE NAVD  
88 ELEVATION AS BEING 5026 FEET.



LINE TABLE		
LINE	DIRECTION	LENGTH
L1	S33°55'16\"W	2077.34'
L2	S88°50'03\"W	100.01'



- LEGEND:
- 90° SYMBOL
  - PROPOSED WELLHEAD.
  - ENTRY POINT.
  - BTM PERF.
  - TARGET BOTTOM HOLE.
  - SECTION CORNERS LOCATED. (NAD 83)

NAD 83 (SURFACE LOCATION)	NAD 83 (ENTRY POINT)	NAD 83 (BTM PERF)	NAD 83 (TARGET BOTTOM HOLE)
LATITUDE = 40°15'33.65\" (40.259347)	LATITUDE = 40°15'16.70\" (40.254639)	LATITUDE = 40°15'15.72\" (40.254367)	LATITUDE = 40°15'15.71\" (40.254364)
LONGITUDE = 104°57'29.60\" (104.958222)	LONGITUDE = 104°57'44.70\" (104.962417)	LONGITUDE = 104°59'49.17\" (104.996992)	LONGITUDE = 104°59'50.46\" (104.997350)
NAD 27 (SURFACE LOCATION)	NAD 27 (ENTRY POINT)	NAD 27 (BTM PERF)	NAD 27 (TARGET BOTTOM HOLE)
LATITUDE = 40°15'33.71\" (40.259364)	LATITUDE = 40°15'16.76\" (40.254656)	LATITUDE = 40°15'15.78\" (40.254383)	LATITUDE = 40°15'15.76\" (40.254378)
LONGITUDE = 104°57'27.68\" (104.957689)	LONGITUDE = 104°57'42.78\" (104.961883)	LONGITUDE = 104°59'47.25\" (104.996458)	LONGITUDE = 104°59'48.53\" (104.996814)

REV: 3 10-05-17 K.B. (BTM PERF ADD & TBH CHANGE)



UELS, LLC  
Corporate Office \* 85 South 200 East  
Vernal, UT 84078 \* (435) 789-1017

SURVEYED BY ZANE BULLARD, G.W. 04-11-16 SCALE  
DRAWN BY M.F.D. 07-21-16 1\" = 1000'

WELL LOCATION PLAT