



Photo#1: Overview of Location to North;

October 20, 2016

Inspection Photos: Alfa-State API#081-05352

Debris still on Location

Photo#2:



Photo#3:



October 20, 2016

Inspection Photos: Alfa-State API#081-
05352

Concrete Wash out / Gravel still on Location

Photo#4:



Photo#5



October 20, 2016

Inspection Photos: Alfa-State API#081-
05352

Facilities North of Well are not Reclaimed

Photo#6



Photo#7:



October 20, 2016

Inspection Photos: Alfa-State API#081-05352



Photo#8: Retention Pond / Drainage West of Facilities.

October 20, 2016

Inspection Photos: Alfa-State API#081-05352



Photo#9: Compressor Station Location has been scraped & Buildings removed

October 20, 2016

Inspection Photos: Alfa-State API#081-05352



Photo#10: Concrete Pads remain at Compressor Location.

October 20, 2016

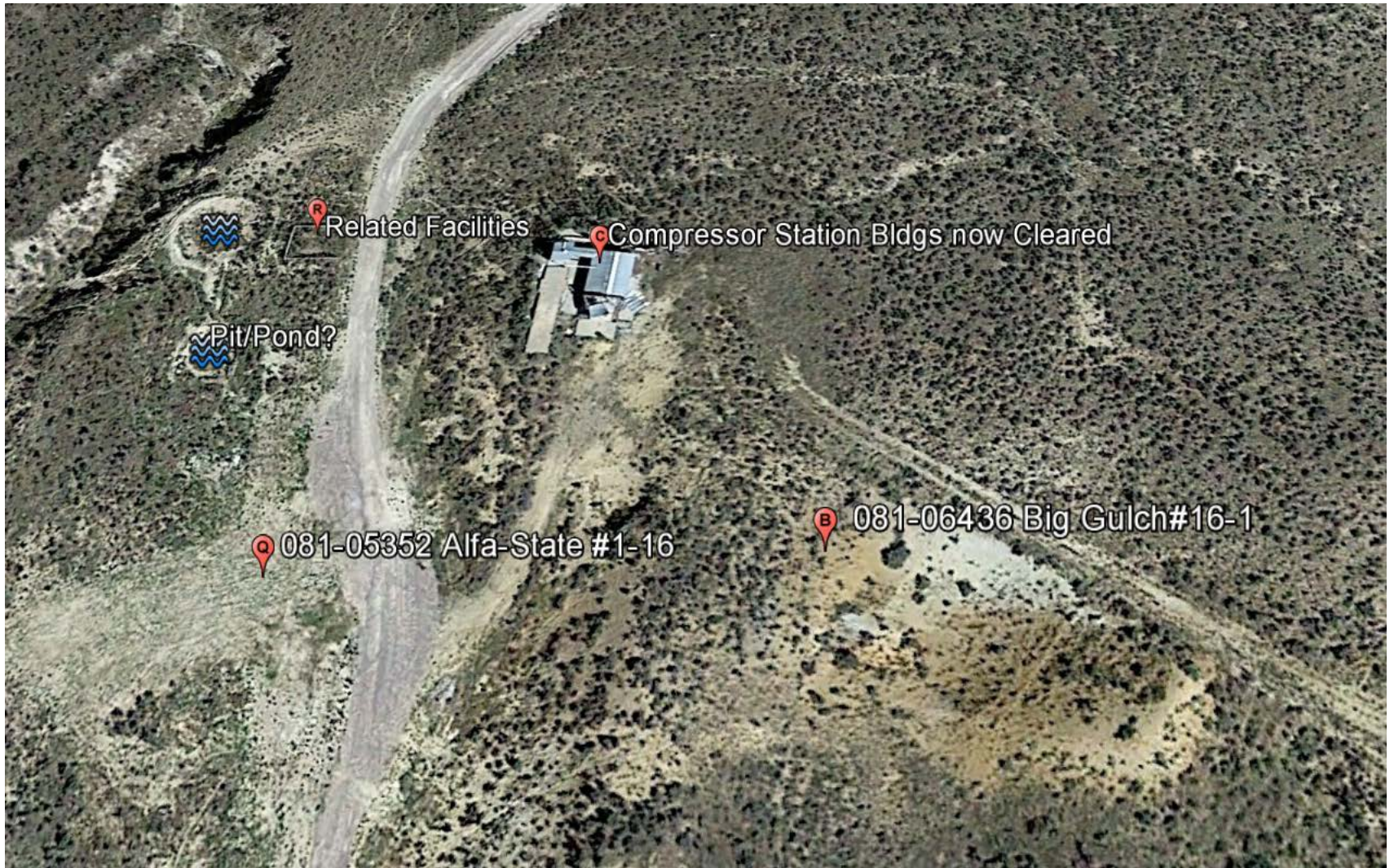
Inspection Photos: Alfa-State API#081-05352



Photo#11: View West to Associated Facilities. Flow lines, Risers remain at Compressor Location East of Well Location.

October 20, 2016

Inspection Photos: Alfa-State API#081-05352



Photo#12: Aerial View of Well and associated Facilities and neighboring Well.