

Photo#1:  
View North over Location ;  
Associated Facilities Marked with Arrow.



Photo#2:  
View South over Location.





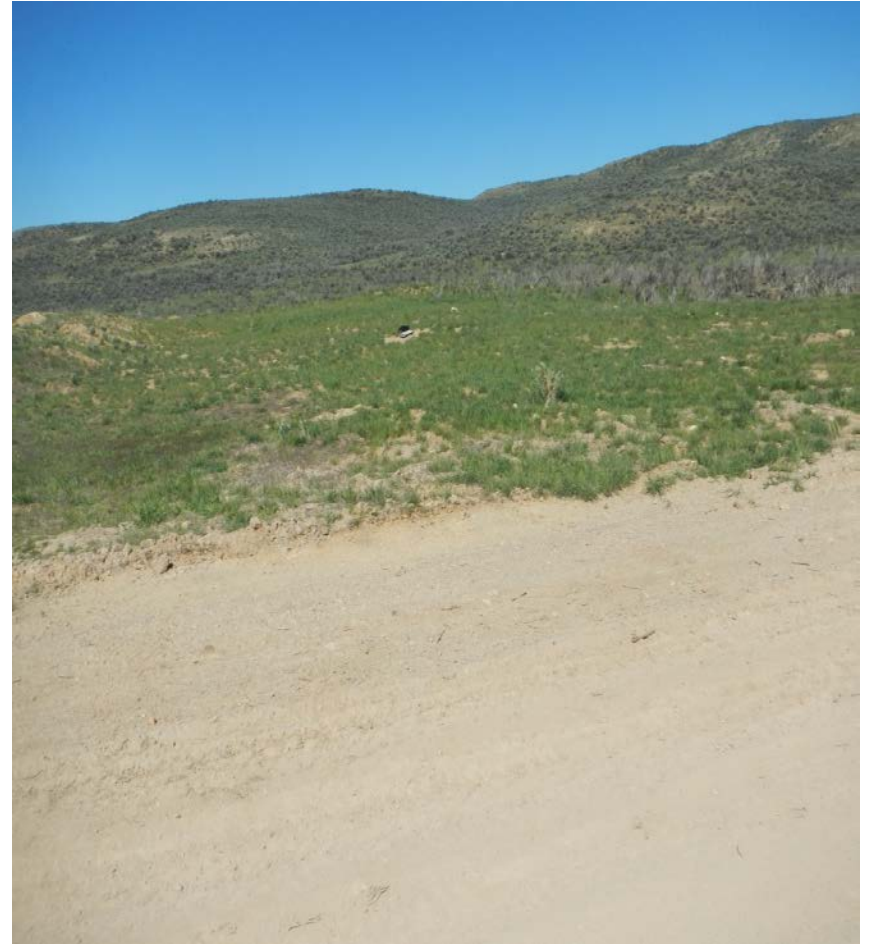
Photo#3:

View East over Location



Photo#4:

View West over Location





Photo#5:  
Gravel on Location .



Photo#6:  
Concrete wash out on Location





Photo#7:

Debris remains on Location



Photo#8:





Photo#9:

View to North of Facilities Located North of Well.



Photo#10:

View to West of same Facilities which appear to feed across Road East to Compressor Station ( Photo #13)





Photo#11

Photo#12:

Retention/ drainage area and Debris West of Facilities



May 12, 2016

Inspection Photos: QuickSilver Alpha State #1-16





Photo#13: View across road to East from Facilities in Photos # 9 & 10; showing Compressor Station, associated Flow lines, Facilities.



Photo#14:

View North at Compressor Station.



Photo#15:

View West at Compressor Station

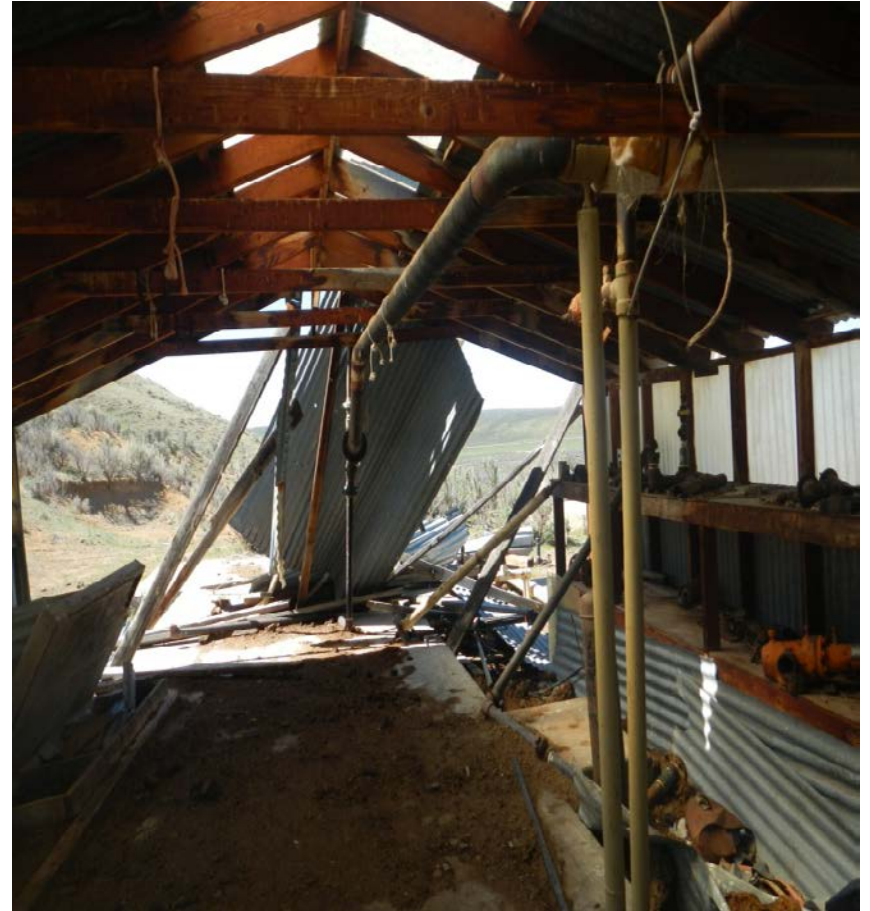
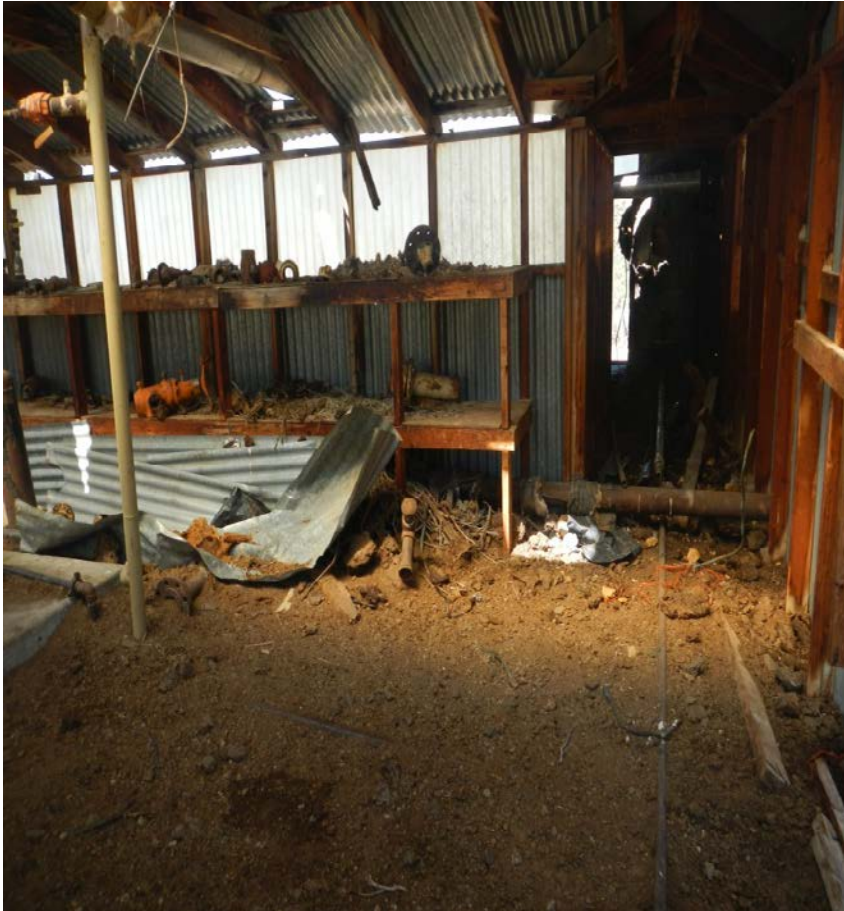




Photo#16:

Photo#17:

Inside Views of Compressor Station Building



May 12, 2016

Inspection Photos: QuickSilver Alpha State #1-16



Photo#18:  
Equipment inside Building



Photo#19:  
View from Bldg to West; showing Facilities photo #9 & 10

