

Photo#1:
Overview of Location from Entry to Northeast.



November 30, 2017



COLORADO
Oil & Gas Conservation
Commission
Department of Natural Resources

Inspection Photos: Laramie Gunderson Loc#452797

Photo#2:
Overview of Location to West.



November 30, 2017



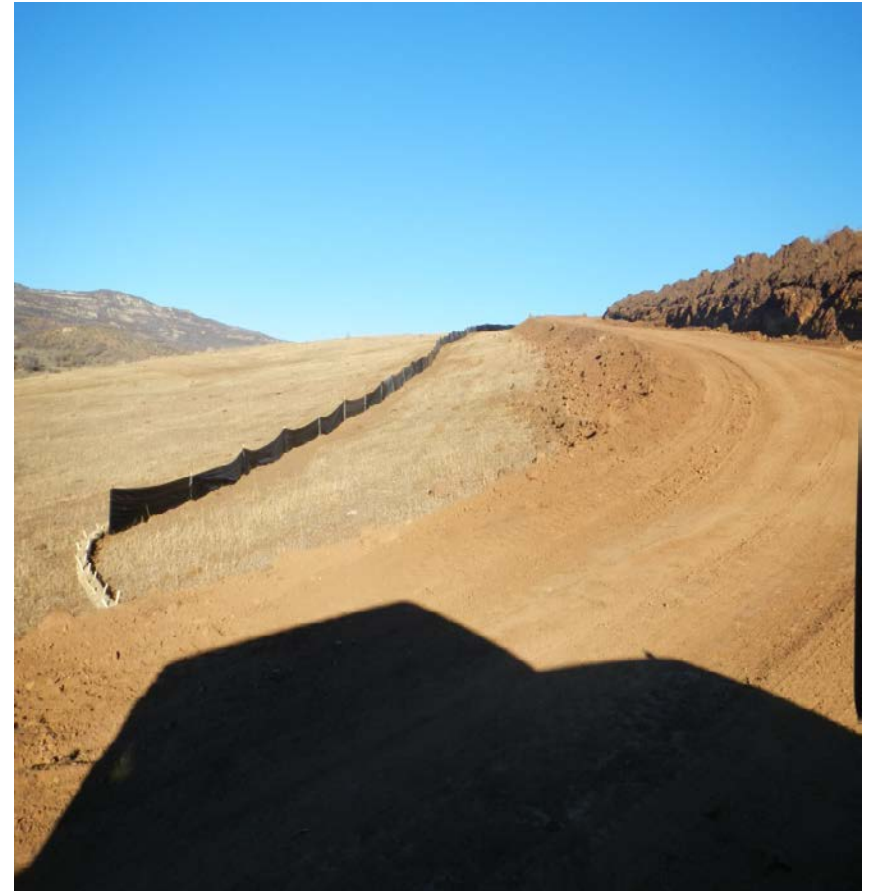
COLORADO
Oil & Gas Conservation
Commission
Department of Natural Resources

Inspection Photos: Laramie Gunderson Loc#452797

Photo#3:

Photo#4:

BMPs installed at each side of Access Road Entry.



November 30, 2017

Photo#5:

Photo#6:

Silt Fence Installed along Access Road & Perimeter of Location.



November 30, 2017



COLORADO
Oil & Gas Conservation
Commission
Department of Natural Resources

Inspection Photos: Laramie Gunderson Loc#452797

Photo#6:

Top soil piled at top of Cut Slope; view to North. Loose piles of Soil are Potential Pollution Sources. Control measures should be implemented to manage stormwater runoff from all potential pollutant sources.



Photo#7:



November 30, 2017



COLORADO
Oil & Gas Conservation
Commission
Department of Natural Resources

Inspection Photos: Laramie Gunderson Loc#452797

Photo#8:

Steep Cut bank side of Access road is awaiting installation of Pipeline. Operator will self inspect; if any Sediment migration is noted BMPs will be installed.



November 30, 2017



COLORADO
Oil & Gas Conservation
Commission
Department of Natural Resources

Inspection Photos: Laramie Gunderson Loc#452797