

# HALLIBURTON

iCem<sup>®</sup> Service

## **Terra Energy Partners**

**For: Terra**

Date: Friday, August 25, 2017

**Federal GM 41-10 Surface PJR**

API#: 05-045-22698-00

Sincerely,

**Grand Junction Cement Engineering**

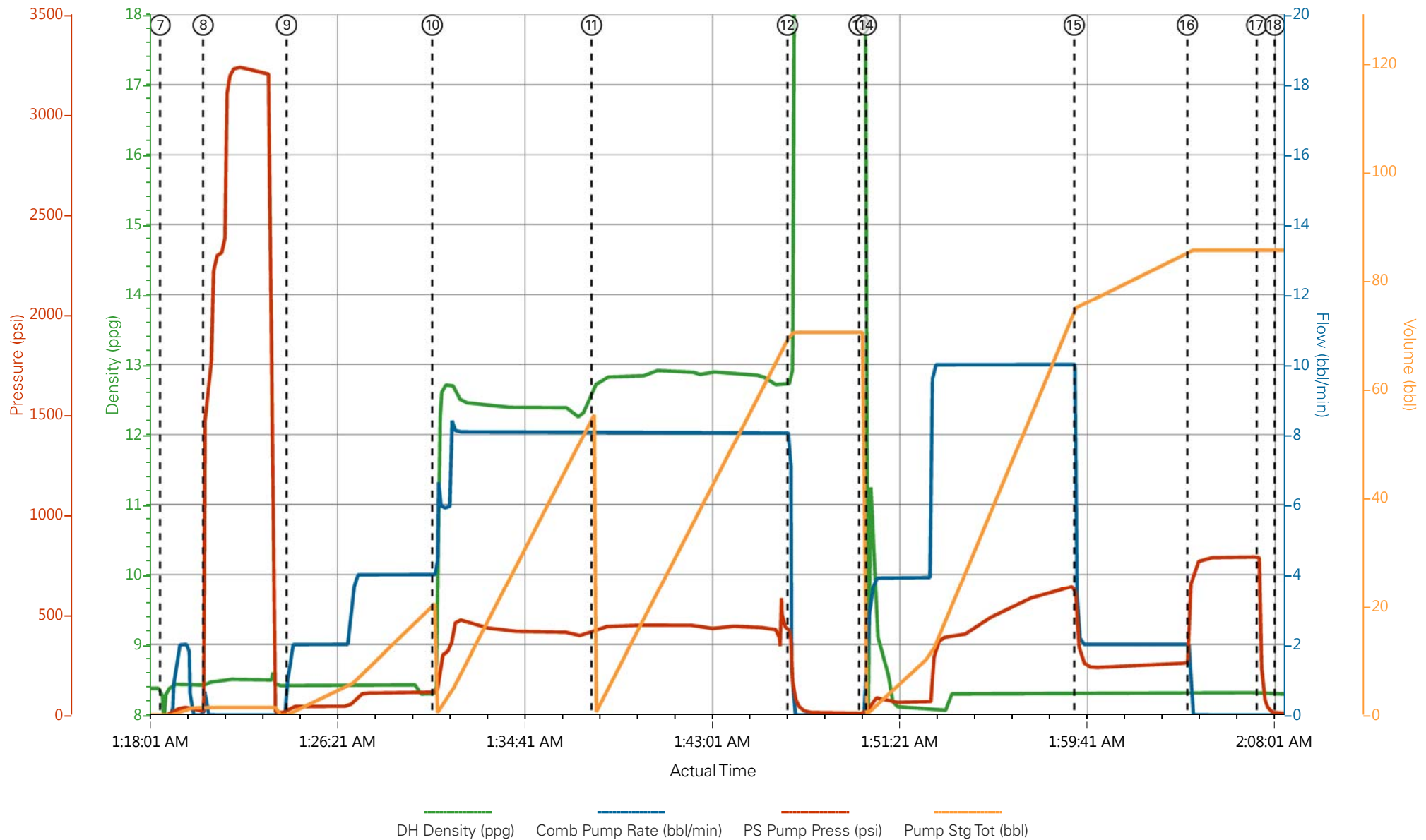
## 2.0 Real-Time Job Summary

## 2.1 Job Event Log

Type	Seq. No.	Graph Label	Date	Time	Source	DH Density (ppg)	Comb Pump Rate (bbl/min)	PS Pump Press (psi)	Pump Stg Tot (bbl)	Comments
Event	1	Call Out	8/24/2017	19:00:00	USER					
Event	2	Pre-Convoy Safety Meeting	8/24/2017	20:38:56	USER					ALL HSE EMPLOYEES
Event	3	Arrive At Loc	8/25/2017	00:00:01	USER					RIG RUNNING CASING, STABBED HEAD AND CIRCULATED THROUGH IT. DURING PRIME UP ELITE 1 HAD A HYDRAULIC HOSE LEAK, CALLED FOR ELITE 1 THAT WAS ONLY 15 MINS DOWN THE ROAD. NO NPT
Event	4	Assessment Of Location Safety Meeting	8/25/2017	00:20:00	USER					ALL HSE EMPLOYEES
Event	5	Pre-Rig Up Safety Meeting	8/25/2017	00:30:00	USER					ALL HSE EMPLOYEES
Event	6	Pre-Job Safety Meeting	8/25/2017	01:00:00	USER					ALL ON LOCATION PERSONNEL
Event	7	Start Job	8/25/2017	01:18:38	COM5					9 5/8 32.3# H40 TP 1086, 1098, S.J.-36.8, HOLE-13.5, FULL RETURNS THROUGHOUT JOB. NO PIPE MOVEMENT
Event	8	Test Lines	8/25/2017	01:20:32	COM5	8.33	0.00	3240	1.4	TEST TO 3240 PSI
Event	9	Pump Spacer 1	8/25/2017	01:24:15	COM5	8.33	1.90	115	20	H2O SPACER
Event	10	Pump Lead Cement	8/25/2017	01:30:43	COM5	12.3	8	410	50.8	120 SKS, 12.3 PPG, 2.38 FT3/SK, 13.77 GAL/SK
Event	11	Pump Tail Cement	8/25/2017	01:37:48	COM5	12.8	8	425.00	65.7	175 SKS, 12.8 PPG, 2.11

FT3/SK, 11.78 GAL/SK										
Event	12	Shutdown	8/25/2017	01:46:31	USER	TO DROP TOP PLUG				
Event	13	Drop Top Plug	8/25/2017	01:49:41	COM5	PLUG AWAY				
Event	14	Pump Displacement	8/25/2017	01:50:00	COM5	8.4	10	640	82.7	FRESH WATER, 32 BBLS CMT TO SURFACE
Event	15	Slow Rate	8/25/2017	01:59:15	USER	8.30	2	398.00	72	TO BUMP PLUG
Event	16	Bump Plug	8/25/2017	02:04:17	COM5	8.30	2	260	82.7	PLUG BUMPED
Event	17	Check Floats	8/25/2017	02:07:22	USER	8.32	0.00	789.00	82.7	FLOATS HELD GOT 0.5 BBLS BACK
Event	18	End Job	8/25/2017	02:08:10	COM5					
Event	19	Pre-Rig Down Safety Meeting	8/25/2017	02:10:00	USER	ALL HSE EMPLOYEES				
Event	20	Rig-Down Equipment	8/25/2017	02:15:00	USER	ALL HSE EMPLOYEES				
Event	21	Pre-Convoy Safety Meeting	8/25/2017	03:20:00	USER	ALL HSE EMPLOYEES				
Event	22	Crew Leave Location	8/25/2017	03:30:00	USER	THANKS FOR USING GRAND JUNCTION CEMENT, JAMES LEIST AND CREW				

# TEP FEDERAL GM 41-10 9 5/8 SURFACE CASING



- |   |                          |                     |                               |                              |
|---|--------------------------|---------------------|-------------------------------|------------------------------|
| ① Call Out                              | ⑥ Pre-Job Safety Meeting | ⑪ Pump Tail Cement  | ⑮ Bump Plug                   | 21 Pre-Convoy Safety Meeting |
| ② Pre-Convoy Safety Meeting             | ⑦ Start Job              | ⑫ Shutdown          | ⑯ Check Floats                | 22 Crew Leave Location       |
| ③ Arrive At Loc                         | ⑧ Test Lines             | ⑬ Drop Top Plug     | ⑰ End Job                     |                              |
| ④ Assessment Of Location Safety Meeting | ⑨ Pump Spacer 1          | ⑭ Pump Displacement | ⑱ Pre-Rig Down Safety Meeting |                              |
| ⑤ Pre-Rig Up Safety Meeting             | ⑩ Pump Lead Cement       | ⑮ Slow Rate         | 20 Rig-Down Equipment         |                              |

▼ **HALLIBURTON** | iCem® Service

Created: 2017-08-24 20:32:22, Version: 4.2.393

Edit

Customer : TERRA ENERGY PARTNERS-EBUS

Job Date : 8/25/2017 1:03:16 AM

Well : Federal GM 41-10

Representative : W.C. WILSON

Sales Order # : 904254919

ELITE 4 : T. BROWN / J. LEIST

# TEP FEDERAL GM 41-10 9 5/8 SURFACE CASING

