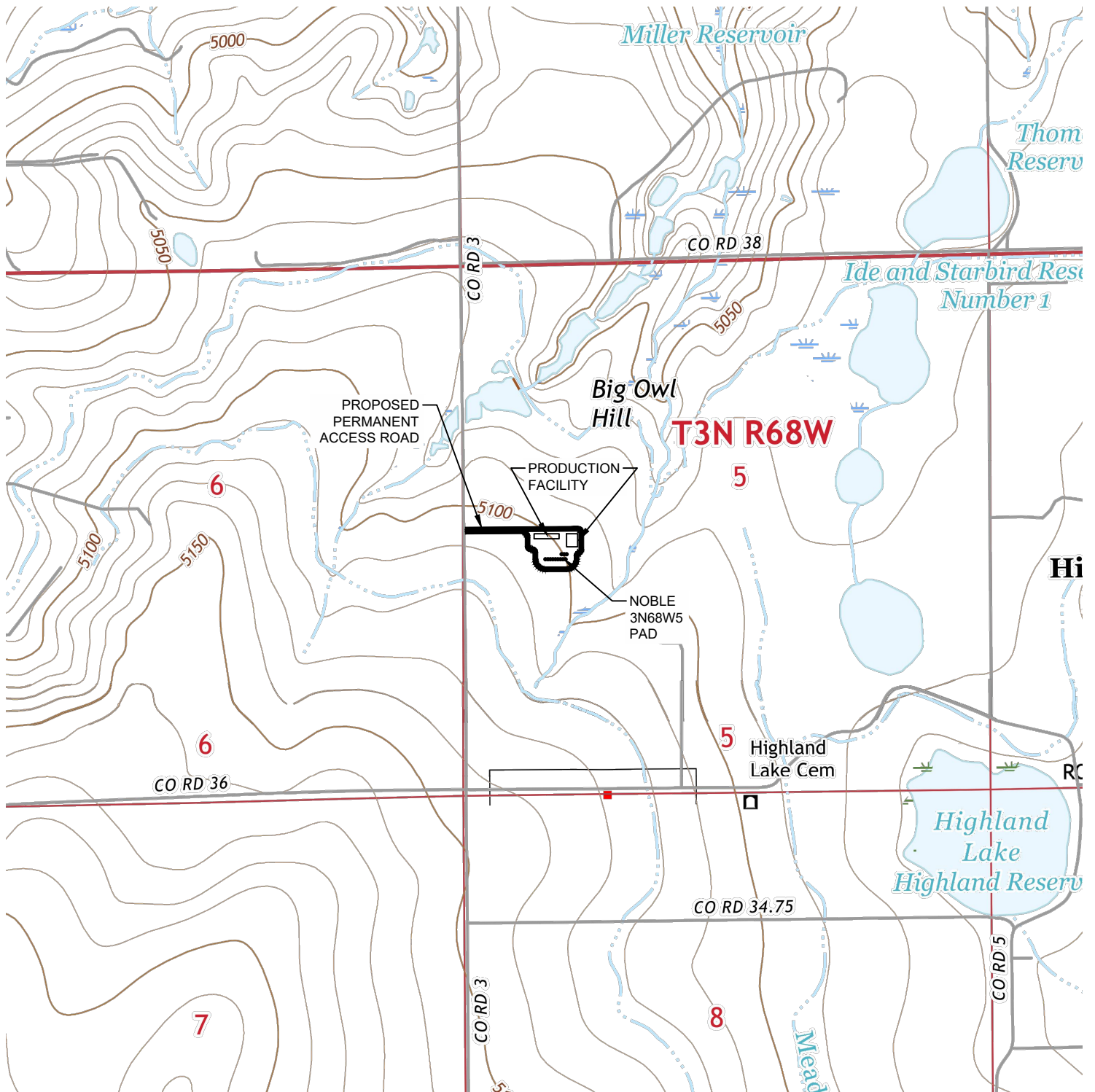


ACCESS ROAD MAP NOBLE 3N68W5 PAD

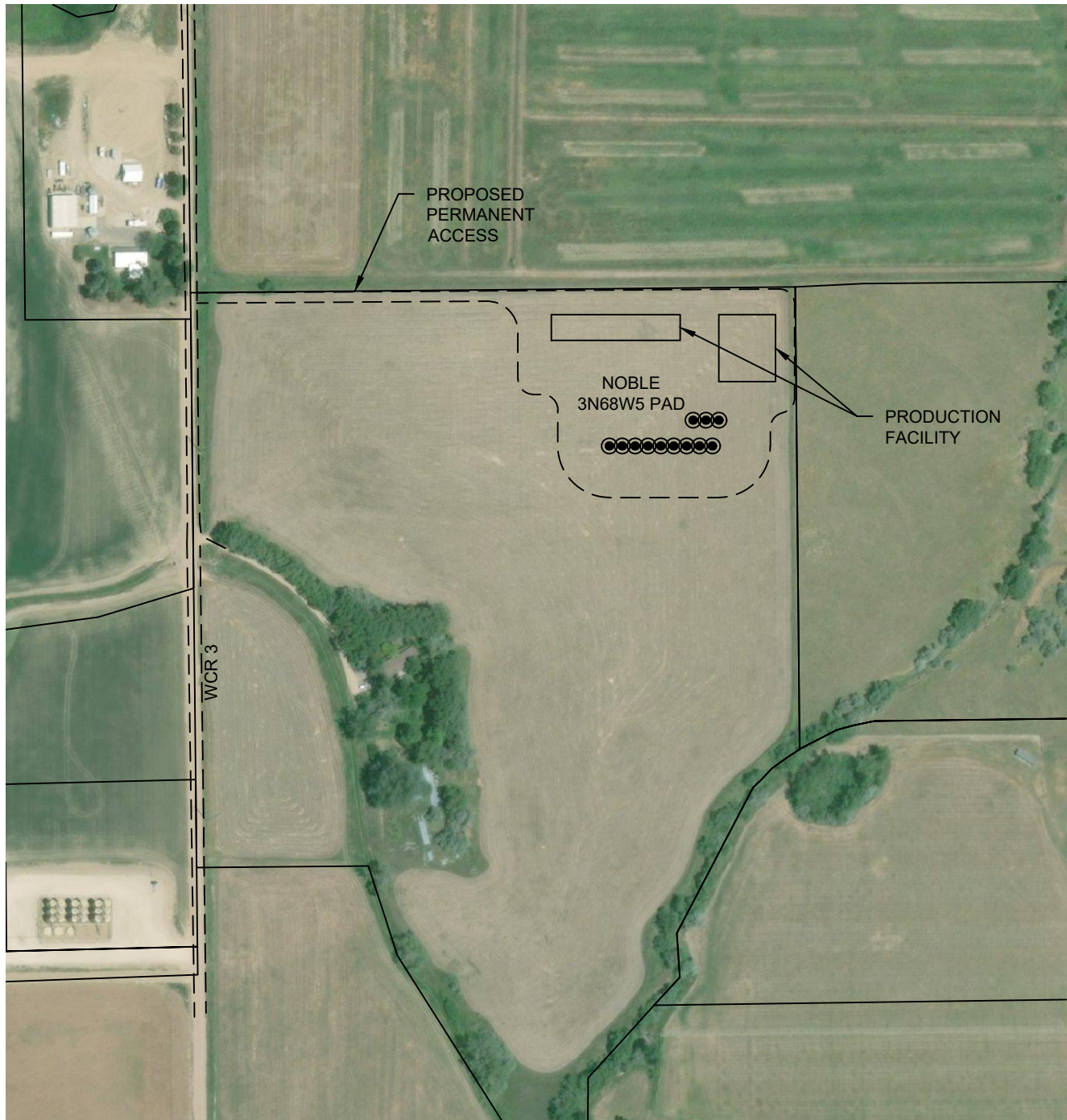
SECTION: 5
TOWNSHIP: 3N
RANGE: 68W
6TH P.M.
WELD COUNTY, CO



ACCESS ROAD MAP

NOBLE 3N68W5 PAD

SECTION: 5
TOWNSHIP: 3N
RANGE: 68W
6TH P.M.
WELD COUNTY, CO



DIRECTIONS:

FROM THE INTERSECTION OF WELD COUNTY ROAD 36 AND WELD COUNTY ROAD 3, THENCE NORTH ON WELD COUNTY ROAD 3 FOR 2,610' FEET TO AN ACCESS TO THE EAST, THENCE EAST FOR 620' TO PROPOSED PRODUCTION FACILITY OF THE WELL PAD.



Scale 1" = 400'

