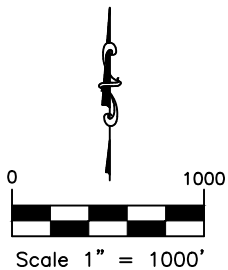
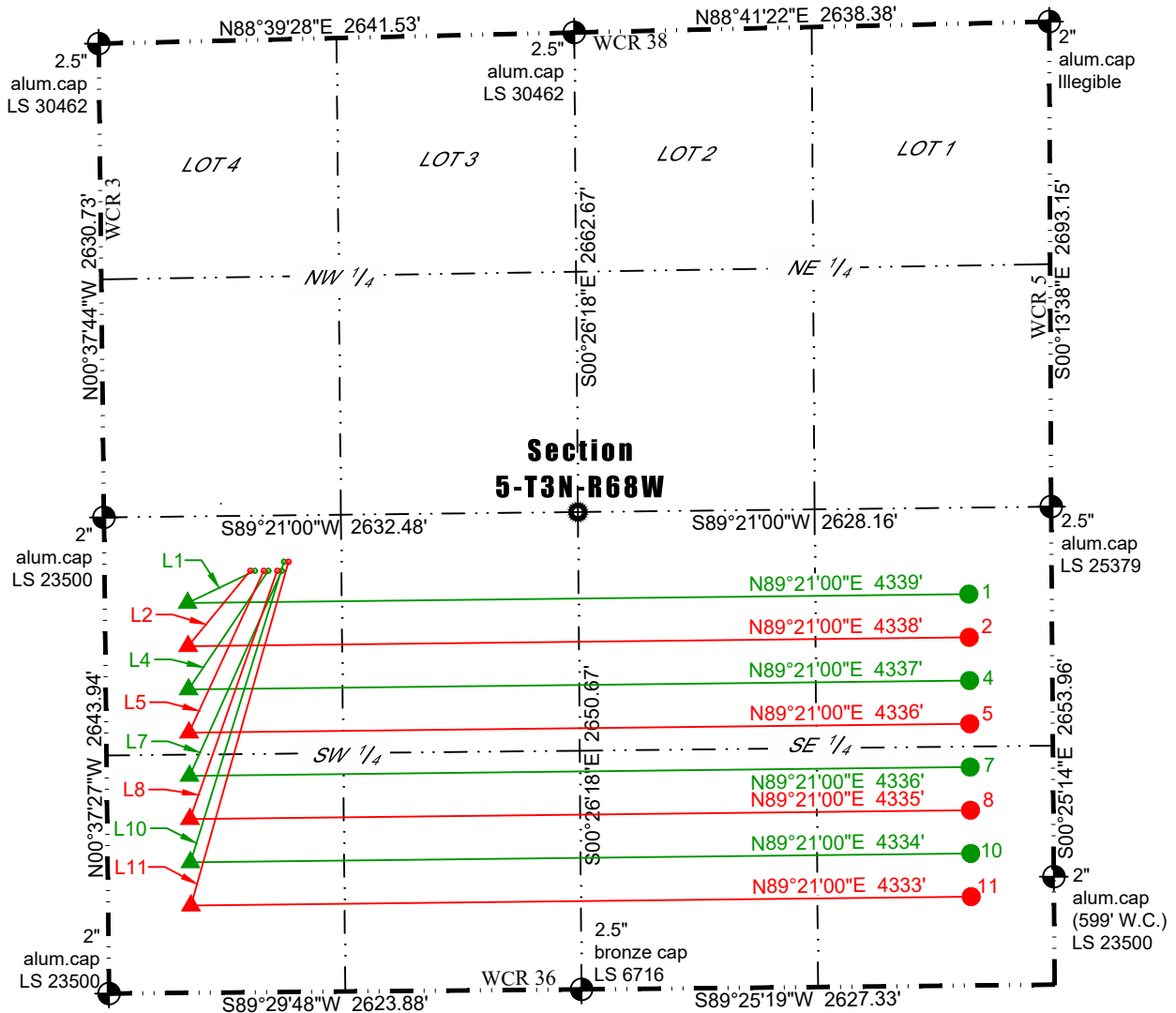




Washburn Land Surveying
www.WashburnSurveying.com
970-232-9645

MULTI-WELL PLAN NOBLE 3N68W5 PAD

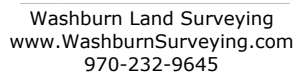
SECTION: 5
TOWNSHIP: 3N
RANGE: 68W
6TH P.M.
WELD COUNTY, CO



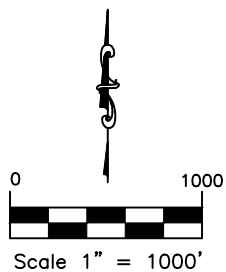
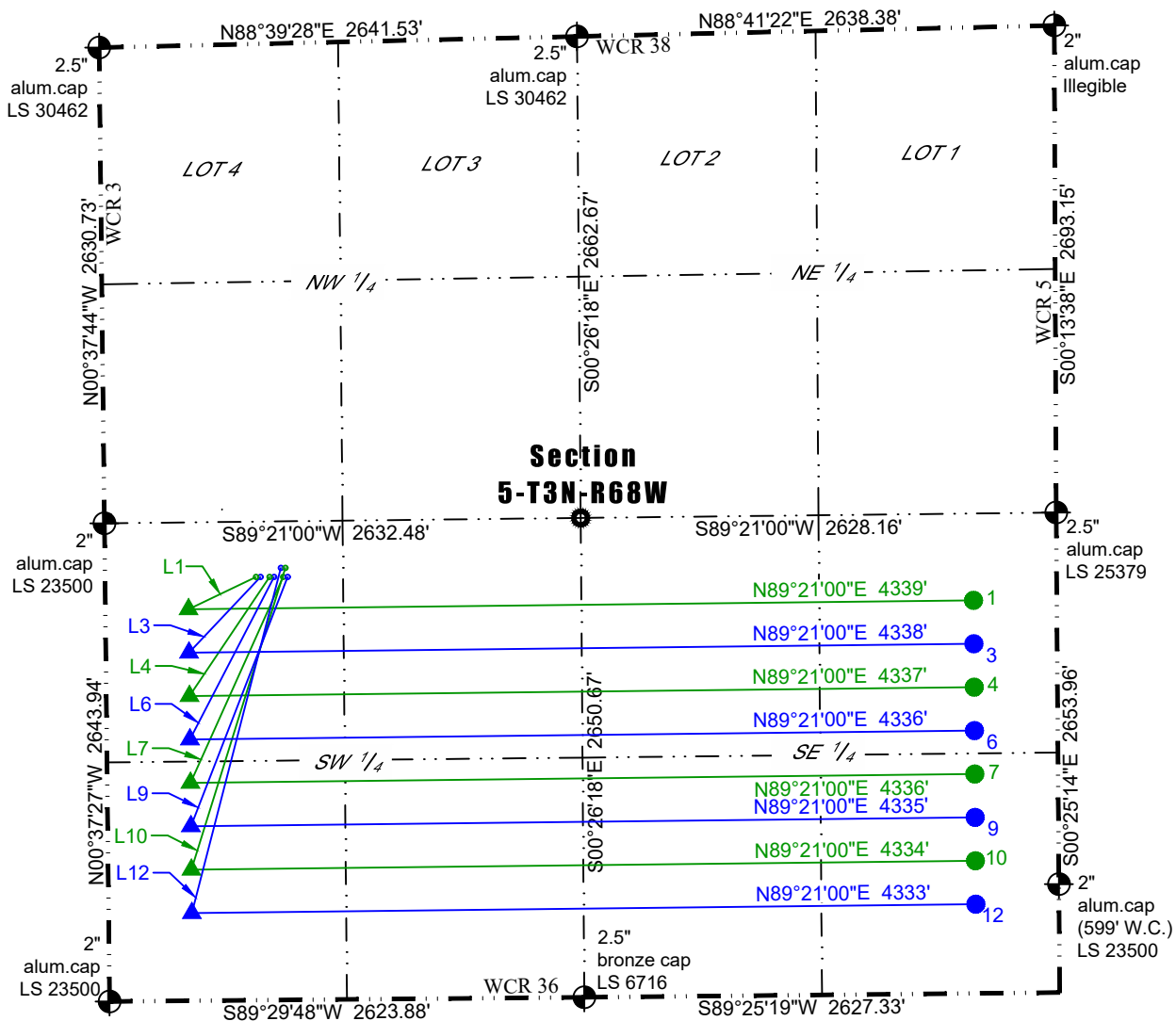
LEGEND:

- ALIQUOT CORNER AS DESCRIBED
- CALCULATED POSITION
- SURFACE HOLE LOCATION (SHL)
- LANDING POINT LOCATION (LPL)
- BOTTOM HOLE LOCATION (BHL)






| Parcel Line Table | | | Parcel Line Table | | |
|-------------------|--------|-------------|-------------------|--------|-------------|
| Line # | Length | Direction | Line # | Length | Direction |
| L1 | 413' | S64°30'34"W | L7 | 1248' | S24°14'30"W |
| L2 | 542' | S39°33'54"W | L8 | 1460' | S19°22'56"W |
| L3 | 575' | S43°24'32"W | L9 | 1478' | S21°12'40"W |
| L4 | 793' | S33°56'01"W | L10 | 1747' | S17°18'16"W |
| L5 | 989' | S24°48'21"W | L11 | 1983' | S15°51'33"W |
| L6 | 1011' | S27°22'45"W | L12 | 1970' | S14°27'37"W |



SECTION: 5
TOWNSHIP: 3N
RANGE: 68W
6TH P.M.
WELD COUNTY, CO



LEGEND:

- LEGEND:**
-  ALIQUOT CORNER AS DESCRIBED
 -  CALCULATED POSITION
 -  SURFACE HOLE LOCATION (SHL)
 -  LANDING POINT LOCATION (LPL)
 -  BOTTOM HOLE LOCATION (BHL)

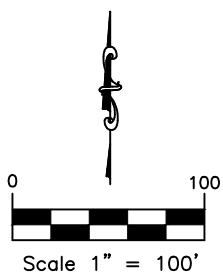
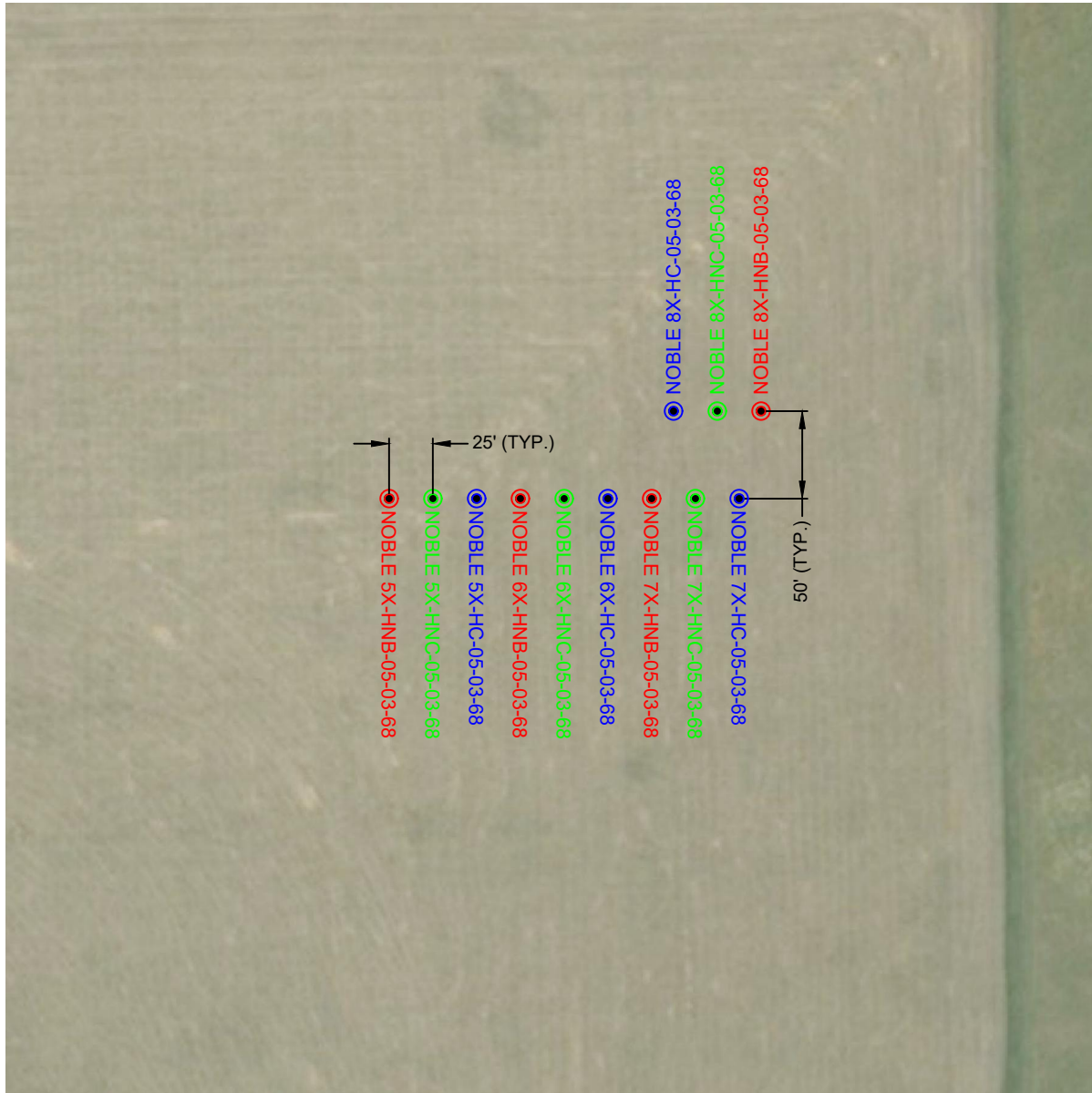
| Parcel Line Table | | | Parcel Line Table | | |
|-------------------|--------|-------------|-------------------|--------|-------------|
| Line # | Length | Direction | Line # | Length | Direction |
| L1 | 413' | S64°30'34"W | L7 | 1248' | S24°14'30"W |
| L2 | 542' | S39°33'54"W | L8 | 1460' | S19°22'56"W |
| L3 | 575' | S43°24'32"W | L9 | 1478' | S21°12'40"W |
| L4 | 793' | S33°56'01"W | L10 | 1747' | S17°18'16"W |
| L5 | 989' | S24°48'21"W | L11 | 1983' | S15°51'33"W |
| L6 | 1011' | S27°22'45"W | L12 | 1970' | S14°27'37"W |



Washburn Land Surveying
www.WashburnSurveying.com
970-232-9645

MULTI-WELL PLAN NOBLE 3N68W5 PAD

SECTION: 5
TOWNSHIP: 3N
RANGE: 68W
6TH P.M.
WELD COUNTY, CO





Washburn Land Surveying
www.WashburnSurveying.com
970-232-9645

MULTI-WELL PLAN NOBLE 3N68W5 PAD

SECTION: 5
TOWNSHIP: 3N
RANGE: 68W
6TH P.M.
WELD COUNTY, CO

| ID | WELL | SHL LAT | SHL LONG | SHL FOOTAGES | | | | |
|----|---------------------------|-----------|-------------|--------------|-----|------|-----|--------------|
| 1 | NOBLE 5X-HNC-05-03-68 SHL | 40.254007 | -105.033557 | 2340 | FLS | 835 | FWL | OF SECTION 5 |
| 2 | NOBLE 5X-HNB-05-03-68 SHL | 40.254008 | -105.033646 | 2340 | FLS | 810 | FWL | OF SECTION 5 |
| 3 | NOBLE 5X-HC-05-03-68 SHL | 40.254007 | -105.033467 | 2339 | FLS | 860 | FWL | OF SECTION 5 |
| 4 | NOBLE 6X-HNC-05-03-68 SHL | 40.254006 | -105.033288 | 2339 | FLS | 910 | FWL | OF SECTION 5 |
| 5 | NOBLE 6X-HNB-05-03-68 SHL | 40.254006 | -105.033378 | 2339 | FLS | 885 | FWL | OF SECTION 5 |
| 6 | NOBLE 6X-HC-05-03-68 SHL | 40.254006 | -105.033199 | 2339 | FLS | 935 | FWL | OF SECTION 5 |
| 7 | NOBLE 7X-HNC-05-03-68 SHL | 40.254005 | -105.033019 | 2338 | FLS | 985 | FWL | OF SECTION 5 |
| 8 | NOBLE 7X-HNB-05-03-68 SHL | 40.254005 | -105.033109 | 2338 | FLS | 960 | FWL | OF SECTION 5 |
| 9 | NOBLE 7X-HC-05-03-68 SHL | 40.254005 | -105.032930 | 2338 | FLS | 1010 | FWL | OF SECTION 5 |
| 10 | NOBLE 8X-HNC-05-03-68 SHL | 40.254142 | -105.032974 | 2388 | FLS | 998 | FWL | OF SECTION 5 |
| 11 | NOBLE 8X-HNB-05-03-68 SHL | 40.254142 | -105.032884 | 2388 | FLS | 1023 | FWL | OF SECTION 5 |
| 12 | NOBLE 8X-HC-05-03-68 SHL | 40.254142 | -105.033063 | 2388 | FLS | 973 | FWL | OF SECTION 5 |
| | | | | | | | | |
| ID | WELL | LPL LAT | LPL LONG | LPL FOOTAGES | | | | |
| 1 | NOBLE 5X-HNC-05-03-68 LP | 40.253525 | -105.034896 | 2165 | FSL | 460 | FWL | OF SECTION 5 |
| 2 | NOBLE 5X-HNB-05-03-68 LP | 40.252866 | -105.034891 | 1925 | FSL | 460 | FWL | OF SECTION 5 |
| 3 | NOBLE 5X-HC-05-03-68 LP | 40.252866 | -105.034891 | 1925 | FSL | 460 | FWL | OF SECTION 5 |
| 4 | NOBLE 6X-HNC-05-03-68 LP | 40.252207 | -105.034886 | 1685 | FSL | 460 | FWL | OF SECTION 5 |
| 5 | NOBLE 6X-HNB-05-03-68 LP | 40.251548 | -105.034881 | 1445 | FSL | 460 | FWL | OF SECTION 5 |
| 6 | NOBLE 6X-HC-05-03-68 LP | 40.251548 | -105.034881 | 1445 | FSL | 460 | FWL | OF SECTION 5 |
| 7 | NOBLE 7X-HNC-05-03-68 LP | 40.250889 | -105.034876 | 1205 | FSL | 460 | FWL | OF SECTION 5 |
| 8 | NOBLE 7X-HNB-05-03-68 LP | 40.250231 | -105.034871 | 965 | FSL | 460 | FWL | OF SECTION 5 |
| 9 | NOBLE 7X-HC-05-03-68 LP | 40.250231 | -105.034871 | 965 | FSL | 460 | FWL | OF SECTION 5 |
| 10 | NOBLE 8X-HNC-05-03-68 LP | 40.249572 | -105.034866 | 725 | FSL | 460 | FWL | OF SECTION 5 |
| 11 | NOBLE 8X-HNB-05-03-68 LP | 40.248913 | -105.034862 | 485 | FSL | 460 | FWL | OF SECTION 5 |
| 12 | NOBLE 8X-HC-05-03-68 LP | 40.248913 | -105.034862 | 485 | FSL | 460 | FWL | OF SECTION 5 |
| | | | | | | | | |
| ID | WELL | BHL LAT | BHL LONG | BHL FOOTAGES | | | | |
| 1 | NOBLE 5X-HNC-05-03-68 BHL | 40.253596 | -105.019350 | 2173 | FSL | 460 | FEL | OF SECTION 5 |
| 2 | NOBLE 5X-HNB-05-03-68 BHL | 40.252938 | -105.019349 | 1933 | FSL | 460 | FEL | OF SECTION 5 |
| 3 | NOBLE 5X-HC-05-03-68 BHL | 40.252938 | -105.019349 | 1933 | FSL | 460 | FEL | OF SECTION 5 |
| 4 | NOBLE 6X-HNC-05-03-68 BHL | 40.252279 | -105.019347 | 1693 | FSL | 460 | FEL | OF SECTION 5 |
| 5 | NOBLE 6X-HNB-05-03-68 BHL | 40.251620 | -105.019345 | 1453 | FSL | 460 | FEL | OF SECTION 5 |
| 6 | NOBLE 6X-HC-05-03-68 BHL | 40.251620 | -105.019345 | 1453 | FSL | 460 | FEL | OF SECTION 5 |
| 7 | NOBLE 7X-HNC-05-03-68 BHL | 40.250961 | -105.019344 | 1213 | FSL | 460 | FEL | OF SECTION 5 |
| 8 | NOBLE 7X-HNB-05-03-68 BHL | 40.250302 | -105.019342 | 973 | FSL | 460 | FEL | OF SECTION 5 |
| 9 | NOBLE 7X-HC-05-03-68 BHL | 40.250302 | -105.019342 | 973 | FSL | 460 | FEL | OF SECTION 5 |
| 10 | NOBLE 8X-HNC-05-03-68 BHL | 40.249643 | -105.019340 | 733 | FSL | 460 | FEL | OF SECTION 5 |
| 11 | NOBLE 8X-HNB-05-03-68 BHL | 40.248985 | -105.019339 | 493 | FSL | 460 | FEL | OF SECTION 5 |
| 12 | NOBLE 8X-HC-05-03-68 BHL | 40.248985 | -105.019339 | 493 | FSL | 460 | FEL | OF SECTION 5 |