



**LEGEND**

- ◆ ~ FOUND ORIGINAL STONE
- ⊙ ~ FOUND GLO BRASS CAP ON STEEL POST
- ⊕ ~ FOUND MONUMENT SET BY OTHERS AS NOTED
- ~ SET MONUMENT AS NOTED
- ~ WELL HEAD
- (M) ~ MEASURED IN FIELD
- L ~ 90° SYMBOL
- WC ~ WITNESS CORNER

**BASIS OF BEARING:**

THE LINE FROM THE N 1/4 CORNER TO THE NE CORNER OF SECTION 19, TOWNSHIP 11 SOUTH, RANGE 89 WEST, 6TH P.M., WAS ASSUMED TO BEAR N. 89°05'46" E. AS MONUMENTED AND SHOWN HEREON.

**CERTIFICATE OF SURVEY:**

I, David G. Nicewicz, a Registered Land Surveyor in the State of Colorado, do hereby certify that the survey represented by this plat was made under my direction and supervision, and that this plat accurately represents this survey.

David G. Nicewicz P.L.S. No. 24963  
(for and on behalf of AECOM)



**GAS WELL LOCATION PLAT**

HL 11-89-19 #2

SURFACE LOCATION

Located in the NW 1/4 Section 19, T. 11 S., R. 89 W.,  
6th P.M., Gunnison County, Colorado

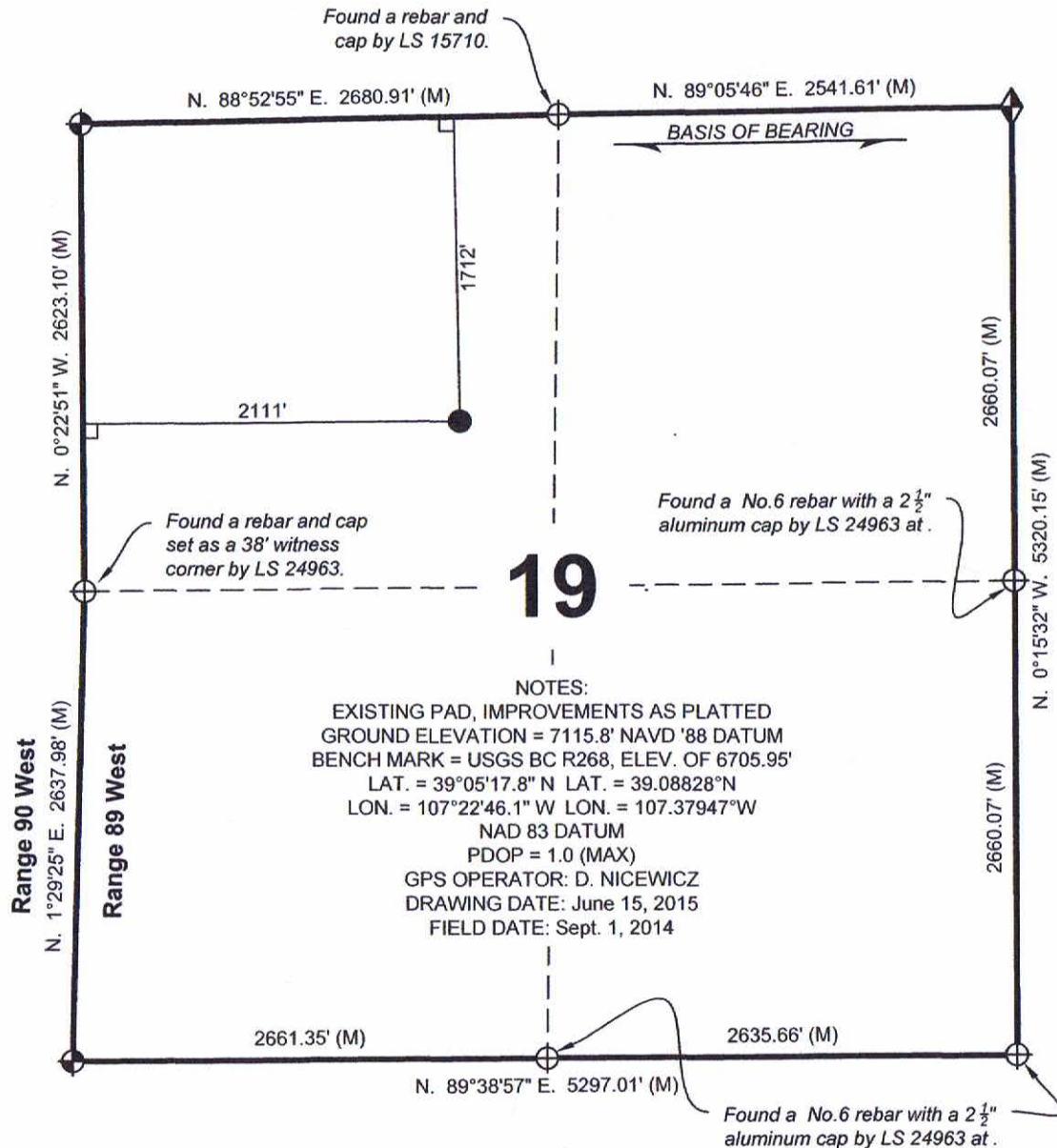
SURVEYED BY:  
DGN  
DWG DATE:  
06/15/2015  
DRAFTED BY:  
MLD  
SCALE:  
1" = 1000'

**David G. Nicewicz, PLS**

cell: (720) 456-1104  
david.nicewicz@aecom.com  
AECOM  
804 Colorado Ave, Suite 201  
Glenwood Springs Co 81610

JOB NO.: 22243490.12000

SHEET NO. 1 of 1



AECOM OF GLENWOOD SPRINGS COLORADO, has in accordance with a request from ERIC SANFORD, for SG INTERESTS I, LTD, determined the location of **HL 11-89-19 #2 SURFACE LOCATION** to be **1712 FNL & 2111 FWL** Section 19, Township 11 South, Range 89 West, of the Sixth Principal Meridian, Gunnison County, Colorado.





**LEGEND**

- ◆ ~ FOUND ORIGINAL STONE
- ⊙ ~ FOUND GLO BRASS CAP ON STEEL POST
- ⊕ ~ FOUND REBAR AND CAP BY LS15710
- ~ FOUND No.6 REBAR WITH A 2 1/2" ALUMINUM CAP, LS24963
- ~ WELL HEAD
- (M) ~ MEASURED IN FIELD
- L ~ 90° SYMBOL
- WC ~ WITNESS CORNER

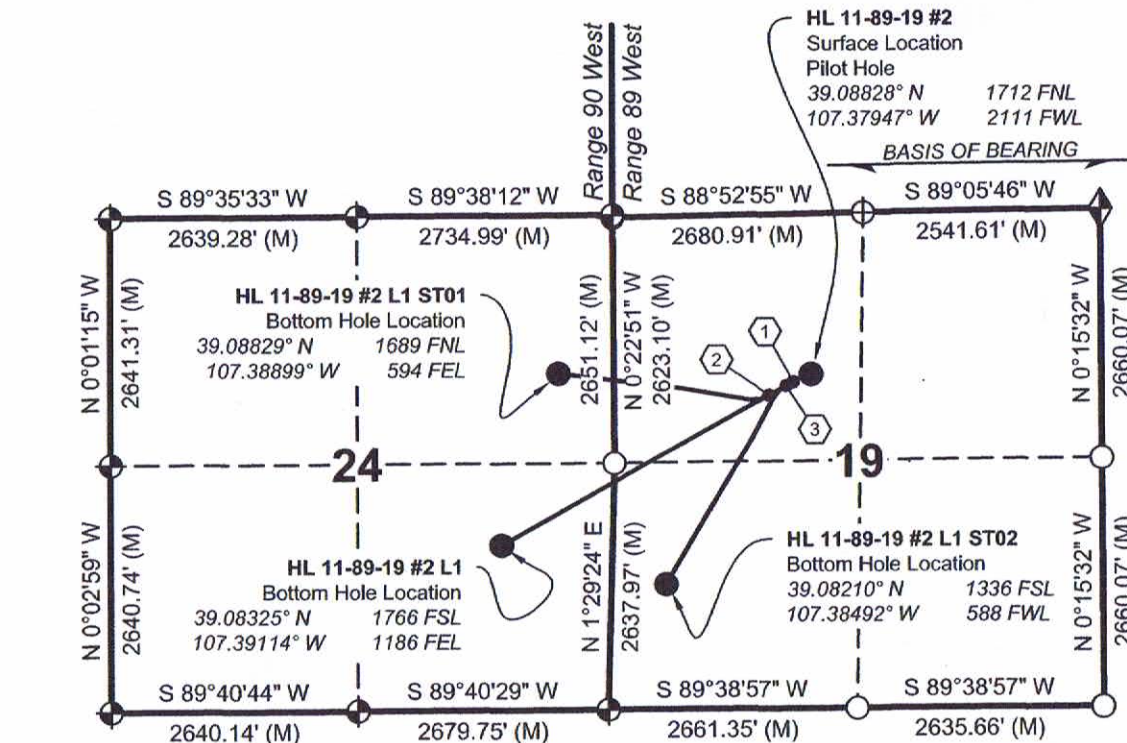
**BASIS OF BEARING:**

THE LINE FROM THE N 1/4 CORNER TO THE NE CORNER OF SECTION 19, TOWNSHIP 11 SOUTH, RANGE 89 WEST, 6TH P.M., WAS ASSUMED TO BEAR N. 89°05'46" E. AS MONUMENTED AND SHOWN HEREON.

**CERTIFICATE OF SURVEY:**

I, David G. Nicewicz, a Registered Land Surveyor in the State of Colorado, do hereby certify that the survey represented by this plat was made under my direction and supervision, and that this plat accurately represents this survey.

David G. Nicewicz P.L.S. No. 24963  
(for and on behalf of AECOM)



① **HL 11-89-19 #2 L1:**  
Estimated Top of Production  
39.08804° N 1790 FNL  
107.38014° W 1919 FWL

② **HL 11-89-19 #2 L1 ST01:**  
Estimated Top of Production  
39.08765° N 1930 FNL  
107.38105° W 1658 FWL

③ **HL 11-89-19 #2 L1 ST02:**  
Estimated Top of Production  
39.08793° N 1831 FNL  
107.38041° W 1842 FWL

AECOM OF GLENWOOD SPRINGS COLORADO, has in accordance with a request from ERIC SANFORD, for SG INTERESTS I, LTD, determined the HL 11-89-19 #2 L1 BOTTOM HOLE LOCATION to be 1766 FSL & 1186 FEL and the HL 11-89-19 #2 L1 ST01 BOTTOM HOLE LOCATION to be 1689 FNL & 594 FEL Section 24, Township 11 South, Range 90 West, and the HL 11-89-19 #2 L1 ST02 BOTTOM HOLE LOCATION to be 1336 FSL & 588 FWL Section 19, Township 11 South, Range 89 West all in the Sixth Principal Meridian, Gunnison County, Colorado.

# GAS WELL LOCATION

HL 11-89-19 #2 L1, L1 ST01 & L1 ST02 Bottom Hole Locations  
Located in Section 24, T. 11 S., R. 90 W. &  
Section 19, T. 11 S., R. 89 W., Sixth P.M.,  
Gunnison County, Colorado

SURVEYED BY: DGN	DWG DATE: 11/06/17	AECOM David G. Nicewicz, PLS 804 Colorado Ave, Suite 201 Glenwood Springs Co 81610 cell: (720) 456-1104 email: david.nicewicz@aecom.com
DRAFTED BY: MLD	SCALE: 1" = 2000'	
JOB NO.:	SHEET NO. 1 of 1	