

T8N, R59W, 6th P.M.

BISON OIL & GAS II

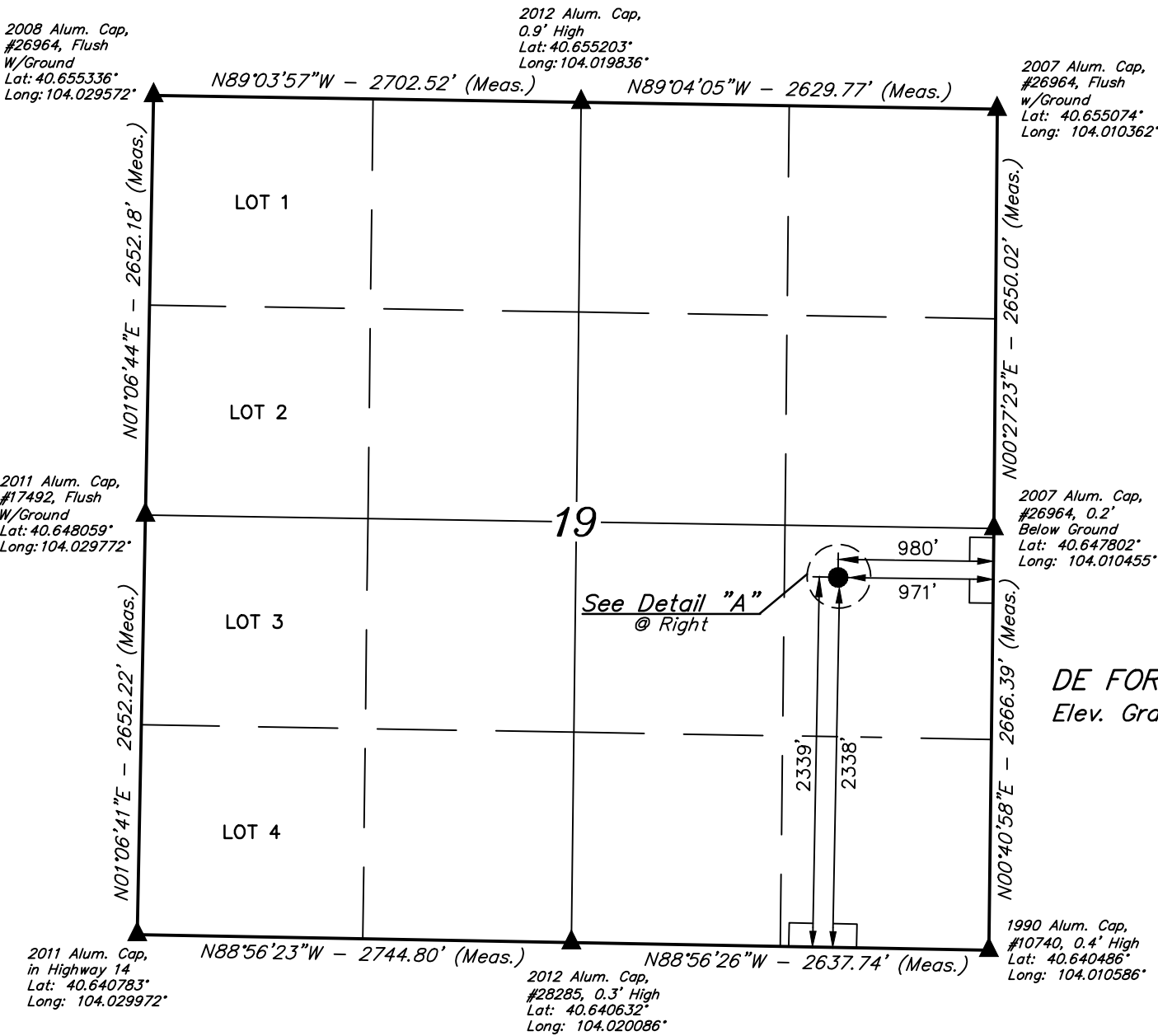
DE FORD #1 INTERCEPT
NE 1/4 SE 1/4, SECTION 19, T8N, R59W, 6th P.M.
WELD COUNTY, COLORADO

BASIS OF BEARINGS

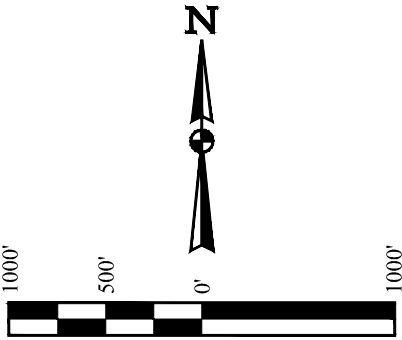
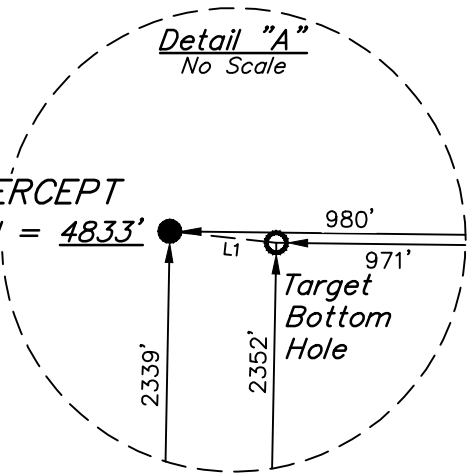
BASIS OF BEARINGS IS A G.P.S. OBSERVATION

BASIS OF ELEVATION

SPOT ELEVATION LOCATED AT THE NORTHEAST CORNER OF SECTION 2, T9N, R61W, 6th P.M., TAKEN FROM THE GROVER SOUTH, QUADRANGLE, COLORADO, WELD COUNTY, 7.5 MINUTE QUAD (TOPOGRAPHICAL MAP) PUBLISHED BY THE UNITED STATES DEPARTMENT OF THE INTERIOR, GEOLOGICAL SURVEY. SAID ELEVATION IS MARKED AS BEING 5043 FEET.



DE FORD #1 INTERCEPT
Elev. Graded Ground = 4833'



LINE TABLE		
LINE	DIRECTION	LENGTH
L1	S83°51'13"E	9.31'

PDOP = 1.2

SURFACE LOCATION 2339' FSL 980' FEL	TARGET BOTTOM HOLE 2338' FSL 971' FEL
NAD 83 (SURFACE LOCATION)	NAD 83 (TARGET BOTTOM HOLE)
LATITUDE = 40°38'49.05" (40.646958)	LATITUDE = 40°38'49.04" (40.646956)
LONGITUDE = 104°00'50.41" (104.014002)	LONGITUDE = 104°00'50.29" (104.013969)
NAD 27 (SURFACE LOCATION)	NAD 27 (TARGET BOTTOM HOLE)
LATITUDE = 40°38'49.10" (40.646971)	LATITUDE = 40°38'49.09" (40.646968)
LONGITUDE = 104°00'48.59" (104.013498)	LONGITUDE = 104°00'48.47" (104.013464)
STATE PLANE NAD 83 (CO. NORTH)	STATE PLANE NAD 83 (CO. NORTH)
N: 1481984.28 E: 3412338.63	N: 1481983.43 E: 3412347.90
STATE PLANE NAD 27 (CO. NORTH)	STATE PLANE NAD 27 (CO. NORTH)
N: 481982.84 E: 2412489.68	N: 481981.98 E: 2412498.95

CERTIFICATE

THIS IS TO CERTIFY THAT THE ABOVE PLAT WAS PREPARED FROM FIELD NOTES OF ACTUAL SURVEYS MADE BY ME OR UNDER MY SUPERVISION, AND THAT THE SAME ARE TRUE AND CORRECT TO THE BEST OF MY KNOWLEDGE AND BELIEF.

REGISTERED LAND SURVEYOR
REGISTRATION NO. 28285
STATE OF COLORADO



- LEGEND:
- 90° SYMBOL
 - PROPOSED WELLHEAD.
 - TARGET BOTTOM HOLE.
 - SECTION CORNERS LOCATED. (NAD 83)



UELS, LLC
Corporate Office * 85 South 200 East
Vernal, UT 84078 * (435) 789-1017

SURVEYED BY	CHAD MEIERS	11-27-17	SCALE
DRAWN BY	D.COX	11-27-17	1" = 1000'

WELL LOCATION PLAT