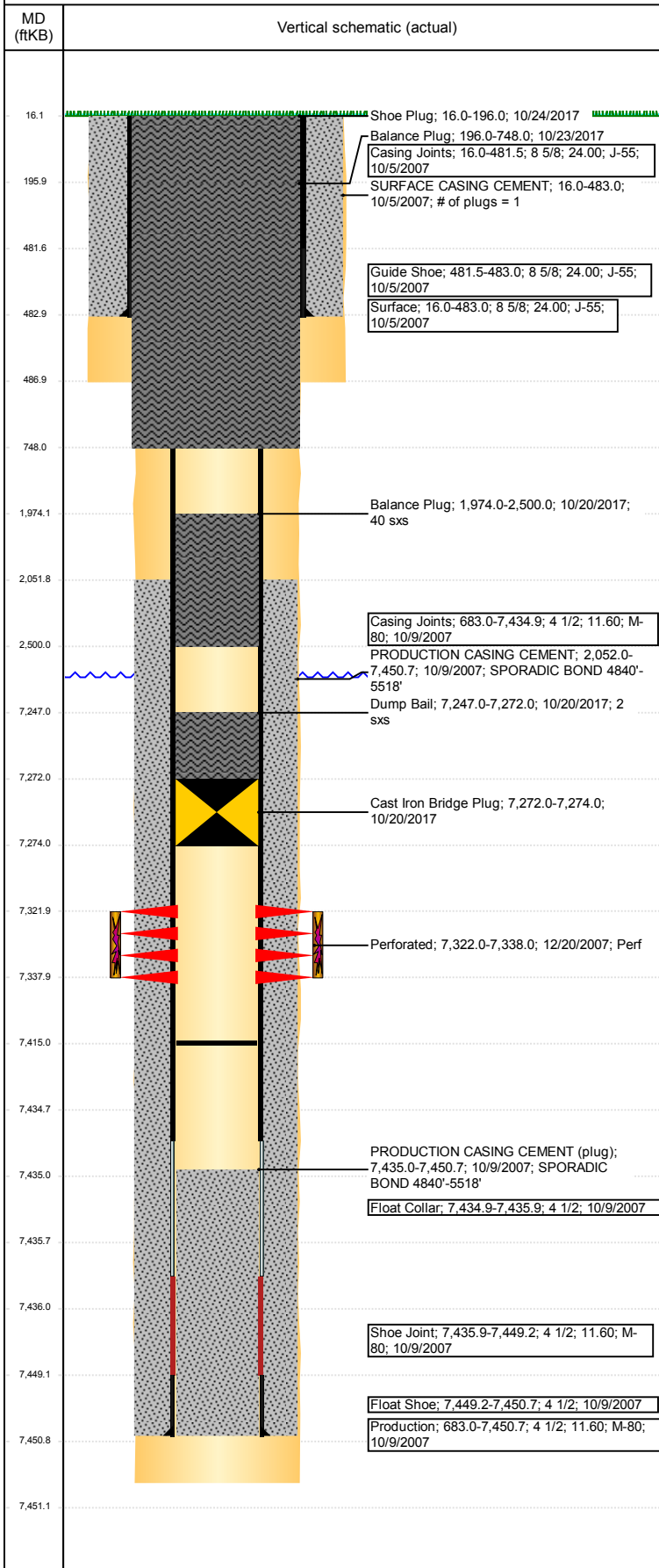


Well Name: CERVI USX CC15-09

VERTICAL - ORIGINAL HOLE, 11/25/2017 11:10:05 AM



Well Header

API 05-123-26005	Business Unit DJ BASIN	District 15	Well Config VERTICAL
Original KB Elevation (ft) 4,688	KB - GL / MSL (ftKB) 16.00	Spud Date 10/4/2007	P & A Date 10/24/2017

Comment

WELL WAS DRILLED/FRACT'D IN '07-'08 THEN SI - WAITED ON PIPELINE UNTIL 2011.

Directions To Well

FROM WCR 69 & HWY 34, NORTHWEST 1/2 MILE, SOUTH 1.5 MILES, WEST 3/8 MILE, SOUTH 1.25 MILES, EAST 1 MILE, NORTH 1.25 MILES, WEST 1/8 MILE TO LOCATION.

Congressional Location

Quarter 3 NE	Quarter 4 SE	Section 15	Township 4	Twnshp N/S Dir N	Range 63	Range E/W Dir W
-----------------	-----------------	---------------	---------------	---------------------	-------------	--------------------

Bottom Hole Location

North-South Distance (ft)	From N or S Line	East-West Distance (ft)	From E or W Line
---------------------------	------------------	-------------------------	------------------

Plug Back Total Depths

Date	Depth (ftKB)	Method	Com
10/9/2007	7,435.0	CASING TALLY	FLOAT COLLAR
10/26/2007	7,399.0	CASED HOLE LOG	DEPTH LOGGER ON CBL
12/19/2007	7,415.0	TAG	TAGGED FILL

Wellbore Sections

Section Des	Size (in)	Act Top, MD (ftKB)	Act Btm, MD (ftKB)
SURFACE	12 1/4	16	487
PRODUCTION	7 7/8	487	7,451

Zone Statuses

Zone Name	Status Date	Status	Fluid Type	Job	Prod Method
DAKOTA	1/14/2008	SI	Water	DRILLING/CO...	Flowing
DAKOTA	1/13/2011	PR		DRILLING/CO...	
DAKOTA	1/17/2011	PR			
DAKOTA	5/9/2017	SI			
DAKOTA	10/20/2017	P&A		PLUG AND AB...	

Casing Strings

Surface, 483.0ftKB

Casing Description	Run Date	OD (in)	Wt/Len (l...)	Grade	Top, MD (ft...)	MD (ftKB)
Surface	10/5/2007	8 5/8	24.00	J-55	16.0	483.0

Production, 7,450.7ftKB

Casing Description	Run Date	OD (in)	Wt/Len (l...)	Grade	Top, MD (ft...)	MD (ftKB)
Production	10/9/2007	4 1/2	11.60	M-80	16.0	7,450.7

Cement

Description	Top Depth (ftKB)	Bottom Depth (ftKB)
SURFACE CASING CEMENT	16.0	483.0
PRODUCTION CASING CEMENT	2,052.0	7,450.7
Dump Bail	7,247.0	7,272.0
Balance Plug	1,974.0	2,500.0
Balance Plug	196.0	748.0
Shoe Plug	16.0	196.0

Tubing Strings

Tubing Description	Run Date	String...	ID (in)	Wt (lb/ft)	Grade	Len (ft)	Set De...
Tubing - Production	12/20/2007	2 3/8	2.00	4.70	J-55	7,289.00	

Tubing Components

Item Des	OD (in)	Wt (lb/ft)	Grade	Jts	Len (ft)	Btm (ftKB)	Btm (TVD) (ftKB)
Tubing	2 3/8	4.70	J-55	237	7,287.50	7,300.5	
Pump Seating	2 3/8				1.00	7,301.5	
Nipple							
Notched collar	2 3/8				0.50	7,302.0	

Other In Hole

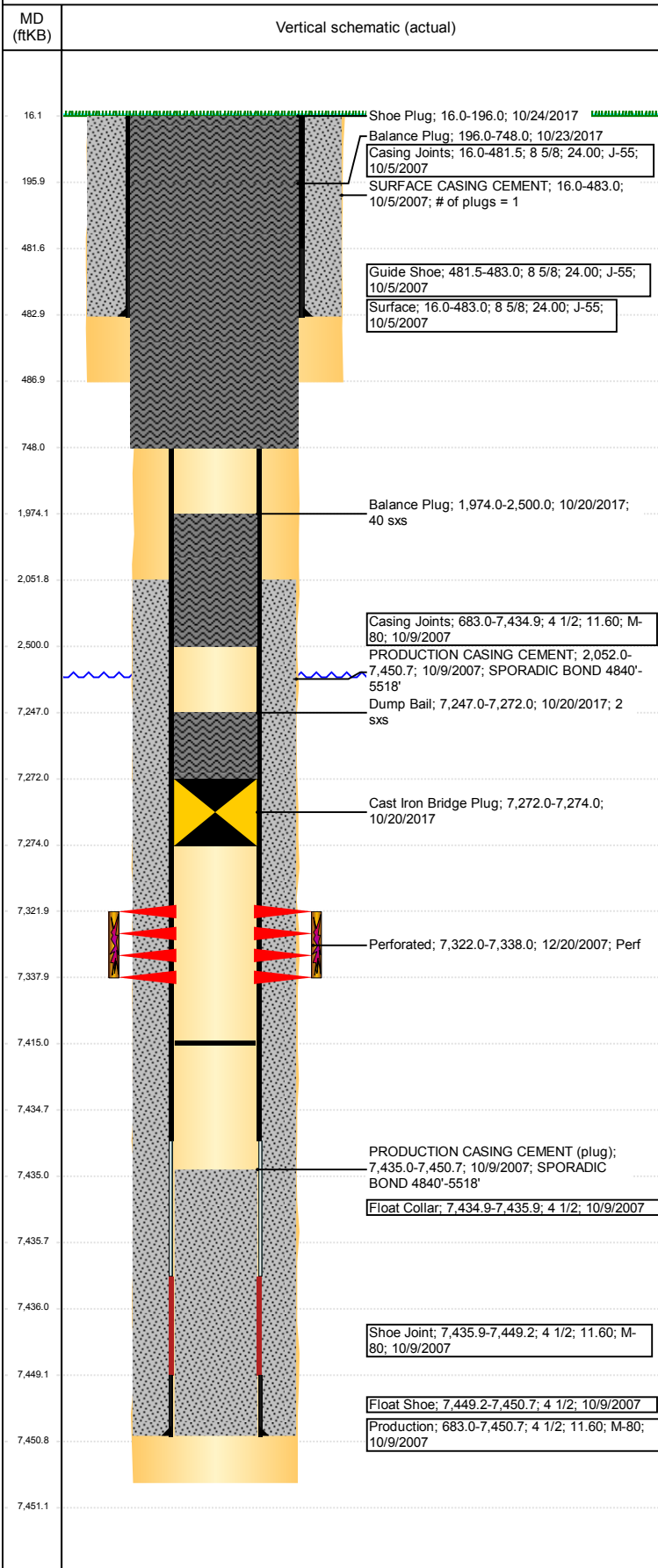
Run Date	Des	OD (in)	Top (ftKB)	Btm (ftKB)
10/20/2017	Cast Iron Bridge Plug	3.99	7,272.0	7,274.0

Logs

Date	Type	Top, MD (ftKB)	Btm, MD (ftKB)
10/8/2007	Compensated Density	2,450.0	7,446.0

Well Name: CERVI USX CC15-09

VERTICAL - ORIGINAL HOLE, 11/25/2017 11:10:05 AM



Logs			
Date	Type	Top, MD (ftKB)	Btm, MD (ftKB)
10/8/2007	Induction	487.0	7,446.0
10/26/2007	Cement Bond	1,880.0	7,394.0
10/19/2017	GYRO	16.0	7,300.0

Perforation Data					
Linked Zone	Bnch/St g	Sum of Entered Shot Total	Top (ftKB)	Btm (ftKB)	Date
DAKOTA, ORIGINAL HOLE		64	7,322.00	7,338.00	12/20/2007
Total (Sum)		64			

Stimulation Intervals		
Start Date	Primary Job Type	
1/14/2008	DRILLING/COMPLETION - ORIGINAL	
Technical Result	Tech Result Details	Tech Result Note
Success	According to Plan	
Comment		
DAKOTA FRAC WENT WELL. NO ISSUES WITH EQUIPMENT OR FLUID. AVG NOLTE = +0.19.		