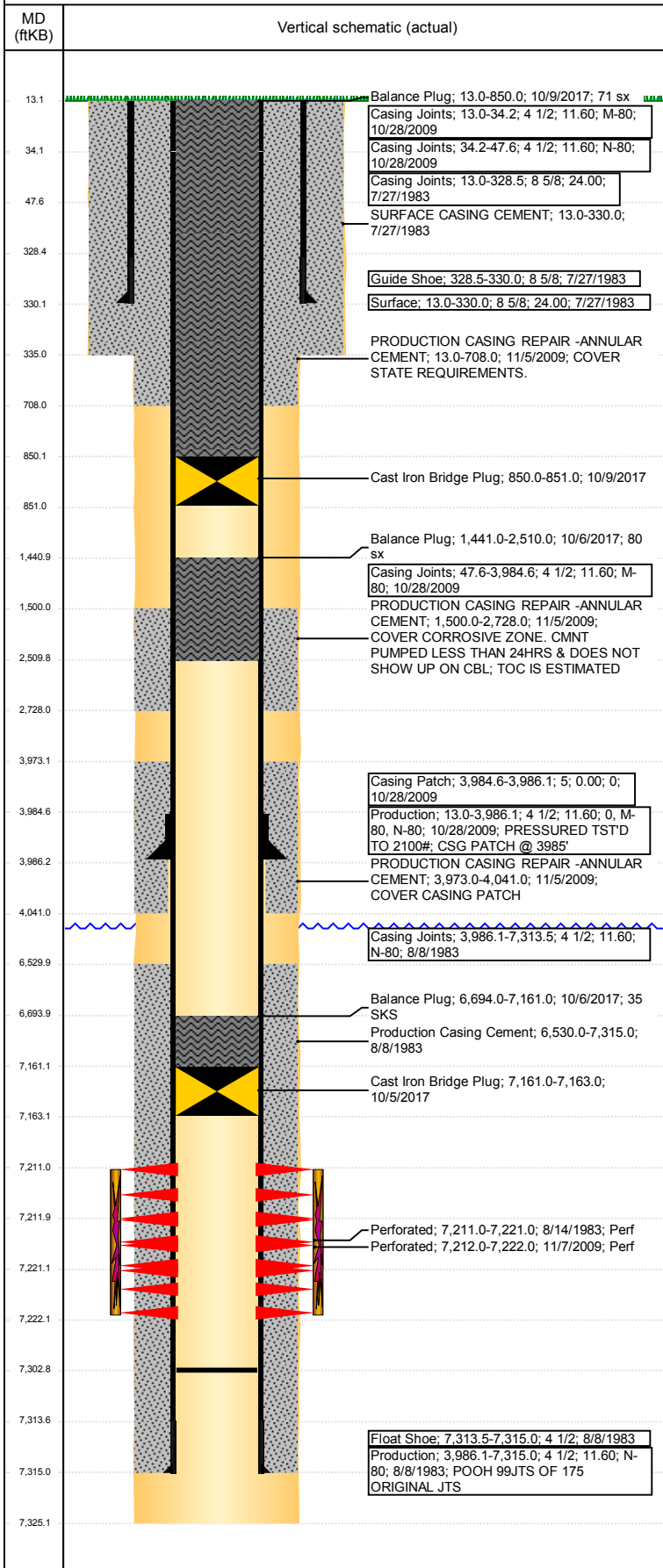


Wellbore Schematic Input Report

Well Name: **BERG 01**

VERTICAL - ORIGINAL HOLE, 11/25/2017 11:04:44 AM



Well Header

API	Business Unit	District	Well Config
05-123-11280	DJ BASIN	15	VERTICAL
Original KB Elevation (ft)	KB - GL / MSL (ftKB)	Spud Date	P & A Date
4,790	13.00	7/26/1983	10/9/2017

Comment

Directions To Well

HWY 392/ RD 33 / N 3/10 / W 1/10 / N INTO

Congressional Location

Quarter 3	Quarter 4	Section	Township	TwNShp N/S Dir	Range	Range E/W Dir
NE	NE	15	6	N	66	W

Bottom Hole Location

North-South Distance (ft)	From N or S Line	East-West Distance (ft)	From E or W Line

Plug Back Total Depths

Date	Depth (ftKB)	Method	Com
8/8/1983	7,315.0	TAG	GUIDE SHOE
11/6/2009	7,300.0	TAG	
12/11/2009	7,307.2	TAG	TBG TALLY MEASUREMENT.
4/21/2014	7,302.8	TAG	TAG W/ 107.61'

Wellbore Sections

Section Des	Size (in)	Act Top, MD (ftKB)	Act Btm, MD (ftKB)
SURFACE	12 1/4	13	335
PRODUCTION	7 7/8	335	7,325

Zone Statuses

Zone Name	Status Date	Status	Fluid Type	Job	Prod Method
CODELL	9/3/1983	PR	Oil	DRILLING/CO...	
CODELL	6/1/2006	SI		CLEAN-OUT, 8...	
CODELL	1/24/2010	PR		RE-FRAC, 11/6...	
CODELL	4/16/2016	SI			
CODELL	10/5/2017	P&A		ABANDON WE...	

Casing Strings

Surface, 330.0ftKB

Casing Description	Run Date	OD (in)	Wt/Len (l...	Grade	Top, MD (ft...	MD (ftKB)
Surface	7/27/1983	8 5/8	24.00		13.0	330.0

Production, 3,986.1ftKB

Casing Description	Run Date	OD (in)	Wt/Len (l...	Grade	Top, MD (ft...	MD (ftKB)
Production	10/28/2009	4 1/2	11.60	M-80	13.0	3,986.1

Production, 7,315.0ftKB

Casing Description	Run Date	OD (in)	Wt/Len (l...	Grade	Top, MD (ft...	MD (ftKB)
Production	8/8/1983	4 1/2	11.60	N-80	13.0	7,315.0

Cement

Description	Top Depth (ftKB)	Bottom Depth (ftKB)
SURFACE CASING CEMENT	13.0	330.0
Production Casing Cement	6,530.0	7,315.0
PRODUCTION CASING REPAIR - ANNULAR CEMENT	13.0	708.0
PRODUCTION CASING REPAIR - ANNULAR CEMENT	1,500.0	2,728.0
PRODUCTION CASING REPAIR - ANNULAR CEMENT	3,973.0	4,041.0
Balance Plug	6,694.0	7,161.0
Balance Plug	1,441.0	2,510.0
Balance Plug	13.0	850.0

Tubing Strings

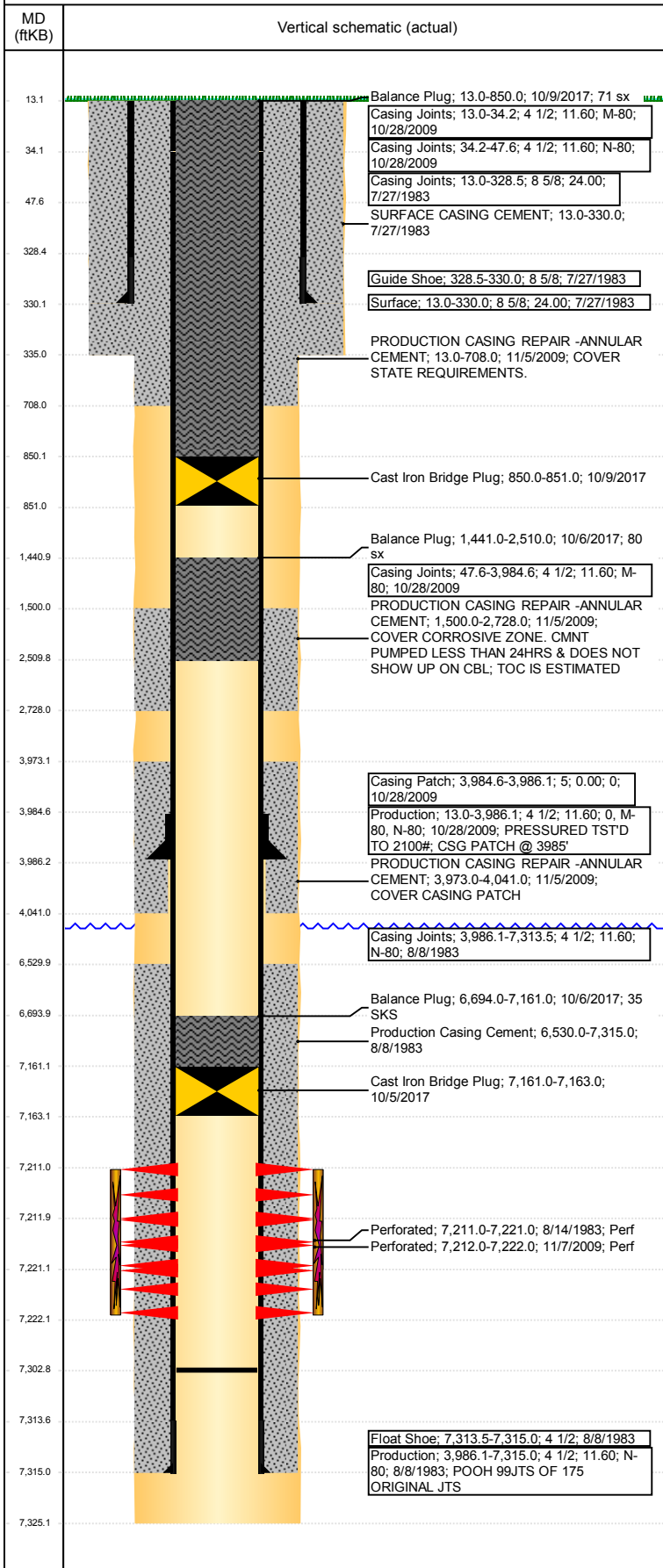
Tubing Description	Run Date	String...	ID (in)	Wt (lb/ft)	Grade	Len (ft)	Set De...
Tubing - Production	8/7/1989	2 3/8	2.00	4.70	J-55	7,187.00	

Tubing Components

Item Des	OD (in)	Wt (lb/ft)	Grade	Jts	Len (ft)	Btm (ftKB)	Btm (TVD) (ftKB)
Tubing	2 3/8	4.70	J-55	222	7,185.40	7,198.4	
Pump Seating Nipple	2 3/8			1	1.00	7,199.4	
Notched collar	2 3/8			1	0.60	7,200.0	

Well Name: **BERG 01**

VERTICAL - ORIGINAL HOLE, 11/25/2017 11:04:45 AM



Tubing Strings							
Tubing Description	Run Date	String...	ID (in)	Wt (lb/ft)	Grade	Len (ft)	Set De...
Tubing - Frac string	11/7/2009	2 7/8	2.44	6.50	N-80	7,086.48	7,097.9
Tubing Components							
Item Des	OD (in)	Wt (lb/ft)	Grade	Jts	Len (ft)	Btm (ftKB)	Btm (TVD) (ftKB)
Tubing	2 7/8	6.50	N-80	208	6,767.98	6,779.8	
Tubing	2 3/8	4.70	N-80	10	311.37	7,091.1	7,090.8
Packer	3.793	0.00	0	1	7.13	7,098.3	7,097.9
Tubing Description	Run Date	String...	ID (in)	Wt (lb/ft)	Grade	Len (ft)	Set De...
Tubing - Production	12/10/2009	2 3/8	2.00	4.70	J-55	7,184.22	
Tubing Components							
Item Des	OD (in)	Wt (lb/ft)	Grade	Jts	Len (ft)	Btm (ftKB)	Btm (TVD) (ftKB)
Tubing Pup Joint	2 3/8	4.70	J-55	1	10.00	21.0	
Tubing Pup Joint	2 3/8	4.70	J-55	1	10.00	31.0	
Tubing	2 3/8	4.70	J-55	232	7,162.70	7,193.7	
Seat Nipple	2 3/8	4.70	N-80	1	1.10	7,194.8	
Notched collar	2 3/8	4.70	J-55	1	0.42	7,195.2	
Tubing Description	Run Date	String...	ID (in)	Wt (lb/ft)	Grade	Len (ft)	Set De...
Tubing - Production	4/22/2014	2 3/8	2.00	4.70	J-55	5,783.96	5,796.6
Tubing Components							
Item Des	OD (in)	Wt (lb/ft)	Grade	Jts	Len (ft)	Btm (ftKB)	Btm (TVD) (ftKB)
EUE 8rd Tubing	2 3/8	4.70	J-55	187	5,779.46	5,792.5	
Pump Seating Nipple	2 3/8	1.10		1	1.10	5,793.6	5,793.2
Downhole Tools AS/TS Ret. Head	3 7/8			1	3.40	5,797.0	5,796.6
Tubing Description	Run Date	String...	ID (in)	Wt (lb/ft)	Grade	Len (ft)	Set De...
Tubing - Production	12/10/2014	2 3/8	2.00	4.70	J-55	7,181.56	
Tubing Components							
Item Des	OD (in)	Wt (lb/ft)	Grade	Jts	Len (ft)	Btm (ftKB)	Btm (TVD) (ftKB)
Pup Joint	2 3/8	4.70	J-55	1	10.00	22.0	
Tubing	2 3/8	4.70	J-55	232	7,169.86	7,191.9	
Pump Seating Nipple	2 3/8	1.10	J-55	1	1.30	7,193.2	
Notched collar	2 3/8	4.70	J-55	1	0.40	7,193.6	
Other In Hole							
Run Date	Des			OD (in)	Top (ftKB)	Btm (ftKB)	
10/5/2017	Cast Iron Bridge Plug			4	7,161.0	7,163.0	
10/9/2017	Cast Iron Bridge Plug			4	850.0	851.0	
Logs							
Date	Type				Top, MD (ftKB)	Btm, MD (ftKB)	
8/8/1983	COMPENSATED DENSITY				6,850.0	7,325.0	
8/8/1983	INDUCTION				330.0	7,325.0	
10/26/2009	CBL/CCL/GR				1,720.0	6,899.0	
11/6/2009	CBL/CCL/GR				0.0	4,300.0	
4/5/2013	GYRO				13.0	7,150.0	
Perforation Data							
Linked Zone	Bnch/St g	Sum of Entered Shot Total	Top (ftKB)	Btm (ftKB)	Date		
CODELL, ORIGINAL HOLE		20	7,211.00	7,221.00	8/14/1983		
CODELL, ORIGINAL HOLE		40	7,212.00	7,222.00	11/7/2009		
Total (Sum)		60					
Stimulation Intervals							
Start Date	Primary Job Type						
9/1/1983	DRILLING/COMPLETION - ORIGINAL						
Technical Result		Tech Result Details			Tech Result Note		
Comment							
MINIMAL INFO IN DENVER FILE FOR THIS JOB. PLATTEVILLE PUT IN THE DETAILS.							

Well Name: BERG 01

VERTICAL - ORIGINAL HOLE, 11/25/2017 11:04:45 AM

Stimulation Intervals

Start Date 12/4/2009	Primary Job Type RE-FRAC		
Technical Result Success	Tech Result Details According to Plan		Tech Result Note
Comment (CODELL REFRAC): ISIP - 2263 PSI. TREATMENT WENT WELL. AVG NOLTE - 0.09. POST ISIP - 3144 PSI. AVG VISC - 23.9 CP. AVG TEMP - 62.34F. AVG PH - 10.24.			

