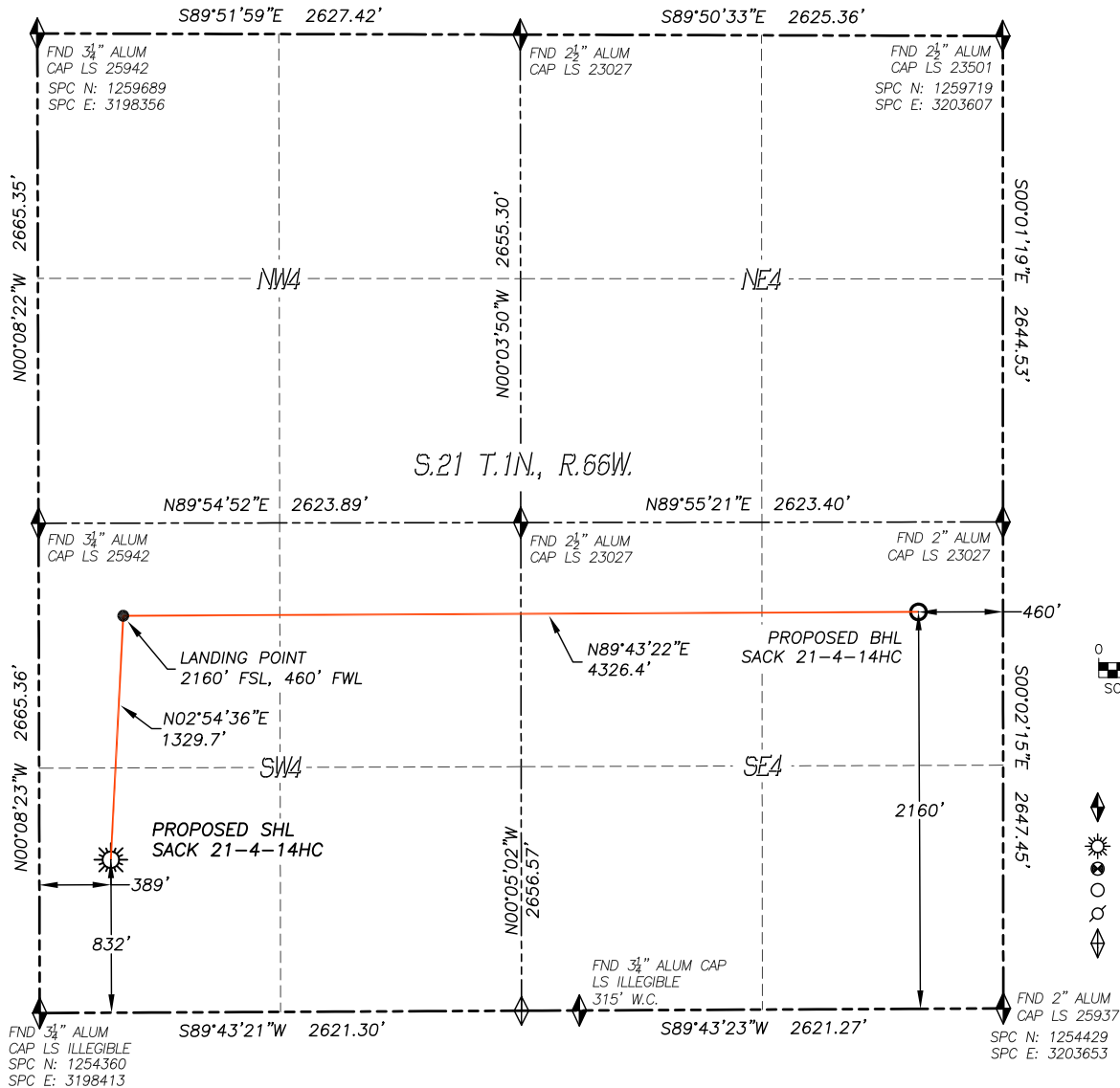


WELL LOCATION CERTIFICATE

SACK 21-4-14HC

SECTION: 21
TOWNSHIP: 1N
RANGE: 66W



LEGEND

- ◆ FOUND MONUMENT AS DESCRIBED
- ☀ PROPOSED WELL
- ⊙ EXISTING WELL
- BOTTOM HOLE
- ⊗ ABANDONED WELL
- ◇ CALCULATED POSITION

IN ACCORDANCE WITH A REQUEST FROM WARD PETROLEUM CORP., DALEY LAND SURVEYING, INC. HAS DETERMINED THE SURFACE LOCATION OF THE SACK 21-4-14HC WELL TO BE 832' FSL, 389' FWL, AND THE BOTTOM HOLE LOCATION TO BE 2160' FSL, 460' FWL, AS MEASURED AT NINETY (90) DEGREES FROM THE SECTION LINES OF SECTION 21, TOWNSHIP 1 NORTH, RANGE 66 WEST, OF THE 6TH PRINCIPAL MERIDIAN, WELD COUNTY, COLORADO. I HEREBY STATE THAT THIS WELL LOCATION CERTIFICATE WAS PREPARED BY ME OR UNDER MY DIRECT SUPERVISION, THAT THE WORK WAS COMPLETED ON 9/22/2017 FOR AND ON BEHALF OF WARD PETROLEUM CORP., AND THAT THIS MAP DOES NOT REPRESENT A BOUNDARY SURVEY, IT IS NOT A LAND SURVEY PLAT OR AN IMPROVEMENT SURVEY PLAT AND IT IS NOT TO BE RELIED UPON FOR THE ESTABLISHMENT OF FENCE, BUILDING OR OTHER FUTURE IMPROVEMENT LINES.

NOTES:

- 1) BEARINGS FOR THIS MAP ARE ASSUMED AND BASED UPON GPS OBSERVATIONS MADE BETWEEN MONUMENTS LOCATED AT THE SOUTHWEST CORNER AND WEST QUARTER CORNER OF SECTION 21, T.1N., R.66W.
- 2) HORIZONTAL DATUM IS NAD83. COORDINATES SHOWN ARE GRID COORDINATES, COLORADO STATE PLANE NORTH ZONE (501).
- 3) VERTICAL DATUM IS NAVD88 AND ORIGINATES FROM THE LOCAL C.O.R.S. NETWORK, UTILIZING THE GEOID12A MODEL.
- 4) SEE LOCATION DRAWING FOR VISIBLE IMPROVEMENTS WITHIN 500' OF PROPOSED DISTURBED AREA.
- 5) SURFACE USE: AGRICULTURAL.
- 6) INST. OPERATOR: SCOTT ESTABROOKS.

NEAREST CULTURAL ITEMS:

BUILDING: 726'± SW
BUILDING UNIT: 549'± NW
HIGH OCC. BLD. UNIT: 5280'±
DES. OUTSIDE ACTIVITY AREA: 5280'±
PUBLIC ROAD: 380'± W
ABOVE GROUND UTILITY: 369'± W
RAILROAD: 5280'±
PROPERTY LINE: 389'± W

NAD 83 LATITUDE AND LONGITUDE

SURFACE LOCATION:

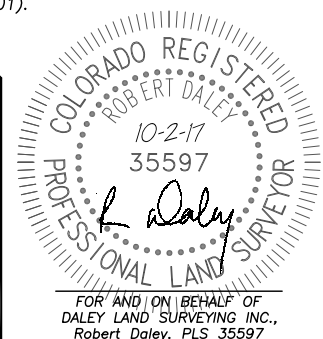
LATITUDE: N40.03172°
LONGITUDE: W104.79008°
SPC NORTH: 1255197
SPC EAST: 3198793
ELEV: 5019'
PDOP: 1.1
QTR/QTR: SW4/SW4

LANDING POINT:

LATITUDE: N40.03536°
LONGITUDE: W104.78984°
SPC NORTH: 1256525
SPC EAST: 3198850

BOTTOM HOLE:

LATITUDE: N40.03542°
LONGITUDE: W104.77439°
SPC NORTH: 1256582
SPC EAST: 3203174



SHEET 1 OF 1

Drawing Date: 10/02/17