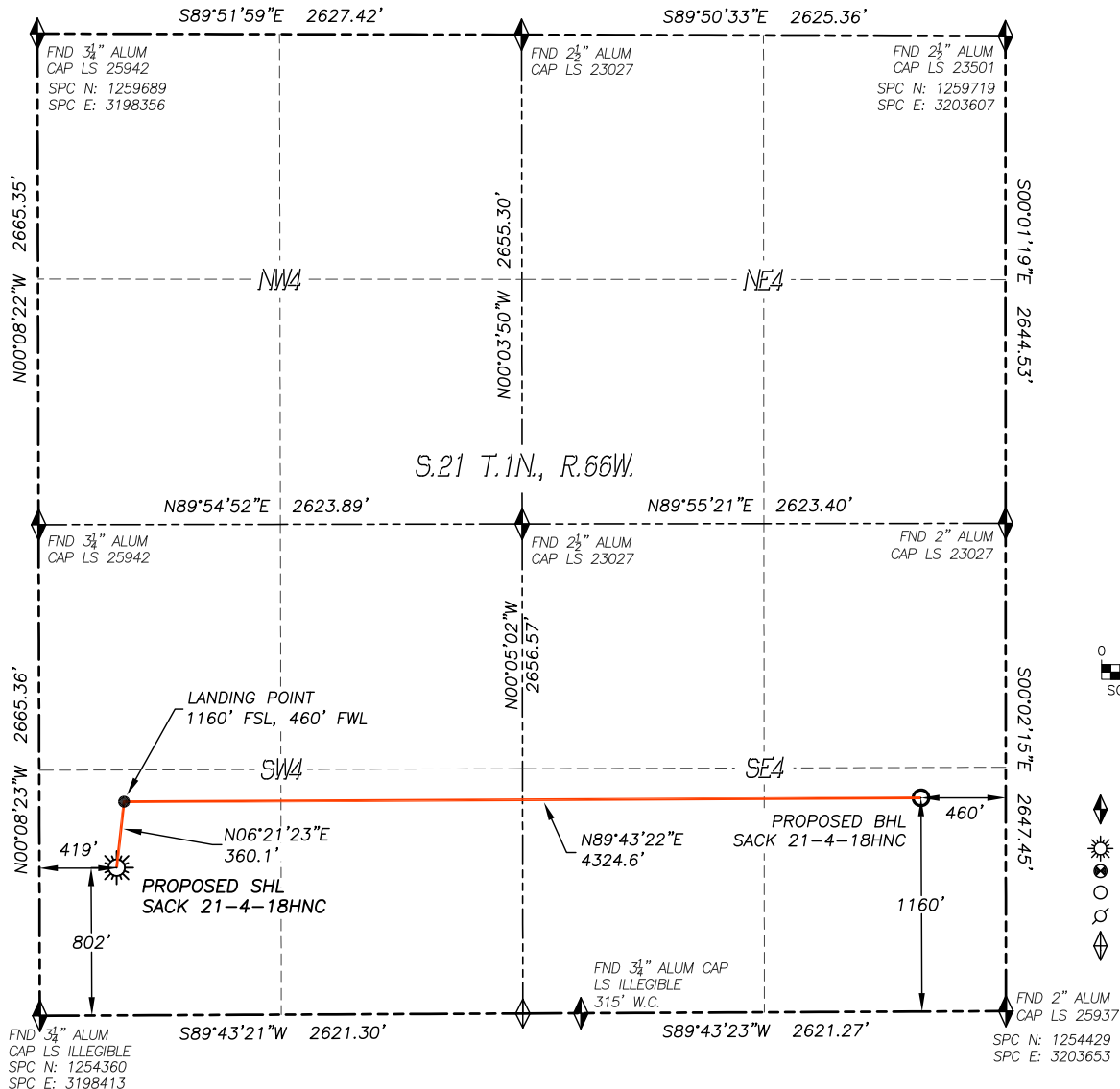


# WELL LOCATION CERTIFICATE

## SACK 21-4-18HNC

SECTION: 21  
TOWNSHIP: 1N  
RANGE: 66W



0 500 1000  
SCALE: 1" = 1000'

### LEGEND

- ◆ FOUND MONUMENT AS DESCRIBED
- ☀ PROPOSED WELL
- ⊙ EXISTING WELL
- BOTTOM HOLE
- ⊗ ABANDONED WELL
- ◇ CALCULATED POSITION

IN ACCORDANCE WITH A REQUEST FROM WARD PETROLEUM CORP., DALEY LAND SURVEYING, INC. HAS DETERMINED THE SURFACE LOCATION OF THE SACK 21-4-18HNC WELL TO BE 802' FSL, 419' FWL, AND THE BOTTOM HOLE LOCATION TO BE 1160' FSL, 460' FEL, AS MEASURED AT NINETY (90) DEGREES FROM THE SECTION LINES OF SECTION 21, TOWNSHIP 1 NORTH, RANGE 66 WEST, OF THE 6TH PRINCIPAL MERIDIAN, WELD COUNTY, COLORADO. I HEREBY STATE THAT THIS WELL LOCATION CERTIFICATE WAS PREPARED BY ME OR UNDER MY DIRECT SUPERVISION, THAT THE WORK WAS COMPLETED ON 9/22/2017 FOR AND ON BEHALF OF WARD PETROLEUM CORP., AND THAT THIS MAP DOES NOT REPRESENT A BOUNDARY SURVEY, IT IS NOT A LAND SURVEY PLAT OR AN IMPROVEMENT SURVEY PLAT AND IT IS NOT TO BE RELIED UPON FOR THE ESTABLISHMENT OF FENCE, BUILDING OR OTHER FUTURE IMPROVEMENT LINES.

### NOTES:

- 1) BEARINGS FOR THIS MAP ARE ASSUMED AND BASED UPON GPS OBSERVATIONS MADE BETWEEN MONUMENTS LOCATED AT THE SOUTHWEST CORNER AND WEST QUARTER CORNER OF SECTION 21, T.1N., R.66W.
- 2) HORIZONTAL DATUM IS NAD83. COORDINATES SHOWN ARE GRID COORDINATES, COLORADO STATE PLANE NORTH ZONE (501).
- 3) VERTICAL DATUM IS NAVD88 AND ORIGINATES FROM THE LOCAL C.O.R.S. NETWORK, UTILIZING THE GEOID12A MODEL.
- 4) SEE LOCATION DRAWING FOR VISIBLE IMPROVEMENTS WITHIN 500' OF PROPOSED DISTURBED AREA.
- 5) SURFACE USE: AGRICULTURAL.
- 6) INST. OPERATOR: SCOTT ESTABROOKS.

### NEAREST CULTURAL ITEMS:

BUILDING: 722'± SW  
BUILDING UNIT: 590'± NW  
HIGH OCC. BLD. UNIT: 5280'±  
DES. OUTSIDE ACTIVITY AREA: 5280'±  
PUBLIC ROAD: 410'± W  
ABOVE GROUND UTILITY: 399'± W  
RAILROAD: 5280'±  
PROPERTY LINE: 419'± W

### NAD 83 LATITUDE AND LONGITUDE

#### SURFACE LOCATION:

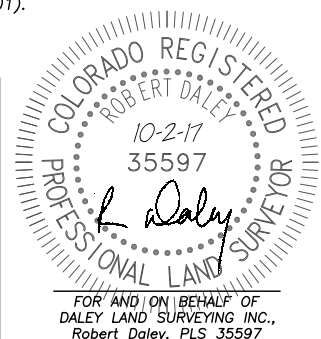
LATITUDE: N40.03164°  
LONGITUDE: W104.78997°  
SPC NORTH: 1255168  
SPC EAST: 3198823  
ELEV: 5020'  
PDOP: 1.1  
QTR/QTR: SW4/SW4

#### LANDING POINT:

LATITUDE: N40.03262°  
LONGITUDE: W104.78983°  
SPC NORTH: 1255526  
SPC EAST: 3198860

#### BOTTOM HOLE:

LATITUDE: N40.03268°  
LONGITUDE: W104.77439°  
SPC NORTH: 1255582  
SPC EAST: 3203183



SHEET 1 OF 1

Drawing Date: 10/02/17