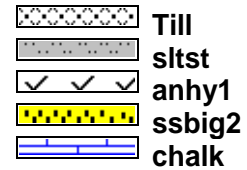
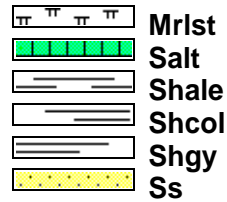
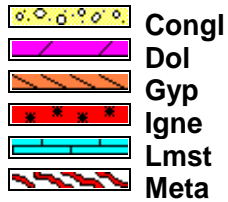
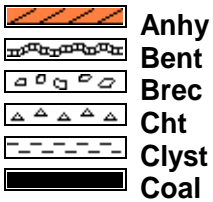


Comments

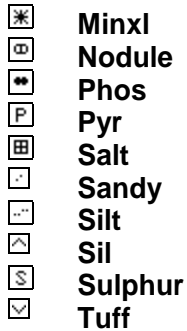
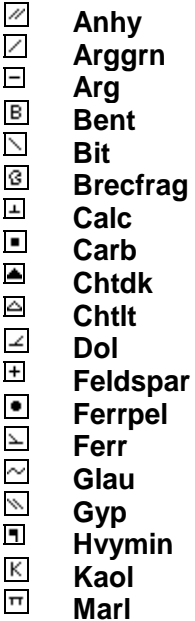
- 1) Set 8 5/8' Surface casing @ 434 KB
- 2) Drilled 7 7/8" hole to TD
- 3) Contractor: Excell #10
- 4) Logged (kind of), Triple Combo, Slumberger on October 26th, 2017
- 5) Toolpusher, Mark Zion
- 6) Company Man Tom Thomas

ROCK TYPES

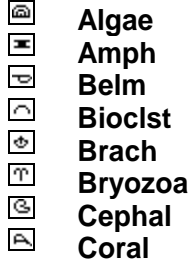


ACCESSORIES

MINERAL



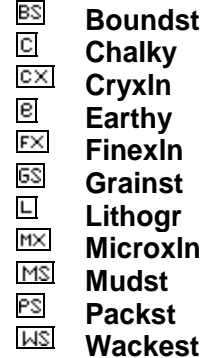
FOSSIL



STRINGER

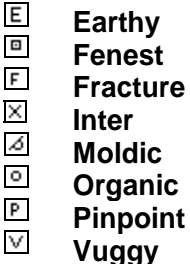


TEXTURE



OTHER SYMBOLS

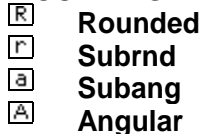
POROSITY TYPE



SORTING



ROUNDING



OIL SHOWS

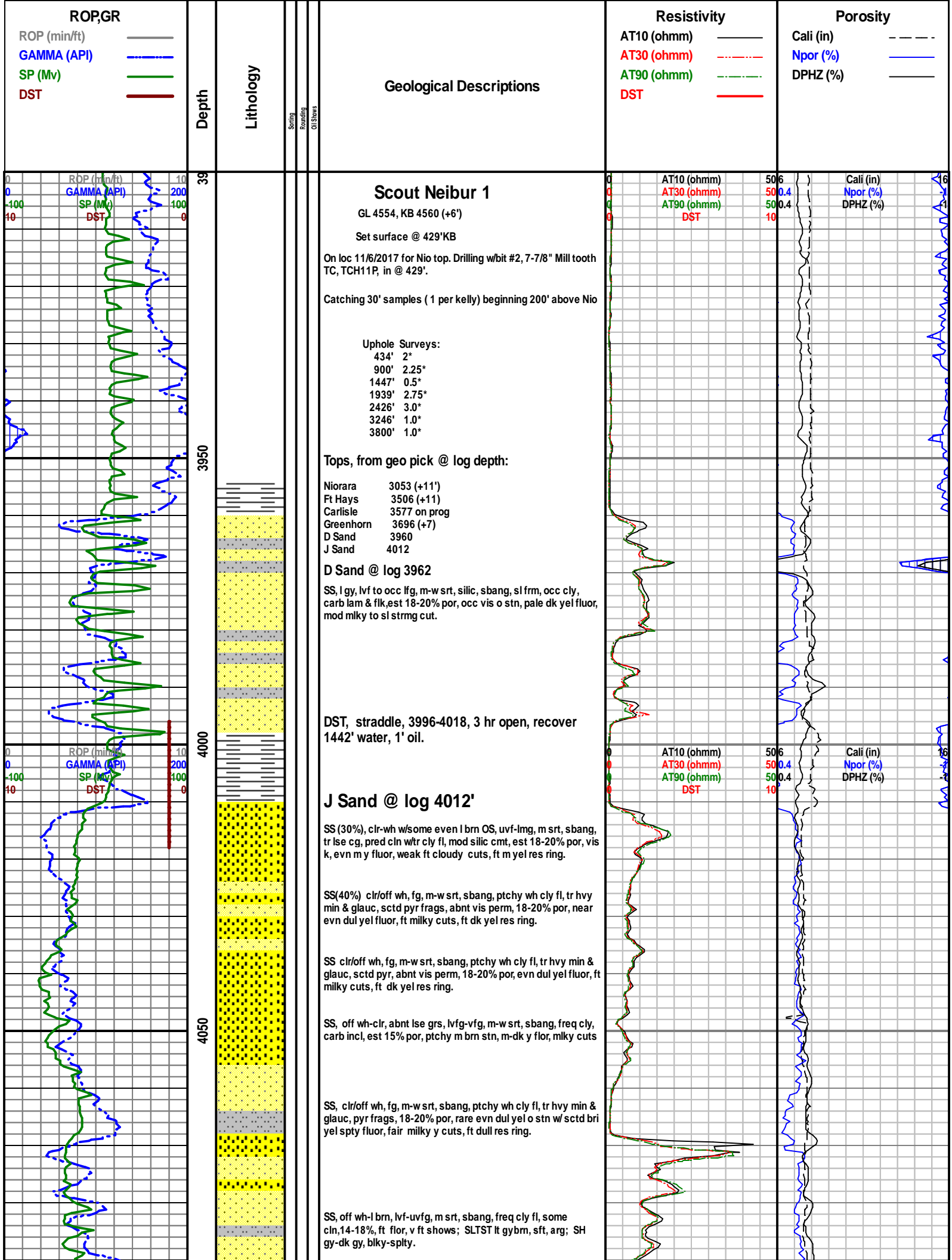


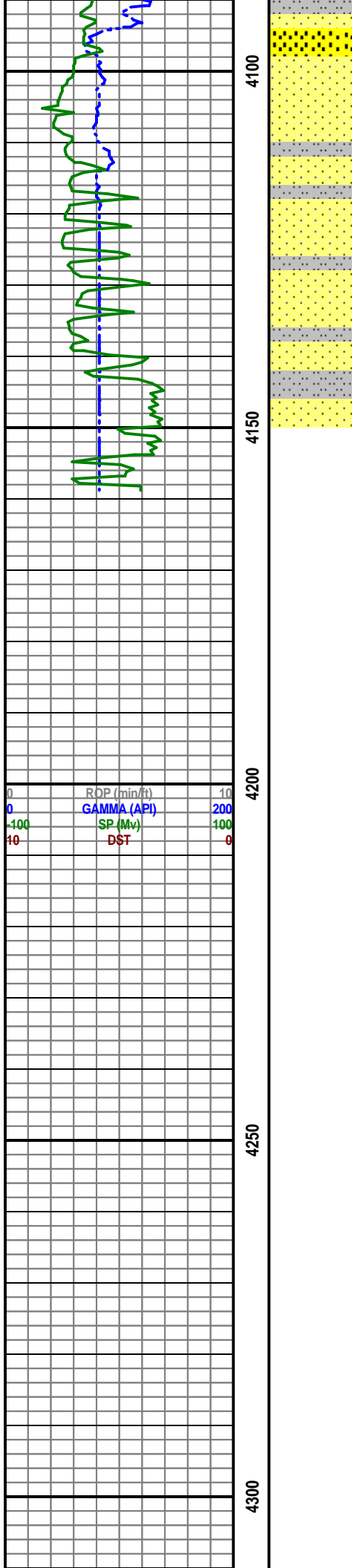
INTERVALS



EVENTS

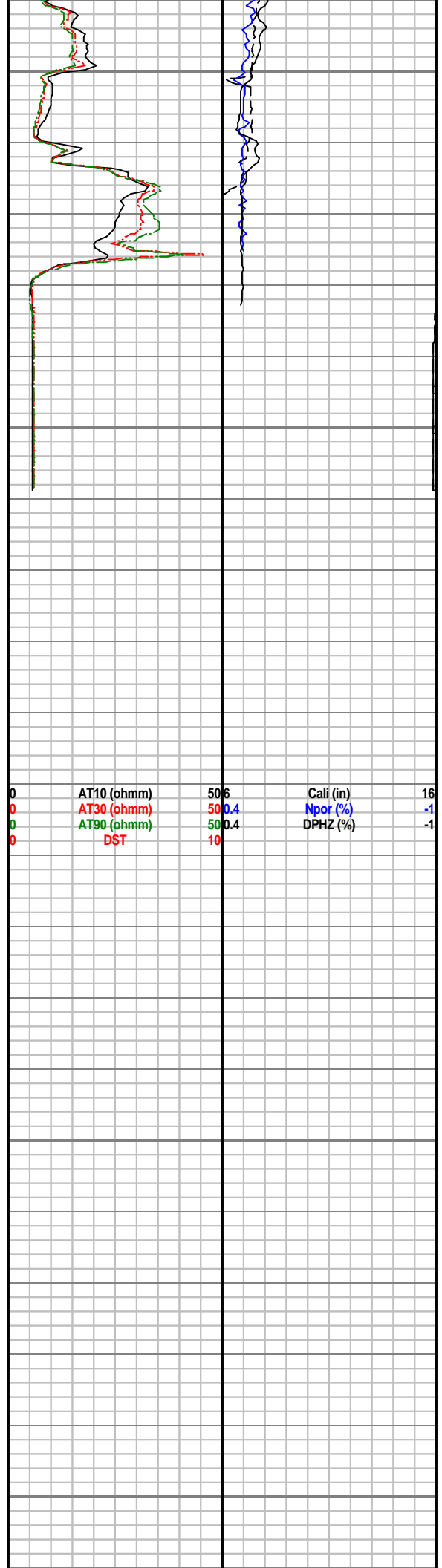






SS, off wh-crm-lt tan gy, lvf-uvfg, m-p srt, sbang, freq cly fl, some chn, por varies 12-18%, minor min flor, n shows;

SS, off wh-crm-lt tan gy, lvf-uvfg, m-p srt, sbang, freq cly fl, some chn, por varies 12-18%, minor min flor, n shows;



[illegible]