

WELLBORE CONTINUES
INTO SECTION 13

T2N, R64W

N. 1/4 COR.
SEC. 24, T2N, R64W
FOUND 3 1/4" ALUM. CAP
P.L.S. NO. 6973

NE. COR.
SEC. 24, T2N, R64W
FOUND 2 1/2" ALUM. CAP
P.L.S. NO. 28656

MATCH LINE
SEE SHEET 2

SURFACE LOCATION
GROUND ELEVATION= 4923.4'
LATITUDE= 40.120602°
LONGITUDE= -104.501071°
1/4 1/4: NE1/4 SW1/4

LANDING POINT
LATITUDE= 40.117914°
LONGITUDE= -104.507401°
1/4 1/4: SW1/4 SW1/4

BOTTOM HOLE LOCATION
LATITUDE= 40.144251°
LONGITUDE= -104.507564°
1/4 1/4: NW1/4 NW1/4

24

CEN. 1/4 COR.
SEC. 24, T2N, R64W
FOUND 3 1/4" ALUM. CAP
P.L.S. NO. 6973

E. 1/4 COR.
SEC. 24, T2N, R64W
FOUND 3 1/4" ALUM. CAP
L.S. NO. 23027

BOYD 24-1H
SURFACE LOCATION

W. 1/4 COR.
SEC. 24, T2N, R64W
FOUND 3 1/4" ALUM. CAP
P.L.S. NO. 6973

S 89°29'42" W
2637.63' (M)

S 89°29'44" W
2637.73' (M)

N 00°54'36" W 2642.38' (M)

N 00°54'46" W 9594'

N 00°54'46" W
2644.00' (M)

N 00°54'50" W 2645.62' (M)

N 00°54'50" W 2645.51' (M)

N 00°54'14" W 2642.59' (M)

2255'

N 00°55'06" W
2638.93' (M)

S 89°24'56" W 2638.28' (M)

S. 1/4 COR.
SEC. 24, T2N, R64W
FOUND 3 1/4" ALUM. CAP
L.S. NO. 38046

S 89°38'19" W 2637.58' (M)

SE. COR.
SEC. 24, T2N, R64W
FOUND 3 1/4" ALUM. CAP
L.S. NO. 27269



480'

460'

LANDING POINT

1441'

CERTIFICATE OF SURVEYOR:

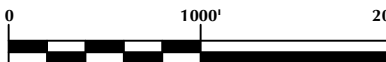
THIS IS TO CERTIFY THAT THE ABOVE PLAT WAS PREPARED FROM FIELD NOTES OF ACTUAL SURVEY MADE BY ME OR UNDER MY SUPERVISION AND THAT THE SAME ARE TRUE AND CORRECT TO THE BEST OF MY KNOWLEDGE AND BELIEF. THIS CERTIFICATE DOES NOT REPRESENT A LAND SURVEY PLAT OR IMPROVEMENT SURVEY PLAT AS DEFINED BY C.R.S. 38-51-302 AND CANNOT BE RELIED UPON TO DETERMINE OWNERSHIP.

John R. Slaugh
JOHN R. SLAUGH
PROFESSIONAL LAND SURVEYOR
COLORADO REGISTRATION NUMBER 13230

NOTICE:
ACCORDING TO COLORADO STATE LAW YOU MUST COMMENCE ANY LEGAL ACTION BASED UPON ANY DEFECT IN THIS SURVEY WITHIN THREE YEARS AFTER YOU FIRST DISCOVER SUCH DEFECT. IN NO EVENT MAY ANY ACTION BASED UPON ANY DEFECT IN THIS SURVEY BE COMMENCED MORE THAN TEN YEARS FROM THE DATE ON THE CERTIFICATION SHOWN HEREON.

WELL DISTANCES:

BUILDING: ±721' SE
BUILDING UNIT: ±974' SE
PUBLIC ROAD: ±294' NW
ABOVE GROUND UTILITY: ±1285' SE
RAILROAD: ±1484' SE
PROPERTY LINE: ±227' NW
HIGH OCCUPANCY BUILDING UNIT: ±4064' SW
DESIGNATED OUTSIDE ACTIVITY AREA: 5280'+



SCALE: 1" = 1000'

NOTES:

- ▲ INDICATES SECTION CORNER.
- INDICATES CALCULATED CORNER.
- ELEVATION BASED ON NAVD88 (GEOID12B).
- BASIS OF BEARING DERIVED FROM COLORADO COORDINATE SYSTEM OF 1983 NORTH ZONE.
- ALL MEASURED DISTANCES ARE GRID.
COMBINED SCALE FACTOR: .99972739 CALCULATED FROM THE C. 1/4 CORNER OF SECTION 24, T2N, R64W.
OPERATOR: PRESTON KUNTSEN / PDOP = 1.6.
- SEE ADDENDUM TO WELL LOCATION CERTIFICATE FOR EXISTING IMPROVEMENTS WITHIN 500' OF THE WELL PAD.
- WELL FOOTAGES ARE MEASURED AT RIGHT ANGLES TO THE SECTION LINES.
- THE BOTTOM OF HOLE BEARS N00°54'46"W, 9594' FROM THE LANDING POINT.

WELL PAD - ARNOLD 02N-64W-24

BOYD 24-1H
WELL LOCATION CERTIFICATE
1441' FSL & 2255' FWL NESW (SURFACE)
460' FSL & 480' FWL SWSW (LANDING POINT)
LOCATED IN SECTION 24
460' FSL & 480' FWL NWNW (BOTTOM)
LOCATED IN SECTION 13
T2N, R64W, 6TH P.M.
WELD COUNTY, COLORADO



5950 Cedar Springs Road, Suite 200
Dallas, Texas 75235



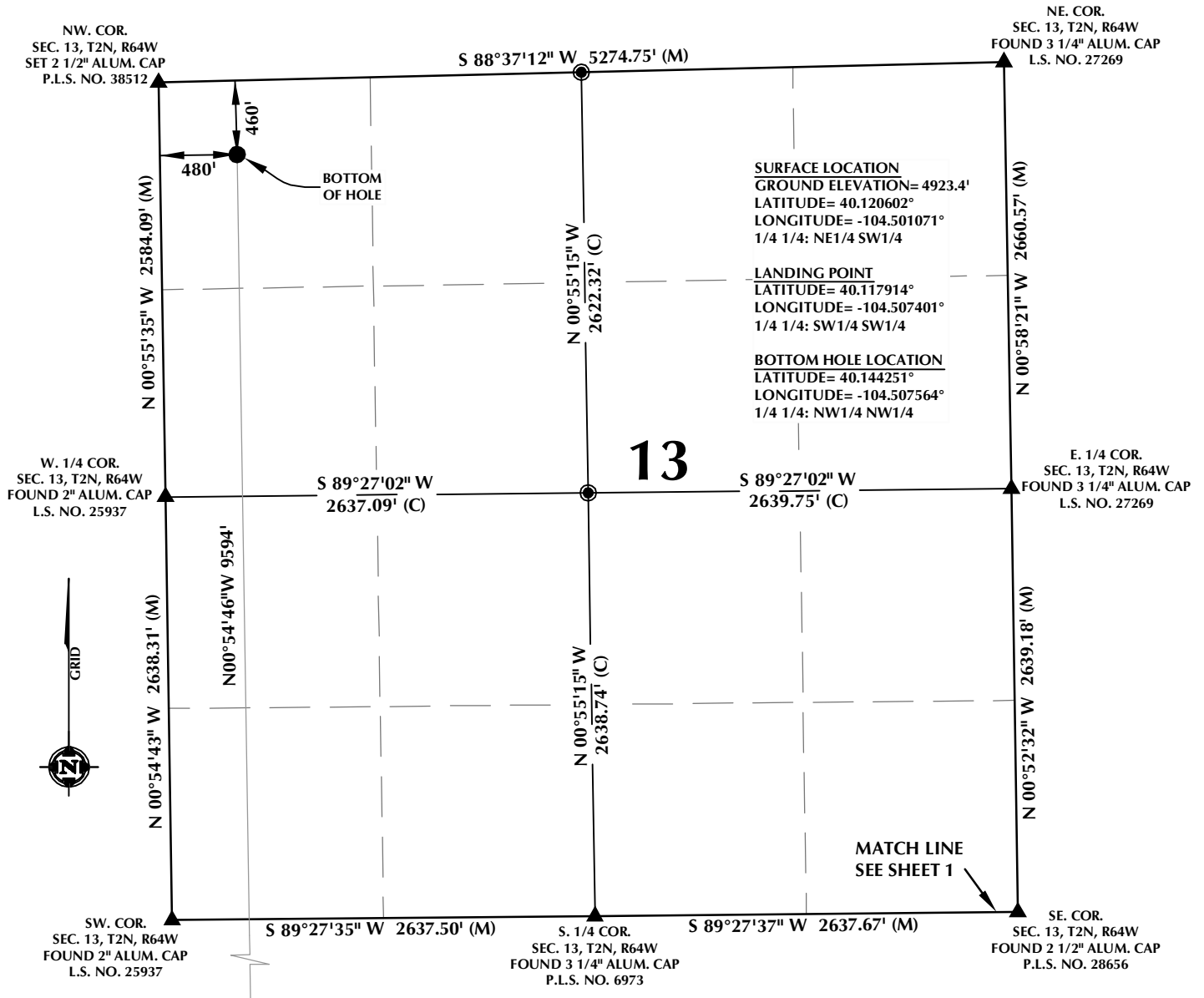
CONSULTING, LLC

SHERIDAN OFFICE
1095 Saberton Avenue
Sheridan, Wyoming 82801
Phone 307-674-0609

LOVELAND OFFICE
1635 Foxtrail Drive, Suite 204
Loveland, Colorado 80538
Phone 970-776-4331

DRAFTED BY:	GLK	CHECKED BY:	JRS	SHEET NO:
DATE DRAFTED:	10/30/17	DATE SURVEYED:	9/29/17	1
REVISED:		FILE NAME:	17-138	1 OF 2

T2N, R64W



CERTIFICATE OF SURVEYOR:

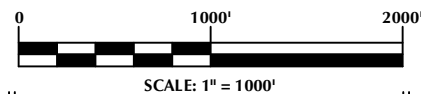
THIS IS TO CERTIFY THAT THE ABOVE PLAT WAS PREPARED FROM FIELD NOTES OF ACTUAL SURVEY MADE BY ME OR UNDER MY SUPERVISION AND THAT THE SAME ARE TRUE AND CORRECT TO THE BEST OF MY KNOWLEDGE AND BELIEF. THIS CERTIFICATE DOES NOT REPRESENT A LAND SURVEY PLAT OR IMPROVEMENT SURVEY PLAT AS DEFINED BY C.R.S. 38-51-302 AND CANNOT BE RELIED UPON TO DETERMINE OWNERSHIP.

John R. Slaugh
JOHN R. SLAUGH
 PROFESSIONAL LAND SURVEYOR
 COLORADO REGISTRATION NUMBER 13230

NOTICE:
 ACCORDING TO COLORADO STATE LAW YOU MUST COMMENCE ANY LEGAL ACTION BASED UPON ANY DEFECT IN THIS SURVEY WITHIN THREE YEARS AFTER YOU FIRST DISCOVER SUCH DEFECT. IN NO EVENT MAY ANY ACTION BASED UPON ANY DEFECT IN THIS SURVEY BE COMMENCED MORE THAN TEN YEARS FROM THE DATE ON THE CERTIFICATION SHOWN HEREON.

WELL DISTANCES:

BUILDING: ±721' SE
BUILDING UNIT: ±974' SE
PUBLIC ROAD: ±294' NW
ABOVE GROUND UTILITY: ±1285' SE
RAILROAD: ±1484' SE
PROPERTY LINE: ±227' NW
HIGH OCCUPANCY BUILDING UNIT: ±4064' SW
DESIGNATED OUTSIDE ACTIVITY AREA: 5280'+



NOTES:

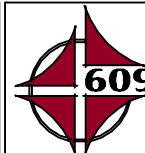
- ▲ INDICATES SECTION CORNER.
- INDICATES CALCULATED CORNER.
- ELEVATION BASED ON NAVD88 (GEOID12B).
- BASIS OF BEARING DERIVED FROM COLORADO COORDINATE SYSTEM OF 1983 NORTH ZONE.
- ALL MEASURED DISTANCES ARE GRID.
 COMBINED SCALE FACTOR: .99972739 CALCULATED FROM THE C. 1/4 CORNER OF SECTION 24, T2N, R64W.
 OPERATOR: PRESTON KUNTSEN / PDOP = 1.6.
- SEE ADDENDUM TO WELL LOCATION CERTIFICATE FOR EXISTING IMPROVEMENTS WITHIN 500' OF THE WELL PAD.
- WELL FOOTAGES ARE MEASURED AT RIGHT ANGLES TO THE SECTION LINES.
- THE BOTTOM OF HOLE BEARS N00°54'46"W, 9594' FROM THE LANDING POINT.

WELL PAD - ARNOLD 02N-64W-24

BOYD 24-1H
WELL LOCATION CERTIFICATE
 1441' FSL & 2255' FWL NESW (SURFACE)
 460' FSL & 480' FWL SWSW (LANDING POINT)
 LOCATED IN SECTION 24
 460' FNL & 480' FWL NWNW (BOTTOM)
 LOCATED IN SECTION 13
 T2N, R64W, 6TH P.M.
 WELD COUNTY, COLORADO



5950 Cedar Springs Road, Suite 200
 Dallas, Texas 75235



SHERIDAN OFFICE
 1095 Saberton Avenue
 Sheridan, Wyoming 82801
 Phone 307-674-0609

LOVELAND OFFICE
 1635 Foxtrail Drive, Suite 204
 Loveland, Colorado 80538
 Phone 970-776-4331

DRAFTED BY:	GLK	CHECKED BY:	JRS	SHEET NO:
DATE DRAFTED:	10/30/17	DATE SURVEYED:	9/29/17	2
REVISED:		FILE NAME:	17-138	2 OF 2