

OPERATOR: **Extraction Oil & Gas**

WELL NAME: **MLD 4**

FIELD NAME: DJ Basin - Wattenberg

DRILLING RIG: Patterson 346

API #: 05-123-44815

LAT/LONG: 40.303969, -104.996266

SURFACE HOLE: NWNW S22-T4N-R68W, 805' FNL, 716' FWL

BOTTOM HOLE: S22-T4N-R68W, 2190' FNL, 460' FEL

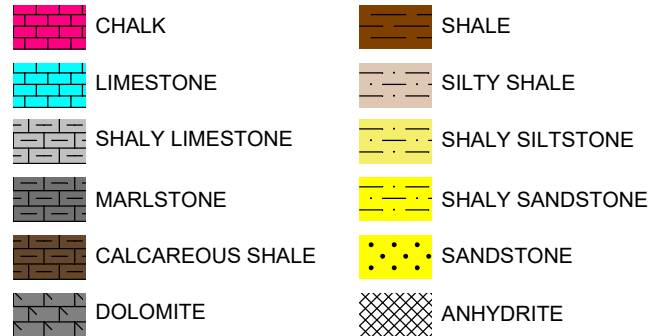


Earth Science Agency, LLC

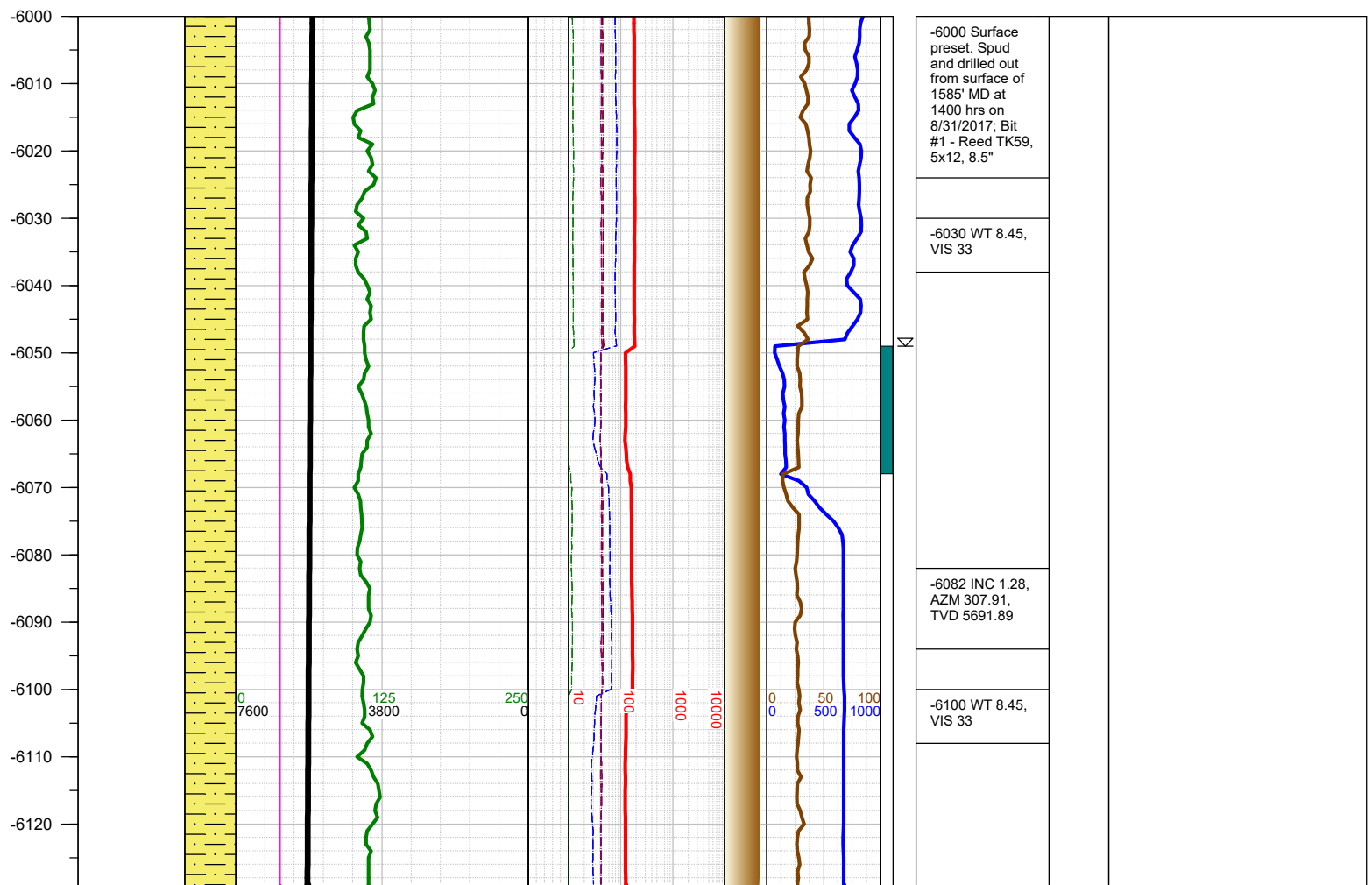
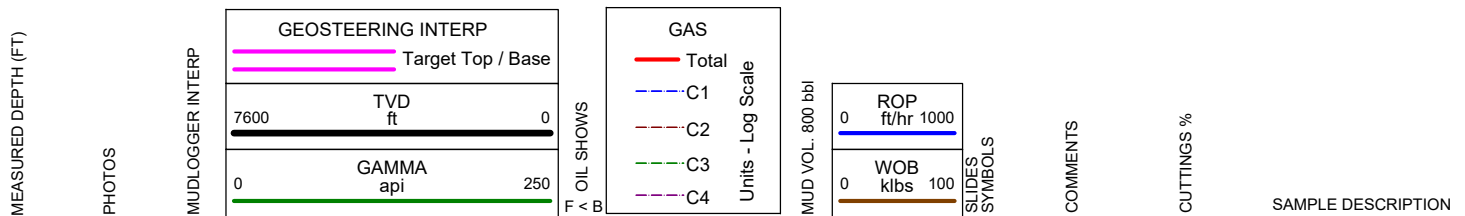
COUNTY: Weld
STATE: Colorado
GROUND ELEVATION: 4876'
KELLY BUSHING: 4901'
DRILLING FLUID: OBM
TVD VS. MD: 6917' / 11570'
SPUD DATE: August 31, 2017
TD DATE: September 2, 2017

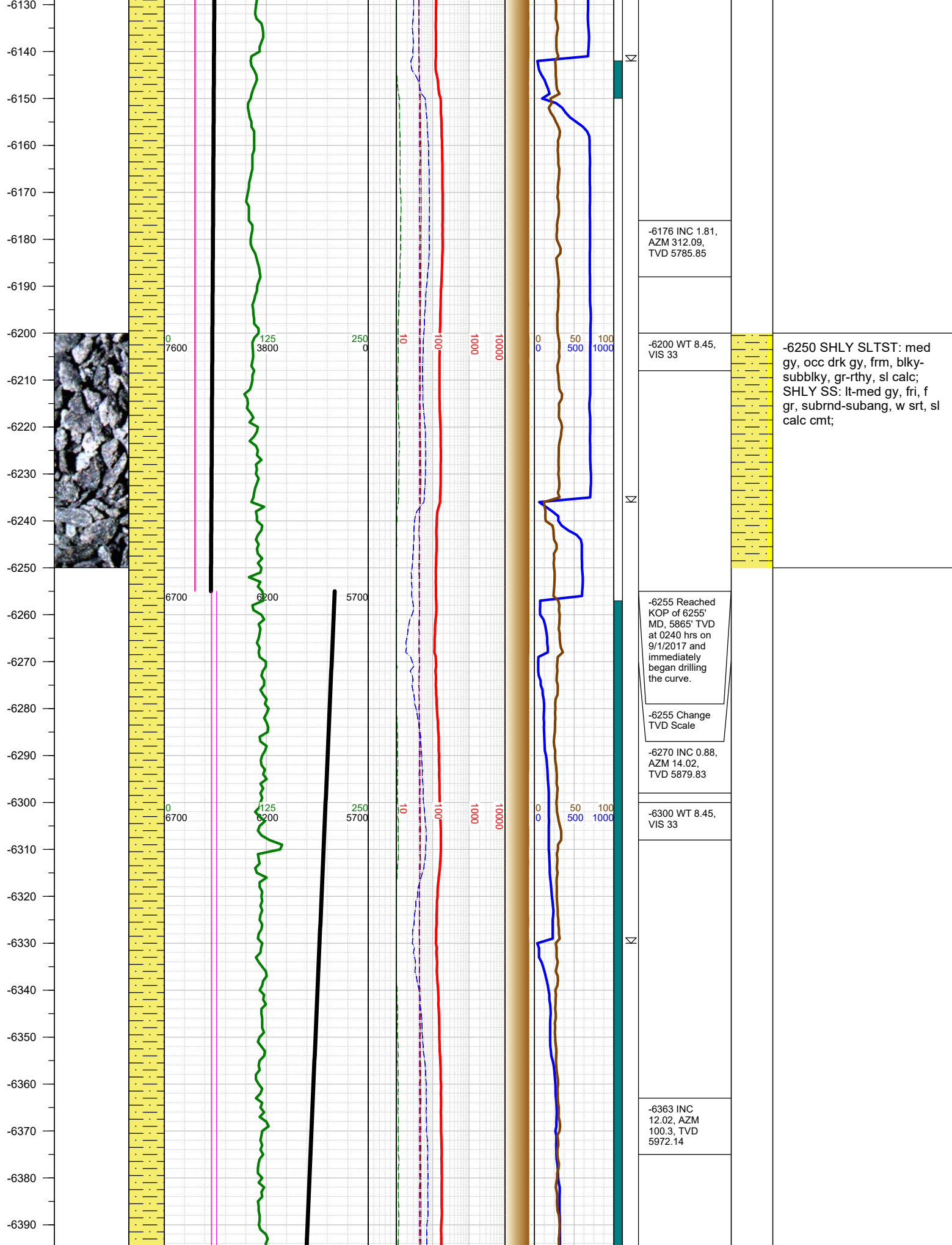
DEPTHS LOGGED: 6000' - 11570'
DATES LOGGED: August 31, 2017 - September 2, 2017
GEOLOGISTS: Ross Apodaca, Scott Snoy
SCALE: 5" = 100'

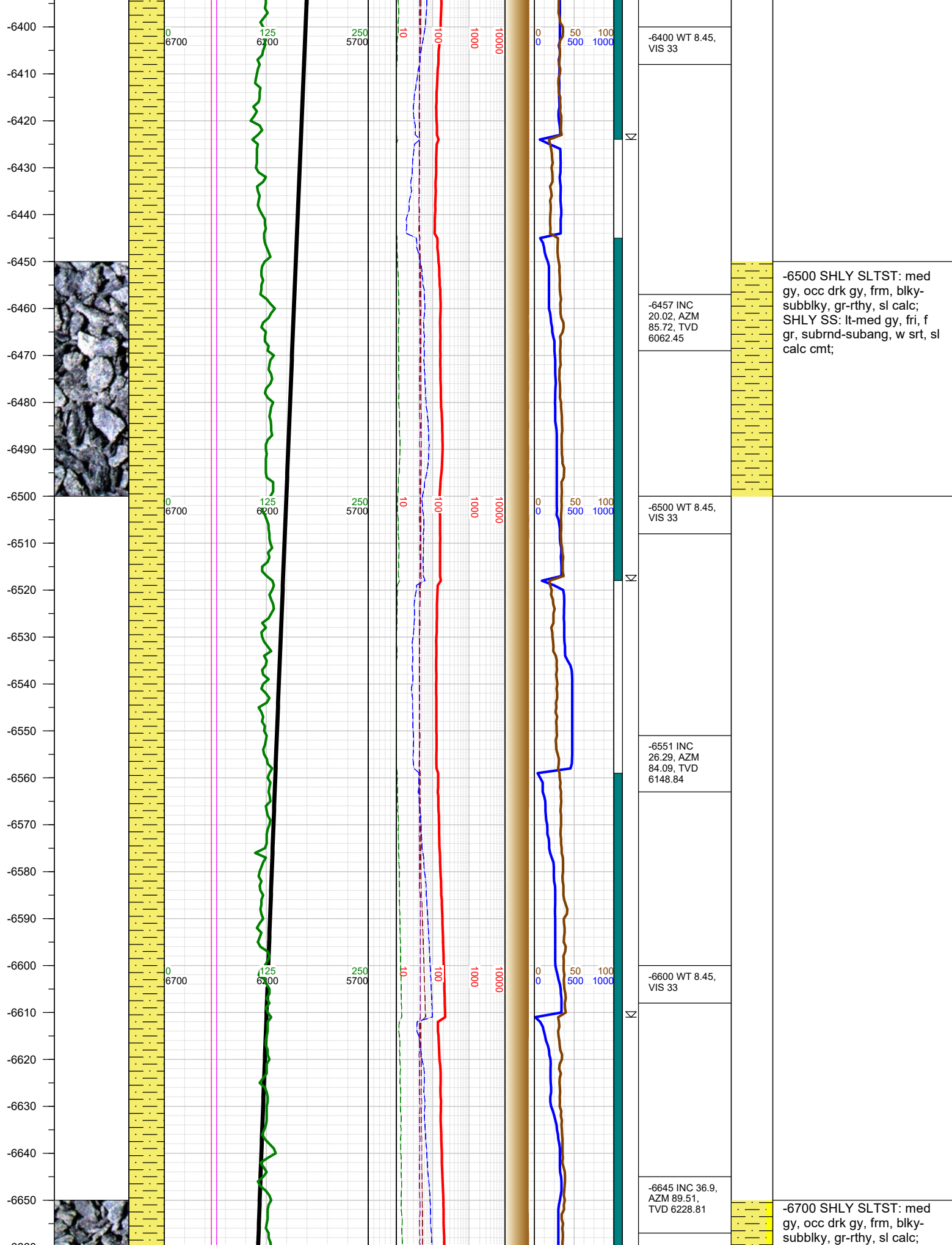
LEGEND

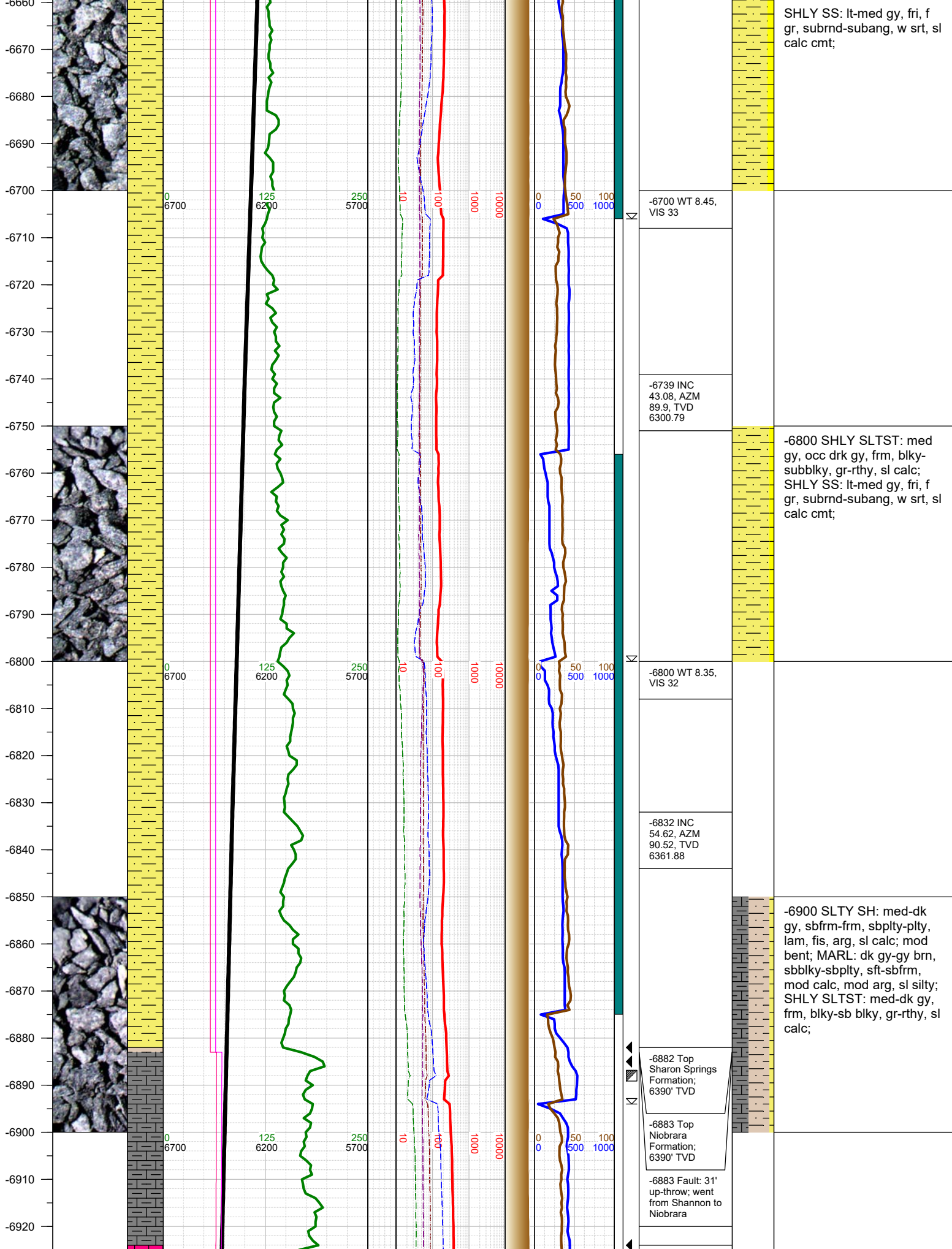


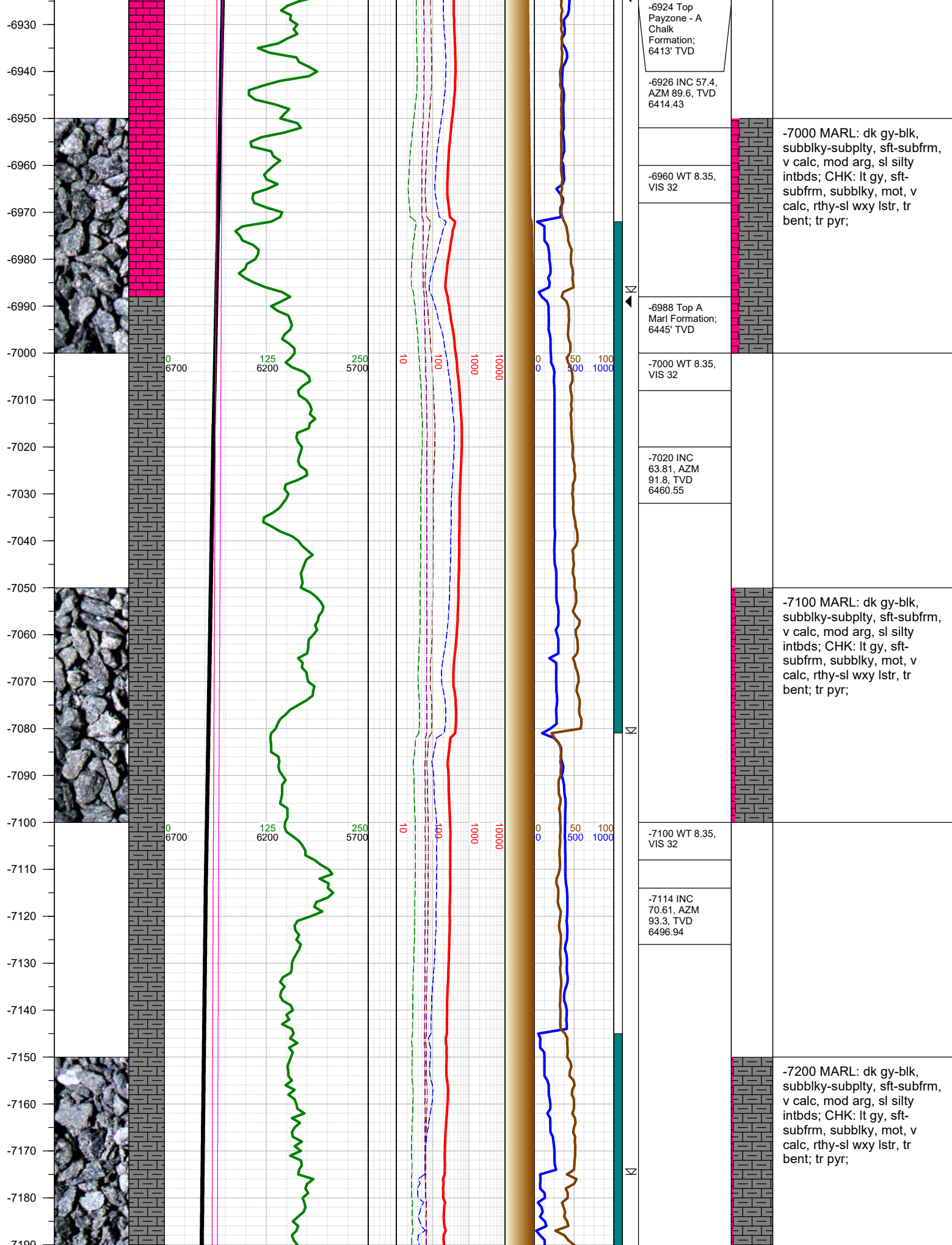
FORMATION \approx CONNECTION Δ MIDNIGHT NEW BIT GAS SHOW FAULT

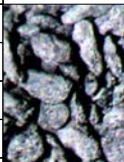
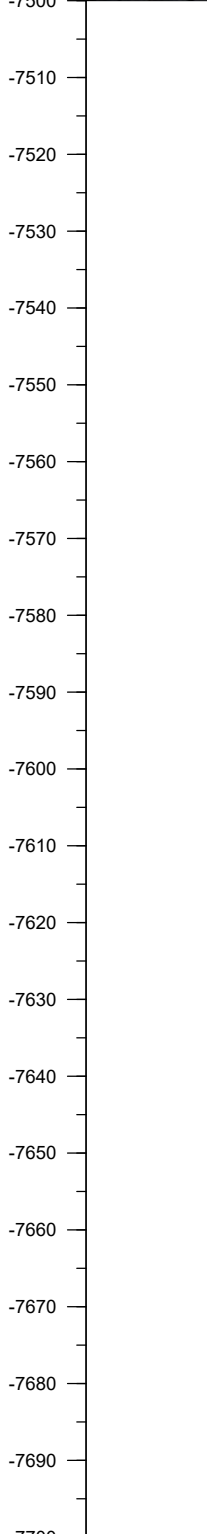
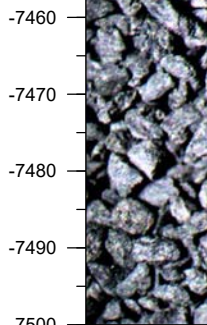












subblky-subply, sft-subfrm,
v calc, mod arg, sl silty
intbds; CHK: lt gy, sft-
subfrm, subblky, mot, v
calc, rthy-sl wxy lstr, tr
bent; tr pyr;

-7490 INC
90.19, AZM
89.29, TVD
6535.36

-7510 WT 9.25,
VIS 32

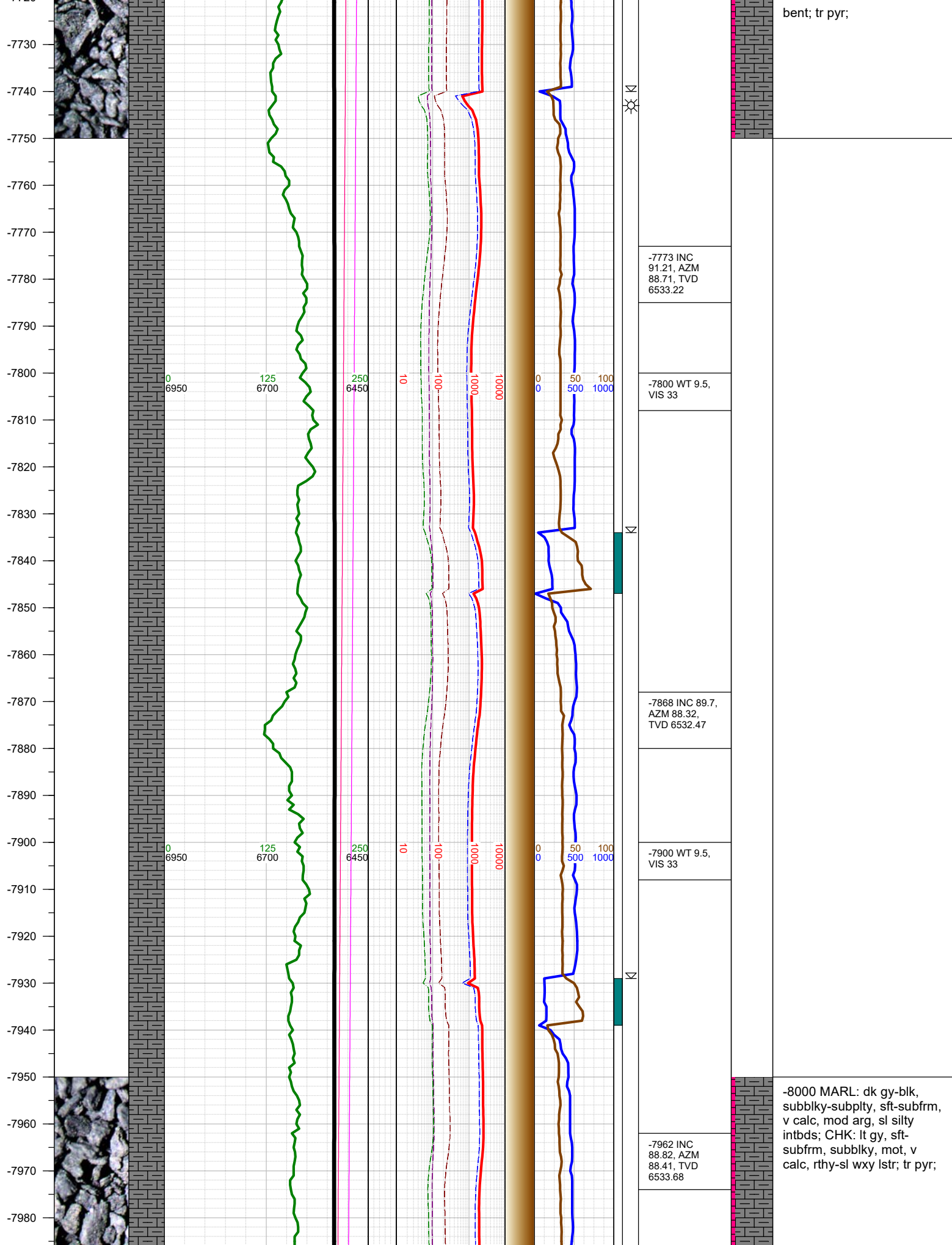
-7585 INC 90.1,
AZM 89.11,
TVD 6535.12

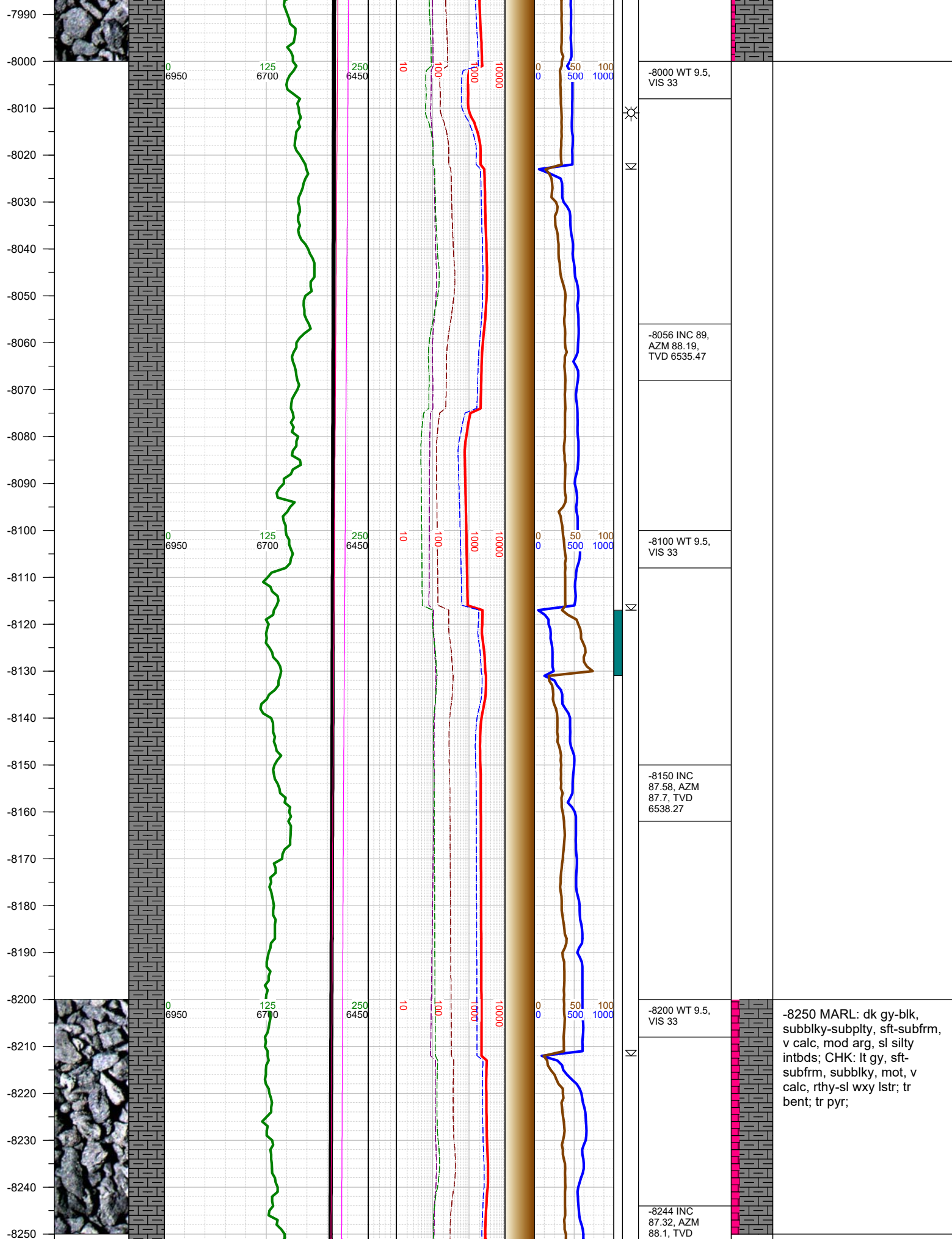
-7600 WT 9.25,
VIS 32

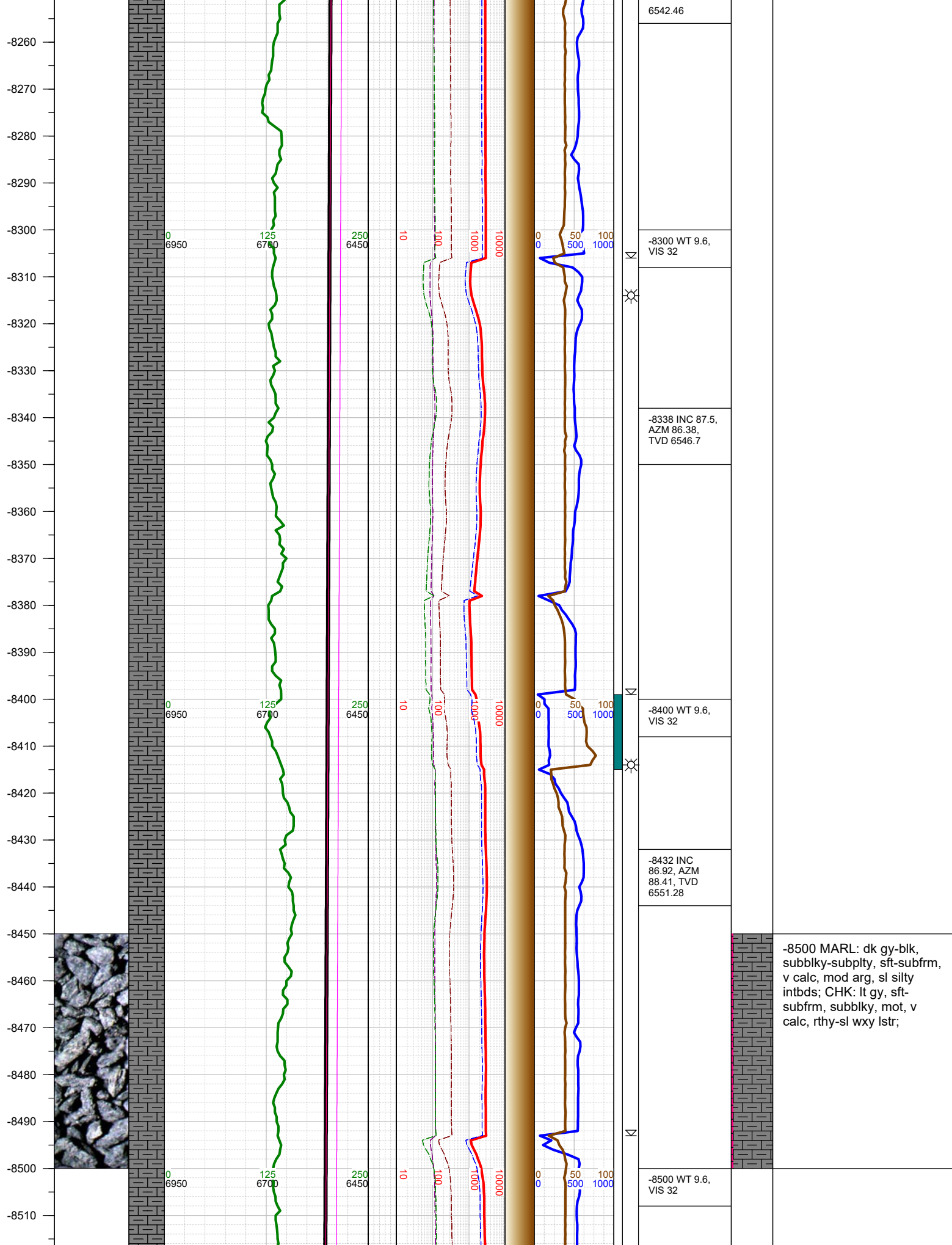
-7679 INC 90.5,
AZM 88.89,
TVD 6534.62

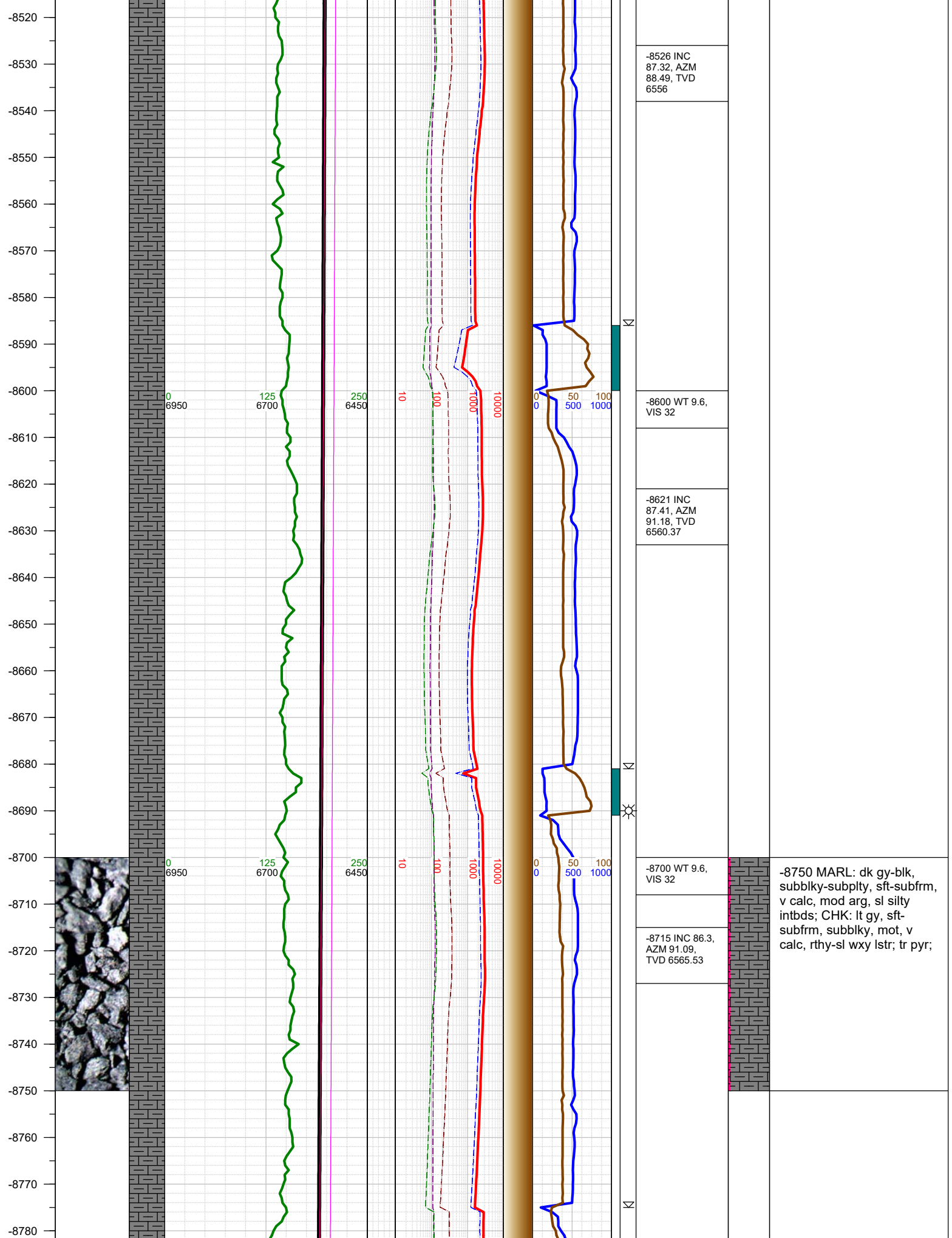
-7700 WT 9.25,
VIS 32

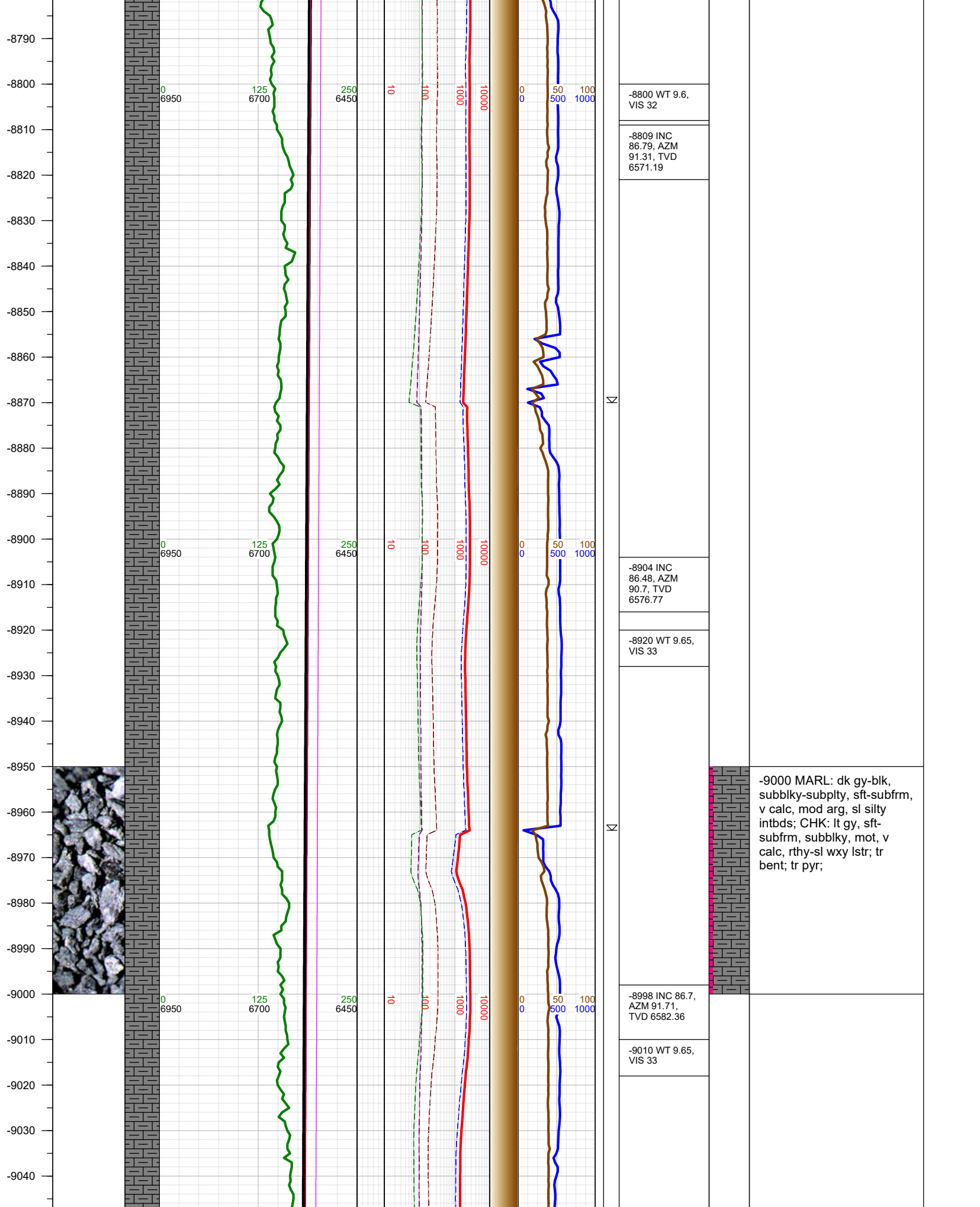
-7750 MARL: dk gy-blk,
subblky-subply, sft-subfrm,
v calc, mod arg, sl silty
intbds; CHK: lt gy, sft-
subfrm, subblky, mot, v
calc, rthy-sl wxy lstr, tr

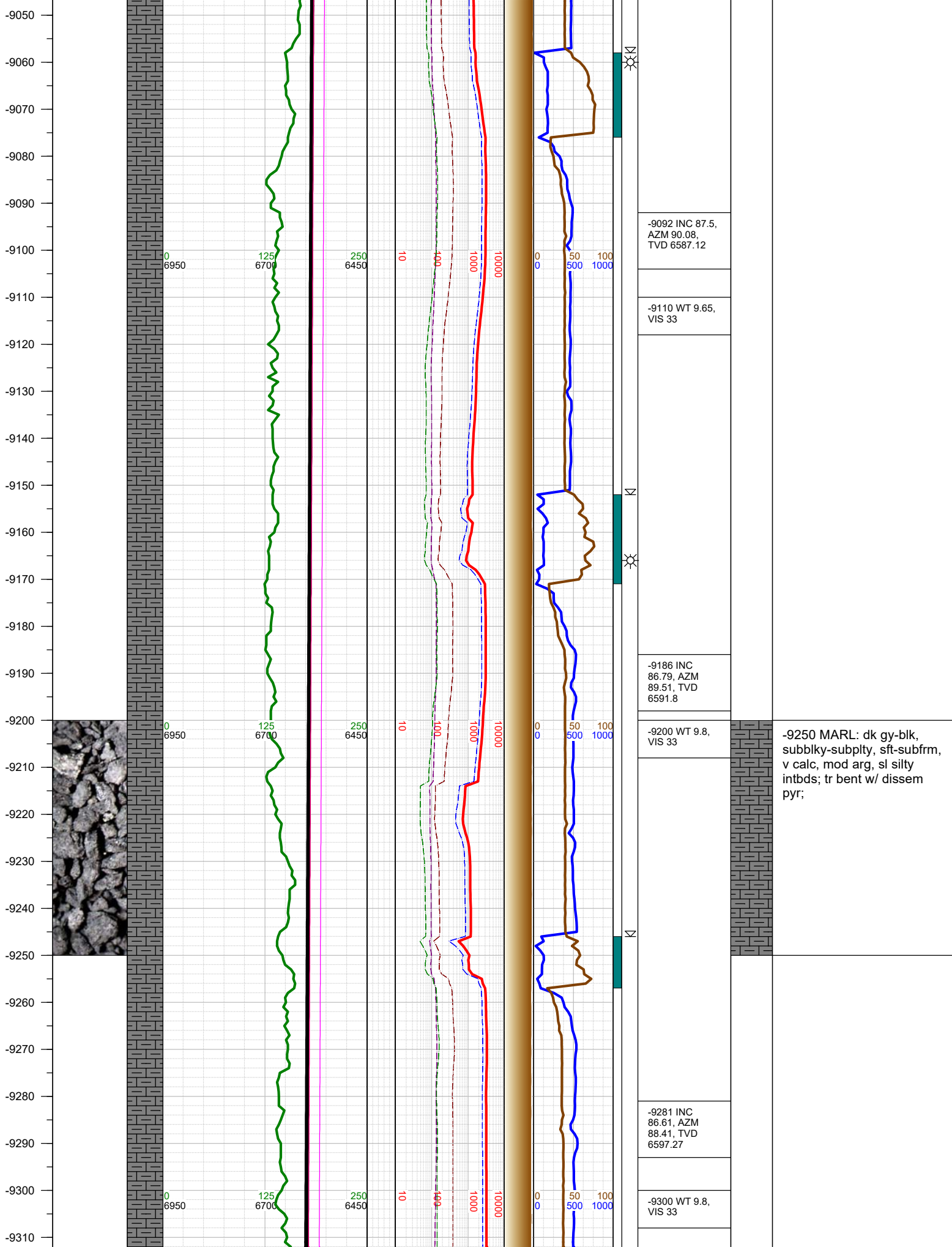


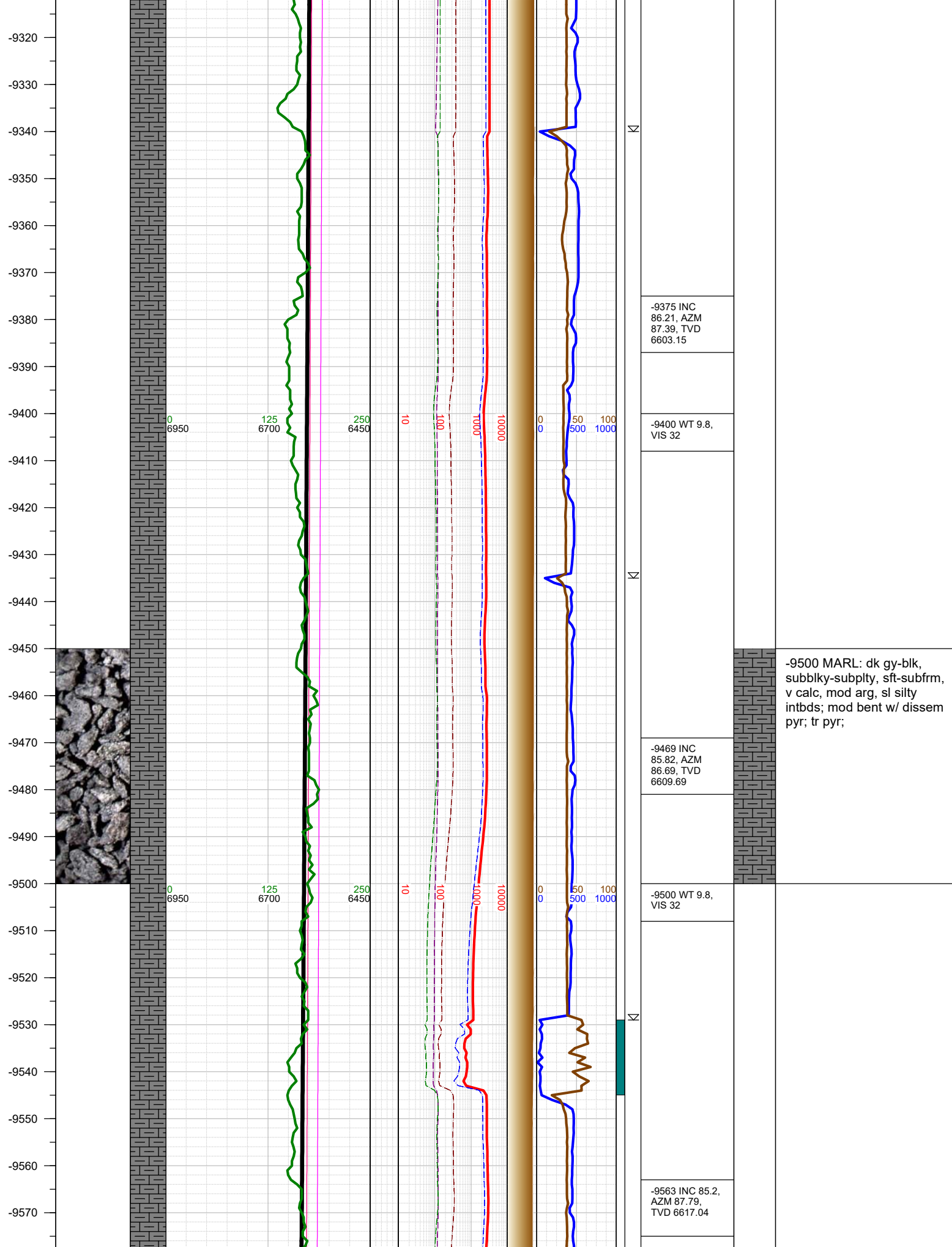


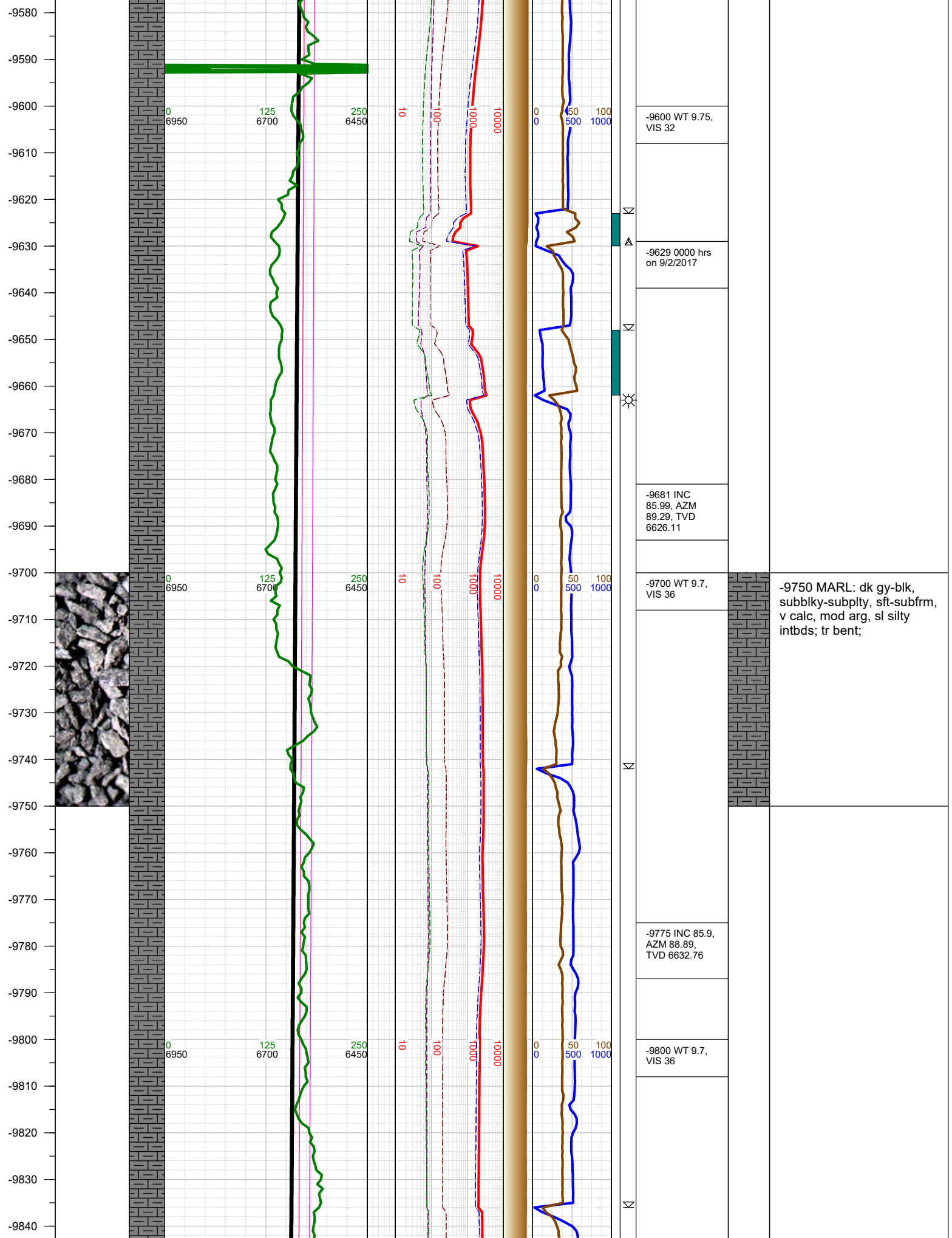


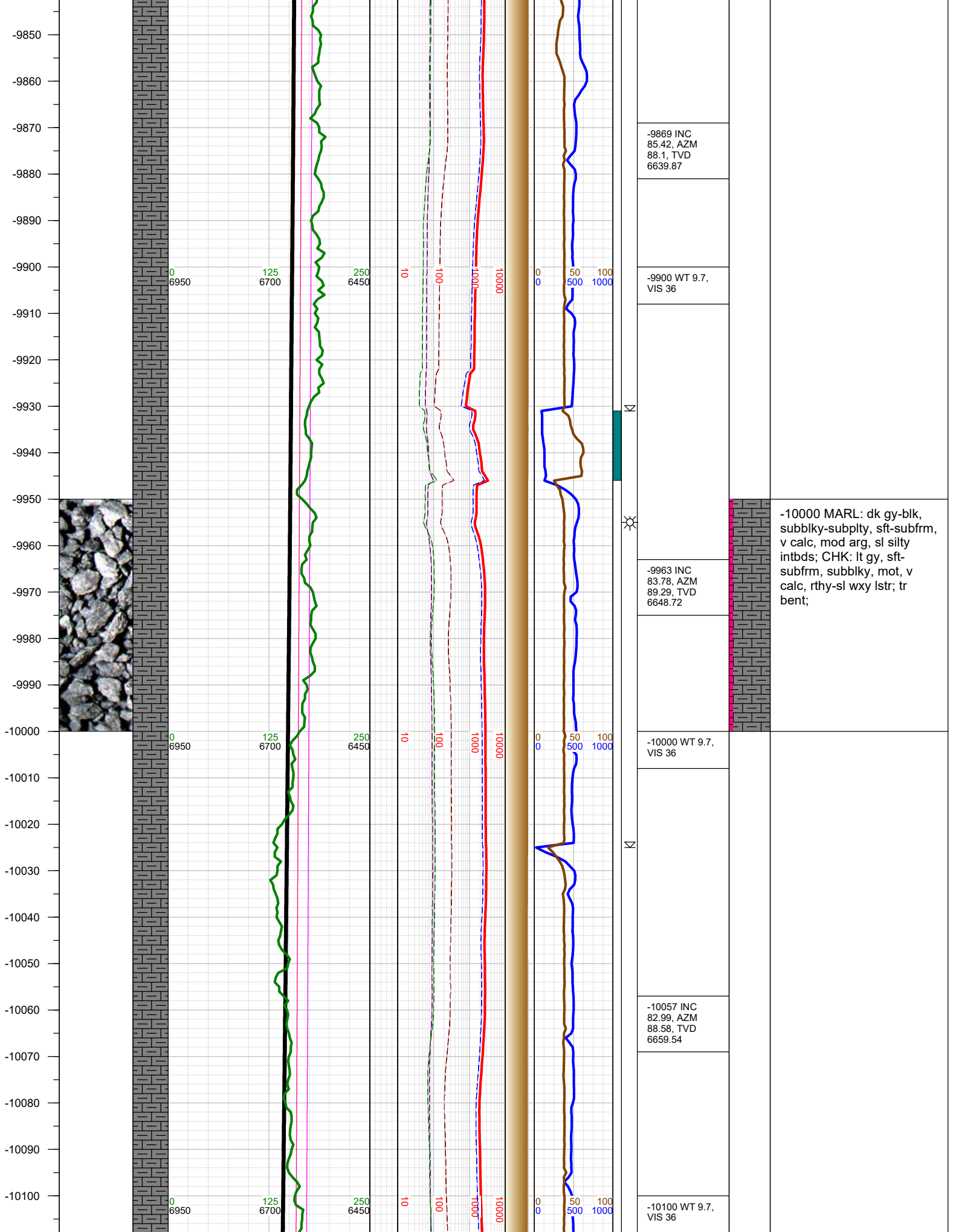


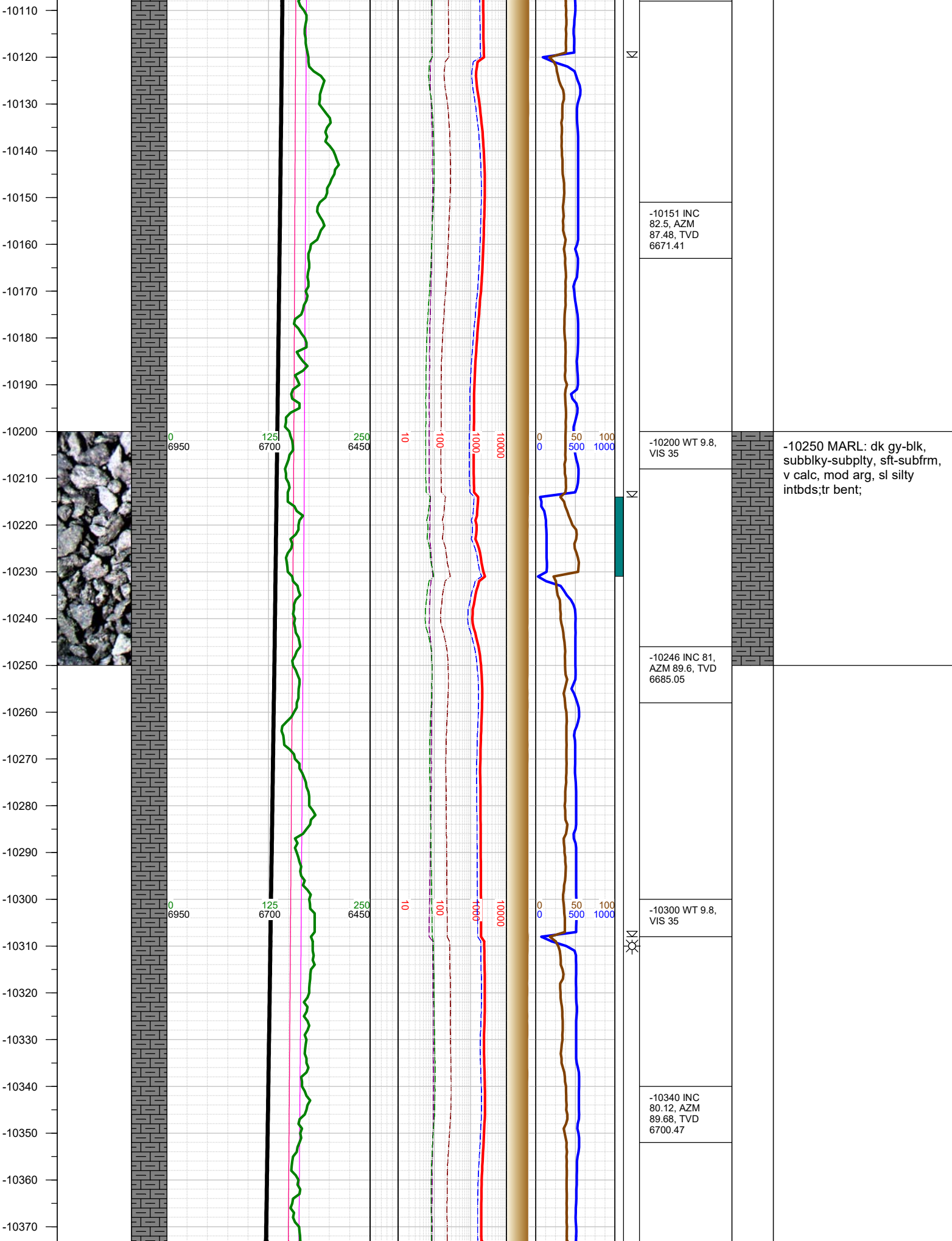


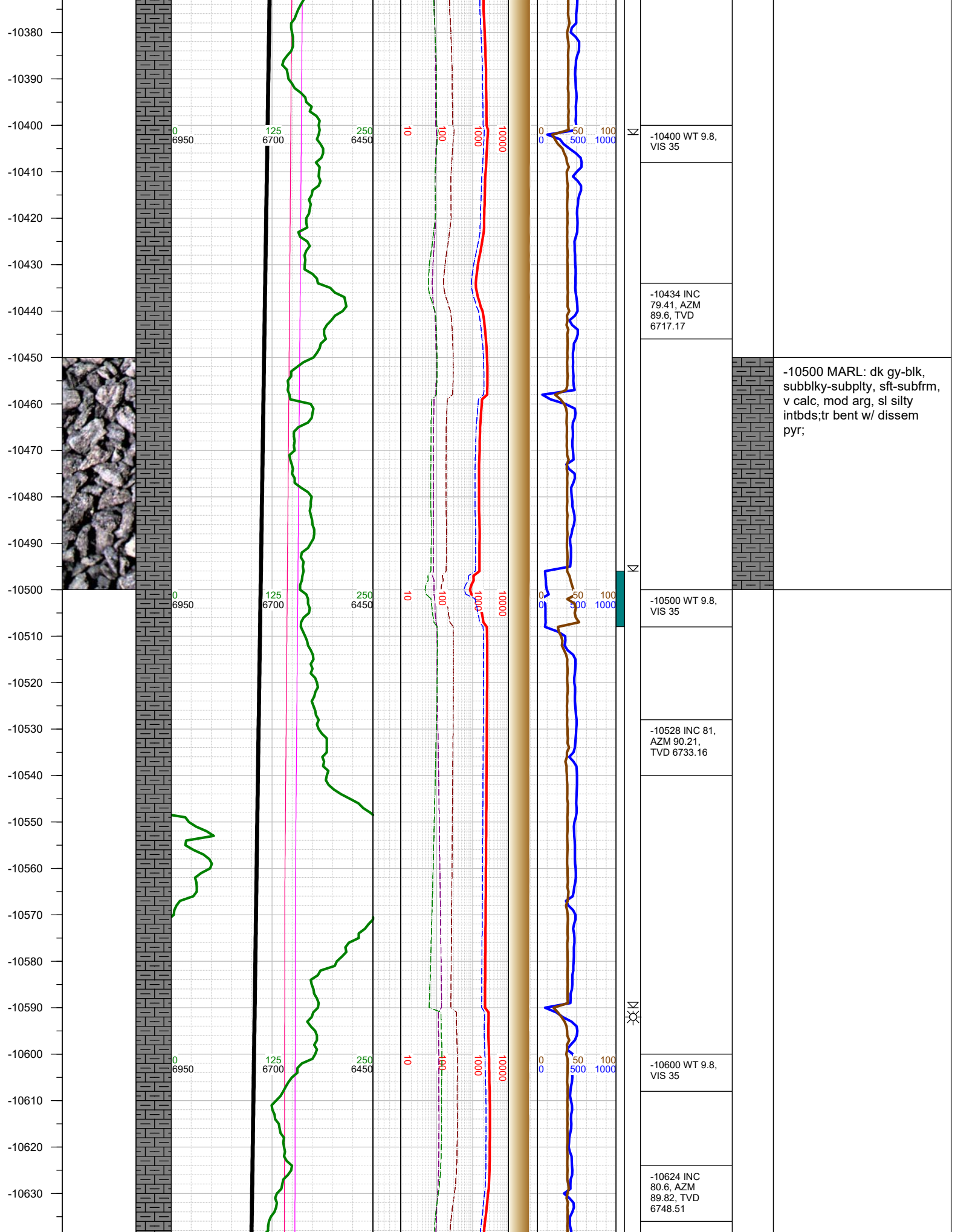


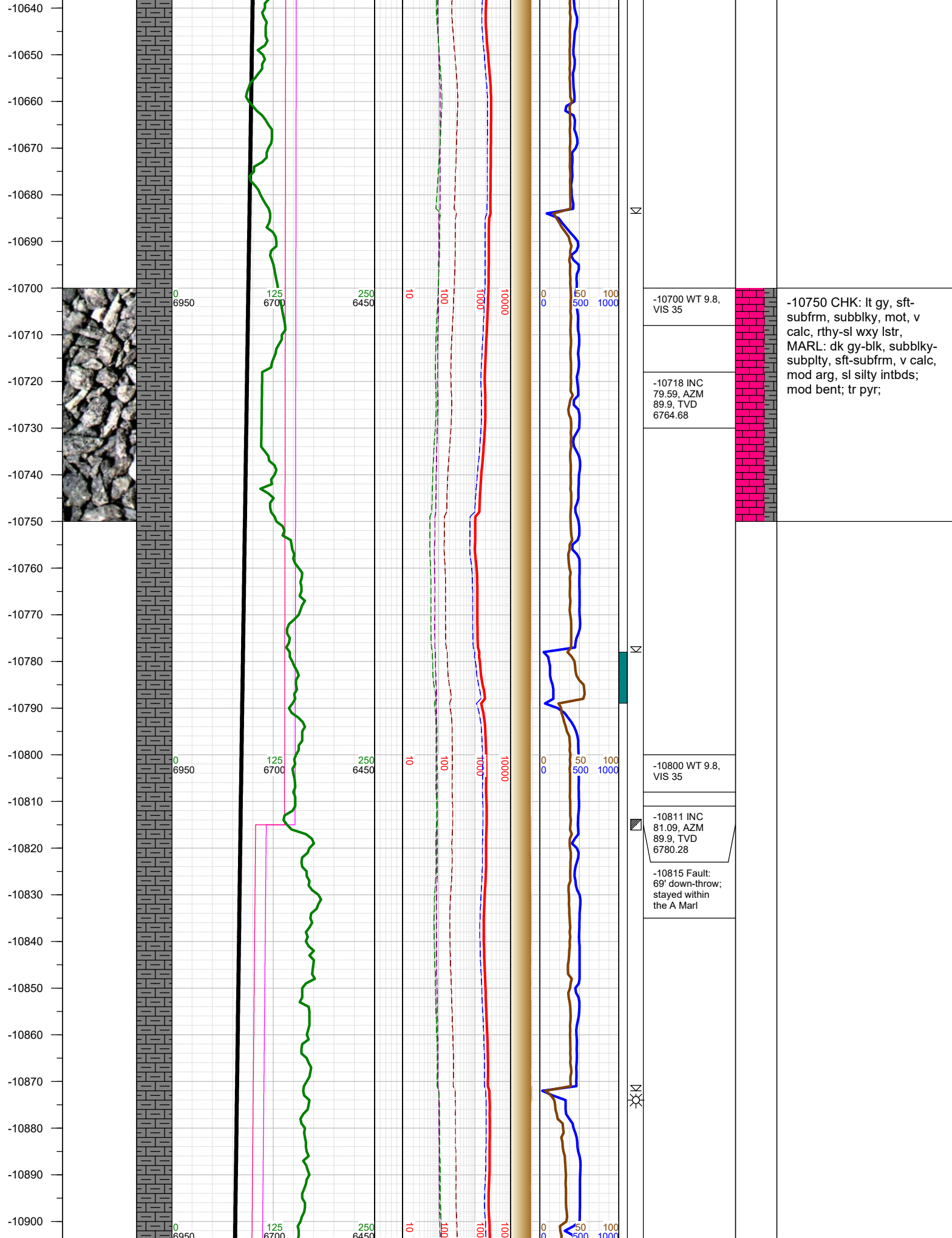




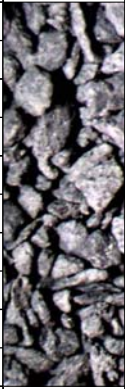








-10910
-10920
-10930
-10940
-10950
-10960
-10970
-10980
-10990
-11000
-11010
-11020
-11030
-11040
-11050
-11060
-11070
-11080
-11090
-11100
-11110
-11120
-11130
-11140
-11150
-11160



0
6950

125
6700

250
6450

10

100

1000

10000

0
0

50

100
1000

Σ

Σ

Σ

-10906 INC
81.4, AZM 89.6,
TVD 6794.74

-10920 WT 9.9,
VIS 35

-11001 INC
81.4, AZM 87.7,
TVD 6808.94

-11020 WT 9.9,
VIS 35

-11094 INC
80.6, AZM
88.49, TVD
6823.49

-11110 WT 9.9,
VIS 35

-11000 MARL: dk gy-blk,
subblky-subplty, sft-subfrm,
v calc, mod arg, sl silty
intbds; CHK: lt gy, sft-
subfrm, subblky, mot, v
calc, rthy-sl wxy lstr; tr foss
frags; tr bent; tr pyr;

-11170
-11180
-11190
-11200
-11210
-11220
-11230
-11240
-11250
-11260
-11270
-11280
-11290
-11300
-11310
-11320
-11330
-11340
-11350
-11360
-11370
-11380
-11390
-11400
-11410
-11420
-11430



0
6950

125
6700

250
6450

10

100

1000

10000

0
0

50
500

100
1000

-11189 INC
78.88, AZM
89.9, TVD
6840.41

-11210 WT 9.9,
VIS 35

-11284 INC
77.51, AZM
89.11, TVD
6859.85

-11300 WT 9.9,
VIS 35

-11400 WT 9.7,
VIS 35

-11250 MARL: dk gy-blk,
subblky-subplty, sft-subfrm,
v calc, mod arg, sl silty
intbds; CHK: lt gy, sft-
subfrm, subblky, mot, v
calc, rthy-sl wxy lstr;

