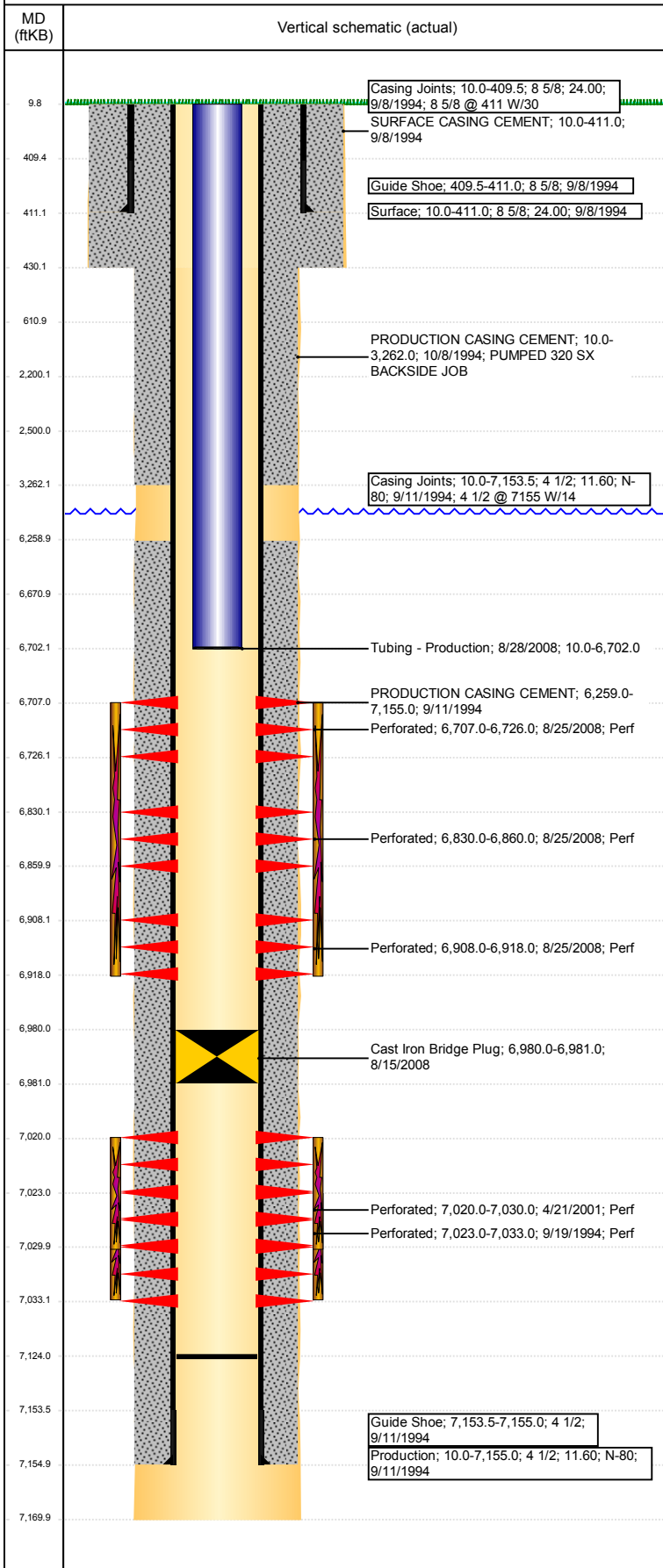


**Well Name: WESTERN SUGAR 04-43**

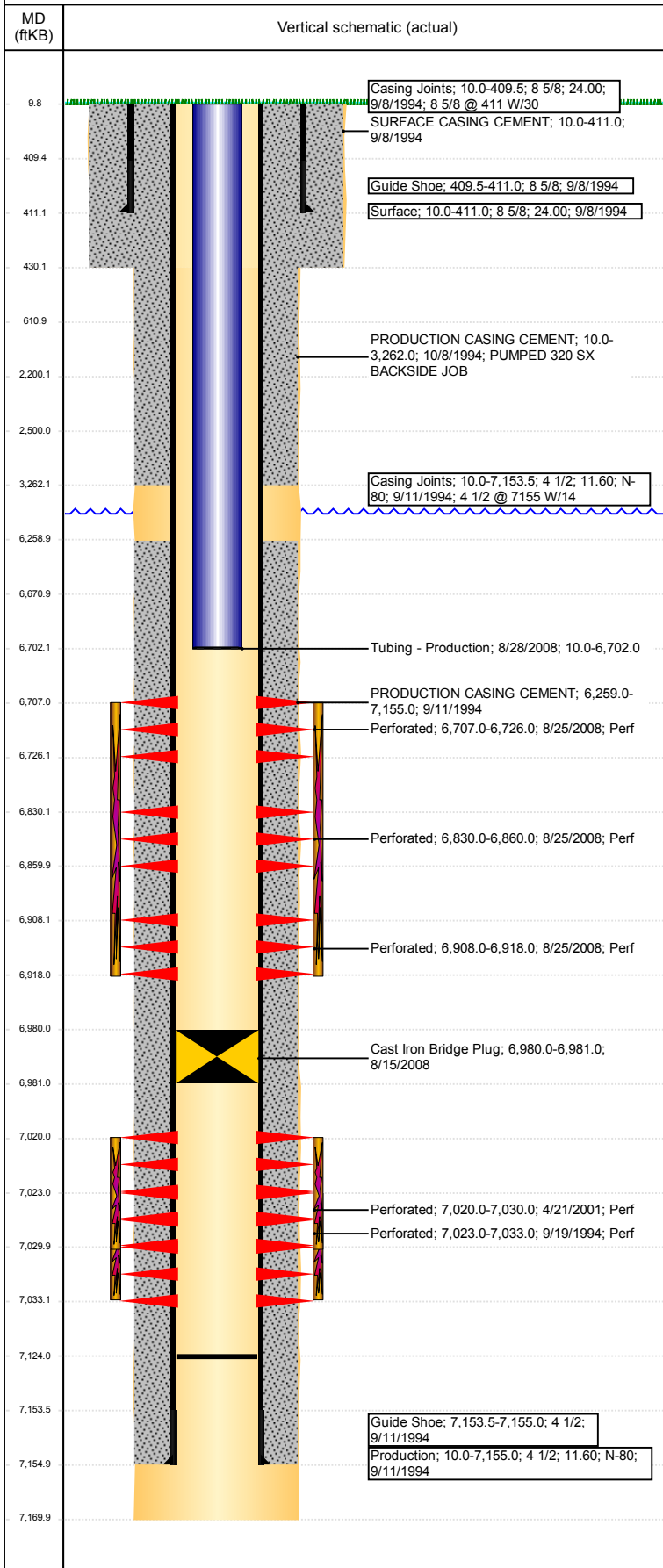
VERTICAL - ORIGINAL HOLE, 11/20/2017 5:51:33 PM



Well Header						
API 05-123-18519	Business Unit DJ BASIN		District 15	Well Config VERTICAL		
Original KB Elevation (ft) 4,829	KB - GL / MSL (ftKB) 10.00		Spud Date 9/7/1994		P & A Date	
Comment						
Directions To Well						
Congressional Location						
Quarter 3 SW	Quarter 4 SE	Section 4	Township 5	Twntshp N/S Dir N	Range 65	Range E/W Dir W
Bottom Hole Location						
North-South Distance (ft)		From N or S Line		East-West Distance (ft)		From E or W Line
Plug Back Total Depths						
Date	Depth (ftKB)	Method		Com		
9/11/1994	7,124.0	CASING TALLY				
Wellbore Sections						
Section Des		Size (in)		Act Top, MD (ftKB)		Act Btm, MD (ftKB)
SURFACE		12 1/4		10		430
PRODUCTION		7 7/8		430		7,170
Zone Statuses						
Zone Name	Status Date	Status	Fluid Type	Job	Prod Method	
CODELL	11/1/1994	PR	Oil	DRILLING/CO...	Flowing	
CODELL	5/7/2001	PR	Oil	RE-FRAC, 4/20...		
CODELL	8/15/2008	TA	Water	RECOMPLETI...		
CODELL	3/24/2010	PR				
CODELL	10/27/2016	SI	Oil	RECOMPLETI...	Flowing	
NIOBRARA	9/3/2008	PR				
NIOBRARA	3/24/2010	PR				
NIOBRARA	12/29/2014	PR				
NIOBRARA	1/19/2015	PR				
Casing Strings						
Surface, 411.0ftKB						
Casing Description Surface	Run Date 9/8/1994	OD (in) 8 5/8	Wt/Len (l... 24.00	Grade	Top, MD (ft... 10.0	MD (ftKB) 411.0
Production, 7,155.0ftKB						
Casing Description Production	Run Date 9/11/1994	OD (in) 4 1/2	Wt/Len (l... 11.60	Grade N-80	Top, MD (ft... 10.0	MD (ftKB) 7,155.0
Cement						
Description SURFACE CASING CEMENT				Top Depth (ftKB) 10.0		Bottom Depth (ftKB) 411.0
Description PRODUCTION CASING CEMENT				Top Depth (ftKB) 6,259.0		Bottom Depth (ftKB) 7,155.0
Description PRODUCTION CASING CEMENT				Top Depth (ftKB) 10.0		Bottom Depth (ftKB) 3,262.0
Description Balance Plug				Top Depth (ftKB) 2,200.0		Bottom Depth (ftKB) 2,500.0
Description Shoe Plug				Top Depth (ftKB) 10.0		Bottom Depth (ftKB) 611.0
Tubing Strings						
Tubing Description Tubing - Production	Run Date 8/28/2008	String... 2 3/8	ID (in) 2.00	Wt (lb/ft) 4.70	Grade J-55	Len (ft) 6,692.00
Tubing Components						
Item Des	OD (in)	Wt (lb/ft)	Grade	Jts	Len (ft)	Btm (ftKB)
Tubing	2 3/8	4.70	J-55	225	6,690.50	6,700.5
Seat Nipple	2 3/8			1	1.00	6,701.5
Mule Shoe	2 3/8			1	0.50	6,702.0
Other In Hole						
Run Date	Des			OD (in)	Top (ftKB)	Btm (ftKB)
8/15/2008	Cast Iron Bridge Plug w/ 2 SX Cement			3.99	6,671.0	6,702.0
	Cast Iron Bridge Plug			3.99	6,980.0	6,981.0
Logs						
Date	Type				Top, MD (ftKB)	Btm, MD (ftKB)
9/11/1994	COMPENSATED DENSITY				6,000.0	7,172.0
9/11/1994	INDUCTION				411.0	7,190.0

**Well Name: WESTERN SUGAR 04-43**

VERTICAL - ORIGINAL HOLE, 11/20/2017 5:51:33 PM



Logs					
Date		Type		Top, MD (ftKB)	Btm, MD (ftKB)
9/19/1994		CEMENT BOND		6,130.0	7,102.0
Perforation Data					
Linked Zone	Bnch/St g	Sum of Entered Shot Total	Top (ftKB)	Btm (ftKB)	Date
NIOBRARA, ORIGINAL HOLE	A	38	6,707.00	6,726.00	8/25/2008
NIOBRARA, ORIGINAL HOLE	B	120	6,830.00	6,860.00	8/25/2008
NIOBRARA, ORIGINAL HOLE	C	40	6,908.00	6,918.00	8/25/2008
CODELL, ORIGINAL HOLE		40	7,020.00	7,030.00	4/21/2001
CODELL, ORIGINAL HOLE		40	7,023.00	7,033.00	9/19/1994
Total (Sum)		278			
Stimulation Intervals					
Start Date		Primary Job Type			
10/22/1994		DRILLING/COMPLETION - ORIGINAL			
Technical Result		Tech Result Details		Tech Result Note	
Comment					
Start Date		Primary Job Type			
4/25/2001		RE-FRAC			
Technical Result		Tech Result Details		Tech Result Note	
Comment					
Start Date		Primary Job Type			
8/26/2008		RECOMPLETION			
Technical Result		Tech Result Details		Tech Result Note	
Comment					