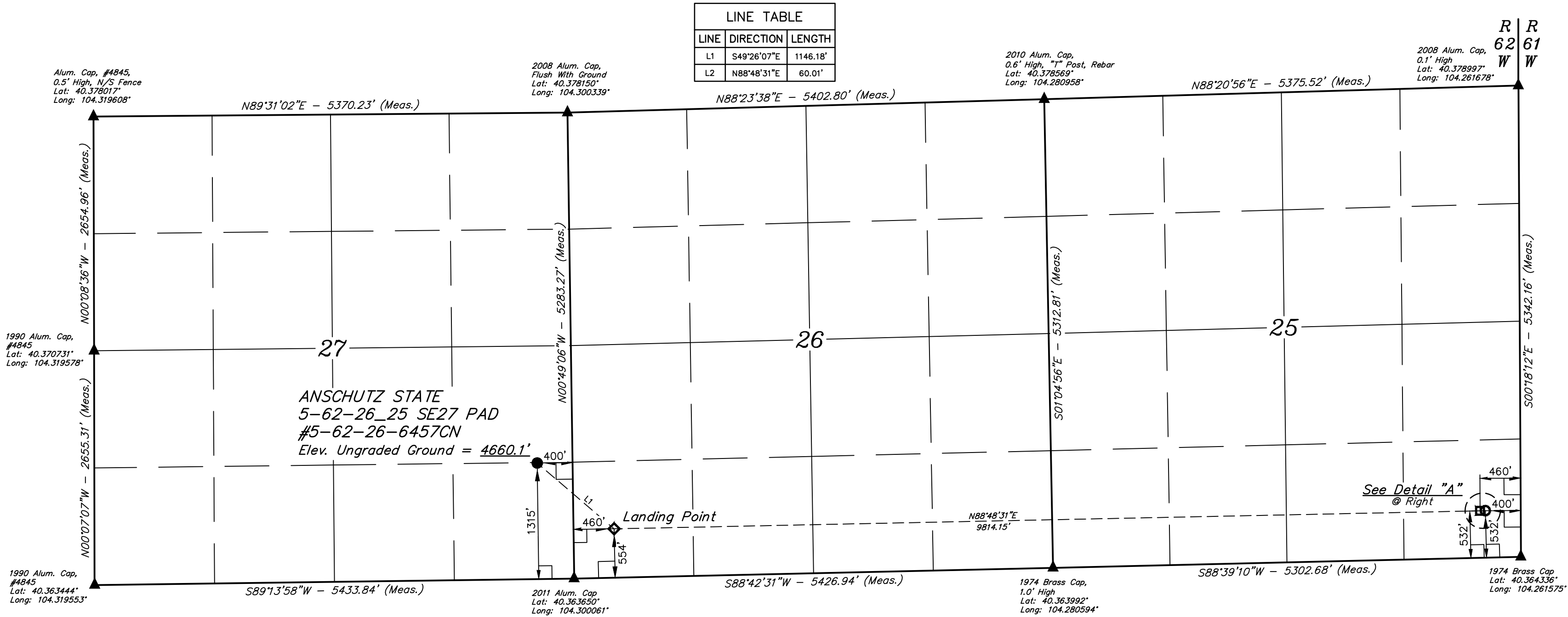
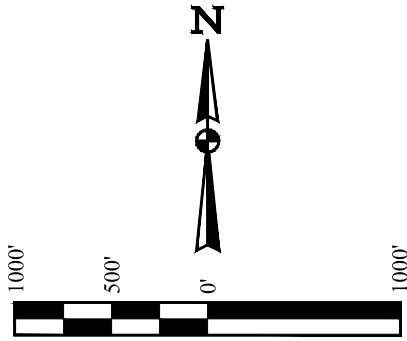


T5N, R62W, 6th P.M.

BILL BARRETT CORPORATION
ANSCHUTZ STATE 5-62-26 25 SE27 PAD #5-62-26-6457CN
SE 1/4 SE 1/4, SECTION 27, T5N, R62W, 6th P.M.
WELD COUNTY, COLORADO

BASIS OF BEARINGS
BASIS OF ELEVATION
SPOT ELEVATION LOCATED AT THE NORTHEAST CORNER
OF SECTION 24, T5N, R62W, 6th P.M. TAKEN FROM THE POINT OF
ROCKS, QUADRANGLE, COLORADO, WELD COUNTY, 7.5 MINUTE
QUAD (TOPOGRAPHIC MAP) PUBLISHED BY THE UNITED STATES
DEPARTMENT OF THE INTERIOR, GEOLOGICAL SURVEY. SAID
ELEVATION IS MARKED AS BEING 4530 FEET.



LEGEND:

- 90° SYMBOL
- PROPOSED WELLHEAD.
- LANDING POINT.
- BOTTOM OF COMPLETED INTERVAL.
- TARGET BOTTOM HOLE TD.
- SECTION CORNERS LOCATED. (NAD 83)

NAD 83 (SURFACE LOCATION)	NAD 83 (LANDING POINT)	NAD 83 (BTM. OF COMPLETED INT.)	NAD 83 (TARGET BOTTOM HOLE TD)
LATITUDE = 40°22'02.08" (40.367244) LONGITUDE = 104°18'05.63" (104.301564)	LATITUDE = 40°21'54.72" (40.365200) LONGITUDE = 104°17'54.38" (104.298439)	LATITUDE = 40°21'56.76" (40.365767) LONGITUDE = 104°15'47.65" (104.262336)	LATITUDE = 40°21'56.77" (40.365769) LONGITUDE = 104°15'46.87" (104.263019)
NAD 27 (SURFACE LOCATION)	NAD 27 (LANDING POINT)	NAD 27 (BTM. OF COMPLETED INT.)	NAD 27 (TARGET BOTTOM HOLE TD)
LATITUDE = 40°22'02.15" (40.367264) LONGITUDE = 104°18'03.81" (104.301058)	LATITUDE = 40°21'54.79" (40.365219) LONGITUDE = 104°17'52.56" (104.297933)	LATITUDE = 40°21'56.83" (40.365786) LONGITUDE = 104°15'45.83" (104.262731)	LATITUDE = 40°21'56.84" (40.365789) LONGITUDE = 104°15'45.05" (104.262514)
STATE PLANE NAD 83 (CO. NORTH) N: 1378884.48 E: 3333927.85	STATE PLANE NAD 83 (CO. NORTH) N: 1378151.53 E: 3334808.66	STATE PLANE NAD 83 (CO. NORTH) N: 1378492.51 E: 3344614.33	STATE PLANE NAD 83 (CO. NORTH) N: 1378494.59 E: 3344674.28
STATE PLANE NAD 27 (CO. NORTH) N: 378886.38 E: 2334077.89	STATE PLANE NAD 27 (CO. NORTH) N: 378153.45 E: 2334958.71	STATE PLANE NAD 27 (CO. NORTH) N: 378494.44 E: 2344764.40	STATE PLANE NAD 27 (CO. NORTH) N: 378496.52 E: 2344824.35

CERTIFICATE OF REGISTRATION
THIS IS TO CERTIFY THAT THE ABOVE DESCRIBED SURVEY WAS MADE BY ME OR UNDER MY SUPERVISION AND THAT THE SAME ARE TRUE AND CORRECT TO THE BEST OF MY KNOWLEDGE AND BELIEF.

JARED CHRISTOPHER, Z.B.
REGISTERED LAND SURVEYOR
REGISTRATION NO. 28285
STATE OF COLORADO
08-24-17

UELTS, LLC
Corporate Office * 85 South 200 East
Vernal, UT 84078 * (435) 789-1017

SURVEYED BY JARED CHRISTOPHER, Z.B. 04-21-17 SCALE
DRAWN BY J.J. 08-24-17 1" = 1000'

WELL LOCATION PLAT