

**SandRidge Exploration & Production, LLC**

## BIGHORN CENTRAL FACILITY

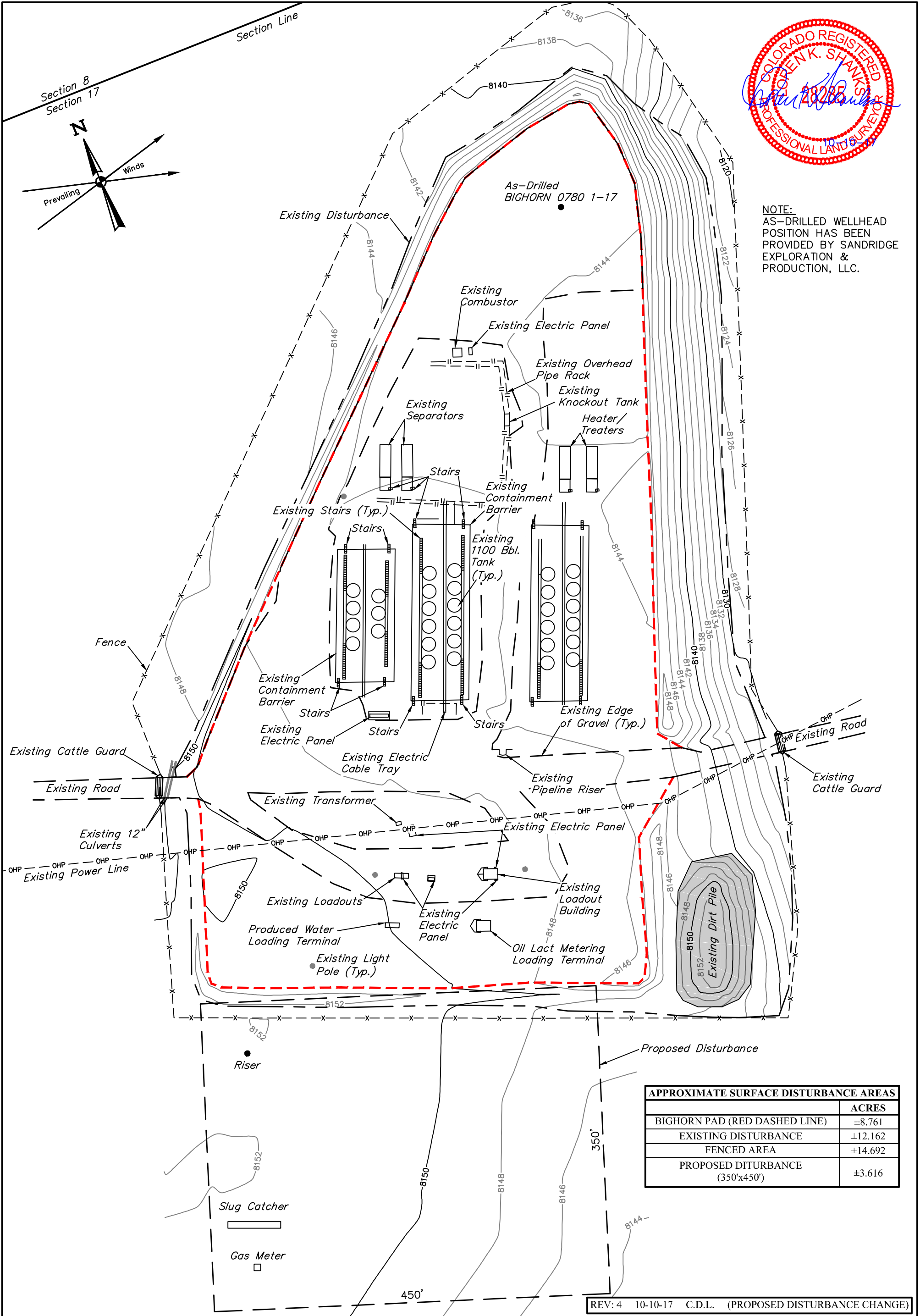
**SECTION 17, T7N, R80W, 6th P.M.**

## JACKSON COUNTY, COLORADO

DATE:

DESCRIPTION:

[illegible]



NOTES:  
• Contours shown at 2' intervals.

SandRidge Exploration & Production, LLC

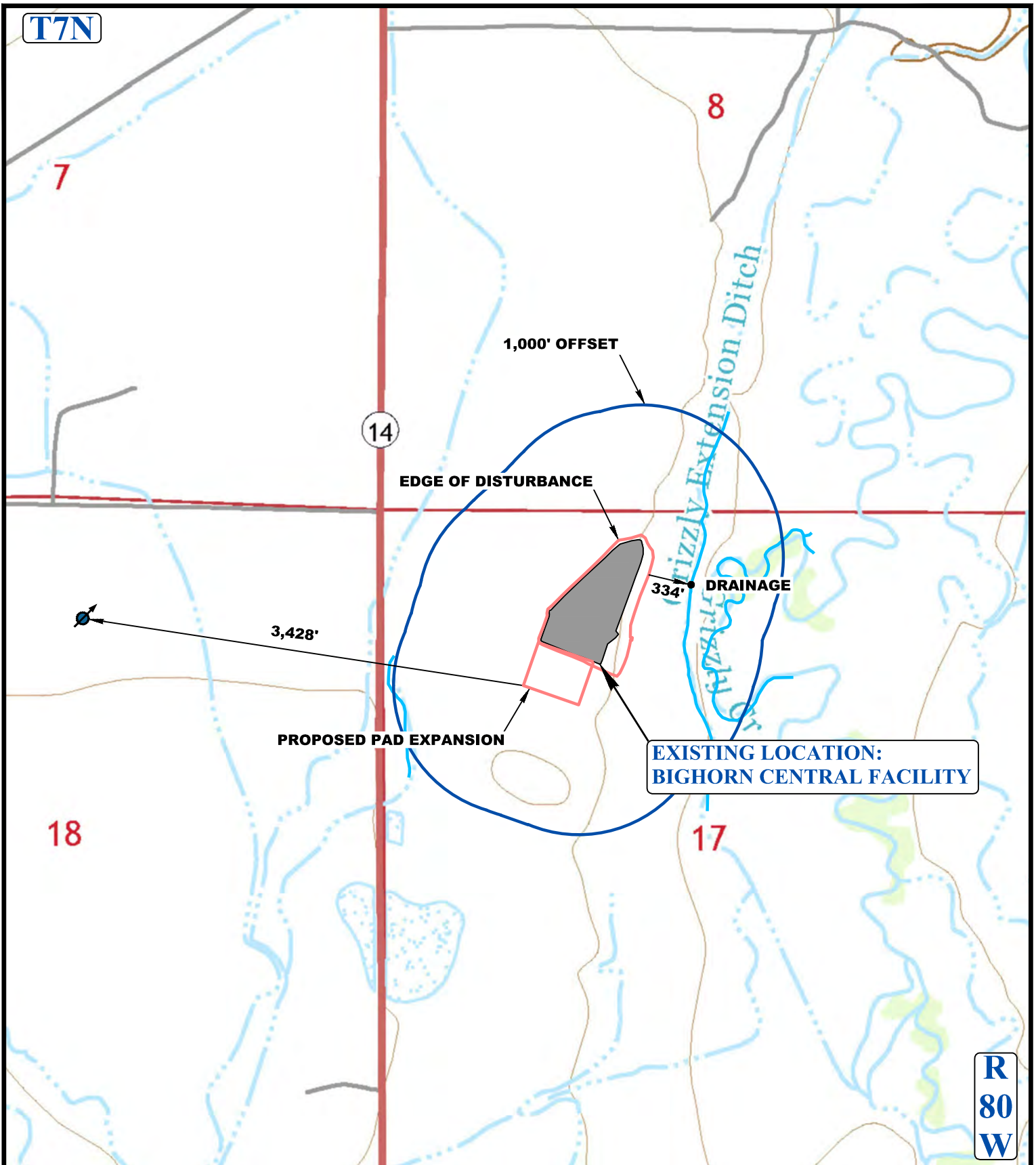
BIGHORN CENTRAL FACILITY  
NW 1/4, SECTION 17, T7N, R80W, 6th P.M.  
JACKSON COUNTY, COLORADO

SURVEYED BY	D.S., B.H.	11-03-16	SCALE
DRAWN BY	J.J.	11-07-16	1" = 100'
AS-BUILT SITE PLAN			FIGURE #1



UELS, LLC  
Corporate Office \* 85 South 200 East  
Vernal, UT 84078 \* (435) 789-1017

T7N



**LEGEND:**

- EXISTING DRAINAGE
- 1000' OFFSET BOUNDARY
- EDGE OF DISTURBANCE
- FLOOD PLAINS



UELS, LLC  
Corporate Office \* 85 South 200 East  
Vernal, UT 84078 \* (435) 789-1017

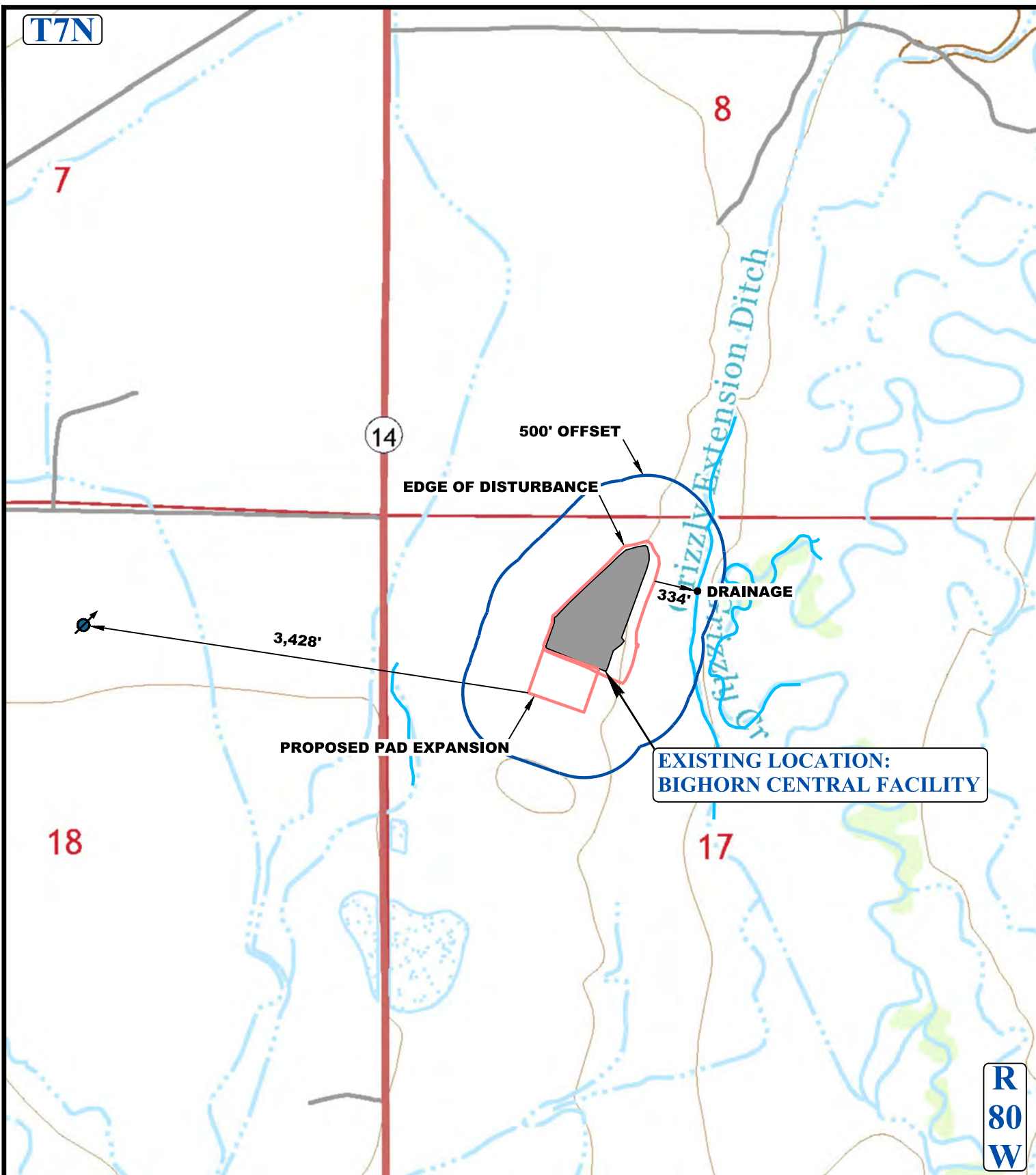


**Sandridge Exploration & Production, LLC**

**BIGHORN CENTRAL FACILITY**  
NW 1/4, SECTION 17, T7N, R80W, 6th P.M.  
JACKSON COUNTY, COLORADO

SURVEYED BY	D.S., B.H.	11-03-16	SCALE
DRAWN BY	Z.T.	11-02-17	1 : 6,000
HYDROLOGY MAP			TOPO W1

T7N



**LEGEND:**

- EXISTING DRAINAGE
- 1000' OFFSET BOUNDARY
- EDGE OF DISTURBANCE
- FLOOD PLAINS



UELS, LLC  
Corporate Office \* 85 South 200 East  
Vernal, UT 84078 \* (435) 789-1017



**Sandridge Exploration & Production, LLC**

**BIGHORN CENTRAL FACILITY**  
NW 1/4, SECTION 17, T7N, R80W, 6th P.M.  
JACKSON COUNTY, COLORADO

SURVEYED BY	D.S., B.H.	11-03-16	SCALE
DRAWN BY	Z.T.	11-02-17	1 : 6,000
HYDROLOGY MAP			TOPO W2