

Inspection Photos

11/15/2017

Operator: WIEPKING-FULLERTON ENERGY LLC -
96340

Location ID: 453027

Inspection Doc. Number: 682502822
Lincoln County, CO

Aaron Trujillo
NE Reclamation Specialist
COGCC

Inspection Photos

Operator: WIEPKING-FULLERTON ENERGY LLC - 96340

Location ID: 453027



Photo 1: Photo taken from the northeast corner of the location, facing south. Photo shows overview of the reclamation area.



Photo 2: Photo taken from the northeast corner of the location, facing west. Photo shows overview of the reclamation area.

Inspection Photos

Operator: WIEPKING-FULLERTON ENERGY LLC - 96340

Location ID: 453027



Photo 3: Photo taken from the location, facing west. Photo shows the start point for the disturbance transect.



Photo 4: Photo taken from the 50th point of the disturbance transect, facing north. Photo shows vegetation over the reclamation area.

Inspection Photos

Operator: WIEPKING-FULLERTON ENERGY LLC - 96340

Location ID: 453027



Photo 5: Photo taken from the 50th point of the disturbance transect, facing south. Photo shows vegetation over the reclamation area.



Photo 6: Photo taken from the 50th point of the disturbance transect. Photo shows vegetation over the reclamation area.

Inspection Photos

Operator: WIEPKING-FULLERTON ENERGY LLC - 96340

Location ID: 453027



Photo 7: Photo taken from the location, facing east. Photo shows the end point for the disturbance transect.



Photo 8: Photo taken from the reference area location, facing west. Photo shows the start point for the reference transect.

Inspection Photos

Operator: WIEPKING-FULLERTON ENERGY LLC - 96340

Location ID: 453027



Photo 9: Photo taken from the 50th point of the reference transect, facing north. Photo shows vegetation over the reference area.



Photo 10: Photo taken from the 50th point of the reference transect, facing south. Photo shows vegetation over the reference area.

Inspection Photos

Operator: WIEPKING-FULLERTON ENERGY LLC - 96340

Location ID: 453027



Photo 11: Photo taken from the 50th point of the reference transect. Photo shows vegetation over the reference area.

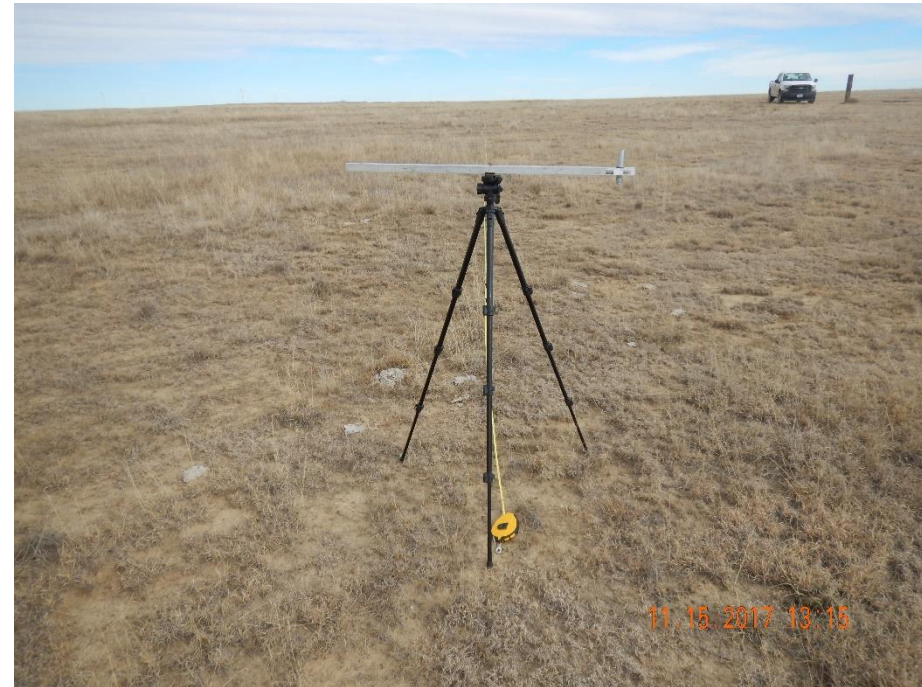


Photo 12: Photo taken from the reference area, facing east. Photo shows the end point for the reference transect.

Inspection Photos

Operator: WIEPKING-FULLERTON ENERGY LLC - 96340

Location ID: 453027



Photo 13: Photo taken from the east of the location, facing west. Photo shows access road has not been reclaimed in accordance to COGCC 1000 series reclamation rules and requirements.



Photo 14: Photo taken from the access road, facing south. Photo shows access road has not been reclaimed in accordance to COGCC 1000 series reclamation rules and requirements.

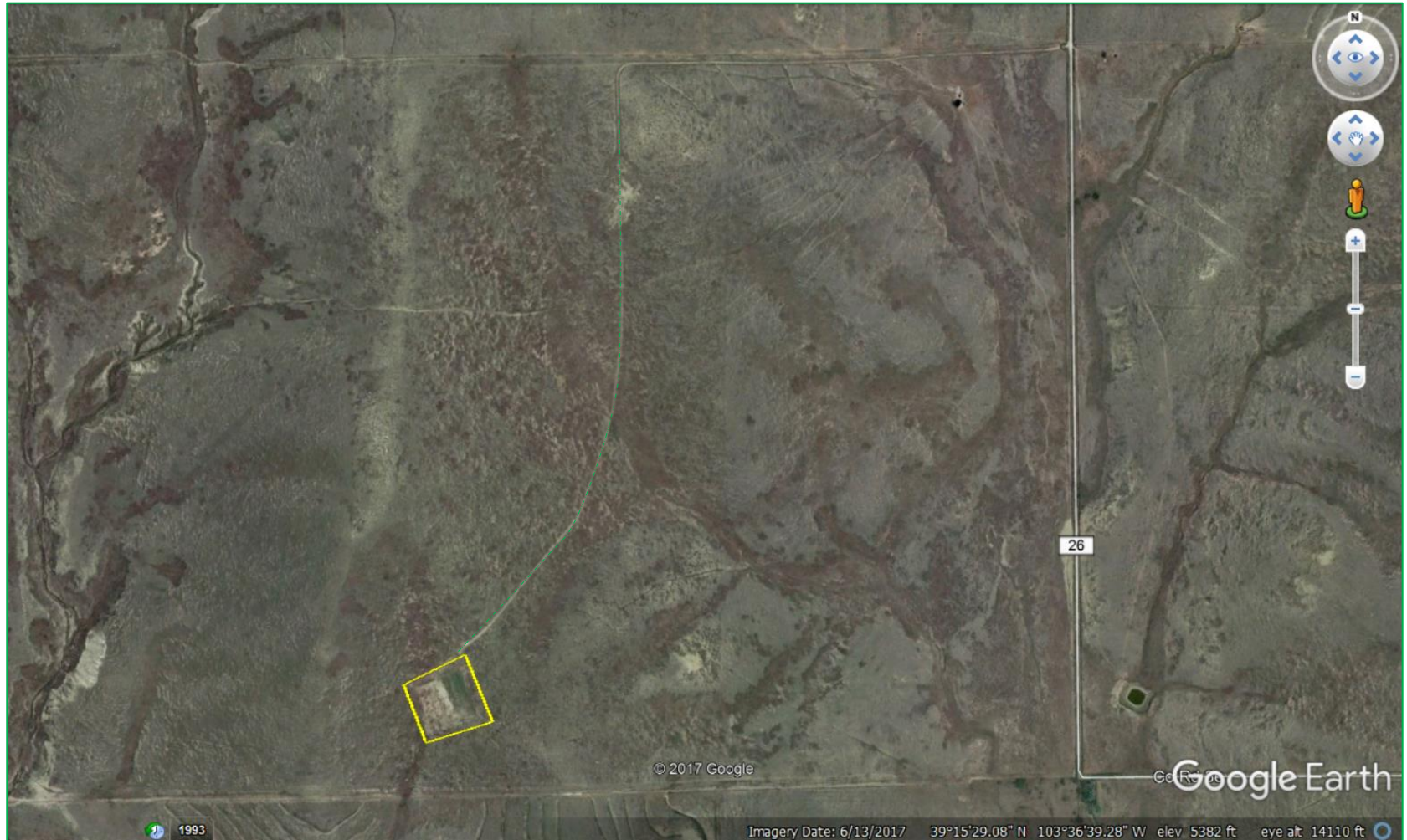


Photo 15: Current aerial imager (6/16/2017). Photo shows area of the well location (yellow) and the access road (green). ~0.87 miles of access road has not been reclaimed per 1000 series reclamation requirements.

Inspection Photos
Operator: WIEPKING-FULLERTON ENERGY LLC - 96340
Location ID: 453027



Photo 16: 2012 Aerial imagery. Well was SPUD 2014. Photo shows access road had not been pre-existing.