

# Inspection Photos

11/14/2017

Operator: NOBLE ENERGY INC - 100322

Location ID: 323052

Inspection Doc. Number: 682502813

Weld County, CO

Aaron Trujillo  
NE Reclamation Specialist  
COGCC

Inspection Photos  
Operator:NOBLE ENERGY INC - 100322  
Location ID: 323052

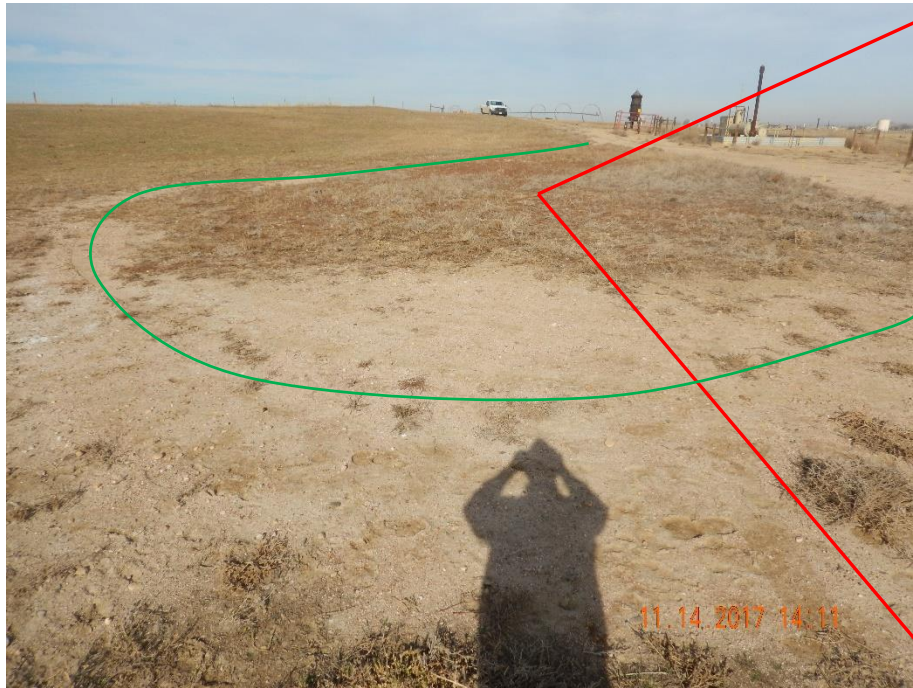


**Photo 1:** Photo taken from the access road, north of the location. Photo shows maintenance has not occurred on access road per CA's. Hat in photo for reference



**Photo 2:** Photo taken from the access road, north of the location. Photo shows maintenance has not occurred on access road per CA's. Ha





**Photo 3:** Photo taken the south end of the location, facing north. Photo shows access road (green) and well location has not had reclamation activities conducted per CA's. Adjacent reference area is perennial alfalfa.



**Photo 4:** Photo taken from the well location. Photo shows well site has not been returned to its designated final land use (reference area alfalfa). Vegetation seen here predominantly undesirable weedy plant species such as kochia. Photo also shows gravel remains at well site.



Inspection Photos  
Operator:NOBLE ENERGY INC - 100322  
Location ID: 323052



**Photo 5:** Photo taken from the battery location, facing west. Photo shows erosion degradation has not been repaired or stabilized per corrective actions. 6 foot measuring stick for reference.



**Photo 6:** Photo taken from the battery location, facing north. See comments under photo 5.





**Photo 7:** Photo taken from the battery location, facing south. See comments under photo 5.