

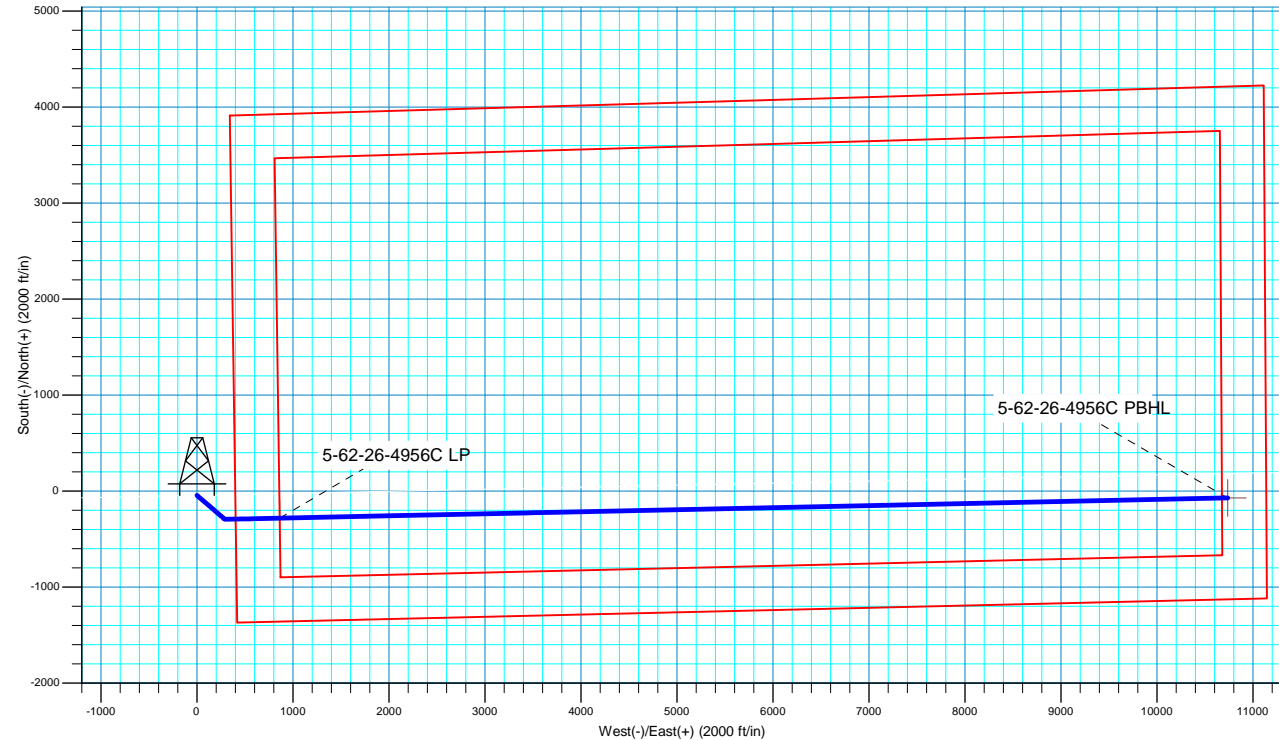
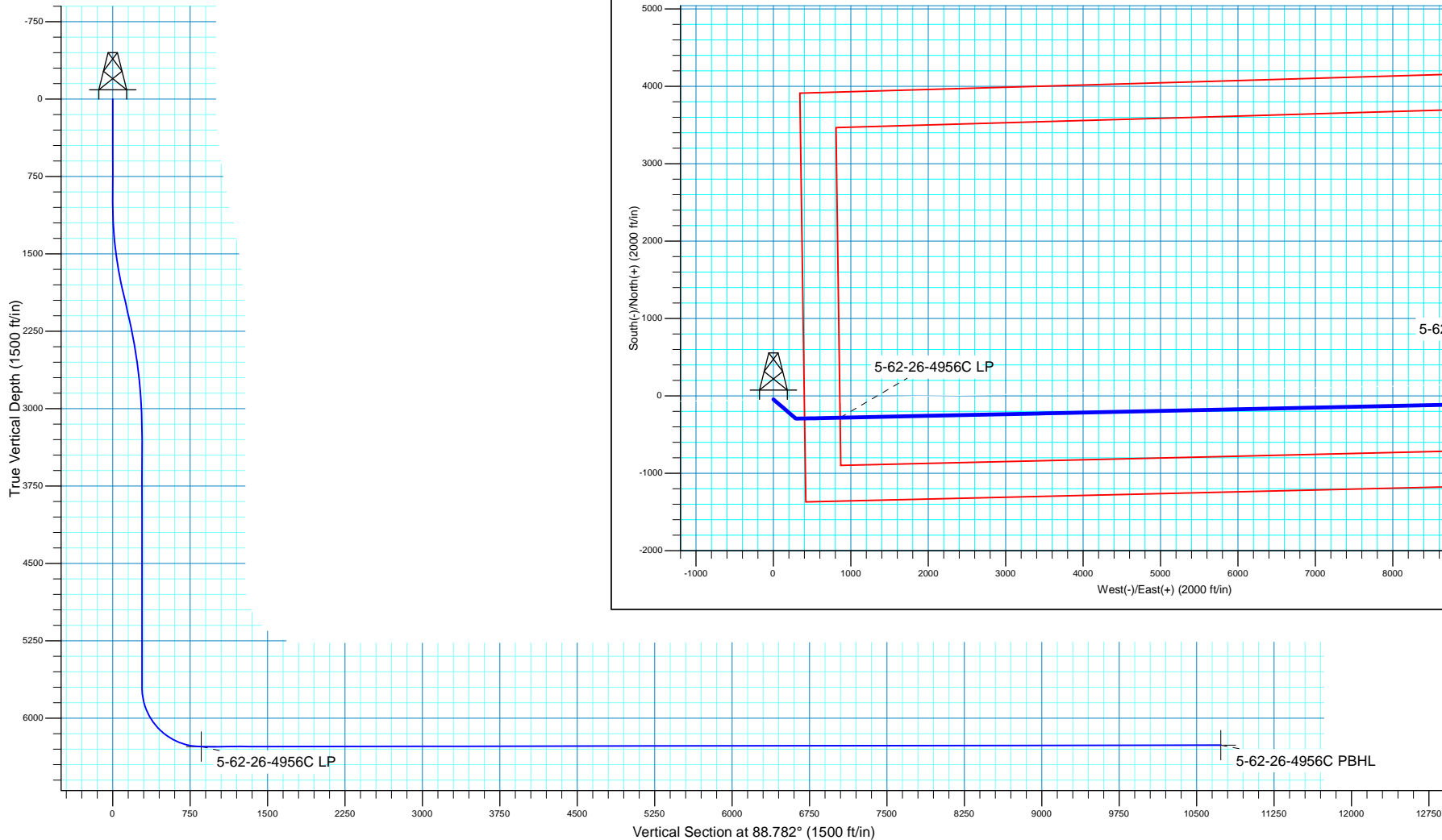


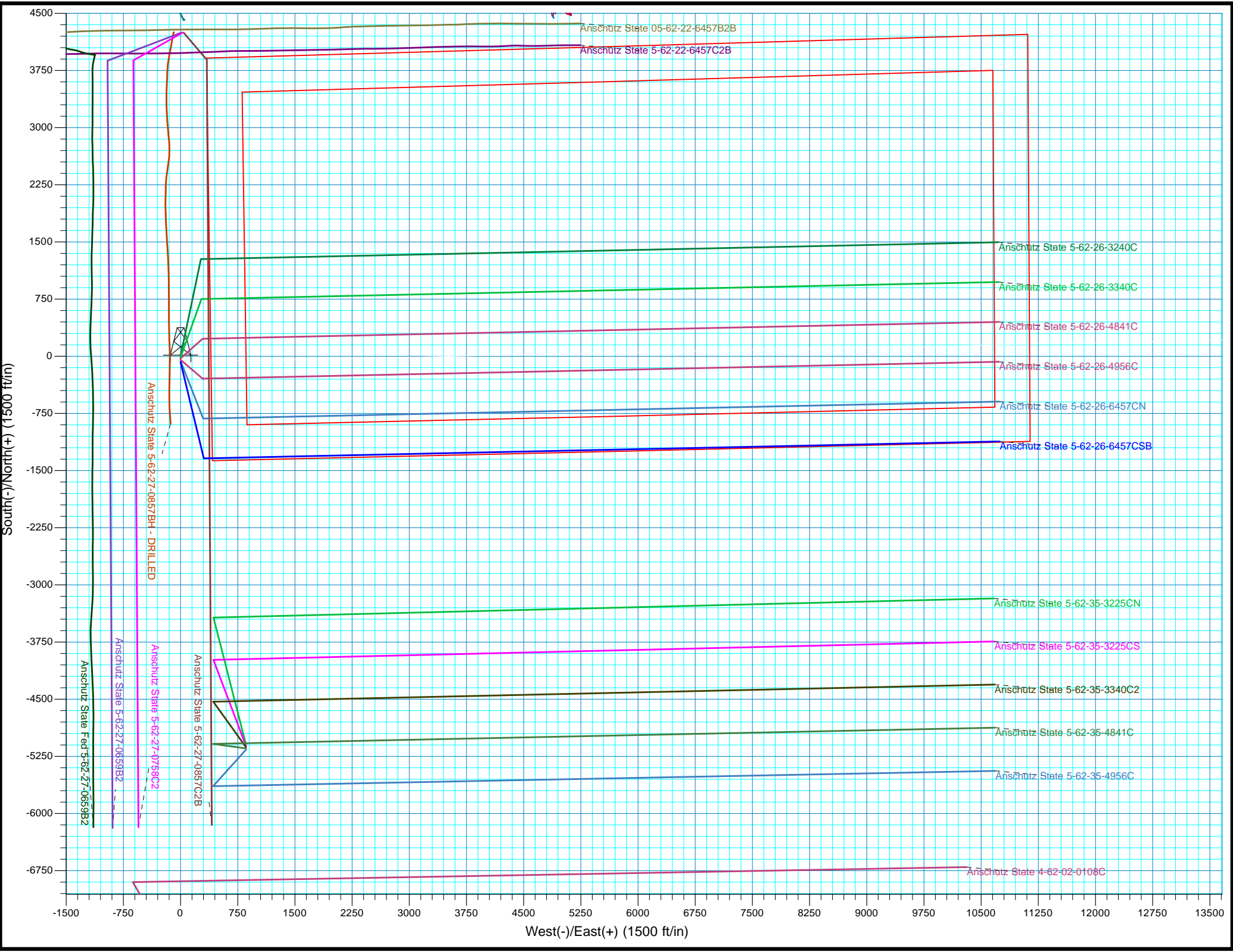
SECTION DETAILS

MD	Inc	Azi	TVD	+N/-S	+E/-W	Dleg	TFace	VSect
0.00	0.00	0.000	0.00	-44.47	0.84	0.00	0.00	0.00
1000.00	0.00	0.000	1000.00	-44.47	0.84	0.00	0.00	0.00
1852.35	17.05	130.711	1839.83	-126.56	96.24	2.00	130.71	93.64
2152.59	17.05	130.711	2126.88	-183.97	162.96	0.00	0.00	159.12
3289.05	0.00	0.000	3246.65	-293.43	290.17	1.50	180.00	283.98
5744.44	0.00	0.000	5702.04	-293.43	290.17	0.00	0.00	283.98
6645.26	90.08	88.782	6275.00	-281.23	863.81	10.00	88.78	857.75
16521.58	90.08	88.782	6261.00	-71.25	10737.89	0.00	0.00	10734.06

WELL DETAILS: Anschutz State 5-62-26-4956C

+N/-S	+E/-W	GL 4656.1' & KB 20' @ 4676.10ft	4656.10	Longitude
Northing	Easting	Latitude		
-44.47	0.84	1378899.34	3333927.74	40° 22' 2.229 N 104° 18' 5.630 W







Bill Barrett Corporation

Bill Barrett Corp.

Weld County, CO NAD 83

Anschutz State 5-62-26_25 SE27

Anschutz State 5-62-26-4956C

OH

Plan: Plan 1

Standard Planning Report

18 September, 2017



Scientific Drilling

www.scientificdrilling.com



Database:	Casper District	Local Co-ordinate Reference:	Site Anschutz State 5-62-26_25 SE27
Company:	Bill Barrett Corp.	TVD Reference:	GL 4656.1' & KB 20' @ 4676.10ft
Project:	Weld County, CO NAD 83	MD Reference:	GL 4656.1' & KB 20' @ 4676.10ft
Site:	Anschutz State 5-62-26_25 SE27	North Reference:	True
Well:	Anschutz State 5-62-26-4956C	Survey Calculation Method:	Minimum Curvature
Wellbore:	OH		
Design:	Plan 1		

Project	Weld County, CO NAD 83		
Map System:	US State Plane 1983	System Datum:	Mean Sea Level
Geo Datum:	North American Datum 1983		
Map Zone:	Colorado Northern Zone		

Site	Anschutz State 5-62-26_25 SE27, Site Center : Anschutz State 5-62-26-3240C			
Site Position:		Northing:	1,378,943.80 usft	Latitude: 40° 22' 2.669 N
From:	Lat/Long	Easting:	3,333,926.31 usft	Longitude: 104° 18' 5.641 W
Position Uncertainty:	0.00 ft	Slot Radius:	13.200 in	Grid Convergence: 0.77 °

Well	Anschutz State 5-62-26-4956C, 1330' FSL 400' FEL Sec 27 T5N R62W			
Well Position	+N/-S	-44.46 ft	Northing:	1,378,899.35 usft
	+E/-W	0.84 ft	Easting:	3,333,927.74 usft
Position Uncertainty		0.00 ft	Wellhead Elevation:	0.00 ft
			Ground Level:	4,656.10 ft

Wellbore	OH				
Magnetics	Model Name	Sample Date	Declination (°)	Dip Angle (°)	Field Strength (nT)
	HDGM	9/18/2017	8.20	67.02	52,306

Design	Plan 1			
Audit Notes:				
Version:	Phase:	PLAN	Tie On Depth:	0.00
Vertical Section:	Depth From (TVD) (ft)	+N/-S (ft)	+E/-W (ft)	Direction (°)
	0.00	-44.46	0.84	88.782

Plan Sections										
Measured Depth (ft)	Inclination (°)	Azimuth (°)	Vertical Depth (ft)	+N/-S (ft)	+E/-W (ft)	Dogleg Rate (°/100ft)	Build Rate (°/100ft)	Turn Rate (°/100ft)	TFO (°)	Target
0.00	0.00	0.000	0.00	-44.46	0.84	0.00	0.00	0.00	0.00	
1,000.00	0.00	0.000	1,000.00	-44.46	0.84	0.00	0.00	0.00	0.00	
1,852.35	17.05	130.711	1,839.83	-126.56	96.24	2.00	2.00	0.00	130.71	
2,152.59	17.05	130.711	2,126.88	-183.97	162.96	0.00	0.00	0.00	0.00	
3,289.05	0.00	0.000	3,246.65	-293.43	290.17	1.50	-1.50	0.00	180.00	
5,744.44	0.00	0.000	5,702.04	-293.43	290.17	0.00	0.00	0.00	0.00	
6,645.26	90.08	88.782	6,275.00	-281.23	863.81	10.00	10.00	9.86	88.78	
16,521.58	90.08	88.782	6,261.00	-71.25	10,737.89	0.00	0.00	0.00	0.00	5-62-26-4956C PBHL

Database:	Casper District	Local Co-ordinate Reference:	Site Anschutz State 5-62-26_25 SE27
Company:	Bill Barrett Corp.	TVD Reference:	GL 4656.1' & KB 20' @ 4676.10ft
Project:	Weld County, CO NAD 83	MD Reference:	GL 4656.1' & KB 20' @ 4676.10ft
Site:	Anschutz State 5-62-26_25 SE27	North Reference:	True
Well:	Anschutz State 5-62-26-4956C	Survey Calculation Method:	Minimum Curvature
Wellbore:	OH		
Design:	Plan 1		

Planned Survey									
Measured Depth (ft)	Inclination (°)	Azimuth (°)	Vertical Depth (ft)	+N/-S (ft)	+E/-W (ft)	Vertical Section (ft)	Dogleg Rate (°/100ft)	Build Rate (°/100ft)	Turn Rate (°/100ft)
0.00	0.00	0.000	0.00	-44.46	0.84	0.00	0.00	0.00	0.00
100.00	0.00	0.000	100.00	-44.46	0.84	0.00	0.00	0.00	0.00
200.00	0.00	0.000	200.00	-44.46	0.84	0.00	0.00	0.00	0.00
300.00	0.00	0.000	300.00	-44.46	0.84	0.00	0.00	0.00	0.00
400.00	0.00	0.000	400.00	-44.46	0.84	0.00	0.00	0.00	0.00
500.00	0.00	0.000	500.00	-44.46	0.84	0.00	0.00	0.00	0.00
600.00	0.00	0.000	600.00	-44.46	0.84	0.00	0.00	0.00	0.00
700.00	0.00	0.000	700.00	-44.46	0.84	0.00	0.00	0.00	0.00
800.00	0.00	0.000	800.00	-44.46	0.84	0.00	0.00	0.00	0.00
900.00	0.00	0.000	900.00	-44.46	0.84	0.00	0.00	0.00	0.00
1,000.00	0.00	0.000	1,000.00	-44.46	0.84	0.00	0.00	0.00	0.00
Start Build 2.00									
1,100.00	2.00	130.711	1,099.98	-45.60	2.16	1.30	2.00	2.00	0.00
1,200.00	4.00	130.711	1,199.84	-49.02	6.13	5.19	2.00	2.00	0.00
1,300.00	6.00	130.711	1,299.45	-54.70	12.73	11.68	2.00	2.00	0.00
1,400.00	8.00	130.711	1,398.70	-62.65	21.97	20.74	2.00	2.00	0.00
1,500.00	10.00	130.711	1,497.47	-72.85	33.83	32.38	2.00	2.00	0.00
1,600.00	12.00	130.711	1,595.62	-85.30	48.29	46.57	2.00	2.00	0.00
1,700.00	14.00	130.711	1,693.06	-99.97	65.34	63.31	2.00	2.00	0.00
1,800.00	16.00	130.711	1,789.64	-116.85	84.96	82.56	2.00	2.00	0.00
1,852.35	17.05	130.711	1,839.83	-126.56	96.24	93.64	2.00	2.00	0.00
Start 300.24 hold at 1852.35 MD									
1,900.00	17.05	130.711	1,885.39	-135.67	106.83	104.03	0.00	0.00	0.00
2,000.00	17.05	130.711	1,980.99	-154.79	129.05	125.84	0.00	0.00	0.00
2,100.00	17.05	130.711	2,076.60	-173.91	151.27	147.65	0.00	0.00	0.00
2,152.59	17.05	130.711	2,126.88	-183.97	162.96	159.12	0.00	0.00	0.00
Start Drop -1.50									
2,200.00	16.34	130.711	2,172.29	-192.85	173.28	169.25	1.50	-1.50	0.00
2,300.00	14.84	130.711	2,268.61	-210.37	193.65	189.24	1.50	-1.50	0.00
2,400.00	13.34	130.711	2,365.60	-226.25	212.10	207.35	1.50	-1.50	0.00
2,500.00	11.84	130.711	2,463.20	-240.46	228.61	223.56	1.50	-1.50	0.00
2,600.00	10.34	130.711	2,561.33	-253.00	243.19	237.86	1.50	-1.50	0.00
2,700.00	8.84	130.711	2,659.93	-263.86	255.81	250.25	1.50	-1.50	0.00
2,800.00	7.34	130.711	2,758.93	-273.04	266.47	260.72	1.50	-1.50	0.00
2,900.00	5.84	130.711	2,858.27	-280.52	275.16	269.25	1.50	-1.50	0.00
3,000.00	4.34	130.711	2,957.87	-286.30	281.88	275.84	1.50	-1.50	0.00
3,100.00	2.84	130.711	3,057.67	-290.38	286.62	280.50	1.50	-1.50	0.00
3,200.00	1.34	130.711	3,157.60	-292.75	289.38	283.20	1.50	-1.50	0.00
3,289.05	0.00	0.000	3,246.65	-293.43	290.17	283.98	1.50	-1.50	0.00
Start 2455.39 hold at 3289.05 MD									
3,300.00	0.00	0.000	3,257.60	-293.43	290.17	283.98	0.00	0.00	0.00
3,400.00	0.00	0.000	3,357.60	-293.43	290.17	283.98	0.00	0.00	0.00
3,500.00	0.00	0.000	3,457.60	-293.43	290.17	283.98	0.00	0.00	0.00
3,600.00	0.00	0.000	3,557.60	-293.43	290.17	283.98	0.00	0.00	0.00
3,700.00	0.00	0.000	3,657.60	-293.43	290.17	283.98	0.00	0.00	0.00
3,800.00	0.00	0.000	3,757.60	-293.43	290.17	283.98	0.00	0.00	0.00
3,900.00	0.00	0.000	3,857.60	-293.43	290.17	283.98	0.00	0.00	0.00
4,000.00	0.00	0.000	3,957.60	-293.43	290.17	283.98	0.00	0.00	0.00
4,100.00	0.00	0.000	4,057.60	-293.43	290.17	283.98	0.00	0.00	0.00
4,200.00	0.00	0.000	4,157.60	-293.43	290.17	283.98	0.00	0.00	0.00
4,300.00	0.00	0.000	4,257.60	-293.43	290.17	283.98	0.00	0.00	0.00
4,400.00	0.00	0.000	4,357.60	-293.43	290.17	283.98	0.00	0.00	0.00
4,500.00	0.00	0.000	4,457.60	-293.43	290.17	283.98	0.00	0.00	0.00
4,600.00	0.00	0.000	4,557.60	-293.43	290.17	283.98	0.00	0.00	0.00

Database:	Casper District	Local Co-ordinate Reference:	Site Anschutz State 5-62-26_25 SE27
Company:	Bill Barrett Corp.	TVD Reference:	GL 4656.1' & KB 20' @ 4676.10ft
Project:	Weld County, CO NAD 83	MD Reference:	GL 4656.1' & KB 20' @ 4676.10ft
Site:	Anschutz State 5-62-26_25 SE27	North Reference:	True
Well:	Anschutz State 5-62-26-4956C	Survey Calculation Method:	Minimum Curvature
Wellbore:	OH		
Design:	Plan 1		

Planned Survey									
Measured Depth (ft)	Inclination (°)	Azimuth (°)	Vertical Depth (ft)	+N/-S (ft)	+E/-W (ft)	Vertical Section (ft)	Dogleg Rate (°/100ft)	Build Rate (°/100ft)	Turn Rate (°/100ft)
4,700.00	0.00	0.000	4,657.60	-293.43	290.17	283.98	0.00	0.00	0.00
4,800.00	0.00	0.000	4,757.60	-293.43	290.17	283.98	0.00	0.00	0.00
4,900.00	0.00	0.000	4,857.60	-293.43	290.17	283.98	0.00	0.00	0.00
5,000.00	0.00	0.000	4,957.60	-293.43	290.17	283.98	0.00	0.00	0.00
5,100.00	0.00	0.000	5,057.60	-293.43	290.17	283.98	0.00	0.00	0.00
5,200.00	0.00	0.000	5,157.60	-293.43	290.17	283.98	0.00	0.00	0.00
5,300.00	0.00	0.000	5,257.60	-293.43	290.17	283.98	0.00	0.00	0.00
5,400.00	0.00	0.000	5,357.60	-293.43	290.17	283.98	0.00	0.00	0.00
5,500.00	0.00	0.000	5,457.60	-293.43	290.17	283.98	0.00	0.00	0.00
5,600.00	0.00	0.000	5,557.60	-293.43	290.17	283.98	0.00	0.00	0.00
5,700.00	0.00	0.000	5,657.60	-293.43	290.17	283.98	0.00	0.00	0.00
5,744.44	0.00	0.000	5,702.04	-293.43	290.17	283.98	0.00	0.00	0.00
Start DLS 10.00 TFO 88.78									
5,800.00	5.56	88.782	5,757.51	-293.37	292.86	286.67	10.00	10.00	0.00
5,900.00	15.56	88.782	5,855.69	-292.98	311.15	304.96	10.00	10.00	0.00
6,000.00	25.56	88.782	5,949.21	-292.24	346.21	340.03	10.00	10.00	0.00
6,100.00	35.56	88.782	6,035.21	-291.16	396.97	390.80	10.00	10.00	0.00
6,200.00	45.56	88.782	6,111.09	-289.78	461.89	455.74	10.00	10.00	0.00
6,300.00	55.56	88.782	6,174.54	-288.14	539.00	532.87	10.00	10.00	0.00
6,400.00	65.56	88.782	6,223.64	-286.29	625.96	619.84	10.00	10.00	0.00
6,500.00	75.56	88.782	6,256.89	-284.29	720.11	714.02	10.00	10.00	0.00
6,600.00	85.56	88.782	6,273.28	-282.19	818.61	812.54	10.00	10.00	0.00
6,645.26	90.08	88.782	6,275.00	-281.23	863.81	857.75	10.00	10.00	0.00
Start 9876.32 hold at 6645.26 MD									
6,700.00	90.08	88.782	6,274.92	-280.07	918.54	912.49	0.00	0.00	0.00
6,800.00	90.08	88.782	6,274.78	-277.94	1,018.52	1,012.49	0.00	0.00	0.00
6,900.00	90.08	88.782	6,274.64	-275.81	1,118.50	1,112.49	0.00	0.00	0.00
7,000.00	90.08	88.782	6,274.49	-273.69	1,218.47	1,212.49	0.00	0.00	0.00
7,100.00	90.08	88.782	6,274.35	-271.56	1,318.45	1,312.49	0.00	0.00	0.00
7,200.00	90.08	88.782	6,274.21	-269.44	1,418.43	1,412.49	0.00	0.00	0.00
7,300.00	90.08	88.782	6,274.07	-267.31	1,518.41	1,512.49	0.00	0.00	0.00
7,400.00	90.08	88.782	6,273.93	-265.18	1,618.38	1,612.49	0.00	0.00	0.00
7,500.00	90.08	88.782	6,273.79	-263.06	1,718.36	1,712.49	0.00	0.00	0.00
7,600.00	90.08	88.782	6,273.64	-260.93	1,818.34	1,812.49	0.00	0.00	0.00
7,700.00	90.08	88.782	6,273.50	-258.81	1,918.31	1,912.49	0.00	0.00	0.00
7,800.00	90.08	88.782	6,273.36	-256.68	2,018.29	2,012.49	0.00	0.00	0.00
7,900.00	90.08	88.782	6,273.22	-254.55	2,118.27	2,112.49	0.00	0.00	0.00
8,000.00	90.08	88.782	6,273.08	-252.43	2,218.25	2,212.49	0.00	0.00	0.00
8,100.00	90.08	88.782	6,272.94	-250.30	2,318.22	2,312.49	0.00	0.00	0.00
8,200.00	90.08	88.782	6,272.79	-248.17	2,418.20	2,412.49	0.00	0.00	0.00
8,300.00	90.08	88.782	6,272.65	-246.05	2,518.18	2,512.49	0.00	0.00	0.00
8,400.00	90.08	88.782	6,272.51	-243.92	2,618.16	2,612.49	0.00	0.00	0.00
8,500.00	90.08	88.782	6,272.37	-241.80	2,718.13	2,712.49	0.00	0.00	0.00
8,600.00	90.08	88.782	6,272.23	-239.67	2,818.11	2,812.49	0.00	0.00	0.00
8,700.00	90.08	88.782	6,272.09	-237.54	2,918.09	2,912.49	0.00	0.00	0.00
8,800.00	90.08	88.782	6,271.94	-235.42	3,018.07	3,012.49	0.00	0.00	0.00
8,900.00	90.08	88.782	6,271.80	-233.29	3,118.04	3,112.49	0.00	0.00	0.00
9,000.00	90.08	88.782	6,271.66	-231.17	3,218.02	3,212.49	0.00	0.00	0.00
9,100.00	90.08	88.782	6,271.52	-229.04	3,318.00	3,312.49	0.00	0.00	0.00
9,200.00	90.08	88.782	6,271.38	-226.91	3,417.97	3,412.49	0.00	0.00	0.00
9,300.00	90.08	88.782	6,271.23	-224.79	3,517.95	3,512.49	0.00	0.00	0.00
9,400.00	90.08	88.782	6,271.09	-222.66	3,617.93	3,612.49	0.00	0.00	0.00
9,500.00	90.08	88.782	6,270.95	-220.54	3,717.91	3,712.49	0.00	0.00	0.00

Database:	Casper District	Local Co-ordinate Reference:	Site Anschutz State 5-62-26_25 SE27
Company:	Bill Barrett Corp.	TVD Reference:	GL 4656.1' & KB 20' @ 4676.10ft
Project:	Weld County, CO NAD 83	MD Reference:	GL 4656.1' & KB 20' @ 4676.10ft
Site:	Anschutz State 5-62-26_25 SE27	North Reference:	True
Well:	Anschutz State 5-62-26-4956C	Survey Calculation Method:	Minimum Curvature
Wellbore:	OH		
Design:	Plan 1		

Planned Survey									
Measured Depth (ft)	Inclination (°)	Azimuth (°)	Vertical Depth (ft)	+N/-S (ft)	+E/-W (ft)	Vertical Section (ft)	Dogleg Rate (°/100ft)	Build Rate (°/100ft)	Turn Rate (°/100ft)
9,600.00	90.08	88.782	6,270.81	-218.41	3,817.88	3,812.49	0.00	0.00	0.00
9,700.00	90.08	88.782	6,270.67	-216.28	3,917.86	3,912.49	0.00	0.00	0.00
9,800.00	90.08	88.782	6,270.53	-214.16	4,017.84	4,012.49	0.00	0.00	0.00
9,900.00	90.08	88.782	6,270.38	-212.03	4,117.82	4,112.49	0.00	0.00	0.00
10,000.00	90.08	88.782	6,270.24	-209.91	4,217.79	4,212.49	0.00	0.00	0.00
10,100.00	90.08	88.782	6,270.10	-207.78	4,317.77	4,312.49	0.00	0.00	0.00
10,200.00	90.08	88.782	6,269.96	-205.65	4,417.75	4,412.49	0.00	0.00	0.00
10,300.00	90.08	88.782	6,269.82	-203.53	4,517.72	4,512.49	0.00	0.00	0.00
10,400.00	90.08	88.782	6,269.68	-201.40	4,617.70	4,612.49	0.00	0.00	0.00
10,500.00	90.08	88.782	6,269.53	-199.28	4,717.68	4,712.49	0.00	0.00	0.00
10,600.00	90.08	88.782	6,269.39	-197.15	4,817.66	4,812.49	0.00	0.00	0.00
10,700.00	90.08	88.782	6,269.25	-195.02	4,917.63	4,912.49	0.00	0.00	0.00
10,800.00	90.08	88.782	6,269.11	-192.90	5,017.61	5,012.49	0.00	0.00	0.00
10,900.00	90.08	88.782	6,268.97	-190.77	5,117.59	5,112.49	0.00	0.00	0.00
11,000.00	90.08	88.782	6,268.83	-188.65	5,217.57	5,212.49	0.00	0.00	0.00
11,100.00	90.08	88.782	6,268.68	-186.52	5,317.54	5,312.49	0.00	0.00	0.00
11,200.00	90.08	88.782	6,268.54	-184.39	5,417.52	5,412.49	0.00	0.00	0.00
11,300.00	90.08	88.782	6,268.40	-182.27	5,517.50	5,512.49	0.00	0.00	0.00
11,400.00	90.08	88.782	6,268.26	-180.14	5,617.47	5,612.49	0.00	0.00	0.00
11,500.00	90.08	88.782	6,268.12	-178.02	5,717.45	5,712.49	0.00	0.00	0.00
11,600.00	90.08	88.782	6,267.98	-175.89	5,817.43	5,812.49	0.00	0.00	0.00
11,700.00	90.08	88.782	6,267.83	-173.76	5,917.41	5,912.49	0.00	0.00	0.00
11,800.00	90.08	88.782	6,267.69	-171.64	6,017.38	6,012.49	0.00	0.00	0.00
11,900.00	90.08	88.782	6,267.55	-169.51	6,117.36	6,112.49	0.00	0.00	0.00
12,000.00	90.08	88.782	6,267.41	-167.39	6,217.34	6,212.49	0.00	0.00	0.00
12,100.00	90.08	88.782	6,267.27	-165.26	6,317.32	6,312.49	0.00	0.00	0.00
12,200.00	90.08	88.782	6,267.12	-163.13	6,417.29	6,412.49	0.00	0.00	0.00
12,300.00	90.08	88.782	6,266.98	-161.01	6,517.27	6,512.49	0.00	0.00	0.00
12,400.00	90.08	88.782	6,266.84	-158.88	6,617.25	6,612.48	0.00	0.00	0.00
12,500.00	90.08	88.782	6,266.70	-156.75	6,717.23	6,712.48	0.00	0.00	0.00
12,600.00	90.08	88.782	6,266.56	-154.63	6,817.20	6,812.48	0.00	0.00	0.00
12,700.00	90.08	88.782	6,266.42	-152.50	6,917.18	6,912.48	0.00	0.00	0.00
12,800.00	90.08	88.782	6,266.27	-150.38	7,017.16	7,012.48	0.00	0.00	0.00
12,900.00	90.08	88.782	6,266.13	-148.25	7,117.13	7,112.48	0.00	0.00	0.00
13,000.00	90.08	88.782	6,265.99	-146.12	7,217.11	7,212.48	0.00	0.00	0.00
13,100.00	90.08	88.782	6,265.85	-144.00	7,317.09	7,312.48	0.00	0.00	0.00
13,200.00	90.08	88.782	6,265.71	-141.87	7,417.07	7,412.48	0.00	0.00	0.00
13,300.00	90.08	88.782	6,265.57	-139.75	7,517.04	7,512.48	0.00	0.00	0.00
13,400.00	90.08	88.782	6,265.42	-137.62	7,617.02	7,612.48	0.00	0.00	0.00
13,500.00	90.08	88.782	6,265.28	-135.49	7,717.00	7,712.48	0.00	0.00	0.00
13,600.00	90.08	88.782	6,265.14	-133.37	7,816.98	7,812.48	0.00	0.00	0.00
13,700.00	90.08	88.782	6,265.00	-131.24	7,916.95	7,912.48	0.00	0.00	0.00
13,800.00	90.08	88.782	6,264.86	-129.12	8,016.93	8,012.48	0.00	0.00	0.00
13,900.00	90.08	88.782	6,264.72	-126.99	8,116.91	8,112.48	0.00	0.00	0.00
14,000.00	90.08	88.782	6,264.57	-124.86	8,216.88	8,212.48	0.00	0.00	0.00
14,100.00	90.08	88.782	6,264.43	-122.74	8,316.86	8,312.48	0.00	0.00	0.00
14,200.00	90.08	88.782	6,264.29	-120.61	8,416.84	8,412.48	0.00	0.00	0.00
14,300.00	90.08	88.782	6,264.15	-118.49	8,516.82	8,512.48	0.00	0.00	0.00
14,400.00	90.08	88.782	6,264.01	-116.36	8,616.79	8,612.48	0.00	0.00	0.00
14,500.00	90.08	88.782	6,263.87	-114.23	8,716.77	8,712.48	0.00	0.00	0.00
14,600.00	90.08	88.782	6,263.72	-112.11	8,816.75	8,812.48	0.00	0.00	0.00
14,700.00	90.08	88.782	6,263.58	-109.98	8,916.73	8,912.48	0.00	0.00	0.00
14,800.00	90.08	88.782	6,263.44	-107.86	9,016.70	9,012.48	0.00	0.00	0.00
14,900.00	90.08	88.782	6,263.30	-105.73	9,116.68	9,112.48	0.00	0.00	0.00

Database:	Casper District	Local Co-ordinate Reference:	Site Anschutz State 5-62-26_25 SE27
Company:	Bill Barrett Corp.	TVD Reference:	GL 4656.1' & KB 20' @ 4676.10ft
Project:	Weld County, CO NAD 83	MD Reference:	GL 4656.1' & KB 20' @ 4676.10ft
Site:	Anschutz State 5-62-26_25 SE27	North Reference:	True
Well:	Anschutz State 5-62-26-4956C	Survey Calculation Method:	Minimum Curvature
Wellbore:	OH		
Design:	Plan 1		

Planned Survey									
Measured Depth (ft)	Inclination (°)	Azimuth (°)	Vertical Depth (ft)	+N/-S (ft)	+E/-W (ft)	Vertical Section (ft)	Dogleg Rate (°/100ft)	Build Rate (°/100ft)	Turn Rate (°/100ft)
15,000.00	90.08	88.782	6,263.16	-103.60	9,216.66	9,212.48	0.00	0.00	0.00
15,100.00	90.08	88.782	6,263.01	-101.48	9,316.63	9,312.48	0.00	0.00	0.00
15,200.00	90.08	88.782	6,262.87	-99.35	9,416.61	9,412.48	0.00	0.00	0.00
15,300.00	90.08	88.782	6,262.73	-97.23	9,516.59	9,512.48	0.00	0.00	0.00
15,400.00	90.08	88.782	6,262.59	-95.10	9,616.57	9,612.48	0.00	0.00	0.00
15,500.00	90.08	88.782	6,262.45	-92.97	9,716.54	9,712.48	0.00	0.00	0.00
15,600.00	90.08	88.782	6,262.31	-90.85	9,816.52	9,812.48	0.00	0.00	0.00
15,700.00	90.08	88.782	6,262.16	-88.72	9,916.50	9,912.48	0.00	0.00	0.00
15,800.00	90.08	88.782	6,262.02	-86.60	10,016.48	10,012.48	0.00	0.00	0.00
15,900.00	90.08	88.782	6,261.88	-84.47	10,116.45	10,112.48	0.00	0.00	0.00
16,000.00	90.08	88.782	6,261.74	-82.34	10,216.43	10,212.48	0.00	0.00	0.00
16,100.00	90.08	88.782	6,261.60	-80.22	10,316.41	10,312.48	0.00	0.00	0.00
16,200.00	90.08	88.782	6,261.46	-78.09	10,416.39	10,412.48	0.00	0.00	0.00
16,300.00	90.08	88.782	6,261.31	-75.97	10,516.36	10,512.48	0.00	0.00	0.00
16,400.00	90.08	88.782	6,261.17	-73.84	10,616.34	10,612.48	0.00	0.00	0.00
16,500.00	90.08	88.782	6,261.03	-71.71	10,716.32	10,712.48	0.00	0.00	0.00
16,521.58	90.08	88.782	6,261.00	-71.25	10,737.89	10,734.06	0.00	0.00	0.00
TD at 16521.58									

Design Targets									
Target Name	Dip Angle (°)	Dip Dir. (°)	TVD (ft)	+N/-S (ft)	+E/-W (ft)	Northing (usft)	Easting (usft)	Latitude	Longitude
- hit/miss target									
- Shape									
5-62-26-4956C PBHL	0.00	0.000	6,261.00	-71.25	10,737.89	1,379,017.67	3,344,664.15	40° 22' 1.942 N	104° 15' 46.912 W
- plan hits target center									
- Point									
5-62-26-4956C LP	0.00	0.000	6,275.00	-281.22	863.81	1,378,674.28	3,334,793.83	40° 21' 59.890 N	104° 17' 54.481 W
- plan misses target center by 0.01ft at 6645.25ft MD (6275.00 TVD, -281.23 N, 863.81 E)									
- Point									

Plan Annotations				
Measured Depth (ft)	Vertical Depth (ft)	Local Coordinates		Comment
		+N/-S (ft)	+E/-W (ft)	
1,000.00	1,000.00	-44.46	0.84	Start Build 2.00
1,852.35	1,839.83	-126.56	96.24	Start 300.24 hold at 1852.35 MD
2,152.59	2,126.88	-183.97	162.96	Start Drop -1.50
3,289.05	3,246.65	-293.43	290.17	Start 2455.39 hold at 3289.05 MD
5,744.44	5,702.04	-293.43	290.17	Start DLS 10.00 TFO 88.78
6,645.26	6,275.00	-281.23	863.81	Start 9876.32 hold at 6645.26 MD
16,521.58	6,261.00	-71.25	10,737.89	TD at 16521.58