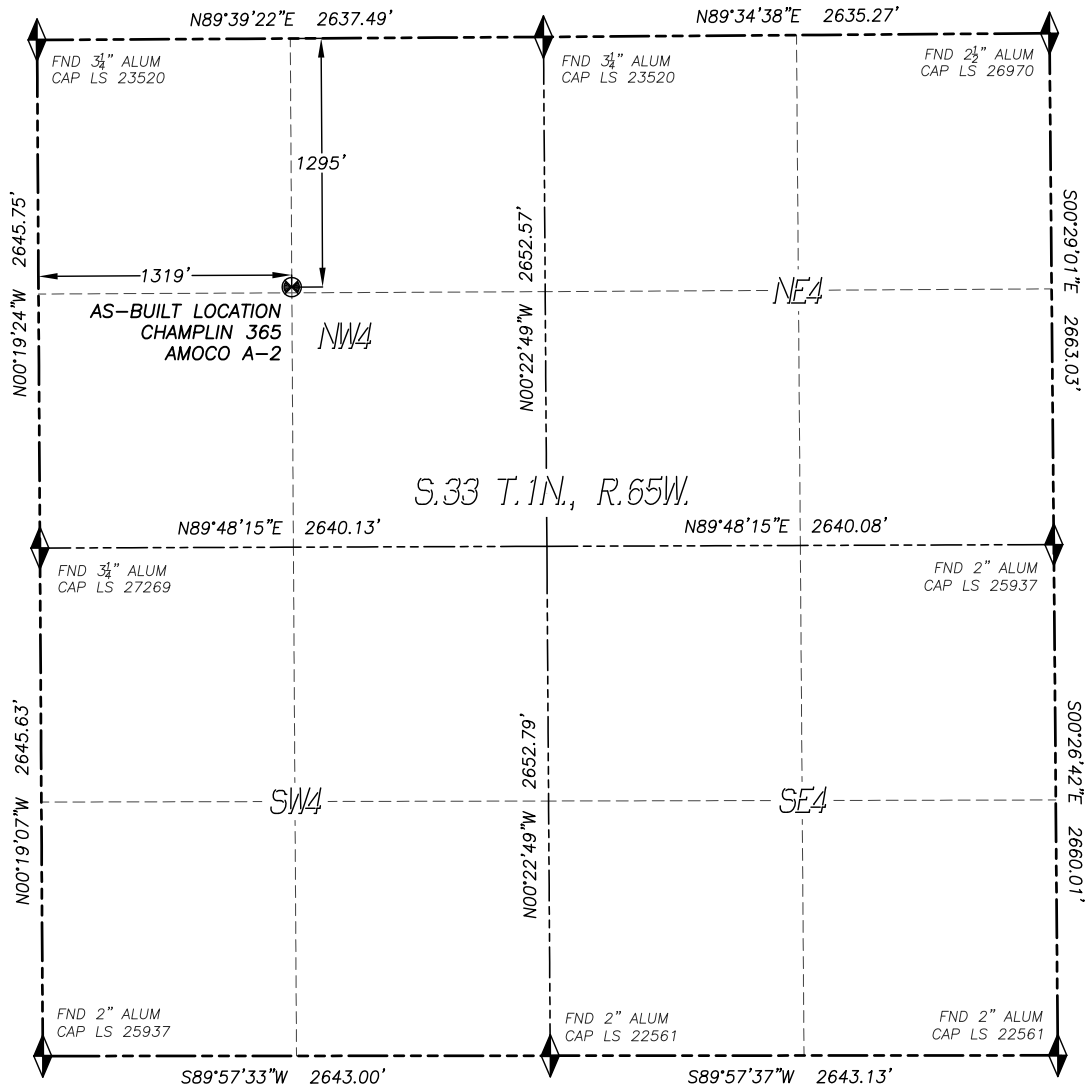


DALEY LAND SURVEYING, INC.
WELL AS-BUILT SURVEY
CHAMPLIN 365 AMOCO A-2

SECTION: 33
TOWNSHIP: 1N
RANGE: 65W



0 500 1000
SCALE: 1" = 1000'

LEGEND

- FOUND MONUMENT AS DESCRIBED
- PROPOSED WELL
- EXISTING WELL
- BOTTOM HOLE
- ABANDONED WELL
- CALCULATED POSITION

IN ACCORDANCE WITH A REQUEST FROM CONFLUENCE RESOURCES., DALEY LAND SURVEYING, INC. HAS DETERMINED THE SURFACE LOCATION OF THE CHAMPLIN 365 AMOCO A-2 WELL TO BE 1295' FNL, 1319' FWL, AS MEASURED AT NINETY (90) DEGREES FROM THE SECTION LINES OF SECTION 33, TOWNSHIP 1 NORTH, RANGE 65 WEST, OF THE 6TH PRINCIPAL MERIDIAN, WELD COUNTY, COLORADO.

I HEREBY STATE THAT THIS WELL AS-BUILT SURVEY WAS PREPARED BY ME OR UNDER MY DIRECT SUPERVISION, THAT THE WORK WAS COMPLETED ON 10/26/2017 FOR AND ON BEHALF OF CONFLUENCE RESOURCES., AND THAT THIS MAP DOES NOT REPRESENT A BOUNDARY SURVEY, IT IS NOT A LAND SURVEY PLAT OR AN IMPROVEMENT SURVEY PLAT AND IT IS NOT TO BE RELIED UPON FOR THE ESTABLISHMENT OF FENCE, BUILDING OR OTHER FUTURE IMPROVEMENT LINES.

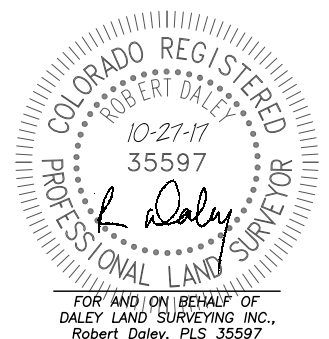
NOTES:

- 1) BEARINGS FOR THIS MAP ARE ASSUMED AND BASED UPON GPS OBSERVATIONS MADE BETWEEN MONUMENTS LOCATED AT THE NORTHWEST CORNER AND NORTH QUARTER CORNER OF SECTION 33, T.1N., R.65W.
- 2) HORIZONTAL DATUM IS NAD83.
- 3) VERTICAL DATUM IS NAVD88 AND ORIGINATES FROM THE LOCAL C.O.R.S. NETWORK, UTILIZING THE GEOID12A MODEL.
- 4) SURFACE USE: AGRICULTURAL.
- 5) INST. OPERATOR: SCOTT ESTABROOKS.
- 6) WELL WAS EXCAVATED AND THE TOP OF THE WELL HEAD WAS LOCATED.

NAD 83 LATITUDE AND LONGITUDE

SURFACE LOCATION:

LATITUDE: N40.01153°
LONGITUDE: W104.67377°
ELEV: 5109'
GRND ELEV: 5115'
PDOP: 1.3
QTR/QTR: NW4/NW4



FOR AND ON BEHALF OF
DALEY LAND SURVEYING INC.,
Robert Daley, PLS 35597