



Project: Weld County, CO NAD 83  
Site: Anschutz Equus Farms 4-62-28\_27 NWSW Pad [GOOD]  
Well: Anschutz Equus Farms 4-62-29-4033C  
Wellbore: OH  
Design: OH

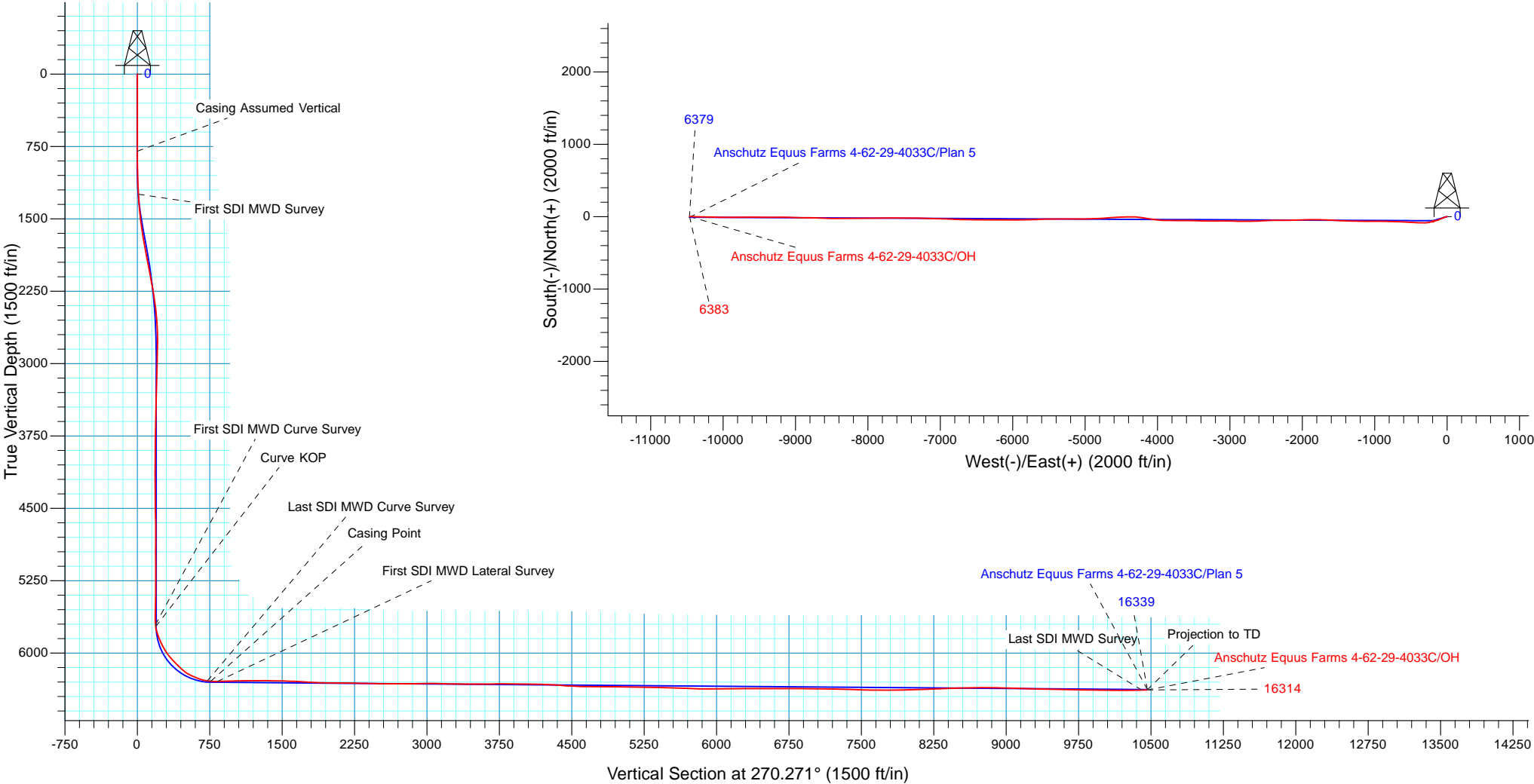


WELL DETAILS: Anschutz Equus Farms 4-62-29-4033C				
GL 4624.3' & KB 20' @ 4644.30ft (Savanna 802)				
Northing	Easting	Latitude	Longitude	
1347530.10	3324350.34	40° 16' 53.520 N	104° 20' 14.670 W	

Design: OH (Anschutz Equus Farms 4-62-29-4033C/OH)	
Created By: Seth Burstad	Date: 9-5-2017

PROJECT DETAILS: Weld County, CO NAD 83	
Geodetic System:	US State Plane 1983
Datum:	North American Datum 1983
Ellipsoid:	GRS 1980
Zone:	Colorado Northern Zone
System Datum:	Mean Sea Level
Local North:	True

ANNOTATIONS									
TVD	MD	Inc	Azi	+N/-S	+E/-W	Vsect	Departure	Annotation	
800.00	800.00	0.00	0.000	0.00	0.00	0.00	0.00	Casing Assumed Vertical	
1244.76	1245.00	3.29	260.700	-2.06	-12.60	12.59	12.77	First SDI MWD Survey	
5706.14	5724.00	3.43	248.540	-65.46	-189.16	188.84	279.51	First SDI MWD Curve Survey	
5726.05	5744.00	7.03	252.924	-66.04	-190.88	190.57	283.63	Curve KOP	
6288.29	6569.00	82.33	271.860	-69.61	-727.17	726.84	820.25	Last SDI MWD Curve Survey	
6292.03	6604.00	85.41	271.615	-68.56	-761.95	761.62	855.16	Casing Point	
6293.87	6674.00	91.58	271.130	-66.88	-831.88	831.55	924.99	First SDI MWD Lateral Survey	
6384.94	16257.00	91.64	271.630	-0.57	-10405.62	10405.51	10504.98	Last SDI MWD Survey	
6383.31	16314.00	91.64	271.630	1.06	-10462.58	10462.47	10561.95	Projection to TD	





**Bill Barrett Corporation**

## **Bill Barrett Corp.**

**Weld County, CO NAD 83**

**Anschutz Equus Farms 4-62-28\_27 NWSW Pad [GOOD]**

**Anschutz Equus Farms 4-62-29-4033C**

**OH**

**Design: OH**

## **Standard Survey Report**

**05 September, 2017**



**Scientific Drilling**

[www.scientificdrilling.com](http://www.scientificdrilling.com)



<b>Company:</b>	Bill Barrett Corp.	<b>Local Co-ordinate Reference:</b>	Well Anschutz Equus Farms 4-62-29-4033C
<b>Project:</b>	Weld County, CO NAD 83	<b>TVD Reference:</b>	GL 4624.3' & KB 20' @ 4644.30ft (Savanna 802)
<b>Site:</b>	Anschutz Equus Farms 4-62-28_27 NWSW Pad [GOOD]	<b>MD Reference:</b>	GL 4624.3' & KB 20' @ 4644.30ft (Savanna 802)
<b>Well:</b>	Anschutz Equus Farms 4-62-29-4033C	<b>North Reference:</b>	True
<b>Wellbore:</b>	OH	<b>Survey Calculation Method:</b>	Minimum Curvature
<b>Design:</b>	OH	<b>Database:</b>	Casper District

<b>Project</b>	Weld County, CO NAD 83		
<b>Map System:</b>	US State Plane 1983	<b>System Datum:</b>	Mean Sea Level
<b>Geo Datum:</b>	North American Datum 1983		
<b>Map Zone:</b>	Colorado Northern Zone		

Site	Anschutz Equus Farms 4-62-28_27 NWSW Pad [GOOD], Site Center : Anschutz Equus Farms 4-62-28-3240C				
Site Position:		Northing:	1,347,562.98 usft	Latitude:	40° 16' 53.821 N
From:	Lat/Long	Easting:	3,324,530.53 usft	Longitude:	104° 20' 12.340 W
Position Uncertainty:	0.00 ft	Slot Radius:	13.200 in	Grid Convergence:	0.75 °

Well	Anschutz Equus Farms 4-62-29-4033C, 2143' FSL 306' FWL Sec 28 T4N R62W					
Well Position	+N/-S	0.00 ft	Northing:	1,347,530.10 usft	Latitude:	40° 16' 53.520 N
	+E/-W	0.00 ft	Easting:	3,324,350.35 usft	Longitude:	104° 20' 14.670 W
Position Uncertainty		0.00 ft	Wellhead Elevation:	0.00 ft	Ground Level:	4,624.30 ft

<b>Wellbore</b>	OH					
Magnetics	Model Name	Sample Date	Declination (°)	Dip Angle (°)	Field Strength (nT)	
	HDGM	4/28/2017	8.28	66.95	52,386	
	HDGM	6/28/2017	8.27	66.95	52,366	

<b>Design</b>	OH				
<b>Audit Notes:</b>					
<b>Version:</b>	1.0	<b>Phase:</b>	ACTUAL	<b>Tie On Depth:</b>	0.00
Vertical Section:	Depth From (TVD) (ft)	+N/-S (ft)	+E/-W (ft)	Direction (°)	
	0.00	0.00	0.00	270.271	

<b>Survey Program</b>	<b>Date</b>	9/5/2017			
From (ft)	To (ft)	Survey (Wellbore)	Tool Name	Description	
800.00	6,569.00	Survey #1 - Intermediate (OH)	OWSG MWD	OWSG MWD - Standard	
6,674.00	16,314.00	Survey #2 - Lateral (OH)	OWSG MWD	OWSG MWD - Standard	

Survey									
Measured Depth (ft)	Inclination (°)	Azimuth (°)	Vertical Depth (ft)	+N/-S (ft)	+E/-W (ft)	Vertical Section (ft)	Dogleg Rate (°/100ft)	Build Rate (°/100ft)	Turn Rate (°/100ft)
0.00	0.00	0.000	0.00	0.00	0.00	0.00	0.00	0.00	0.00
800.00	0.00	0.000	800.00	0.00	0.00	0.00	0.00	0.00	0.00
Casing Assumed Vertical									
1,245.00	3.29	260.700	1,244.76	-2.06	-12.60	12.59	0.74	0.74	0.00
First SDI MWD Survey									
1,336.00	4.91	242.240	1,335.52	-4.30	-18.63	18.61	2.27	1.78	-20.29
1,427.00	5.25	241.190	1,426.17	-8.12	-25.72	25.68	0.39	0.37	-1.15
1,519.00	7.47	254.470	1,517.60	-11.75	-35.17	35.12	2.88	2.41	14.43

<b>Company:</b>	Bill Barrett Corp.	<b>Local Co-ordinate Reference:</b>	Well Anschutz Equus Farms 4-62-29-4033C
<b>Project:</b>	Weld County, CO NAD 83	<b>TVD Reference:</b>	GL 4624.3' & KB 20' @ 4644.30ft (Savanna 802)
<b>Site:</b>	Anschutz Equus Farms 4-62-28_27 NWSW Pad [GOOD]	<b>MD Reference:</b>	GL 4624.3' & KB 20' @ 4644.30ft (Savanna 802)
<b>Well:</b>	Anschutz Equus Farms 4-62-29-4033C	<b>North Reference:</b>	True
<b>Wellbore:</b>	OH	<b>Survey Calculation Method:</b>	Minimum Curvature
<b>Design:</b>	OH	<b>Database:</b>	Casper District

Survey									
Measured Depth (ft)	Inclination (°)	Azimuth (°)	Vertical Depth (ft)	+N/-S (ft)	+E/-W (ft)	Vertical Section (ft)	Dogleg Rate (°/100ft)	Build Rate (°/100ft)	Turn Rate (°/100ft)
1,611.00	8.72	248.500	1,608.68	-15.91	-47.43	47.35	1.64	1.36	-6.49
1,702.00	11.22	249.500	1,698.30	-21.54	-62.14	62.04	2.75	2.75	1.10
1,793.00	10.94	247.130	1,787.60	-27.99	-78.39	78.25	0.59	-0.31	-2.60
1,885.00	11.94	244.850	1,877.78	-35.43	-95.05	94.88	1.19	1.09	-2.48
1,975.00	11.27	246.610	1,965.94	-42.88	-111.55	111.34	0.84	-0.74	1.96
2,067.00	10.92	255.790	2,056.22	-48.59	-128.25	128.01	1.96	-0.38	9.98
2,158.00	10.77	257.460	2,145.60	-52.55	-144.90	144.65	0.38	-0.16	1.84
2,249.00	10.58	256.840	2,235.02	-56.30	-161.34	161.07	0.24	-0.21	-0.68
2,341.00	9.07	253.400	2,325.67	-60.29	-176.51	176.22	1.76	-1.64	-3.74
2,436.00	7.38	255.510	2,419.69	-63.96	-189.59	189.29	1.81	-1.78	2.22
2,530.00	5.56	253.520	2,513.09	-66.76	-199.81	199.49	1.95	-1.94	-2.12
2,625.00	3.46	247.090	2,607.79	-69.18	-206.86	206.53	2.27	-2.21	-6.77
2,718.00	1.30	221.480	2,700.71	-71.07	-210.15	209.81	2.53	-2.32	-27.54
2,812.00	0.87	77.680	2,794.70	-71.71	-210.15	209.81	2.20	-0.46	-152.98
2,906.00	1.52	71.580	2,888.68	-71.17	-208.27	207.94	0.70	0.69	-6.49
3,000.00	1.31	83.990	2,982.65	-70.66	-206.02	205.69	0.39	-0.22	13.20
3,094.00	1.34	80.220	3,076.63	-70.36	-203.87	203.54	0.10	0.03	-4.01
3,188.00	1.51	83.080	3,170.60	-70.03	-201.56	201.23	0.20	0.18	3.04
3,283.00	1.64	86.770	3,265.56	-69.80	-198.96	198.63	0.17	0.14	3.88
3,377.00	1.43	104.690	3,359.53	-70.02	-196.48	196.15	0.55	-0.22	19.06
3,471.00	1.19	115.670	3,453.50	-70.74	-194.47	194.13	0.37	-0.26	11.68
3,565.00	0.98	114.590	3,547.49	-71.50	-192.86	192.52	0.22	-0.22	-1.15
3,660.00	1.12	107.910	3,642.47	-72.12	-191.23	190.89	0.20	0.15	-7.03
3,754.00	1.26	104.760	3,736.45	-72.67	-189.36	189.01	0.16	0.15	-3.35
3,848.00	1.05	71.950	3,830.43	-72.66	-187.54	187.20	0.73	-0.22	-34.90
3,941.00	0.94	76.370	3,923.42	-72.22	-185.99	185.65	0.14	-0.12	4.75
4,035.00	1.17	16.460	4,017.40	-71.12	-184.97	184.63	1.14	0.24	-63.73
4,129.00	1.26	347.690	4,111.38	-69.19	-184.92	184.59	0.65	0.10	-30.61
4,223.00	1.40	344.410	4,205.36	-67.07	-185.45	185.13	0.17	0.15	-3.49
4,317.00	1.23	340.430	4,299.33	-65.01	-186.09	185.78	0.21	-0.18	-4.23
4,410.00	0.95	303.530	4,392.32	-63.65	-187.07	186.77	0.79	-0.30	-39.68
4,503.00	1.24	315.340	4,485.30	-62.51	-188.42	188.12	0.39	0.31	12.70
4,598.00	1.53	326.330	4,580.27	-60.72	-189.85	189.56	0.41	0.31	11.57
4,692.00	0.79	327.250	4,674.25	-59.13	-190.89	190.61	0.79	-0.79	0.98
4,786.00	0.18	43.570	4,768.25	-58.48	-191.14	190.86	0.82	-0.65	81.19
4,880.00	0.24	117.670	4,862.25	-58.46	-190.87	190.59	0.27	0.06	78.83
4,974.00	0.34	188.060	4,956.25	-58.83	-190.73	190.45	0.37	0.11	74.88
5,068.00	0.77	201.390	5,050.24	-59.69	-191.00	190.71	0.47	0.46	14.18
5,161.00	0.99	213.940	5,143.23	-60.94	-191.68	191.39	0.31	0.24	13.49
5,255.00	0.37	118.010	5,237.23	-61.76	-191.86	191.57	1.16	-0.66	-102.05
5,349.00	0.94	128.290	5,331.22	-62.38	-190.99	190.69	0.62	0.61	10.94
5,443.00	0.72	113.840	5,425.21	-63.10	-189.84	189.54	0.32	-0.23	-15.37
5,537.00	0.85	106.000	5,519.20	-63.53	-188.63	188.33	0.18	0.14	-8.34

<b>Company:</b>	Bill Barrett Corp.	<b>Local Co-ordinate Reference:</b>	Well Anschutz Equus Farms 4-62-29-4033C
<b>Project:</b>	Weld County, CO NAD 83	<b>TVD Reference:</b>	GL 4624.3' & KB 20' @ 4644.30ft (Savanna 802)
<b>Site:</b>	Anschutz Equus Farms 4-62-28_27 NWSW Pad [GOOD]	<b>MD Reference:</b>	GL 4624.3' & KB 20' @ 4644.30ft (Savanna 802)
<b>Well:</b>	Anschutz Equus Farms 4-62-29-4033C	<b>North Reference:</b>	True
<b>Wellbore:</b>	OH	<b>Survey Calculation Method:</b>	Minimum Curvature
<b>Design:</b>	OH	<b>Database:</b>	Casper District

Survey										
Measured Depth (ft)	Inclination (°)	Azimuth (°)	Vertical Depth (ft)	+N/-S (ft)	+E/-W (ft)	Vertical Section (ft)	Dogleg Rate (°/100ft)	Build Rate (°/100ft)	Turn Rate (°/100ft)	
5,630.00	0.98	116.570	5,612.19	-64.07	-187.26	186.95	0.23	0.14	11.37	
5,724.00	3.43	248.540	5,706.14	-65.46	-189.16	188.84	4.41	2.61	140.39	
<b>First SDI MWD Curve Survey</b>										
5,744.00	7.03	252.924	5,726.05	-66.04	-190.88	190.57	18.11	18.01	21.92	
<b>Curve KOP</b>										
5,818.00	20.42	255.680	5,797.78	-70.58	-207.80	207.46	18.11	18.09	3.72	
5,912.00	24.70	257.170	5,884.57	-79.01	-242.85	242.48	4.59	4.55	1.59	
6,006.00	31.11	265.570	5,967.62	-85.25	-286.28	285.87	7.98	6.82	8.94	
6,099.00	40.00	270.580	6,043.23	-86.81	-340.24	339.83	10.05	9.56	5.39	
6,193.00	46.33	272.630	6,111.76	-84.94	-404.48	404.07	6.90	6.73	2.18	
6,287.00	46.35	272.820	6,176.65	-81.71	-472.41	472.01	0.15	0.02	0.20	
6,381.00	65.10	273.340	6,229.35	-77.51	-549.62	549.25	19.95	19.95	0.55	
6,475.00	69.60	272.530	6,265.54	-73.08	-636.24	635.88	4.85	4.79	-0.86	
6,569.00	82.33	271.860	6,288.29	-69.61	-727.17	726.84	13.56	13.54	-0.71	
<b>Last SDI MWD Curve Survey</b>										
6,604.00	85.41	271.615	6,292.03	-68.56	-761.95	761.62	8.84	8.81	-0.70	
<b>Casing Point</b>										
6,674.00	91.58	271.130	6,293.87	-66.88	-831.88	831.55	8.84	8.81	-0.69	
<b>First SDI MWD Lateral Survey</b>										
6,768.00	91.17	270.250	6,291.61	-65.75	-925.84	925.52	1.03	-0.44	-0.94	
6,861.00	90.70	270.100	6,290.09	-65.47	-1,018.83	1,018.51	0.53	-0.51	-0.16	
6,955.00	90.84	270.190	6,288.83	-65.23	-1,112.82	1,112.50	0.18	0.15	0.10	
7,050.00	91.07	270.970	6,287.25	-64.27	-1,207.80	1,207.48	0.86	0.24	0.82	
7,143.00	89.73	271.740	6,286.60	-62.07	-1,300.77	1,300.46	1.66	-1.44	0.83	
7,237.00	88.32	271.780	6,288.20	-59.18	-1,394.71	1,394.41	1.50	-1.50	0.04	
7,331.00	89.50	274.200	6,289.99	-54.28	-1,488.56	1,488.28	2.86	1.26	2.57	
7,425.00	87.89	271.940	6,292.13	-49.25	-1,582.39	1,582.14	2.95	-1.71	-2.40	
7,518.00	87.21	272.190	6,296.10	-45.90	-1,675.24	1,675.01	0.78	-0.73	0.27	
7,612.00	86.68	271.440	6,301.11	-42.92	-1,769.06	1,768.84	0.98	-0.56	-0.80	
7,706.00	87.58	269.340	6,305.82	-42.29	-1,862.93	1,862.71	2.43	0.96	-2.23	
7,800.00	88.66	267.620	6,308.90	-44.78	-1,956.84	1,956.61	2.16	1.15	-1.83	
7,894.00	90.00	269.480	6,310.00	-47.16	-2,050.80	2,050.56	2.44	1.43	1.98	
7,988.00	88.73	268.030	6,311.04	-49.20	-2,144.77	2,144.51	2.05	-1.35	-1.54	
8,082.00	89.23	269.510	6,312.72	-51.22	-2,238.73	2,238.46	1.66	0.53	1.57	
8,177.00	89.43	270.940	6,313.83	-50.84	-2,333.72	2,333.45	1.52	0.21	1.51	
8,271.00	88.19	266.700	6,315.78	-52.78	-2,427.66	2,427.38	4.70	-1.32	-4.51	
8,364.00	88.82	267.200	6,318.21	-57.72	-2,520.49	2,520.19	0.86	0.68	0.54	
8,459.00	89.43	267.590	6,319.66	-62.04	-2,615.38	2,615.06	0.76	0.64	0.41	
8,552.00	90.07	269.440	6,320.06	-64.45	-2,708.35	2,708.01	2.10	0.69	1.99	
8,647.00	91.34	269.520	6,318.89	-65.31	-2,803.33	2,802.99	1.34	1.34	0.08	
8,741.00	90.23	271.730	6,317.61	-64.29	-2,897.31	2,896.97	2.63	-1.18	2.35	
8,835.00	91.81	272.840	6,315.93	-60.54	-2,991.22	2,990.90	2.05	1.68	1.18	
8,930.00	88.66	268.980	6,315.54	-59.03	-3,086.17	3,085.86	5.24	-3.32	-4.06	

<b>Company:</b>	Bill Barrett Corp.	<b>Local Co-ordinate Reference:</b>	Well Anschutz Equus Farms 4-62-29-4033C
<b>Project:</b>	Weld County, CO NAD 83	<b>TVD Reference:</b>	GL 4624.3' & KB 20' @ 4644.30ft (Savanna 802)
<b>Site:</b>	Anschutz Equus Farms 4-62-28_27 NWSW Pad [GOOD]	<b>MD Reference:</b>	GL 4624.3' & KB 20' @ 4644.30ft (Savanna 802)
<b>Well:</b>	Anschutz Equus Farms 4-62-29-4033C	<b>North Reference:</b>	True
<b>Wellbore:</b>	OH	<b>Survey Calculation Method:</b>	Minimum Curvature
<b>Design:</b>	OH	<b>Database:</b>	Casper District

Survey									
Measured Depth (ft)	Inclination (°)	Azimuth (°)	Vertical Depth (ft)	+N/-S (ft)	+E/-W (ft)	Vertical Section (ft)	Dogleg Rate (°/100ft)	Build Rate (°/100ft)	Turn Rate (°/100ft)
9,024.00	87.82	269.690	6,318.43	-60.12	-3,180.12	3,179.80	1.17	-0.89	0.76
9,118.00	89.36	270.400	6,320.74	-60.05	-3,274.09	3,273.77	1.80	1.64	0.76
9,211.00	89.83	270.960	6,321.40	-58.95	-3,367.08	3,366.76	0.79	0.51	0.60
9,305.00	90.23	271.140	6,321.35	-57.22	-3,461.06	3,460.76	0.47	0.43	0.19
9,400.00	90.17	270.590	6,321.02	-55.79	-3,556.05	3,555.75	0.58	-0.06	-0.58
9,494.00	89.93	269.690	6,320.94	-55.56	-3,650.05	3,649.75	0.99	-0.26	-0.96
9,588.00	90.74	272.320	6,320.39	-53.91	-3,744.03	3,743.73	2.93	0.86	2.80
9,682.00	89.03	268.320	6,320.58	-53.39	-3,838.00	3,837.71	4.63	-1.82	-4.26
9,776.00	89.80	272.950	6,321.54	-52.34	-3,931.97	3,931.67	4.99	0.82	4.93
9,871.00	89.93	278.030	6,321.76	-43.26	-4,026.50	4,026.25	5.35	0.14	5.35
9,966.00	89.97	279.870	6,321.84	-28.48	-4,120.34	4,120.16	1.94	0.04	1.94
10,060.00	86.85	277.430	6,324.45	-14.35	-4,213.21	4,213.10	4.21	-3.32	-2.60
10,154.00	85.23	272.940	6,330.95	-5.87	-4,306.58	4,306.50	5.07	-1.72	-4.78
10,248.00	86.14	268.970	6,338.02	-4.31	-4,400.28	4,400.21	4.32	0.97	-4.22
10,342.00	87.85	267.640	6,342.95	-7.09	-4,494.10	4,494.02	2.30	1.82	-1.41
10,433.00	87.48	266.640	6,346.66	-11.63	-4,584.91	4,584.81	1.17	-0.41	-1.10
10,525.00	89.66	265.600	6,348.95	-17.85	-4,676.67	4,676.53	2.63	2.37	-1.13
10,616.00	89.83	267.160	6,349.36	-23.60	-4,767.48	4,767.32	1.72	0.19	1.71
10,707.00	89.70	266.930	6,349.73	-28.29	-4,858.36	4,858.17	0.29	-0.14	-0.25
10,798.00	89.50	268.680	6,350.37	-31.77	-4,949.29	4,949.08	1.94	-0.22	1.92
10,890.00	89.36	270.050	6,351.28	-32.79	-5,041.27	5,041.06	1.50	-0.15	1.49
10,981.00	89.46	270.820	6,352.22	-32.10	-5,132.27	5,132.06	0.85	0.11	0.85
11,071.00	89.13	269.890	6,353.33	-31.54	-5,222.26	5,222.05	1.10	-0.37	-1.03
11,162.00	88.46	268.170	6,355.24	-33.08	-5,313.22	5,313.00	2.03	-0.74	-1.89
11,253.00	89.06	270.400	6,357.21	-34.22	-5,404.19	5,403.96	2.54	0.66	2.45
11,344.00	88.72	269.080	6,358.97	-34.63	-5,495.16	5,494.94	1.50	-0.37	-1.45
11,435.00	87.35	268.010	6,362.09	-36.94	-5,586.08	5,585.84	1.91	-1.51	-1.18
11,526.00	87.62	267.120	6,366.09	-40.80	-5,676.91	5,676.65	1.02	0.30	-0.98
11,617.00	87.31	268.090	6,370.11	-44.60	-5,767.74	5,767.46	1.12	-0.34	1.07
11,709.00	89.87	269.550	6,372.38	-46.49	-5,859.68	5,859.40	3.20	2.78	1.59
11,801.00	91.17	270.620	6,371.54	-46.36	-5,951.67	5,951.39	1.83	1.41	1.16
11,892.00	90.81	270.440	6,369.97	-45.52	-6,042.66	6,042.37	0.44	-0.40	-0.20
11,983.00	89.43	268.710	6,369.78	-46.19	-6,133.65	6,133.36	2.43	-1.52	-1.90
12,075.00	90.37	270.290	6,369.94	-46.99	-6,225.64	6,225.35	2.00	1.02	1.72
12,165.00	90.94	270.000	6,368.91	-46.77	-6,315.63	6,315.34	0.71	0.63	-0.32
12,257.00	90.17	270.770	6,368.02	-46.15	-6,407.63	6,407.34	1.18	-0.84	0.84
12,348.00	89.46	270.800	6,368.31	-44.90	-6,498.62	6,498.33	0.78	-0.78	0.03
12,439.00	89.83	271.690	6,368.88	-42.92	-6,589.59	6,589.31	1.06	0.41	0.98
12,531.00	89.56	271.050	6,369.37	-40.73	-6,681.56	6,681.30	0.76	-0.29	-0.70
12,622.00	90.10	272.020	6,369.64	-38.29	-6,772.53	6,772.27	1.22	0.59	1.07
12,712.00	89.73	273.080	6,369.77	-34.28	-6,862.44	6,862.20	1.25	-0.41	1.18
12,804.00	89.46	271.760	6,370.42	-30.40	-6,954.35	6,954.13	1.46	-0.29	-1.43
12,895.00	90.50	271.350	6,370.45	-27.93	-7,045.32	7,045.11	1.23	1.14	-0.45

<b>Company:</b>	Bill Barrett Corp.	<b>Local Co-ordinate Reference:</b>	Well Anschutz Equus Farms 4-62-29-4033C
<b>Project:</b>	Weld County, CO NAD 83	<b>TVD Reference:</b>	GL 4624.3' & KB 20' @ 4644.30ft (Savanna 802)
<b>Site:</b>	Anschutz Equus Farms 4-62-28_27 NWSW Pad [GOOD]	<b>MD Reference:</b>	GL 4624.3' & KB 20' @ 4644.30ft (Savanna 802)
<b>Well:</b>	Anschutz Equus Farms 4-62-29-4033C	<b>North Reference:</b>	True
<b>Wellbore:</b>	OH	<b>Survey Calculation Method:</b>	Minimum Curvature
<b>Design:</b>	OH	<b>Database:</b>	Casper District

Survey									
Measured Depth (ft)	Inclination (°)	Azimuth (°)	Vertical Depth (ft)	+N/-S (ft)	+E/-W (ft)	Vertical Section (ft)	Dogleg Rate (°/100ft)	Build Rate (°/100ft)	Turn Rate (°/100ft)
12,986.00	89.36	271.190	6,370.56	-25.91	-7,136.29	7,136.09	1.27	-1.25	-0.18
13,077.00	89.09	271.590	6,371.79	-23.71	-7,227.26	7,227.06	0.53	-0.30	0.44
13,169.00	88.19	271.240	6,373.98	-21.43	-7,319.20	7,319.02	1.05	-0.98	-0.38
13,260.00	87.21	270.360	6,377.63	-20.16	-7,410.12	7,409.94	1.45	-1.08	-0.97
13,351.00	87.85	270.240	6,381.55	-19.69	-7,501.03	7,500.86	0.72	0.70	-0.13
13,442.00	88.96	269.640	6,384.08	-19.78	-7,591.99	7,591.82	1.39	1.22	-0.66
13,533.00	90.44	270.620	6,384.56	-19.58	-7,682.99	7,682.81	1.95	1.63	1.08
13,624.00	90.13	270.060	6,384.11	-19.04	-7,773.99	7,773.81	0.70	-0.34	-0.62
13,715.00	90.37	269.770	6,383.71	-19.17	-7,864.99	7,864.81	0.41	0.26	-0.32
13,806.00	91.74	269.300	6,382.04	-19.91	-7,955.96	7,955.78	1.59	1.51	-0.52
13,897.00	91.58	268.130	6,379.40	-21.95	-8,046.90	8,046.71	1.30	-0.18	-1.29
13,989.00	91.68	269.370	6,376.78	-23.96	-8,138.84	8,138.64	1.35	0.11	1.35
14,081.00	91.98	269.160	6,373.84	-25.14	-8,230.79	8,230.58	0.40	0.33	-0.23
14,172.00	92.65	269.090	6,370.17	-26.52	-8,321.70	8,321.48	0.74	0.74	-0.08
14,264.00	92.05	270.400	6,366.40	-26.93	-8,413.62	8,413.40	1.57	-0.65	1.42
14,355.00	92.95	270.760	6,362.43	-26.01	-8,504.53	8,504.31	1.07	0.99	0.40
14,447.00	90.60	272.390	6,359.58	-23.49	-8,596.44	8,596.23	3.11	-2.55	1.77
14,538.00	91.01	272.700	6,358.30	-19.44	-8,687.34	8,687.15	0.56	0.45	0.34
14,630.00	89.30	270.720	6,358.05	-16.70	-8,779.29	8,779.11	2.84	-1.86	-2.15
14,721.00	88.56	270.470	6,359.75	-15.76	-8,870.27	8,870.10	0.86	-0.81	-0.27
14,812.00	88.19	270.790	6,362.33	-14.75	-8,961.23	8,961.06	0.54	-0.41	0.35
14,904.00	89.23	272.770	6,364.40	-11.90	-9,053.15	9,053.00	2.43	1.13	2.15
14,995.00	88.72	271.670	6,366.03	-8.37	-9,144.07	9,143.93	1.33	-0.56	-1.21
15,086.00	87.62	269.000	6,368.94	-7.84	-9,235.01	9,234.87	3.17	-1.21	-2.93
15,178.00	88.09	270.020	6,372.38	-8.63	-9,326.94	9,326.80	1.22	0.51	1.11
15,269.00	88.02	269.580	6,375.47	-8.94	-9,417.89	9,417.74	0.49	-0.08	-0.48
15,360.00	89.77	271.190	6,377.22	-8.33	-9,508.86	9,508.72	2.61	1.92	1.77
15,451.00	89.13	269.810	6,378.10	-7.54	-9,599.85	9,599.71	1.67	-0.70	-1.52
15,543.00	89.33	269.260	6,379.33	-8.29	-9,691.84	9,691.69	0.64	0.22	-0.60
15,635.00	88.49	269.220	6,381.08	-9.51	-9,783.82	9,783.66	0.91	-0.91	-0.04
15,726.00	89.53	270.560	6,382.65	-9.68	-9,874.80	9,874.64	1.86	1.14	1.47
15,820.00	88.73	270.080	6,384.08	-9.15	-9,968.79	9,968.63	0.99	-0.85	-0.51
15,914.00	89.30	270.940	6,385.70	-8.32	-10,062.77	10,062.61	1.10	0.61	0.91
16,008.00	89.40	270.360	6,386.76	-7.25	-10,156.75	10,156.61	0.63	0.11	-0.62
16,103.00	89.77	271.670	6,387.45	-5.57	-10,251.73	10,251.59	1.43	0.39	1.38
16,198.00	91.38	272.070	6,386.50	-2.47	-10,346.68	10,346.55	1.75	1.69	0.42
16,257.00	91.64	271.630	6,384.94	-0.57	-10,405.62	10,405.51	0.87	0.44	-0.75
Last SDI MWD Survey									
16,314.00	91.64	271.630	6,383.31	1.06	-10,462.58	10,462.47	0.00	0.00	0.00
Projection to TD									

<b>Company:</b>	Bill Barrett Corp.	<b>Local Co-ordinate Reference:</b>	Well Anschutz Equus Farms 4-62-29-4033C
<b>Project:</b>	Weld County, CO NAD 83	<b>TVD Reference:</b>	GL 4624.3' & KB 20' @ 4644.30ft (Savanna 802)
<b>Site:</b>	Anschutz Equus Farms 4-62-28_27 NWSW Pad [GOOD]	<b>MD Reference:</b>	GL 4624.3' & KB 20' @ 4644.30ft (Savanna 802)
<b>Well:</b>	Anschutz Equus Farms 4-62-29-4033C	<b>North Reference:</b>	True
<b>Wellbore:</b>	OH	<b>Survey Calculation Method:</b>	Minimum Curvature
<b>Design:</b>	OH	<b>Database:</b>	Casper District

Design Annotations				
Measured Depth (ft)	Vertical Depth (ft)	Local Coordinates		Comment
		+N/-S (ft)	+E/-W (ft)	
800.00	800.00	0.00	0.00	Casing Assumed Vertical
1,245.00	1,244.76	-2.06	-12.60	First SDI MWD Survey
5,724.00	5,706.14	-65.46	-189.16	First SDI MWD Curve Survey
5,744.00	5,726.05	-66.04	-190.88	Curve KOP
6,569.00	6,288.29	-69.61	-727.17	Last SDI MWD Curve Survey
6,604.00	6,292.03	-68.56	-761.95	Casing Point
6,674.00	6,293.87	-66.88	-831.88	First SDI MWD Lateral Survey
16,257.00	6,384.94	-0.57	-10,405.62	Last SDI MWD Survey
16,314.00	6,383.31	1.06	-10,462.58	Projection to TD

Checked By: _____	Approved By: _____	Date: _____
-------------------	--------------------	-------------