

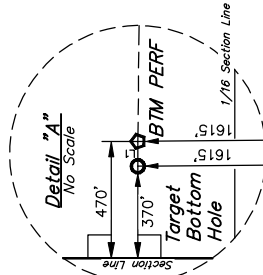
T3N, R68W, 6th P.M.

GREAT WESTERN OPERATING COMPANY

POSTLE IC 09-299HN
SW 1/4 NW 1/4, SECTION 11, T3N, R68W, 6th P.M.
WELD COUNTY, COLORADO

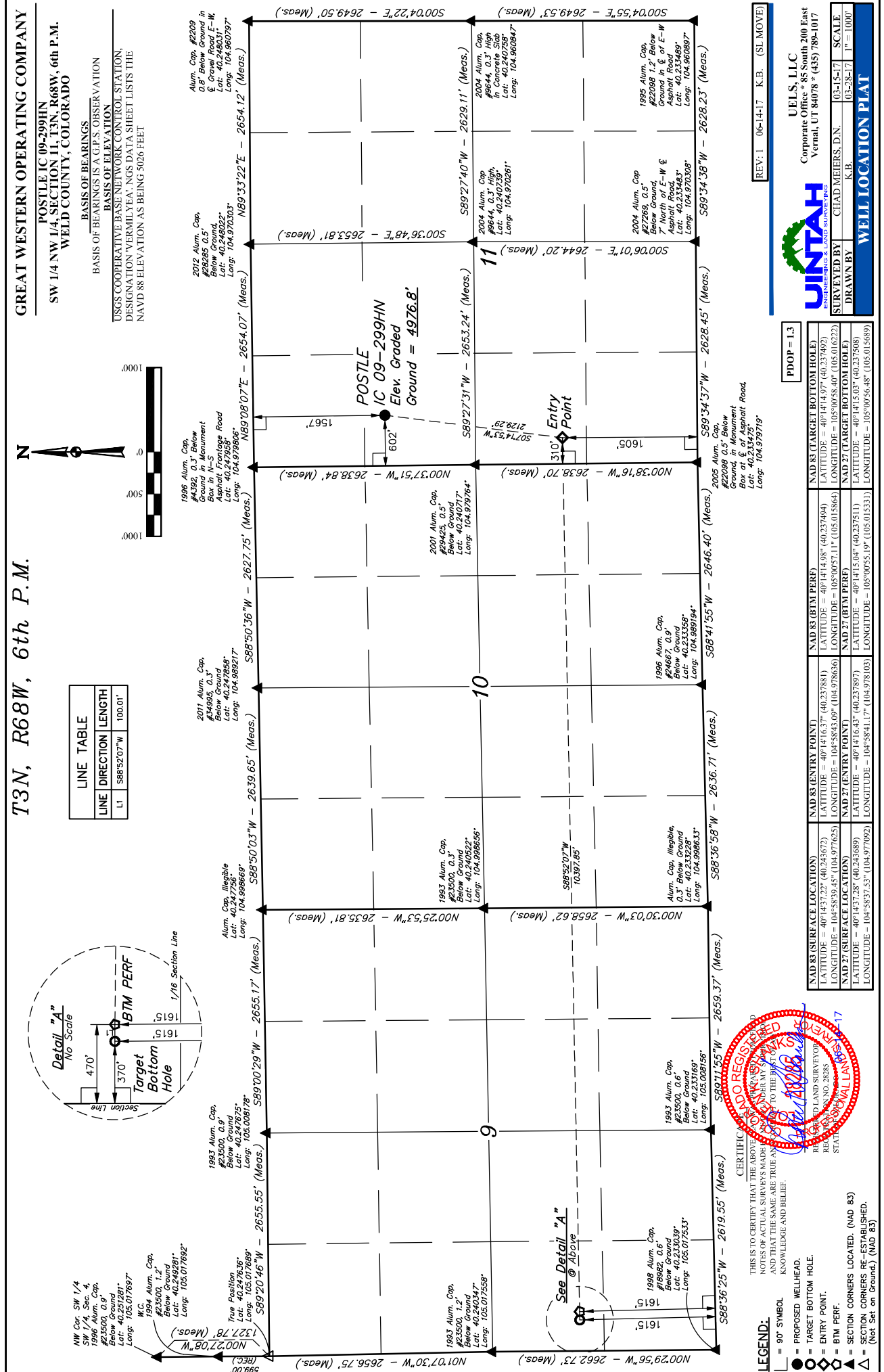
LINE TABLE		
LINE	DIRECTION	LENGTH
L1	S88°52'07"W	100.01'

N



USGS COOPERATIVE BASIC NETWORK CONTROL STATION,
DESIGNATION VERMILITEA, NGDS DATA SHEET LISTS THE
NAVD 88 ELEVATION AS BEING 5026 FEET

BASIS OF BEARINGS IS A GPS OBSERVATION
BASIS OF ELEVATION



LEGEND:

- 90° SYMBOL
- PROPOSED WELL-HEAD.
- TARGET BOTTOM HOLE.
- BTM POINT.
- SECTION CORNERS LOCATED. (NAD 83)
- SECTION CORNERS RE-ESTABLISHED. (Not Set on Ground). (NAD 83)

CERTIFICATE OF RECORD REGISTRATION

THIS IS TO CERTIFY THAT THE ABOVE NOTED SURVEYS MADE BY THE UNDERSIGNED ARE TRUE AND CORRECT TO THE BEST OF MY KNOWLEDGE AND BELIEF.

REGISTERED LAND SURVEYOR
RECORD NO. 2835
STATE OF COLORADO
JUL 17 2024

WELL LOCATION PLAT

UJINTAH
ENGINEERING & LAND SURVEYING

UJELS, LLC
Corporate Office * 85 South 200 East
Vernal, UT 84078 * (435) 789-1017

SURVEYED BY: CHAD MEIERS, D.N.
DRAWN BY: K.B.

SCALE:
03-15-17
03-28-17
1" = 1000'

REVISIONS:

REV.	DATE	BY	DESCRIPTION
1	06-14-17	K.B.	(SL MOVE)