

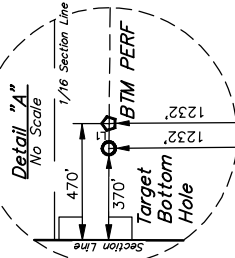
T3N, R68W, 6th P.M.

GREAT WESTERN OPERATING COMPANY

POSTLE IC 09-302HC
SW 1/4 NW 1/4, SECTION 11, T3N, R68W, 6th P.M.
WELD COUNTY, COLORADO

BASIS OF BEARINGS
BASIS OF ELEVATION
USGS COOPERATIVE BASE NETWORK CONTROL STATION,
DESIGNATION VERMILYEA, NGDS DATA SHEET LISTS THE
NAVD 88 ELEVATION AS BEING 5026 FEET

LINE TABLE	
LINE	DIRECTION LENGTH
L1	S88°51'07"W 100.01'



NW Cor. SW 1/4
1996 Alum. Cap.
#23500, 0.9'
Below Ground
Lat: 40.231281°
Long: 105.017697°

1994 Alum. Cap.
#23500, 1.2'
Below Ground
Lat: 40.249291°
Long: 105.017692°

1993 Alum. Cap.
#23500, 0.9'
Below Ground
Lat: 40.247756°
Long: 105.017697°

Alum. Cap. Illegible
#23500, 0.3'
Below Ground
Lat: 40.247756°
Long: 104.998669°

2011 Alum. Cap.
#34995, 0.3'
Below Ground
Lat: 40.247756°
Long: 104.998217°

1998 Alum. Cap.
#2209, 0.8'
Below Ground in
Gravel Road E-W
Lat: 40.248031°
Long: 104.960797°

2012 Alum. Cap.
#2209, 0.3'
Below Ground
Lat: 40.248031°
Long: 104.970303°

1993 Alum. Cap.
#23500, 1.2'
Below Ground
Lat: 40.247756°
Long: 105.017558°

1993 Alum. Cap.
#23500, 0.9'
Below Ground
Lat: 40.247756°
Long: 105.017697°

1993 Alum. Cap.
#23500, 0.3'
Below Ground
Lat: 40.240522°
Long: 104.998669°

1996 Alum. Cap.
#24667, 0.9'
Below Ground
Lat: 40.233358°
Long: 104.998194°

2001 Alum. Cap.
#24667, 0.5'
Below Ground
Lat: 40.240717°
Long: 104.979764°

2004 Alum. Cap.
#2209, 0.3'
Below Ground
Lat: 40.240739°
Long: 104.970261°

1993 Alum. Cap.
#23500, 1.2'
Below Ground
Lat: 40.247756°
Long: 105.017558°

1993 Alum. Cap.
#23500, 0.9'
Below Ground
Lat: 40.247756°
Long: 105.017697°

1993 Alum. Cap.
#23500, 0.3'
Below Ground
Lat: 40.240522°
Long: 104.998669°

1996 Alum. Cap.
#24667, 0.9'
Below Ground
Lat: 40.233358°
Long: 104.998194°

2001 Alum. Cap.
#24667, 0.5'
Below Ground
Lat: 40.240717°
Long: 104.979764°

2004 Alum. Cap.
#2209, 0.3'
Below Ground
Lat: 40.240739°
Long: 104.970261°

1993 Alum. Cap.
#23500, 1.2'
Below Ground
Lat: 40.247756°
Long: 105.017558°

1993 Alum. Cap.
#23500, 0.9'
Below Ground
Lat: 40.247756°
Long: 105.017697°

1993 Alum. Cap.
#23500, 0.3'
Below Ground
Lat: 40.240522°
Long: 104.998669°

1996 Alum. Cap.
#24667, 0.9'
Below Ground
Lat: 40.233358°
Long: 104.998194°

2001 Alum. Cap.
#24667, 0.5'
Below Ground
Lat: 40.240717°
Long: 104.979764°

2004 Alum. Cap.
#2209, 0.3'
Below Ground
Lat: 40.240739°
Long: 104.970261°

1993 Alum. Cap.
#23500, 1.2'
Below Ground
Lat: 40.247756°
Long: 105.017558°

1993 Alum. Cap.
#23500, 0.9'
Below Ground
Lat: 40.247756°
Long: 105.017697°

1993 Alum. Cap.
#23500, 0.3'
Below Ground
Lat: 40.240522°
Long: 104.998669°

1996 Alum. Cap.
#24667, 0.9'
Below Ground
Lat: 40.233358°
Long: 104.998194°

2001 Alum. Cap.
#24667, 0.5'
Below Ground
Lat: 40.240717°
Long: 104.979764°

2004 Alum. Cap.
#2209, 0.3'
Below Ground
Lat: 40.240739°
Long: 104.970261°

1993 Alum. Cap.
#23500, 1.2'
Below Ground
Lat: 40.247756°
Long: 105.017558°

1993 Alum. Cap.
#23500, 0.9'
Below Ground
Lat: 40.247756°
Long: 105.017697°

1993 Alum. Cap.
#23500, 0.3'
Below Ground
Lat: 40.240522°
Long: 104.998669°

1996 Alum. Cap.
#24667, 0.9'
Below Ground
Lat: 40.233358°
Long: 104.998194°

2001 Alum. Cap.
#24667, 0.5'
Below Ground
Lat: 40.240717°
Long: 104.979764°

2004 Alum. Cap.
#2209, 0.3'
Below Ground
Lat: 40.240739°
Long: 104.970261°

1993 Alum. Cap.
#23500, 1.2'
Below Ground
Lat: 40.247756°
Long: 105.017558°

1993 Alum. Cap.
#23500, 0.9'
Below Ground
Lat: 40.247756°
Long: 105.017697°

1993 Alum. Cap.
#23500, 0.3'
Below Ground
Lat: 40.240522°
Long: 104.998669°

1996 Alum. Cap.
#24667, 0.9'
Below Ground
Lat: 40.233358°
Long: 104.998194°

2001 Alum. Cap.
#24667, 0.5'
Below Ground
Lat: 40.240717°
Long: 104.979764°

2004 Alum. Cap.
#2209, 0.3'
Below Ground
Lat: 40.240739°
Long: 104.970261°

1993 Alum. Cap.
#23500, 1.2'
Below Ground
Lat: 40.247756°
Long: 105.017558°

1993 Alum. Cap.
#23500, 0.9'
Below Ground
Lat: 40.247756°
Long: 105.017697°

1993 Alum. Cap.
#23500, 0.3'
Below Ground
Lat: 40.240522°
Long: 104.998669°

1996 Alum. Cap.
#24667, 0.9'
Below Ground
Lat: 40.233358°
Long: 104.998194°

2001 Alum. Cap.
#24667, 0.5'
Below Ground
Lat: 40.240717°
Long: 104.979764°

2004 Alum. Cap.
#2209, 0.3'
Below Ground
Lat: 40.240739°
Long: 104.970261°

1993 Alum. Cap.
#23500, 1.2'
Below Ground
Lat: 40.247756°
Long: 105.017558°

1993 Alum. Cap.
#23500, 0.9'
Below Ground
Lat: 40.247756°
Long: 105.017697°

1993 Alum. Cap.
#23500, 0.3'
Below Ground
Lat: 40.240522°
Long: 104.998669°

1996 Alum. Cap.
#24667, 0.9'
Below Ground
Lat: 40.233358°
Long: 104.998194°

2001 Alum. Cap.
#24667, 0.5'
Below Ground
Lat: 40.240717°
Long: 104.979764°

2004 Alum. Cap.
#2209, 0.3'
Below Ground
Lat: 40.240739°
Long: 104.970261°

1993 Alum. Cap.
#23500, 1.2'
Below Ground
Lat: 40.247756°
Long: 105.017558°

1993 Alum. Cap.
#23500, 0.9'
Below Ground
Lat: 40.247756°
Long: 105.017697°

1993 Alum. Cap.
#23500, 0.3'
Below Ground
Lat: 40.240522°
Long: 104.998669°

1996 Alum. Cap.
#24667, 0.9'
Below Ground
Lat: 40.233358°
Long: 104.998194°

2001 Alum. Cap.
#24667, 0.5'
Below Ground
Lat: 40.240717°
Long: 104.979764°

2004 Alum. Cap.
#2209, 0.3'
Below Ground
Lat: 40.240739°
Long: 104.970261°

1993 Alum. Cap.
#23500, 1.2'
Below Ground
Lat: 40.247756°
Long: 105.017558°

1993 Alum. Cap.
#23500, 0.9'
Below Ground
Lat: 40.247756°
Long: 105.017697°

1993 Alum. Cap.
#23500, 0.3'
Below Ground
Lat: 40.240522°
Long: 104.998669°

1996 Alum. Cap.
#24667, 0.9'
Below Ground
Lat: 40.233358°
Long: 104.998194°

2001 Alum. Cap.
#24667, 0.5'
Below Ground
Lat: 40.240717°
Long: 104.979764°

2004 Alum. Cap.
#2209, 0.3'
Below Ground
Lat: 40.240739°
Long: 104.970261°

1993 Alum. Cap.
#23500, 1.2'
Below Ground
Lat: 40.247756°
Long: 105.017558°

1993 Alum. Cap.
#23500, 0.9'
Below Ground
Lat: 40.247756°
Long: 105.017697°

1993 Alum. Cap.
#23500, 0.3'
Below Ground
Lat: 40.240522°
Long: 104.998669°

1996 Alum. Cap.
#24667, 0.9'
Below Ground
Lat: 40.233358°
Long: 104.998194°

2001 Alum. Cap.
#24667, 0.5'
Below Ground
Lat: 40.240717°
Long: 104.979764°

2004 Alum. Cap.
#2209, 0.3'
Below Ground
Lat: 40.240739°
Long: 104.970261°

1993 Alum. Cap.
#23500, 1.2'
Below Ground
Lat: 40.247756°
Long: 105.017558°

1993 Alum. Cap.
#23500, 0.9'
Below Ground
Lat: 40.247756°
Long: 105.017697°

1993 Alum. Cap.
#23500, 0.3'
Below Ground
Lat: 40.240522°
Long: 104.998669°

1996 Alum. Cap.
#24667, 0.9'
Below Ground
Lat: 40.233358°
Long: 104.998194°

2001 Alum. Cap.
#24667, 0.5'
Below Ground
Lat: 40.240717°
Long: 104.979764°

2004 Alum. Cap.
#2209, 0.3'
Below Ground
Lat: 40.240739°
Long: 104.970261°

1993 Alum. Cap.
#23500, 1.2'
Below Ground
Lat: 40.247756°
Long: 105.017558°

1993 Alum. Cap.
#23500, 0.9'
Below Ground
Lat: 40.247756°
Long: 105.017697°

1993 Alum. Cap.
#23500, 0.3'
Below Ground
Lat: 40.240522°
Long: 104.998669°

1996 Alum. Cap.
#24667, 0.9'
Below Ground
Lat: 40.233358°
Long: 104.998194°

2001 Alum. Cap.
#24667, 0.5'
Below Ground
Lat: 40.240717°
Long: 104.979764°

2004 Alum. Cap.
#2209, 0.3'
Below Ground
Lat: 40.240739°
Long: 104.970261°

LEGEND:
= 90° SYMBOL
= PROPOSED WELL-HEAD.
= TARGET BOTTOM HOLE.
= BTM PERF.
= SECTION CORNERS LOCATED. (NAD 83)
= SECTION CORNERS RE-ESTABLISHED.
(Not Set on Ground). (NAD 83)

CERTIFICATE OF RECORDING
THIS IS TO CERTIFY THAT THE ABOVE
NOTES OF ACTUAL SURVEYS MADE
AND THAT THE SAME ARE TRUE AND
KNOWLEDGE AND BELIEF.
RECORDED LAND SURVEYOR
RECORD NO. 2835
STATE OF COLORADO
JUL 17 2017

POOP = 1.4

JUNTAH
ENGINEERING & LAND SURVEYING
SURVEYED BY CHAD MEYERS, D.N.
DRAWN BY K.B.
SCALE
03-15-17
03-28-17
1" = 1000'

UELS, LLC
Corporate Office * 85 South 200 East
Vernal, UT 84078 * (435) 789-1017
REV: 1 06-14-17 K.B. (SL MOVE)

NAD 83 (SURFACE LOCATION)	NAD 83 (ENTRY POINT)	NAD 83 (BTM PERF)	NAD 83 (TARGET BOTTOM HOLE)
Latitude = 40°14'57.21" (40.243669) Longitude = 104°58'39.84" (104.977731)	Latitude = 40°14'57.21" (40.243669) Longitude = 104°58'39.84" (104.977731)	Latitude = 40°14'11.20" (40.236444) Longitude = 105°00'57.10" (105.015861)	Latitude = 40°14'11.19" (40.236442) Longitude = 105°00'58.39" (105.016219)
Latitude = 40°14'57.27" (40.243686) Longitude = 104°58'37.92" (104.977290)	Latitude = 40°14'57.27" (40.243686) Longitude = 104°58'34.15" (104.978997)	Latitude = 40°14'11.26" (40.236461) Longitude = 105°00'55.17" (105.015325)	Latitude = 40°14'11.24" (40.236456) Longitude = 105°00'56.46" (105.015833)